



COMMONWEALTH of VIRGINIA

Department of Health
DIVISION OF SHELLFISH SANITATION
109 Governor Street, Room 614-B
Richmond, VA 23219

REGISTRAR OF REGULATIONS
10 DEC -6 PM 12:28

Ph: 804-864-7487
Fax: 804-864-7481

NOTICE AND DESCRIPTION OF SHELLFISH AREA CONDEMNATION NUMBER 084-043, OCCOHANNOCK CREEK

EFFECTIVE 16 DECEMBER 2010

Pursuant to Title 28.2, Chapter 8, §§28.2-803 through 28.2-808, §32.1-20, and §2.2-4002, B.16 of the *Code of Virginia*.

1. The "Notice and Description of Shellfish Area Condemnation Number 084-043, Occohannock Creek," effective 5 August 2008, is cancelled effective 16 December 2010.
2. Condemned Shellfish Area Number 084-043, shown as Sections A, B and C, is established effective 16 December 2010. It shall be unlawful for any person, firm, or corporation to take shellfish from these areas for any purpose, except by permit granted by the Marine Resources Commission, as provided in Section 28.2-810 of the *Code of Virginia*. The boundaries of these areas are shown on the map titled "Occohannock Creek, Condemned Shellfish Area Number 084-043, 16 December 2010" which is part of this notice.
3. Seasonally Condemned Shellfish Area Number 084-043 shown as Section M1 is established effective 1 April 2011, and shall remain in force annually thereafter for the period beginning the first day of April through the last day of October until rescinded. It shall be unlawful for any person, firm, or corporation to take shellfish from this area during such period for any purpose, except by permit granted by Marine Resources Commission, as provided in §28.2-810 of the *Code of Virginia*. The boundaries of this area are shown on the map titled "Occohannock Creek, Condemned Shellfish Area Number 084-043, 16 December 2010" which is part of this notice.
4. The Department of Health will receive, consider and respond to petitions by any interested person at any time with respect to reconsideration or revision of this order.

BOUNDARIES OF CONDEMNED AREA NUMBER 084-043

- A. The condemned area shall include that portion of Occohannock Creek and its tributaries upstream of a line drawn between latitude / longitude map coordinate (37°33'16.9", -75°51'02.7") and map coordinate (37°33'10.5", -75°51'09.5").
- B. The condemned area shall include all of Shields Cove upstream of a line drawn between latitude / longitude map coordinate (37°33'18.4", -75°52'06.0") and map coordinate (37°33'17.6", -75°52'02.6").

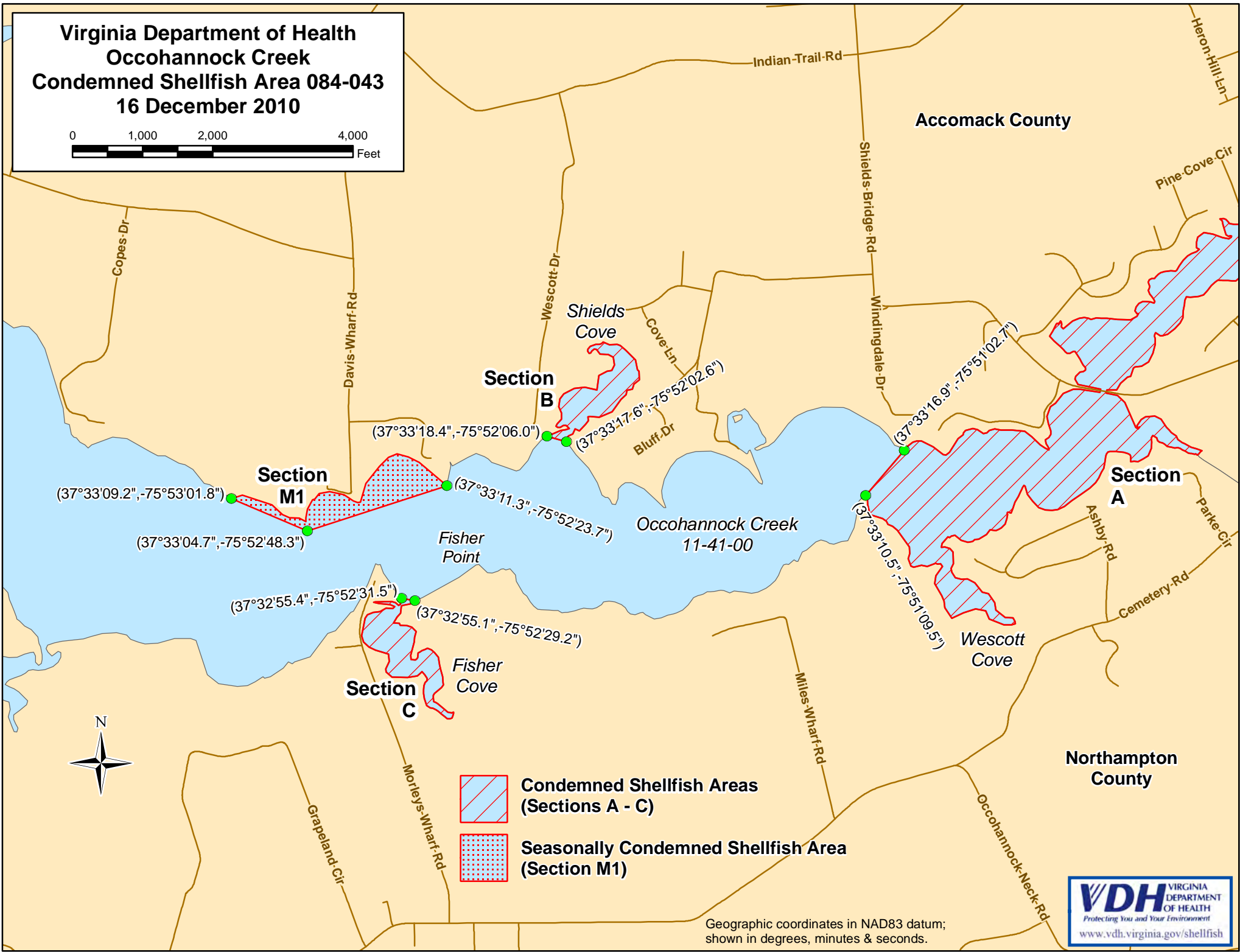
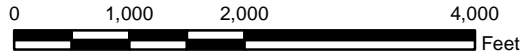
- C. The condemned area shall include all of Fisher Cove upstream of a line drawn between latitude / longitude map coordinate (37°32'55.4", -75°52'31.5") and map coordinate (37°32'55.1", -75°52'29.2").

- M1. The condemned area shall include that portion of the Occohannock Creek and its tributaries inland of a line drawn from latitude / longitude map coordinate (37°33'09.2", -75°53'01.8"), map coordinate (37°33'04.7", -75°52'48.3"), and map coordinate (37°33'11.3", -75°52'23.7").

Recommended by: 
Director, Division of Shellfish Sanitation

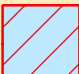
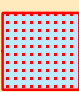
Ordered by:  12/2/10
State Health Commissioner Date

**Virginia Department of Health
 Occohannock Creek
 Condemned Shellfish Area 084-043
 16 December 2010**



Accomack County

Northampton County

-  **Condemned Shellfish Areas (Sections A - C)**
-  **Seasonally Condemned Shellfish Area (Section M1)**



Geographic coordinates in NAD83 datum; shown in degrees, minutes & seconds.

