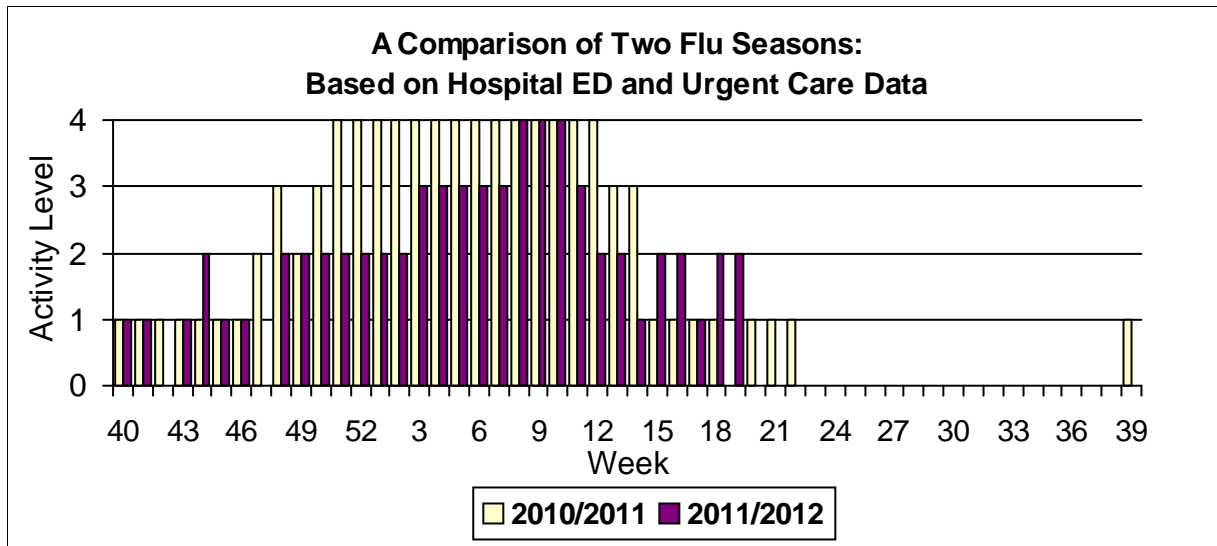


Physician's Weekly Influenza Like Illness (ILI) Report

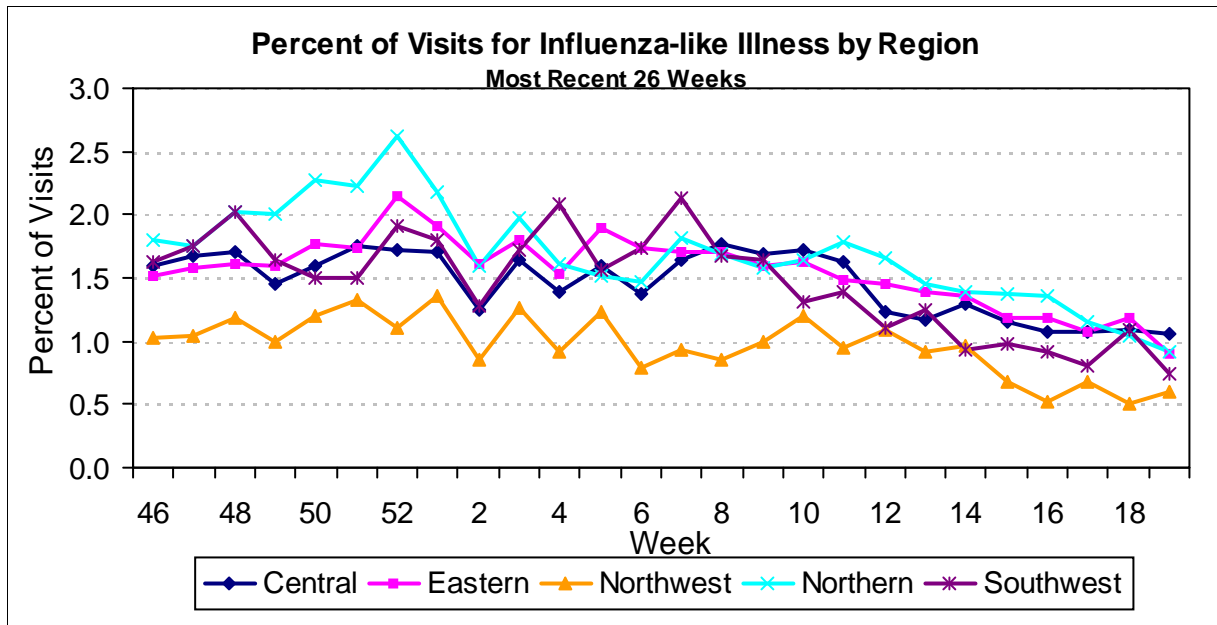
Virginia ILI Activity Level: Local

Data From Week Ending Date: 5/12/2012

Week Number: 19



Data are presented by week, with the first Sunday to Saturday week in January as week 1.
 Activity Levels: 0= No Activity, 1=Sporadic, 2= Local, 3= Regional, 4= Widespread.
 For a more detailed explanation of activity levels, see:
<http://www.vdh.state.va.us/Epidemiology/Surveillance/Influenza/>



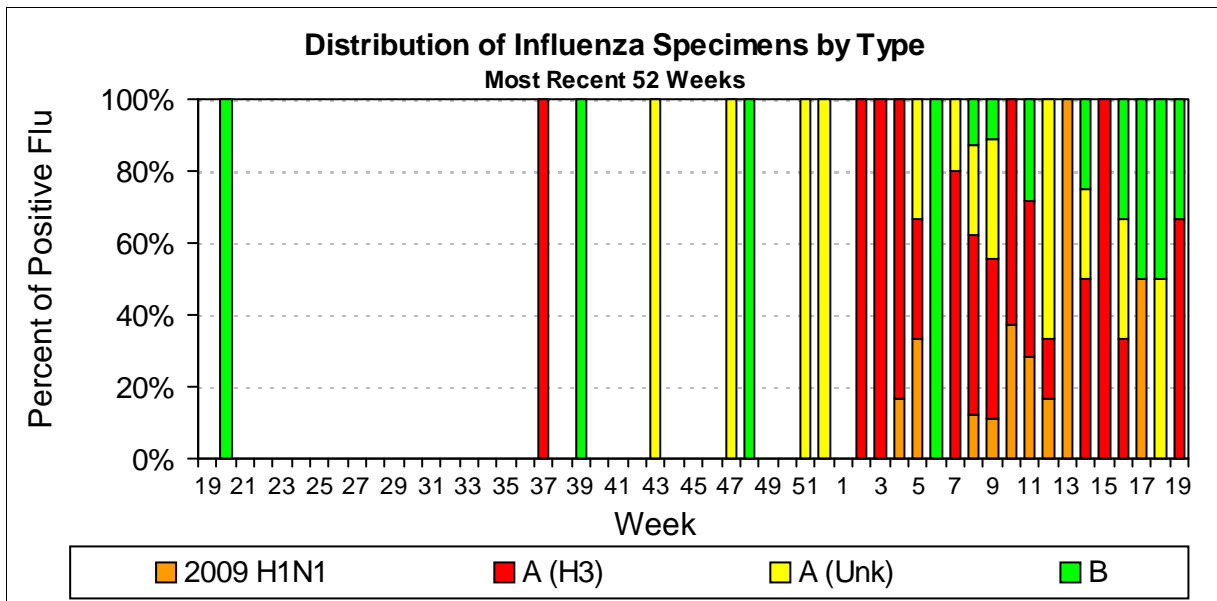
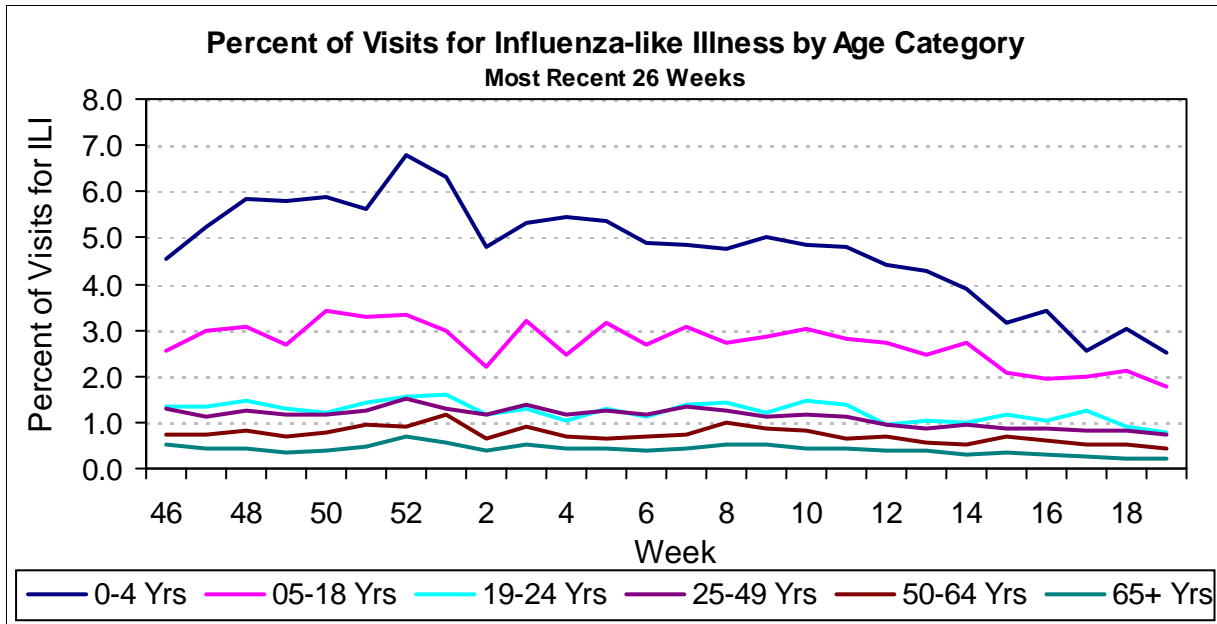
Graph shows patients with influenza-like illness as a proportion of all patients presenting at a sample of Virginia Hospital EDs and Urgent Care Facilities.

Physician's Weekly Influenza Like Illness (ILI) Report

Virginia ILI Activity Level: Local

Data From Week Ending Date: 5/12/2012

Week Number: 19



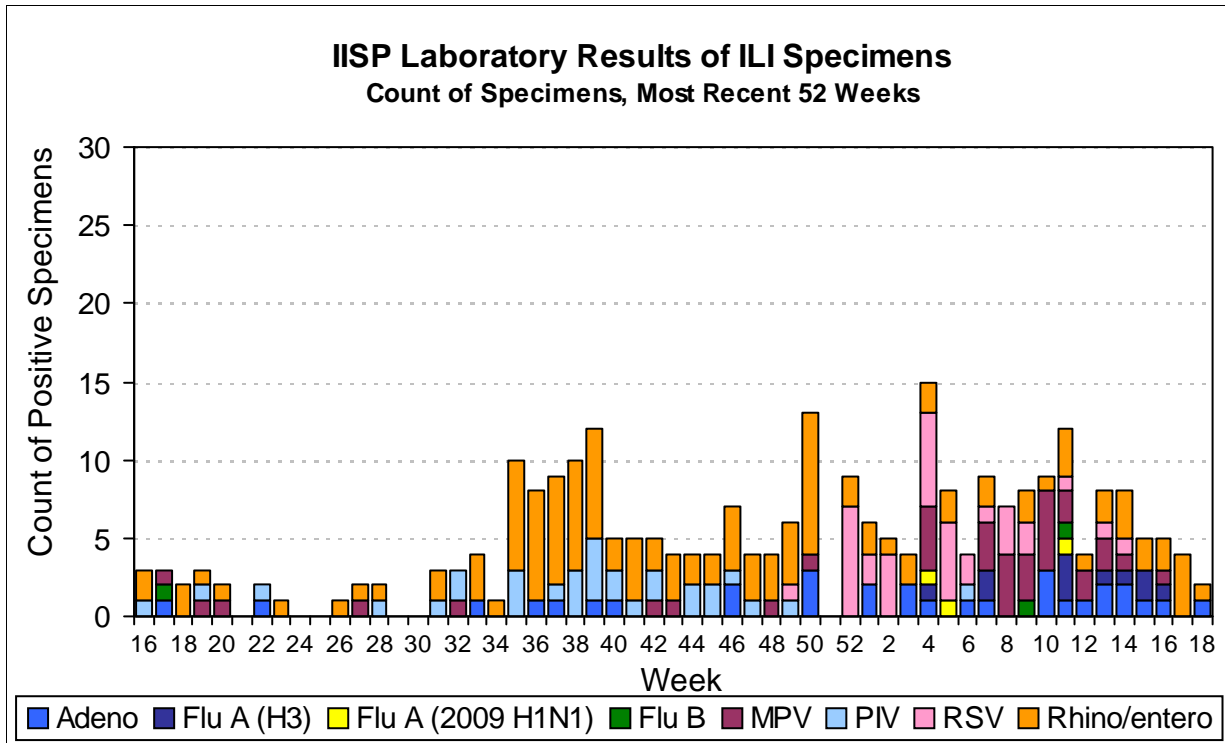
Percent is based on the total number of positive lab results for flu that are reported to the health department from all sources.

Physician's Weekly Influenza Like Illness (ILI) Report

Virginia ILI Activity Level: Local

Data From Week Ending Date: 5/12/2012

Week Number: 19



The Influenza Incidence Surveillance Project (IISP) is a project being conducted to determine the incidence of ILI and laboratory-confirmed influenza in health care seeking populations. Participating outpatient practices (e.g. family medicine, internal medicine, and pediatric practices) submit up to 10 nasopharyngeal specimens from ILI patients per week for PCR testing. For the 2010-11 flu season (Aug - July), IISP had four participating providers who were located in the central, eastern, and southwest regions. For 2011-12, six participating providers are located in the central, eastern, and northwestern regions.