

# 2019 County Health Rankings Release

## What is it?

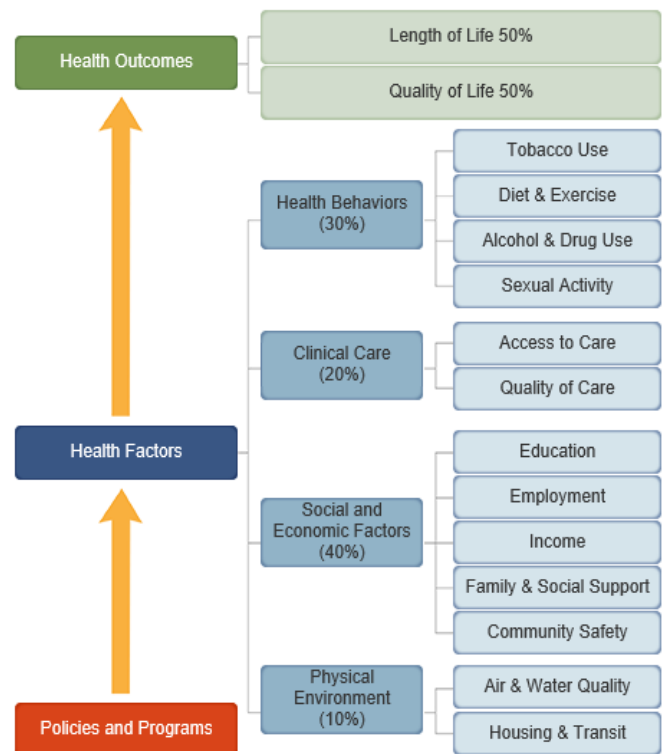
The County Health Rankings is a collaboration between the Robert Wood Johnson Foundation and the University of Wisconsin Population Health Institute. It measures the health of nearly all counties in the nation and ranks them within states. The overall ranks of counties seeks to address two questions:

1. **Health outcomes:** how healthy are residents in the county now?
2. **Health factors:** what are the opportunities for residents to be healthy in the future?

The county-level measures are compiled from a variety of national and state data sources, and are then standardized and combined using scientifically-informed weights.

## Why should I care?

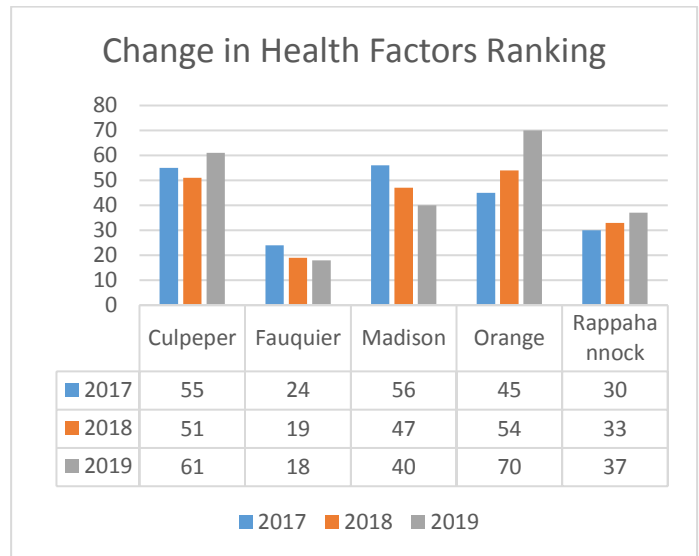
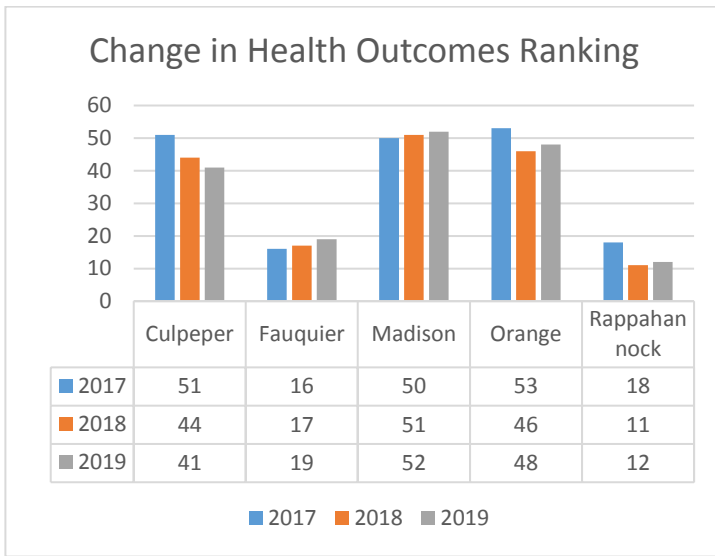
This information can help communities understand what influences the health of their residents and how long they will live. Comparisons among counties provide context and show that where you live, your race, and many other factors can deeply affect your ability to live a healthy life. The Rankings aim to spark conversations and action to address the health challenges and gaps highlighted in these findings. **You can help make your community a healthier place to live, learn, work and play.**



County Health Rankings model

## Key Points

- ❖ The County Health Rankings and Roadmaps released the tenth annual County Health Rankings on 03/19/2019
- ❖ This report highlights the importance of population based data collection and the enormous value and potential it holds
- ❖ Together we can take advantage of this release and all the data that it has to offer to help us target areas that we need to explore to improve the health of our residents
- ❖ Below is a summary of the trends in the health rankings of Culpeper, Fauquier, Madison, Orange and Rappahannock Counties
- ❖ The Rappahannock Rapidan Health District works to understand the factors that influence the health of our community and the role that everyone plays in making our residents the healthiest they can possibly be
- ❖ This year highlights an important element that shapes how well and how long we live: secure, affordable housing



#### What do these numbers mean?

- ❖ These numbers show the relative rankings of Culpeper, Fauquier, Madison, Orange, and Rappahannock Counties compared to all the counties in the state. There are 133 counties in Virginia, and counties are ranked from best health to poorest health. Lower numbers indicate a better ranking.
- ❖ It is important to remember that while overall rankings show that our area enjoys good health and opportunities, there are groups that suffer from social inequalities and poorer health. Looking at the data deeper can reveal these inequities, showing differences in health outcomes by zip code and race/ethnicity.
- ❖ While rankings can be very useful in determining how well your community is doing, it is important to remember that there are limitations. Rankings may change year to year due to actual changes (health gains/losses) in that county, but can also be influenced by changes in other counties. In addition, there can also be random variation in measure estimates.

<b>Comparison of County Health Rankings from 2018-2019 Rappahannock-Rapidan Health District</b>										
	Culpeper		Fauquier		Madison		Orange		Rappahannock	
<b>Measures</b>	2018	2019	2018	2019	2018	2019	2018	2019	2018	2019
<b>Health Outcomes</b>	<b>44</b>	<b>41</b>	<b>17</b>	<b>19</b>	<b>51</b>	<b>52</b>	<b>46</b>	<b>48</b>	<b>11</b>	<b>12</b>
Length of Life	56	48	26	34	52	46	61	67	12	10
Quality of Life	35	37	8	8	56	55	36	34	21	18
<b>Health Factors</b>	<b>51</b>	<b>61</b>	<b>19</b>	<b>18</b>	<b>47</b>	<b>40</b>	<b>54</b>	<b>70</b>	<b>33</b>	<b>37</b>
Health Behaviors	61	64	7	9	54	45	59	82	15	31
Clinical Care	71	99	72	68	53	56	45	62	110	105
Social & Economic Factors	41	49	12	10	46	34	51	50	39	33
Physical Environment	60	58	80	113	35	21	119	109	16	7

## Rappahannock Rapidan Health District: Trends Observed

Health Measure	Culpeper	Fauquier	Madison	Orange	Rappahannock
Premature Death	↑	↑	↑	↑	↑
Percentage of obese adults	↑	↑	↑	↑	↔
Percentage of adults reporting no physical activity	↓	↓	↓	↓	↑
Percent of driving deaths with alcohol involvement	↑	↑	↑	↑	↓
Rate of sexually transmitted infections (chlamydia)	↓	↔	↓	↓	↑
Percentage of uninsured adults	↔	↔	↔	↔	↓
Percentage receiving influenza vaccination (Medicare enrollees VA 48%)	48%	49%	56%	51%	46%
Mammogram screenings (Medicare enrollees 65-74, VA 43%)	37%	35%	46%	40%	30%
High school graduation rate	↑	↑	↑	↑	↑
Unemployment rate	↓	↓	↓	↓	↔
Percentage of children in poverty	↔	↔	↓	↓	↓
Violent crime	↑	↓	↑	↑	↓
Average density of fine particulate matter (air pollution)	↔	↓	↓	↔	↓
Severe Housing Problems (VA Percentage: 15%)	16%	12%	18%	15%	15%

Green = getting better; Red = getting worse; Yellow = essentially the same

### Data Snapshot

- ❖ The years of potential life lost before age 75 per 100,000 (age-adjusted) increased across the health district.
- ❖ The percentage of adults that report a body mass index of 30 or greater ranges from 26% (Fauquier) to 35% (Orange). All counties except Rappahannock reported an increase in percentage of obese adults.
- ❖ The percentage of driving deaths with alcohol involvement increased in Culpeper, Fauquier, Madison, and Orange.
- ❖ The high school graduation rate increased in all counties in the health district.
- ❖ The percentage of children under age 18 living in poverty decreased in Madison, Orange, and Rappahannock, and remained essentially the same in Culpeper and Fauquier.
- ❖ The percentage of households with at least 1 of 4 housing problems: overcrowding, high housing costs, lack of kitchen facilities, or lack of plumbing facilities is higher than the Virginia percentage in Culpeper and Madison.