



COMMONWEALTH of VIRGINIA
DEPARTMENT OF HEALTH
DIVISION OF SHELLFISH SANITATION

Marissa J. Levine, MD, MPH, FAAFP
State Health Commissioner

109 Governor Street, 6th Floor
P.O. Box 2448
Richmond, Virginia 23218

Ph: 804-864-7487
Fax: 804-864-7481

NOTICE AND DESCRIPTION OF SHELLFISH AREA CONDEMNATION
NUMBER 063-008, UPPER NANSEMOND RIVER

EFFECTIVE 26 SEPTEMBER 2016

Pursuant to Title 28.2, Chapter 8, §§28.2-803 through 28.2-808, §32.1-20, and §2.2-4002, B.16 of the Code of Virginia:

1. The “Notice and Description of Shellfish Area Condemnation Number 063-008, Upper Nansemond River,” effective 10 September 2015, is cancelled effective 26 September 2016.
2. Condemned Shellfish Area Number 063-008, shown as Sections A and B, is hereby established effective 10 September 2015. It shall be unlawful for any person, firm, or corporation to take shellfish from these areas, for any purpose, except by permit granted by the Marine Resources Commission, as provided in Section 28.2-810 of the Code of Virginia. The boundaries of these areas are shown on the map titled “Upper Nansemond River, Condemned Shellfish Area Number 063-008, 26 September 2016” which is part of this notice.
3. Conditionally Condemned Shellfish Area Number 063-008, shown as Section C1, is hereby established effective 26 September 2016. Pursuant to Section 28.2-808(3) of the Code of Virginia, such conditional condemnation is based upon predictable pollution events arising from excess rainfall. This area shall be placed in the closed status at 12:01 a.m. the day following a 24-hour rainfall event of greater than a total of 0.5 inch in the Nansemond River. The source of the data indicating the total 24-hour rainfall will be the National Oceanic and Atmospheric Administration’s Multisensor Precipitation Estimator for latitude / longitude coordinate (36.85116188,-76.52545336 decimal degrees), or (36°51'04.2",-76°31'31.6" degrees, minutes, and seconds). The time interval used to measure the 24-hour rainfall event will be the 24-hour period ending at 8:00 p.m. on the day prior to the effective date of the closed status. The closed status of the conditionally condemned area shall remain in effect for 10 calendar days, and shall revert to the open status at 12:01 a.m. on the 11th calendar day from the effective date of the closed status. It shall be unlawful for any person, firm, or corporation to take shellfish from this area for any purpose while in the closed status, except by permit granted by the Marine Resources Commission, as provided in Section 28.2-810 of the Code of Virginia. The boundaries of this area are shown on the map titled “Upper Nansemond River, Condemned Shellfish

Area Number 063-008, 26 September 2016" which is part of this notice.

4. The Department of Health will receive, consider and respond to petitions by any interested person at any time with respect to reconsideration or revision of this order.

BOUNDARIES OF CONDEMNED AREA NUMBER 063-008

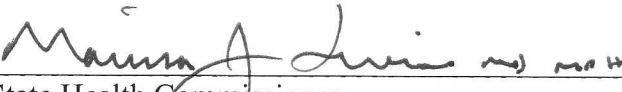
- A. The condemned area shall include that portion of the Nansemond River and its tributaries upstream of a line drawn between latitude/longitude map coordinate (36°50'37.8", -76°32'31.9") and map coordinate (36°50'02.9", -76°32'31.6").
- B. The condemned area shall include that portion of the Nansemond River and all of Wills Cove inland and upstream of a line drawn between latitude/longitude map coordinate (36°51'11.8", -76°31'12.5") and map coordinate (36°50'32.3", -76°31'26.6").
- C1. The conditionally condemned area shall include that portion of the Nansemond River and its tributaries upstream of a line drawn between latitude/longitude map coordinate (36°51'10.7", -76°31'54.3") and map coordinate (36°51'15.7", -76°31'16.2"); but excluding the areas defined as Sections A and B.

Recommended by:



Director, Division of Shellfish Sanitation

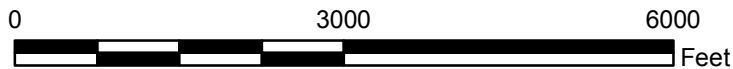
Ordered by:



State Health Commissioner


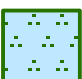
9/14/16
Date

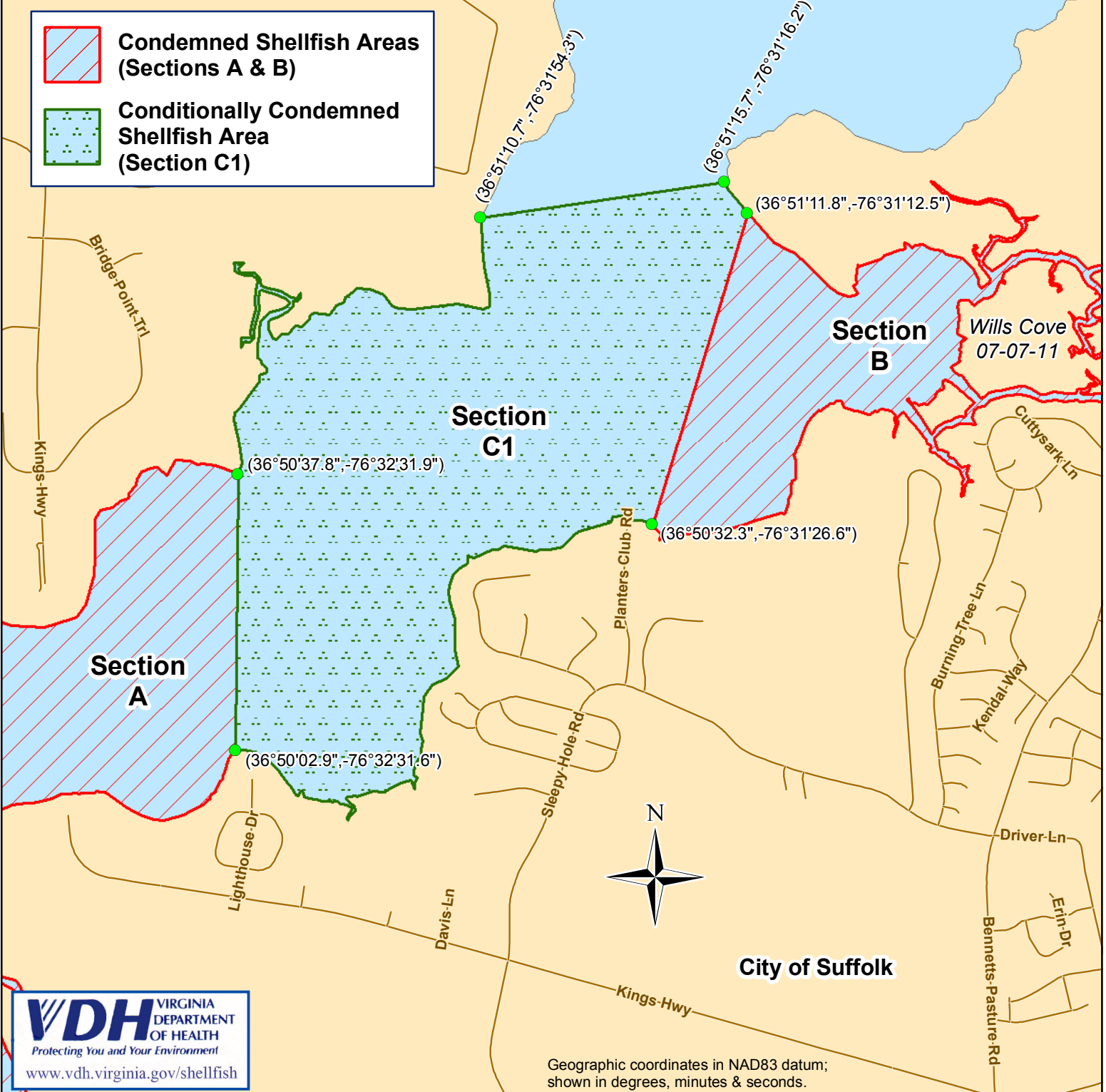
Virginia Department of Health
 Upper Nansemond River
 Condemned Shellfish Area Number 063-008
 26 September 2016



City of Suffolk

Nansemond River
 07-07-00

-  **Condemned Shellfish Areas (Sections A & B)**
-  **Conditionally Condemned Shellfish Area (Section C1)**



City of Suffolk