



# COMMONWEALTH of VIRGINIA

*Department of Health*  
*DIVISION OF SHELLFISH SANITATION*

109 Governor Street, Room 614-B  
Richmond, VA 23219

Ph: 804-864-7487  
Fax: 804-864-7481

**CHESAPEAKE BAY: BACK RIVER TO OLD POINT COMFORT**  
**Growing Area # 055**  
**City of Hampton**  
**Shoreline Sanitary Survey**

**Date:** 29 February 2012

**Survey period:** 24 February 2012

**Total number of properties surveyed:** 3

**Surveyed by:** J.D. Dickerson

## **SECTION A: GENERAL**

This survey area extends from Reference Point 55 at Northend Point to Reference Point 56 at the north end of McNair Drive, at the entrance to Fort Monroe, including the Chesapeake Bay shoreline and its tributaries between these two points.

The topography of the survey area ranges to less than 5' along the shoreline to a maximum of 10-15' on the Fort Monroe complex. The economy of the area is characterized by light industrial activity and commerce. Population density is moderate in the Buckroe Beach and Grandview areas.

The military presence in the area has drastically decreased since the closure of Fort Monroe on September 15, 2011. The complex is now managed by the Fort Monroe Federal Area Development Authority (FMFADA). This body is responsible for developing a redevelopment and reuse plan for the facility. The entire property, encompassing approximately 570 acres, is currently being transitioned to mixed civilian residential, business and recreational use. The original stone fort, dating back to 1834, is the centerpiece of the facility. On November 1, 2011 the fort was designated as a national monument and will continue to operate as a tourist attraction. Part of the reuse plan is to manage the risk associated with disposed ordinance and toxic chemicals present in the surrounding soils. At present there are 12 sites currently in some stage of remediation. Three sites are undergoing soil removal for presence of heavy metals such as mercury. Other sites can be effectively managed in the future by instituting land use and disturbance restrictions.

This survey area only partly encompasses the Fort Monroe complex. The remainder of the complex, including the original fort structure, the entire Mill Creek watershed and Old Point Comfort Marina are included in the adjacent Growing Area # 056 (Hampton Roads: Old Point Comfort to Newport News Point).

The entire area is served by the Hampton Roads Sanitation District sewer system with final treatment at the Boat Harbor Sewage Treatment Plant in Newport News (plant and discharge located in Growing Area # 057).

The Chesapeake Bay waters in this survey area are popular for seasonal recreational boating and support year round commercial crabbing and fishing activities.

Copies of bacteriological, hydrographical, and shellfish closure data are available at the Norfolk field office for review. Copies of the current condemnation notices and maps are available via the internet at <http://www.vdh.virginia.gov/shellfish/>.

This boundary of this area has been revised since the previous survey. This revision is reflected in the reduction of the number of properties surveyed and the overall number of significant properties.

This report lists only those properties which have a sanitary deficiency or have other environmental significance. ***"DIRECT"*** indicates that the significant activity or deficiency has a direct impact on shellfish waters. Individual field forms with full information on properties listed in this report are on file in the Central Office of the Division of Shellfish Sanitation in Richmond and are available for reference until superseded by a subsequent resurvey of the area. Data in the report is also made available to local health departments and other agencies to address items that may be out of compliance with their regulatory programs.

## **SECTION B: SEWAGE POLLUTION SOURCES**

### **SEWAGE TREATMENT FACILITIES**

-None-

### **ON-STE SEWAGE DEFICIENCIES**

-None-

### **POTENTIAL POLLUTION**

-None-

## **SECTION C: NONSEWAGE WASTE SITES**

### **INDUSTRIAL WASTES**

-None-

### **SOLID WASTE DUMPSITES**

-None-

## **SECTION D: BOATING ACTIVITY**

### **MARINAS**

1. Southall Landing Marina, 333 Mainsail Drive, Hampton 23664. Commercial Marina. 186 slips available. Present during last marina inspection were 37 boats under 26' and 97 boat over 26'. Services include water and electricity. Sanitary facilities include 2 commodes, 3 lavatories, 3 showers and 1 urinal for men; and for women there are 3 commodes, 3 lavatories and 3 showers. Sewage disposal is to HRSD. Boat holding tank pump out facilities, portable toilet dump station facilities and solid waste facilities are provided at this location.

3. Salt Ponds Marina Resort, 11 Ivory Gull Crescent, Hampton 23664. Commercial marina. 254 seasonal slips and 12 transient slips available. Present during most recent marina inspection were 39 boats under 26' and 168 boats over 26' in wet slips. Services include water, electricity and fuel. Sanitary facilities include 5 commodes, 6 lavatories, 6 showers and 4 urinal for men; and for women there are 8 commodes, 6 lavatories, and 6 showers. Sewage disposal is to HRSD. Boat holding tank pump out facilities, portable toilet dump station facilities and solid waste facilities are provided at this location.

#### **OTHER PLACES WHERE BOATS ARE MOORED**

2. Sarfan Community Mooring, 38 Sarfan Drive, Hampton 23664. Private pier. 6 slips available. Present during last marina inspection were 2 pleasure boats under 26'. There are no services provided at this location. This facility has an exemption to the requirements of providing sanitary facilities, holding tank pump-out facilities and portable toilet dump station facilities.

#### **SECTION E: CONTRIBUTES ANIMAL POLLUTION**

-None-

## **SUMMARY**

Area # 055

Chesapeake Bay: Back River to Old Point Comfort

29 February 2012

### **SECTION B: SEWAGE POLLUTION SOURCES**

#### **1. SEWAGE TREATMENT FACILITIES**

0 – DIRECT – None

0 – INDIRECT – None

0 – TOTAL

#### **2. ON-SITE SEWAGE DEFICIENCIES** – Correction of deficiencies in this section is the responsibility of the local health department.

0 – CONTRIBUTES POLLUTION, DIRECT – None

0 – CONTRIBUTES POLLUTION, INDIRECT – None

0 – CP (Kitchen or Laundry Wastes), DIRECT – None

0 – CP (Kitchen or Laundry Wastes), INDIRECT – None

0 – NO FACILITIES, DIRECT – None

0 – NO FACILITIES, INDIRECT – None

0 – TOTAL

#### **3. POTENTIAL POLLUTION** – Periodic surveillance of these properties will be maintained to determine any status change.

0 – POTENTIAL POLLUTION – None

### **SECTION C: NON-SEWAGE WASTE SITES**

#### **1. INDUSTRIAL WASTE SITES**

0 – DIRECT – None

0 – INDIRECT – None

0 – TOTAL

#### **2. SOLID WASTE DUMPSITES**

0 – DIRECT – None

0 – INDIRECT – None

0 – TOTAL

### **SECTION D: BOATING ACTIVITY**

2 – MARINAS – # 1, 3

1 – OTHER PLACES WHERE BOATS ARE MOORED – # 2

0 – UNDER SURVEILLANCE – None

3 – TOTAL

### **SECTION E: CONTRIBUTES ANIMAL POLLUTION**

0 – DIRECT – None

0 – INDIRECT – None

0 – TOTAL



76°18'0"W

76°16'30"W

Virginia Department of Health  
Division of Shellfish Sanitation

Chesapeake Bay:  
Back River to Old Point Comfort  
# 055  
Shoreline Sanitary Survey

City of Hampton

Date: 29 February 2012  
Survey By: J.D. Dickerson  
Number of Properties Surveyed: 3



0 800 1,600  
Yards

37°6'0"N

37°4'30"N

37°3'0"N

37°1'30"N

37°0'0"N

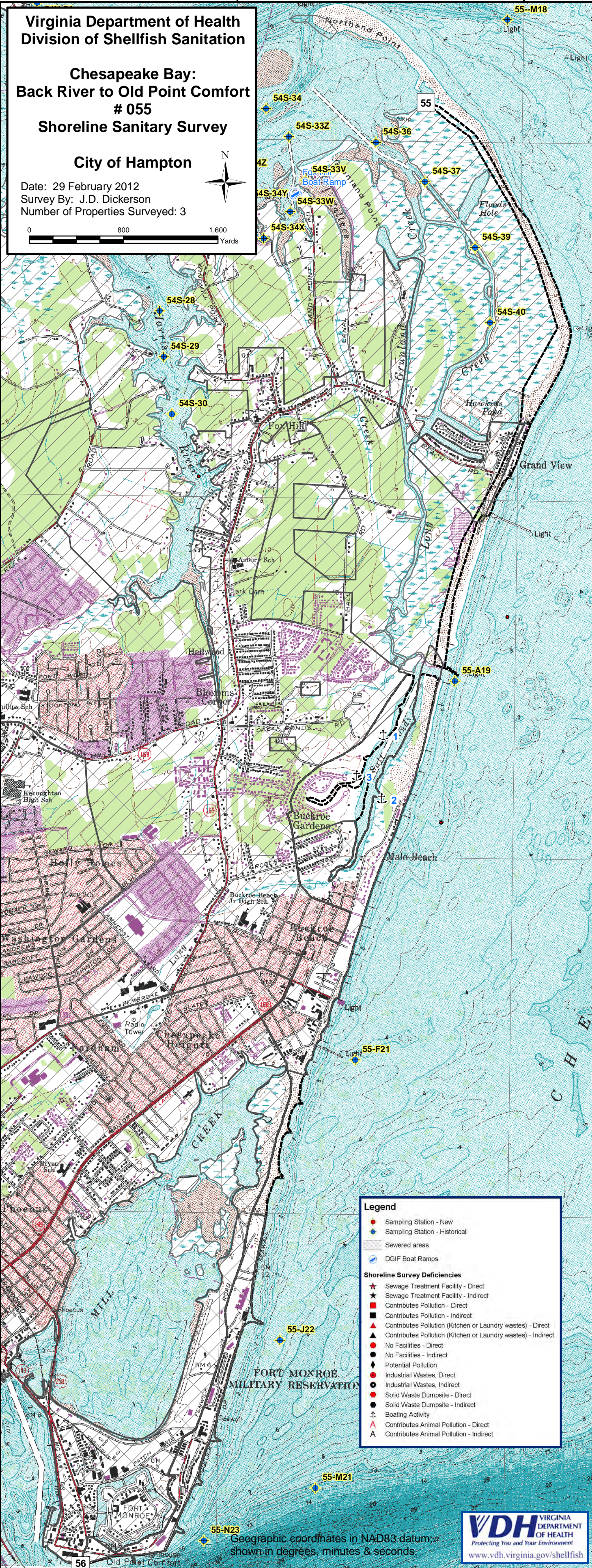
37°6'0"N

37°4'30"N

37°3'0"N

37°1'30"N

37°0'0"N



Legend

- Sampling Station - New
- Sampling Station - Historical
- Sewered areas
- DGIF Boat Ramps
- Shoreline Survey Deficiencies**
  - Sewage Treatment Facility - Direct
  - Sewage Treatment Facility - Indirect
  - Contributes Pollution - Direct
  - Contributes Pollution - Indirect
  - Contributes Pollution (Kitchen or Laundry wastes) - Direct
  - Contributes Pollution (Kitchen or Laundry wastes) - Indirect
  - No Facilities - Direct
  - No Facilities - Indirect
  - Potential Pollution
  - Industrial Wastes, Direct
  - Industrial Wastes, Indirect
  - Solid Waste Dumpsite - Direct
  - Solid Waste Dumpsite - Indirect
  - Boating Activity
  - Contributes Animal Pollution - Direct
  - Contributes Animal Pollution - Indirect

Geographic coordinates in NAD83 datum;  
shown in degrees, minutes & seconds.



76°18'0"W

76°16'30"W