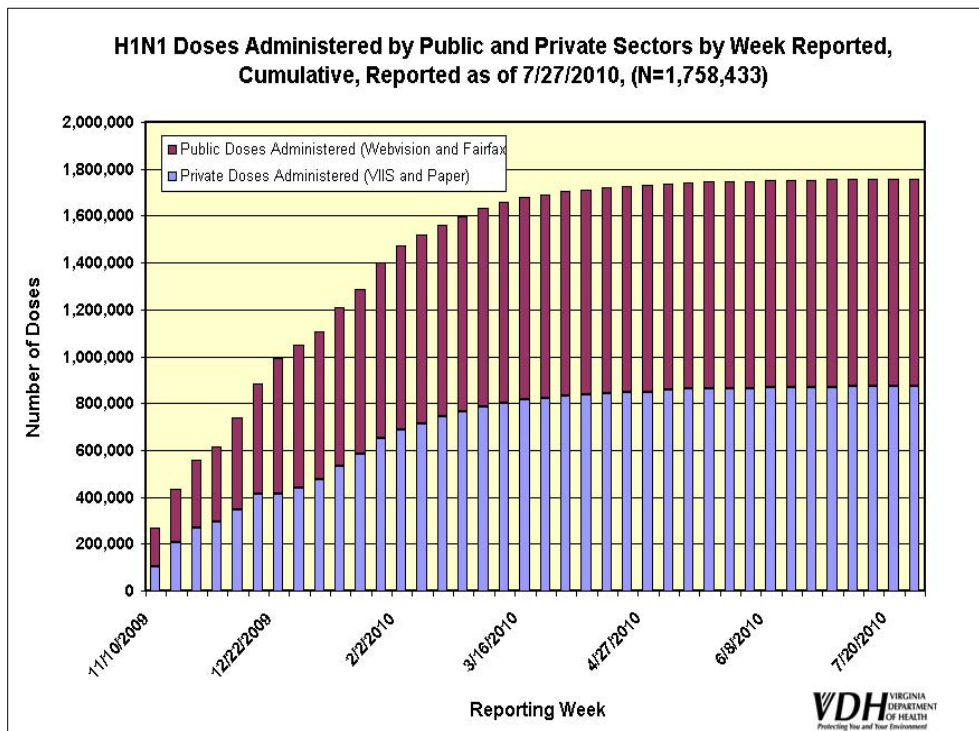
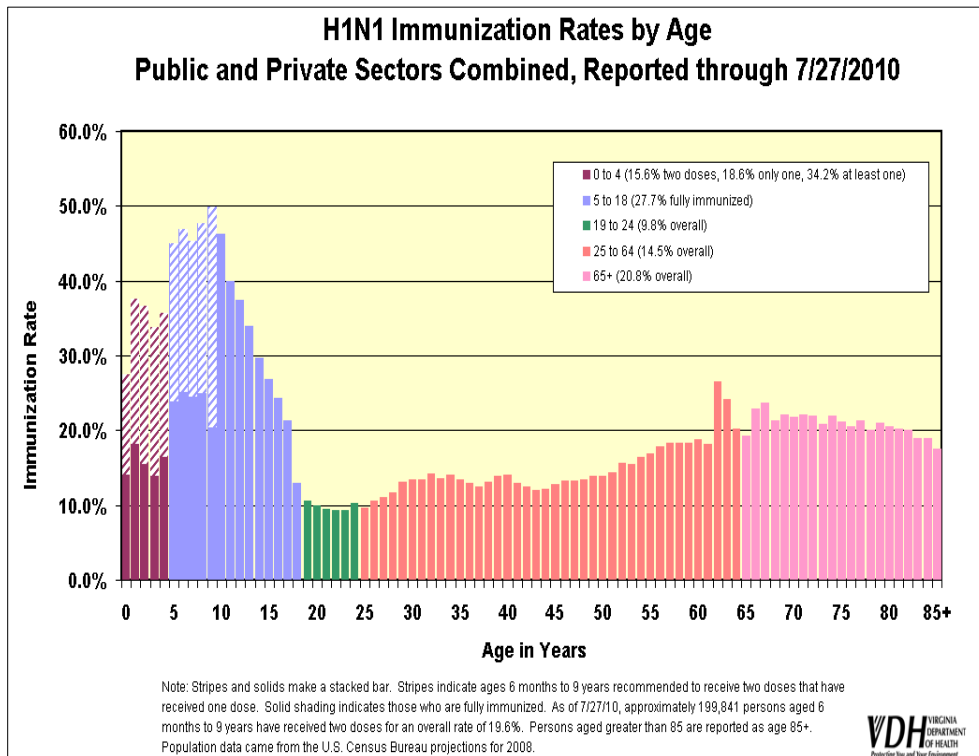
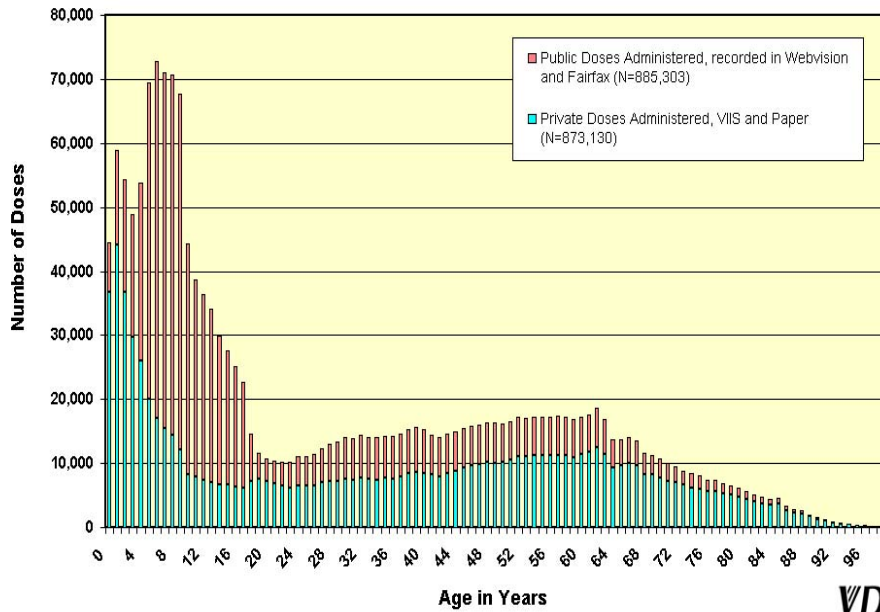


Tracking H1N1 Influenza in Virginia

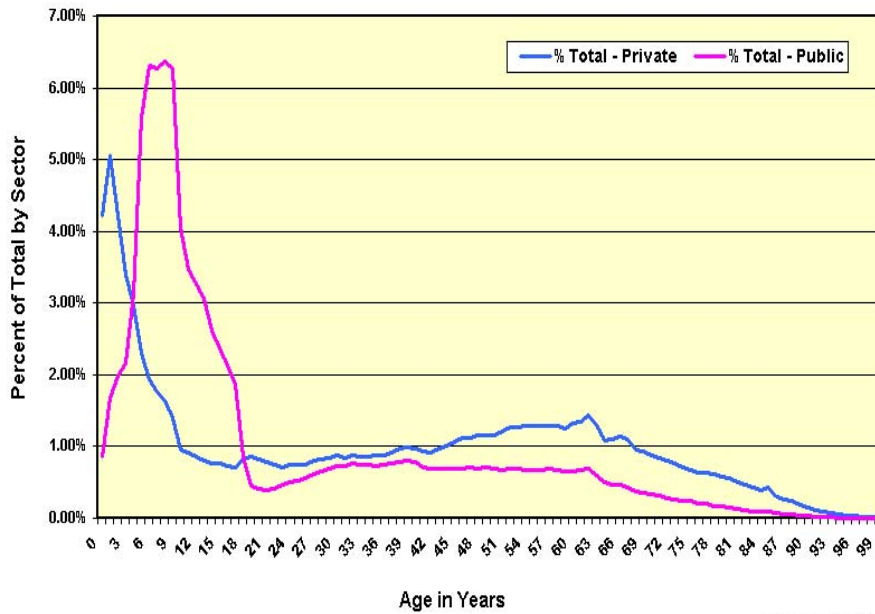
July 24, 2010



H1N1 Vaccine Doses Administered in the Public and Private Sectors by Age, Reported as of 7/27/2010 (N=1,758,433), Cumulative



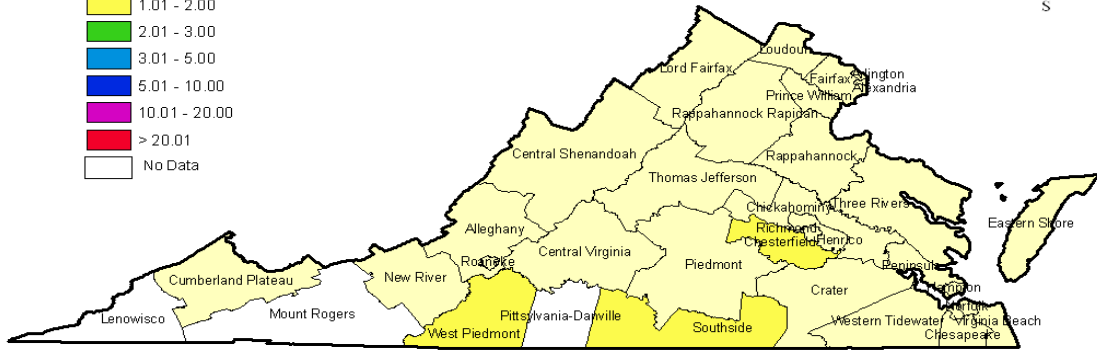
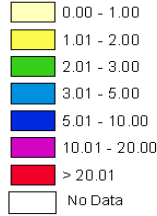
Percent of H1N1 Vaccine Doses Administered in the Public and Private Sectors by Age, Cumulative 10/6/2009-7/27/2010, Reported through 7/27/2010



Percent of Emergency Department and Urgent Care Visits for Influenza Like Illness (ILI) by Health District in Virginia, 2010

Data for Week Ending July 24, 2010

Percent of Visits Due to ILI

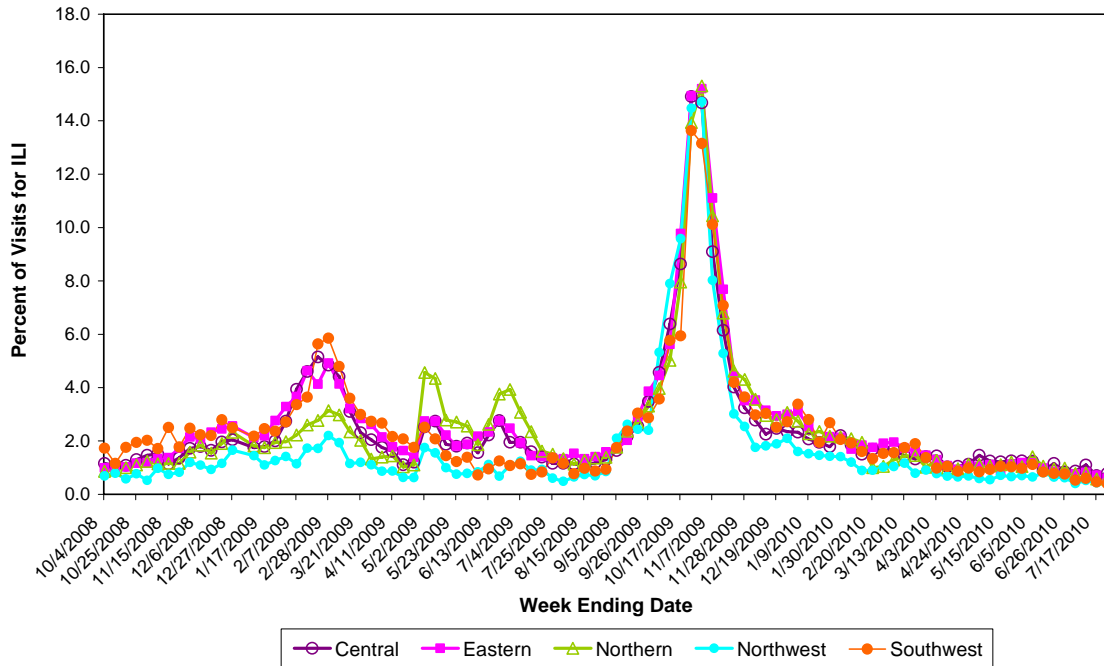


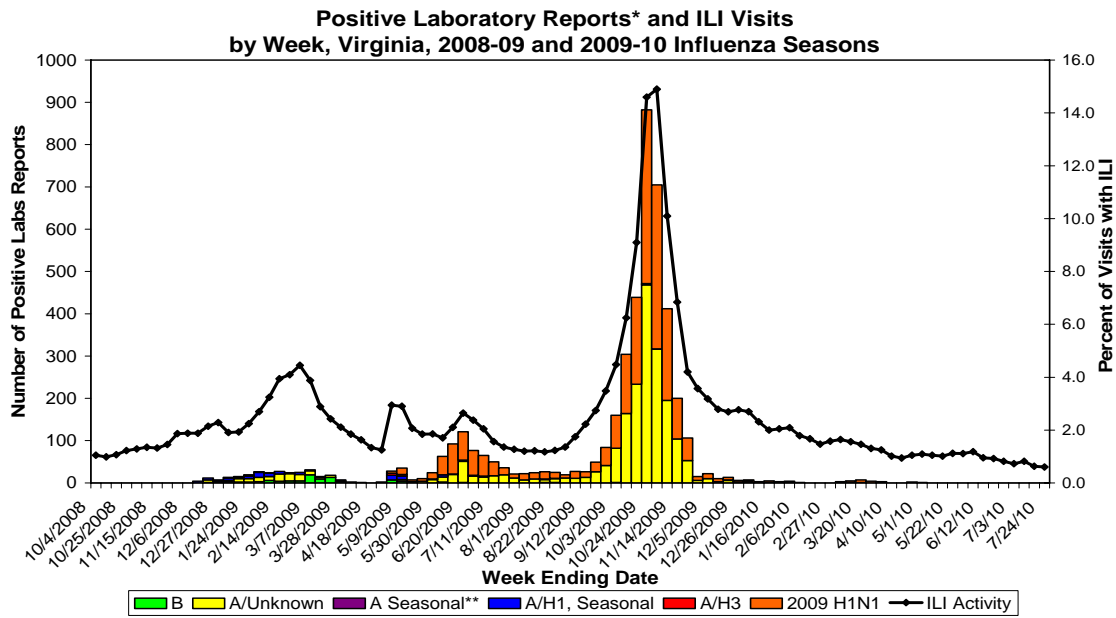
VDH VIRGINIA DEPARTMENT OF HEALTH
Protecting You and Your Environment
www.vdh.virginia.gov

Office of Epidemiology - Division of Surveillance and Investigation
Data mapped by Health District where patient resides.

Statewide, 1.0% of visits were due to ILI. The minimum and maximum by health district were 0.1% and 1.5%, respectively.

Percent of Emergency Department and Urgent Care Visits for Influenza-like Illness (ILI) by Region, Virginia, 2008-09 and 2009-10 Influenza Seasons

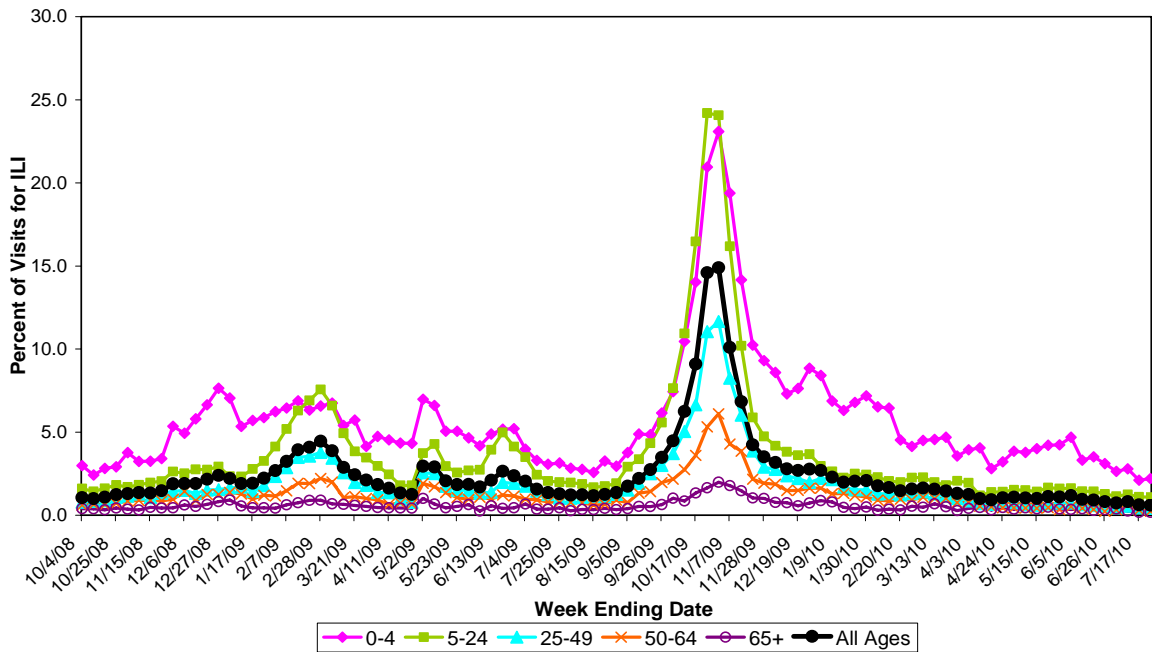




*Positive laboratory reports are presented by week of specimen collection. Data are added as new test results become available; therefore, information for the most recent week will always be incomplete.

** 'A Seasonal' indicates a positive Influenza A finding that is negative for Novel H1N1 with no further subtyping.

Percent of Emergency Department and Urgent Care Visits for Influenza-like Illness (ILI) by Age Group, Virginia, 2008-09 and 2009-10 Influenza Seasons



Novel H1N1 Influenza Deaths in Virginia

As of July 28, 2010, 2010, there have been 37 confirmed H1N1-associated deaths reported to VDH since the beginning of the novel H1N1 influenza pandemic; three occurred in children and 34 in adults.