

VIRGINIA STD SURVEILLANCE REPORT

Table 1CT. New Chlamydia Diagnoses

Diagnosed Cases of Chlamydia											
Year of diagnosis:	2011	2012	2013	2014	2015	2011	2012	2013	2014	2015	5 Year Trend
	No.	No.	No.	No.	No.	Rate	Rate	Rate	Rate	Rate	
Total	34,906	34,615	33,818	35,250	36,252	431.1	422.9	409.4	423.4	435.4	
Gender											
Male	9,695	10,137	10,237	11,042	11,757	243.8	252.1	252.0	269.6	287.1	
Female	25,125	24,441	23,546	24,162	24,459	609.8	586.9	560.9	571.1	578.1	
Unknown	86	37	35	46	36	--	--	--	--	--	
Age at Chlamydia Diagnosis											
<10	22	19	10	17	8	2.1	1.8	1.0	1.6	0.8	
10 - 14	283	250	223	214	208	55.0	48.4	42.9	41.0	39.8	
15 - 19	10,592	10,001	9,108	8,886	8,933	1,946.1	1,845.9	1,695.5	1,654.4	1,663.2	
20 - 24	14,512	14,444	14,181	14,721	15,259	2,484.1	2,436.4	2,357.5	2,435.2	2,524.2	
25 - 29	5,461	5,608	5,841	6,365	6,682	952.0	965.1	998.3	1,073.8	1,127.3	
30 - 34	2,152	2,314	2,415	2,620	2,746	394.2	411.6	419.5	449.8	471.4	
35 - 39	914	922	1,020	1,164	1,189	174.8	176.8	194.1	217.6	222.3	
40 - 44	451	495	487	587	544	79.0	86.8	86.4	106.0	98.2	
45 - 49	281	263	278	308	298	46.2	44.0	47.8	54.3	52.5	
50 - 54	121	143	130	166	190	20.1	21.5	21.4	27.3	31.2	
55 - 59	43	79	55	109	96	8.1	14.5	9.9	19.3	17.0	
60 - 64	23	16	18	38	48	4.9	3.5	3.9	8.0	10.1	
65+	11	18	15	28	22	1.1	1.7	1.4	2.4	1.9	
Other/ Unknown	40	43	37	27	29	--	--	--	--	--	
Race/Ethnicity											
Black, non-Hispanic	17,265	16,213	15,298	15,457	15,093	1,075.2	1,001.3	937.0	938.6	916.5	
White, non-Hispanic	6,789	7,485	7,051	7,757	8,424	127.9	140.3	131.8	144.9	157.3	
Hispanic (all races)	1,204	1,295	1,396	1,523	1,687	182.2	188.4	195.9	206.6	228.8	
Other	554	670	733	882	972	--	--	--	--	--	
Unknown	9,094	8,952	9,340	9,631	10,076	--	--	--	--	--	

All data reported to the Virginia Department of Health as of June 01, 2016 . Other race includes multi-race, other, Asian/ Pacific Islander and Amer. Indian/ Alaska Native. Rates for annual case counts less than 12 are considered unstable and should be interpreted with caution. Rates per 100,000 population.

-- Rate unable to be calculated

Figure 1CT. Rate of chlamydia diagnoses by race/ ethnicity, 2011-2015

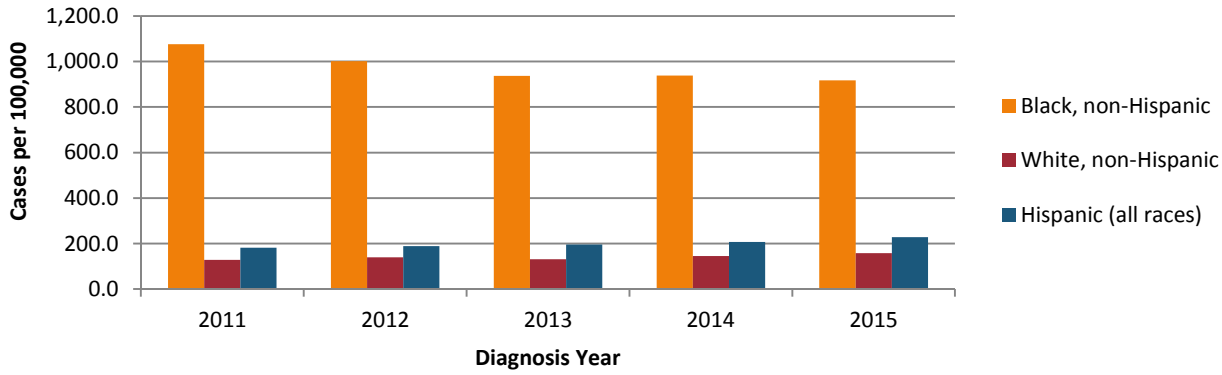


Figure 2CT. Rate of chlamydia diagnoses by gender, 2011-2015

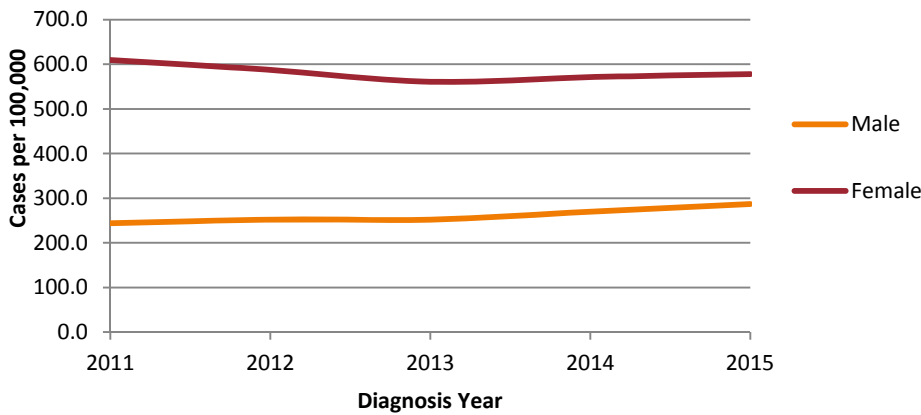
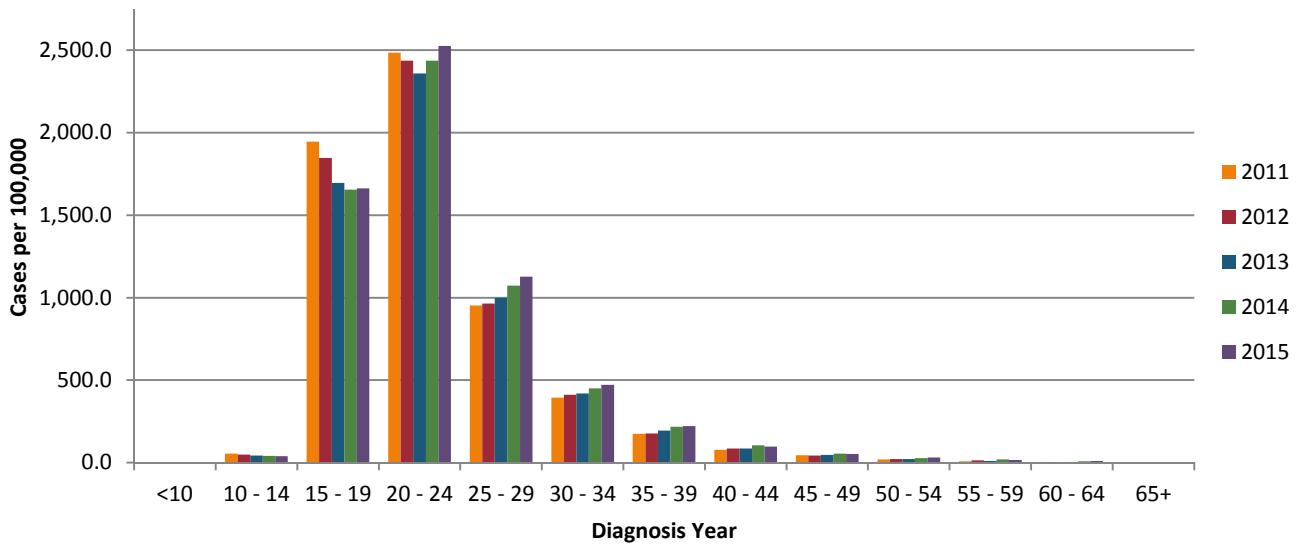


Figure 3CT. Rate of chlamydia diagnoses by age, 2011-2015



2015

VIRGINIA STD SURVEILLANCE REPORT

Table 2CT. Chlamydia Diagnoses by Gender, Diagnosis Age, Health Region and Race/Ethnicity, 2015

	Black, non-Hispanic		White, non-Hispanic		Hispanic (all races)		Other		Unknown	
	No.	%	No.	%	No.	%	No.	%	No.	%
Total	15,093	100%	8,424	100%	1,687	100%	972	100%	10,076	100%
Gender										
Male	5,269	35%	2,503	30%	511	30%	263	27%	3,211	32%
Female	9,816	65%	5,915	70%	1,175	70%	708	73%	6,845	68%
Unknown	8	0%	6	0%	1	0%	1	0%	20	0%
Age at Chlamydia Diagnosis										
< 10	3	0%	1	0%	0	0%	0	0%	4	0%
10 - 14	87	1%	22	0%	7	0%	9	1%	83	1%
15 - 19	3,795	25%	1,880	22%	334	20%	246	25%	2,678	27%
20 - 24	6,514	43%	3,614	43%	646	38%	386	40%	4,099	41%
25 - 29	2,741	18%	1,660	20%	371	22%	187	19%	1,723	17%
30 - 34	1,106	7%	694	8%	174	10%	78	8%	694	7%
35 - 39	461	3%	269	3%	87	5%	38	4%	334	3%
40 - 44	186	1%	120	1%	44	3%	19	2%	175	2%
45 - 49	96	1%	66	1%	14	1%	1	0%	121	1%
50 - 54	55	0%	53	1%	5	0%	2	0%	75	1%
55 - 59	29	0%	25	0%	1	0%	2	0%	39	0%
60 - 64	16	0%	8	0%	1	0%	2	0%	21	0%
65+	2	0%	5	0%	0	0%	2	0%	13	0%
Other/Unknown	2	0%	7	0%	3	0%	0	0%	17	0%
Region										
Central	4,583	30%	1,382	16%	253	15%	162	17%	2,365	23%
Eastern	6,970	46%	2,355	28%	235	14%	310	32%	2,467	24%
Northern	1,190	8%	1,286	15%	908	54%	334	34%	3,157	31%
Northwest	832	6%	1,647	20%	205	12%	100	10%	1,088	11%
Southwest	1,518	10%	1,754	21%	86	5%	66	7%	999	10%

All data reported to the Virginia Department of Health as of June 01, 2016 . Other race includes multi-race, other, Asian/ Pacific Islander and Amer. Indian/ Alaska Native.

Figure 4CT. Chlamydia diagnoses by race/ ethnicity and region, 2015

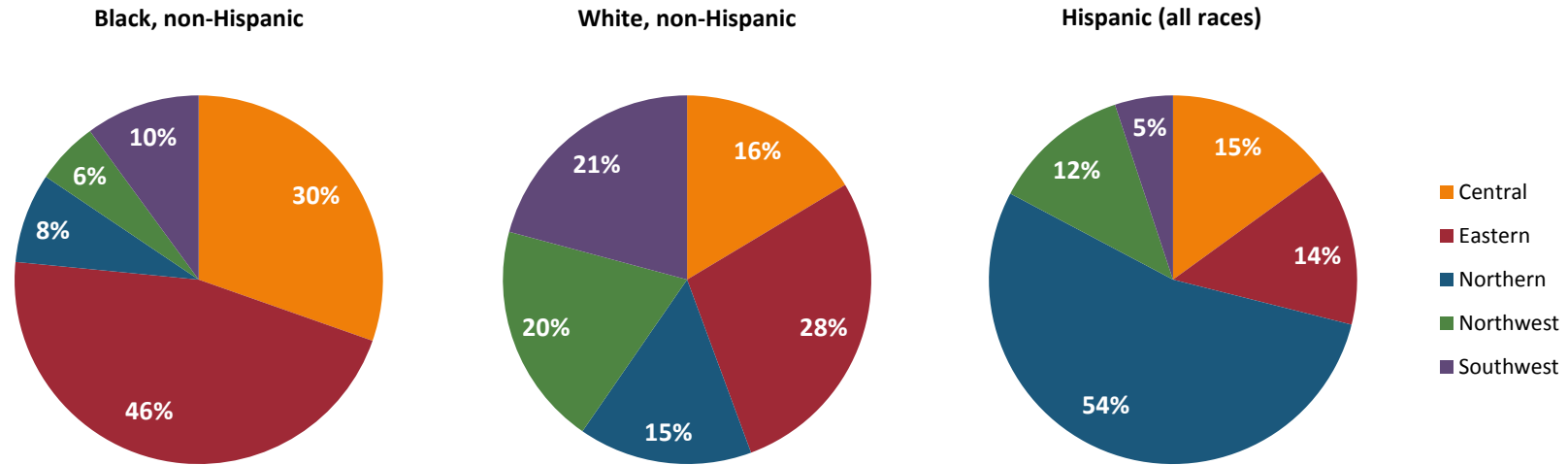


Figure 5CT. Chlamydia diagnoses by region and race/ ethnicity, 2015

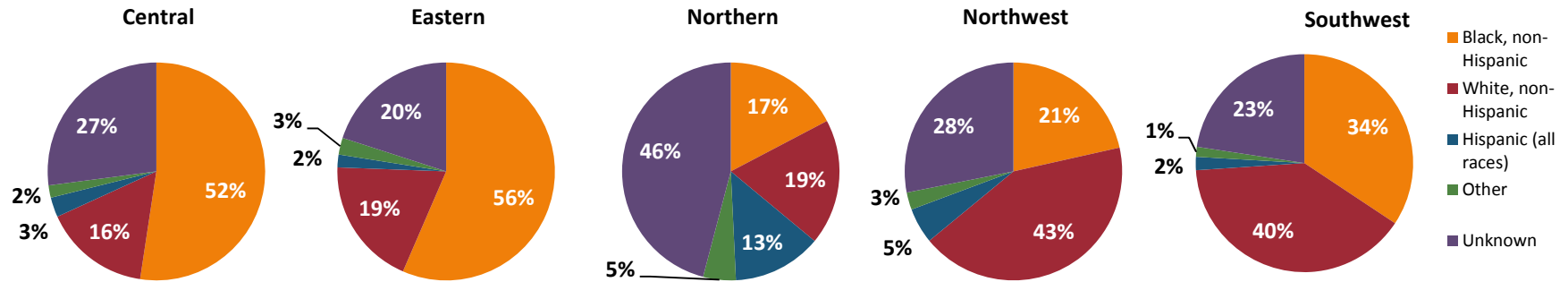


Figure 6CT. Chlamydia diagnoses by region and race/ ethnicity, 2015

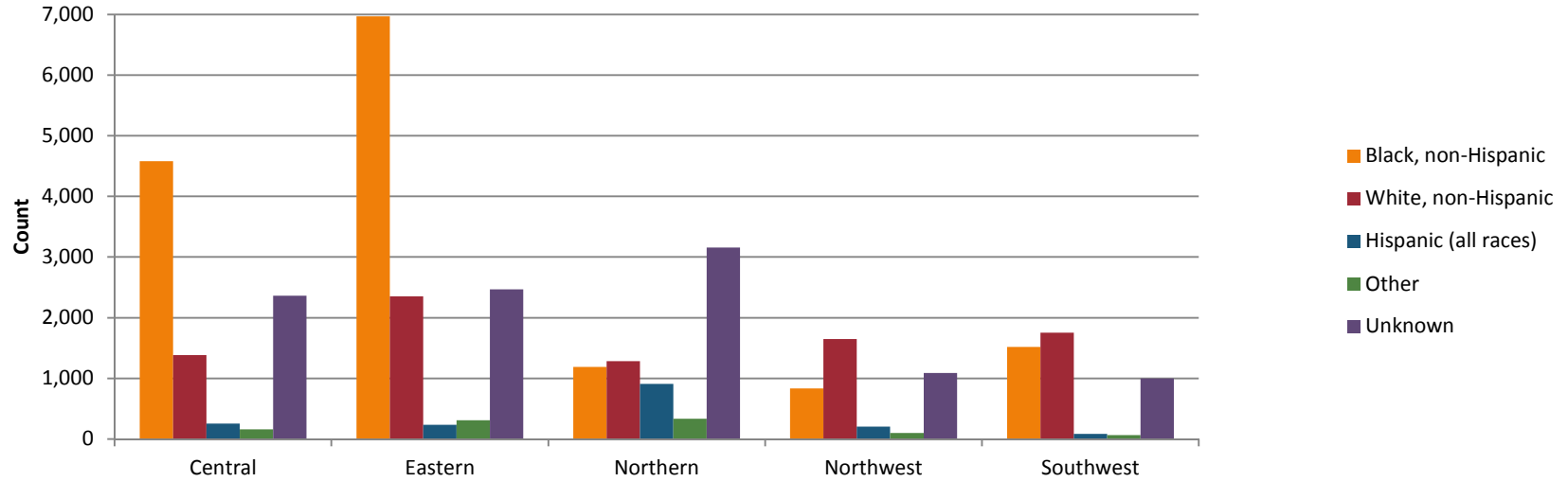
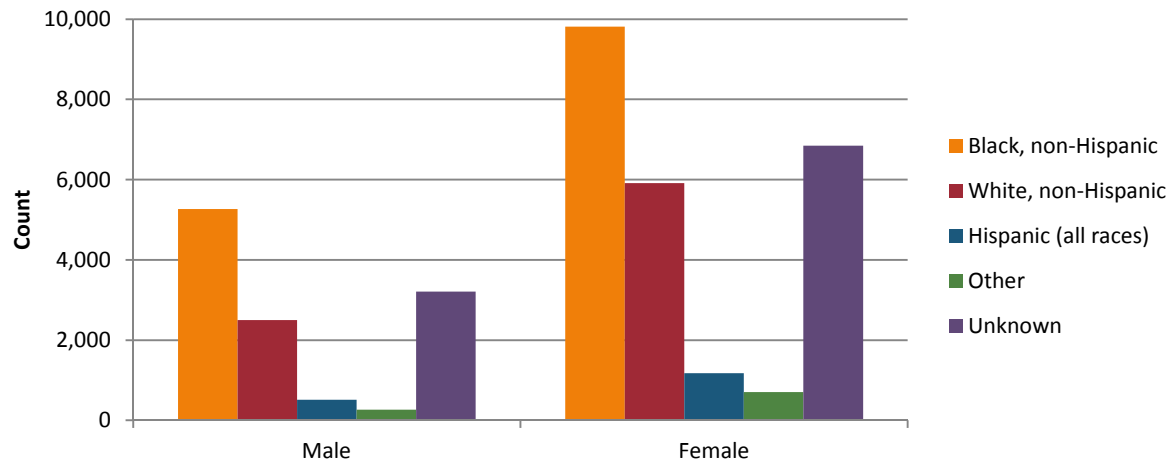


Figure 7CT. Chlamydia diagnoses by gender and race/ ethnicity, 2015



VIRGINIA STD SURVEILLANCE REPORT

Table 3CT. Chlamydia Diagnoses by Health District and Report Source, 2015

	Correctional facility		HD - Family Planning		HD - Other Clinic		HD - STD Clinic		Job Corps		Military		Private - Emergency Room		Private - Hospital (Inpatient)		Private - Lab		Private - MD/ HMO		Private - Prenatal		Other/ Unknown	
	No.	%	No.	%	No.	%	No.	%	No.	%	No.	%	No.	%	No.	%	No.	%	No.	%	No.	%	No.	%
Total	253	100%	1,503	100%	598	100%	6,151	100%	44	100%	1,378	100%	4,906	100%	44	100%	128	100%	21,037	100%	167	100%	43	100%
Central																								
Chesterfield	55	22%	67	4%	8	1%	236	4%	0	0%	14	1%	178	4%	0	0%	2	2%	939	4%	8	5%	0	0%
Chickahominy	14	6%	19	1%	7	1%	33	1%	0	0%	1	0%	44	1%	0	0%	1	1%	287	1%	3	2%	0	0%
Crater	22	9%	128	9%	15	3%	267	4%	0	0%	163	12%	98	2%	0	0%	0	0%	751	4%	4	2%	1	2%
Henrico	22	9%	39	3%	17	3%	263	4%	1	2%	8	1%	368	8%	0	0%	4	3%	912	4%	14	8%	0	0%
Piedmont	53	21%	30	2%	3	1%	70	1%	2	5%	0	0%	68	1%	1	2%	1	1%	272	1%	0	0%	0	0%
Richmond City	21	8%	117	8%	41	7%	466	8%	2	5%	3	0%	956	19%	0	0%	11	9%	1,195	6%	8	5%	2	5%
Southside	2	1%	18	1%	2	0%	76	1%	0	0%	0	0%	64	1%	0	0%	0	0%	246	1%	1	1%	1	2%
Eastern																								
Chesapeake	1	0%	55	4%	13	2%	227	4%	1	2%	50	4%	155	3%	1	2%	3	2%	691	3%	0	0%	2	5%
Eastern Shore	0	0%	28	2%	7	1%	49	1%	0	0%	0	0%	8	0%	0	0%	0	0%	209	1%	11	7%	0	0%
Hampton	5	2%	46	3%	15	3%	249	4%	2	5%	67	5%	167	3%	0	0%	13	10%	672	3%	0	0%	0	0%
Norfolk	11	4%	49	3%	89	15%	433	7%	5	11%	343	25%	555	11%	0	0%	10	8%	1,132	5%	0	0%	11	26%
Peninsula	3	1%	61	4%	15	3%	365	6%	3	7%	137	10%	359	7%	0	0%	21	16%	1,255	6%	0	0%	1	2%
Portsmouth	5	2%	41	3%	11	2%	230	4%	1	2%	89	6%	204	4%	0	0%	4	3%	452	2%	2	1%	0	0%
Three Rivers	0	0%	41	3%	0	0%	56	1%	0	0%	0	0%	49	1%	0	0%	2	2%	307	1%	1	1%	1	2%
Virginia Beach	2	1%	34	2%	19	3%	332	5%	0	0%	207	15%	323	7%	1	2%	5	4%	1,399	7%	3	2%	5	12%
Western Tidewater	5	2%	67	4%	11	2%	180	3%	2	5%	20	1%	161	3%	0	0%	1	1%	458	2%	1	1%	0	0%
Northern																								
Alexandria	0	0%	42	3%	17	3%	130	2%	0	0%	15	1%	4	0%	1	2%	0	0%	416	2%	30	18%	0	0%
Arlington	3	1%	16	1%	19	3%	144	2%	0	0%	27	2%	5	0%	26	59%	2	2%	597	3%	23	14%	0	0%
Fairfax	3	1%	12	1%	126	21%	417	7%	2	5%	111	8%	24	0%	10	23%	2	2%	2,024	10%	2	1%	5	12%
Loudoun	1	0%	8	1%	8	1%	70	1%	0	0%	1	0%	7	0%	0	0%	1	1%	607	3%	19	11%	3	7%
Prince William	2	1%	37	2%	22	4%	210	3%	1	2%	81	6%	30	1%	2	5%	2	2%	1,501	7%	6	4%	1	2%
Northwest																								
Central Shenandoah	0	0%	70	5%	84	14%	211	3%	0	0%	1	0%	73	1%	0	0%	1	1%	483	2%	6	4%	0	0%
Lord Fairfax	0	0%	44	3%	4	1%	128	2%	0	0%	0	0%	86	2%	0	0%	28	22%	336	2%	0	0%	8	19%
Rappahannock	2	1%	12	1%	7	1%	172	3%	1	2%	37	3%	127	3%	1	2%	0	0%	794	4%	17	10%	0	0%
Rappahannock/ Rapidan	2	1%	44	3%	4	1%	92	1%	0	0%	2	0%	40	1%	0	0%	0	0%	265	1%	5	3%	0	0%
Thomas Jefferson	1	0%	25	2%	4	1%	156	3%	0	0%	0	0%	211	4%	1	2%	5	4%	282	1%	0	0%	0	0%
Southwest																								
Alleghany	0	0%	28	2%	2	0%	74	1%	0	0%	0	0%	32	1%	0	0%	0	0%	229	1%	0	0%	0	0%
Central Virginia	0	0%	41	3%	10	2%	139	2%	12	27%	0	0%	177	4%	0	0%	0	0%	597	3%	0	0%	0	0%
Cumberland Plateau	4	2%	14	1%	1	0%	41	1%	0	0%	0	0%	3	0%	0	0%	2	2%	67	0%	0	0%	0	0%

Table 3CT

Table 3CT. Chlamydia Diagnoses by Health District and Report Source, 2015

	Correctional facility		HD - Family Planning		HD - Other Clinic		HD - STD Clinic		Job Corps		Military		Private - Emergency Room		Private - Hospital (Inpatient)		Private - Lab		Private - MD/ HMO		Private - Prenatal		Other/ Unknown	
	No.	%	No.	%	No.	%	No.	%	No.	%	No.	%	No.	%	No.	%	No.	%	No.	%	No.	%	No.	%
Lenowisco	2	1%	22	1%	0	0%	50	1%	5	11%	1	0%	4	0%	0	0%	0	0%	99	0%	0	0%	0	0%
Mount Rogers	2	1%	123	8%	1	0%	98	2%	4	9%	0	0%	23	0%	0	0%	0	0%	170	1%	2	1%	0	0%
New River	0	0%	29	2%	3	1%	117	2%	0	0%	0	0%	32	1%	0	0%	2	2%	418	2%	1	1%	2	5%
Pittsylvania/ Danville	2	1%	38	3%	1	0%	170	3%	0	0%	0	0%	97	2%	0	0%	2	2%	263	1%	0	0%	0	0%
Roanoke City	8	3%	25	2%	11	2%	144	2%	0	0%	0	0%	96	2%	0	0%	1	1%	460	2%	0	0%	0	0%
West Piedmont	0	0%	33	2%	1	0%	56	1%	0	0%	0	0%	78	2%	0	0%	2	2%	252	1%	0	0%	0	0%

VIRGINIA STD SURVEILLANCE REPORT

Table 4CT. Chlamydia Diagnoses by Health Region and City/County

Year of diagnosis:	Diagnosed Cases of Chlamydia										5 year trend
	2011	2012	2013	2014	2015	2011	2012	2013	2014	2015	
	No.	No.	No.	No.	No.	Rate	Rate	Rate	Rate	Rate	
Central	8,338	7,887	7,933	8,381	8,663	612.2	572.6	571.5	598.2	619.8	
Amelia Co.	42	47	35	33	40	328.0	368.4	274.6	256.7	311.2	
Brunswick Co.	98	80	85	101	104	569.6	470.3	500.8	612.2	630.4	
Buckingham Co.	67	78	62	45	61	387.8	456.5	361.8	266.1	360.7	
Charles City Co.	43	38	29	25	27	593.8	530.9	406.7	356.0	384.5	
Charlotte Co.	69	63	36	36	49	551.8	507.9	292.6	294.5	400.8	
Chesterfield Co.	1,240	1,235	1,209	1,270	1,330	387.2	381.3	368.9	382.0	400.0	
Colonial Heights (city) Co.	76	83	78	82	103	435.8	474.9	442.3	462.5	580.9	
Cumberland Co.	50	41	43	39	41	501.6	416.3	436.9	396.9	417.2	
Dinwiddie Co.	147	123	119	119	116	526.5	439.4	426.5	427.2	416.4	
Emporia (city) Co.	67	47	45	74	61	1,141.2	818.8	805.3	1,354.8	1,116.8	
Goochland Co.	45	42	60	65	69	205.6	196.7	277.4	296.3	314.6	
Greensville Co.	65	53	55	67	58	536.7	447.2	462.7	573.6	496.5	
Halifax Co.	189	149	178	143	163	524.2	415.6	502.8	406.3	463.1	
Hanover Co.	206	212	194	256	264	205.3	210.6	191.5	251.2	259.0	
Henrico Co.	1,376	1,419	1,547	1,613	1,648	443.2	450.6	485.5	501.0	511.9	
Hopewell (city) Co.	189	187	193	180	258	837.0	836.8	870.8	811.0	1,162.4	
Lunenburg Co.	73	34	56	47	58	567.0	270.1	447.0	377.0	465.3	
Mecklenburg Co.	150	144	163	142	142	459.8	453.6	518.7	455.2	455.2	
New Kent Co.	34	34	39	56	49	180.6	177.4	199.9	279.7	244.7	
Nottoway Co.	79	63	91	122	120	498.7	398.0	576.9	783.1	770.3	
Petersburg (city) Co.	601	492	578	594	538	1,859.2	1,538.8	1,776.4	1,816.5	1,645.2	
Powhatan Co.	0	0	0	0	1	241.9	192.0	205.2	214.4	260.1	
Prince Edward Co.	68	54	58	61	74	634.0	507.8	486.8	541.7	567.7	
Prince George Co.	148	118	111	125	131	1,086.0	744.4	706.0	677.7	800.9	
Richmond (city) Co.	397	275	263	253	299	1,349.2	1,297.1	1,204.0	1,281.6	1,295.4	
Surry Co.	2,773	2,728	2,578	2,792	2,822	663.7	701.3	413.9	603.8	544.9	
Sussex Co.	46	48	28	41	37	761.1	467.8	516.5	501.4	696.9	
Eastern	13,767	13,211	12,346	12,788	12,337	757.5	721.2	671.5	692.5	668.1	
Accomack Co.	244	278	175	256	227	731.9	833.8	527.9	775.3	687.4	
Chesapeake (city) Co.	1,318	1,298	1,211	1,260	1,199	585.6	568.3	525.2	539.9	513.8	
Essex Co.	89	74	55	55	50	794.3	658.8	489.8	495.4	450.3	
Franklin (city) Co.	107	97	83	85	92	1,245.9	1,137.4	960.9	997.0	1,079.1	
Gloucester Co.	68	86	83	82	98	184.3	233.2	225.3	220.8	263.9	
Hampton (city) Co.	1,456	1,331	1,278	1,395	1,236	1,067.4	972.7	934.9	1,019.1	903.0	
Isle of Wight Co.	152	133	117	146	152	429.9	375.7	328.1	405.5	422.1	
James City Co.	149	165	153	186	199	218.5	239.2	217.0	256.3	274.2	
King William Co.	68	46	46	33	78	425.5	287.8	285.8	203.9	481.9	
King and Queen Co.	26	35	14	23	32	371.6	496.7	196.4	320.6	446.0	
Lancaster Co.	49	48	29	43	30	434.3	427.2	260.1	389.4	271.6	
Mathews Co.	10	16	15	20	20	111.6	180.1	168.6	226.3	226.3	
Middlesex Co.	43	37	30	33	19	396.2	341.9	278.8	308.5	177.6	
Newport News (city) Co.	1,838	1,755	1,587	1,775	1,755	1,023.3	971.1	871.9	970.1	959.2	
Norfolk (city) Co.	3,108	2,878	3,124	2,837	2,638	1,281.0	1,171.0	1,269.2	1,155.9	1,074.9	
Northampton Co.	96	89	63	71	85	775.6	728.0	519.6	585.8	701.3	
Northumberland Co.	58	59	29	56	51	465.5	477.9	237.7	457.1	416.3	
Poquoson (city) Co.	25	16	15	20	17	208.3	132.3	123.9	166.0	141.1	
Portsmouth (city) Co.	1,112	1,087	1,031	1,049	1,039	1,162.2	1,126.8	1,071.7	1,092.7	1,082.2	
Richmond Co.	42	26	25	27	22	455.5	287.0	279.2	303.3	247.1	
Southampton Co.	95	87	80	84	91	516.1	472.6	441.3	465.1	503.9	
Suffolk (city) Co.	684	654	545	560	571	805.4	767.8	635.7	645.1	657.8	
Virginia Beach (city) Co.	2,527	2,518	2,239	2,336	2,330	570.8	563.3	499.2	518.0	516.7	
Westmoreland Co.	80	97	66	78	57	454.7	553.5	374.7	446.3	326.1	
Williamsburg (city) Co.	139	157	93	85	73	962.3	1,035.1	611.6	578.6	496.9	
York Co.	184	144	160	193	176	278.2	217.7	241.4	290.9	265.3	

Table 4CT

Table 4CT. Chlamydia Diagnoses by Health Region and City/County

Diagnosed Cases of Chlamydia											
Year of diagnosis:	2011	2012	2013	2014	2015	2011	2012	2013	2014	2015	5 year trend
	No.	No.	No.	No.	No.	Rate	Rate	Rate	Rate	Rate	
Northern	4,595	5,294	5,546	6,015	6,875	200.2	225.6	232.2	248.6	284.1	
Alexandria (city) Co.	552	472	558	605	655	382.5	322.6	374.8	401.8	435.0	
Arlington Co.	508	554	593	746	862	235.2	250.6	263.7	328.8	379.9	
Fairfax (city) Co.	102	229	134	142	134	452.3	976.1	559.0	580.0	547.3	
Fairfax Co.	1,653	1,816	2,061	2,164	2,534	150.2	162.3	182.2	190.2	222.8	
Falls Church (city) Co.	46	125	70	60	70	360.8	944.9	518.2	441.1	514.7	
Loudoun Co.	442	533	544	597	725	135.8	158.2	155.6	164.4	199.7	
Manassas (city) Co.	172	162	189	177	192	437.7	399.0	453.2	420.6	456.3	
Manassas Park (city) Co.	31	45	38	41	48	202.2	284.8	235.3	270.2	316.3	
Prince William Co.	1,089	1,358	1,359	1,483	1,655	259.9	315.6	309.9	332.4	371.0	
Northwest	3,564	3,865	3,690	3,616	3,872	284.4	305.4	288.7	279.5	299.3	
Albemarle Co.	205	225	232	219	249	203.9	220.0	225.2	209.6	238.3	
Augusta Co.	156	139	151	127	155	212.1	188.7	204.3	171.9	209.9	
Bath Co.	4	4	7	10	5	85.9	86.0	151.6	219.2	109.6	
Buena Vista (city) Co.	21	30	24	17	17	316.5	447.3	359.3	257.5	257.5	
Caroline Co.	108	106	100	89	118	376.6	365.9	341.3	298.9	396.3	
Charlottesville (city) Co.	313	298	296	202	271	719.4	678.0	667.4	443.1	594.4	
Clarke Co.	24	24	23	27	30	168.3	167.6	160.3	187.2	208.0	
Culpeper Co.	157	140	153	142	129	330.7	292.2	315.4	288.8	262.4	
Fauquier Co.	107	135	126	145	148	161.9	202.9	187.5	212.5	216.9	
Fluvanna Co.	71	57	47	40	36	272.4	219.5	180.9	153.3	138.0	
Frederick Co.	153	185	173	188	189	192.1	230.3	212.7	228.2	229.4	
Fredericksburg (city) Co.	222	206	198	215	184	864.1	754.4	703.8	758.4	649.0	
Greene Co.	47	41	34	28	23	251.9	218.4	180.8	147.1	120.9	
Harrisonburg (city) Co.	162	189	234	263	315	324.2	370.7	455.3	501.2	600.3	
Highland Co.	1	1	0	2	1	44.1	44.5	0.0	89.0	44.5	
King George Co.	83	74	75	67	60	343.5	302.0	300.9	264.1	236.5	
Lexington (city) Co.	25	24	20	12	14	357.4	343.0	278.9	164.1	191.5	
Louisa Co.	59	88	79	76	82	176.7	263.2	232.7	221.3	238.7	
Madison Co.	22	24	23	41	38	167.1	181.8	174.2	311.6	288.8	
Nelson Co.	31	33	36	29	24	205.3	222.6	243.4	195.3	161.6	
Orange Co.	73	74	94	116	134	215.1	216.1	271.0	331.2	382.6	
Page Co.	35	60	70	48	28	146.1	251.1	293.9	201.3	117.4	
Rappahannock Co.	10	8	8	21	5	134.3	107.3	107.0	285.3	67.9	
Rockbridge Co.	58	56	56	48	44	259.2	250.1	251.0	215.0	197.1	
Rockingham Co.	101	138	149	161	175	131.9	178.3	191.7	206.0	223.9	
Shenandoah Co.	47	87	62	85	100	111.1	204.3	145.3	197.6	232.4	
Spotsylvania Co.	372	399	365	376	359	299.2	317.5	286.6	291.0	277.9	
Stafford Co.	383	406	342	390	449	289.9	302.2	250.0	278.6	320.7	
Staunton (city) Co.	114	93	88	84	96	479.6	388.8	361.4	342.3	391.2	
Warren Co.	100	134	148	123	124	264.9	352.0	382.4	315.5	318.1	
Waynesboro (city) Co.	83	92	64	71	107	389.5	435.9	301.0	332.3	500.8	
Winchester (city) Co.	217	295	213	154	163	816.2	1,097.4	782.6	559.1	591.8	
Southwest	4,550	4,302	4,242	4,382	4,410	336.0	317.4	312.7	323.9	326.3	
Alleghany Co.	19	43	40	46	35	117.5	264.9	247.5	290.8	221.2	
Amherst Co.	138	113	111	100	121	429.0	348.9	345.0	312.1	377.6	
Appomattox Co.	41	47	57	64	66	272.6	310.7	373.6	418.9	432.0	
Bedford (city) Co.	18	18	18	--	--	291.2	301.8	302.6	--	--	
Bedford Co.	82	89	95	95	111	118.4	127.9	136.1	124.0	144.9	
Bland Co.	0	7	2	7	6	0.0	103.9	29.7	105.7	90.6	
Botetourt Co.	62	41	27	50	51	188.3	123.7	81.8	151.1	154.1	
Bristol (city) Co.	66	56	47	68	68	371.8	317.1	271.0	395.7	395.7	
Buchanan Co.	13	15	3	11	27	55.1	62.9	12.7	47.6	116.9	
Campbell Co.	148	175	162	191	159	268.9	317.2	293.3	348.0	289.7	
Carroll Co.	61	57	38	63	51	203.5	190.9	127.2	212.7	172.2	
Covington (city) Co.	22	26	26	24	19	370.4	450.5	446.9	413.7	327.5	

Table 4CT

Table 4CT. Chlamydia Diagnoses by Health Region and City/County

Year of diagnosis:	Diagnosed Cases of Chlamydia										5 year trend
	2011	2012	2013	2014	2015	2011	2012	2013	2014	2015	
	No.	No.	No.	No.	No.	Rate	Rate	Rate	Rate	Rate	
Craig Co.	6	8	3	2	7	117.7	153.5	57.6	38.2	133.7	
Danville (city) Co.	457	390	400	430	387	1,066.5	907.1	932.2	1,013.1	911.8	
Dickenson Co.	27	44	23	32	14	171.5	280.4	148.5	209.0	91.5	
Floyd Co.	28	30	19	21	20	182.1	194.9	122.4	134.8	128.4	
Franklin Co.	153	161	164	146	124	271.2	285.4	291.1	259.1	220.0	
Galax (city) Co.	17	22	22	27	28	243.4	318.5	312.7	384.9	399.2	
Giles Co.	33	49	30	35	47	192.7	289.5	177.3	208.1	279.5	
Grayson Co.	35	18	18	31	35	228.3	118.6	118.7	205.4	231.9	
Henry Co.	194	237	191	179	186	361.0	447.4	363.0	343.7	357.1	
Lee Co.	31	25	27	42	27	123.3	98.1	107.2	168.3	108.2	
Lynchburg (city) Co.	397	435	600	504	506	518.9	564.1	769.1	637.6	640.1	
Martinsville (city) Co.	114	114	94	91	97	840.8	830.1	683.4	663.7	707.5	
Montgomery Co.	208	261	291	268	311	220.5	274.2	302.5	275.6	319.8	
Norton (city) Co.	9	17	18	12	11	222.0	417.9	448.1	297.7	272.9	
Patrick Co.	20	34	24	20	15	108.8	184.3	130.7	109.5	82.1	
Pittsylvania Co.	226	214	205	198	186	359.6	340.7	328.4	317.4	298.2	
Pulaski Co.	92	76	59	81	79	265.8	218.8	171.0	236.0	230.2	
Radford (city) Co.	110	101	133	171	147	670.2	605.3	774.0	969.1	833.0	
Roanoke (city) Co.	969	650	662	617	745	1,001.9	666.9	672.3	620.5	749.3	
Roanoke Co.	226	183	191	234	192	243.7	197.0	203.2	249.5	204.7	
Russell Co.	30	42	28	29	34	104.4	147.7	99.1	103.5	121.3	
Salem (city) Co.	81	73	74	57	61	324.5	292.4	292.5	223.7	239.4	
Scott Co.	25	26	34	32	56	108.1	114.1	150.2	143.0	250.2	
Smyth Co.	58	57	44	61	73	181.1	179.7	139.0	193.3	231.3	
Tazewell Co.	58	67	49	62	57	129.7	151.4	111.1	142.7	131.2	
Washington Co.	100	76	69	69	102	182.4	137.7	125.7	126.1	186.4	
Wise Co.	101	143	87	130	89	243.0	349.5	214.3	325.5	222.9	
Wythe Co.	75	62	57	82	60	256.8	212.0	194.2	281.6	206.0	
VIRGINIA TOTAL	34,814	34,559	33,757	35,182	36,157	431.1	422.9	409.4	423.4	435.4	

All data reported to the Virginia Department of Health as of June 01, 2016. Rates for annual case counts less than 12 are considered unstable and should be interpreted with caution. Rates per 100,000 population.

VIRGINIA STD SURVEILLANCE REPORT

Table 5CT. Chlamydia Diagnoses by Health District

Year of diagnosis:	Diagnosed Cases of Chlamydia										5 Year Trend	% Change in 2015*
	2011	2012	2013	2014	2015	2011	2012	2013	2014	2015		
	No.	No.	No.	No.	No.	Rate	Rate	Rate	Rate	Rate		
Alexandria	552	472	558	605	655	382.5	322.6	374.8	401.8	435.0		17.4%
Alleghany	416	374	360	413	365	233.9	209.8	201.1	230.4	203.7		-6.9%
Arlington	508	554	593	746	862	235.2	250.6	263.7	328.8	379.9		40.9%
Central Shenandoah	725	766	793	795	929	251.6	264.1	271.9	270.9	316.6		19.6%
Central Virginia	824	877	1,043	963	976	324.2	343.5	406.7	373.5	378.5		4.6%
Chesapeake	1,318	1,298	1,211	1,260	1,199	585.6	568.3	525.2	539.9	513.8		-7.4%
Chesterfield	1,384	1,372	1,345	1,413	1,507	378.3	371.4	360.0	373.1	398.0		7.4%
Chickahominy	328	326	322	402	409	221.2	219.8	215.3	266.4	271.0		17.5%
Crater	1,604	1,281	1,342	1,387	1,449	1,025.7	822.9	860.8	890.3	930.1		3.4%
Cumberland Plateau	128	168	103	134	132	113.5	149.6	92.4	121.9	120.1		0.6%
Eastern Shore	340	367	238	327	312	743.8	805.4	525.7	724.4	691.2		-1.2%
Fairfax	1,801	2,170	2,265	2,366	2,738	158.5	187.8	193.9	201.3	232.9		25.6%
Hampton	1,456	1,331	1,278	1,395	1,236	1,067.4	972.7	934.9	1,019.1	903.0		-9.6%
Henrico	1,376	1,419	1,547	1,613	1,648	443.2	450.6	485.5	501.0	511.9		8.9%
Lenowisco	166	211	166	216	183	176.8	226.3	179.6	236.6	200.4		-2.1%
Lord Fairfax	576	785	689	625	634	256.6	347.2	302.1	271.5	275.4		-6.4%
Loudoun	442	533	544	597	725	135.8	158.2	155.6	164.4	199.7		30.1%
Mount Rogers	412	355	297	408	423	213.6	184.4	154.6	213.7	221.5		15.6%
New River	471	517	532	576	604	264.8	288.9	295.0	317.2	332.6		14.1%
Norfolk	3,108	2,878	3,124	2,837	2,638	1,281.0	1,171.0	1,269.2	1,155.9	1,074.9		-11.8%
Peninsula	2,335	2,237	2,008	2,259	2,220	686.0	652.0	580.2	648.0	636.8		-0.7%
Piedmont	528	444	434	447	500	504.7	427.9	420.8	434.2	485.7		8.7%
Pittsylvania/ Danville	683	604	605	628	573	646.2	570.9	574.4	599.1	546.6		-8.5%
Portsmouth	1,112	1,087	1,031	1,049	1,039	1,162.2	1,126.8	1,071.7	1,092.7	1,082.2		-2.8%
Prince William	1,292	1,565	1,586	1,701	1,895	272.8	321.6	319.5	337.9	376.5		20.3%
Rappahannock	1,168	1,191	1,080	1,137	1,170	348.7	349.5	311.7	322.4	331.7		-0.4%
Rappahannock/ Rapidan	369	381	404	465	454	219.5	225.0	236.1	268.9	262.5		10.6%
Richmond City	2,773	2,728	2,578	2,792	2,822	1,349.2	1,297.1	1,204.0	1,281.6	1,295.4		1.0%
Roanoke City	969	650	663	617	745	1,001.9	666.9	673.3	620.5	749.3		1.2%
Southside	437	373	426	386	410	508.8	440.9	508.4	465.7	494.6		2.8%
Thomas Jefferson	726	742	724	594	685	306.0	310.2	300.6	243.0	280.3		-3.3%
Three Rivers	533	524	392	450	457	376.8	371.6	278.3	319.6	324.5		-3.6%
Virginia Beach	2,527	2,518	2,239	2,336	2,330	570.8	563.3	499.2	518.0	516.7		-3.9%
West Piedmont	481	546	473	436	422	338.5	385.7	335.3	310.5	300.5		-12.2%
Western Tidewater	1,038	971	825	875	906	704.8	658.2	556.9	585.7	606.4		-3.2%
VIRGINIA TOTAL	34,906	34,615	33,818	35,250	36,252	431.1	422.9	409.4	423.4	435.4		3.3%

All data reported to the Virginia Department of Health as of June 01, 2016 . Rates for annual case counts less than 12 are considered unstable and should be interpreted with caution. Rates per 100,000 population.

*Percent change calculated comparing 2015 rate versus 2011-2014 average annual rate.

VIRGINIA STD SURVEILLANCE REPORT

Table 6CT. Chlamydia Diagnoses by Health District Sorted by Rate

Year of diagnosis:	Diagnosed Cases of Chlamydia										5 Year Trend	% Change in 2015*
	2011	2012	2013	2014	2015	2011	2012	2013	2014	2015		
	No.	No.	No.	No.	No.	Rate	Rate	Rate	Rate	Rate		
Richmond City	2,773	2,728	2,578	2,792	2,822	1,349.2	1,297.1	1,204.0	1,281.6	1,295.4		1.0%
Portsmouth	1,112	1,087	1,031	1,049	1,039	1,162.2	1,126.8	1,071.7	1,092.7	1,082.2		-2.8%
Norfolk	3,108	2,878	3,124	2,837	2,638	1,281.0	1,171.0	1,269.2	1,155.9	1,074.9		-11.8%
Crater	1,604	1,281	1,342	1,387	1,449	1,025.7	822.9	860.8	890.3	930.1		3.4%
Hampton	1,456	1,331	1,278	1,395	1,236	1,067.4	972.7	934.9	1,019.1	903.0		-9.6%
Roanoke City	969	650	663	617	745	1,001.9	666.9	673.3	620.5	749.3		1.2%
Eastern Shore	340	367	238	327	312	743.8	805.4	525.7	724.4	691.2		-1.2%
Peninsula	2,335	2,237	2,008	2,259	2,220	686.0	652.0	580.2	648.0	636.8		-0.7%
Western Tidewater	1,038	971	825	875	906	704.8	658.2	556.9	585.7	606.4		-3.2%
Pittsylvania/ Danville	683	604	605	628	573	646.2	570.9	574.4	599.1	546.6		-8.5%
Virginia Beach	2,527	2,518	2,239	2,336	2,330	570.8	563.3	499.2	518.0	516.7		-3.9%
Chesapeake	1,318	1,298	1,211	1,260	1,199	585.6	568.3	525.2	539.9	513.8		-7.4%
Henrico	1,376	1,419	1,547	1,613	1,648	443.2	450.6	485.5	501.0	511.9		8.9%
Southside	437	373	426	386	410	508.8	440.9	508.4	465.7	494.6		2.8%
Piedmont	528	444	434	447	500	504.7	427.9	420.8	434.2	485.7		8.7%
VIRGINIA TOTAL	34,906	34,615	33,818	35,250	36,252	431.1	422.9	409.4	423.4	435.4		3.3%
Alexandria	552	472	558	605	655	382.5	322.6	374.8	401.8	435.0		17.4%
Chesterfield	1,384	1,372	1,345	1,413	1,507	378.3	371.4	360.0	373.1	398.0		7.4%
Arlington	508	554	593	746	862	235.2	250.6	263.7	328.8	379.9		40.9%
Central Virginia	824	877	1,043	963	976	324.2	343.5	406.7	373.5	378.5		4.6%
Prince William	1,292	1,565	1,586	1,701	1,895	272.8	321.6	319.5	337.9	376.5		20.3%
New River	471	517	532	576	604	264.8	288.9	295.0	317.2	332.6		14.1%
Rappahannock	1,168	1,191	1,080	1,137	1,170	348.7	349.5	311.7	322.4	331.7		-0.4%
Three Rivers	533	524	392	450	457	376.8	371.6	278.3	319.6	324.5		-3.6%
Central Shenandoah	725	766	793	795	929	251.6	264.1	271.9	270.9	316.6		19.6%
West Piedmont	481	546	473	436	422	338.5	385.7	335.3	310.5	300.5		-12.2%
Thomas Jefferson	726	742	724	594	685	306.0	310.2	300.6	243.0	280.3		-3.3%
Lord Fairfax	576	785	689	625	634	256.6	347.2	302.1	271.5	275.4		-6.4%
Chickahominy	328	326	322	402	409	221.2	219.8	215.3	266.4	271.0		17.5%
Rappahannock/ Rapidan	369	381	404	465	454	219.5	225.0	236.1	268.9	262.5		10.6%
Fairfax	1,801	2,170	2,265	2,366	2,738	158.5	187.8	193.9	201.3	232.9		25.6%
Mount Rogers	412	355	297	408	423	213.6	184.4	154.6	213.7	221.5		15.6%
Alleghany	416	374	360	413	365	233.9	209.8	201.1	230.4	203.7		-6.9%
Lenowisco	166	211	166	216	183	176.8	226.3	179.6	236.6	200.4		-2.1%
Loudoun	442	533	544	597	725	135.8	158.2	155.6	164.4	199.7		30.1%
Cumberland Plateau	128	168	103	134	132	113.5	149.6	92.4	121.9	120.1		0.6%

All data reported to the Virginia Department of Health as of June 01, 2016 . Rates for annual case counts less than 12 are considered unstable and should be interpreted with caution. Rates per 100,000 population.

*Percent change calculated comparing 2015 rate versus 2011-2014 average annual rate.