

Shared Plan of Care for Children with Hearing Loss



Early Hearing Detection
& Intervention Program

VDHLiveWell.com/hearing



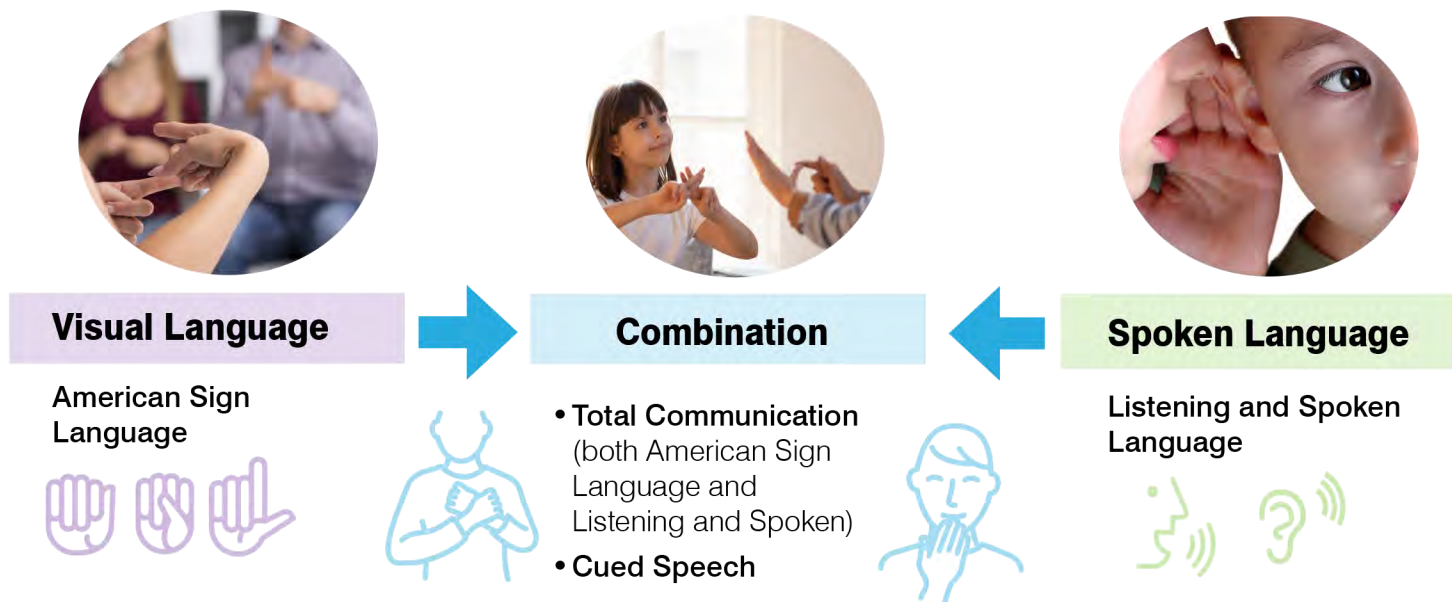
A group of parents and professionals worked together to design this Shared Plan of Care for your child who has been diagnosed with hearing loss. This plan should serve as a guide following diagnosis. The purpose is to provide the next steps in your child's hearing health care. The great news is that there are plenty of professionals and parents ready to support you.

Tips to get you started after a hearing loss diagnosis:

- It can be difficult to remember questions during your child's appointment. It may be beneficial to write your questions beforehand.
- Early intervention is key to your child developing communication, language and literacy skills. Contact your local early intervention provider to understand more about the services they provide.
- Research communication options for your child. Choose an option that works best for your family.
- Discuss with your child's primary care provider (PCP) recommendations and referrals based on your child's hearing loss.
- Get connected with family organizations for support.
- Check with your insurance company about coverage relating to hearing loss.
- If you need assistance with resources or information, contact the Virginia Early Hearing Detection and Intervention program.

Choose a Communication Plan

You should receive unbiased information on communication options.



A Shared Plan of Care for working with a professional:

Primary Care Provider (PCP):

a healthcare professional who practices general medicine, including pediatricians. PCP's are the first stop for medical care. PCP's can be a medical doctor, nurse practitioner, and/or a physician assistant.

Primary Care Provider should:

- ☐ Discuss your child's hearing loss and next steps
- ☐ Discuss referrals your child may need:
 - o Ophthalmologist (eye doctor)
 - o Cardiolgologist (heart doctor)
 - o Neurologist (Nerve, brain doctor)
 - o Infectious disease doctor
 - o Genetics

Audiologist:

a professional trained to diagnose, manage and treat hearing or balance problems.

Audiologist should:

- ☐ Refer your child for a repeat Auditory Brainstem Response (ABR) test if needed to determine their hearing sensitivity
- ☐ Explain the child's hearing loss
- ☐ Discuss communication options
- ☐ Refer your child to an Ear, Nose and Throat specialist (Otolaryngologist)
- ☐ Provide an understanding of Early Intervention services
- ☐ Explain amplification options

Ear, Nose and Throat (Otolaryngologist):

a medical specialist who is focused on the ears, nose, and throat. These specialists are trained in both medicine and surgery. Also known as an ENT.

Ear, Nose and Throat Specialist should:

- ☐ Examine your child's ear
- ☐ Discuss hearing loss and treatment options
- ☐ Provide medical clearance for hearing aids – if needed
- ☐ Refer for further tests – if needed

Early Intervention (EI):

a program that provides services and support to families to help children develop skills and reach their highest potential.

Early Intervention (EI) should:

- ☐ Explain the importance of early intervention services
- ☐ Assign a service coordinator to work with your child
- ☐ Schedule a visit to complete the initial assessment
- ☐ Develop an Individualized Family Service Plan (IFSP) –plan to identify individualized supports and services that will enhance your child's development
- ☐ Discuss communication options for children diagnosed with hearing loss
- ☐ Discuss what to expect at your medical appointments related to hearing loss

Family to Family Support:

a member of a family who has experienced caring for a child with hearing loss. They provide support and help identify additional resources.

Family to Family may:

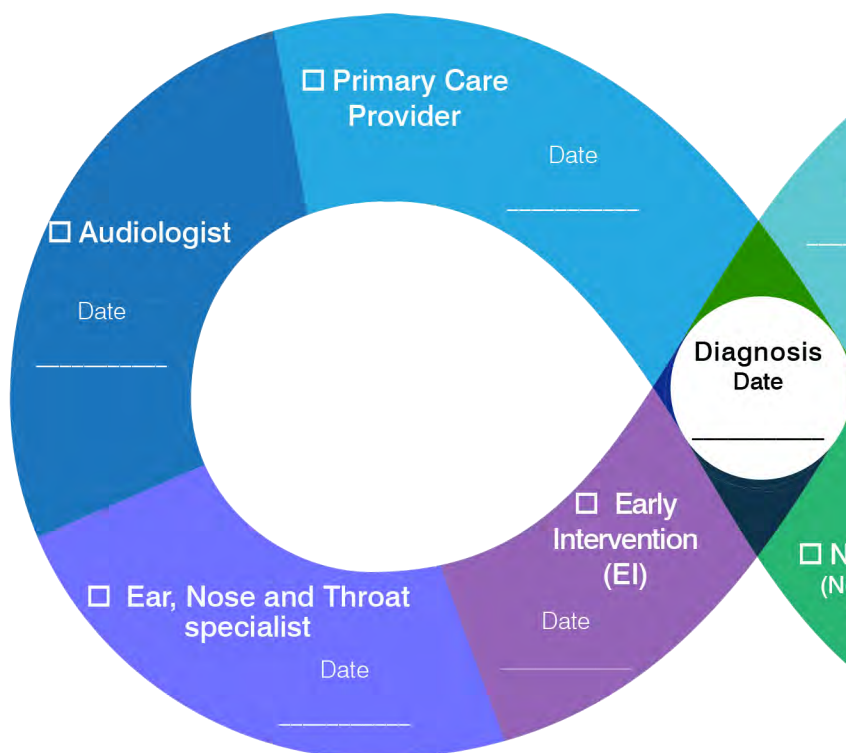
- ☐ Provide support in understanding your child's hearing loss
- ☐ Share additional tips for managing your child's hearing loss
- ☐ Discuss available resources for your child
- ☐ Discuss importance of Early Intervention services
- ☐ Discuss communication options

Shared Plan of Care for Children with Hearing Loss

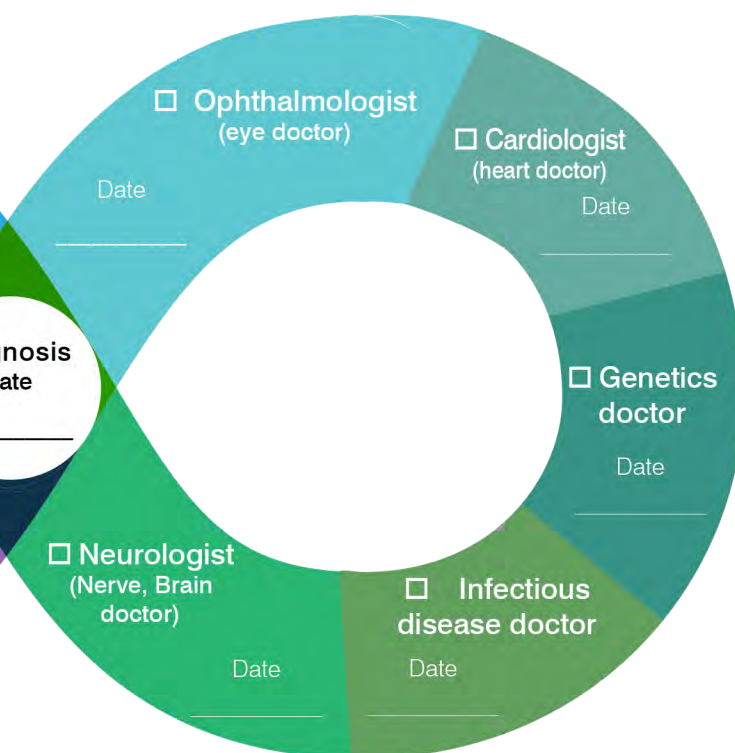
It is important to schedule your child's appointment with their PCP and other specialists as needed.

Use the guide below to keep track of all your child's recommended appointment dates after diagnosis.

Repeating Appointments



Recommended Appointments



Diagnosis
Date



For More Information:

**The Virginia Early Hearing Detection
and Intervention (VA EHD I)
804-864-7709**