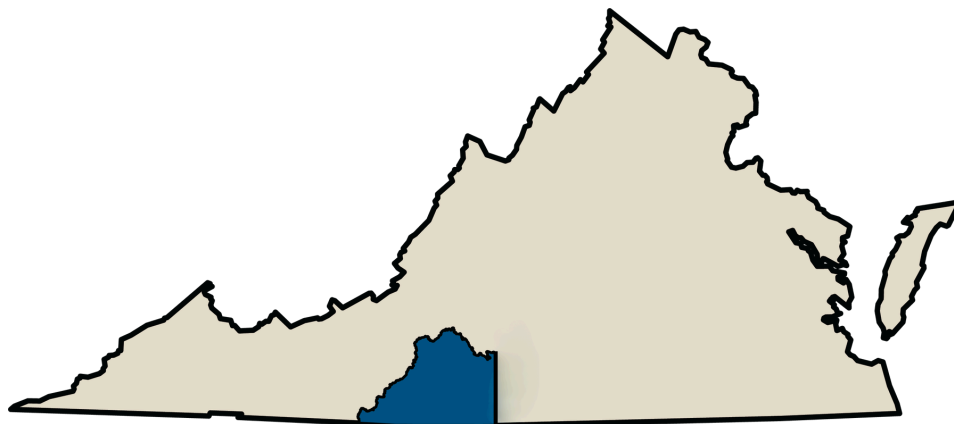


2025 Healthy Patrick County Health Implementation Plan



Be a part of the solution!

Healthy Patrick County

**Meetings 1-2 p.m. on the first Thursday of Every Month at the
Stuart campus of Patrick and Henry Community College**

Welcome!

After 18 months of review and contributions by the Healthy Patrick County teams, the implementation plan is ready for release. As we serve the health needs of people of rural communities, we view this as a fluid process, informed by the work of the various partners and ongoing community input.

Using citizen surveys and secondary data sources, the insights from the community health assessment were narrowed during workgroup meetings to three main priority areas. These priority areas are the foundation for this phase of this ongoing process – the Community Health Improvement/Implementation Plan. We hope to further local health access by addressing:

- Access to healthcare
- Identify and educate the community about existing resources.
- Address social determinants of health by extending partner relationships.

No single organization or program can solve a community health issue alone. However, through coordination and communication, we can each play a part in effecting change that collectively helps resolve issues. This implementation report is a starting point for work focusing on the priority areas over the next three years.

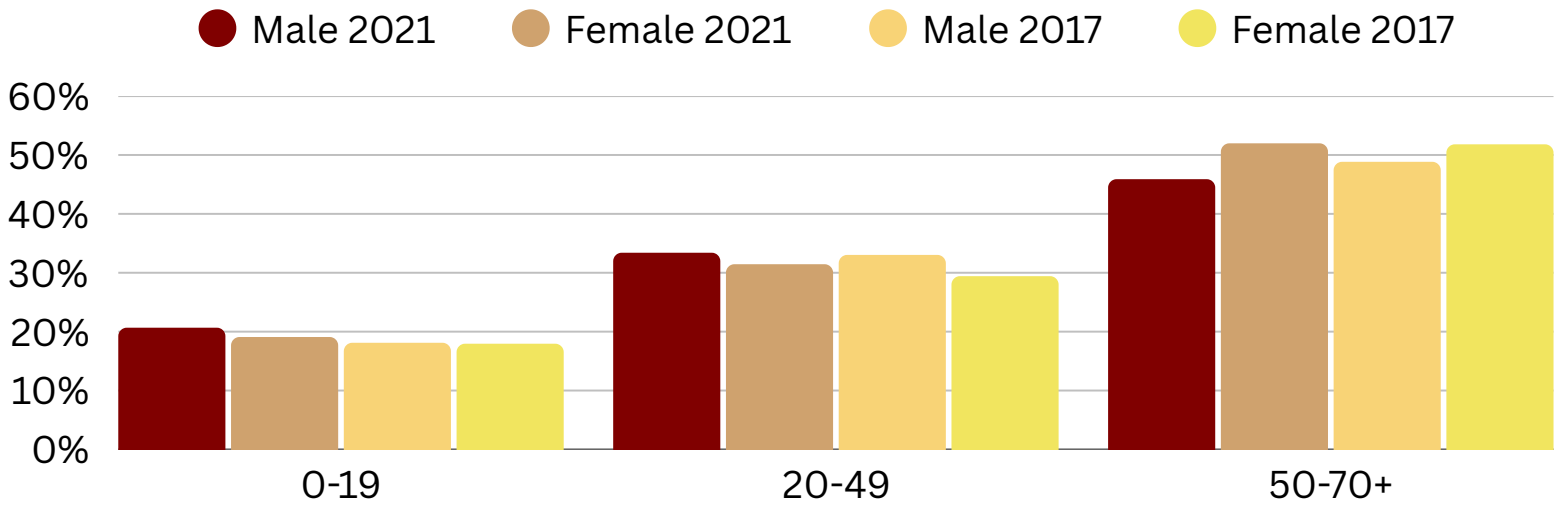
This report, the improvement/implementation plan, is a living document. It will continue to be revisited, revised, and built upon as needed to assure progress in the priority areas. Everyone involved in this process hopes interested policymakers, community members, and partners will identify with the report findings and support the strategies and direction proposed for our community. Each of us has a role in improving health and the quality of life in Patrick County.



Inquiries regarding this report may be directed to: Pamela Chitwood, Population Health Manager, West Piedmont Health District, Virginia Department of Health Pamela.Chitwood@vdh.virginia.gov.

Every person in Patrick County has fair and equitable opportunities to achieve optimal health.

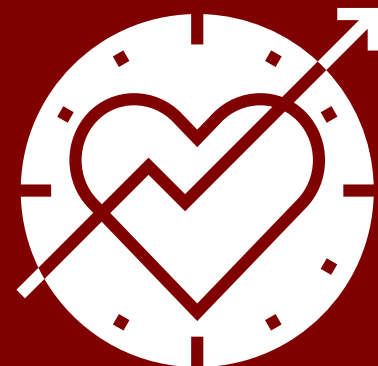
An increased median age indicates an aging population.



We can achieve the best overall maternal health outcomes by maximizing existing resources.

Patrick's Life Expectancy is 3 years less than the state average.

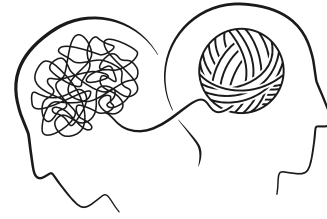
Teen Pregnancy	
Report Area	Teen Pregnancy Rate (per 1,000 females 15-19)
Patrick County	26
Virginia	18



Our goal is to improve the use of data, foster collaboration, and maximize the use of resources to achieve the best health conditions.

Death by Suicide

Report Area	Crude Death Rate (Per 100,000 Population)
Patrick County	33
Virginia	13.9
United States	14.5



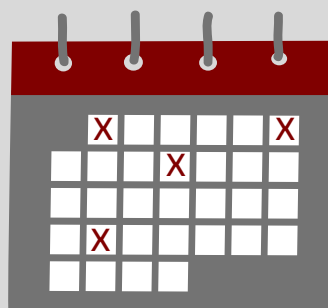
There are 1,460 people to 1 provider versus Virginia's 380 people per provider for mental health care for the community.

Inadequate access to prenatal care can increase the risk of infant mortality.



In Patrick County, 10% of babies had low birth weights (under 5 pounds, 8 ounces).

The average person in Patrick County has 4.3 poor mental health days each month

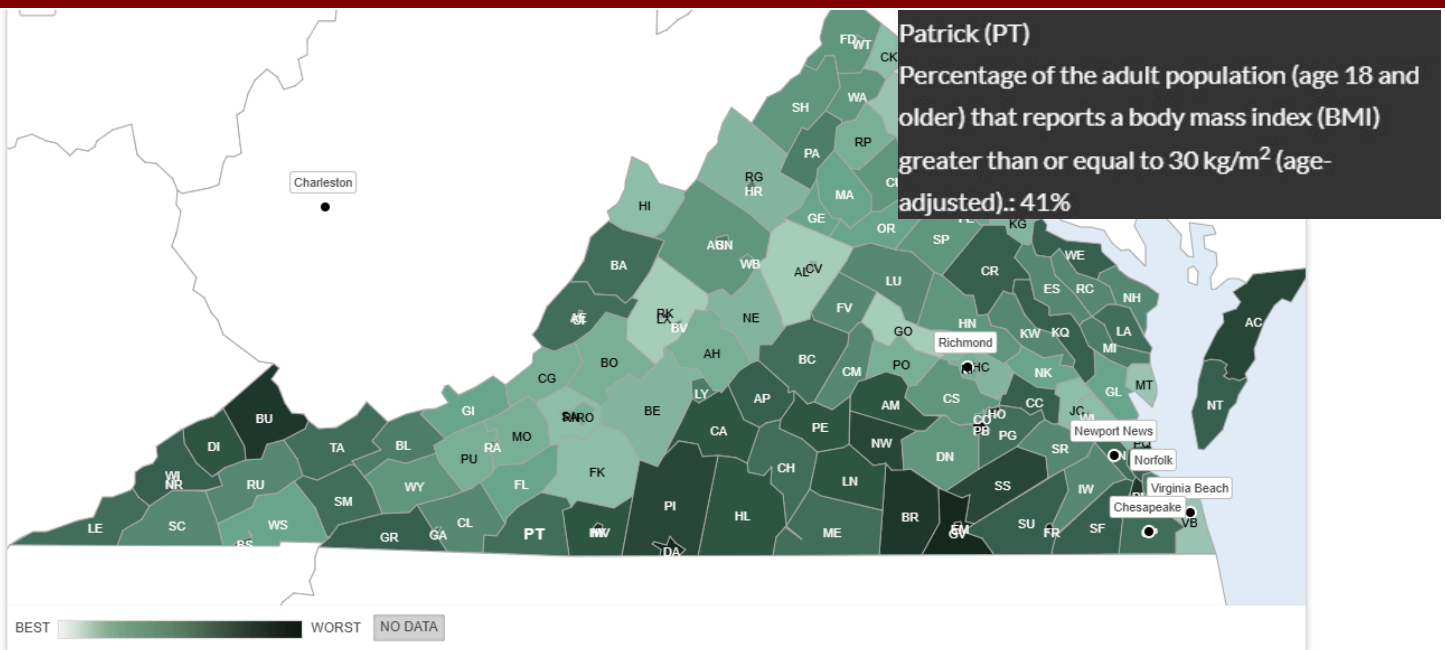


Percentage of Adults Age 18+ Ever Diagnosed with Coronary Heart Disease

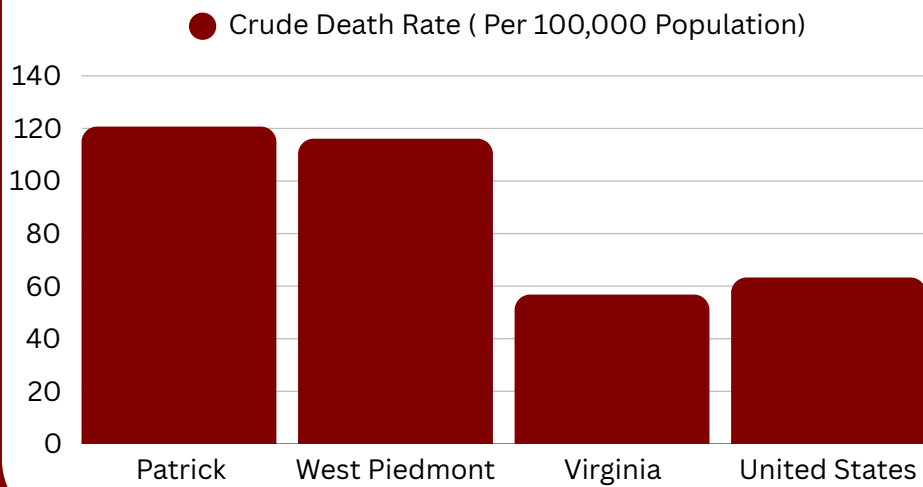


- Patrick County, VA (10.7%)
- Virginia (6.3%)
- United States (6.8%)

By strengthening partnerships and collaborations, Partick County can better tackle the root causes of health disparities and improve overall well-being for its residents.



Unintentional Injury Death Crude Death Rate



75%
of all overdose deaths were attributed to fentanyl

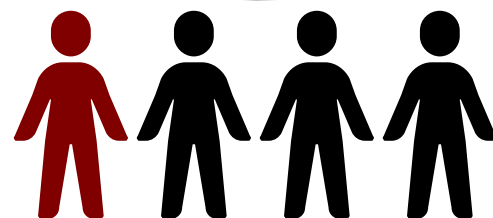
In Patrick County, Virginia, there were 51 drug overdose deaths per 100,000 people.

Patrick County had 151 deaths due to injury, such as homicides, suicides, motor vehicle crashes, and poisonings, per 100,000 people.

Population Below 200% Federal Poverty Level

Report Area	Population with Income Below 200% Poverty Level
Patrick County	33.01%
Virginia	23.35%
United States	28.46%

9.47% are children, under the age of 18

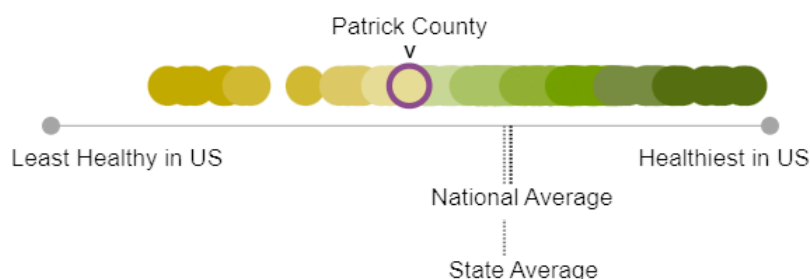


Prioritizing our well-being is key. By making healthy choices, we can reduce our risk of illness and live our best lives.

Juvenile arrest tops at 34 per year, which is 22% more than the Virginia totals.



Patrick County Population Health and Well-being - 2025



Patrick County is faring worse than the average county in Virginia for Population Health and Well-being, and worse than the average county in the nation.