

WEEKLY CASE REPORT FOR EXTERNAL USE

MON FEB 1 - SUN FEB 7, 2021

CONTENTS

| | |
|---|-----------|
| KEY TAKEAWAYS | 3 |
| 1.0 COVID-19 SNAP SHOT | 4 |
| 1.1 CONFIRMED CASES, HOSPITALIZATIONS, FATALITIES, AND PROBABLE CASES BY COUNTY | 4 |
| 1.2 CURRENT COVID-19 HOSPITALIZATIONS IN THE RICHMOND CATCHMENT AREA ON FEB 8, 2021 | 5 |
| 2.0 COVID-19 TESTING ENCOUNTERS AND POSITIVITY | 5 |
| 2.1 TESTING SUMMARY | 5 |
| 3.0 COVID-19 CASES | 6 |
| 3.1 SUMMARY OF CASES | 6 |
| 3.2 CASE REPORTS TRENDS BY DATE (SOURCE-VDH WEBSITE) | 6 |
| 3.3 CASES BY SEX BY COUNTY | 8 |
| 3.4 CASES BY AGE GROUP BY COUNTY | 9 |
| 3.5 CASES AND POPULATION PROPORTIONS BY RACE AND ETHNICITY BY COUNTY | 10 |
| 4.0 COVID-19 HOSPITALIZATIONS | 11 |
| 4.1 SUMMARY OF HOSPITALIZATIONS | 11 |
| 4.2 HOSPITALIZATIONS (CONFIRMED AND PENDING) BY DAY IN THE RICHMOND CATCHMENT AREA AS OF FEB 8, 2021 | 12 |
| 4.3 ICU HOSPITALIZATIONS (CONFIRMED AND PENDING) BY DAY IN THE RICHMOND CATCHMENT AREA AS OF FEB 8, 2021 | 13 |
| 4.4 VENTILATOR UTILIZATIONS (PATIENTS ON VENTILATORS) BY DAY IN THE RICHMOND CATCHMENT AREA AS OF FEB 8, 2021 | 14 |
| 5.0 COVID-19 FATALITIES | 14 |
| 5.1 SUMMARY OF FATALITIES | 14 |
| 6.0 VACCINATION | 14 |
| 6.1 VACCINE SUMMARY | 14 |
| 6.2 VACCINATIONS BY LOCALITY AS OF FEB 8, 2021 - SOURCE: VDH.VIRGINIA.GOV | 15 |
| 6.5 WEEKLY TOTAL VACCINATIONS OVER TIME FOR RICHMOND AND HENRICO - SOURCE: INTERNAL TRACKING, VIIS | 16 |
| 6.6 VACCINE DISTRIBUTION BY ELIGIBLE POPULATION IN RICHMOND & HENRICO - SOURCE: INTERNAL TRACKING | 16 |
| 6.7 VACCINE DISTRIBUTION BY DEMOGRAPHIC SUBGROUP - SOURCE: VIIS | 17 |
| 7.0 APPENDIX | 19 |
| 7.1 CENSUS POPULATION ESTIMATES BY AGE AND RACE--RICHMOND CITY AND HENRICO COUNTY | 19 |

KEY TAKEAWAYS

- According to the [VDH Pandemic Metrics Dashboard](#), the Central Region is experiencing a high burden of cases, with a fluctuating trend and at a substantial activity level. As of February 8, the daily case incidence rate in Richmond was 38.5 cases per 100,000, a decrease from last week's rate of 47.0. Percent **positivity** for the locality is 7.9% and fluctuating. In Henrico, the daily case incidence rate is 43.5 cases per 100,000, a decrease from last week's rate of 52.6. Percent **positivity** for the locality is 9.5% and decreasing.
- **Cases** in Richmond appear to be decreasing. Compared to last week, based on VEDSS data by date cases have decreased, with a 7 day average of 39 daily new cases per 100,000 population, compared to last week's report of 47 per 100,000. In Henrico, cases also appear to be fluctuating. On Feb 8, VEDSS data showed 81 new cases per day, per 100,000, compared to 52.6 per 100,000 last week on Feb 1.
 - **Regarding subgroups**, females still bear a higher proportion of cases in both districts, both cumulatively and in the last 4 weeks. Regarding the proportion of cases by age group 20-29 year olds continue to be in the lead in both districts, both cumulatively and in the last 4 weeks. Regarding race and ethnicity, in Richmond, the highest proportion of cases is still among Black individuals, again both cumulatively and in the last 4 weeks. In Henrico in the last 4 weeks the proportion of cases for which race/ethnicity is unreported surpasses any other group (35.5%), followed by cases among White individuals (29.4%). Cumulatively, the proportion of cases is also highest among White individuals. *The proportion of cases for which race/ethnicity is unreported continues to grow in both districts with 31.9% unreported in Richmond and 35.5% in Richmond based on data from the past month.*
- VEDSS data suggest that **hospitalizations** among Richmond patients are declining overall, though hospitalizations have fluctuated since November and the data may be impacted by reporting lags. Hospitalizations among residents of Henrico also appear to be declining overall (see [VDH Dashboard](#) for additional trend data). Looking more broadly at the 11 hospitals that comprise the Richmond catchment area, data show plateaus in total hospitalizations, ICU hospitalizations. Ventilator use has fluctuated throughout the month of January. 10 out of 11 hospitals are operating at a normal clinical status. *Please note: hospitalizations by subgroup (sex, age, and race) will be reported on a monthly basis moving forward.*
- **Deaths** appear to be fluctuating in Richmond and plateauing in Henrico, after a decrease in January, though trends in the data are typically impacted by reporting lags. Additional death data is available on the [VHD Dashboard](#). *Please note: deaths by subgroup (sex, age, and race) will be reported on a monthly basis moving forward.*
- Richmond and Henrico Health Districts are currently in Phase 1B of **vaccination**. Eligible people include healthcare workers, people living and working in long-term care facilities, police, school staff (K-12), childcare workers, and people over the age of 65. As of Feb 8, 2021, 127,742 doses have been administered in the region, which includes Richmond, Henrico, Chickhominy, and Chesterfield Health Districts. The majority of vaccine recipients in both districts have been female. In Richmond the majority of vaccines have been given to people 30-39 years old. In Henrico the majority of vaccines have been given to people 50-59, closely followed by 30-39 years olds, though these numbers represent counts, rather than rates. Available data indicate that eligible White individuals have received the majority of the vaccine, but a large percentage of recipients' race/ethnicity is unreported.

1.0 COVID-19 SNAP SHOT

1.1 CONFIRMED CASES, HOSPITALIZATIONS, FATALITIES, AND PROBABLE CASES BY COUNTY

| CASE STATUS | RICHMOND CITY | HENRICO COUNTY | VIRGINIA |
|-----------------------------|---------------|----------------|----------|
| New cases this week (Feb 7) | 613 | 1019 | 23185 |
| All cases | 13465 | 19623 | 530825 |
| Confirmed cases | 11260 | 14894 | 422723 |
| Hospitalizations | 621 | 771 | 21142 |
| Deaths | 122 | 325 | 5872 |
| Probable cases | 2205 | 4729 | 108102 |
| Hospitalizations | 18 | 23 | 1025 |
| Deaths | 20 | 28 | 946 |
| Case rate per 100,000 | 5843.3 | 5931.7 | 6219 |

Weekly cases added are estimated as the difference between the cases recorded from the current and prior week

*Case Rate per 100,000=(confirmed+probable)/population count *100,000.*

Population estimates for the case rate are the most recent as of July 1, 2019 from the [U.S Census Bureau QuickFacts](#)

1.2 CURRENT COVID-19 HOSPITALIZATIONS IN THE RICHMOND CATCHMENT AREA ON FEB 8, 2021

The data included in this section comes from VHASS and it includes data from the following hospitals: VCU Health System, Retreat Doctors’, Bon Secours Community, CWJ Chippenham, CWJ Johnson Willis, VA Medical Center, Bon Secours St. Mary’s, Henrico Doctors, and Parham Doctors, Bon Secours St. Francis, and Memorial Regional Medical Center.

| | TOTAL IN USE FOR COVID-19 | CURRENTLY AVAILABLE |
|----------------------------|---------------------------|---------------------|
| Confirmed Hospitalizations | 346 | 233 |
| Pending Hospitalizations | 46 | |
| Confirmed - ICU | 96 | 43 |
| Pending - ICU | * | |
| Confirmed - Ventilators | 52 | 460 |
| Pending - Ventilators | * | |

*Counts <5 have been suppressed

Within these 11 hospitals that comprise the Richmond catchment area, there are currently 43 available adult ICU beds, and 460 available ventilators. Based on the VHASS hospital dashboard on February 8th, 2021, 10 out of the 11 hospitals are operating at normal clinical status. CJW Jonston Willis is operating at a full clinical status.**

**A clinical status of “normal” indicates that hospital clinical resources are operating within normal conditions. A clinical status of “full” indicates that hospital clinical resources are exceeded and acceptable care cannot be provided to additional patients. Diversion or Community surge response is required.

2.0 COVID-19 TESTING ENCOUNTERS AND POSITIVITY

2.1 TESTING SUMMARY

Total tests by testing modality and the associated 7-day average in percent positivity are summarized in the table below. Data are from from the [VDH public dashboard](#) on February 8, 2021.

| | RICHMOND CITY | | HENRICO COUNTY | |
|------------------------------------|---------------|------------|----------------|------------|
| | Tests | Positivity | Tests | Positivity |
| PCR* | 190,662 | 7.9% | 274,273 | 9.5% |
| Antigen | 26,788 | 9.9% | 58,643 | 9.3% |
| Total (PCR, antigen, and antibody) | 221,372 | 8.3% | 341,000 | 9.4% |

*All testing metrics included in previous reports have been based on PCR tests

3.0 COVID-19 CASES

3.1 SUMMARY OF CASES

Cases

Cases in Richmond appear to be decreasing. Compared to last week, based on VEDSS data by date cases have decreased, with a 7 day average of 39 daily new cases per 100,000 population, compared to last week's report of 47 per 100,000. In Henrico, cases also appear to be fluctuating. On Feb 8, VEDSS data showed 81 new cases per day, per 100,000, compared to 52.6 per 100,000 last week on Feb 1.

Case Demographics

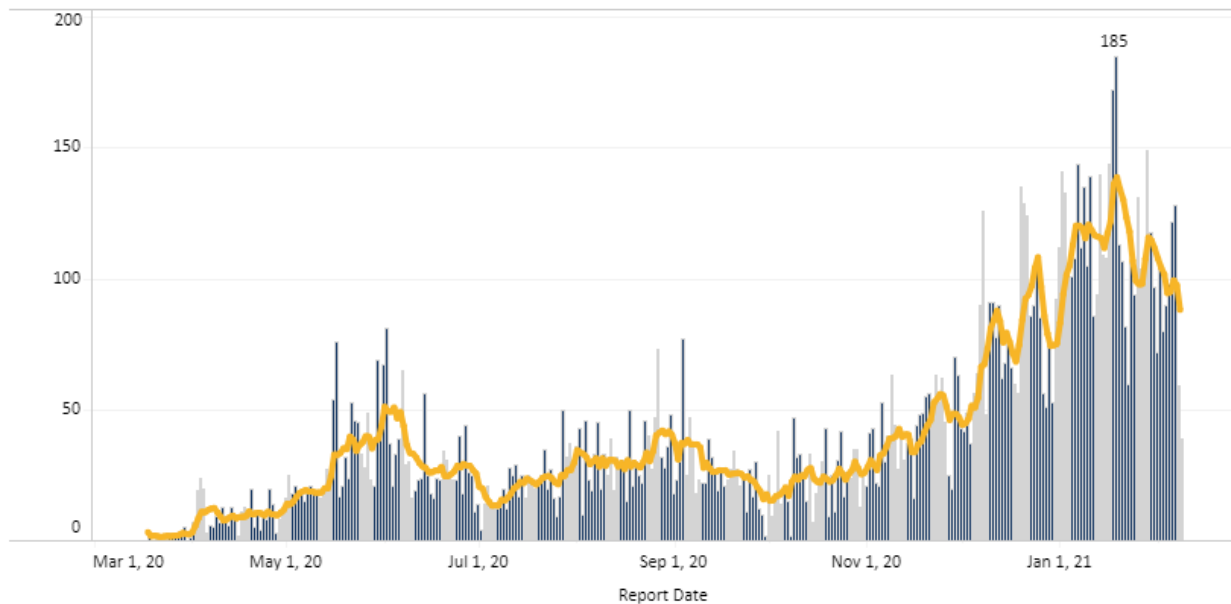
Females still bear a higher proportion of cases in both districts, both cumulatively and in the last 4 weeks. Regarding the proportion of cases by age group 20-29 year olds continue to be in the lead in both districts, both cumulatively and in the last 4 weeks. Regarding race and ethnicity, in Richmond, the highest proportion of cases is still among Black individuals, again both cumulatively and in the last 4 weeks. In Henrico in the last 4 weeks the proportion of cases for which race/ethnicity is unreported surpasses any other group (35.5%), followed by cases among White individuals (29.4%). Cumulatively, the proportion of cases is also highest among White individuals. *The proportion of cases for which race/ethnicity is unreported continues to grow in both districts with 31.9% unreported in Richmond and 35.5% in Richmond based on data from the past month.*

3.2 CASE REPORTS TRENDS BY DATE (SOURCE-VDH WEBSITE)

The report date corresponds to the date the case count was reported publicly. The report date does not have any equivalent variable in VEDSS, and cannot be directly linked to case-specific dates (e.g., event dates or lab report dates). Case counts by report date are estimated by subtracting the cumulative cases on the previous day from that of the current day. The 7-day moving average is a recurrent average of the number of cases for each 7-day data sequence.

| Number of New Cases Reported [^] | 7-Day Average Number of Daily New Cases Reported | 7-Day Average Number of New Daily Cases Reported, Rate per 100,000 Population | Total Number of New Cases per 100,000 Population within last 14 days |
|---|--|---|--|
| 39 | 88 | 38.5 | 598.4 |

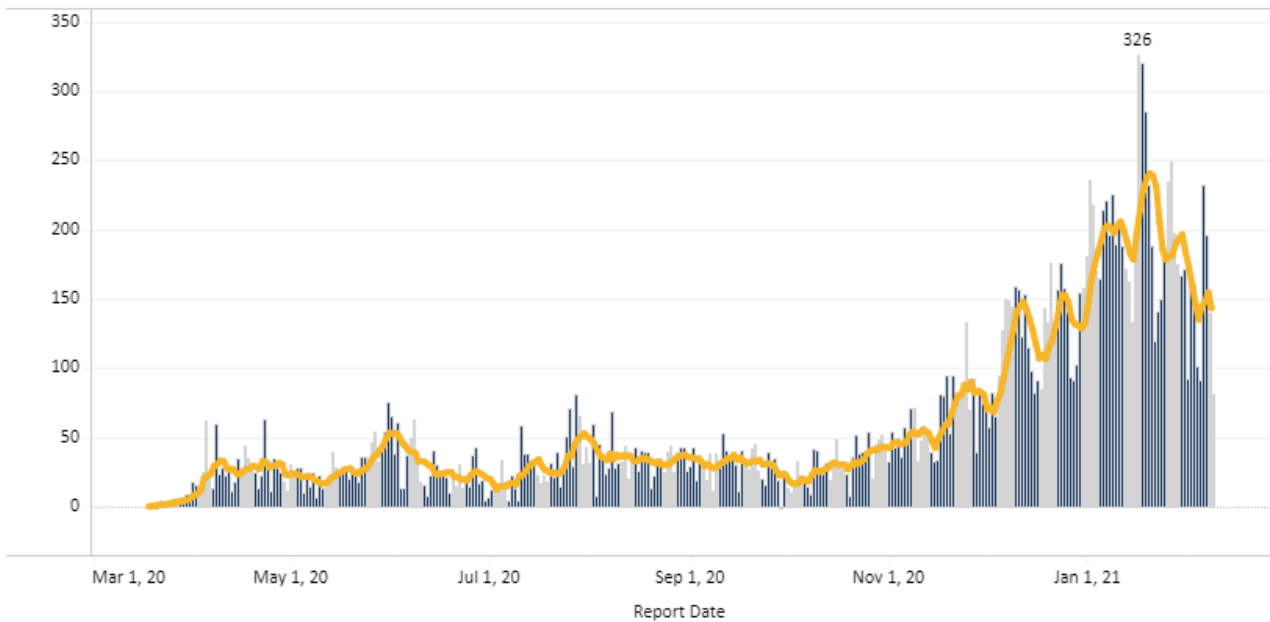
Report Date Daily Cases Counts - Richmond City



- In Richmond, the 7-day average number of daily new cases reported this week appears to be decreasing. A total of 39 new cases were reported on February 8, 2021, with a 7-day average of 38.5 new daily cases per 100,000 population, down from 105 new cases and a 7-day average of 47.0 a week ago.

| Number of New Cases Reported [^] | 7-Day Average Number of Daily New Cases Reported | 7-Day Average Number of New Daily Cases Reported, Rate per 100,000 Population | Total Number of New Cases per 100,000 Population within last 14 days |
|---|--|---|--|
| 81 | 143 | 43.5 | 673.0 |

Report Date Daily Cases Counts - Henrico

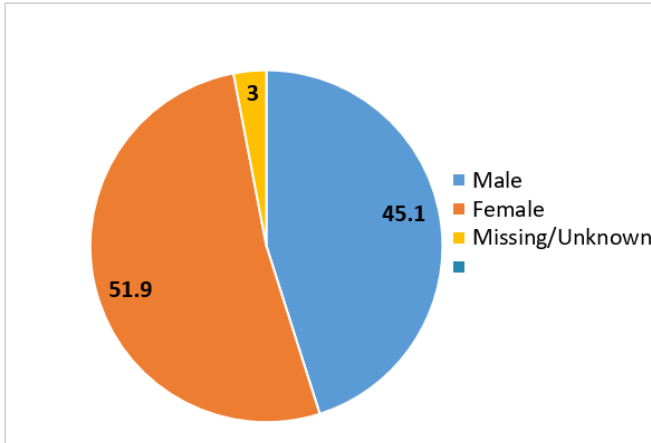


- In Henrico, new cases reported per day also appear to be decreasing. A total of 81 new cases were reported on February 8 with a 7-day average of 43.5 daily cases per 100,000 population, down from 161 new cases and a 7-day average of 52.6 a week ago.

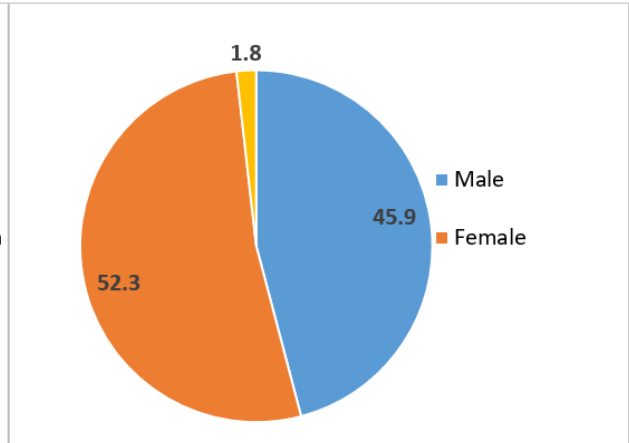
3.3 CASES BY SEX BY COUNTY

All percentages are based on overall case distribution, rather than the proportion of known cases for each measure, and therefore may not correspond directly with VDH percentages.

COVID-19 case distribution by Sex in the last 4 weeks (Jan 11 – Feb 8, 2021) – Richmond City, VA (N=2320)

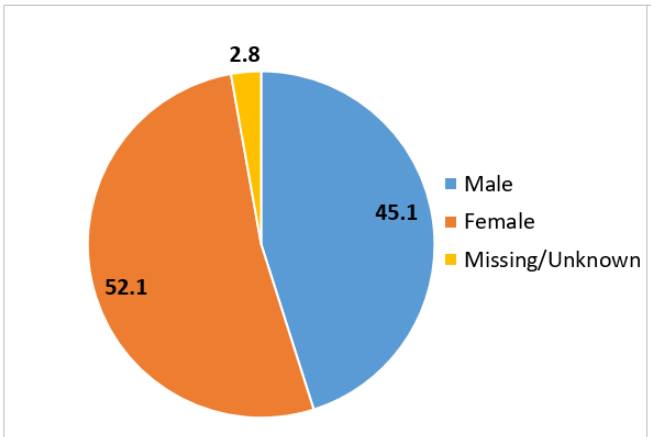


Cumulative COVID-19 case distribution by Sex as of February 8, 2021 – Richmond City, VA (N=13465)

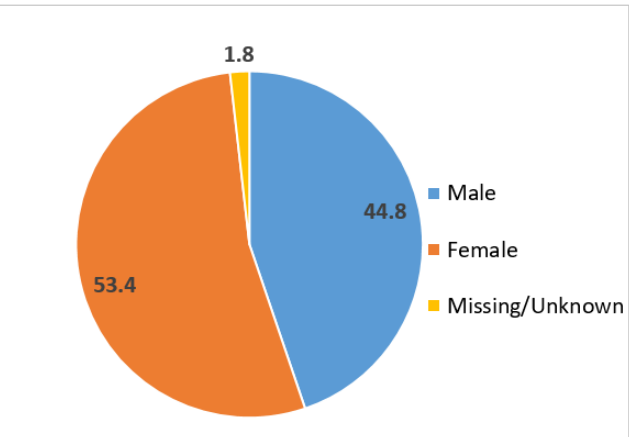


- In Richmond, females comprise a higher proportion of cases relative to males in the last 4 weeks (51.9% vs 45.1%) as well as cumulatively (52.3% vs 45.9%).

COVID-19 case distribution by Sex in the last 4 weeks (Jan 11 – Feb 8, 2021) – Henrico County, VA (N=3910)



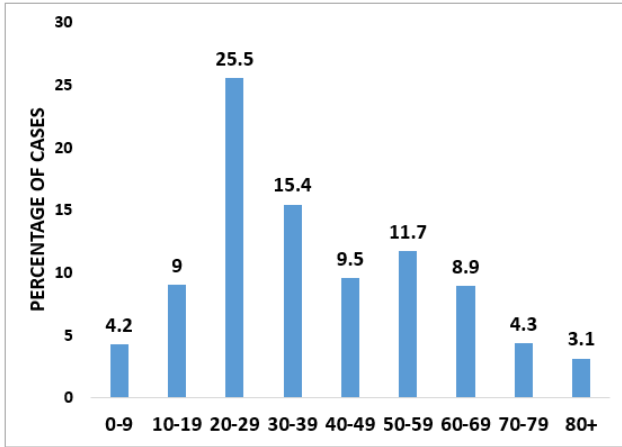
Cumulative COVID-19 case distribution by Sex as of February 8, 2021 – Henrico County, VA (N=19623)



- In Henrico, females also comprise a much higher proportion of cases relative to males in the last 4 weeks (52.1% vs 45.1%) and cumulatively (53.4% vs 44.8%).

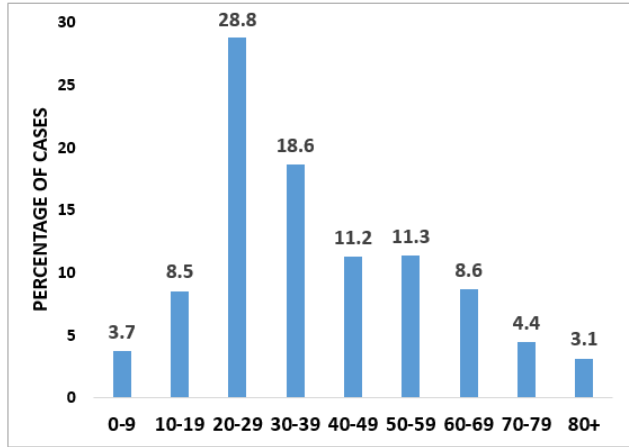
3.4 CASES BY AGE GROUP BY COUNTY

COVID-19 case distribution by Age group in the last 4 weeks (Jan 11 – Feb 8, 2021) – Richmond City, VA (N=2320)



Age is missing for 8.3% of cases

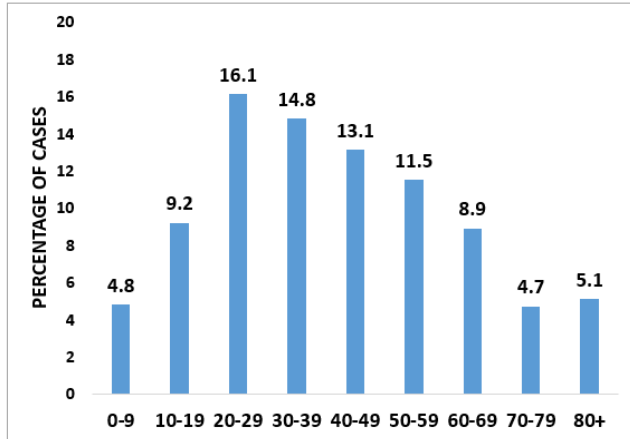
Cumulative COVID-19 case distribution by Age group as of February 8, 2021 – Richmond City, VA (N=13465)



Age is missing for 1.9% of cases

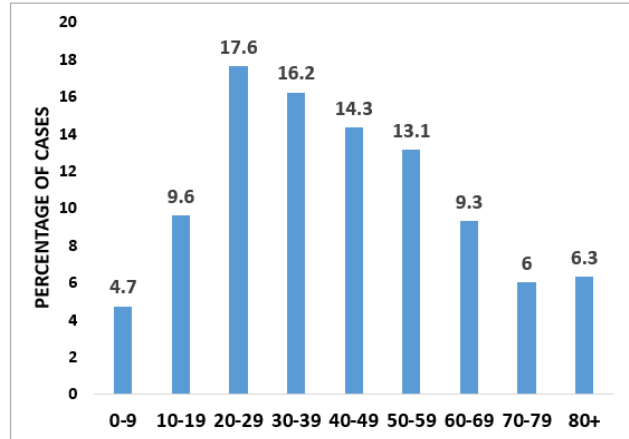
- In Richmond, individuals aged 20-29 (25.5%) still comprise the overwhelming majority of cases in the last four weeks, followed by individuals aged 30-39 years (15.4%) and 50-59 years (11.7%).

COVID-19 case distribution by Age group in the last 4 weeks (Jan 11 – Feb 8, 2021) – Henrico County, VA (N=3910)



Age is missing for 11.8% of cases

Cumulative COVID-19 case distribution by Age group as of February 8, 2021 – Henrico County, VA (N=19623)

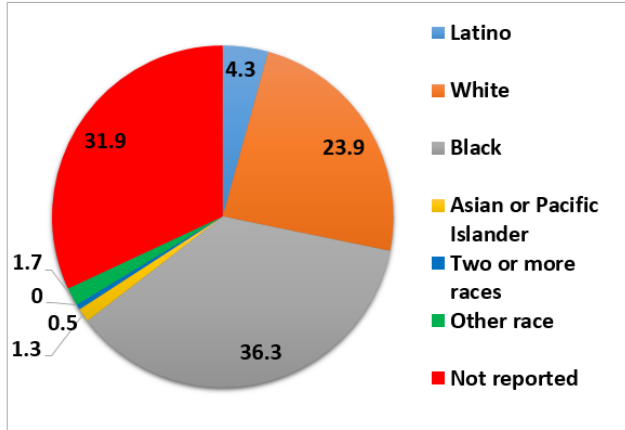


Age is missing for 2.9% of cases

- In Henrico, individuals aged 20-29 (16.1%) also comprise the majority of cases in the last four weeks but followed more closely by individuals aged 30-39 years (14.8%), 40-49 years (13.1%) and 50-59 years (11.5%), as case burdens are somewhat more evenly distributed across multiple age groups.

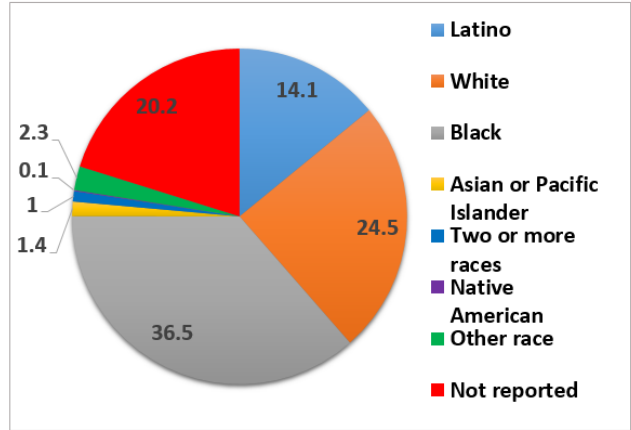
3.5 CASES AND POPULATION PROPORTIONS BY RACE AND ETHNICITY BY COUNTY

COVID-19 case distribution by Race and ethnicity in the last 4 weeks (Jan 11 – Feb 8, 2021) – Richmond City, VA (N=13465)



*Missing and Unknown Ethnicities were assumed to be of Non-Hispanic ethnicity
 *Cases among Native Americans are suppressed (counts < 5)

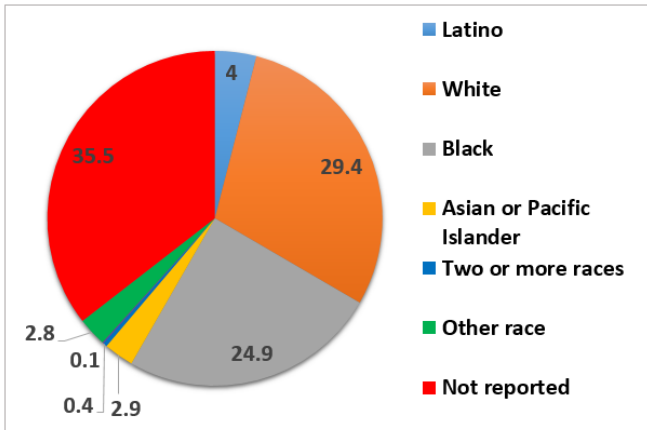
Cumulative COVID-19 case distribution by Race and ethnicity as of February 8, 2021 – Richmond City, VA (N=13465)



*Missing and Unknown Ethnicities were assumed to be of Non-Hispanic ethnicity

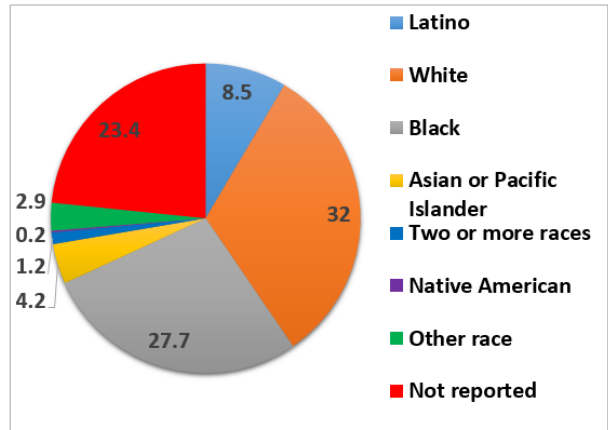
- In Richmond, the proportion of cases among Black individuals (36.3%) over the last 4 weeks constitutes the majority of cases, followed by White individuals (23.9%). The case burden for Latino individuals is much lower over the last four weeks compared to the cumulative proportion of cases, but they continue to constitute the third largest proportion of cases.

COVID-19 case distribution by Race and ethnicity in the last 4 weeks (Jan 11 – Feb 8, 2021) – Henrico County, VA (N=3910)



*Missing and Unknown Ethnicities were assumed to be of Non-Hispanic ethnicity
 *Cases among Native Americans are suppressed (counts < 5)

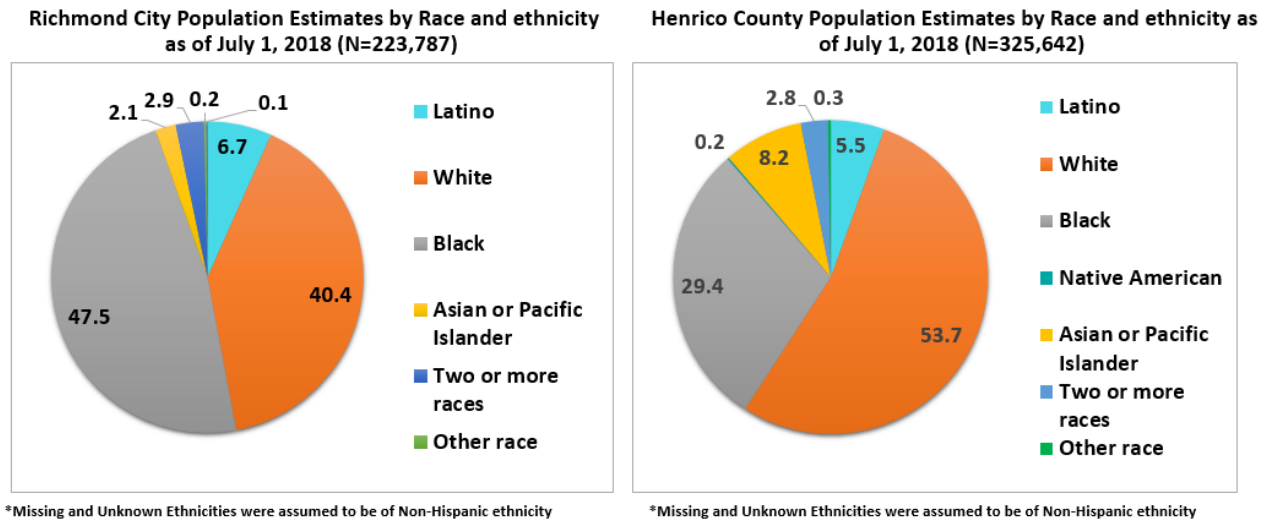
Cumulative COVID-19 case distribution by Race and ethnicity as of February 8, 2021 – Henrico County, VA (N=19623)



*Missing and Unknown Ethnicities were assumed to be of Non-Hispanic ethnicity

- In Henrico over the last 4 weeks, White individuals comprise the highest proportion of cases (29.4%), followed by Black individuals (24.9%). Latino individuals constitute a relative minority of cases over the same period and their case burden is notably lower compared to the cumulative proportion of cases.

Population estimates for the Race and Ethnicity subgroup analyses are from the [2018 ACS 5-year estimates](#)



4.0 COVID-19 HOSPITALIZATIONS

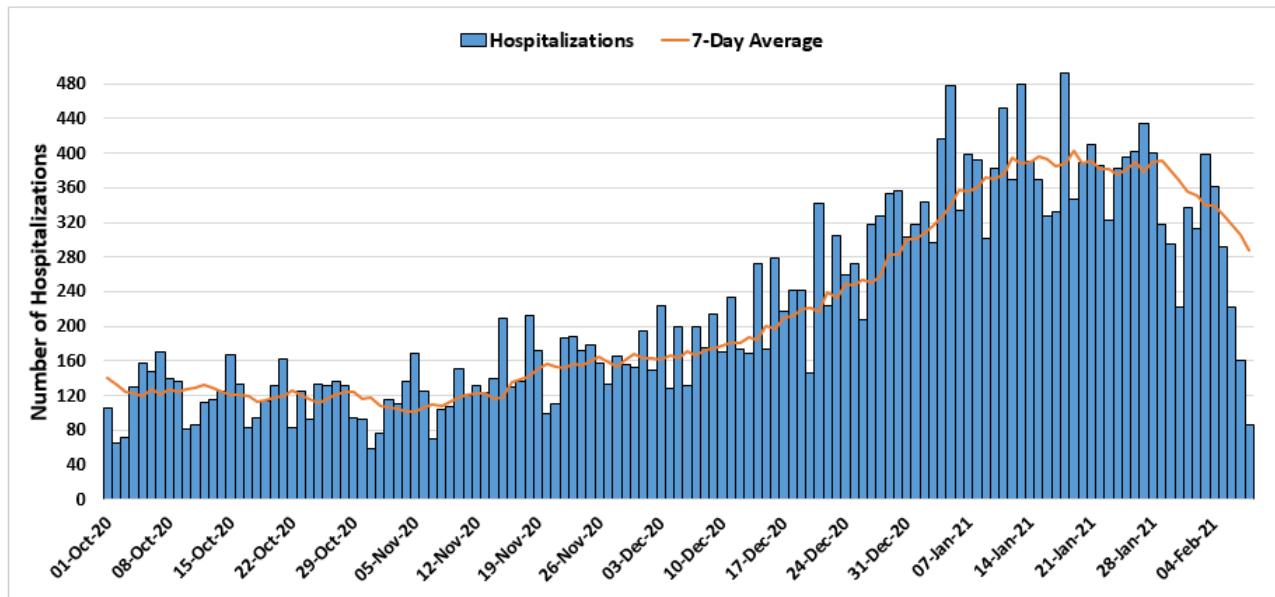
4.1 SUMMARY OF HOSPITALIZATIONS

VEDSS data suggest that hospitalizations among Richmond patients are declining overall, though hospitalizations have fluctuated since November and the data may be impacted by reporting lags. Hospitalizations among residents of Henrico also appear to be declining overall (see [VDH Dashboard](#) for additional trend data). Looking more broadly at the 11 hospitals that comprise the Richmond catchment area, data show plateaus in total hospitalizations, ICU hospitalizations. Ventilator use has fluctuated throughout the month of January. As summarized at the beginning of this report, 10 out of 11 hospitals are operating at a normal clinical status.

Please note: hospitalizations by subgroup (sex, age, and race) will be reported on a monthly basis moving forward.

4.2 HOSPITALIZATIONS (CONFIRMED AND PENDING) BY DAY IN THE RICHMOND CATCHMENT AREA AS OF FEB 8, 2021

Total Daily COVID-19 Hospitalizations, October 1st, 2020 – February 8th, 2021
Richmond Catchment Area (28797 of 57962)

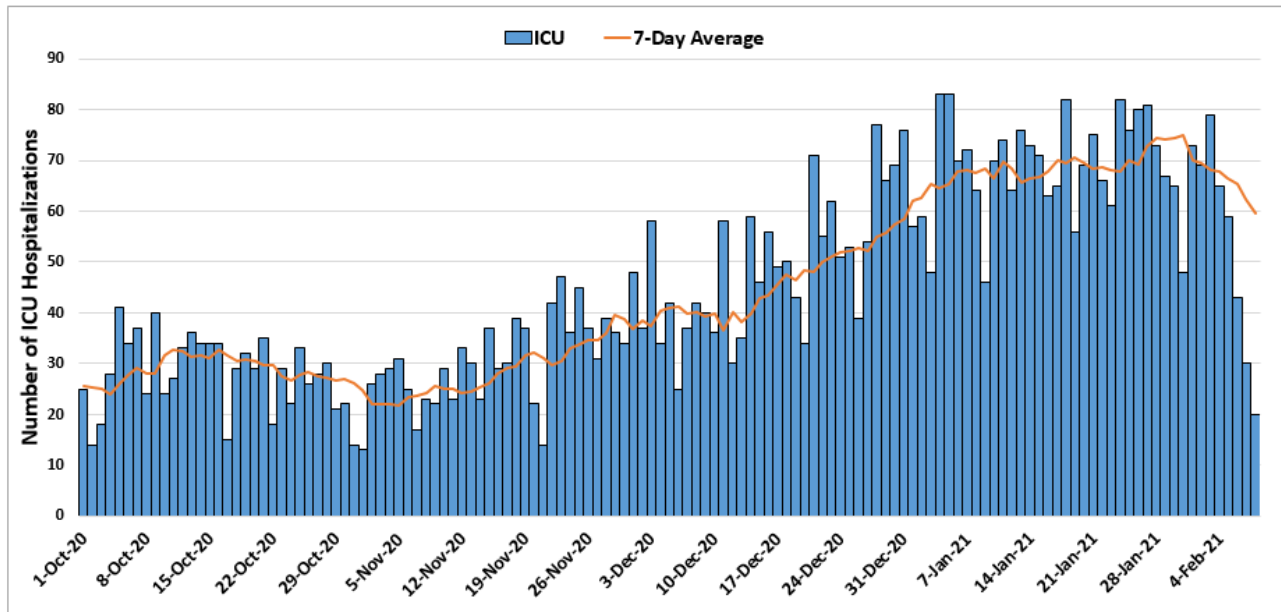


* Data points from March until September 30th are excluded to allow for clarity in trends/patterns

- Data from the 11 hospitals included in this analysis suggests a recent decrease in overall hospitalizations, following a noticeable increase throughout the month of December and plateau during the month of January.

4.3 ICU HOSPITALIZATIONS (CONFIRMED AND PENDING) BY DAY IN THE RICHMOND CATCHMENT AREA AS OF FEB 8, 2021

Total Daily COVID-19 ICU Hospitalizations, October 1st, 2020 – February 8th, 2021
Richmond Catchment Area (5862 of 13833)

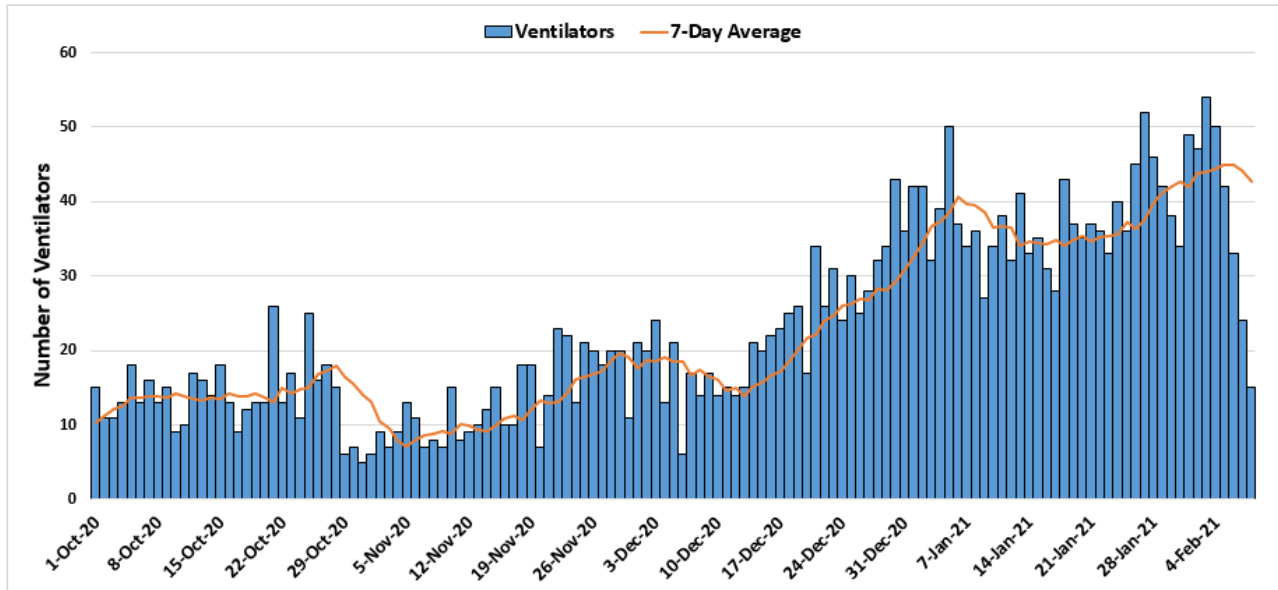


* Data points from March until September 30th are excluded to allow for clarity in trends/patterns

- Following a recent plateau and mild fluctuations throughout January, ICU hospitalizations seem to be decreasing.

4.4 VENTILATOR UTILIZATIONS (PATIENTS ON VENTILATORS) BY DAY IN THE RICHMOND CATCHMENT AREA AS OF FEB 8, 2021

Total Daily COVID-19 Ventilator Utilizations, October 1st, 2020 – February 8th, 2021
Richmond Catchment Area (3006 of 6604)



* Data points from March until September 30th are excluded to allow for clarity in trends/patterns

- Ventilator utilization fluctuated throughout December, and despite peaks towards the end of January, appears to be reaching a plateau, and potential decrease.

5.0 COVID-19 FATALITIES

5.1 SUMMARY OF FATALITIES

Deaths appear to be decreasing in both Richmond and Henrico compared with the last couple of weeks, though trends in the data are typically impacted by reporting lags. Additional death data is available on the [VHD Dashboard](#).

Please note: deaths by subgroup (sex, age, and race) will be reported on a monthly basis moving forward.

6.0 VACCINATION

6.1 VACCINE SUMMARY

Richmond and Henrico Health Districts are currently in Phase 1B of vaccination. Eligible people include healthcare workers, people living and working in long-term care facilities, police, school staff (K-12), childcare workers, and people over the age of 65.

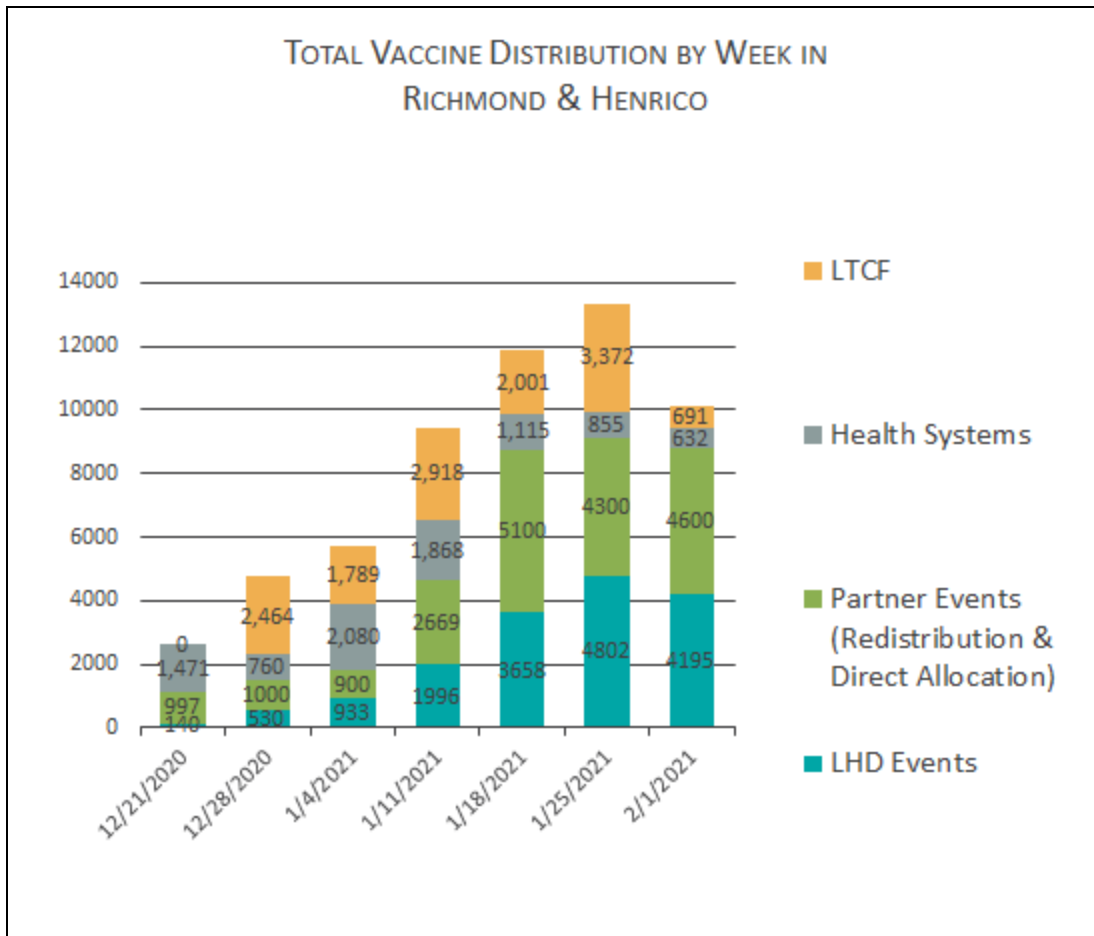
As of Feb 8, 2021, 127,742 doses have been administered in the region, which includes Richmond, Henrico, Chickhominy, and Chesterfield Health Districts. The majority of vaccine recipients in both districts have been female. In Richmond the majority of vaccines have been given to people 30-39 years old. In Henrico the majority of vaccines have been given to people 50-59, closely followed by 30-39 years olds, though these numbers represent counts, rather than rates. Available data indicate that eligible White individuals have received the majority of the vaccine, but a large percentage of recipients' race/ethnicity is unreported.

6.2 VACCINATIONS BY LOCALITY AS OF FEB 8, 2021 - SOURCE: VDH.VIRGINIA.GOV

| HEALTH DISTRICT | LOCALITY | POPULATION | DOSES ADMINISTERED | PEOPLE FULLY VACCINATED |
|-----------------|------------------|------------------|--------------------|-------------------------|
| Chesterfield | Chesterfield | 352,802 | 38,581 | 6,309 |
| | Colonial Heights | 17,428 | 2,067 | 323 |
| | Powhatan | 28,815 | 2,888 | 432 |
| Chickahominy | Charles City | 6,963 | 648 | 50 |
| | Goochland | 23,753 | 2,919 | 398 |
| | Hanover | 107,766 | 14,176 | 2,355 |
| | New Kent | 23,091 | 2,951 | 397 |
| Henrico | Henrico | 330,818 | 44,853 | 7,794 |
| Richmond | Richmond City | 226,622 | 18,659 | 3,720 |
| | Total | 1,118,058 | 127,742 | 21,778 |

As of February 8, 2021, **127,742 doses of the vaccine have been administered in the region, which has a population of 1,118,058. 1.94% of the region's population has been fully vaccinated.** We have set a goal of vaccinating 75% of the population to reach herd immunity. First and second doses of the Pfizer vaccine must be administered at least 21 days apart. First and second doses of the Moderna vaccine must be administered at least 28 days apart.

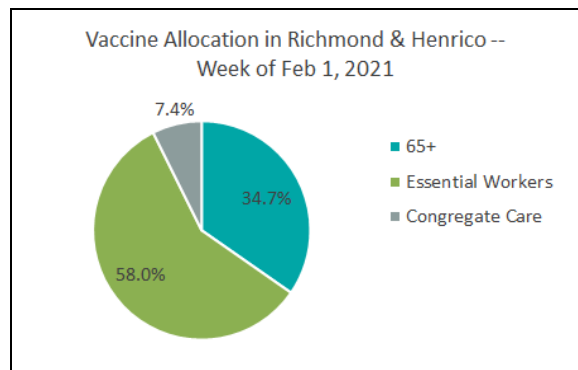
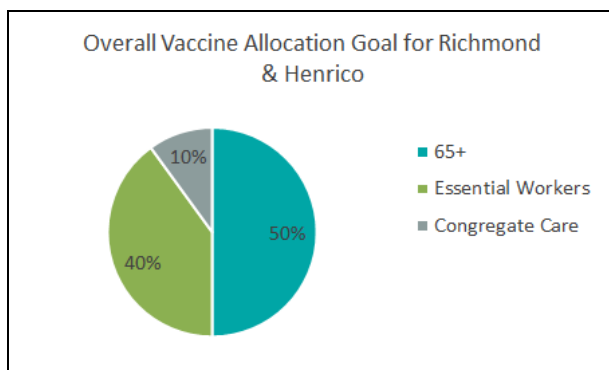
6.5 WEEKLY TOTAL VACCINATIONS OVER TIME FOR RICHMOND AND HENRICO - SOURCE: INTERNAL TRACKING, VIIS



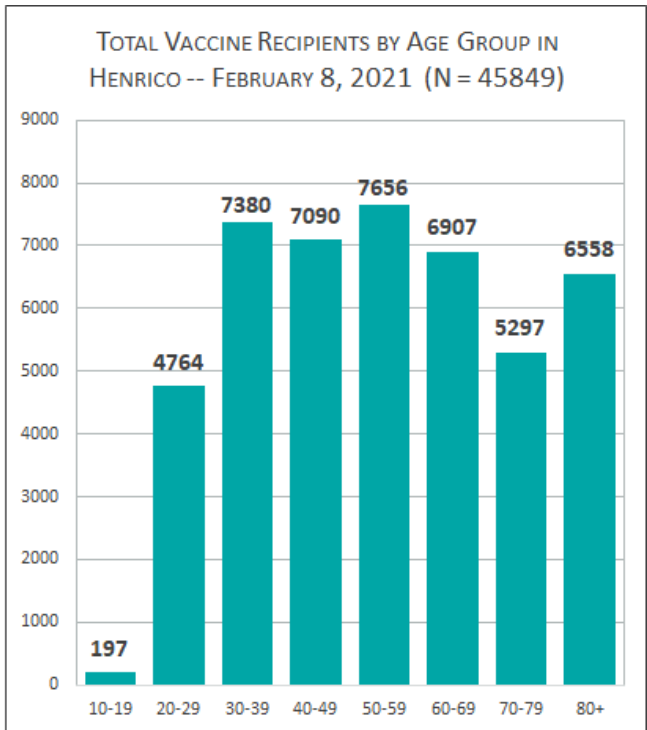
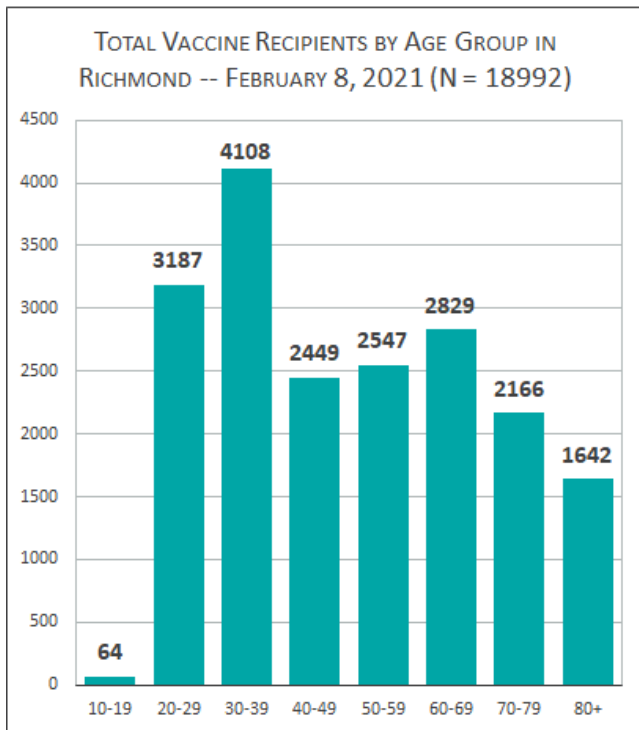
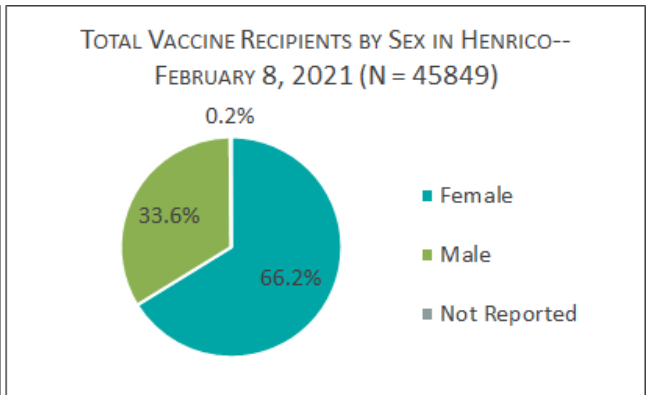
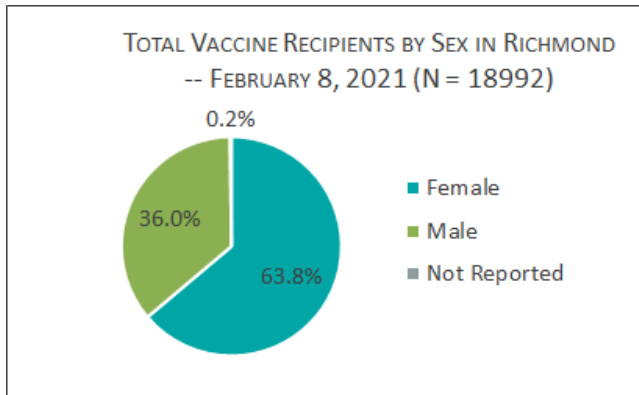
*New health system totals reflect the Richmond hospital catchment area, which includes VCU Health System, Retreat Doctors', Bon Secours Community, CWJ Chippenham, CWJ Johnson Willis, Bon Secours St. Mary's, Henrico Doctors, and Parham Doctors, Bon Secours St. Francis, and Memorial Regional Medical Center. VA Medical Center is included in the COVID-19 hospitalization section of this report but vaccination data for this hospital is not yet available in VIIS.

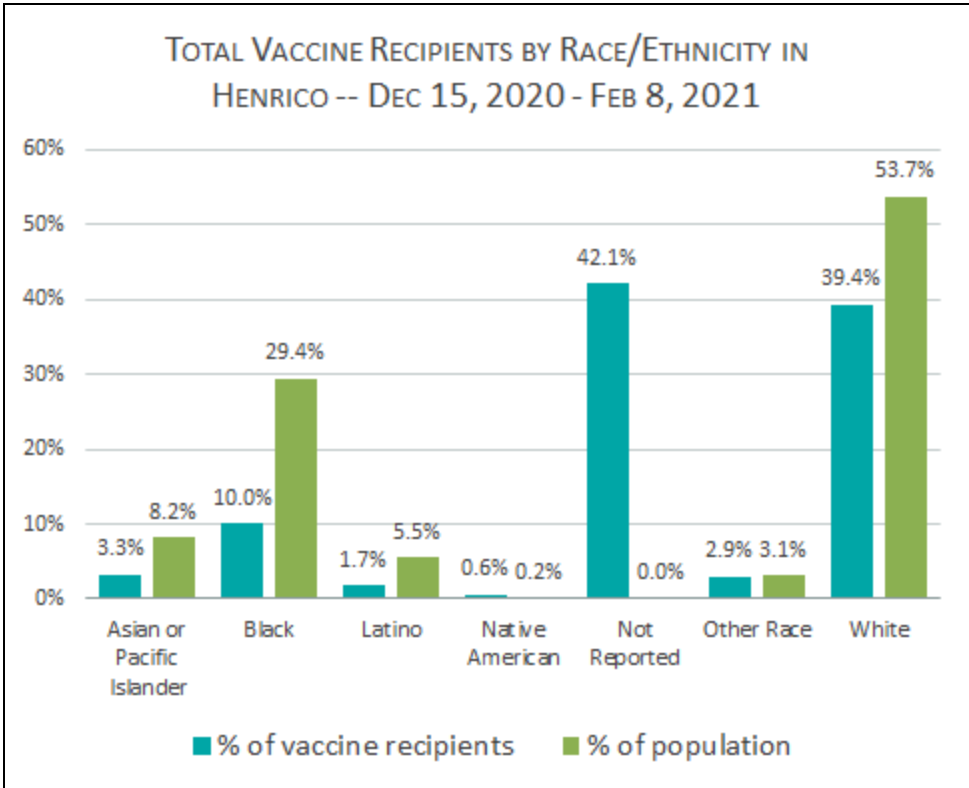
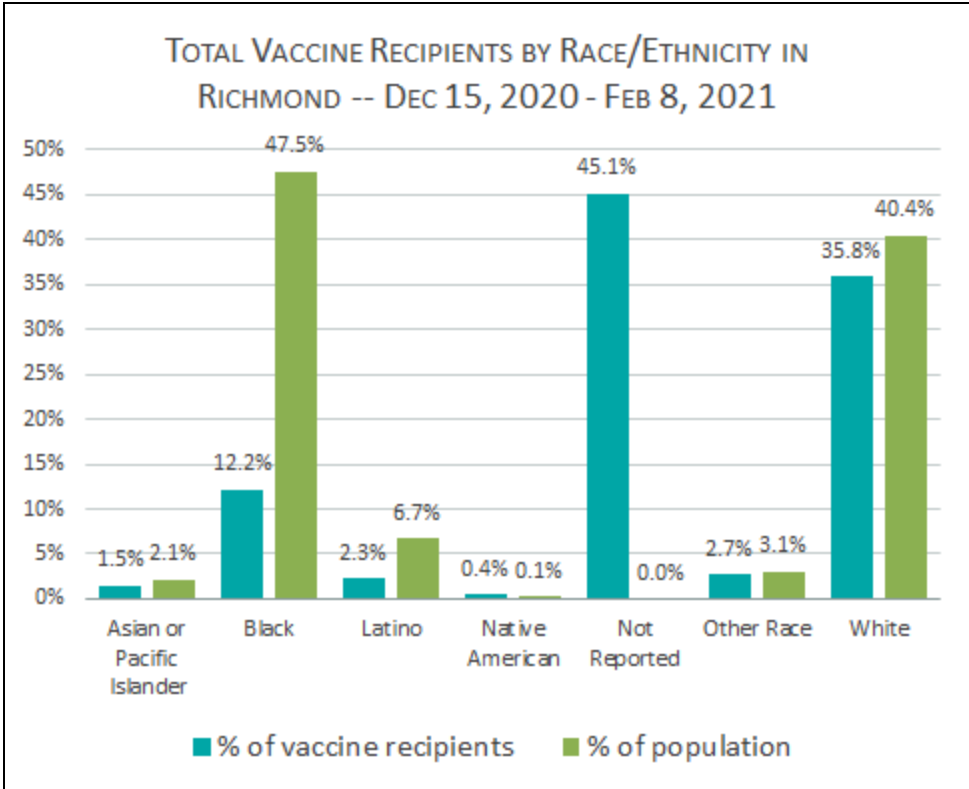
6.6 VACCINE DISTRIBUTION BY ELIGIBLE POPULATION IN RICHMOND & HENRICO - SOURCE: INTERNAL TRACKING

The following charts reflect RCHD/HCHD's goal for vaccine distribution and the actual distribution of vaccine among eligible priority populations in the past week.



6.7 VACCINE DISTRIBUTION BY DEMOGRAPHIC SUBGROUP - SOURCE: VIIS





7.0 APPENDIX

7.1 CENSUS POPULATION ESTIMATES BY AGE AND RACE--RICHMOND CITY AND HENRICO COUNTY

| Richmond City Population Estimates by Age and Race, as of July 1, 2018 (N=228,783) | | | | | Henrico County Population Estimates by Age and Race, as of July 1, 2018 (N=329,261) | | | | |
|--|--------|----------|----------|----------|---|--------|----------|----------|----------|
| Age group (Years) | LATINO | NH WHITE | NH BLACK | NH OTHER | Age group (Years) | LATINO | NH WHITE | NH BLACK | NH OTHER |
| 0-9 | 3807 | 6375 | 13310 | 1232 | 0-9 | 3764 | 17467 | 11946 | 6531 |
| 10-19 | 2282 | 6587 | 13047 | 1554 | 10-19 | 3464 | 18739 | 13872 | 5470 |
| 20-29 | 3417 | 21968 | 18657 | 3146 | 20-29 | 2870 | 19249 | 15019 | 5142 |
| 30-39 | 2817 | 19613 | 14235 | 1897 | 30-39 | 3360 | 22298 | 13542 | 7601 |
| 40-49 | 1901 | 10191 | 10525 | 831 | 40-49 | 2608 | 22194 | 12532 | 5766 |
| 50-59 | 1129 | 10805 | 14747 | 690 | 50-59 | 1696 | 25701 | 13509 | 3338 |
| 60-69 | 525 | 10589 | 13292 | 574 | 60-69 | 819 | 23639 | 10596 | 2368 |
| 70-79 | 218 | 5457 | 5866 | 271 | 70-79 | 391 | 14553 | 5349 | 1147 |
| 80+ | 79 | 3599 | 3369 | 181 | 80+ | 174 | 9618 | 2487 | 442 |