

WEEKLY CASE REPORT FOR EXTERNAL USE

MON FEB 15 - SUN FEB 21, 2021

CONTENTS

KEY TAKEAWAYS	2
1.0 COVID-19 SNAP SHOT	4
1.1 CONFIRMED CASES, HOSPITALIZATIONS, FATALITIES, AND PROBABLE CASES BY COUNTY	4
1.2 CURRENT COVID-19 HOSPITALIZATIONS IN THE RICHMOND CATCHMENT AREA ON FEB 22, 2021	5
2.0 COVID-19 TESTING ENCOUNTERS AND POSITIVITY	5
2.1 TESTING SUMMARY	5
3.0 COVID-19 CASES	6
3.1 SUMMARY OF CASES	6
3.2 CASE REPORTS TRENDS BY DATE (SOURCE-VDH WEBSITE)	6
3.3 CASES BY SEX BY COUNTY	8
3.4 CASES BY AGE GROUP BY COUNTY	9
3.5 CASES AND POPULATION PROPORTIONS BY RACE AND ETHNICITY BY COUNTY	10
4.0 COVID-19 HOSPITALIZATIONS	12
4.1 SUMMARY OF HOSPITALIZATIONS	12
4.2 HOSPITALIZATIONS (CONFIRMED AND PENDING) BY DAY IN THE RICHMOND CATCHMENT AREA AS OF FEB 22, 2021	13
4.3 ICU HOSPITALIZATIONS (CONFIRMED AND PENDING) BY DAY IN THE RICHMOND CATCHMENT AREA AS OF FEB 22, 2021	13
4.4 VENTILATOR UTILIZATIONS (PATIENTS ON VENTILATORS) BY DAY IN THE RICHMOND CATCHMENT AREA AS OF FEB 22, 2021	14
5.0 COVID-19 FATALITIES	14
5.1 SUMMARY OF FATALITIES	14
6.0 VACCINATION	14
6.1 VACCINE SUMMARY	14
6.2 VACCINATIONS BY LOCALITY AS OF FEB 22, 2021 - SOURCE: VDH.VIRGINIA.GOV	15
6.5 WEEKLY TOTAL VACCINATIONS OVER TIME FOR RICHMOND AND HENRICO - SOURCE: INTERNAL TRACKING, VIIS	16
6.6 VACCINE DISTRIBUTION BY ELIGIBLE POPULATION IN RICHMOND & HENRICO - SOURCE: INTERNAL TRACKING	17
6.7 VACCINE DISTRIBUTION BY DEMOGRAPHIC SUBGROUP - SOURCE: VIIS	17
7.0 APPENDIX	22
7.1 CENSUS POPULATION ESTIMATES BY AGE AND RACE--RICHMOND CITY AND HENRICO COUNTY	22

KEY TAKEAWAYS

- According to the [VDH Pandemic Metrics Dashboard](#), the Central Region is still experiencing a high burden of cases and a substantial activity level, but with a decreasing trend in cases. As of February 22, the daily case incidence rate in Richmond was 27.6 cases per 100,000, a decrease from last week's rate of 36.2. Percent **positivity** for the locality is 7.1% and fluctuating. In Henrico, the daily case incidence rate is 24.2 cases per 100,000, a decrease from last week's rate of 33.2. Percent **positivity** for the locality is 8.0% and decreasing.
- **Cases** in both districts continue to decrease. Compared to last week, based on VEDSS data by date, cases in Richmond dropped from a 7 day average of 34 to 27.6 daily new cases per 100,000 population. In Henrico, cases dropped from 30.9 to 24.2 new cases per day, per 100,000.
 - **Regarding subgroups**, in Richmond, males now comprise a higher proportion of cases compared to females, based on data from the past month. Females still comprise a higher proportion of cumulative cases. In Henrico, females still comprise a higher proportion, both cumulatively and in the past month. Regarding the proportion of cases by age group 20-29 year olds continue to be in the lead in Richmond, both cumulatively and in the last 4 weeks. In Henrico, 20-29 year olds continue to lead, though closely followed by 30-39 year olds. Regarding race and ethnicity, in Richmond, the highest proportion of cases is still among Black individuals, again both cumulatively and in the last 4 weeks. In Henrico, cumulatively and in the last 4 weeks, the proportion of cases is highest among White individuals. The proportion of cases for which race/ethnicity is unreported has decreased, though remains notably high in both districts with 28.3% unreported in Richmond and 29.5% in Henrico based on data from the past month.
- Among the 11 hospitals that comprise the Richmond catchment area, **hospitalizations**, ICU hospitalizations, and ventilator use has declined throughout February. Additional data is available on the [VHD Dashboard](#). *Please note: hospitalizations by subgroup (sex, age, and race) will be reported on a monthly basis moving forward.*
- **Deaths** continue to fluctuate but remain low in Richmond and Henrico. Note that trends in the data are typically impacted by reporting lags. Additional death data is available on the [VHD Dashboard](#). *Please note: deaths by subgroup (sex, age, and race) will be reported on a monthly basis moving forward.*
- Richmond and Henrico Health Districts are currently in Phase 1B of **vaccination**. Eligible people include healthcare workers, people living and working in long-term care facilities, police, school staff (K-12), childcare workers, and people over the age of 65. As of February 22, 2021, **177,467 doses have been administered in the Richmond region. 49,516 people have been fully vaccinated.** The majority of vaccine recipients in both districts have been female. In Richmond the majority of vaccines have been given to people 30-39 years old. In Henrico the majority of vaccines have been given to people 50-59, closely followed by 60-69, and 30-39 years olds, though these numbers represent counts, rather than rates. Available data indicate that eligible White individuals have received the majority of the vaccine, but a large percentage of recipients' race/ethnicity is unreported.

1.0 COVID-19 SNAP SHOT

1.1 CONFIRMED CASES, HOSPITALIZATIONS, FATALITIES, AND PROBABLE CASES BY COUNTY

CASE STATUS	RICHMOND CITY	HENRICO COUNTY	VIRGINIA
New cases this week (Feb 22)	401	475	11962
All cases	14499	20946	565270
Confirmed cases	12035	15729	446642
Hospitalizations	650	813	22353
Deaths	137	356	6445
Probable cases	2464	5217	118628
Hospitalizations	20	28	1177
Deaths	24	34	1041
Case rate per 100,000	6292.0	6331.6	6622.6

Weekly cases added are estimated as the difference between the cases recorded from the current and prior week

*Case Rate per 100,000=(confirmed+probable)/population count *100,000.*

Population estimates for the case rate are the most recent as of July 1, 2019 from the [U.S Census Bureau QuickFacts](#)

1.2 CURRENT COVID-19 HOSPITALIZATIONS IN THE RICHMOND CATCHMENT AREA ON FEB 22, 2021

The data included in this section comes from VHASS and it includes data from the following hospitals: VCU Health System, Retreat Doctors', Bon Secours Community, CWJ Chippenham, CWJ Johnson Willis, VA Medical Center, Bon Secours St. Mary's, Henrico Doctors, and Parham Doctors, Bon Secours St. Francis, and Memorial Regional Medical Center.

	TOTAL IN USE FOR COVID-19	CURRENTLY AVAILABLE
Confirmed Hospitalizations	266	104
Pending Hospitalizations	72	
Confirmed - ICU	56	21
Pending - ICU	*	
Confirmed - Ventilators	35	460
Pending - Ventilators	*	

*Counts <5 have been suppressed

Within these 11 hospitals that comprise the Richmond catchment area, there are currently 21 available adult ICU beds, and 460 available ventilators. Based on the VHASS hospital dashboard on February 22nd, 2021, 10 out of the 11 hospitals are operating at normal clinical status. CJW Jonston Willis is operating at a full clinical status.**

**A clinical status of "normal" indicates that hospital clinical resources are operating within normal conditions. A clinical status of "full" indicates that hospital clinical resources are exceeded and acceptable care cannot be provided to additional patients. Diversion or Community surge response is required.

2.0 COVID-19 TESTING ENCOUNTERS AND POSITIVITY

2.1 TESTING SUMMARY

Total tests by testing modality and the associated 7-day average in percent positivity are summarized in the table below. Data are from from the [VDH public dashboard](#) on February 22, 2021.

	RICHMOND CITY		HENRICO COUNTY	
	Tests	Positivity	Tests	Positivity
PCR*	202,042	7.1%	290,053	8.0%
Antigen	29,948	8.7%	66,047	7.2%
Total (PCR, antigen, and antibody)	236,020	7.1%	364,386	8.1%

*All testing metrics included in previous reports have been based on PCR tests

3.0 COVID-19 CASES

3.1 SUMMARY OF CASES

Cases

Cases in both districts continue to decrease. Compared to last week, based on VEDSS data by date, cases in Richmond dropped from a 7 day average of 39 to 33.4 daily new cases per 100,000 population. In Henrico, cases dropped from 81 to 30.9 new cases per day, per 100,000, compared to 81 per 100,000.

Case Demographics

In Richmond, males now comprise a higher proportion of cases compared to females, based on data from the past month. Females still comprise a higher proportion of cumulative cases. In Henrico, females still comprise a higher proportion, both cumulatively and in the past month. Regarding the proportion of cases by age group 20-29 year olds continue to be in the lead in Richmond, both cumulatively and in the last 4 weeks. In Henrico, 20-29 year olds continue to lead, though closely followed by 30-39 year olds. Regarding race and ethnicity, in Richmond, the highest proportion of cases is still among Black individuals, again both cumulatively and in the last 4 weeks. The proportion of cases for which race/ethnicity is unreported continues to, though it remains notably high in both districts with 28.3% unreported in Richmond and 29.5% in Henrico based on data from the past month.

3.2 CASE REPORTS TRENDS BY DATE (SOURCE-VDH WEBSITE)

The report date corresponds to the date the case count was reported publicly. The report date does not have any equivalent variable in VEDSS, and cannot be directly linked to case-specific dates (e.g., event dates or lab report dates). Case counts by report date are estimated by subtracting the cumulative cases on the previous day from that of the current day. The 7-day moving average is a recurrent average of the number of cases for each 7-day data sequence.

Number of New Cases Reported ^A	7-Day Average Number of Daily New Cases Reported	7-Day Average Number of New Daily Cases Reported, Rate per 100,000 Population	Total Number of New Cases per 100,000 Population within last 14 days
64	63	27.6	446.3

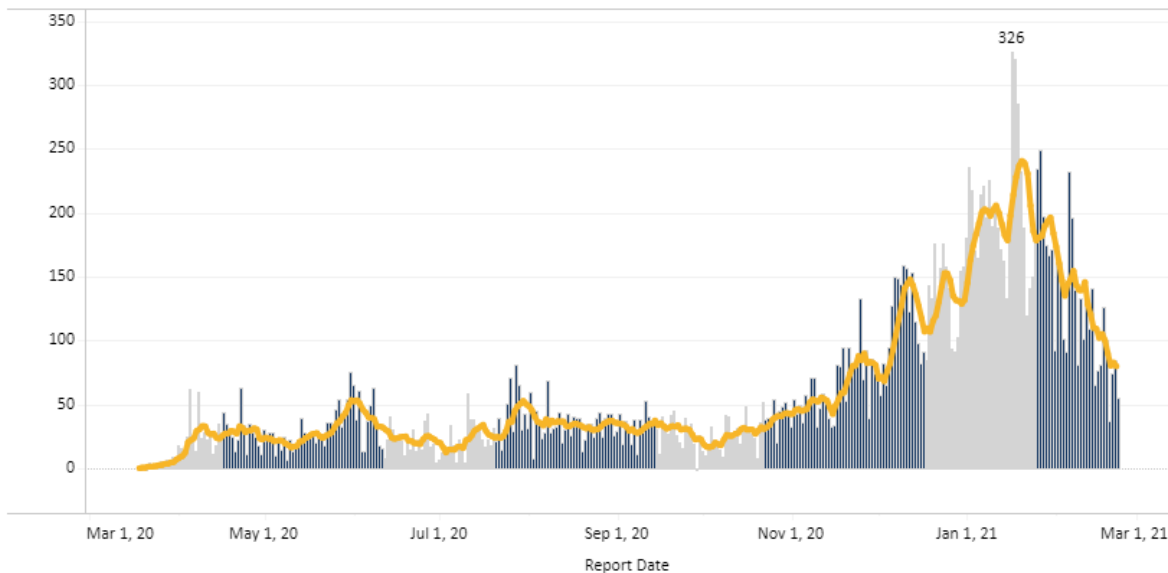
Report Date Daily Cases Counts - Richmond City



- In Richmond, the 7-day average number of daily new cases reported this week appears to be plateauing or slightly decreasing. A total of 64 new cases were reported on February 22, 2021, but with a 7-day average of 27.6 new daily cases per 100,000 population, compared to 41 new cases and a 7-day average of 33.4 a week ago.

Number of New Cases Reported^	7-Day Average Number of Daily New Cases Reported	7-Day Average Number of New Daily Cases Reported, Rate per 100,000 Population	Total Number of New Cases per 100,000 Population within last 14 days
55	80	24.2	401.8

Report Date Daily Cases Counts - Henrico

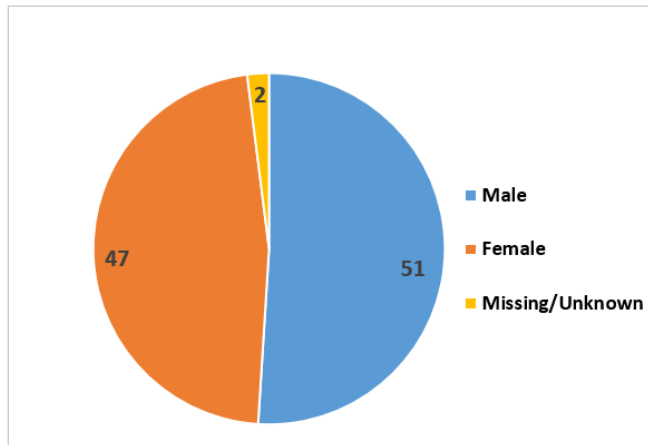


- In Henrico, new cases reported per day also appear to be decreasing. A total of 55 new cases were reported on February 22 with a 7-day average of 24.2 daily cases per 100,000 population, compared to 81 new cases and a 7-day average of 30.9 a week ago.

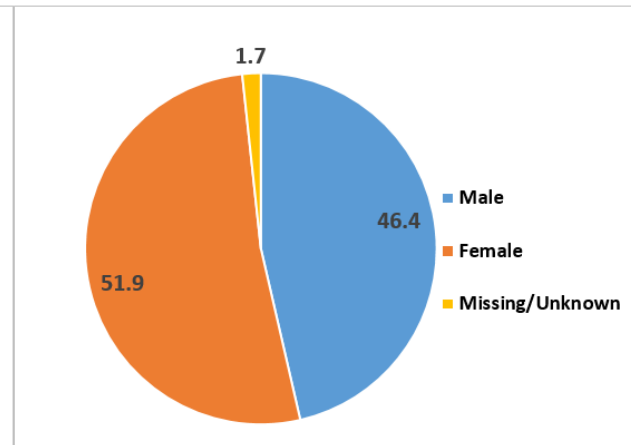
3.3 CASES BY SEX BY COUNTY

All percentages are based on overall case distribution, rather than the proportion of known cases for each measure, and therefore may not correspond directly with VDH percentages.

**COVID-19 case distribution by Sex in the last 4 weeks
(Jan 19 – Feb 21, 2021) – Richmond City, VA (N=1807)**

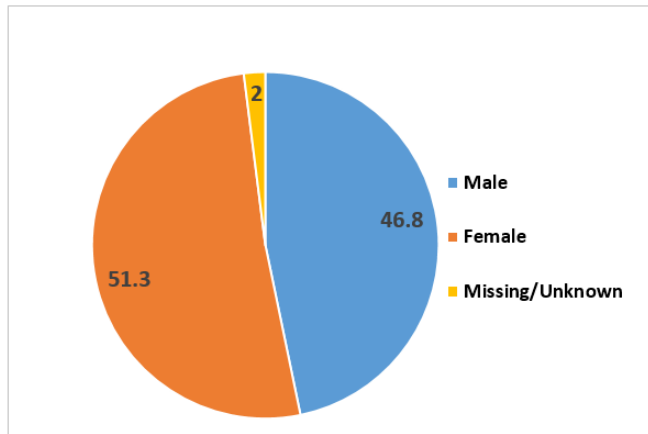


**Cumulative COVID-19 case distribution by Sex as of
February 21, 2021 – Richmond City, VA (N=14499)**

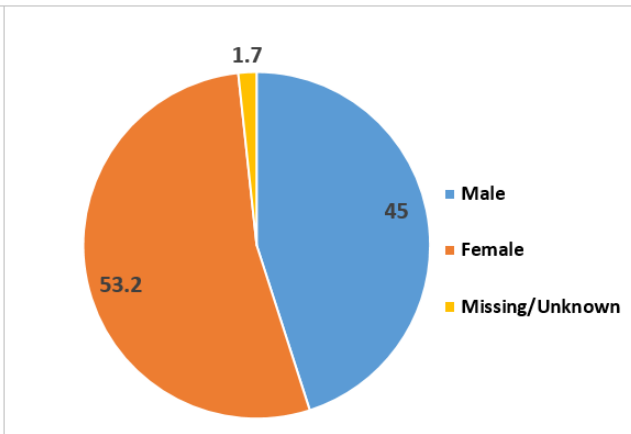


- In Richmond, males now comprise a higher proportion of cases relative to females in the last 4 weeks (51.0% vs 47.0%), but females comprise a higher proportion cumulatively (51.9% vs 46.4%).

**COVID-19 case distribution by Sex in the last 4 weeks
(Jan 19 – Feb 21 2021) – Henrico County, VA (N=2336)**



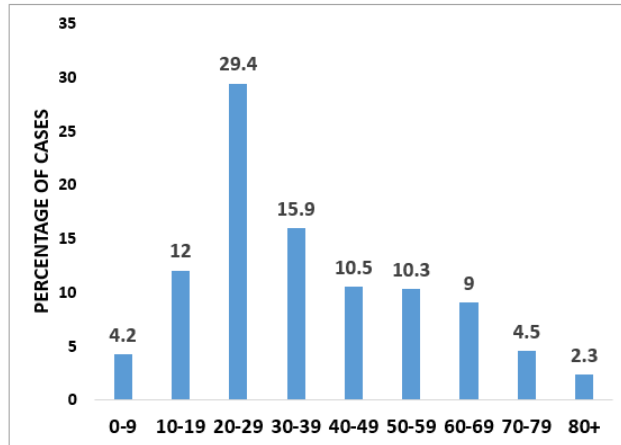
**Cumulative COVID-19 case distribution by Sex as of
February 21, 2021 – Henrico County, VA (N=20946)**



- In Henrico, females comprise a much higher proportion of cases relative to males both in the last 4 weeks (51.3% vs 46.8%) as well as cumulatively (53.2% vs 45.0%).

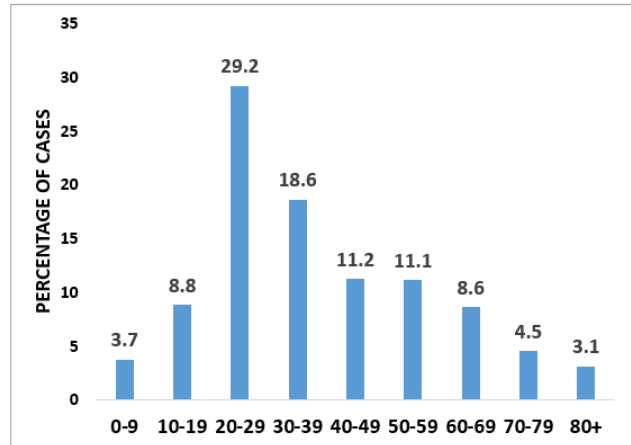
3.4 CASES BY AGE GROUP BY COUNTY

COVID-19 case distribution by Age group in last 4 weeks (Jan 19 – Feb 21, 2021) – Richmond City, VA (N=1807)



*Age is missing for 1.7% (n=31) of cases

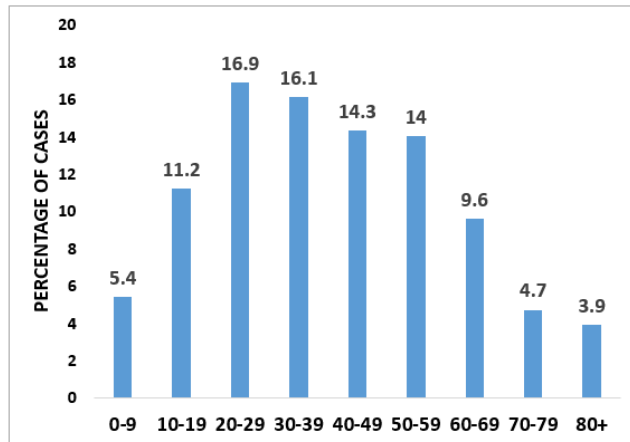
Cumulative COVID-19 case distribution by Age group as of February 21, 2021 – Richmond City, VA (N=14499)



*Age is missing for 1.1% (n=163) of cases

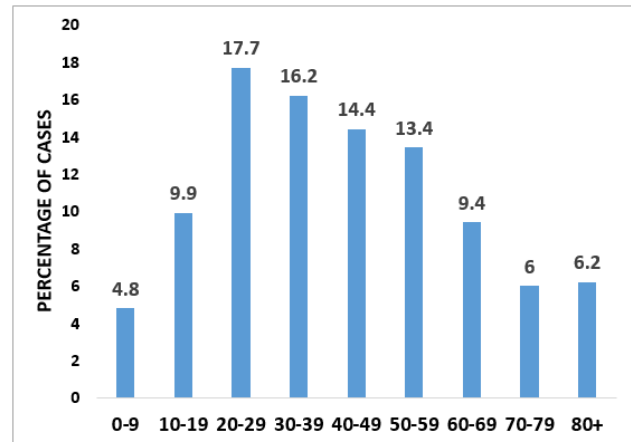
- In Richmond, individuals aged 20-29 (28.0%) still comprise the overwhelmingly highest number of cases in the last four weeks, followed by individuals aged 30-39 years (15.8%).

COVID-19 case distribution by Age group in the last 4 weeks (Jan 19 – Feb 21, 2021) – Henrico County, VA (N=2636)



*Age is missing for 3.9% (n=102) of cases

Cumulative COVID-19 case distribution by Age group as of February 21, 2021 – Henrico County, VA (N=20946)



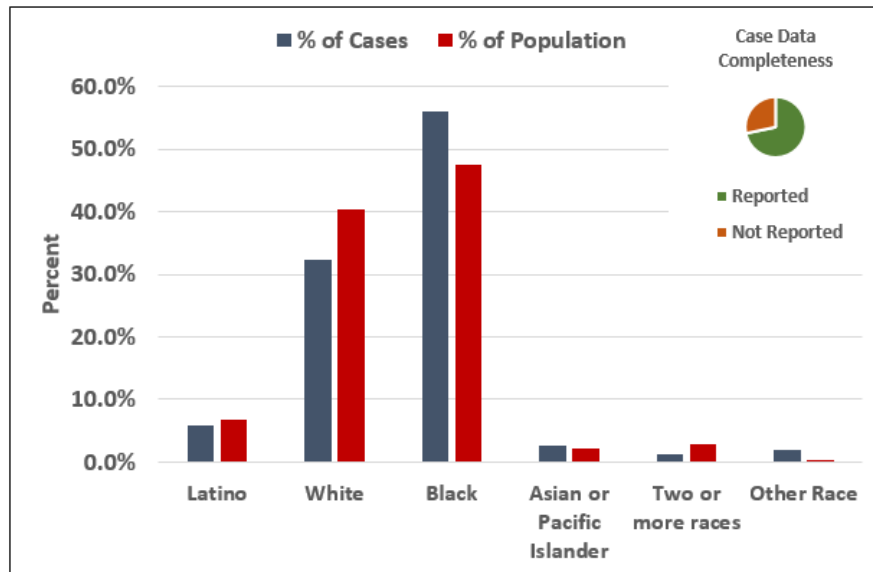
*Age is missing for 1.6% (n=344) of cases

- In Henrico, individuals aged 20-29 (16.5%) and 30-39 years (16.1%) comprise the highest number of cases in the last four weeks, followed by 40-49 years (13.1%) and 50-59 years (11.5%), as case burdens are somewhat more evenly distributed across multiple age groups.

3.5 CASES AND POPULATION PROPORTIONS BY RACE AND ETHNICITY BY COUNTY

Population estimates for the Race and Ethnicity subgroup analyses are from the [2018 ACS 5-year estimates](#)

COVID-19 case distribution by Race and Ethnicity in the last 4 weeks (Jan 19 – Feb 21, 2021) – Richmond City, VA (N=1807)

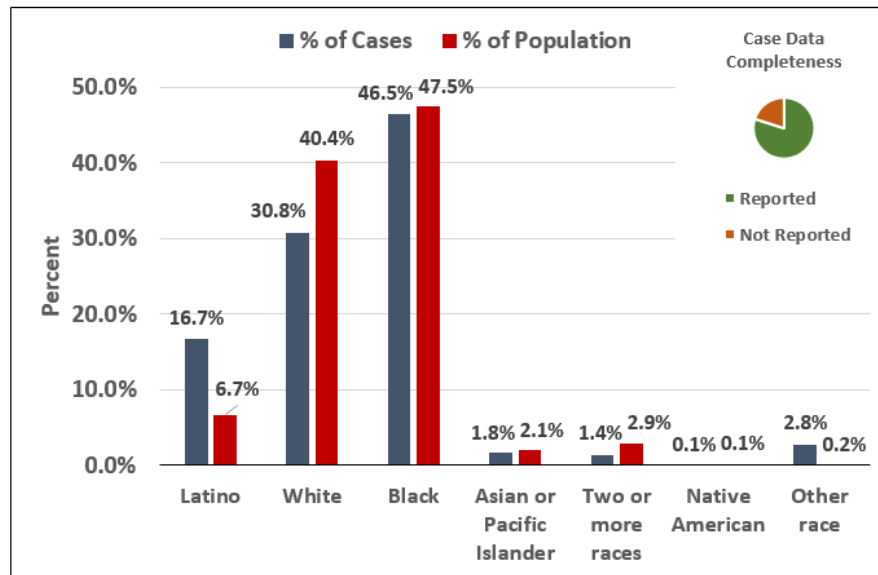


*For race/ethnicity identification among cases, "Not Reported" comprises 28.3% (n=511).

*Missing and Unknown Ethnicities were assumed to be of Non-Hispanic ethnicity

*Cases among Native Americans are suppressed (counts < 5)

Cumulative COVID-19 case distribution by Race and Ethnicity as of February 21, 2021 – Richmond City, VA (N=14499)



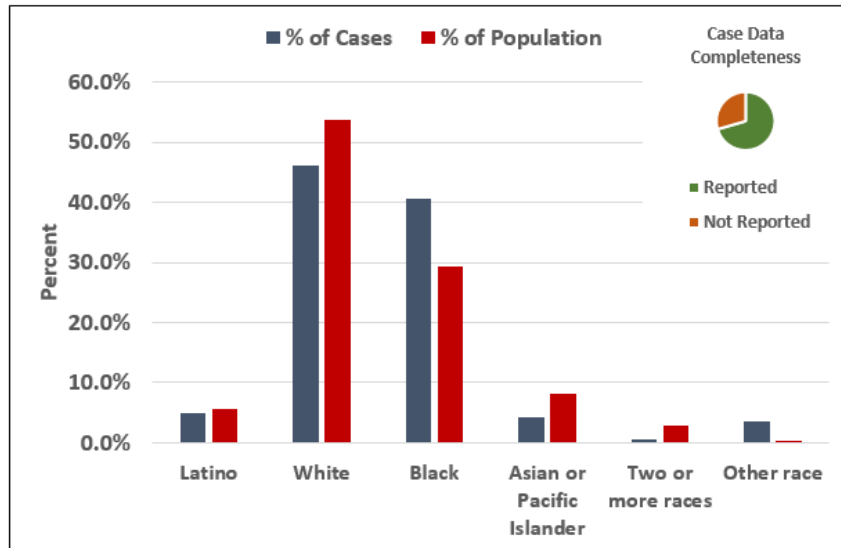
*For race/ethnicity identification among cases, "Not Reported" comprises 20.1% (n=2919).

*Missing and Unknown Ethnicities were assumed to be of Non-Hispanic ethnicity

- In Richmond, the case burden for Black individuals over the last 4 weeks (55.9%) is disproportionately high relative to their population percentage (47.5%), while the case burden for White individuals is disproportionately low both in the last four weeks (32.2%) and cumulatively (30.8%) relative to their population percentage (40.4%). While the cumulative case burden for

Latino individuals (16.7%) is disproportionately high compared to their population percentage (6.7%), the case burden for Latino individuals has been much lower over the last four weeks (5.9%).

COVID-19 case distribution by Race and Ethnicity in the last 4 weeks (Jan 19 – Feb 21, 2021) – Henrico County, VA (N=2646)

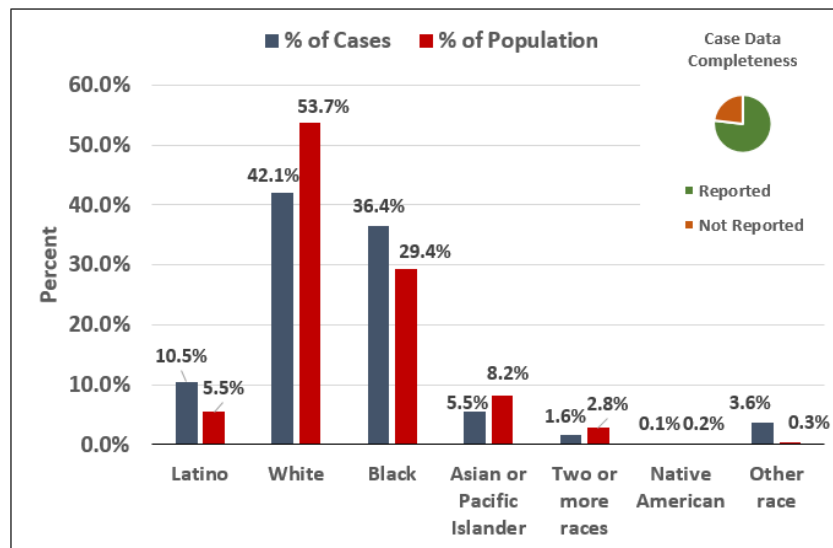


*For race/ethnicity identification among cases, "Not Reported" comprises 29.5% (n=778).

*Missing and Unknown Ethnicities were assumed to be of Non-Hispanic ethnicity

*Cases among Native Americans are suppressed (counts < 5)

Cumulative COVID-19 case distribution by Race and Ethnicity as of February 21, 2021 – Henrico County, VA (N=20946)



*For race/ethnicity identification among cases, "Not Reported" comprises 23.1% (n=4834).

*Missing and Unknown Ethnicities were assumed to be of Non-Hispanic ethnicity

- In Henrico, the case burden for Black individuals over the last 4 weeks (40.7%) and cumulatively (36.4%) is disproportionately high relative to their population percentage (29.4%), while the case burden for White individuals is disproportionately low both in the last four weeks (42.1%) and cumulatively (46.1%) relative to their population percentage (53.7%). While the cumulative case

burden for Latino individuals (10.5%) is disproportionately high compared to their population percentage (5.5%), the case burden for Latino individuals has been much lower recently (4.8%).

4.0 COVID-19 HOSPITALIZATIONS

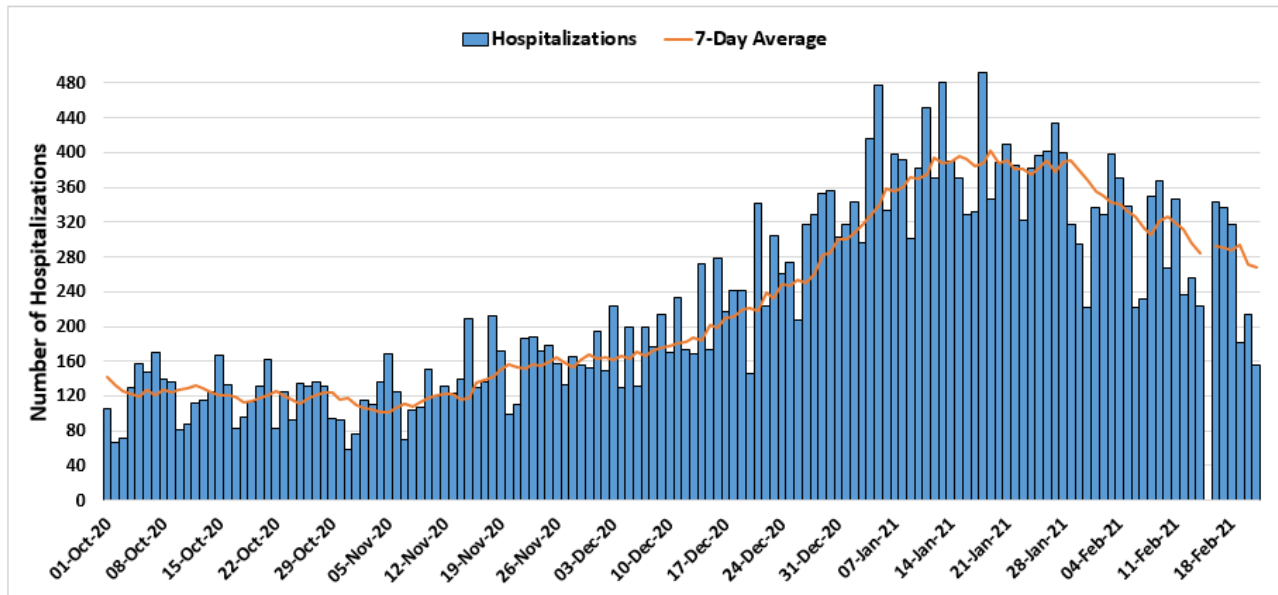
4.1 SUMMARY OF HOSPITALIZATIONS

As with last week, VEDSS data suggest that hospitalizations among Richmond patients are declining overall, though hospitalizations have fluctuated since November and the data may be impacted by reporting lags. Hospitalizations among residents of Henrico also appear to be declining overall (see [VDH Dashboard](#) for additional trend data). Looking more broadly at the 11 hospitals that comprise the Richmond catchment area, data show plateaus in total hospitalizations, ICU hospitalizations. Ventilator use has fluctuated throughout the month of January. As summarized at the beginning of this report, 10 out of 11 hospitals are operating at a normal clinical status.

Please note: hospitalizations by subgroup (sex, age, and race) will be reported on a monthly basis moving forward.

4.2 HOSPITALIZATIONS (CONFIRMED AND PENDING) BY DAY IN THE RICHMOND CATCHMENT AREA AS OF FEB 22, 2021

Total Daily COVID-19 Hospitalizations, October 1st, 2020 – February 22nd, 2021
Richmond Catchment Area (32448 of 61650)



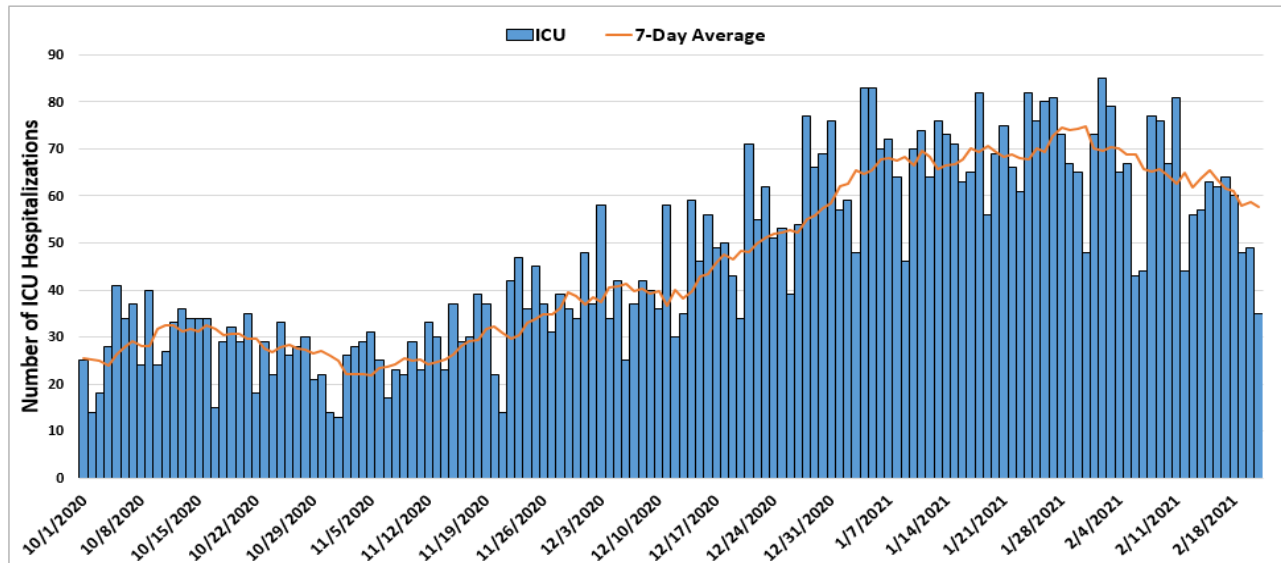
* Data points from March until September 30th are excluded to allow for clarity in trends/patterns

* Data points from February 15th, 2021 were omitted due to issues with data quality

- Data from the 11 hospitals included in this analysis suggests a recent decrease in overall hospitalizations, following a noticeable increase throughout the month of December, and a plateau during the month of January. Generally, hospitalizations seem to be trending downward.

4.3 ICU HOSPITALIZATIONS (CONFIRMED AND PENDING) BY DAY IN THE RICHMOND CATCHMENT AREA AS OF FEB 22, 2021

Total Daily COVID-19 ICU Hospitalizations, October 1st, 2020 – February 22nd, 2021
Richmond Catchment Area (6727 of 14698)

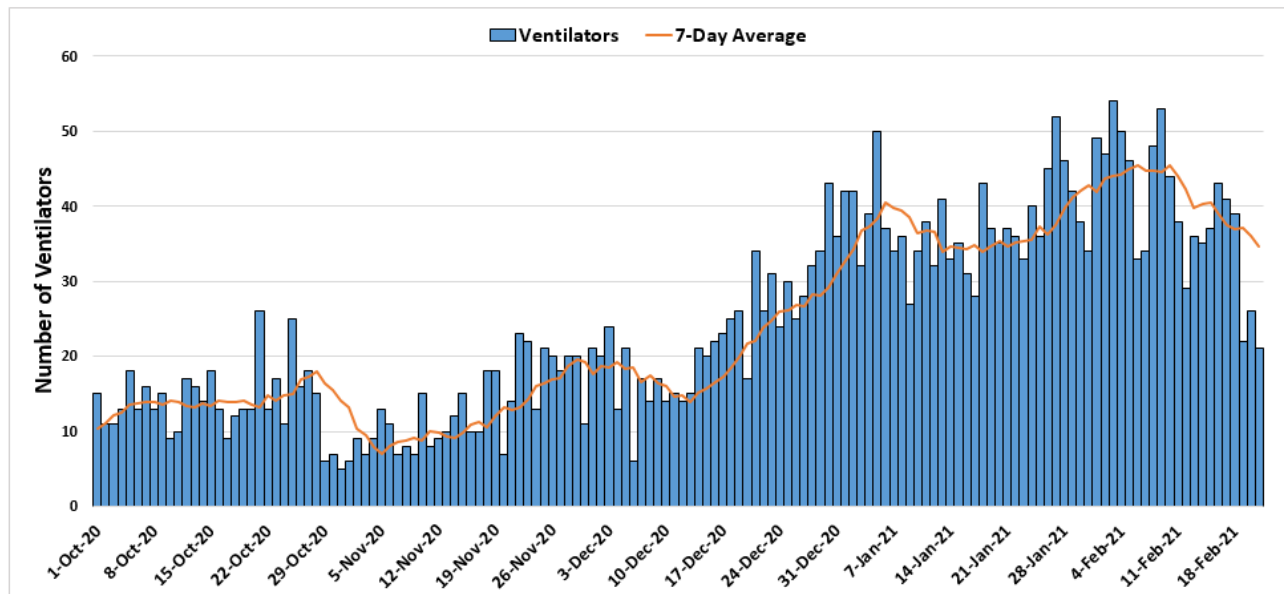


* Data points from March until September 30th are excluded to allow for clarity in trends/patterns

- Following a recent plateau and mild fluctuations, ICU hospitalizations have been decreasing overall throughout the month of February.

4.4 VENTILATOR UTILIZATIONS (PATIENTS ON VENTILATORS) BY DAY IN THE RICHMOND CATCHMENT AREA AS OF FEB 22, 2021

Total Daily COVID-19 Ventilator Utilizations, October 1st, 2020 – February 22nd, 2021
Richmond Catchment Area (3517 of 7121)



* Data points from March until September 30th are excluded to allow for clarity in trends/patterns

- Ventilator utilization fluctuated throughout December, and despite peaks towards the end of January, appears to be decreasing overall during the month of February.

5.0 COVID-19 FATALITIES

5.1 SUMMARY OF FATALITIES

Deaths continue to fluctuate but remain low in Richmond and Henrico. Note that trends in the data are typically impacted by reporting lags. Additional death data is available on the [VHD Dashboard](#).

Please note: deaths by subgroup (sex, age, and race) will be reported on a monthly basis moving forward.

6.0 VACCINATION

6.1 VACCINE SUMMARY

Richmond and Henrico Health Districts are currently in Phase 1B of vaccination. Eligible people include healthcare workers, people living and working in long-term care facilities, police, school staff (K-12), childcare workers, and people over the age of 65.

As of February 22, 2021, 177,467 doses have been administered in the Richmond region. 49,516 people have been fully vaccinated. The majority of vaccine recipients in both districts have been female. In Richmond the majority of vaccines have been given to people 30-39 years old. In Henrico the majority of vaccines have been given to people 50-59, closely followed by 60-69, and 30-39 years olds, though these

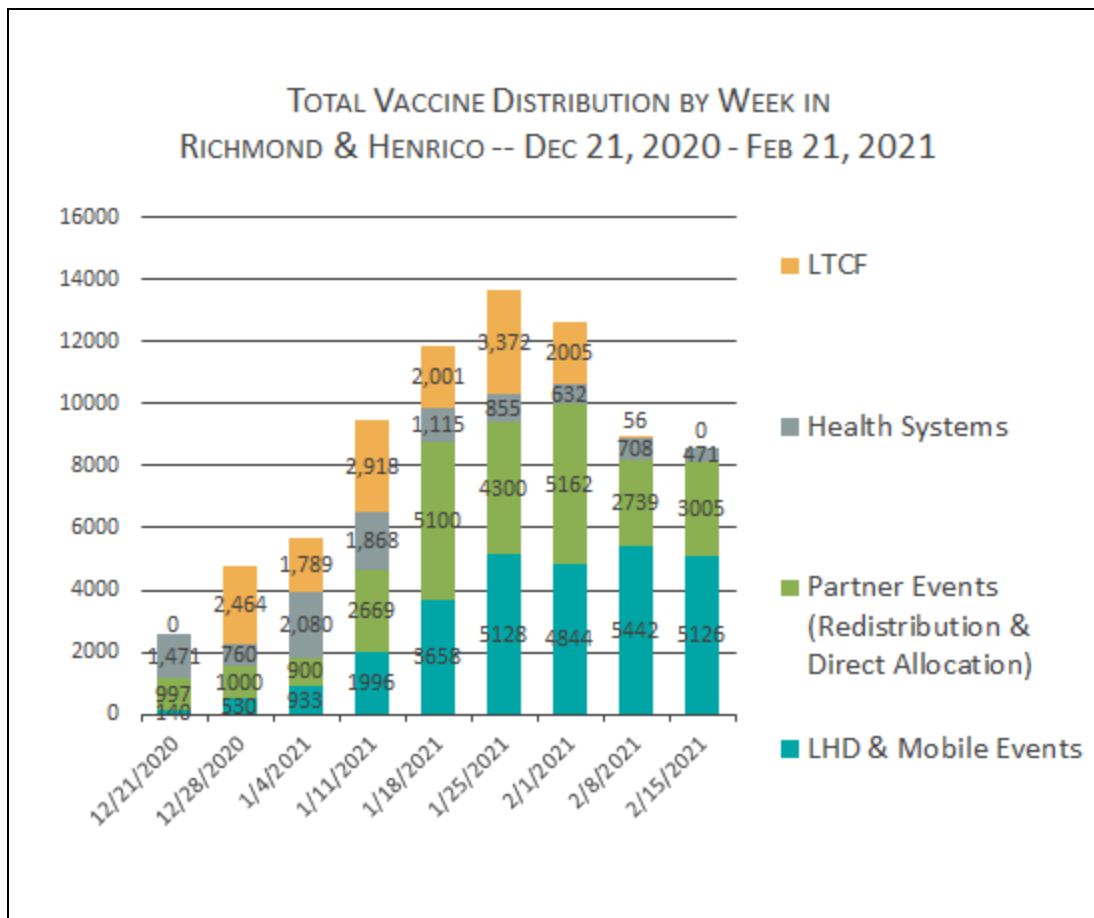
numbers represent counts, rather than rates. Available data indicate that eligible White individuals have received the majority of the vaccine, but a large percentage of recipients' race/ethnicity is unreported.

6.2 VACCINATIONS BY LOCALITY AS OF FEB 22, 2021 - SOURCE: [VDH.VIRGINIA.GOV](https://www.vdh.virginia.gov)

HEALTH DISTRICT	LOCALITY	POPULATION	DOSES ADMINISTERED	PEOPLE FULLY VACCINATED
Chesterfield	Chesterfield	352,802	54,303	14,467
	Colonial Heights	17,428	2,812	724
	Powhatan	28,815	4,130	1,024
Chickahominy	Charles City	6,963	851	191
	Goochland	23,753	4,090	1,043
	Hanover	107,766	18,788	5,403
	New Kent	23,091	4,403	1,411
Henrico	Henrico	330,818	61,520	17,320
Richmond	Richmond City	226,622	26,570	7,933
Total		1,118,058	177,467	49,516

As of February 22, 2021, **177,467 doses of the vaccine have been administered in the region, which has a population of 1,118,058. 4.42% of the region's population has been fully vaccinated.** We have set a goal of vaccinating 75% of the population to reach herd immunity. First and second doses of the Pfizer vaccine must be administered at least 21 days apart. First and second doses of the Moderna vaccine must be administered at least 28 days apart.

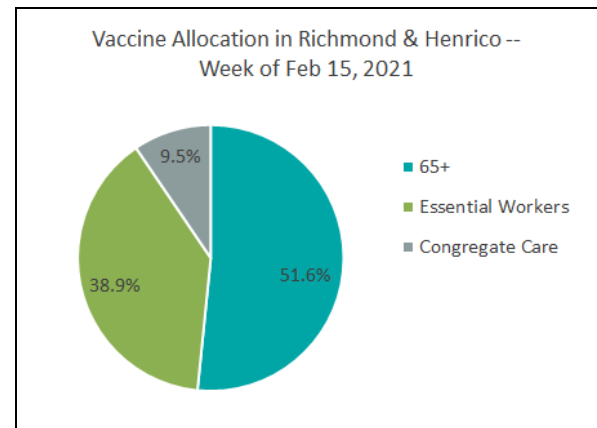
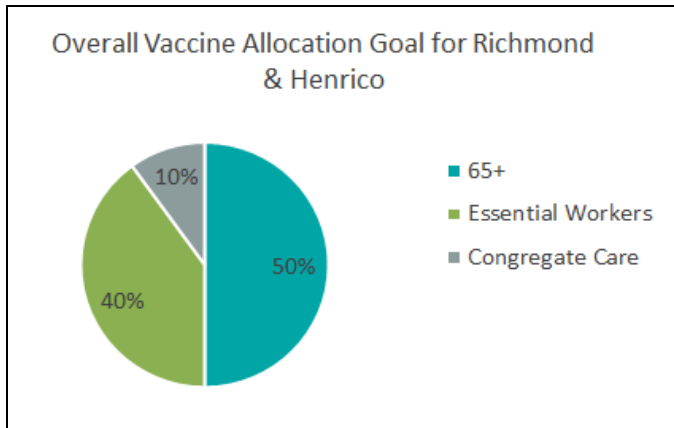
6.5 WEEKLY TOTAL VACCINATIONS OVER TIME FOR RICHMOND AND HENRICO - SOURCE: INTERNAL TRACKING, VIIS



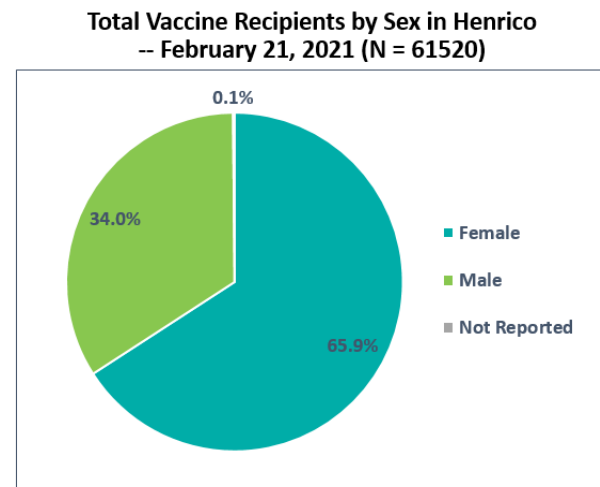
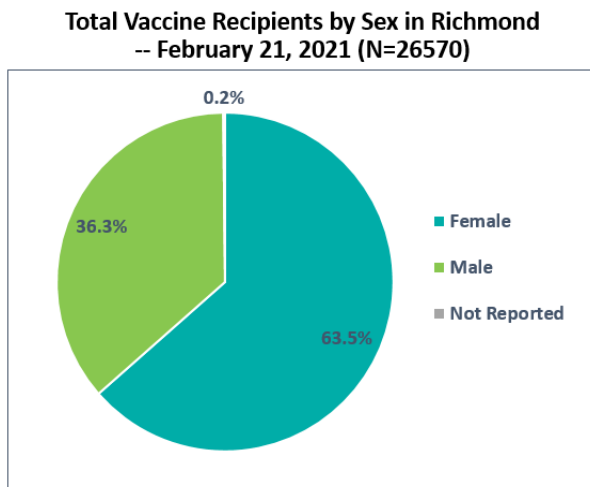
*New health system totals reflect the Richmond hospital catchment area, which includes VCU Health System, Retreat Doctors', Bon Secours Community, CWJ Chippenham, CWJ Johnson Willis, Bon Secours St. Mary's, Henrico Doctors, and Parham Doctors, Bon Secours St. Francis, and Memorial Regional Medical Center. VA Medical Center is included in the COVID-19 hospitalization section of this report but vaccination data for this hospital is not yet available in VIIS.

6.6 VACCINE DISTRIBUTION BY ELIGIBLE POPULATION IN RICHMOND & HENRICO - SOURCE: INTERNAL TRACKING

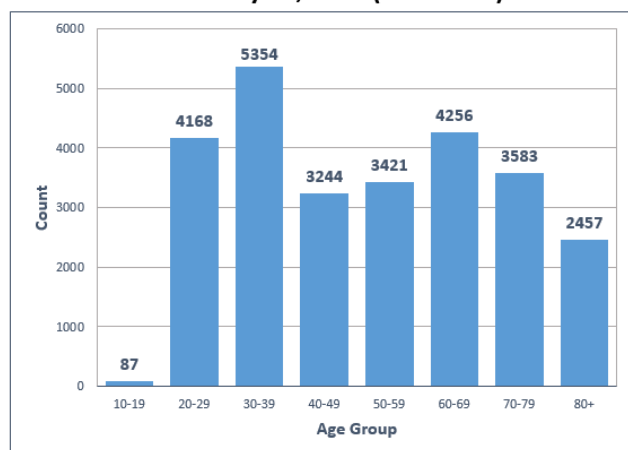
The following charts reflect RCHD/HCHD's goal for vaccine distribution and the actual distribution of vaccine among eligible priority populations in the past week.



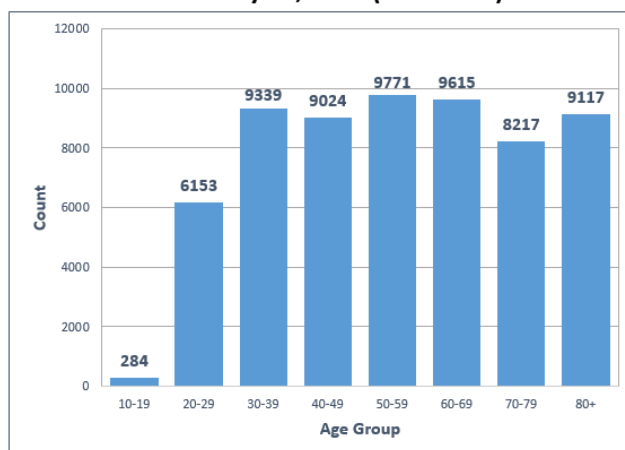
6.7 VACCINE DISTRIBUTION BY DEMOGRAPHIC SUBGROUP - SOURCE: VIIS



**Total Vaccine Recipients by Age Group in Richmond
– February 21, 2021 (N = 26570)**

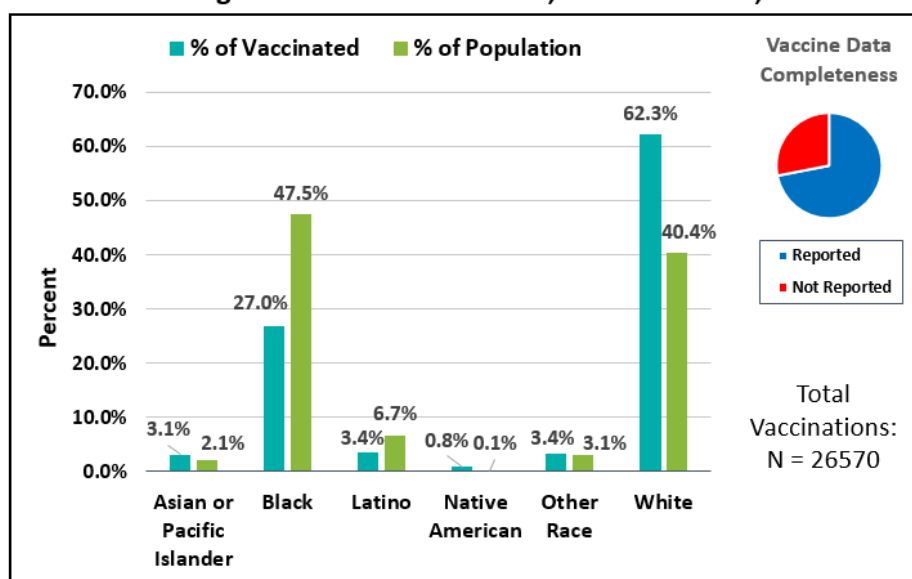


**Total Vaccine Recipients by Age Group in Henrico
– February 21, 2021 (N = 61520)**



The following charts compare the percentage breakdown of racial or ethnic identification of vaccinated individuals to the expected percentage breakdown of the racial or ethnic identification of the population. A notable discrepancy can be seen when looking at Black individuals, who comprise 47.5% of the Richmond population and 29.4% of the Henrico population yet only 27.0% of vaccine recipients in Richmond and 19.3% of vaccine recipients in Henrico.

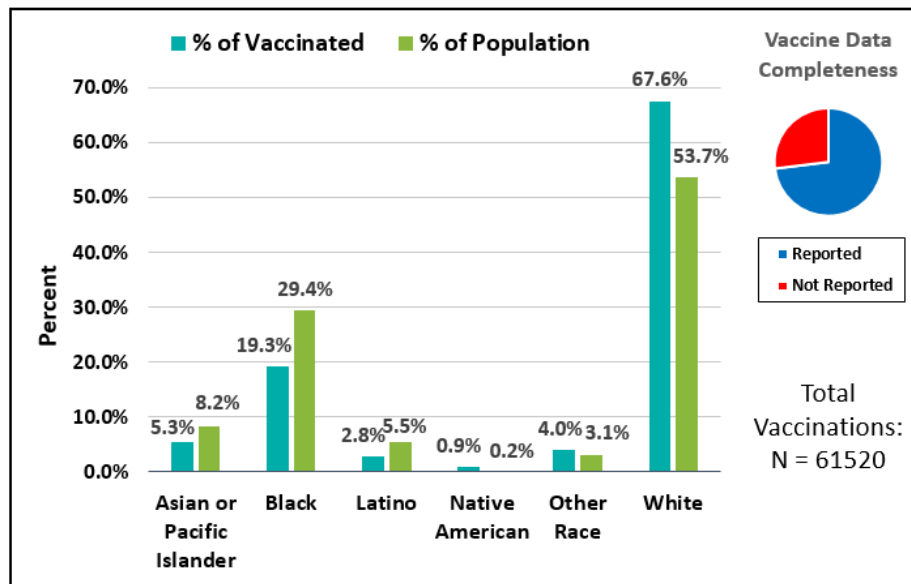
**Vaccine Recipients vs. Population by Race/Ethnicity
Percentages in Richmond – Dec 15, 2020 to Feb 21, 2021**



*For race/ethnicity of vaccine recipients, "Not Reported" comprises 28.1% (n=7455).

*Missing and Unknown Ethnicities were assumed to be of Non-Hispanic ethnicity.

Vaccine Recipients vs. Population by Race/Ethnicity Percentages in Henrico – Dec 15, 2020 to Feb 21, 2021

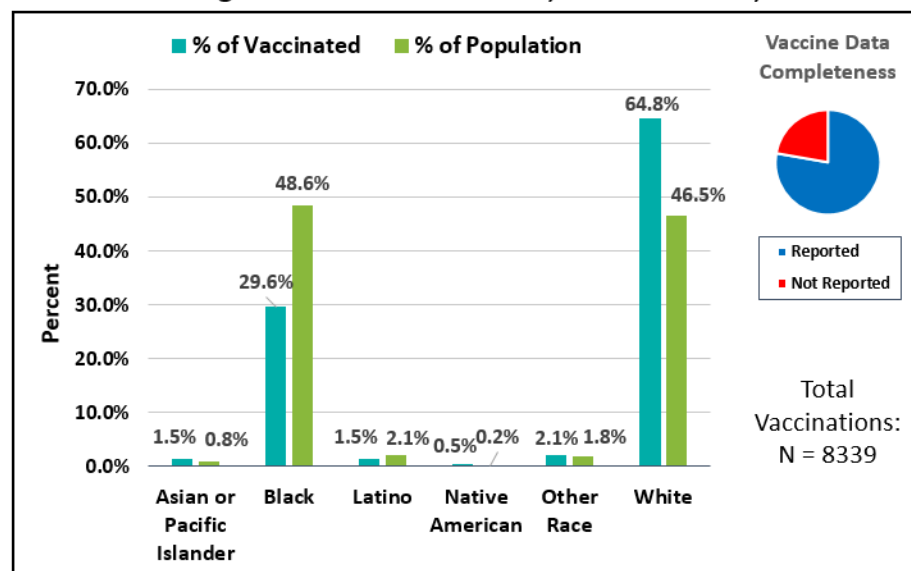


*For race/ethnicity of vaccine recipients, "Not Reported" comprises 27.0% (n=16581).

*Missing and Unknown Ethnicities were assumed to be of Non-Hispanic ethnicity.

The figures below compare the percentage breakdown by race and ethnicity specifically for individuals 65 and over. In Richmond City, Black individuals comprise 48.6% of the population of those aged 65 years and older, yet make up only 22.7% of vaccine recipients. This discrepancy can also be noted in Henrico, where Black individuals make up 25.6% of the population, yet thus far have only comprised 12.4% of vaccine recipients.

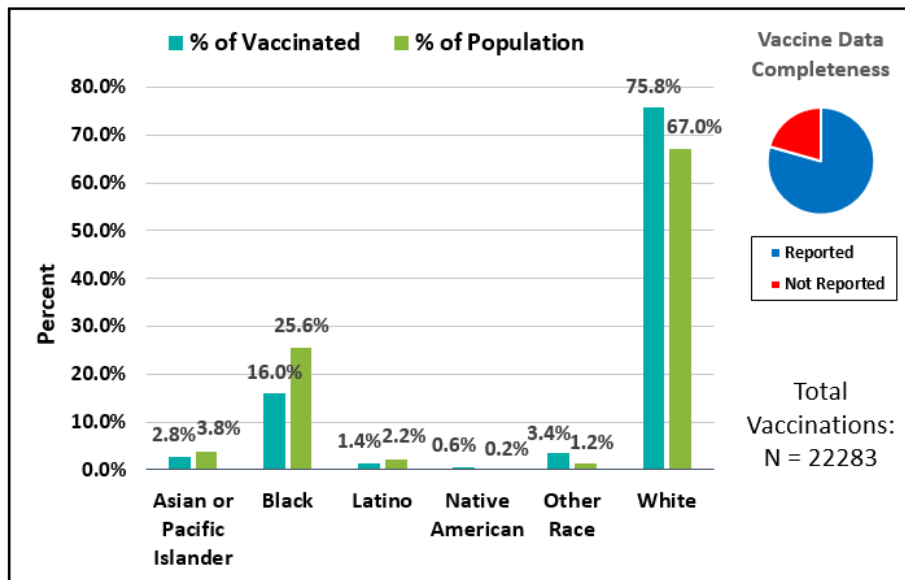
Vaccine Recipients vs. Population 65 and Over by Race/Ethnicity Percentages in Richmond – Dec 15, 2020 to Feb 21, 2021



*For race/ethnicity of vaccine recipients, "Not Reported" comprises 22.2% (n=1855).

*Missing and Unknown Ethnicities were assumed to be of Non-Hispanic ethnicity.

Vaccine Recipients vs. Population 65 and Over by Race/Ethnicity Percentages in Henrico – Dec 15, 2020 to Feb 21, 2021

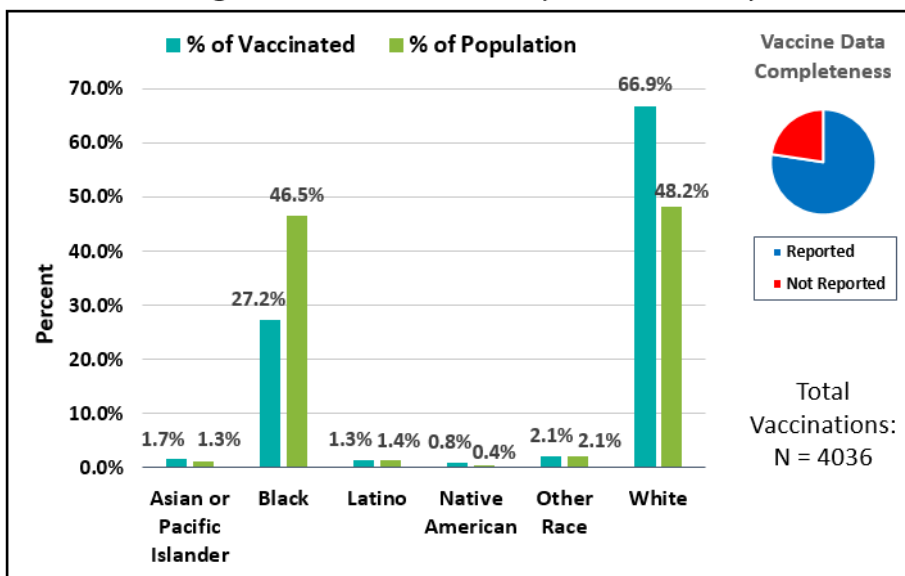


*For race/ethnicity of vaccine recipients, "Not Reported" comprises 20.6% (n=4594).

*Missing and Unknown Ethnicities were assumed to be of Non-Hispanic ethnicity.

Finally, we evaluate the same metrics specifically for individuals 75 and over. Again, there is a notable discrepancy where Black individuals comprise 46.5% of the Richmond population 75 and over but only 27.2% of vaccine recipients and 22.9% of the Henrico population 65 and over but only 12.4% of vaccine recipients.

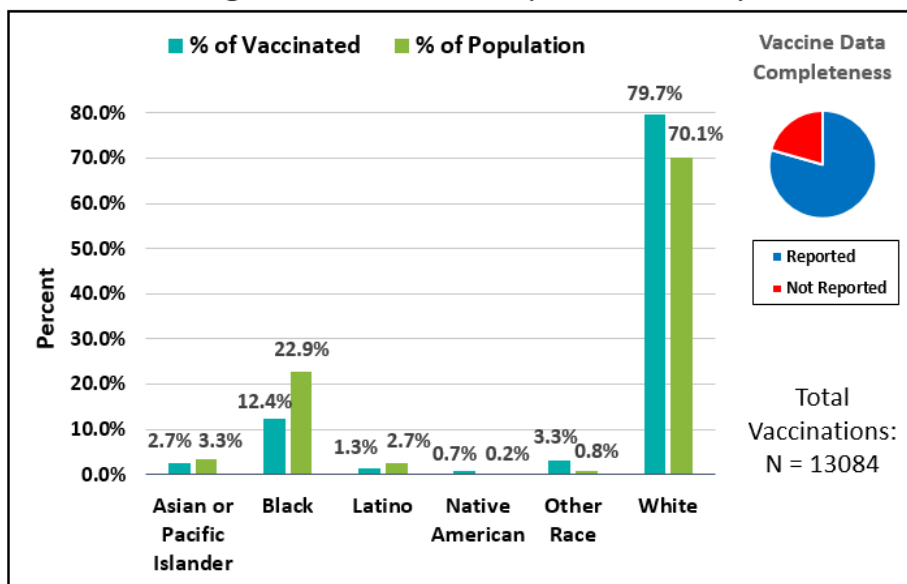
Vaccine Recipients vs. Population 75 and Over by Race/Ethnicity Percentages in Richmond – Dec 15, 2020 to Feb 21, 2021



*For race/ethnicity of vaccine recipients, "Not Reported" comprises 22.6% (n=912).

*Missing and Unknown Ethnicities were assumed to be of Non-Hispanic ethnicity.

Vaccine Recipients vs. Population 75 and Over by Race/Ethnicity Percentages in Henrico – Dec 15, 2020 to Feb 21, 2021



*For race/ethnicity of vaccine recipients, "Not Reported" comprises 21.1% (n=2756).

*Missing and Unknown Ethnicities were assumed to be of Non-Hispanic ethnicity.

7.0 APPENDIX

7.1 CENSUS POPULATION ESTIMATES BY AGE AND RACE--RICHMOND CITY AND HENRICO COUNTY

Richmond City Population Estimates by Age and Race, as of July 1, 2018 (N=228,783)					Henrico County Population Estimates by Age and Race, as of July 1, 2018 (N=329,261)				
Age group (Years)	LATINO	NH WHITE	NH BLACK	NH OTHER	Age group (Years)	LATINO	NH WHITE	NH BLACK	NH OTHER
0-9	3807	6375	13310	1232	0-9	3764	17467	11946	6531
10-19	2282	6587	13047	1554	10-19	3464	18739	13872	5470
20-29	3417	21968	18657	3146	20-29	2870	19249	15019	5142
30-39	2817	19613	14235	1897	30-39	3360	22298	13542	7601
40-49	1901	10191	10525	831	40-49	2608	22194	12532	5766
50-59	1129	10805	14747	690	50-59	1696	25701	13509	3338
60-69	525	10589	13292	574	60-69	819	23639	10596	2368
70-79	218	5457	5866	271	70-79	391	14553	5349	1147
80+	79	3599	3369	181	80+	174	9618	2487	442