

# WEEKLY CASE REPORT FOR EXTERNAL USE

MON MAR 15 - SUN MAR 21, 2021

## CONTENTS

<b>KEY TAKEAWAYS</b>	<b>2</b>
<b>1.0 COVID-19 SNAP SHOT</b>	<b>4</b>
1.1 CONFIRMED CASES, HOSPITALIZATIONS, FATALITIES, AND PROBABLE CASES BY COUNTY	4
1.2 CURRENT COVID-19 HOSPITALIZATIONS IN THE RICHMOND CATCHMENT AREA ON MARCH 22, 2021	5
<b>2.0 COVID-19 TESTING ENCOUNTERS AND POSITIVITY</b>	<b>5</b>
2.1 TESTING SUMMARY	5
<b>3.0 COVID-19 CASES</b>	<b>6</b>
3.1 SUMMARY OF CASES	6
3.2 CASE REPORTS TRENDS BY DATE (SOURCE-VDH WEBSITE)	7
3.3 CASES BY SEX BY COUNTY	8
3.4 CASES BY AGE GROUP BY COUNTY	9
3.5 CASES AND POPULATION PROPORTIONS BY RACE AND ETHNICITY BY COUNTY	10
<b>4.0 COVID-19 HOSPITALIZATIONS</b>	<b>12</b>
4.1 SUMMARY OF HOSPITALIZATIONS	12
4.2 HOSPITALIZATIONS (CONFIRMED AND PENDING) BY DAY IN THE RICHMOND CATCHMENT AREA AS OF MARCH 22, 2021	12
4.4 ICU HOSPITALIZATIONS (CONFIRMED AND PENDING) BY DAY IN THE RICHMOND CATCHMENT AREA AS OF MARCH 22, 2021	13
4.5 VENTILATOR UTILIZATIONS (PATIENTS ON VENTILATORS) BY DAY IN THE RICHMOND CATCHMENT AREA AS OF MARCH 22, 2021	13
<b>5.0 COVID-19 FATALITIES</b>	<b>14</b>
5.1 SUMMARY OF FATALITIES	14
<b>6.0 VACCINATION</b>	<b>14</b>
6.1 VACCINE SUMMARY	14
6.2 VACCINATIONS BY LOCALITY AS OF MARCH 22, 2021 - SOURCE: VDH.VIRGINIA.GOV	14
6.3 WEEKLY TOTALS BY VACCINATION PATHWAY FOR RICHMOND AND HENRICO - SOURCE: INTERNAL TRACKING, VIIS	15
6.4 VACCINE DISTRIBUTION BY DEMOGRAPHIC SUBGROUP - SOURCE: VIIS	16
<b>7.0 APPENDIX</b>	<b>20</b>
7.1 CENSUS POPULATION ESTIMATES BY AGE AND RACE--RICHMOND CITY AND HENRICO COUNTY	20

## KEY TAKEAWAYS

- According to the [VDH Pandemic Metrics Dashboard](#), the Central Region is experiencing a high burden of cases and a substantial activity level, with a fluctuating trend in cases. As of March 22, the daily **case incidence rate** in Richmond was 11.7 cases per 100,000, a slight increase from last week's rate of 11.7. Percent **positivity** for the locality is 3.6% and decreasing. In Henrico, the daily case incidence rate is 17.0 cases per 100,000, an increase from 16.1 last week, and following a fluctuating trend. Percent positivity for the locality is 5.1% and decreasing.
- **Cases** in both districts are fluctuating with minor increases compared to last week. Based on VEDSS data by date, cases in Richmond rose from a 7-day average of 11.2 to 11.7 average daily new cases per 100,000 population. In Henrico, cases have shown a slight increase from 16.1 to 17.0 new cases per day, per 100,000. **Cases** in both districts continue to decrease overall. Compared to last week, based on VEDSS data by date, cases in Richmond rose from a 7-day average of 11.2 to 11.7 average daily new cases per 100,000 population. In Henrico, cases have shown a slight increase from 16.1 to 17.0 new cases per day, per 100,000.
  - Regarding **subgroups**, in Richmond, males comprise a higher proportion of cases compared to females, based on data from the past month. Females still comprise a higher proportion of cumulative cases. In Henrico, females still comprise a higher proportion of cases, both cumulatively and in the past month, though in the last 4 weeks, the proportion of cases among males has increased. Regarding the proportion of cases by age group, 20-29 year olds continue to lead case counts in Richmond, both cumulatively and in the last 4 weeks. In Henrico, cases in the last 4 weeks are distributed fairly evenly across 20-29, 50-59, and 30-39 year olds, with 20-29 year olds holding a narrow majority of cases. Cumulatively, the proportion of cases is still highest among 20-29 year olds. Regarding race and ethnicity, in Richmond, the highest proportion of cases is still among Black individuals, again both cumulatively and in the last 4 weeks. In Henrico, both cumulatively and in the last 4 weeks, the proportion of cases is highest among White individuals.
- Among the 11 hospitals that comprise the Richmond catchment area, hospitalizations, ICU hospitalizations, and the use of ventilators are declining. All 11 hospitals are operating at a normal clinical status. Additional data at the locality level is available on the [VHD Dashboard](#). *Hospitalizations by subgroup (sex, age, and race) are reported on a monthly basis.*
- Current trends in COVID-19 deaths are decreasing overall, though Richmond saw a slight uptick in early March. Please note that trends in death data are frequently impacted by a lag in reporting. Additional death data is available on the [VHD Dashboard](#). *Deaths by subgroup (sex, age, and race) are reported on a monthly basis.*
- Richmond and Henrico Health Districts are currently in Phase 1B of **vaccination**. Eligible people include healthcare workers, people living and working in long-term care facilities, front-facing essential workers, and people over the age of 65. As of March 22, 2021, 24.1% of the region's population has received at least one dose of the vaccine. 12.2% of the region's population has been fully vaccinated. 23.3% of Richmond and Henrico's combined population has received at least one dose. 12.1% of the two districts combined population has been fully vaccinated. The majority of vaccine recipients in both districts have been female. The highest counts of vaccine recipients have been among 60-69 year olds in both districts. Available data indicate that eligible White individuals have received the majority of the vaccine, but a large percentage of recipients' race/ethnicity is still unreported.

## 1.0 COVID-19 SNAP SHOT

### 1.1 CONFIRMED CASES, HOSPITALIZATIONS, FATALITIES, AND PROBABLE CASES BY COUNTY

CASE STATUS	RICHMOND CITY	HENRICO COUNTY	VIRGINIA
New cases this week (Mar 22)	188	391	10102
All cases	15404	22542	605967
Confirmed cases	12788	16693	475385
Hospitalizations	724	911	24520
Deaths	201	493	8484
Probable cases	2616	5849	130582
Hospitalizations	16	35	1300
Deaths	35	72	1643
Case rate per 100,000	6684.7	6814	7099.4

*Weekly cases added are estimated as the difference between the cases recorded from the current and prior week*

*Case Rate per 100,000=(confirmed+probable)/population count \*100,000.*

*Population estimates for the case rate are the most recent as of July 1, 2019 from the [U.S Census Bureau QuickFacts](#)*

## 1.2 CURRENT COVID-19 HOSPITALIZATIONS IN THE RICHMOND CATCHMENT AREA ON MARCH 22, 2021

The data included in this section comes from VHASS and it includes data from the following hospitals: VCU Health System, Retreat Doctors', Bon Secours Community, CWJ Chippenham, CWJ Johnson Willis, VA Medical Center, Bon Secours St. Mary's, Henrico Doctors, and Parham Doctors, Bon Secours St. Francis, and Memorial Regional Medical Center.

	TOTAL IN USE FOR COVID-19	CURRENTLY AVAILABLE
Confirmed Hospitalizations	191	133
Pending Hospitalizations	18	
Confirmed - ICU	35	38
Pending - ICU	5	
Confirmed - Ventilators	23	304
Pending - Ventilators	*	

\*Counts <5 have been suppressed

Within these 11 hospitals that comprise the Richmond catchment area, there are currently available adult ICU beds, and 304 available ventilators. Based on the VHASS hospital dashboard on March 22, 2021, all 11 hospitals are operating at normal clinical status.\*\*

\*\*A clinical status of "normal" indicates that hospital clinical resources are operating within normal conditions. A clinical status of "full" indicates that hospital clinical resources are exceeded and acceptable care cannot be provided to additional patients. Diversion or Community surge response is required.

## 2.0 COVID-19 TESTING ENCOUNTERS AND POSITIVITY

### 2.1 TESTING SUMMARY

Total tests by testing modality and the associated 7-day average in percent positivity are summarized in the table below. Data are from from the [VDH public dashboard](#) on March 22, 2021.

	RICHMOND CITY		HENRICO COUNTY	
	Tests	Positivity	Tests	Positivity
PCR*	223,157	3.6%	319,168	5.1%
Antigen	35,798	4.5%	78,301	6.2%
Total (PCR, antigen, and antibody)	263,198	4.1%	406,174	5.8%

\*All testing metrics included in previous reports have been based on PCR tests

### **3.0 COVID-19 CASES**

#### **3.1 SUMMARY OF CASES**

##### **Cases**

Cases in both districts are fluctuating with minor increases compared to last week. Based on VEDSS data by date, cases in Richmond rose from a 7-day average of 11.2 to 11.7 average daily new cases per 100,000 population. In Henrico, cases have shown a slight increase from 16.1 to 17.0 new cases per day, per 100,000.

##### **Case Demographics**

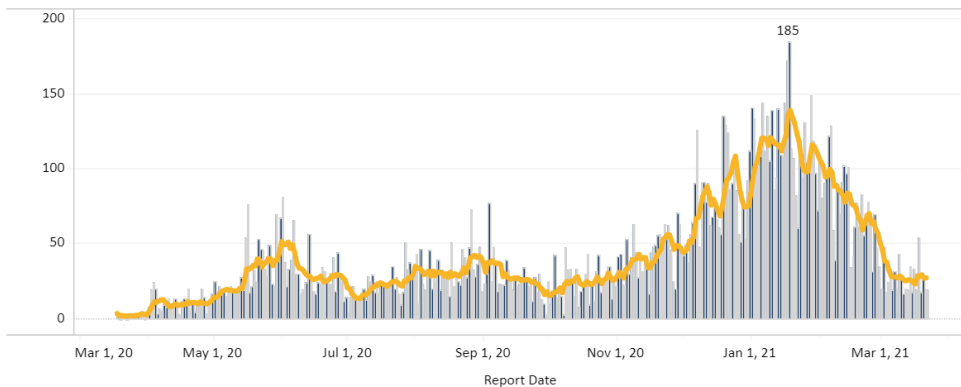
In Richmond, males comprise a higher proportion of cases compared to females, based on data from the past month. Females still comprise a higher proportion of cumulative cases. In Henrico, females still comprise a higher proportion of cases, both cumulatively and in the past month, though in the last 4 weeks, the proportion of cases among males has increased. Regarding the proportion of cases by age group, 20-29 year olds continue to lead case counts in Richmond, both cumulatively and in the last 4 weeks. In Henrico, cases in the last 4 weeks are distributed fairly evenly across 20-29, 50-59, and 30-39 year olds, with 20-29 year olds holding a narrow majority of cases. Cumulatively, the proportion of cases is still highest among 20-29 year olds. Regarding race and ethnicity, in Richmond, the highest proportion of cases is still among Black individuals, again both cumulatively and in the last 4 weeks. In Henrico, both cumulatively and in the last 4 weeks, the proportion of cases is highest among White individuals.

### 3.2 CASE REPORTS TRENDS BY DATE (SOURCE-VDH WEBSITE)

*The report date corresponds to the date the case count was reported publicly. The report date does not have any equivalent variable in VEDSS, and cannot be directly linked to case-specific dates (e.g., event dates or lab report dates). Case counts by report date are estimated by subtracting the cumulative cases on the previous day from that of the current day. The 7-day moving average is a recurrent average of the number of cases for each 7-day data sequence.*

Number of New Cases Reported <sup>^</sup>	7-Day Average Number of Daily New Cases Reported	7-Day Average Number of New Daily Cases Reported, Rate per 100,000 Population	Total Number of New Cases per 100,000 Population within last 14 days
<b>19</b>	<b>27</b>	<b>11.7</b>	<b>159.1</b>

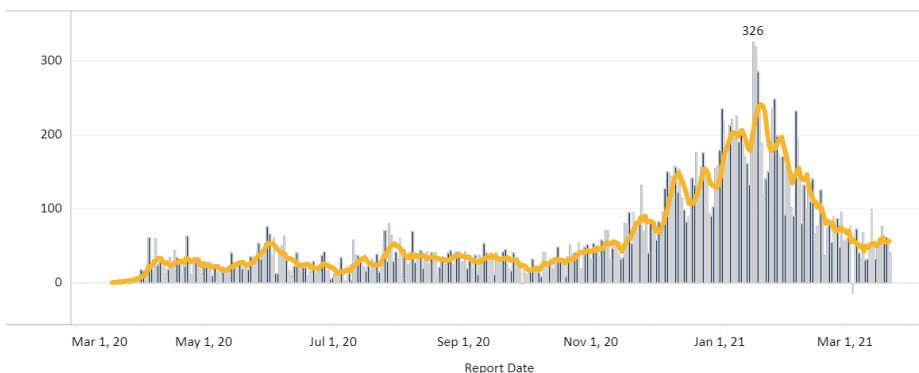
Report Date Daily Cases Counts - Richmond City



- In Richmond, the 7-day average number of daily new cases reported this week appears to be decreasing over the last few weeks. A total of 19 new cases were reported on March 21, 2021, with a 7-day average of 11.7 new daily cases per 100,000 population.

Number of New Cases Reported <sup>^</sup>	7-Day Average Number of Daily New Cases Reported	7-Day Average Number of New Daily Cases Reported, Rate per 100,000 Population	Total Number of New Cases per 100,000 Population within last 14 days
<b>41</b>	<b>56</b>	<b>17.0</b>	<b>231.4</b>

Report Date Daily Cases Counts - Henrico

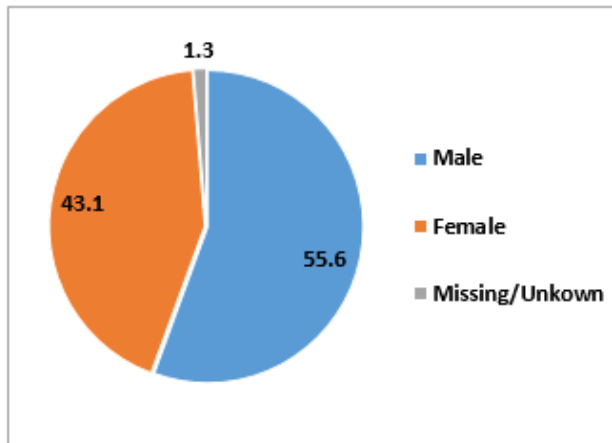


- In Henrico, new cases reported per day also appear to be decreasing. A total of 41 new cases were reported on March 21, 2021 with a 7-day average of 17 daily cases per 100,000 population.

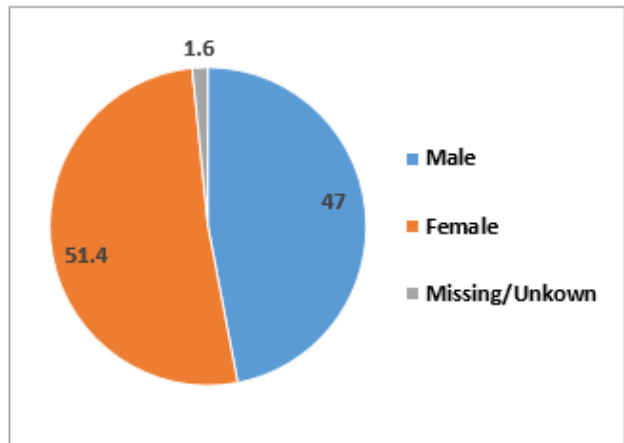
### 3.3 CASES BY SEX BY COUNTY

*All percentages are based on overall case distribution, rather than the proportion of known cases for each measure, and therefore may not correspond directly with VDH percentages.*

**COVID-19 case distribution by Sex in the last 4 weeks  
(Feb 15 – Mar 21, 2021)—Richmond City, VA (N=1128)**

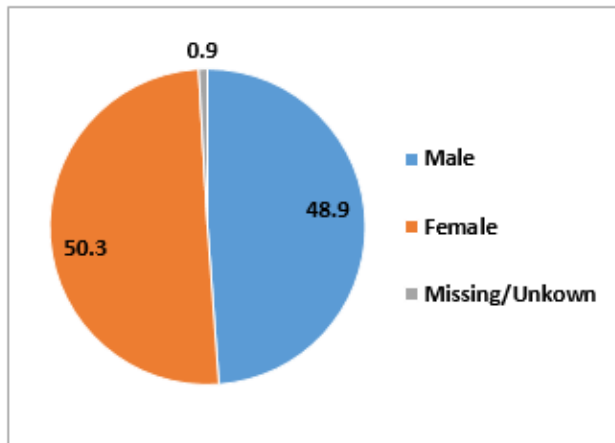


**Cumulative COVID-19 case distribution by Sex as of  
March 21, 2021 —Richmond City, VA (n= 15404)**

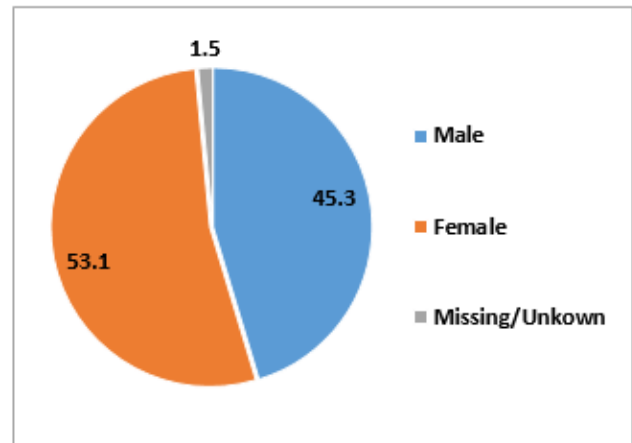


- In Richmond, males now comprise a higher proportion of cases relative to females in the last 4 weeks (55.6% vs 43.1%), but females comprise a higher proportion cumulatively (51.4% vs 47%).

**COVID-19 case distribution by Sex in the last 4 weeks  
(Feb 15 – Mar 21, 2021)— Henrico County, VA (N=1745)**



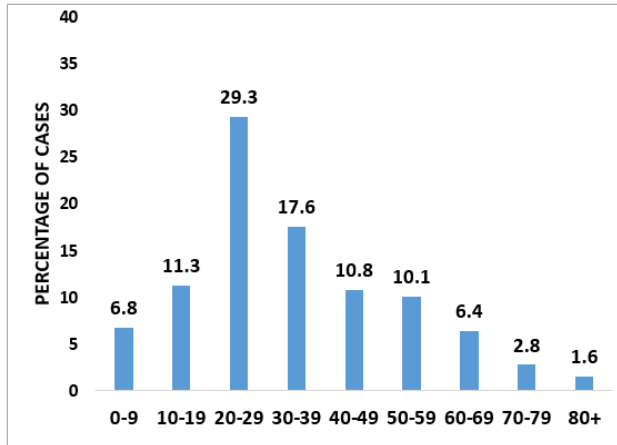
**COVID-19 cases by Sex as of March 21, 2021  
—Henrico County, VA (n=22542)**



- In Henrico, females comprise a much higher proportion of cases relative to males both in the last 4 weeks (50.3% vs 48.9%) as well as cumulatively (53.1% vs 45.3%).

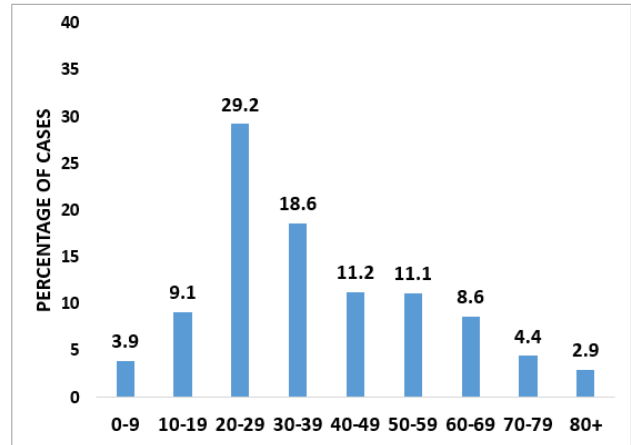
### 3.4 CASES BY AGE GROUP BY COUNTY

**COVID-19 case distribution by Age in the last 4 weeks (Feb 15 – Mar 21, 2021)—Richmond City, VA (N=1128)**



Age is missing for 3.4% (n=38) cases

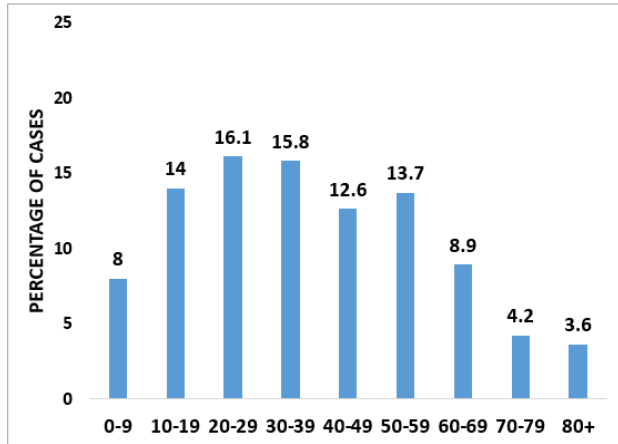
**Cumulative COVID-19 case distribution by Age as of March 21, 2021 —Richmond City, VA (n= 15404)**



Age is missing for 1.1% (n=174) cases

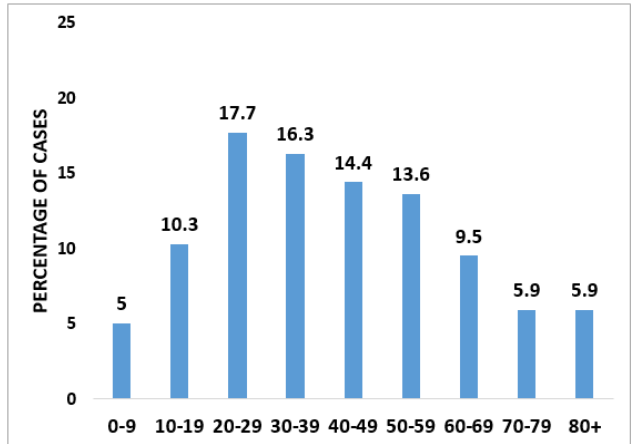
- In Richmond, individuals aged 20-29 (29.3%) still comprise the overwhelmingly highest number of cases in the last four weeks, followed by individuals aged 30-39 years (17.6%).

**COVID-19 case distribution by Age in the last 4 weeks (Feb 15 – Mar 21, 2021)— Henrico County, VA (N=1745)**



Age is missing for 3.2% (n=55) cases

**COVID-19 cases by Age as of March 21, 2021 —Henrico County, VA (n=22542)**



Age is missing for 1.4% (n=313) cases

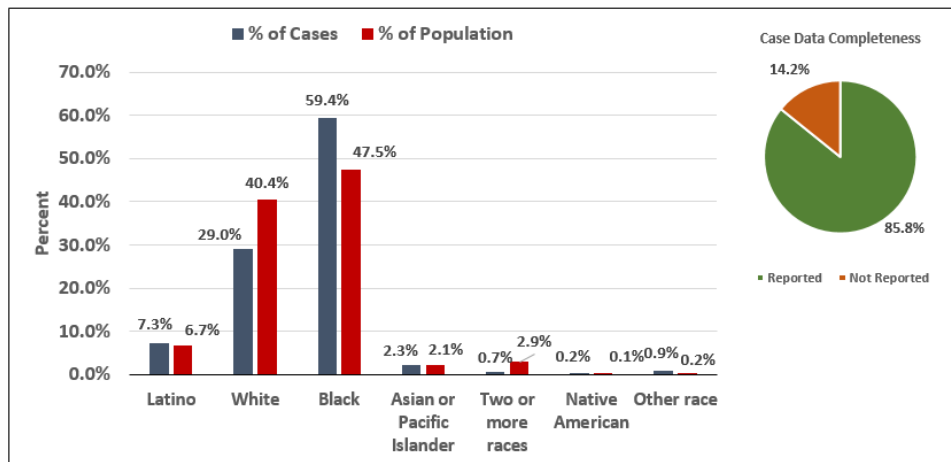
- In Henrico, individuals aged 20-29 (16.1%) comprise the highest number of cases followed by individuals aged 30-39 (15.8%) in the last four weeks.



### 3.5 CASES AND POPULATION PROPORTIONS BY RACE AND ETHNICITY BY COUNTY

Population estimates for the Race and Ethnicity subgroup analyses are from the [2018 ACS 5-year estimates](#)

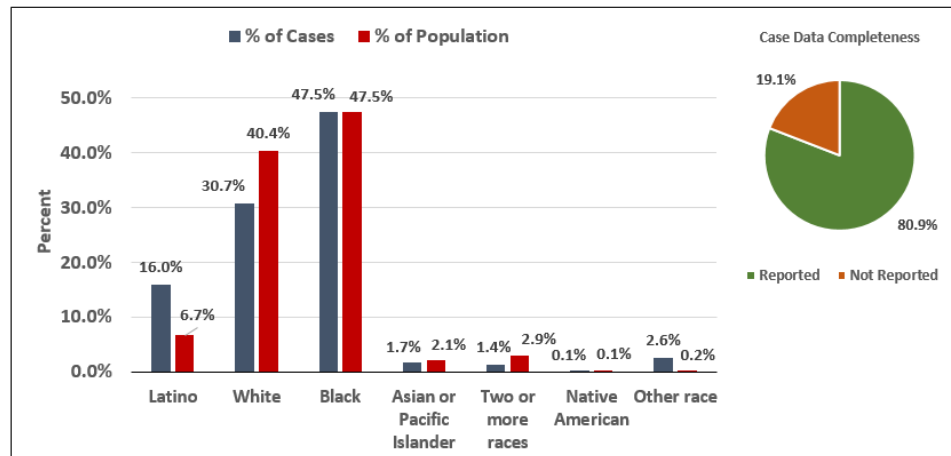
**COVID-19 case distribution by Race and Ethnicity in the last 4 weeks  
(Feb 15 – Mar 21, 2021)—Richmond City, VA (N=1128)**



\*For race/ethnicity identification among cases, "Not Reported" comprises 14.2% (n=160).

\*Missing and Unknown Ethnicities were assumed to be of Non-Hispanic ethnicity

**Cumulative COVID-19 case distribution by Race and Ethnicity  
as of March 21, 2021 —Richmond City, VA (n= 15404)**

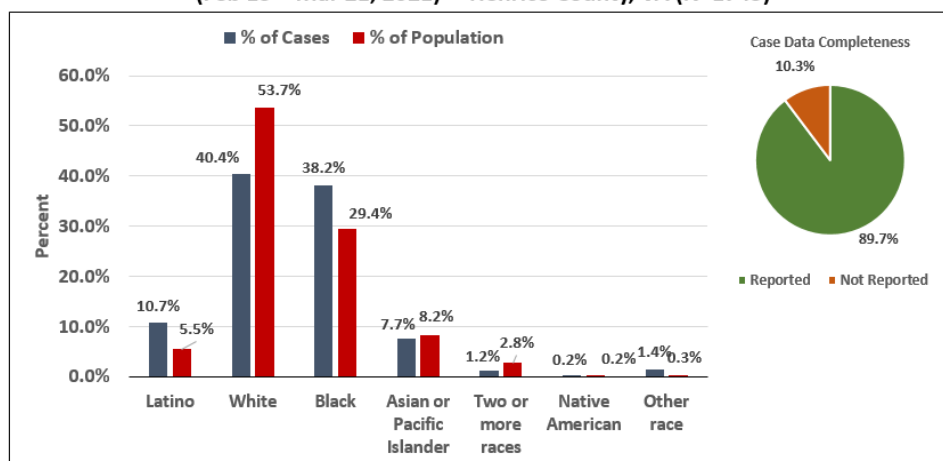


\*For race/ethnicity identification among cases, "Not Reported" comprises 19.1% (n=2949).

\*Missing and Unknown Ethnicities were assumed to be of Non-Hispanic ethnicity

- In Richmond, the case burden for Black individuals over the last 4 weeks (59.4%) is disproportionately high relative to their population percentage (47.5%), while the case burden for White individuals is disproportionately low, both in the last four weeks (29%) and cumulatively (30.7%) relative to their population percentage (40.4%). While the cumulative case burden for Latino individuals (16.0%) is disproportionately high compared to their population percentage (6.7%), the case burden over the last four weeks for Latino individuals has been much lower (7.3%).

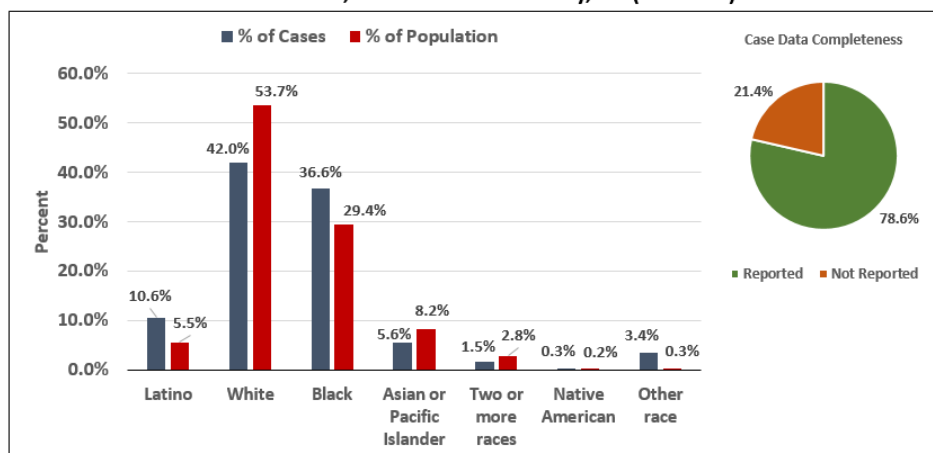
**COVID-19 case distribution by Race and Ethnicity in the last 4 weeks  
(Feb 15 – Mar 21, 2021)— Henrico County, VA (N=1745)**



\*For race/ethnicity identification among cases, "Not Reported" comprises 10.3% (n=180).

\*Missing and Unknown Ethnicities were assumed to be of Non-Hispanic ethnicity

**Cumulative COVID-19 case distribution by Race and Ethnicity as  
of March 21, 2021—Henrico County, VA (n=22542)**



\*For race/ethnicity identification among cases, "Not Reported" comprises 21.4% (n=4824).

\*Missing and Unknown Ethnicities were assumed to be of Non-Hispanic ethnicity

- In Henrico, the case burden for Black individuals over the last 4 weeks (38.2%) and cumulatively (36.6%) is disproportionately high relative to their population percentage (29.4%). The case burden for White individuals has been disproportionately low over the last four weeks (40.4%) and cumulatively (42.0%) relative to their population percentage (53.7%). While the cumulative case burden for Latino individuals (10.6%) is disproportionately high compared to their population percentage (5.5%), additionally, the case burden for Latino individuals over the last four weeks has been (10.7%).

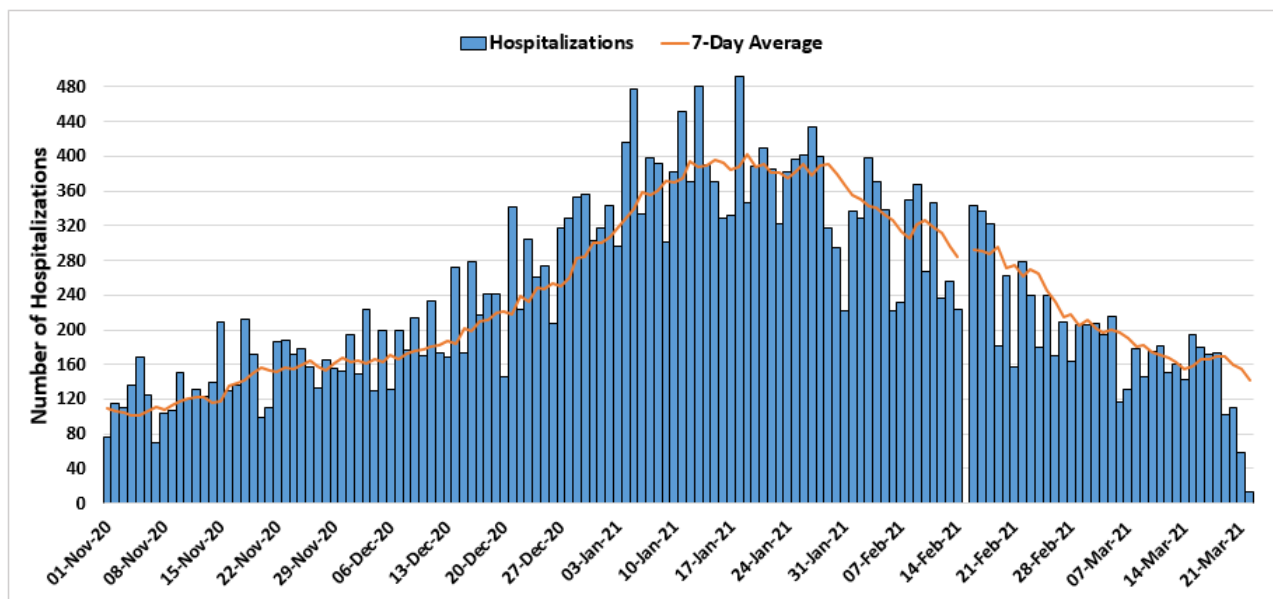
## 4.0 COVID-19 HOSPITALIZATIONS

### 4.1 SUMMARY OF HOSPITALIZATIONS

Based on VEDSS data, hospitalizations among Richmond and Henrico patients are fluctuating (see [VDH Dashboard](#) for additional trend data). Looking more broadly at the 11 hospitals that comprise the Richmond catchment area, hospitalizations, ICU hospitalizations, and the use of ventilators are declining. All 11 hospitals are operating at a normal clinical status. *Hospitalizations by subgroup (sex, age, and race) are reported on a monthly basis.*

### 4.2 HOSPITALIZATIONS (CONFIRMED AND PENDING) BY DAY IN THE RICHMOND CATCHMENT AREA AS OF MARCH 22, 2021

Total Daily COVID-19 Hospitalizations, November 1<sup>st</sup>, 2020 – March 22<sup>nd</sup>, 2021  
Richmond Catchment Area (37282 of 73955)



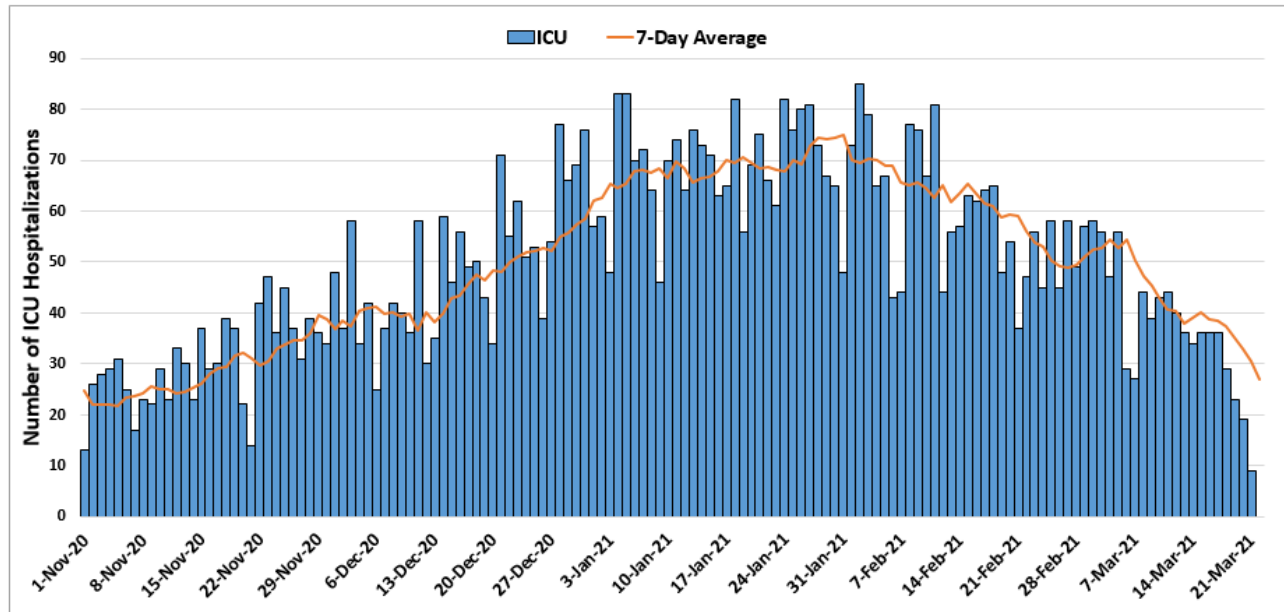
\* Data points from March until October 31<sup>st</sup> are excluded to allow for clarity in trends/patterns

\* Data points from February 15<sup>th</sup>, 2021 were omitted due to issues with data quality

- Data from the 11 hospitals included in this analysis has shown an overall downward trend since a peak in January. This downward trend has been consistent, despite minor fluctuations throughout February and early March.

#### 4.4 ICU HOSPITALIZATIONS (CONFIRMED AND PENDING) BY DAY IN THE RICHMOND CATCHMENT AREA AS OF MARCH 22, 2021

Total Daily COVID-19 ICU Hospitalizations, November 1<sup>st</sup>, 2020 – March 22<sup>nd</sup>, 2021  
Richmond Catchment Area (7021 of 15858)

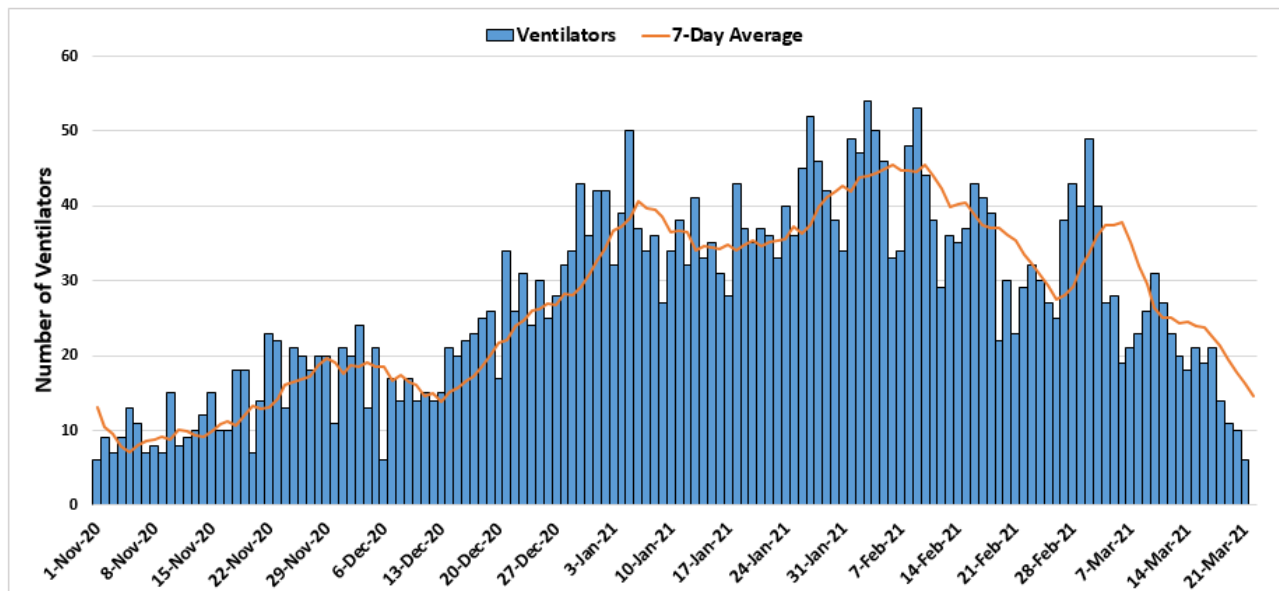


\* Data points from March until October 31<sup>st</sup> are excluded to allow for clarity in trends/patterns

- Following a recent peak and mild fluctuations during the month of January through late February, ICU hospitalizations have generally been decreasing throughout the month of March.

#### 4.5 VENTILATOR UTILIZATIONS (PATIENTS ON VENTILATORS) BY DAY IN THE RICHMOND CATCHMENT AREA AS OF MARCH 22, 2021

Total Daily COVID-19 Ventilator Utilizations, November 1<sup>st</sup>, 2020 – March 22<sup>nd</sup>, 2021  
Richmond Catchment Area (3813 of 7839)



• Data points from March until October 31<sup>st</sup> are excluded to allow for clarity in trends/patterns

- Ventilator utilization fluctuated throughout December, and despite peaks towards the end of January and February, it appears to be decreasing overall during the month of March.

## 5.0 COVID-19 FATALITIES

### 5.1 SUMMARY OF FATALITIES

Current trends in COVID-19 deaths are decreasing overall, though Richmond saw a slight uptick in early March. Please note that trends in death data are frequently impacted by a lag in reporting. Additional death data is available on the [VHD Dashboard](#). *Deaths by subgroup (sex, age, and race) are reported on a monthly basis.*

## 6.0 VACCINATION

### 6.1 VACCINE SUMMARY

Richmond and Henrico Health Districts are currently in Phase 1B of vaccination. Eligible people include healthcare workers, people living and working in long-term care facilities, front-facing essential workers, and people over the age of 65. Vaccine supply and distribution are summarized in the tables below.

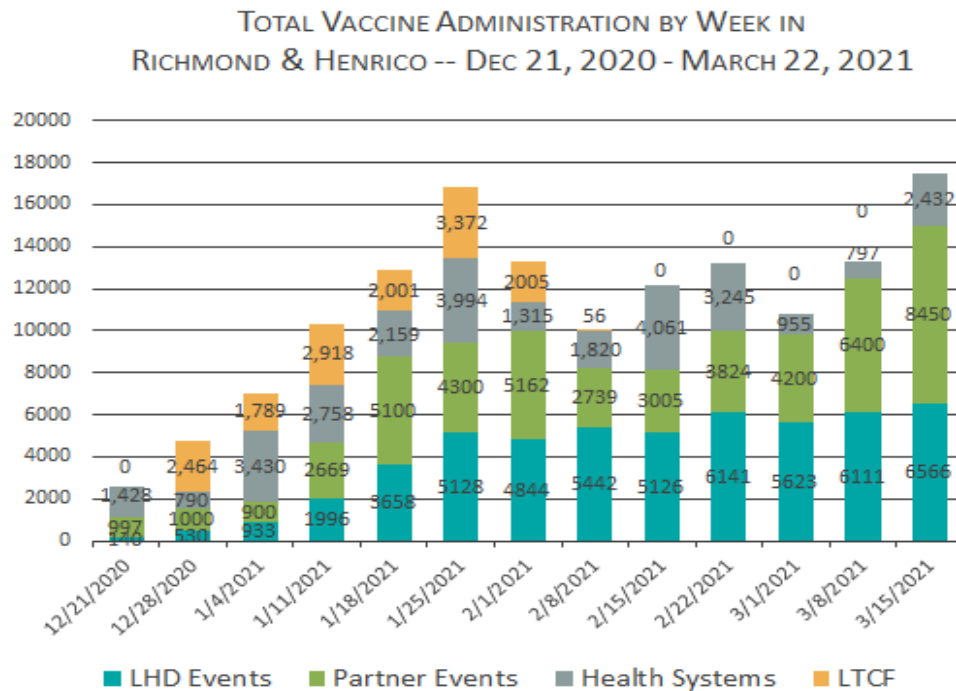
As of March 22, 2021, 24.1% of the region's population has received at least one dose of the vaccine. 12.2% of the region's population has been fully vaccinated. 23.3% of Richmond and Henrico's combined population has received at least one dose. 12.1% of the two districts combined population has been fully vaccinated. The majority of vaccine recipients in both districts have been female. The highest counts of vaccine recipients have been among 60-69 year olds in both districts. Available data indicate that eligible White individuals have received the majority of the vaccine, but a large percentage of recipients' race/ethnicity is still unreported.

### 6.2 VACCINATIONS BY LOCALITY AS OF MARCH 22, 2021 - SOURCE: [VDH.VIRGINIA.GOV](https://www.vdh.virginia.gov)

HEALTH DISTRICT	LOCALITY	POPULATION	FIRST DOSES ADMINISTERED	SECOND DOSES ADMINISTERED
Chesterfield	Chesterfield	352,802	82,893	39,379
	Colonial Heights	17,428	3,644	1,661
	Powhatan	28,815	7,272	3,412
Chickahominy	Charles City	6,963	2,085	1,215
	Goochland	23,753	8,219	4,566
	Hanover	107,766	29,375	15,801
	New Kent	23,091	6,041	3,476
Henrico	Henrico	330,818	82,825	42,562
Richmond	Richmond City	226,622	47,160	24,680
<b>Total</b>		<b>1,118,058</b>	<b>269,514</b>	<b>136,752</b>

We have set a goal of vaccinating 75% of the population to reach herd immunity. First and second doses of the Pfizer vaccine must be administered at least 21 days apart. First and second doses of the Moderna vaccine must be administered at least 28 days apart. People who received the Johnson & Johnson vaccine, which is a single dose, are included in the count of first doses administered.

### 6.3 WEEKLY TOTALS BY VACCINATION PATHWAY FOR RICHMOND AND HENRICO - SOURCE: INTERNAL TRACKING, VIIS

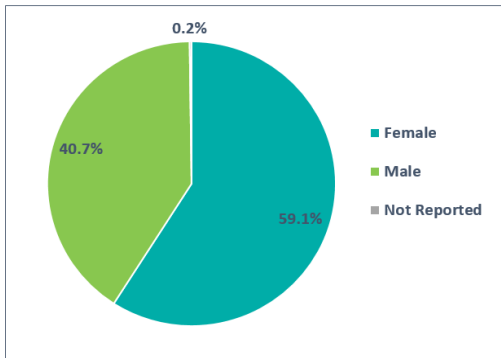


\*Changes in past weeks' values reflect resolution of data quality issues.

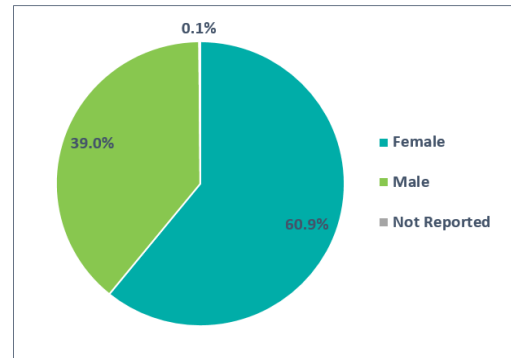
Health system totals reflect Richmond and Henrico residents who were vaccinated at one of the hospitals in the Richmond hospital catchment area - VCU Health System, Retreat Doctors', Bon Secours Community, CWJ Chippenham, CWJ Johnson Willis, Bon Secours St. Mary's, Henrico Doctors, and Parham Doctors, Bon Secours St. Francis, and Memorial Regional Medical Center. VA Medical Center is included in the COVID-19 hospitalization section of this report but vaccination data for this hospital is not yet available in VIIS.

## 6.4 VACCINE DISTRIBUTION BY DEMOGRAPHIC SUBGROUP - SOURCE: VIIS

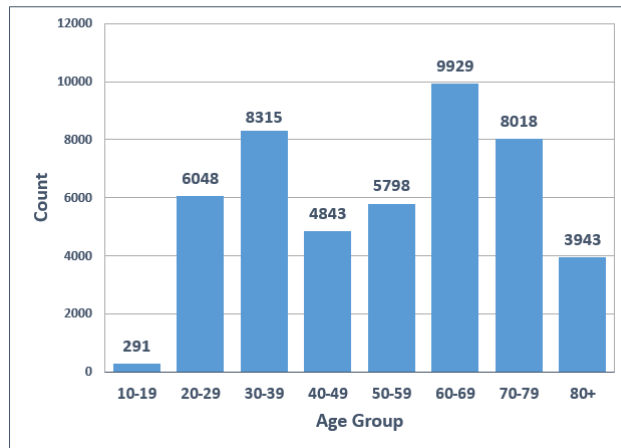
**Total Vaccine Recipients by Sex in Richmond**  
-- March 22, 2021 (N = 47185)



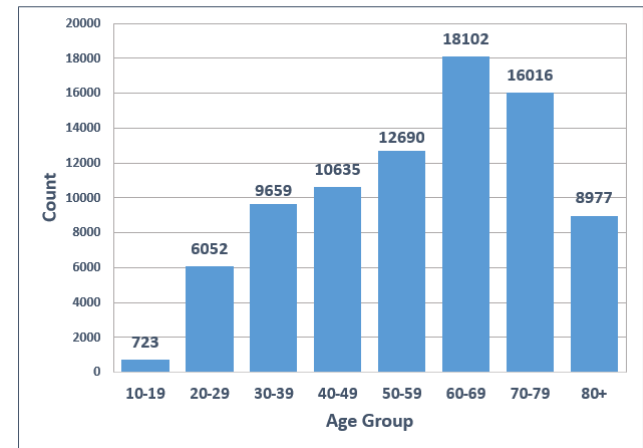
**Total Vaccine Recipients by Sex in Henrico**  
-- March 22, 2021 (N = 82854)



**Total Vaccine Recipients by Age Group in Richmond**  
-- March 22, 2021 (N = 47185)

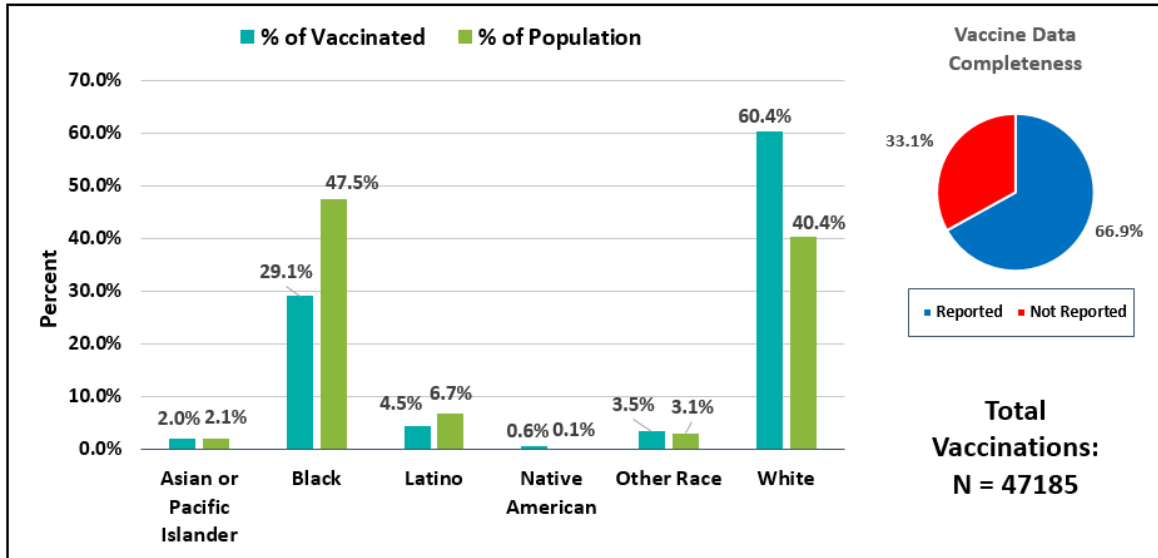


**Total Vaccine Recipients by Age Group in Henrico**  
-- March 22, 2021 (N = 82854)



The following charts compare the percentage breakdown of racial or ethnic identification of vaccinated individuals to the expected percentage breakdown of the racial or ethnic identification of the population. A notable discrepancy can be seen when looking at Black individuals, who comprise 47.5% of the Richmond population and 29.4% of the Henrico population yet only 29.1% of vaccine recipients in Richmond and 19.6% of vaccine recipients in Henrico.

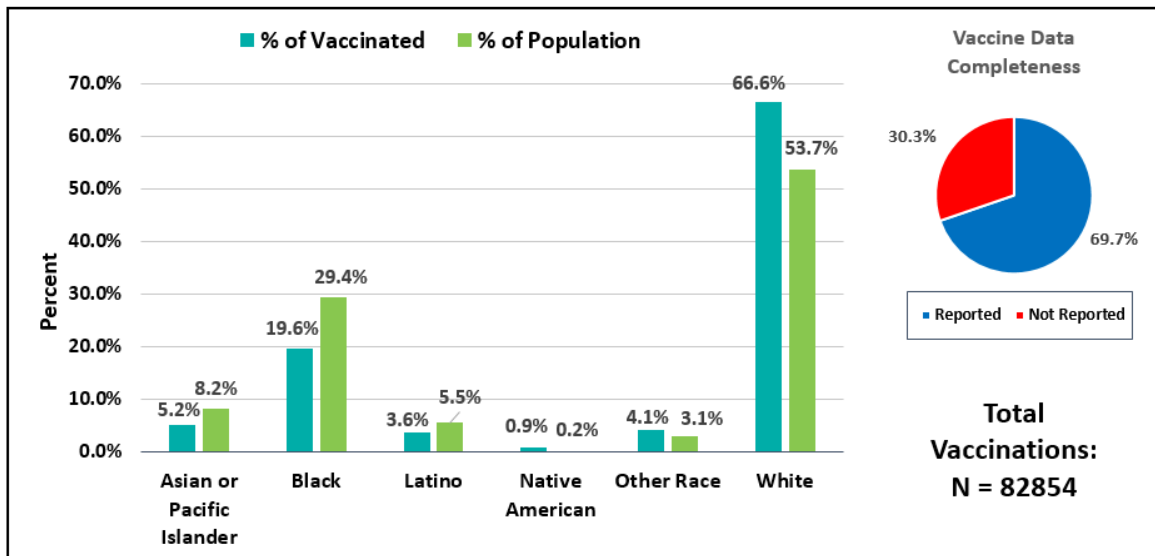
### Vaccine Recipients vs. Population by Race/Ethnicity Percentages in Richmond – Dec 15, 2020 to Mar 22, 2021



\*For race/ethnicity of vaccine recipients, "Not Reported" comprises 33.1% (n=15597).

\*Missing and Unknown Ethnicities were assumed to be of Non-Hispanic ethnicity.

### Vaccine Recipients vs. Population by Race/Ethnicity Percentages in Henrico – Dec 15, 2020 to Mar 22, 2021



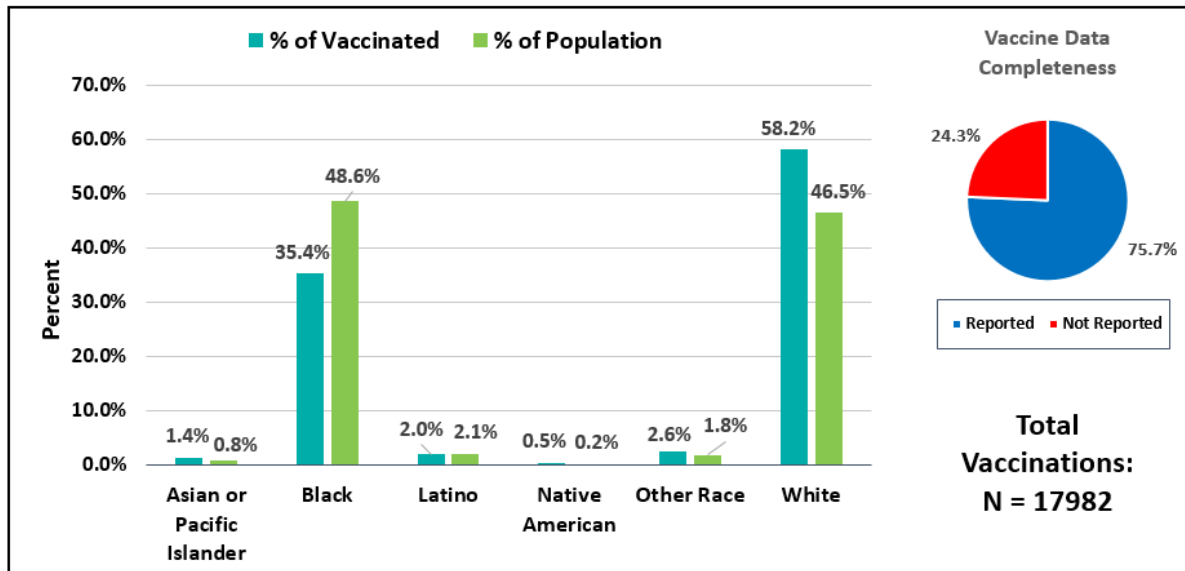
\*For race/ethnicity of vaccine recipients, "Not Reported" comprises 30.3% (n=25084).

\*Missing and Unknown Ethnicities were assumed to be of Non-Hispanic ethnicity.

The figures below compare the percentage breakdown by race and ethnicity specifically for individuals 65 and over. In Richmond City, Black individuals comprise 48.6% of the population of those aged 65 years and older, yet make up only 35.4% of vaccine recipients. This discrepancy can also be noted in Henrico, where Black individuals make up 25.6% of the population, yet thus far have only comprised 18.9% of vaccine recipients.



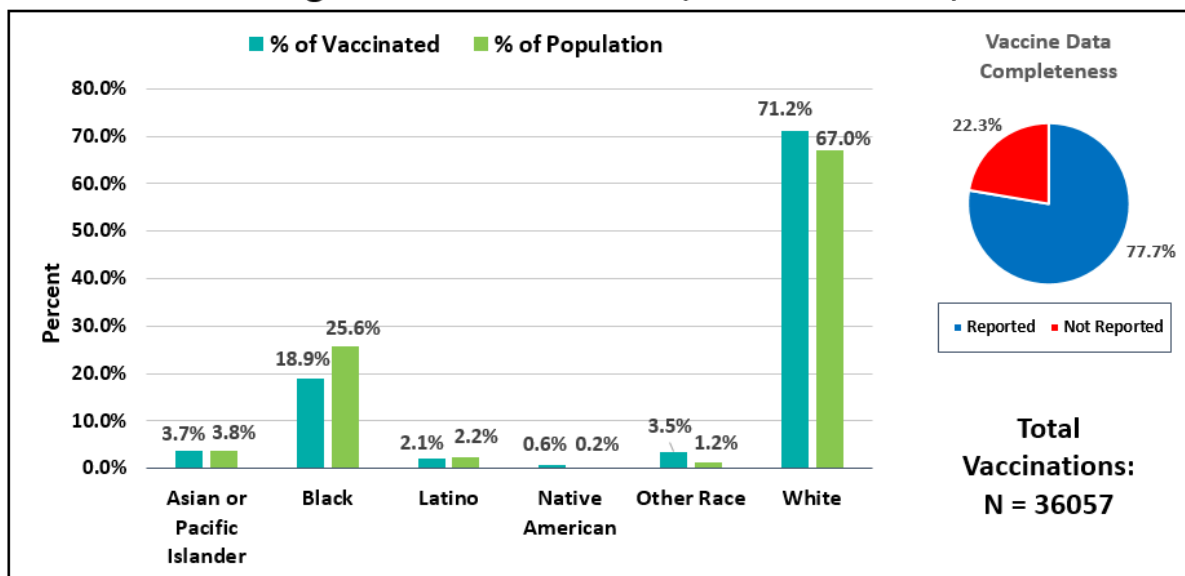
## Vaccine Recipients vs. Population 65 and Over by Race/Ethnicity Percentages in Richmond – Dec 15, 2020 to Mar 22, 2021



\*For race/ethnicity of vaccine recipients, "Not Reported" comprises 23.6% (n=4240).

\*Missing and Unknown Ethnicities were assumed to be of Non-Hispanic ethnicity.

## Vaccine Recipients vs. Population 65 and Over by Race/Ethnicity Percentages in Henrico – Dec 15, 2020 to Mar 22, 2021

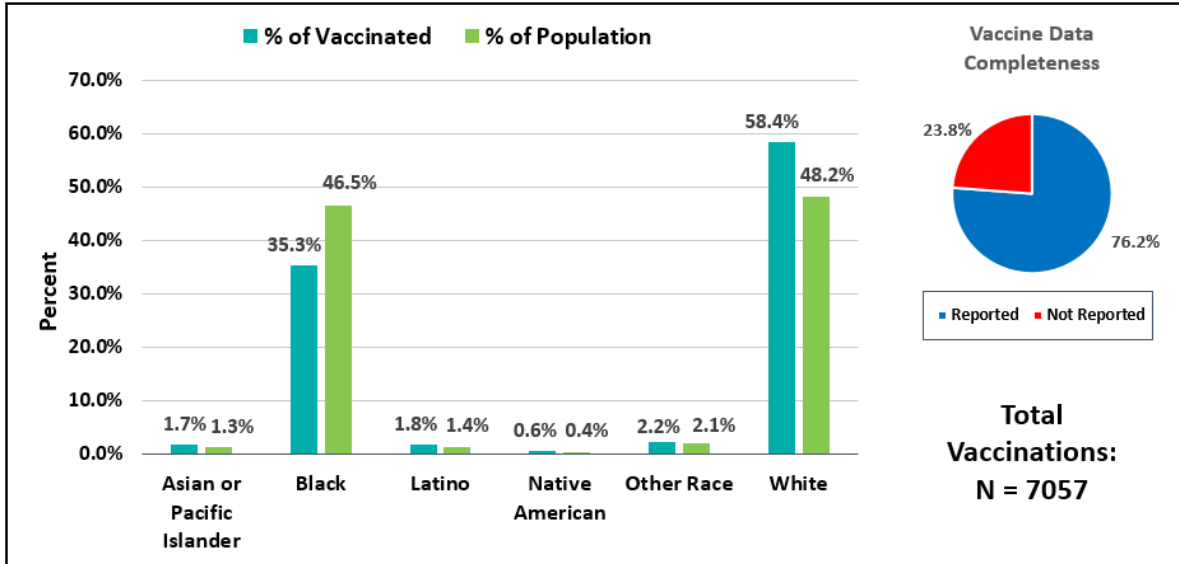


\*For race/ethnicity of vaccine recipients, "Not Reported" comprises 21.7% (n=7836).

\*Missing and Unknown Ethnicities were assumed to be of Non-Hispanic ethnicity.

The below metrics pertain to individuals aged 75 and older. In Richmond, there is a notable discrepancy wherein Black individuals comprise 46.5% of the Richmond population aged 75 years and older but only 35.3% of vaccine recipients. In Henrico, Black individuals comprise 22.9% of the population aged 75 years and older, but only make up 15.6% of vaccine recipients.

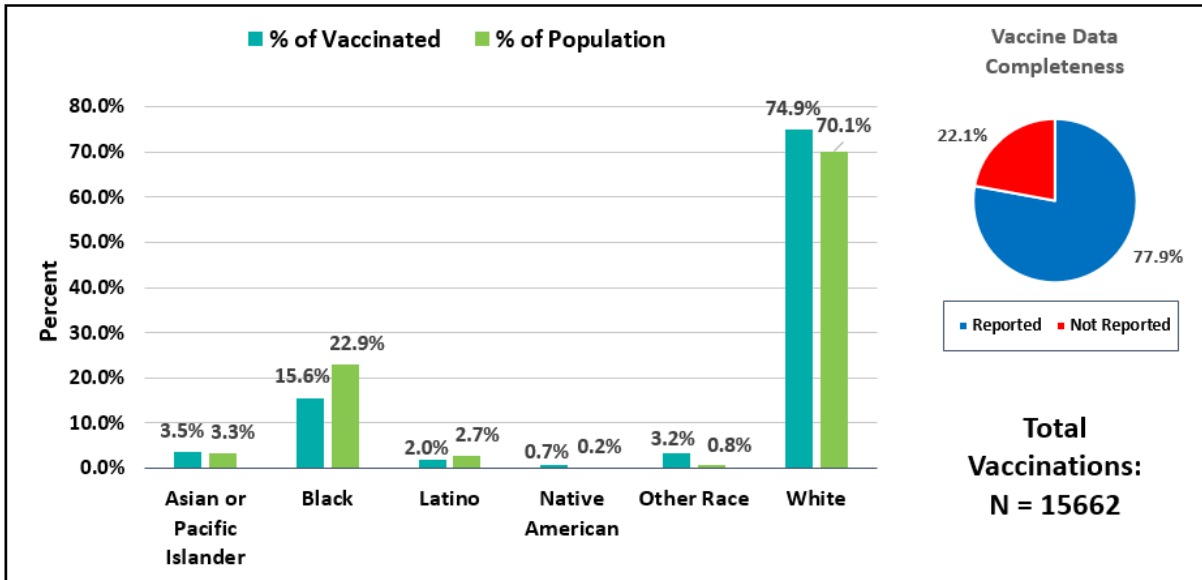
### Vaccine Recipients vs. Population 75 and Over by Race/Ethnicity Percentages in Richmond – Dec 15, 2020 to Mar 22, 2021



\*For race/ethnicity of vaccine recipients, "Not Reported" comprises 22.1% (n=1557).

\*Missing and Unknown Ethnicities were assumed to be of Non-Hispanic ethnicity.

### Vaccine Recipients vs. Population 75 and Over by Race/Ethnicity Percentages in Henrico – Dec 15, 2020 to Mar 22, 2021



\*For race/ethnicity of vaccine recipients, "Not Reported" comprises 19.9% (n=3122).

\*Missing and Unknown Ethnicities were assumed to be of Non-Hispanic ethnicity.

## 7.0 APPENDIX

### 7.1 CENSUS POPULATION ESTIMATES BY AGE AND RACE--RICHMOND CITY AND HENRICO COUNTY

Richmond City Population Estimates by Age and Race, as of July 1, 2018 (N=228,783)					Henrico County Population Estimates by Age and Race, as of July 1, 2018 (N=329,261)				
Age group (Years)	LATINO	NH WHITE	NH BLACK	NH OTHER	Age group (Years)	LATINO	NH WHITE	NH BLACK	NH OTHER
0-9	3807	6375	13310	1232	0-9	3764	17467	11946	6531
10-19	2282	6587	13047	1554	10-19	3464	18739	13872	5470
20-29	3417	21968	18657	3146	20-29	2870	19249	15019	5142
30-39	2817	19613	14235	1897	30-39	3360	22298	13542	7601
40-49	1901	10191	10525	831	40-49	2608	22194	12532	5766
50-59	1129	10805	14747	690	50-59	1696	25701	13509	3338
60-69	525	10589	13292	574	60-69	819	23639	10596	2368
70-79	218	5457	5866	271	70-79	391	14553	5349	1147
80+	79	3599	3369	181	80+	174	9618	2487	442