

WEEKLY CASE REPORT FOR EXTERNAL USE

MONTH OF FEB (1-28, 2021)

CONTENTS

KEY TAKEAWAYS	3
1.0 COVID-19 SNAP SHOT	5
1.1 CONFIRMED CASES, HOSPITALIZATIONS, FATALITIES, AND PROBABLE CASES BY COUNTY	5
1.2 CURRENT COVID-19 HOSPITALIZATIONS IN THE RICHMOND CATCHMENT AREA ON MARCH 1, 2021	5
2.0 COVID-19 TESTING ENCOUNTERS AND POSITIVITY	6
2.1 TESTING SUMMARY	6
2.2 NUMBER OF PCR TESTS RELATIVE TO STATEWIDE TESTING GOAL	7
3.0 COVID-19 CASES	7
3.1 SUMMARY OF CASES	7
3.2 CASE REPORTS TRENDS BY DATE (SOURCE-VDH WEBSITE)	8
3.3 CASES BY SEX BY COUNTY	9
3.4 CASES BY AGE GROUP BY COUNTY	10
3.6 CASES AND POPULATION PROPORTIONS BY RACE AND ETHNICITY BY COUNTY	11
3.7 CONFIRMED AND PROBABLE CASE RATES BY COUNTY	12
4.0 COVID-19 HOSPITALIZATIONS	13
4.1 SUMMARY OF HOSPITALIZATION	13
4.2 HOSPITALIZATIONS (CONFIRMED AND PENDING) BY DAY IN THE RICHMOND CATCHMENT AREA AS OF FEBRUARY 28, 2021	14
4.3 ICU HOSPITALIZATIONS (CONFIRMED AND PENDING) BY DAY IN THE RICHMOND CATCHMENT AREA AS OF FEBRUARY 28, 2021	15
4.4 VENTILATOR UTILIZATIONS (PATIENTS ON VENTILATORS) BY DAY IN RICHMOND CATCHMENT AREA AS OF FEBRUARY 28, 2021	16
4.5 HOSPITALIZATIONS BY SEX, RACE, AND AGE BY COUNTY	16
5.0 COVID-19 FATALITIES	17
5.1 SUMMARY OF FATALITIES	17
5.3 DEATHS BY SEX, RACE, AND AGE BY COUNTY	17
6.0 VACCINATION	17
6.1 VACCINE SUMMARY	17
6.2 VACCINATIONS BY LOCALITY AS OF MARCH 1, 2021 - SOURCE: VDH.VIRGINIA.GOV	18
6.3 WEEKLY TOTALS BY VACCINATION PATHWAY FOR RICHMOND AND HENRICO - SOURCE: INTERNAL TRACKING, VIIS	19

6.4 VACCINE DISTRIBUTION BY ELIGIBLE POPULATION IN RICHMOND & HENRICO - SOURCES: INTERNAL TRACKING	20
6.5 VACCINE DISTRIBUTION BY DEMOGRAPHIC SUBGROUP - SOURCE: VIIS	20
7.0 APPENDIX	25
7.1 CENSUS POPULATION ESTIMATES BY AGE AND RACE--RICHMOND CITY AND HENRICO COUNTY	25
7.2 VHASS HOSPITALIZATION MEASURES - FULL DATA RANGE - MARCH 14 - PRESENT	25

KEY TAKEAWAYS

- According to the [VDH Pandemic Metrics Dashboard](#), the Central Region is still experiencing a high burden of cases and a substantial activity level, but with a decreasing trend in cases. As of March 1, the daily case incidence rate in Richmond was 21.9 cases per 100,000, a decrease from last week's rate of 27.6. Percent **positivity** for the locality is 6.0% and decreasing. In Henrico, the daily case incidence rate is 21.5 cases per 100,000, a decrease from last week's rate of 24.2. Percent **positivity** for the locality is 6.8% and decreasing.
- Consistent with the Pandemic Metrics Dashboard, the number of **PCR tests** administered across providers has also dropped notably in both districts in the last month, compared to the preceding three months.
- **Cases** in both districts continue to fall. Compared to last week, based on VEDSS data by date, cases in Richmond dropped from a 7 day average of 27.6 to 21.9 daily new cases per 100,000 population. In Henrico, cases dropped from 24.2 to 21.5 new cases per day, per 100,000.
 - Regarding **case demographics**, in Richmond, males now comprise a higher proportion of cases compared to females, based on data from the past month. Females still comprise a higher proportion of cumulative cases. In Henrico, females still comprise a higher proportion, both cumulatively and in the past month.
 - Regarding the proportion of **cases by age group**, 20-29 year olds continue to be in the lead in Richmond, though cases among 10-19 year olds have the highest case rate, just above the rate of cases among 20-49 year olds. In Henrico, 20-29 year olds continue to lead, though closely followed by 30-39 year olds. Cases among 20-29 year olds also have the highest case rate in Henrico. Cases among all age groups have fallen in both districts.
 - Regarding **race and ethnicity**, in Richmond, the highest proportion of cases is still among Black individuals, again both cumulatively and in the last 4 weeks. Notably, the proportion of cases among Black individuals is now more than double the proportion among White individuals, based on data from the past month, though a substantial proportion of race/ethnicity data (24.1%) is not reported. In Henrico, both cumulatively and in the last 4 weeks, the proportion of cases is highest among White individuals, though an even higher percentage of race and ethnicity data (32.5%) has not been reported in Henrico in the last 4 weeks.
- **Hospitalization** trends among Richmond patients are fluctuating in both districts, based on VEDSS data, though appears to be declining overall. Looking more broadly at the 11 hospitals that comprise the Richmond catchment area, hospitalizations have declined, though ICU hospitalizations and ventilator utilizations have increased slightly over the past week. As summarized at the beginning of this report, all 11 hospitals are operating at a normal clinical status. Regarding **hospitalization demographics**, cumulative hospitalizations are highest among females and Black individuals in both districts. The median age of hospitalization is 62 in Richmond and 68 in Henrico.
- A substantial number of COVID-19 **deaths** have been reported recently, with dates of death ranging from late December to mid-February. New trends still show a decline in deaths in both districts, though with a much higher peak in early January. Cumulatively, deaths are highest among males and Black individuals in Richmond, with a median age of 78. In Henrico, cumulative deaths are highest among females and White individuals, with a median age of 81.
- Richmond and Henrico Health Districts are currently in Phase 1B of **vaccination**. Eligible people include healthcare workers, people living and working in long-term care facilities, police, school staff (K-12), childcare workers, and people over the age of 65. As of March 1, 2021, 13.7% of the region's population has received at least one dose of the vaccine. 7.1% of the region's population has been

fully vaccinated. 13.7% of Richmond and Henrico's combined population has also received at least one dose. 7.1% of the two districts combined population has been fully vaccinated. The majority of vaccine recipients in both districts have been female and people 70-79 years old. Available data indicate that eligible White individuals have received the majority of the vaccine, but a large percentage of recipients' race/ethnicity is still unreported.

1.0 COVID-19 SNAP SHOT

1.1 CONFIRMED CASES, HOSPITALIZATIONS, FATALITIES, AND PROBABLE CASES BY COUNTY

CASE STATUS	RICHMOND CITY	HENRICO COUNTY	VIRGINIA
New cases this month	1996	2838	69534
New cases this week	349	496	11904
All cases	14848	21442	577174
Confirmed cases	12306	16029	454735
Hospitalizations	660	848	22913
Deaths	169	442	7530
Probable cases	2542	5413	122439
Hospitalizations	20	31	1245
Deaths	28	57	1253
Case rate per 100,000	6443.4	6481.5	6762

Weekly cases added are estimated as the difference between the cases recorded from the current and prior week

*Case Rate per 100,000=(confirmed+probable)/population count *100,000.*

Population estimates for the case rate are the most recent as of July 1, 2019 from the [U.S Census Bureau QuickFacts](#)

1.2 CURRENT COVID-19 HOSPITALIZATIONS IN THE RICHMOND CATCHMENT AREA ON MARCH 1, 2021

The data included in this section comes from VHASS and it includes data from the following hospitals: VCU Health System, Retreat Doctors', Bon Secours Community, CWJ Chippenham, CWJ Johnson Willis, VA Medical Center, Bon Secours St. Mary's, Henrico Doctors, and Parham Doctors, Bon Secours St. Francis, and Memorial Regional Medical Center.

	TOTAL IN USE FOR COVID-19	CURRENTLY AVAILABLE
Confirmed Hospitalizations	230	177
Pending Hospitalizations	11	
Confirmed - ICU	66	34
Pending - ICU	1	
Confirmed - Ventilators	53	460
Pending - Ventilators	1	

Within these 11 hospitals that comprise the Richmond catchment area, there are currently 33 available adult ICU beds, and 353 available ventilators. Based on the VHASS hospital dashboard on Dec 14, 2020, all hospitals are operating at normal clinical status.

*A clinical status of “normal” indicates that hospital clinical resources are operating within normal conditions. A clinical status of “full” indicates that hospital clinical resources are exceeded and acceptable care cannot be provided to additional patients. Diversion or Community surge response is required.

2.0 COVID-19 TESTING ENCOUNTERS AND POSITIVITY

2.1 TESTING SUMMARY

Total tests by testing modality and the associated 7-day average in percent positivity are summarized in the table below. Data are from from the [VDH public dashboard](#) on March 1, 2021.

	RICHMOND CITY		HENRICO COUNTY	
	Tests	Positivity	Tests	Positivity
PCR*	206,887	6.0%	297,206	6.8%
Antigen	31,366	6.6%	69,486	6.2%
Total (PCR, antigen, and antibody)	242,354	6.3%	375,081	6.9%

*All testing metrics included in previous reports have been based on PCR tests

2.2 NUMBER OF PCR TESTS RELATIVE TO STATEWIDE TESTING GOAL

The counts below are based on the total number of testing encounters provided by the Virginia Department of Health for Richmond City and Henrico County. **It is important to note that the number of testing encounters is different from the number of people tested, as some individuals may be tested more than once.** The counts below should be viewed as an approximation of the percentage of each county’s population that has been tested and may be higher than the actual percentage of the population tested.

MONTH	RICHMOND CITY - TOTAL PCR TESTS/MONTH	HENRICO COUNTY - TOTAL PCR TESTS/MONTH
February 2021	22,475	31,293
January 2021	35,001	50,108
December 2020	29,921	40,568
November 2020	35,419	30,871

The testing date was not reported for 483 PCR testing encounters in Richmond and not reported for 909 PCR testing encounters in Henrico, inclusive of all PCR tests since January 2020.

3.0 COVID-19 CASES

3.1 SUMMARY OF CASES

Cases in both districts continue to fall. Compared to last week, based on VEDSS data by date, cases in Richmond dropped from a 7 day average of 27.6 to 21.9 daily new cases per 100,000 population. In Henrico, cases dropped from 24.2 to 21.5 new cases per day, per 100,000. Additional epidemic curves based on event date and lab report date show similar trends. Sections 3.12 and 3.13 provide maps of cases in the past month, including and excluding LTCFs, respectively.

In Richmond, males now comprise a higher proportion of cases compared to females, based on data from the past month. Females still comprise a higher proportion of cumulative cases. In Henrico, females still comprise a higher proportion, both cumulatively and in the past month. Regarding the proportion of cases by age group 20-29 year olds continue to be in the lead in Richmond, though cases among 10-19 year olds have the highest case rate, just above the rate of cases among 20-49 year olds. In Henrico, 20-29 year olds continue to lead, though closely followed by 30-39 year olds. Cases among 20-29 year olds also have the highest case rate in Henrico. Cases among all age groups have fallen in both districts.

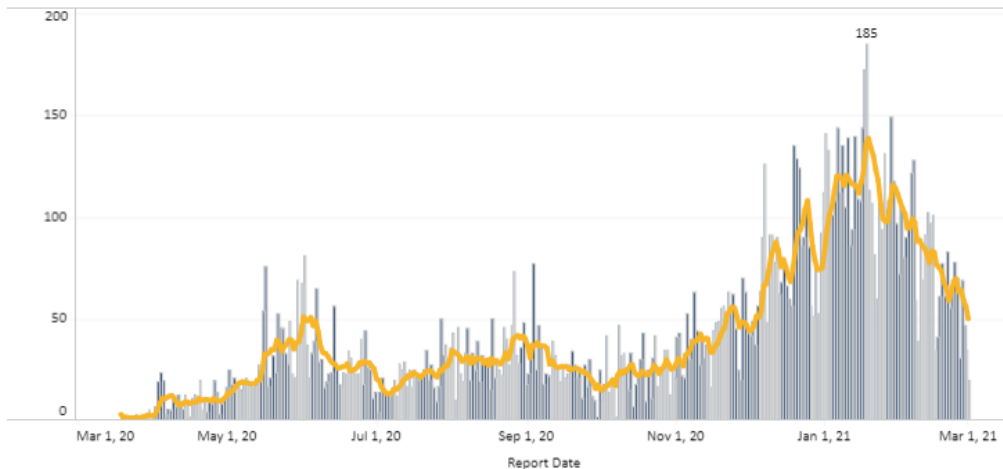
Regarding race and ethnicity, in Richmond, the highest proportion of cases is still among Black individuals, again both cumulatively and in the last 4 weeks. Notably, the proportion of cases among Black individuals is now more than double the proportion among White individuals, based on data from the past month, though a substantial proportion of race/ethnicity data (24.1%) is not reported. In Henrico, both cumulatively and in the last 4 weeks, the proportion of cases is highest among White individuals, though an even higher percentage of race and ethnicity data (32.5%) has not been reported in Henrico in the last 4 weeks. Section 3.10 shows weekly trends in case counts by race and ethnicity.

3.2 CASE REPORTS TRENDS BY DATE (SOURCE-VDH WEBSITE)

The report date corresponds to the date the case count was reported publicly. The report date does not have any equivalent variable in VEDSS, and cannot be directly linked to case-specific dates (e.g., event dates or lab report dates). Case counts by report date are estimated by subtracting the cumulative cases on the previous day from that of the current day. The 7-day moving average is a recurrent average of the number of cases for each 7-day data sequence.

Number of New Cases Reported [^]	7-Day Average Number of Daily New Cases Reported	7-Day Average Number of New Daily Cases Reported, Rate per 100,000 Population	Total Number of New Cases per 100,000 Population within last 14 days
20	50	21.9	346.2

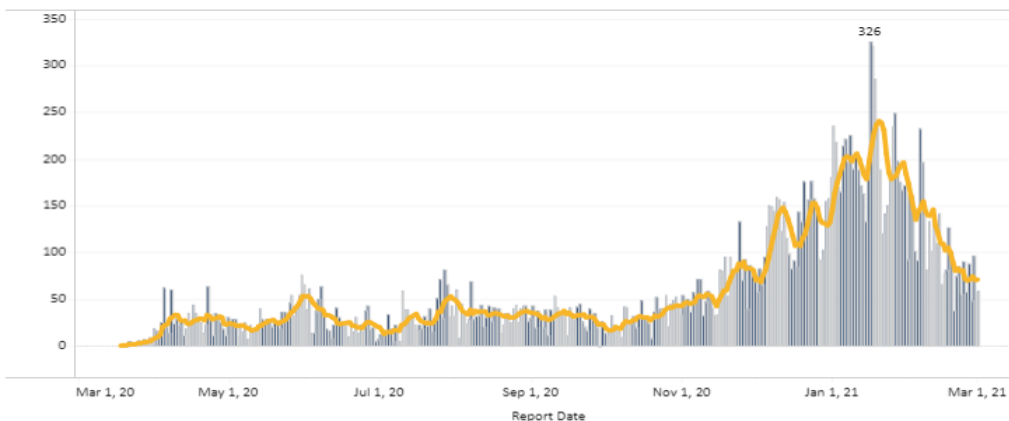
Report Date Daily Cases Counts - Richmond City



- After the case burden in Richmond increased from November through January and exhibited recent peaks in mid-January, it has declined over the course of February, with a recent 7-day average per 100,000 people of 21.9 cases.

Number of New Cases Reported [^]	7-Day Average Number of Daily New Cases Reported	7-Day Average Number of New Daily Cases Reported, Rate per 100,000 Population	Total Number of New Cases per 100,000 Population within last 14 days
59	71	21.5	320.1

Report Date Daily Cases Counts - Henrico

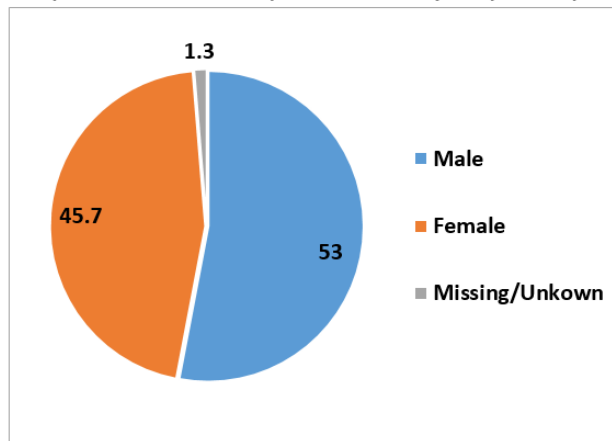


- After the case burden in Henrico increased from November through January and exhibited recent peaks in mid-January, it has declined over the course of February, with a recent 7-day average per 100,000 people of 21.5 cases.

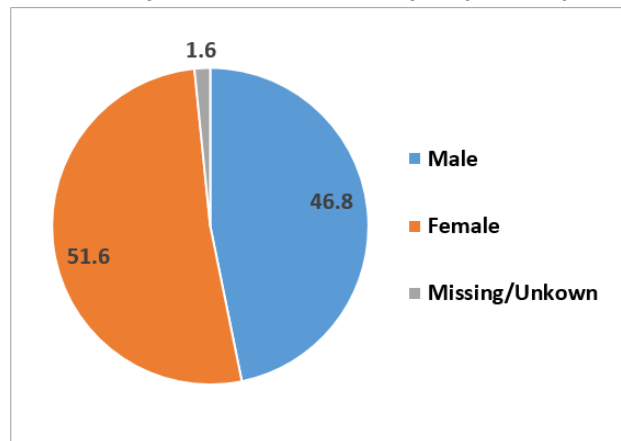
3.3 CASES BY SEX BY COUNTY

All percentages are based on overall case distribution, rather than the proportion of known cases for each measure, and therefore may not correspond directly with VDH percentages.

**COVID-19 case distribution by Sex in the last 4 weeks
(Jan 26 – Feb 28, 2021)—Richmond City, VA (N=1476)**

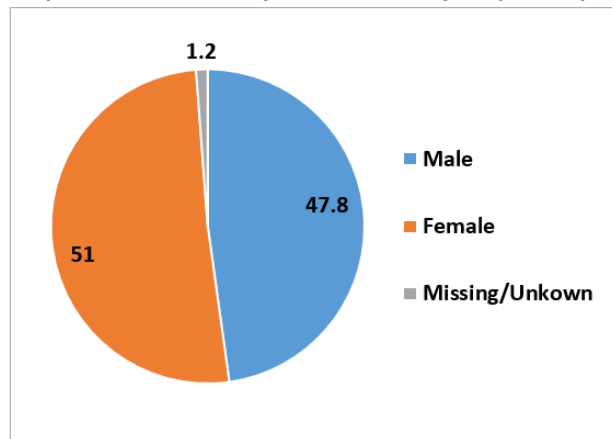


**Cumulative COVID-19 case distribution by Sex as of
February 28, 2021 —Richmond City, VA (n= 14848)**

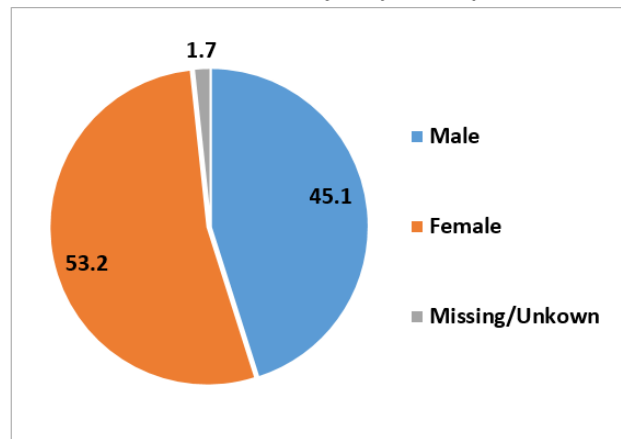


- In Richmond, males now comprise a higher proportion of cases relative to females in the last 4 weeks (53% vs 45.7%), but females comprise a higher proportion cumulatively (51.6% vs 46.8%).

**COVID-19 case distribution by Sex in the last 4 weeks
(Jan 26 – Feb 28, 2021)— Henrico County, VA (N=2109)**



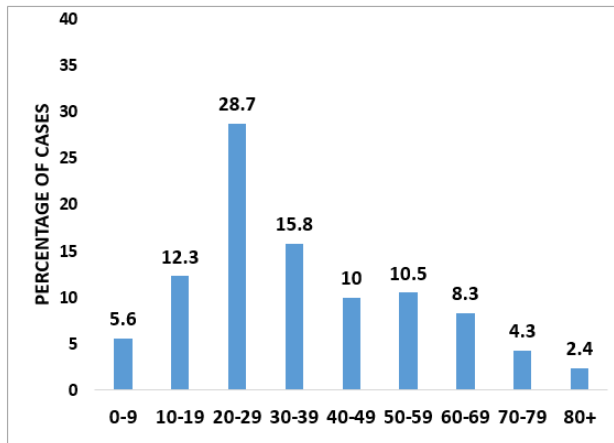
**COVID-19 cases by Sex as of February 28, 2021
—Henrico County, VA (n=21442)**



- In Henrico, females comprise a much higher proportion of cases relative to males both in the last 4 weeks (51% vs 47.8%) as well as cumulatively (53.2% vs 45.1%).

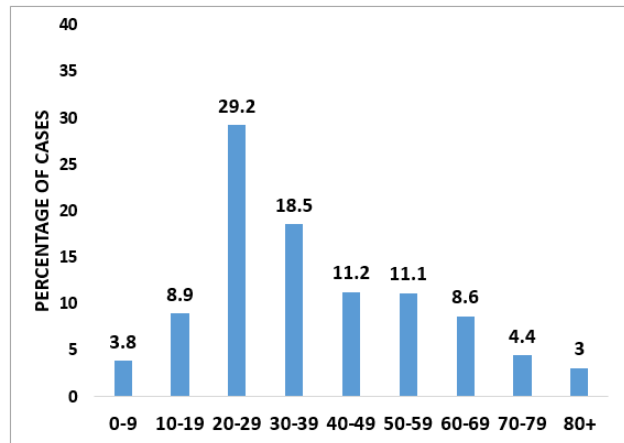
3.4 CASES BY AGE GROUP BY COUNTY

**COVID-19 case distribution by Age in the last 4 weeks
(Jan 26 – Feb 28, 2021)—Richmond City, VA (N=1476)**



Age is missing for 2.1% (n=31) cases

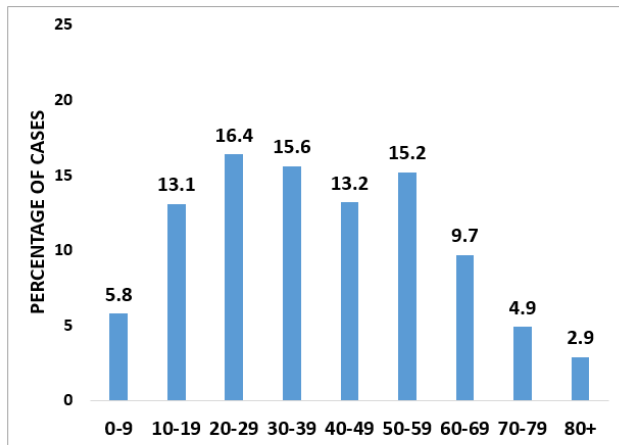
**Cumulative COVID-19 case distribution by Age as of
February 28, 2021 —Richmond City, VA (n= 14848)**



Age is missing for 1.1% (n=168) cases

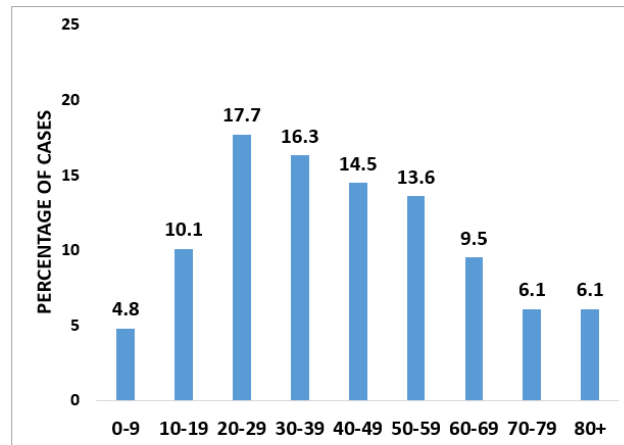
- In Richmond, individuals aged 20-29 (28.7%) comprise the highest number of cases in the last four weeks and cumulatively (29.2%), followed by individuals aged 30-39 years (15.8%) in the last four weeks and (18.5%) cumulatively.

**COVID-19 case distribution by Age in the last 4 weeks
(Jan 26 – Feb 28, 2021)— Henrico County, VA (N=2109)**



Age is missing for 3.2% (n=67) cases

**COVID-19 cases by Age as of February 28, 2021
—Henrico County, VA (n=21442)**

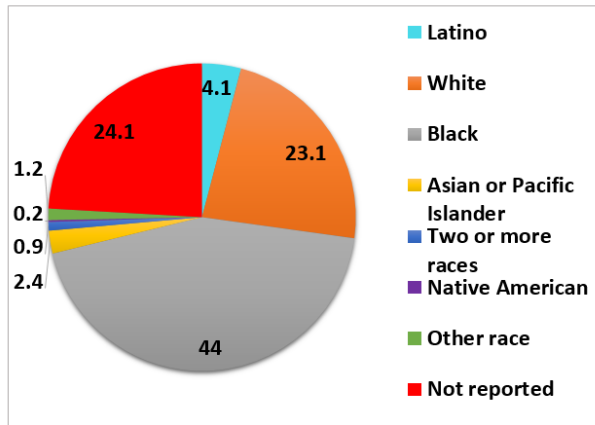


Age is missing for 1.5% (n=320) cases

- In Henrico, individuals aged 20-29 (16.4%) comprise the highest number of cases in the last four weeks and (17.7%) cumulatively. Cases in the 30-39 age group closely follow at (15.6%) and the 50-59 age group at (15.2%).

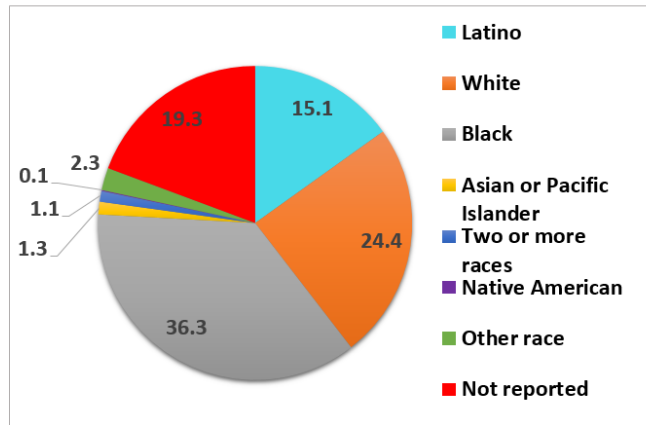
3.6 CASES AND POPULATION PROPORTIONS BY RACE AND ETHNICITY BY COUNTY

COVID-19 case distribution by Race and ethnicity in the last 4 weeks (Jan 26 – Feb 28, 2021)—Richmond City, VA (N=1476)



*Missing and Unknown Ethnicities were assumed to be of Non-Hispanic ethnicity

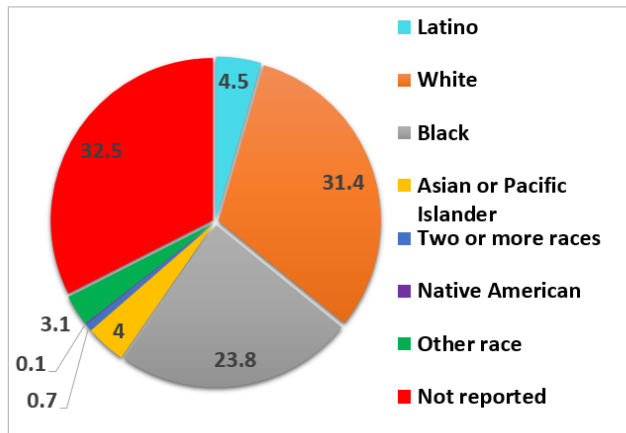
Cumulative COVID-19 case distribution by Race and ethnicity as of February 28, 2021 —Richmond City, VA (n= 14848)



*Missing and Unknown Ethnicities were assumed to be of Non-Hispanic ethnicity

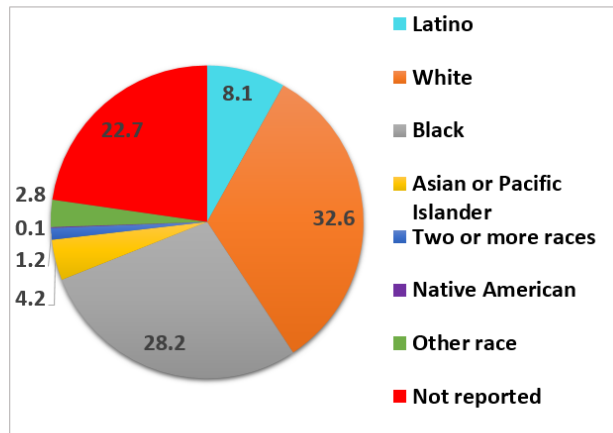
- In Richmond, the proportion of cases among Black individuals in the last 4 weeks represents the highest case burden at (44%). Black individuals also comprise the majority of cumulative cases (36.3%) followed by White (24.4%) individuals.

COVID-19 case distribution by Race and ethnicity in the last 4 weeks (Jan 26 – Feb 28, 2021)— Henrico County, VA (N=2109)



*Missing and Unknown Ethnicities were assumed to be of Non-Hispanic ethnicity

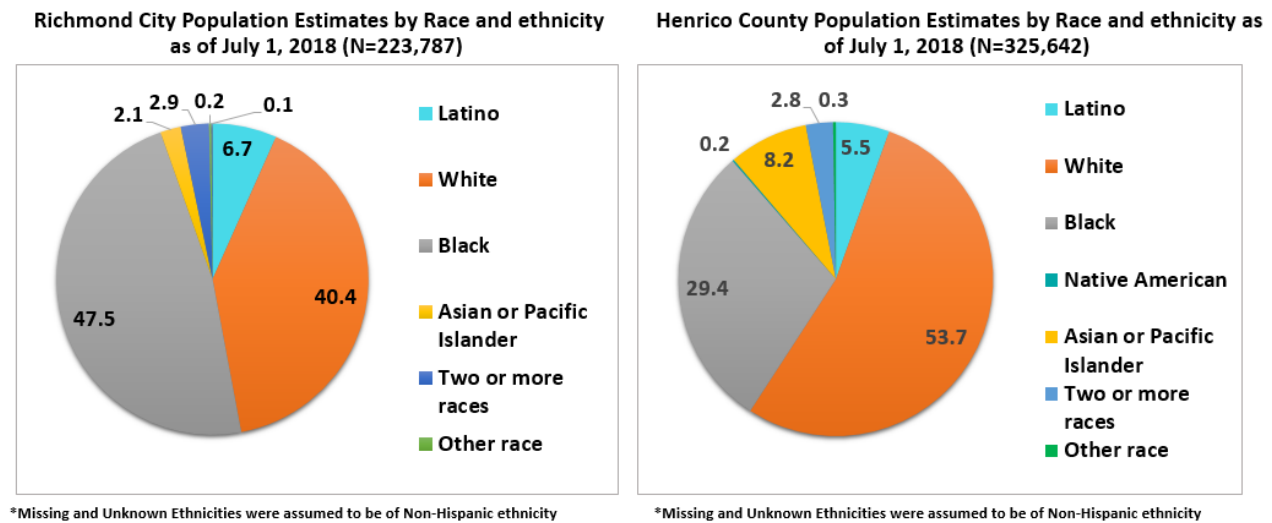
Cumulative COVID-19 case distribution by Race and ethnicity as of February 28, 2021 —Henrico County, VA (n=21442)



*Missing and Unknown Ethnicities were assumed to be of Non-Hispanic ethnicity

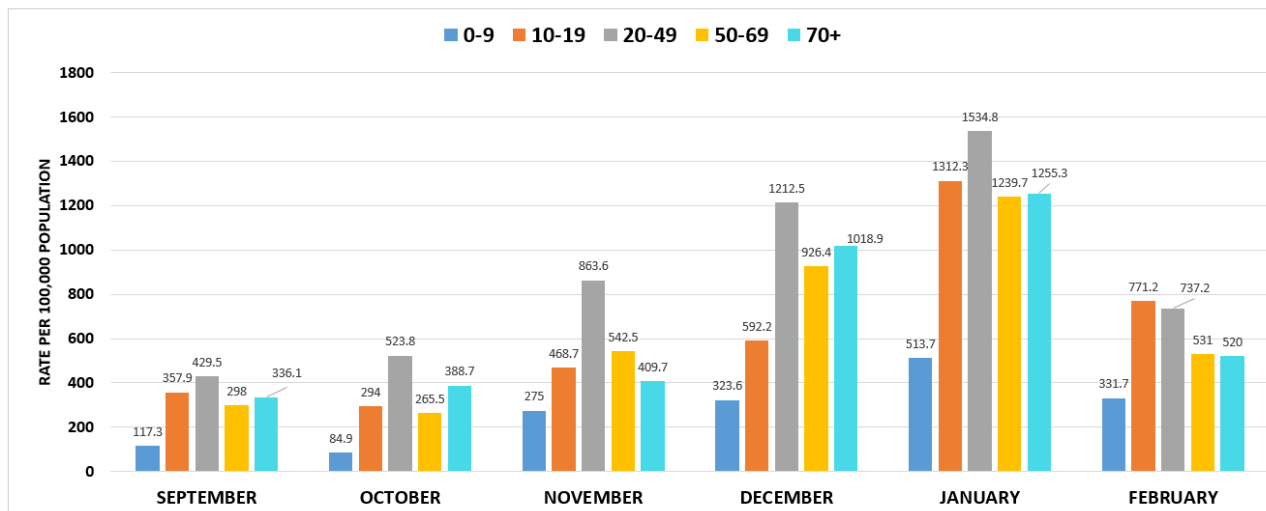
- In Henrico, the proportion of cases among White individuals in the last 4 weeks represents the highest case burden at (31.4%). White individuals also comprise the majority of cumulative cases (32.6%) followed by Black (28.2%) individuals. Not reported cases constitute a significant number of cases as well at (32.5%) in the last four weeks and (22.7%) cumulatively.

Population estimates for the Race and Ethnicity subgroup analyses are from the [2018 ACS 5-year estimates](#)



3.7 CONFIRMED AND PROBABLE CASE RATES BY COUNTY

Age-specific rates of COVID-19 between September 2020 and February 2021 – Richmond City, VA (9079 of 14848)

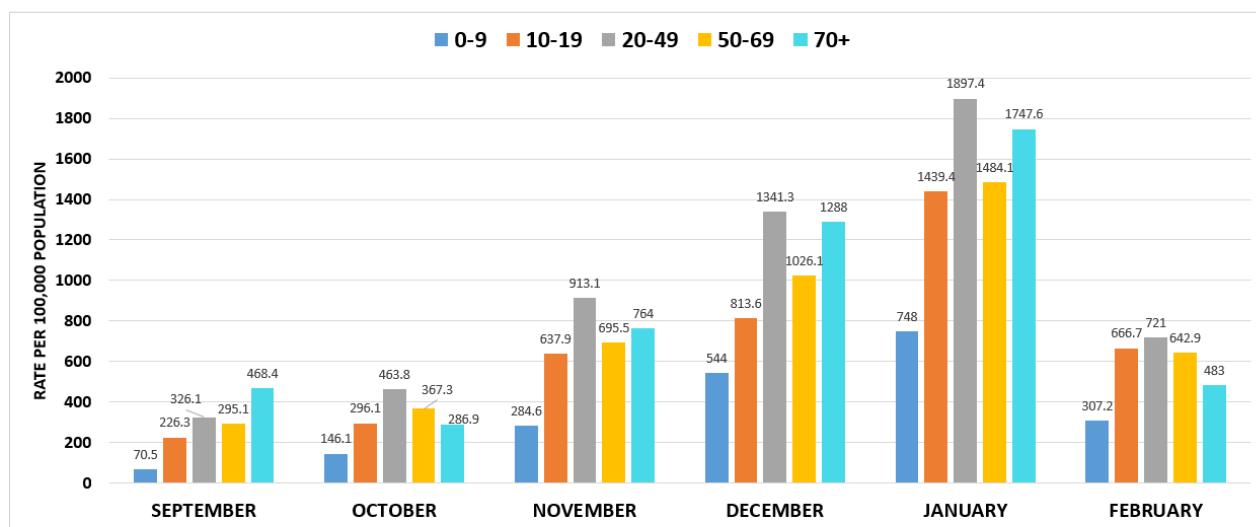


*Cases where age or event date were missing are not included

* Unstable rates (n<20) are highlighted (*)

- Individuals aged 10-19 constitute the highest burden in the month of February, closely followed by 20-49 year olds. Individuals aged 20-49 years have recorded the highest age-specific case rates from since September. Case rates in February should be interpreted with caution, as cases continue to be added.

Age-specific rates of COVID-19 September 2020 and February 2021 —Henrico County, VA (14532 of 21442)



*Cases where age or event date were missing are not included

* Unstable rates (n<20) are highlighted (*)

- Individuals aged 20-49 constitute the highest burden in the month of February, closely followed by 10-19 year olds and 50-69 year olds. Individuals aged 20-49 years have recorded the highest age-specific case rates from September through February. Case rates in February should be interpreted with caution, as cases continue to be added.

4.0 COVID-19 HOSPITALIZATIONS

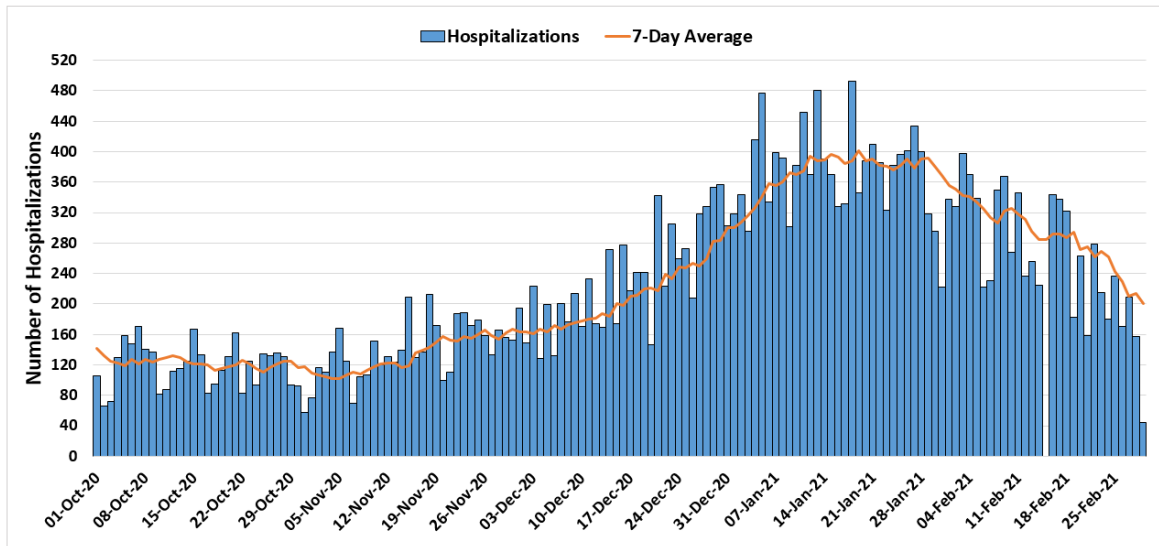
4.1 SUMMARY OF HOSPITALIZATION

Among the 11 hospitals that comprise the Richmond catchment area, hospitalizations have declined, though ICU hospitalizations and ventilator utilizations have increased slightly over the past week (see [VDH Dashboard](#) for additional trend data). As summarized at the beginning of this report, all 11 hospitals are operating at a normal clinical status.

Regarding hospitalization demographics, cumulative hospitalizations are highest among females and Black individuals in both districts. The median age of hospitalization is 62 in Richmond and 68 in Henrico.

4.2 HOSPITALIZATIONS (CONFIRMED AND PENDING) BY DAY IN THE RICHMOND CATCHMENT AREA AS OF FEBRUARY 28, 2021

Total Daily COVID-19 Hospitalizations, October 1st, 2020 – February 28th, 2021
Richmond Catchment Area (33995 of 63160)

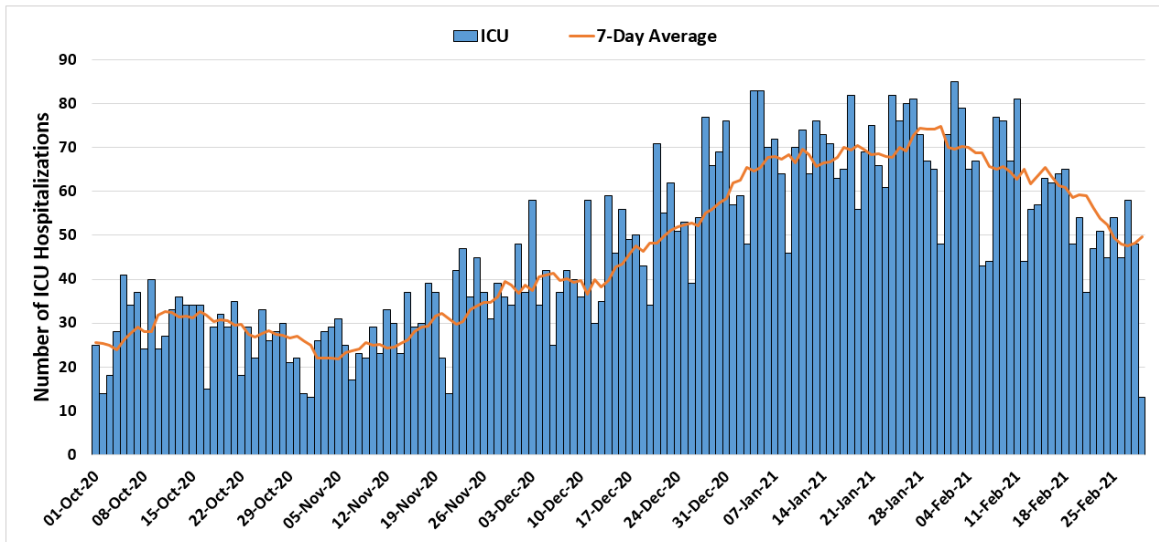


* Data points from March until September 30th are excluded to allow for clarity in trends/patterns.

- Data from the 11 hospitals included in this analysis suggests a recent decrease in overall hospitalizations, following a noticeable increase throughout the month of December and a plateau during the month of January. Generally, hospitalizations seem to be trending downward.

4.3 ICU HOSPITALIZATIONS (CONFIRMED AND PENDING) BY DAY IN THE RICHMOND CATCHMENT AREA AS OF FEBRUARY 28, 2021

Total Daily COVID-19 ICU Hospitalizations, October 1st, 2020 – February 28th, 2021
Richmond Catchment Area (7092 of 15063)

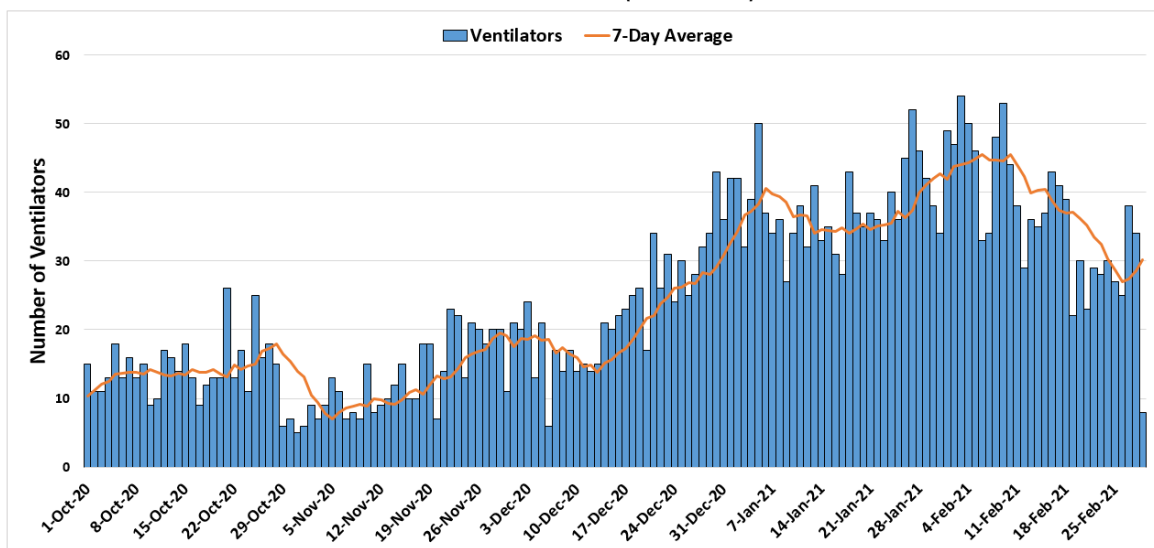


* Data points from March until September 30th are excluded to allow for clarity in trends/patterns.

- Following a recent plateau and mild fluctuations in January and early February, ICU hospitalizations have been decreasing overall throughout the month of February.

4.4 VENTILATOR UTILIZATIONS (PATIENTS ON VENTILATORS) BY DAY IN RICHMOND CATCHMENT AREA AS OF FEBRUARY 28, 2021

Total Daily COVID-19 Ventilator Utilizations, October 1st, 2020 – February 28th, 2021
Richmond Catchment Area (3742 of 7340)



* Data points from March until September 30th are excluded to allow for clarity in trends/patterns.

- Ventilator utilization fluctuated throughout December and, despite peaks towards the end of January and beginning of February, appeared to be decreasing overall during the month of February except for a recent spike near the end of February.

4.5 HOSPITALIZATIONS BY SEX, RACE, AND AGE BY COUNTY

The minimum age ranges correspond to ages in months, which have been converted to years.

CONFIRMED AND PROBABLE	RICHMOND (n= 680)	HENRICO (n= 879)
Gender		
Male	329	431
Female	350	447
Missing	1	1
Median Age (range)	62 (0.2 - 96)	68 (0.1 - 101)
Race		
White	104	325
Black	410	397
Latino	131	73
Asian or Pacific Islander	6	24
Other race	9	31
Two or more races	8	11
Not reported	11	325

Women comprise a majority of hospitalizations in both Richmond and Henrico. In Richmond, Black individuals comprise the majority of hospitalizations, which is also the case in Richmond. The median age of hospitalization for Richmond and Henrico is sixty-two and sixty-eight, respectively.

5.0 COVID-19 FATALITIES

5.1 SUMMARY OF FATALITIES

A substantial number of COVID-19 deaths have been reported recently, with dates of death ranging from late December to mid-February. New trends still show a decline in deaths in both districts, though with a much higher peak in early January (see [VDH Dashboard](#) for additional trend data). Cumulatively, deaths are highest among males and Black individuals in Richmond, with a median age of 78. In Henrico, cumulative deaths are highest among females and White individuals, with a median age of 81.

5.3 DEATHS BY SEX, RACE, AND AGE BY COUNTY

CONFIRMED AND PROBABLE	RICHMOND (n= 197)	HENRICO (n= 499)
Gender		
Male	104	223
Female	91	275
Not reported	1	1
Median Age (range)	78 (31 - 98)	81 (21 - 106)
Race		
White	68	283
Black	105	173
Latino	12	20
Asian or Pacific Islander	*	11
Other race	*	*
Two or more races	*	5
Not reported	4	6

* Counts <5 have been suppressed.

6.0 VACCINATION

6.1 VACCINE SUMMARY

Richmond and Henrico Health Districts are currently in Phase 1B of vaccination. Eligible people include healthcare workers, people living and working in long-term care facilities, police, school staff (K-12), childcare workers, and people over the age of 65. Vaccine supply and distribution are summarized in the tables below.

As of March 1, 2021, 13.7% of the region's population has received at least one dose of the vaccine. 7.1% of the region's population has been fully vaccinated. 13.7% of Richmond and Henrico's combined population has also received at least one dose. 7.1% of the two districts combined population has been fully vaccinated.

The majority of vaccine recipients in both districts have been female and people 70-79 years old. Available data indicate that eligible White individuals have received the majority of the vaccine, but a large percentage of recipients' race/ethnicity is still unreported.

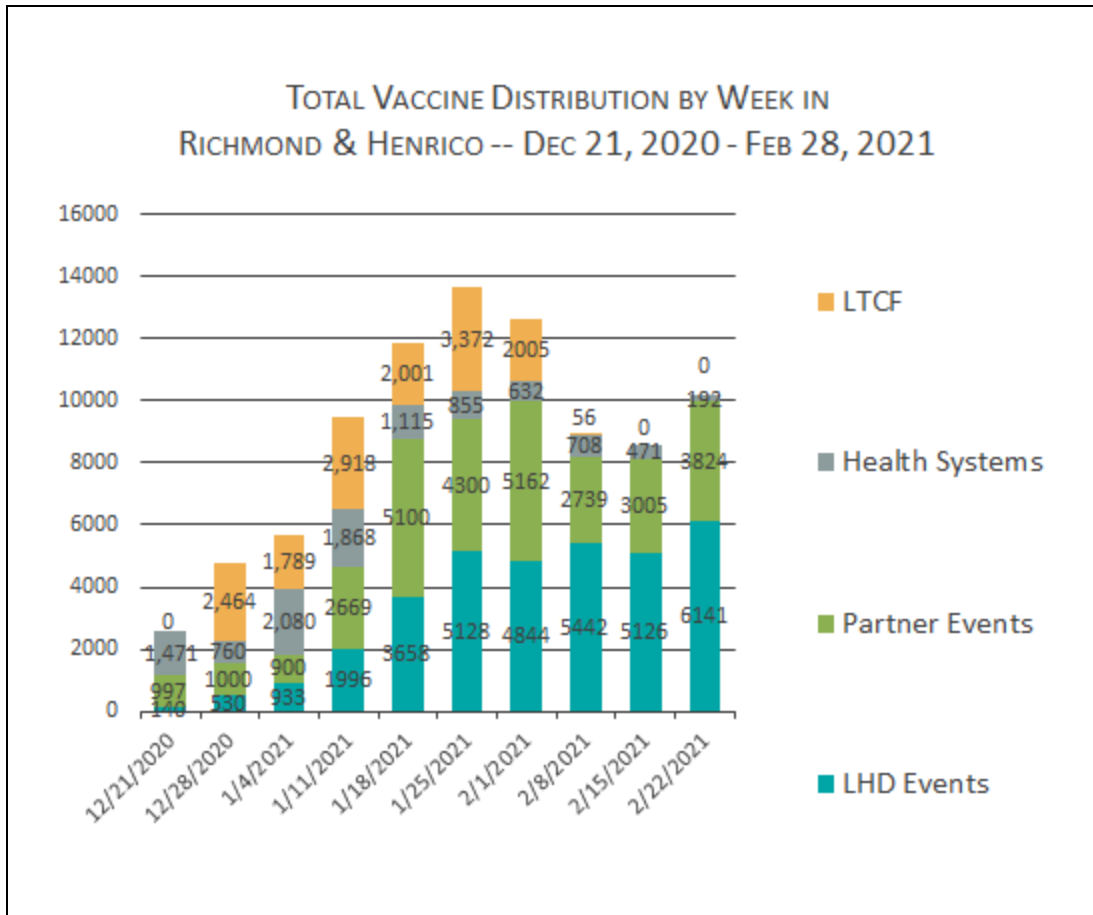
6.2 VACCINATIONS BY LOCALITY AS OF MARCH 1, 2021 - SOURCE: [VDH.VIRGINIA.GOV](https://www.vdh.virginia.gov)

HEALTH DISTRICT	LOCALITY	POPULATION	FIRST DOSES ADMINISTERED	SECOND DOSES ADMINISTERED
Chesterfield	Chesterfield	352,802	45,805	23,299
	Colonial Heights	17,428	1,874	885
	Powhatan	28,815	4,234	1,772
Chickahominy	Charles City	6,963	1,411	400
	Goochland	23,753	4,740	2,505
	Hanover	107,766	47,928	25,258
	New Kent	23,091	3,086	1,860
Henrico	Henrico	330,818	47,928	25,258
Richmond	Richmond City	226,622	28,268	14,299
Total		1,118,058	153,009	79,702

As of March 1, 2021, 13.7% of the region's population has received at least one dose of the vaccine. 7.1% of the region's population has been fully vaccinated. 13.6% of Richmond and Henrico's combined population has received at least one dose. 7.1% of the two districts combined population has been fully vaccinated.

We have set a goal of vaccinating 75% of the population to reach herd immunity. First and second doses of the Pfizer vaccine must be administered at least 21 days apart. First and second doses of the Moderna vaccine must be administered at least 28 days apart.

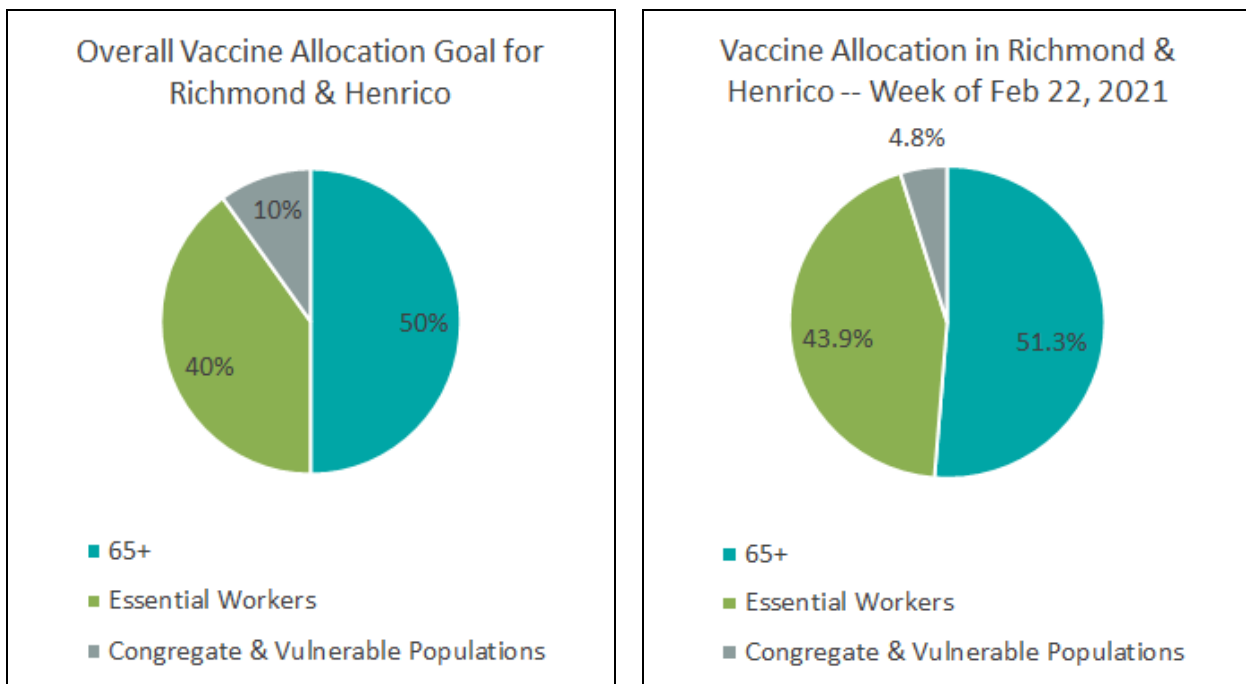
6.3 WEEKLY TOTALS BY VACCINATION PATHWAY FOR RICHMOND AND HENRICO - SOURCE: INTERNAL TRACKING, VIIS



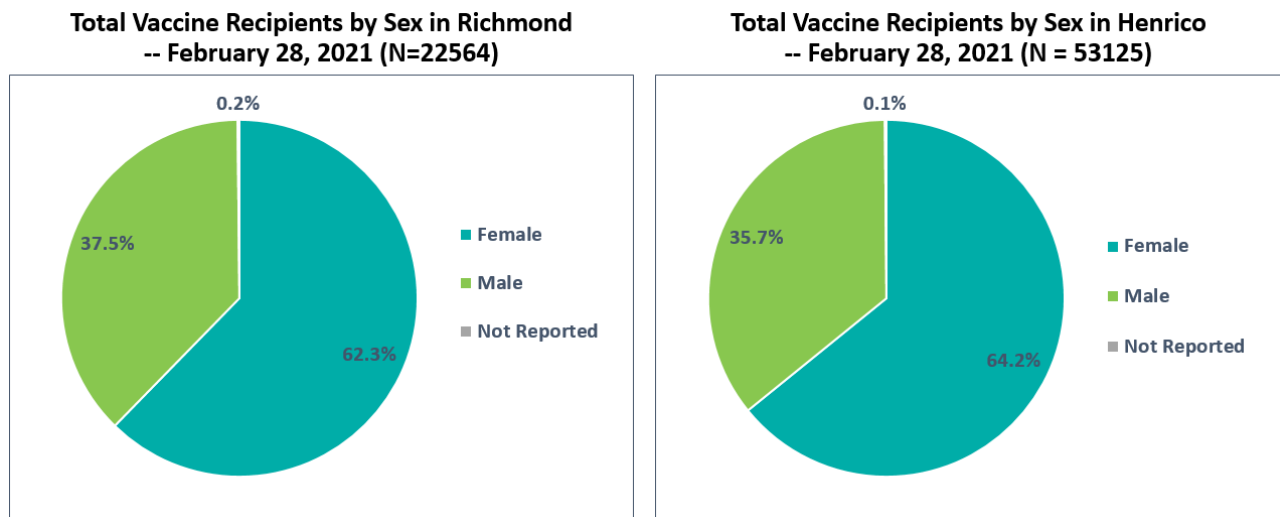
Health system totals reflect Richmond and Henrico residents who were vaccinated at one of the hospitals in the Richmond hospital catchment area - VCU Health System, Retreat Doctors', Bon Secours Community, CWJ Chippenham, CWJ Johnson Willis, Bon Secours St. Mary's, Henrico Doctors, and Parham Doctors, Bon Secours St. Francis, and Memorial Regional Medical Center. VA Medical Center is included in the COVID-19 hospitalization section of this report but vaccination data for this hospital is not yet available in VIIS.

6.4 VACCINE DISTRIBUTION BY ELIGIBLE POPULATION IN RICHMOND & HENRICO - SOURCES: INTERNAL TRACKING

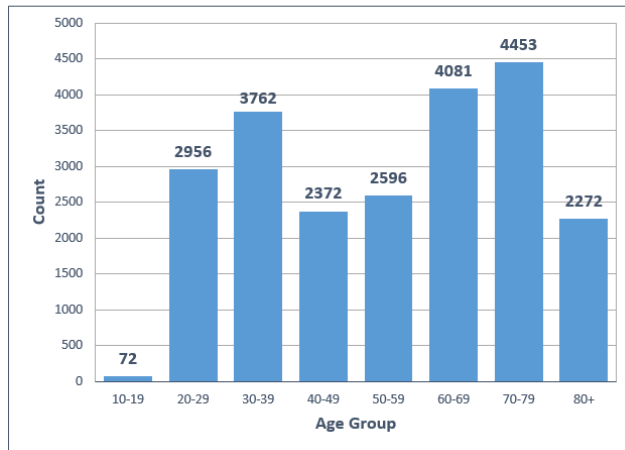
The following charts reflect RCHD/HCHD's goal for vaccine distribution overall and by week among eligible priority populations in the past week.



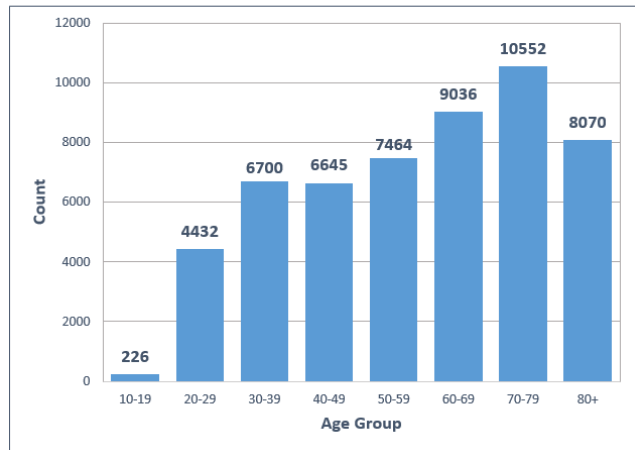
6.5 VACCINE DISTRIBUTION BY DEMOGRAPHIC SUBGROUP - SOURCE: VIIS



**Total Vaccine Recipients by Age Group in Richmond
– February 28, 2021 (N = 22564)**

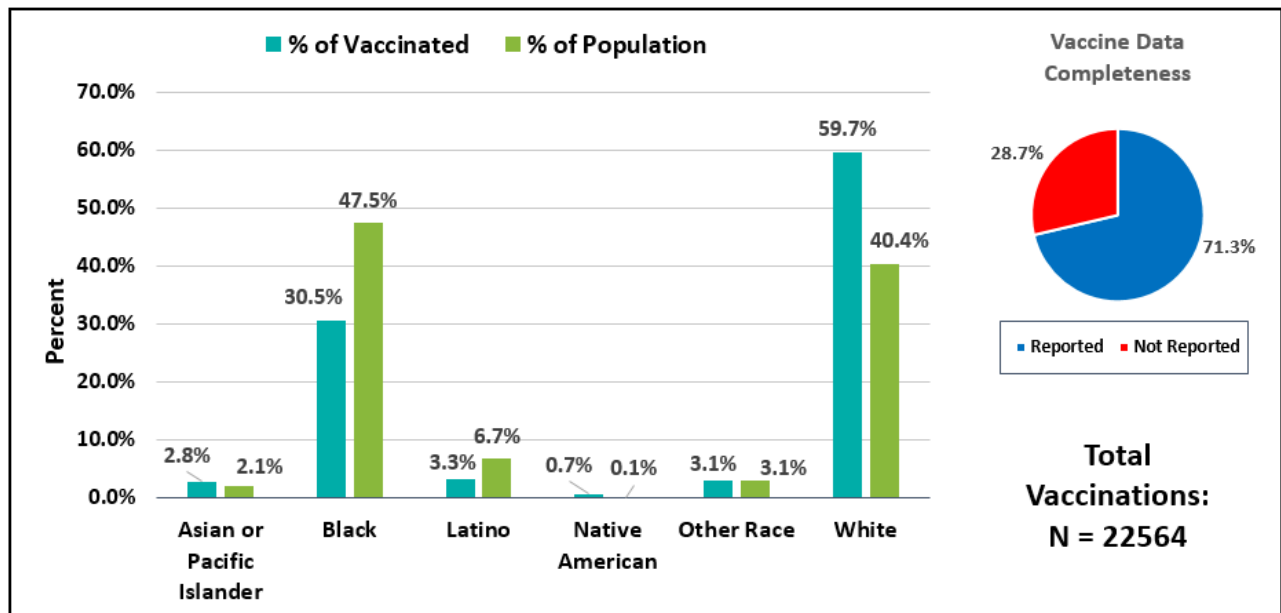


**Total Vaccine Recipients by Age Group in Henrico
– February 28, 2021 (N = 53125)**



The charts below compare the percentage breakdown of racial or ethnic identification of vaccinated individuals to the expected percentage breakdown of the racial or ethnic identification of the population. A notable discrepancy can be seen when looking at Black individuals, who comprise 47.5% of the Richmond population and 29.4% of the Henrico population yet only 30.5% of vaccine recipients in Richmond and 21.2% of vaccine recipients in Henrico.

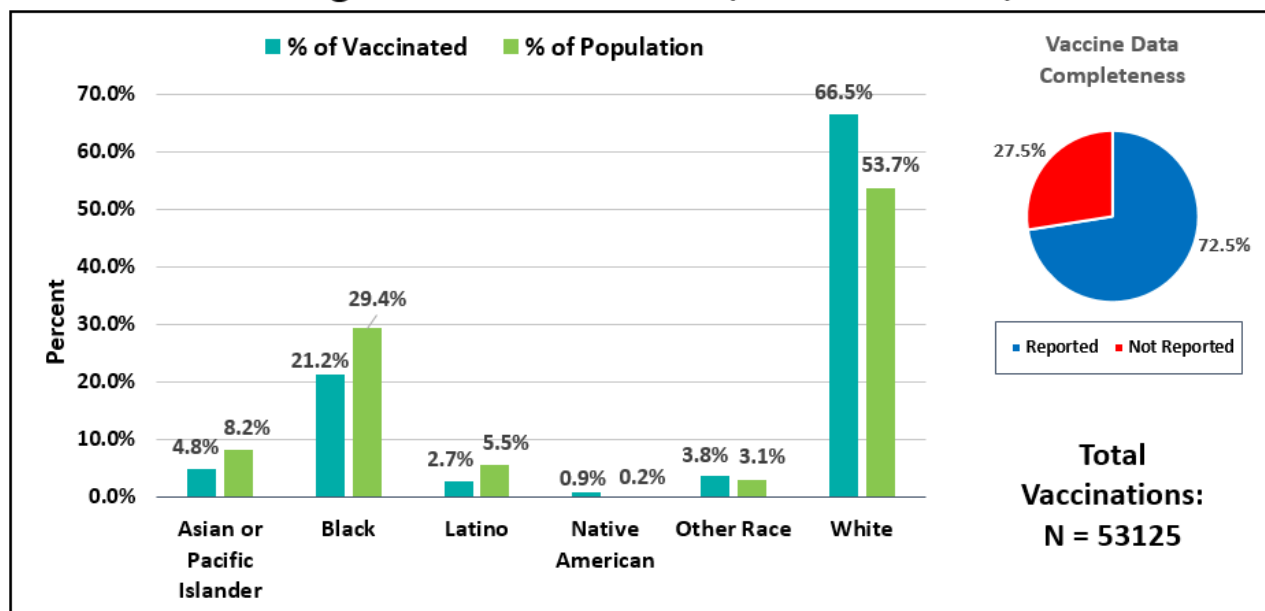
**Vaccine Recipients vs. Population by Race/Ethnicity
Percentages in Richmond – Dec 15, 2020 to Feb 28, 2021**



*For race/ethnicity of vaccine recipients, "Not Reported" comprises 28.7% (n=6470).

*Missing and Unknown Ethnicities were assumed to be of Non-Hispanic ethnicity.

Vaccine Recipients vs. Population by Race/Ethnicity Percentages in Henrico – Dec 15, 2020 to Feb 28, 2021

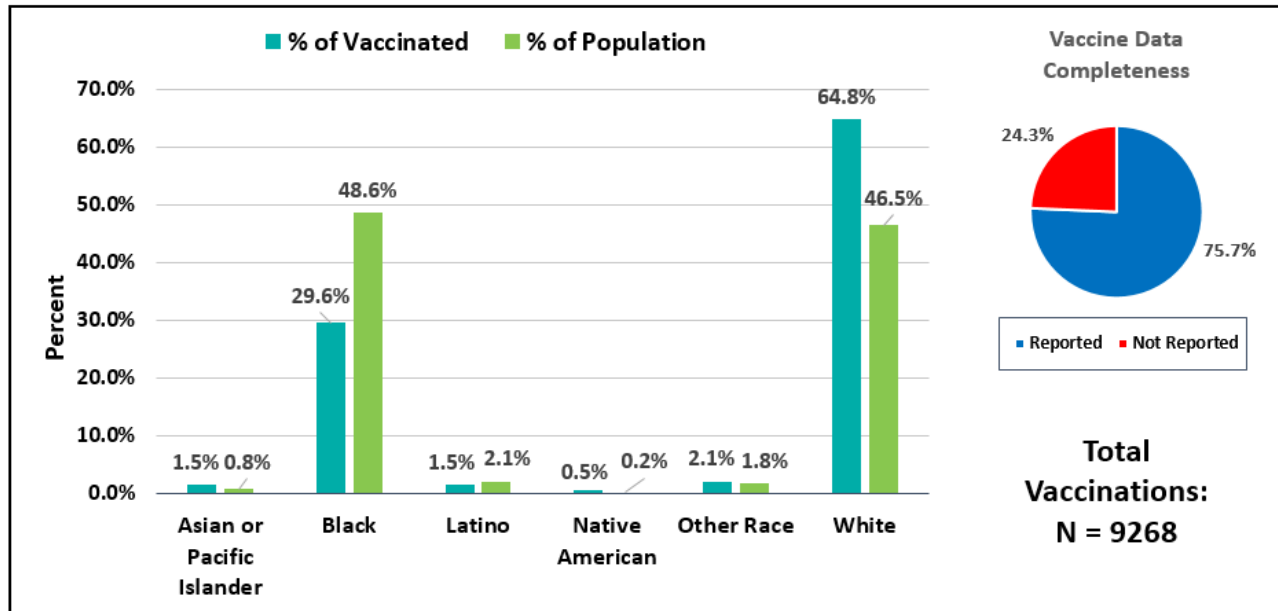


*For race/ethnicity of vaccine recipients, "Not Reported" comprises 27.5% (n=14614).

*Missing and Unknown Ethnicities were assumed to be of Non-Hispanic ethnicity.

The figures below compare the percentage breakdown by race and ethnicity specifically for individuals 65 and over. In Richmond City, Black individuals comprise 48.6% of the population of those aged 65 years and older, yet make up only 29.6% of vaccine recipients. This discrepancy can also be noted in Henrico, where Black individuals make up 25.6% of the population, yet thus far have only comprised 16.0% of vaccine recipients.

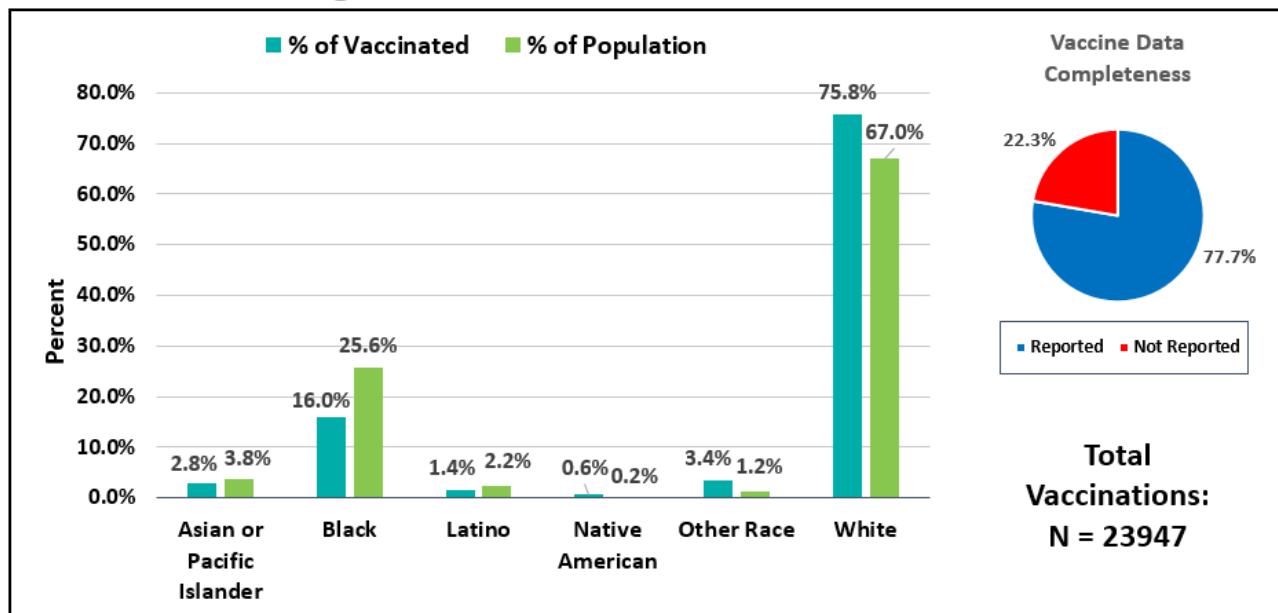
Vaccine Recipients vs. Population 65 and Over by Race/Ethnicity Percentages in Richmond – Dec 15, 2020 to Feb 28, 2021



*For race/ethnicity of vaccine recipients, "Not Reported" comprises 24.3% (n=9268).

*Missing and Unknown Ethnicities were assumed to be of Non-Hispanic ethnicity.

Vaccine Recipients vs. Population 65 and Over by Race/Ethnicity Percentages in Henrico – Dec 15, 2020 to Feb 28, 2021



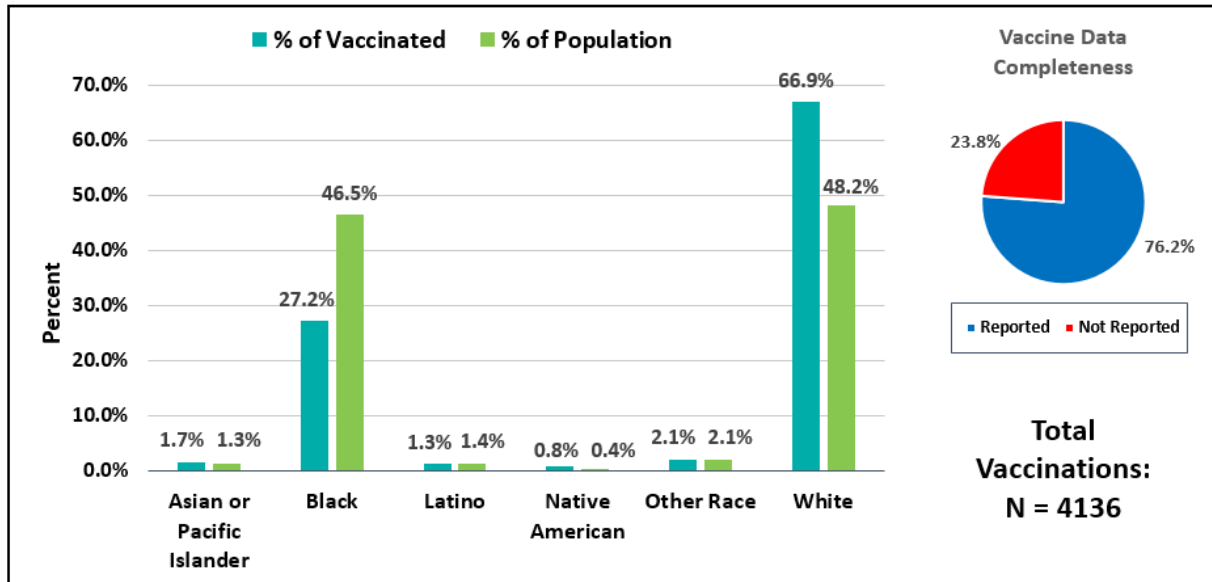
*For race/ethnicity of vaccine recipients, "Not Reported" comprises 22.3% (n=5339).

*Missing and Unknown Ethnicities were assumed to be of Non-Hispanic ethnicity.

The below metrics pertain to individuals aged 75 and older. In Richmond, there is a notable discrepancy wherein Black individuals comprise 46.5% of the Richmond population aged 75 years and older but only

27.2% of vaccine recipients. In Henrico, Black individuals comprise 22.9% of the population aged 75 years and older, but only make up 12.4% of vaccine recipients.

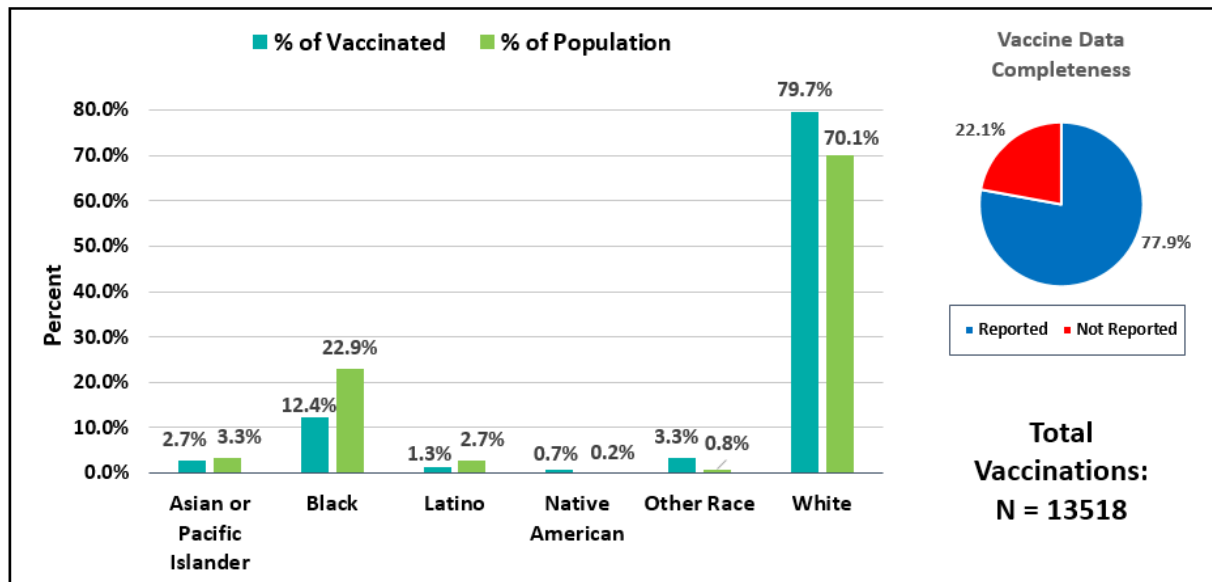
Vaccine Recipients vs. Population 75 and Over by Race/Ethnicity Percentages in Richmond – Dec 15, 2020 to Feb 28, 2021



*For race/ethnicity of vaccine recipients, "Not Reported" comprises 23.8% (n=984).

*Missing and Unknown Ethnicities were assumed to be of Non-Hispanic ethnicity.

Vaccine Recipients vs. Population 75 and Over by Race/Ethnicity Percentages in Henrico – Dec 15, 2020 to Feb 28, 2021



*For race/ethnicity of vaccine recipients, "Not Reported" comprises 22.1% (n=2994).

*Missing and Unknown Ethnicities were assumed to be of Non-Hispanic ethnicity.

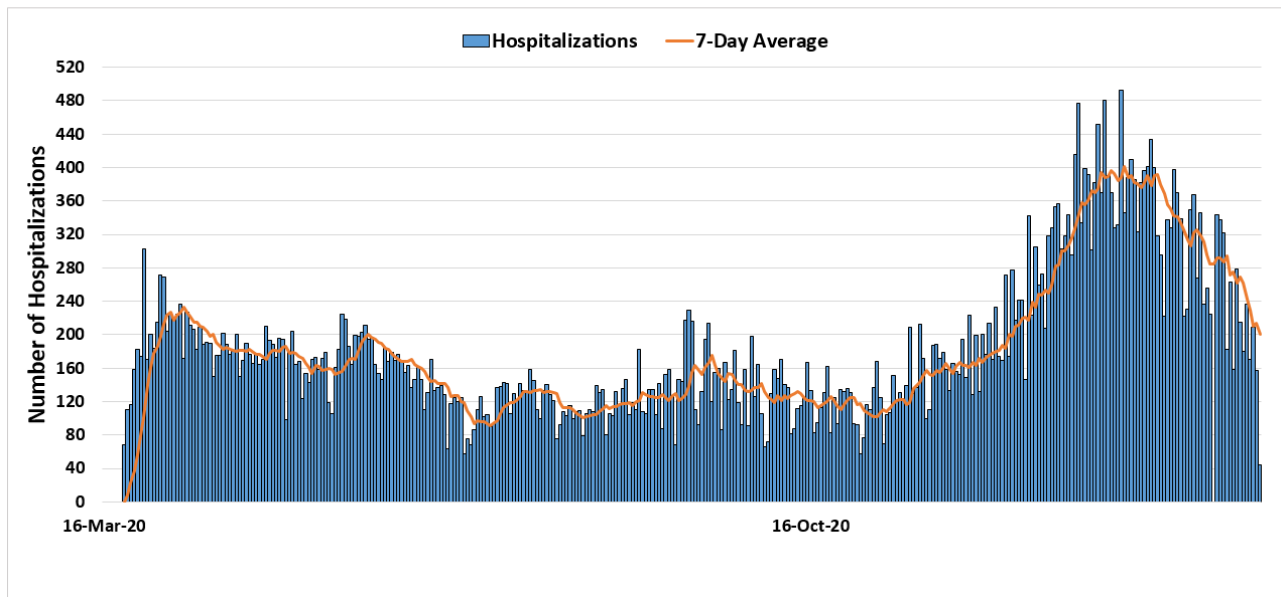
7.0 APPENDIX

7.1 CENSUS POPULATION ESTIMATES BY AGE AND RACE--RICHMOND CITY AND HENRICO COUNTY

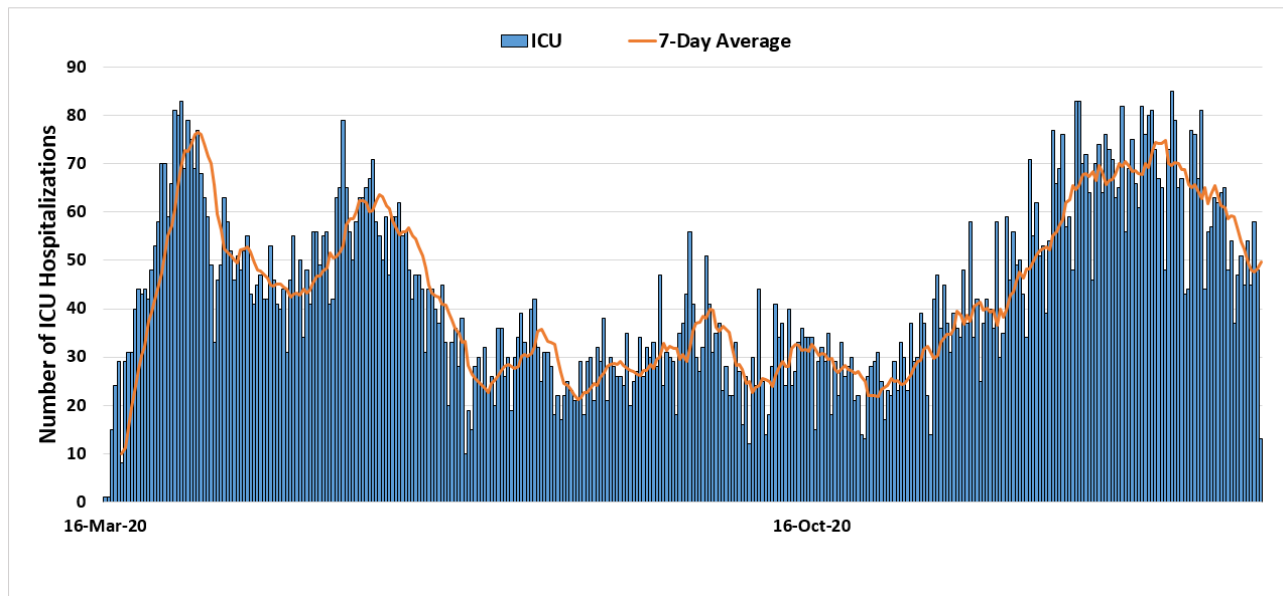
Richmond City Population Estimates by Age and Race, as of July 1, 2018 (N=228,783)					Henrico County Population Estimates by Age and Race, as of July 1, 2018 (N=329,261)				
Age group (Years)	LATINO	NH WHITE	NH BLACK	NH OTHER	Age group (Years)	LATINO	NH WHITE	NH BLACK	NH OTHER
0-9	3807	6375	13310	1232	0-9	3764	17467	11946	6531
10-19	2282	6587	13047	1554	10-19	3464	18739	13872	5470
20-29	3417	21968	18657	3146	20-29	2870	19249	15019	5142
30-39	2817	19613	14235	1897	30-39	3360	22298	13542	7601
40-49	1901	10191	10525	831	40-49	2608	22194	12532	5766
50-59	1129	10805	14747	690	50-59	1696	25701	13509	3338
60-69	525	10589	13292	574	60-69	819	23639	10596	2368
70-79	218	5457	5866	271	70-79	391	14553	5349	1147
80+	79	3599	3369	181	80+	174	9618	2487	442

7.2 VHASS HOSPITALIZATION MEASURES - FULL DATA RANGE - MARCH 14 - PRESENT

Total Daily COVID-19 Hospitalizations, March 14th, 2020 – February 28th, 2021
Richmond Catchment Area (N = 63160)



Total Daily COVID-19 ICU Hospitalizations, March 14th, 2020 – February 28th, 2021
Richmond Catchment Area (N = 15063)



Total Daily COVID-19 Ventilator Utilizations, March 14th, 2020 – February 28th, 2021
Richmond Catchment Area (N = 7340)

