

WEEKLY CASE REPORT FOR EXTERNAL USE

MONTH OF MAR (MAR 1- APR 4, 2021)

| | |
|---|-----------|
| KEY TAKEAWAYS | 2 |
| 1.0 COVID-19 SNAP SHOT | 4 |
| 1.1 CONFIRMED CASES, HOSPITALIZATIONS, FATALITIES, AND PROBABLE CASES BY COUNTY | 4 |
| 1.2 CURRENT COVID-19 HOSPITALIZATIONS IN THE RICHMOND CATCHMENT AREA ON APRIL 4, 2021 | 4 |
| 2.0 COVID-19 TESTING ENCOUNTERS AND POSITIVITY | 5 |
| 2.1 TESTING SUMMARY | 5 |
| 2.2 NUMBER OF PCR TESTS RELATIVE TO STATEWIDE TESTING GOAL | 5 |
| 3.0 COVID-19 CASES | 6 |
| 3.1 SUMMARY OF CASES | 6 |
| 3.2 CASE REPORTS TRENDS BY DATE (SOURCE-VDH WEBSITE) | 6 |
| 3.3 CASES BY SEX BY COUNTY | 7 |
| 3.4 CASES BY AGE GROUP BY COUNTY | 8 |
| 3.5 CASES AND POPULATION PROPORTIONS BY RACE AND ETHNICITY BY COUNTY | 9 |
| 4.0 COVID-19 HOSPITALIZATIONS | 12 |
| 4.1 SUMMARY OF HOSPITALIZATION | 12 |
| 4.2 HOSPITALIZATIONS (CONFIRMED AND PENDING) BY DAY IN THE RICHMOND CATCHMENT AREA AS OF APRIL 4, 2021 | 13 |
| 4.3 ICU HOSPITALIZATIONS (CONFIRMED AND PENDING) BY DAY IN THE RICHMOND CATCHMENT AREA AS OF APRIL 4, 2021 | 14 |
| 4.4 VENTILATOR UTILIZATIONS (PATIENTS ON VENTILATORS) BY DAY IN RICHMOND CATCHMENT AREA AS OF APRIL 4, 2021 | 15 |
| 4.5 HOSPITALIZATIONS BY SEX, RACE, AND AGE BY COUNTY | 15 |
| 5.0 COVID-19 FATALITIES | 16 |
| 5.1 SUMMARY OF FATALITIES | 16 |
| 5.2 DEATHS BY SEX, RACE, AND AGE BY COUNTY | 16 |
| 6.0 VACCINATION | 17 |
| 6.1 VACCINE SUMMARY | 17 |
| 6.2 VACCINATIONS BY LOCALITY AS OF APRIL 5, 2021 - SOURCE: VDH.VIRGINIA.GOV | 17 |
| 6.3 WEEKLY TOTALS BY VACCINATION PATHWAY FOR RICHMOND AND HENRICO - SOURCE: INTERNAL TRACKING, VIIS | 18 |
| 6.4 VACCINE DISTRIBUTION BY DEMOGRAPHIC SUBGROUP - SOURCE: VIIS | 18 |
| 7.0 APPENDIX | 22 |
| 7.1 CENSUS POPULATION ESTIMATES BY AGE AND RACE--RICHMOND CITY AND HENRICO COUNTY | 22 |
| 7.2 VHASS HOSPITALIZATION MEASURES - FULL DATA RANGE - MARCH 14 - PRESENT | 22 |

KEY TAKEAWAYS

- According to the [VDH Pandemic Metrics Dashboard](#), the Central Region is still experiencing a high burden of cases and a substantial activity level, with a fluctuating trend in cases. As of April 5, the **daily case incidence rate** in Richmond was 19.0 cases per 100,000. Percent **positivity** for the locality is 6.2%. In Henrico, the daily case incidence rate is 20.7 cases per 100,000, and percent positivity for the locality is 6.6% and decreasing. Case incidence and percent positivity are following an increasing trend in both localities.
- The number of **PCR tests administered** across providers has also dropped notably in both districts in the last month, compared to the preceding three months.
- During the month of March, **cases** in both districts increased and then plateaued after decreasing since a peak in January. Compared to last month, based on VEDSS data by date, cases in Richmond dropped from a 7 day average of 21.9 to 19 daily new cases per 100,000 population. In Henrico, cases dropped from 21.5 to 20.7 new cases per day, per 100,000.
 - Regarding **case demographics**, females comprise a higher proportion of cases compared to males, both in the last month and cumulatively in both districts. 20-29 year olds continue to have the highest proportion of cases by age group. In Henrico, 20-29 year olds continue to lead, though closely followed by 30-39 year olds. Regarding race and ethnicity, in Richmond, the highest proportion of cases is still among Black individuals, again both cumulatively and in the last 4 weeks. Section 3.9 shows weekly trends in case counts by race and ethnicity.
- **Hospitalization** trends among Richmond patients are plateauing in both districts, based on VEDSS data. Looking more broadly at the 11 hospitals that comprise the Richmond catchment area, hospitalizations are fluctuating. ICU hospitalizations and ventilator utilizations have increased slightly over the month. All 11 hospitals are currently operating at a normal clinical status. Regarding **hospitalization demographics**, cumulative hospitalizations are highest among females and Black individuals in both districts. The median age of hospitalization is 61 in Richmond and 68 in Henrico.
- A substantial number of **COVID-19 deaths** were reported in previous months, with dates of death ranging from early December to early March. More recent trends, though, generally show a decline in deaths in both districts with some fluctuations after a much higher peak in early January. Cumulatively, deaths are highest among male individuals and Black individuals in Richmond and highest among female individuals and White individuals in Henrico. The median age of death in Richmond is 77, while in Henrico it is 81.
- Richmond and Henrico Health Districts are currently **vaccinating** people in Phase 1A, 1B, and 1C. Eligible people include healthcare workers, people living and working in long-term care facilities, people over the age of 65, and other essential workers. As of April 5, 2021, 34.0% of the region's population has received at least one dose of the vaccine. 17.8% of the region's population has been fully vaccinated. 32.3% of Richmond and Henrico's combined population has also received at least one dose. 17.7% of the two districts combined population has been fully vaccinated. The majority of vaccine recipients in Richmond City have been female and people 30-39, though people 60-69 follow close behind, while the majority in Henrico County have been female and people 60-69 years old. Available data indicate that eligible White individuals have received the majority of the vaccine, but a large percentage of recipients' race/ethnicity is still unreported.

1.0 COVID-19 SNAP SHOT

1.1 CONFIRMED CASES, HOSPITALIZATIONS, FATALITIES, AND PROBABLE CASES BY COUNTY

| CASE STATUS | RICHMOND CITY | HENRICO COUNTY | VIRGINIA |
|-------------------------------|---------------|----------------|----------|
| New cases this month | 1111 | 2101 | 48997 |
| New cases this week (April 5) | 304 | 475 | 9662 |
| All cases | 15959 | 23543 | 626171 |
| Confirmed cases | 13149 | 17271 | 488788 |
| Hospitalizations | 732 | 939 | 25316 |
| Deaths | 216 | 508 | 8699 |
| Probable cases | 2810 | 6272 | 137383 |
| Hospitalizations | 17 | 39 | 1409 |
| Deaths | 35 | 73 | 1661 |
| Case rate per 100,000 | 6925.6 | 7116.6 | 7336.1 |

Weekly cases added are estimated as the difference between the cases recorded from the current and prior week

*Case Rate per 100,000=(confirmed+probable)/population count *100,000.*

Population estimates for the case rate are the most recent as of July 1, 2019 from the [U.S Census Bureau QuickFacts](#)

1.2 CURRENT COVID-19 HOSPITALIZATIONS IN THE RICHMOND CATCHMENT AREA ON APRIL 4, 2021

The data included in this section comes from VHASS and it includes data from the following hospitals: VCU Health System, Retreat Doctors', Bon Secours Community, CWJ Chippenham, CWJ Johnson Willis, VA Medical Center, Bon Secours St. Mary's, Henrico Doctors, and Parham Doctors, Bon Secours St. Francis, and Memorial Regional Medical Center.

| | TOTAL IN USE FOR COVID-19 | CURRENTLY AVAILABLE |
|----------------------------|---------------------------|---------------------|
| Confirmed Hospitalizations | 162 | 143 |
| Pending Hospitalizations | 37 | |
| Confirmed - ICU | 46 | 34 |
| Pending - ICU | * | |
| Confirmed - Ventilators | 28 | 463 |
| Pending - Ventilators | 0 | |

Within these 11 hospitals that comprise the Richmond catchment area, there are currently 46 available adult ICU beds, and 463 available ventilators. Based on the VHASS hospital dashboard on April 4th, all hospitals are operating at normal clinical status.

*Counts <5 have been suppressed.

**A clinical status of “normal” indicates that hospital clinical resources are operating within normal conditions. A clinical status of “full” indicates that hospital clinical resources are exceeded and acceptable care cannot be provided to additional patients. Diversion or Community surge response is required.

2.0 COVID-19 TESTING ENCOUNTERS AND POSITIVITY

2.1 TESTING SUMMARY

Total tests by testing modality and the associated 7-day average in percent positivity are summarized in the table below. Data are from the [VDH public dashboard](#) on March 1, 2021.

| | RICHMOND CITY | | HENRICO COUNTY | |
|------------------------------------|---------------|------------|----------------|------------|
| | Tests | Positivity | Tests | Positivity |
| PCR* | 206,887 | 6.0% | 297,206 | 6.8% |
| Antigen | 31,366 | 6.6% | 69,486 | 6.2% |
| Total (PCR, antigen, and antibody) | 242,354 | 6.3% | 375,081 | 6.9% |

*All testing metrics included in previous reports have been based on PCR tests

2.2 NUMBER OF PCR TESTS RELATIVE TO STATEWIDE TESTING GOAL

The counts below are based on the total number of testing encounters provided by the Virginia Department of Health for Richmond City and Henrico County. **It is important to note that the number of testing encounters is different from the number of people tested, as some individuals may be tested more than once.** The counts below should be viewed as an approximation of the percentage of each county’s population that has been tested and may be higher than the actual percentage of the population tested.

| MONTH | RICHMOND CITY - TOTAL PCR TESTS/MONTH | HENRICO COUNTY - TOTAL PCR TESTS/MONTH |
|---------------|--|---|
| February 2021 | 22,475 | 31,293 |
| January 2021 | 35,001 | 50,108 |
| December 2020 | 29,921 | 40,568 |
| November 2020 | 35,419 | 30,871 |

The testing date was not reported for 483 PCR testing encounters in Richmond and not reported for 909 PCR testing encounters in Henrico, inclusive of all PCR tests since January 2020.

3.0 COVID-19 CASES

3.1 SUMMARY OF CASES

During the month of March, cases in both districts increased and then plateaued after decreasing from a peak in January. Compared to last month, cases in Richmond dropped from a 7-day average of 21.9 to 19 daily new cases per 100,000 population. In Henrico, cases dropped from 21.5 to 20.7 new cases per day, per 100,000.

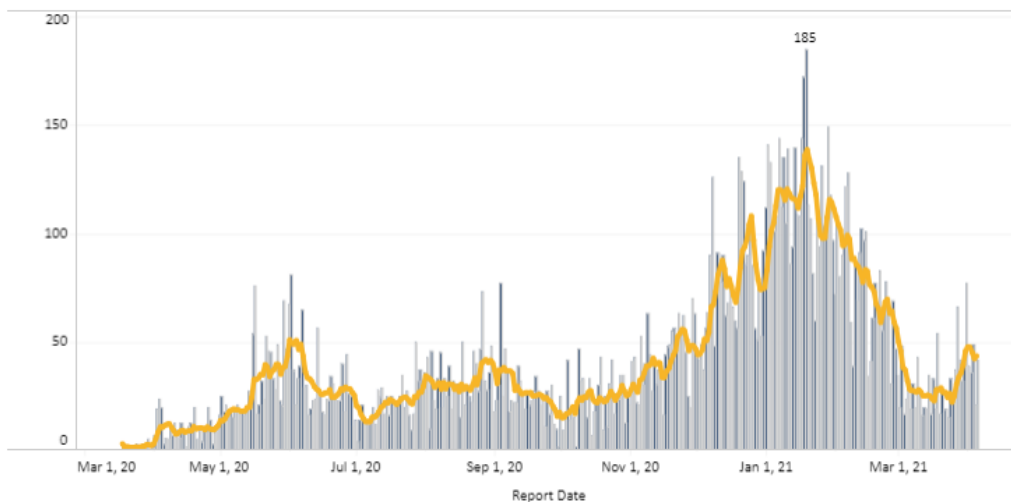
Females comprise a higher proportion of cases compared to males, both in the last month and cumulatively in both districts. 20-29 year olds continue to have the highest proportion of cases by age group. In Henrico, 20-29 year olds continue to lead, though closely followed by 30-39 year olds. Regarding race and ethnicity, in Richmond, the highest proportion of cases is still among Black individuals, again both cumulatively and in the last 4 weeks.

3.2 CASE REPORTS TRENDS BY DATE (SOURCE-VDH WEBSITE)

The report date corresponds to the date the case count was reported publicly. The report date does not have any equivalent variable in VEDSS, and cannot be directly linked to case-specific dates (e.g., event dates or lab report dates). Case counts by report date are estimated by subtracting the cumulative cases on the previous day from that of the current day. The 7-day moving average is a recurrent average of the number of cases for each 7-day data sequence.

| Number of New Cases Reported [^] | 7-Day Average Number of Daily New Cases Reported | 7-Day Average Number of New Daily Cases Reported, Rate per 100,000 Population | Total Number of New Cases per 100,000 Population within last 14 days |
|---|--|---|--|
| 42 | 44 | 19.0 | 242.6 |

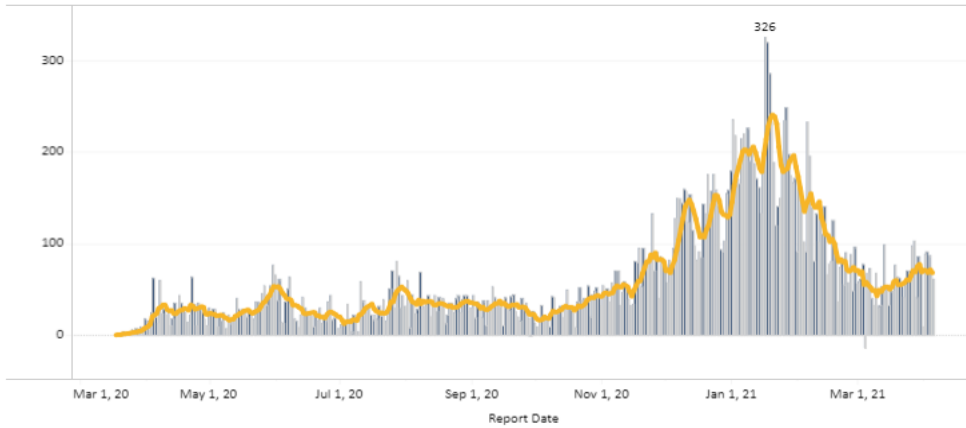
Report Date Daily Cases Counts - Richmond City



- After a decline throughout the month of February, recent data suggests an increase and/or fluctuations in case numbers in the Richmond City area, with a recent 7-day average of 19 cases per 100,000 people.

| Number of New Cases Reported^ | 7-Day Average Number of Daily New Cases Reported | 7-Day Average Number of New Daily Cases Reported, Rate per 100,000 Population | Total Number of New Cases per 100,000 Population within last 14 days |
|-------------------------------|--|---|--|
| 61 | 68 | 20.7 | 304.3 |

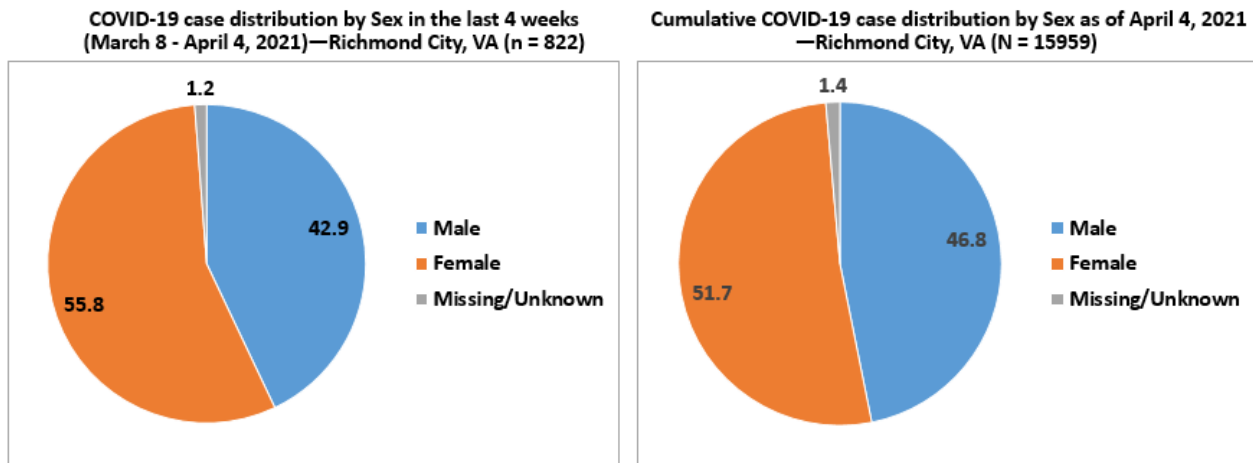
Report Date Daily Cases Counts - Henrico



- In Henrico County, cases largely declined over the course of February, yet have recently shown an increase into a potential plateau, with a recent 7-day average of 20.7 cases per 100,000 people.

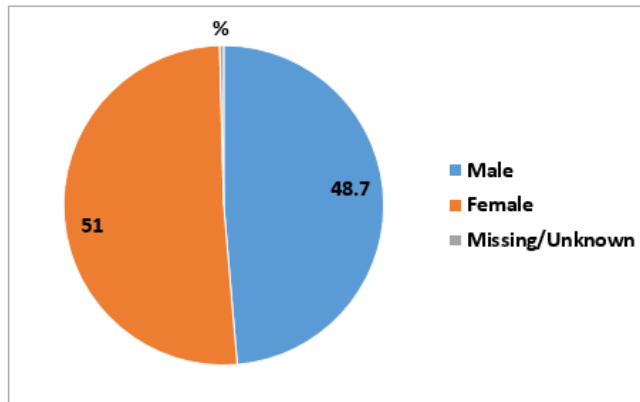
3.3 CASES BY SEX BY COUNTY

All percentages are based on overall case distribution, rather than the proportion of known cases for each measure, and therefore may not correspond directly with VDH percentages.

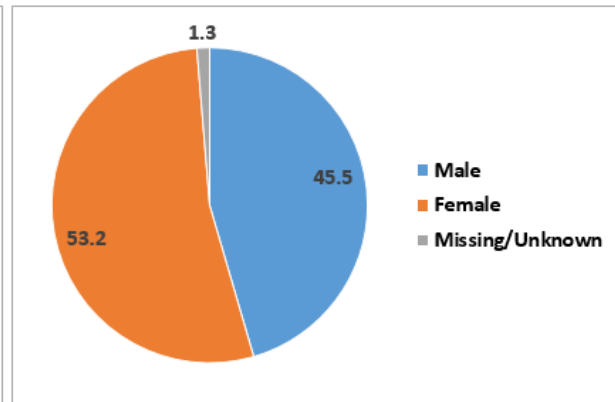


- In Richmond, females comprise a higher proportion of cases relative to males in the last 4 weeks (55.8% vs 42.9%), along with cumulatively (51.7% vs 46.8%).

COVID-19 case distribution by Sex in the last 4 weeks
(March 8 - April 4, 2021)—Henrico County, VA (n = 1419)



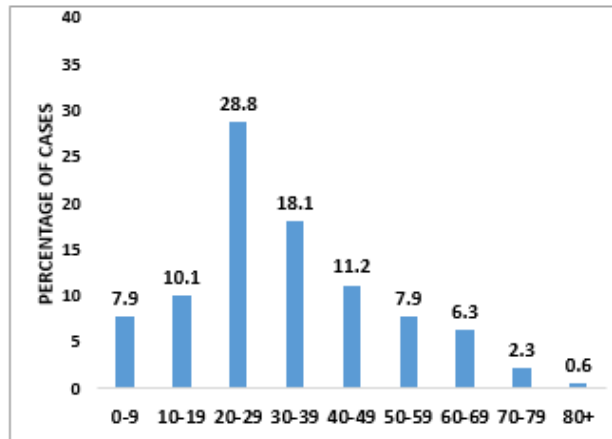
COVID-19 cases by Sex as of April 4, 2021
—Henrico County, VA (N = 23543)



- In Henrico, females comprise a higher proportion of cases relative to males both in the last 4 weeks (51% vs 48.7%) as well as cumulatively (53.2% vs 45.5%).

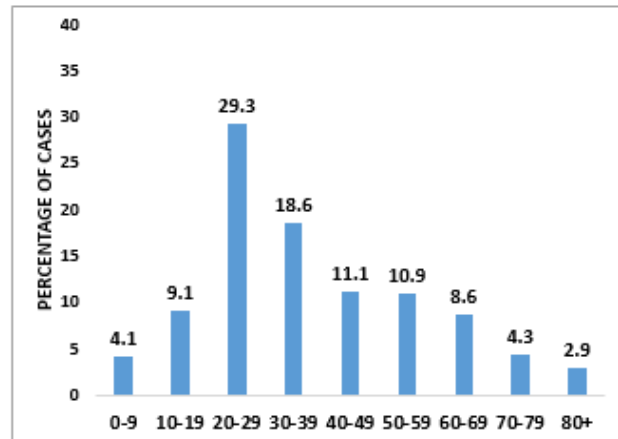
3.4 CASES BY AGE GROUP BY COUNTY

COVID-19 case distribution by Age in the last 4 weeks
(Mar 08 – Apr 04, 2021)—Richmond City, VA (N=822)



Age is missing for 6.7% (n=55) cases

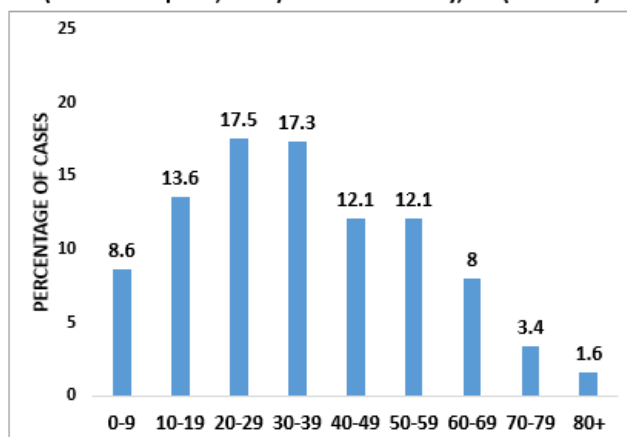
Cumulative COVID-19 case distribution by Age as of
April 4, 2021 —Richmond City, VA (n= 15959)



Age is missing for 1.2% (n=193) cases

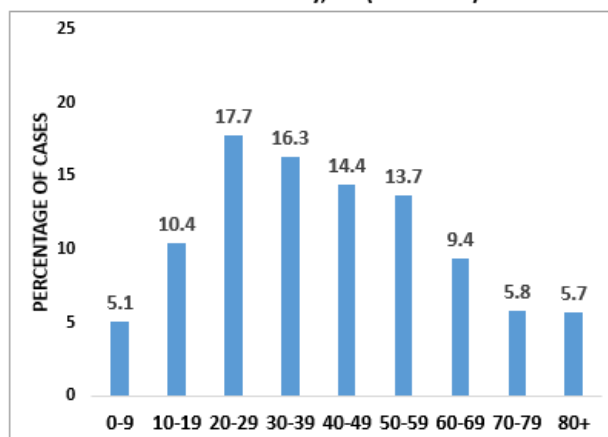
- In Richmond, individuals aged 20-29 comprise the highest number of cases in the last four weeks (28.8%) and cumulatively (29.3%), followed by individuals aged 30-39 years (18.1%) in the last four weeks and (18.6%) cumulatively.

**COVID-19 case distribution by Age group in the last 4 weeks
(March 8 - April 4, 2021)—Henrico County, VA (n = 1225)**



Age is missing for 5.8% (n=82) cases

**COVID-19 cases by Age group as of April 4, 2021
—Henrico County, VA (N = 23543)**

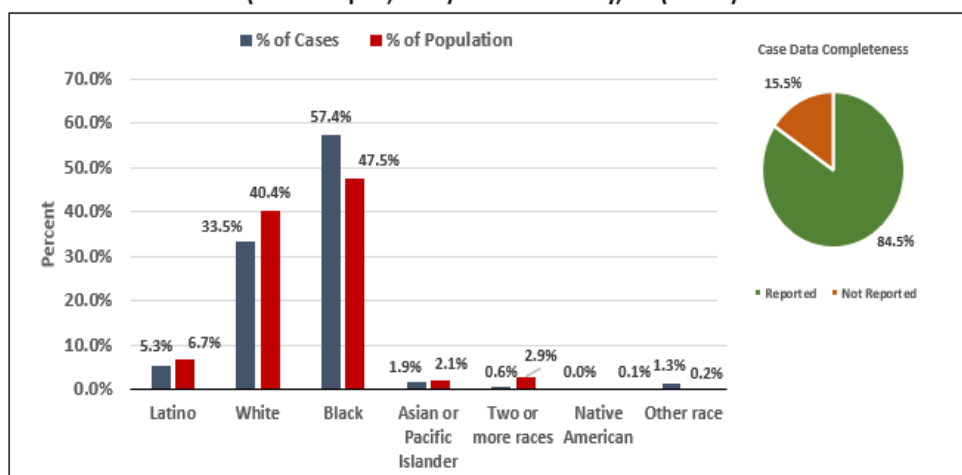


Age is missing for 1.5% (n=348) cases

- In Henrico, individuals aged 20-29 comprise the highest number of cases in the last four weeks (17.5%) and cumulatively (17.7%). Over the last four weeks, the percentage of cases among individuals aged 30-39 (17.3%) was nearly identical to that of cases among 20-29 year olds, and cumulatively 30-39 year olds comprise the second largest case burden (16.3%).

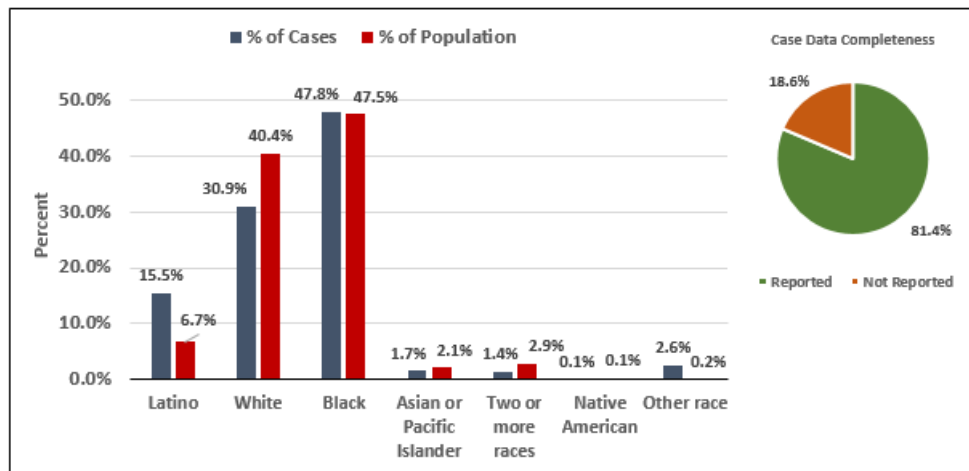
3.5 CASES AND POPULATION PROPORTIONS BY RACE AND ETHNICITY BY COUNTY

**COVID-19 case distribution by Race and Ethnicity in the last 4 weeks
(Mar 8 – Apr 4, 2021)—Richmond City, VA (N=822)**



*For race/ethnicity identification among cases, "Not Reported" comprises 15.5% (n=127).
*Missing and Unknown Ethnicities were assumed to be of Non-Hispanic ethnicity

**Cumulative COVID-19 case distribution by Race and Ethnicity
as of April 4, 2021 —Richmond City, VA (n= 15959)**

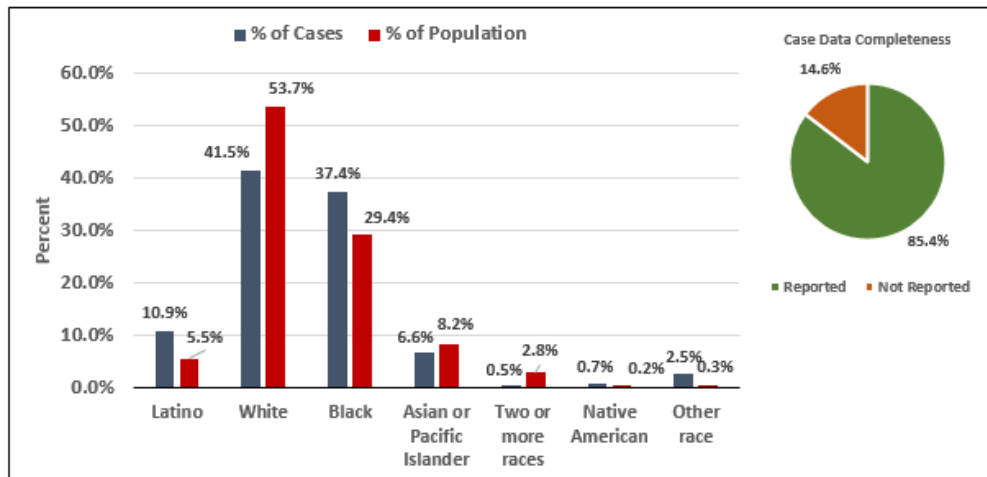


*For race/ethnicity identification among cases, "Not Reported" comprises 18.6% (n=2968).

*Missing and Unknown Ethnicities were assumed to be of Non-Hispanic ethnicity

- In Richmond, the proportion of cases among Black individuals in the last 4 weeks represents the highest case burden at (57.4%). Black individuals also comprise the majority of cumulative cases (47.8%) followed by White (30.9%) individuals.

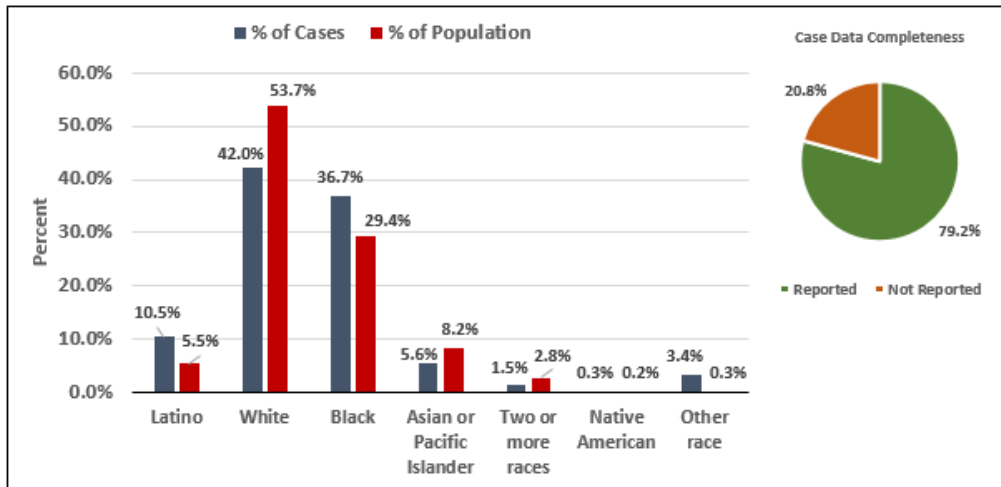
**COVID-19 case distribution by Race and Ethnicity in the last 4 weeks
(Mar 8 – Apr 4, 2021)— Henrico County, VA (N=1419)**



*For race/ethnicity identification among cases, "Not Reported" comprises 14.6% (n=207).

*Missing and Unknown Ethnicities were assumed to be of Non-Hispanic ethnicity

Cumulative COVID-19 case distribution by Race and Ethnicity as of April 4, 2021—Henrico County, VA (n=23543)

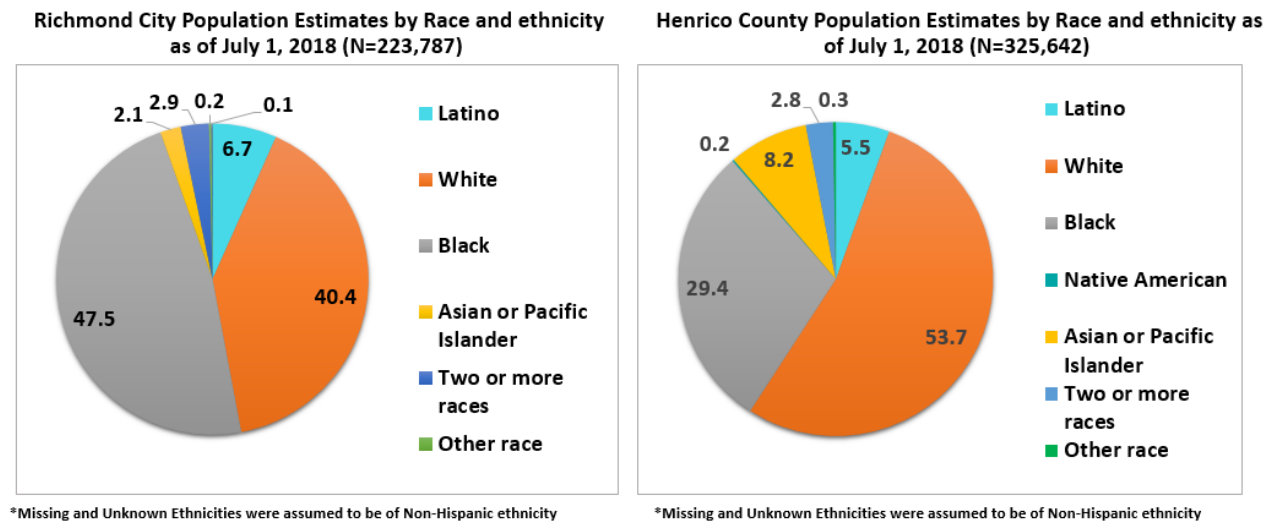


*For race/ethnicity identification among cases, "Not Reported" comprises 20.8% (n=4888).

*Missing and Unknown Ethnicities were assumed to be of Non-Hispanic ethnicity

- In Henrico, the proportion of cases among White individuals in the last 4 weeks represents the highest case burden at (41.5%). White individuals also comprise the majority of cumulative cases (42%) followed by Black (36.7%) individuals. Not reported cases constitute a significant number of cases as well at (14.6%) in the last four weeks and (20.8%) cumulatively.

Population estimates for the Race and Ethnicity subgroup analyses are from the [2018 ACS 5-year estimates](#)



4.0 COVID-19 HOSPITALIZATIONS

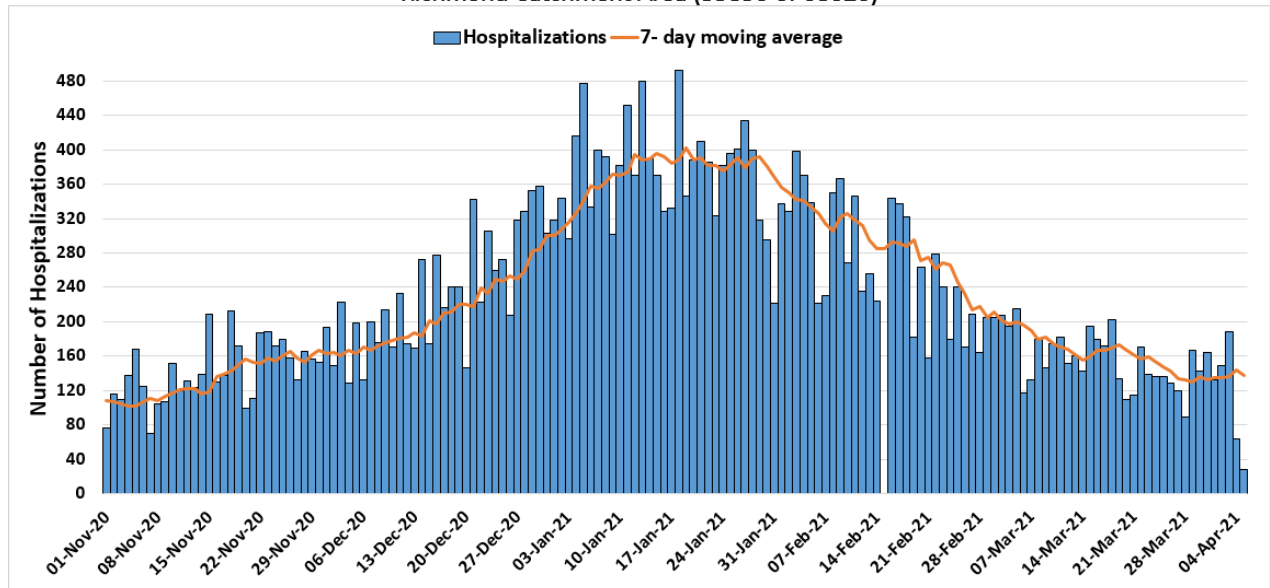
4.1 SUMMARY OF HOSPITALIZATION

Among the 11 hospitals that comprise the Richmond catchment area, hospitalizations have declined, though ICU hospitalizations and ventilator utilizations have increased slightly over the past week (see [VDH Dashboard](#) for additional trend data). As summarized at the beginning of this report, all 11 hospitals are operating at a normal clinical status.

Regarding hospitalization demographics, cumulative hospitalizations are highest among females and Black individuals in both districts. The median age of hospitalization is 61 in Richmond and 68 in Henrico.

4.2 HOSPITALIZATIONS (CONFIRMED AND PENDING) BY DAY IN THE RICHMOND CATCHMENT AREA AS OF APRIL 4, 2021

Total Daily COVID-19 Hospitalizations, November 1st, 2020 – April 4th, 2021
Richmond Catchment Area (35850 of 68626)



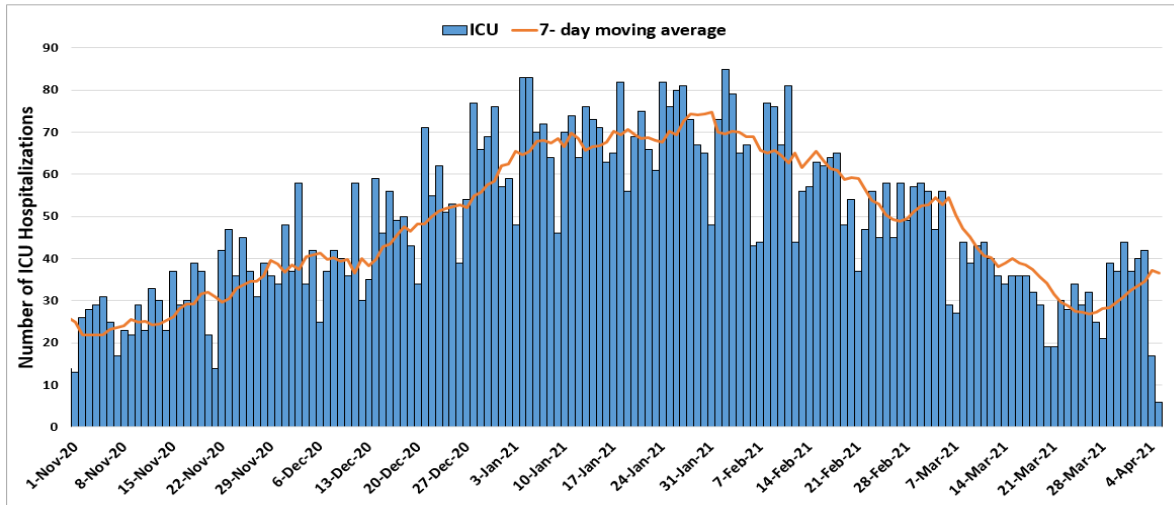
* Data points from March until October 31th are excluded to allow for clarity in trends/patterns

* Data points from February 15th, 2021 were omitted due to issues with data quality

- Data from the 11 hospitals included in this analysis has shown an overall downward trend since a peak in January. This downward trend has been consistent, despite minor fluctuations throughout March and early April.

4.3 ICU HOSPITALIZATIONS (CONFIRMED AND PENDING) BY DAY IN THE RICHMOND CATCHMENT AREA AS OF APRIL 4, 2021

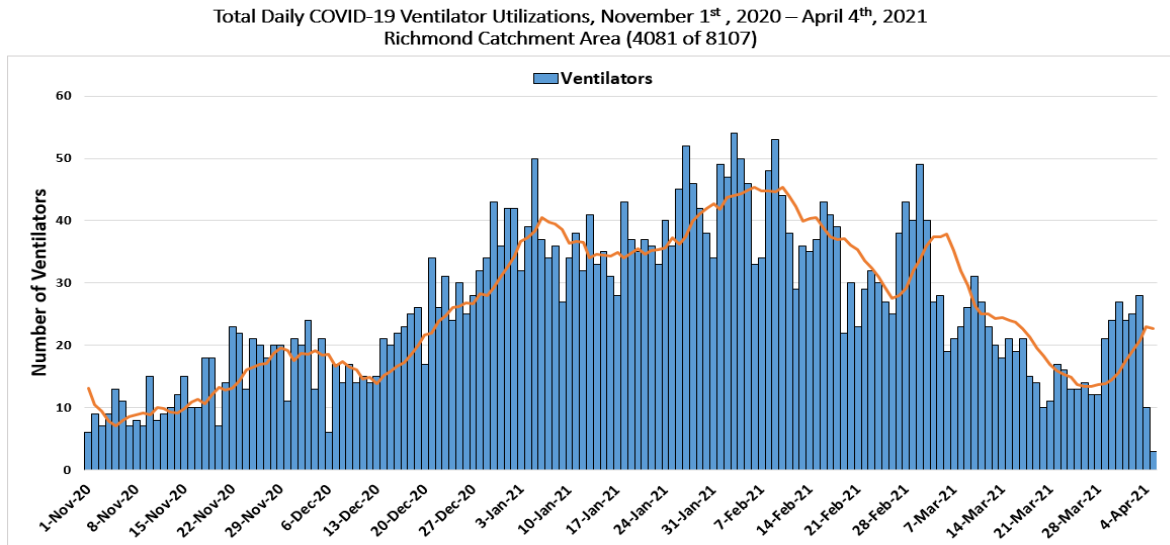
Total Daily COVID-19 ICU Hospitalizations, November 1st, 2020 – April 4th, 2021
Richmond Catchment Area (7070 of 16338)



* Data points from March until October 31th 2020 are excluded to allow for clarity in trends/patterns

- Following a recent peak and mild fluctuations during the month of January through late February, ICU hospitalizations have generally been decreasing throughout the month of March.

4.4 VENTILATOR UTILIZATIONS (PATIENTS ON VENTILATORS) BY DAY IN RICHMOND CATCHMENT AREA AS OF APRIL 4, 2021



- Ventilator utilization showed major fluctuations throughout the months of January and February, despite a recent uptick during the last week in March, ventilator utilizations generally appeared to be following a downward trend.

4.5 HOSPITALIZATIONS BY SEX, RACE, AND AGE BY COUNTY

The minimum age ranges correspond to ages in months, which have been converted to years.

| CONFIRMED AND PROBABLE | RICHMOND (n= 749) | HENRICO (n= 979) |
|---------------------------|-------------------|------------------|
| Gender | | |
| Male | 362 | 477 |
| Female | 386 | 501 |
| Missing | 1 | 1 |
| Median Age (range) | 61 (0.2 - 96) | 68 (0.1 - 104) |
| Race | | |
| White | 113 | 372 |
| Black | 473 | 442 |
| Latino | 133 | 76 |
| Asian or Pacific Islander | 6 | 28 |
| Other race | 9 | 31 |
| Two or more races | 5 | 11 |
| Not reported | 9 | 15 |

Women comprise a majority of hospitalizations in both Richmond and Henrico. In Richmond, Black individuals comprise the majority of hospitalizations, which is also the case in Richmond. The median age of hospitalization for Richmond and Henrico is sixty-one and sixty-eight, respectively.

5.0 COVID-19 FATALITIES

5.1 SUMMARY OF FATALITIES

A substantial number of COVID-19 deaths were reported in previous months, with dates of death ranging from early December to early March. More recent trends, though, generally show a decline in deaths in both districts with some fluctuations after a much higher peak in early January (see [VDH Dashboard](#) for additional trend data). Cumulatively, deaths are highest among male individuals and Black individuals in Richmond and highest among female individuals and White individuals in Henrico. The median age of death in Richmond is 77, while in Henrico it is 81.

5.2 DEATHS BY SEX, RACE, AND AGE BY COUNTY

| CONFIRMED AND PROBABLE | RICHMOND (n= 251) | HENRICO (n= 581) |
|---------------------------|-------------------|------------------|
| Gender | | |
| Male | 128 | 266 |
| Female | 121 | 314 |
| Not reported | * | * |
| Median Age (range) | 77 (31 - 98) | 81 (21 - 106) |
| Race | | |
| White | 82 | 324 |
| Black | 148 | 208 |
| Latino | 12 | 23 |
| Asian or Pacific Islander | * | 16 |
| Other race | * | * |
| Two or more races | * | * |
| Not reported | * | 6 |

* Counts <5 have been suppressed.

6.0 VACCINATION

6.1 VACCINE SUMMARY

Richmond and Henrico Health Districts are currently vaccinating people in Phase 1A, 1B, and 1C. Eligible people include healthcare workers, people living and working in long-term care facilities, people over the age of 65, and other essential workers. Vaccine supply and distribution are summarized in the tables below.

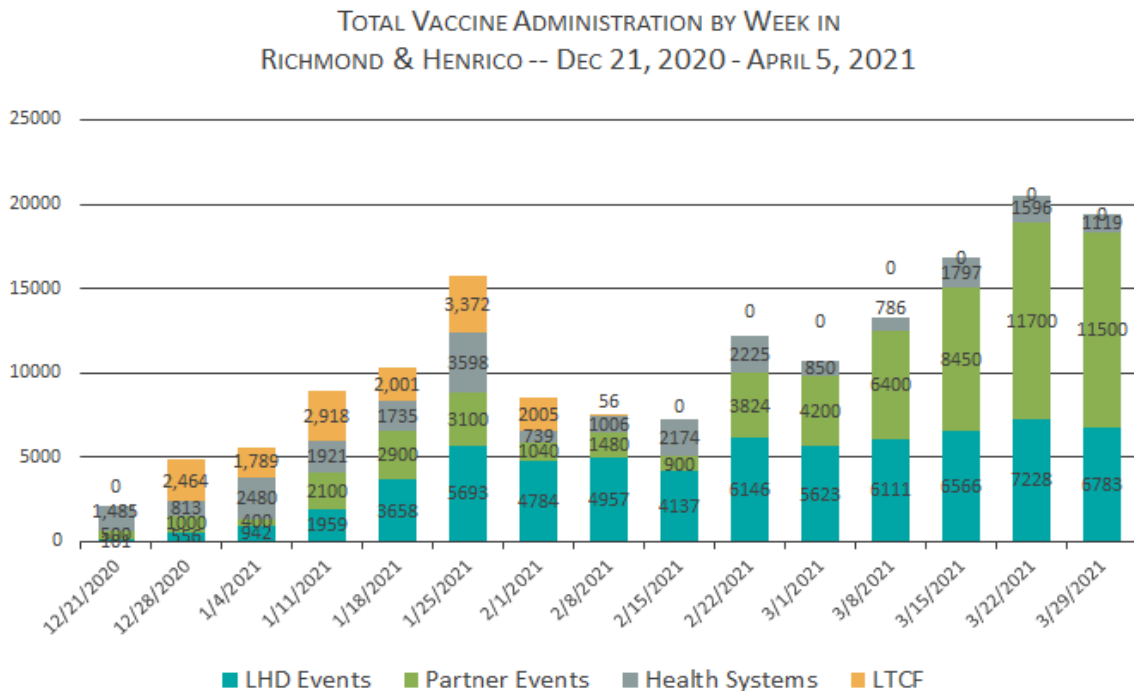
As of April 5, 2021, 34.0% of the region's population has received at least one dose of the vaccine. 17.8% of the region's population has been fully vaccinated. 32.3% of Richmond and Henrico's combined population has also received at least one dose. 17.7% of the two districts combined population has been fully vaccinated.

The majority of vaccine recipients in Richmond City have been female and people 30-39, though people 60-69 follow close behind, while the majority in Henrico County have been female and people 60-69 years old. Available data indicate that eligible White individuals have received the majority of the vaccine, but a large percentage of recipients' race/ethnicity is still unreported.

6.2 VACCINATIONS BY LOCALITY AS OF APRIL 5, 2021 - SOURCE: [VDH.VIRGINIA.GOV](https://www.vdh.virginia.gov)

| HEALTH DISTRICT | LOCALITY | POPULATION | FIRST DOSES ADMINISTERED | SECOND DOSES ADMINISTERED |
|-----------------|------------------|------------------|--------------------------|---------------------------|
| Chesterfield | Chesterfield | 352,802 | 125,143 | 57,102 |
| | Colonial Heights | 17,428 | 5,527 | 2,415 |
| | Powhatan | 28,815 | 9,782 | 5,659 |
| Chickahominy | Charles City | 6,963 | 2,385 | 1,755 |
| | Goochland | 23,753 | 10,271 | 6,382 |
| | Hanover | 107,766 | 39,820 | 21,954 |
| | New Kent | 23,091 | 7,681 | 4,787 |
| Henrico | Henrico | 330,818 | 114,476 | 63,377 |
| Richmond | Richmond City | 226,622 | 65,382 | 35,536 |
| Total | | 1,118,058 | 380,197 | 198,967 |

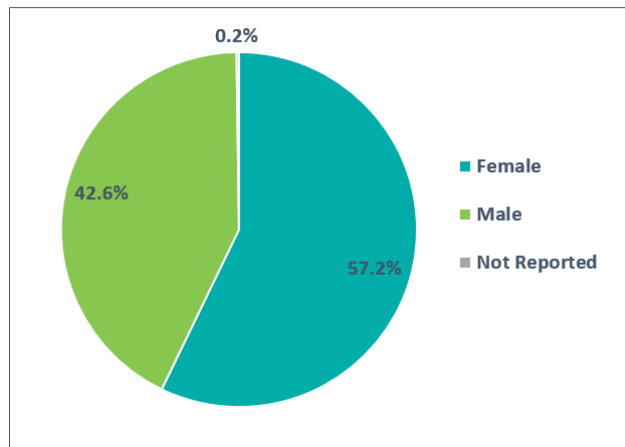
6.3 WEEKLY TOTALS BY VACCINATION PATHWAY FOR RICHMOND AND HENRICO - SOURCE: INTERNAL TRACKING, VIIS



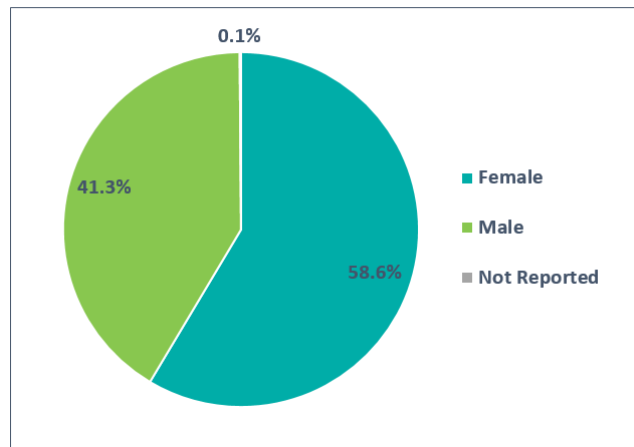
Health system totals reflect Richmond and Henrico residents who were vaccinated at one of the hospitals in the Richmond hospital catchment area - VCU Health System, Retreat Doctors', Bon Secours Community, CWJ Chippenham, CWJ Johnson Willis, Bon Secours St. Mary's, Henrico Doctors, and Parham Doctors, Bon Secours St. Francis, and Memorial Regional Medical Center. VA Medical Center is included in the COVID-19 hospitalization section of this report but vaccination data for this hospital is not yet available in VIIS.

6.4 VACCINE DISTRIBUTION BY DEMOGRAPHIC SUBGROUP - SOURCE: VIIS

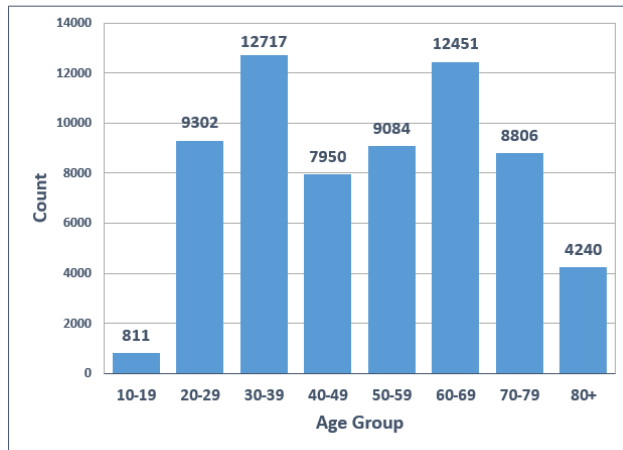
**Total Vaccine Recipients by Sex in Richmond
-- April 5, 2021 (N = 65361)**



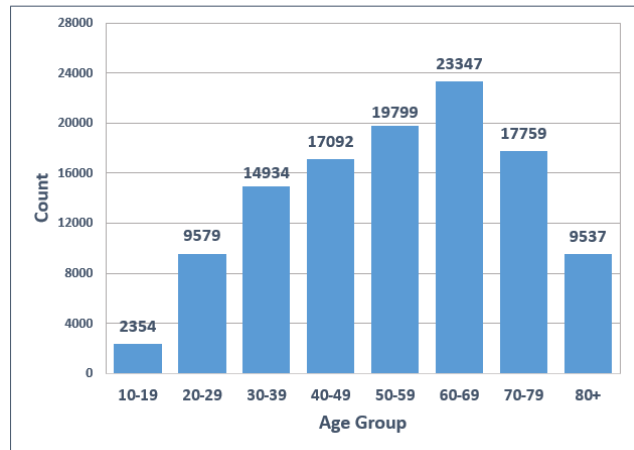
**Total Vaccine Recipients by Sex in Henrico
-- April 5, 2021 (N = 114401)**



**Total Vaccine Recipients by Age Group in Richmond
– April 5, 2021 (N = 65361)**

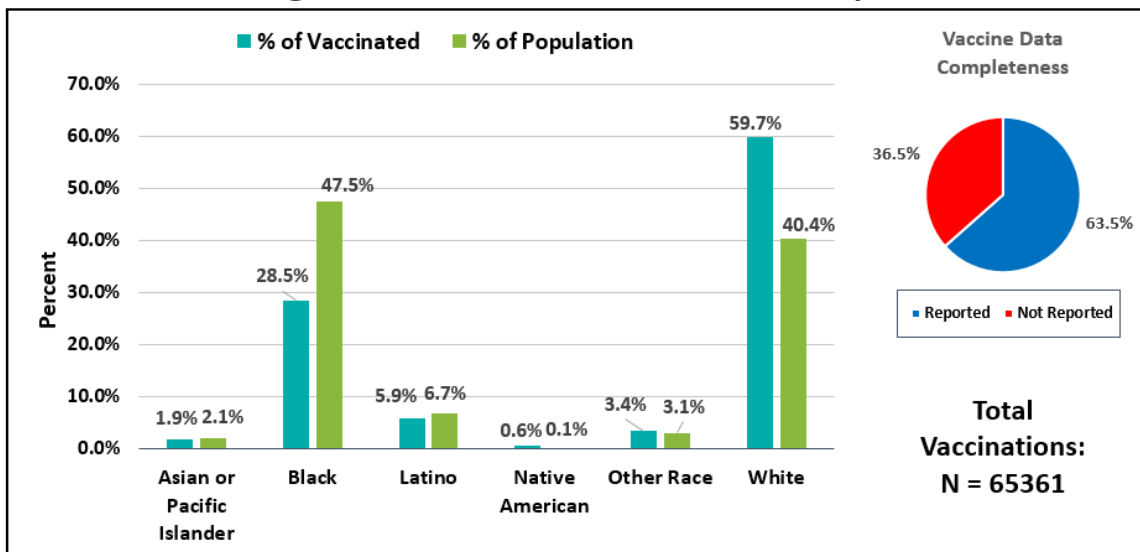


**Total Vaccine Recipients by Age Group in Henrico
– April 5, 2021 (N = 114401)**



The charts below compare the percentage breakdown of racial or ethnic identification of vaccinated individuals to the expected percentage breakdown of the racial or ethnic identification of the population. A notable discrepancy can be seen when looking at Black individuals, who comprise 47.5% of the Richmond population and 29.4% of the Henrico population yet only 28.5% of vaccine recipients in Richmond and 19.6% of vaccine recipients in Henrico.

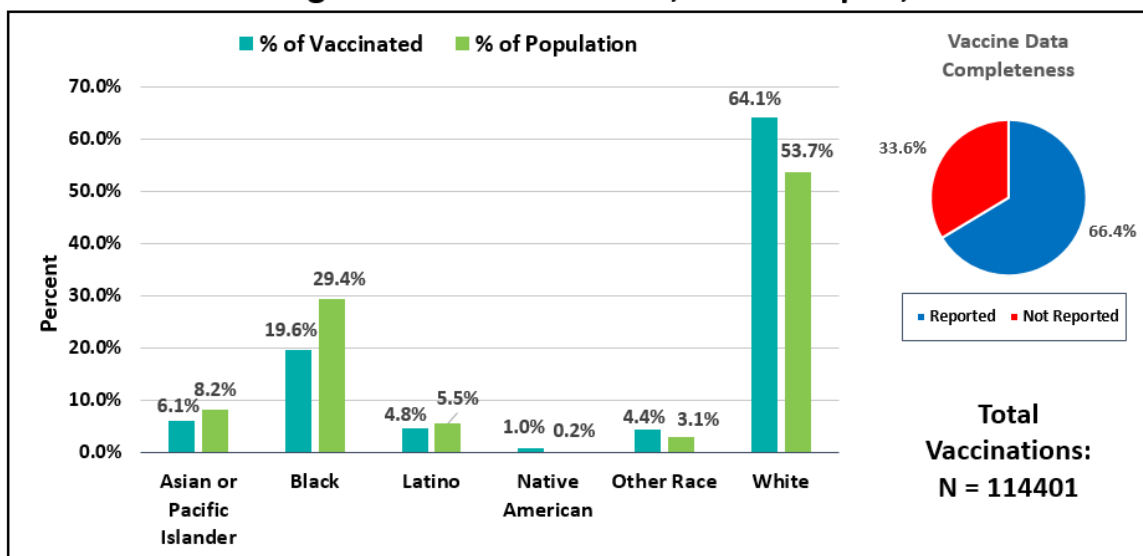
**Vaccine Recipients vs. Population by Race/Ethnicity
Percentages in Richmond – Dec 15, 2020 to Apr 5, 2021**



*For race/ethnicity of vaccine recipients, "Not Reported" comprises 36.5% (n=23881).

*Missing and Unknown Ethnicities were assumed to be of Non-Hispanic ethnicity.

Vaccine Recipients vs. Population by Race/Ethnicity Percentages in Henrico – Dec 15, 2020 to Apr 5, 2021

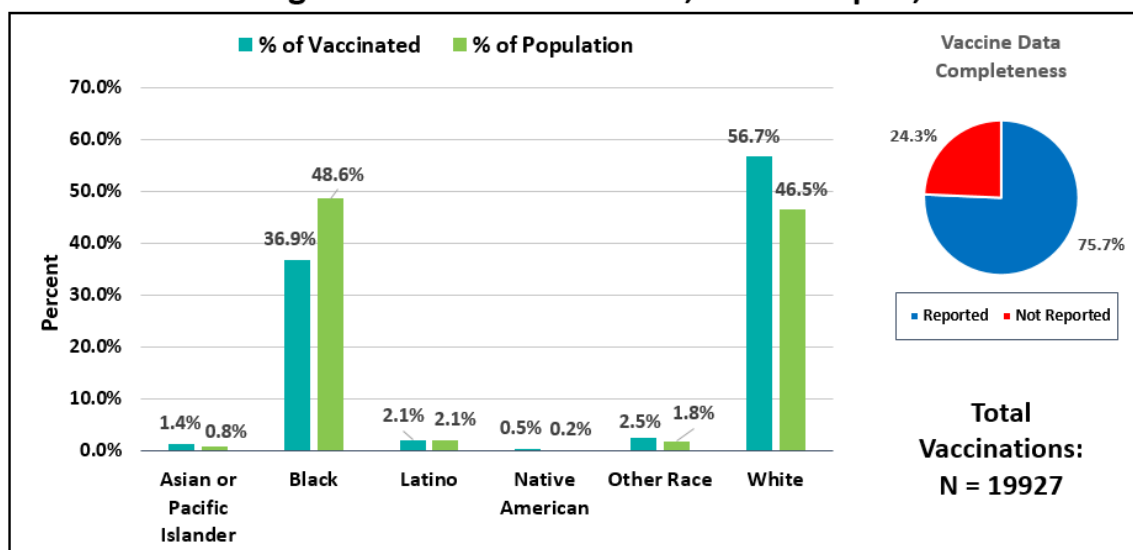


*For race/ethnicity of vaccine recipients, "Not Reported" comprises 33.6% (n=38471).

*Missing and Unknown Ethnicities were assumed to be of Non-Hispanic ethnicity.

The figures below compare the percentage breakdown by race and ethnicity specifically for individuals 65 and over. In Richmond City, Black individuals comprise 48.6% of the population of those aged 65 years and older, yet make up only 36.9% of vaccine recipients. This discrepancy can also be noted in Henrico, where Black individuals make up 25.6% of the population, yet thus far have only comprised 19.3% of vaccine recipients.

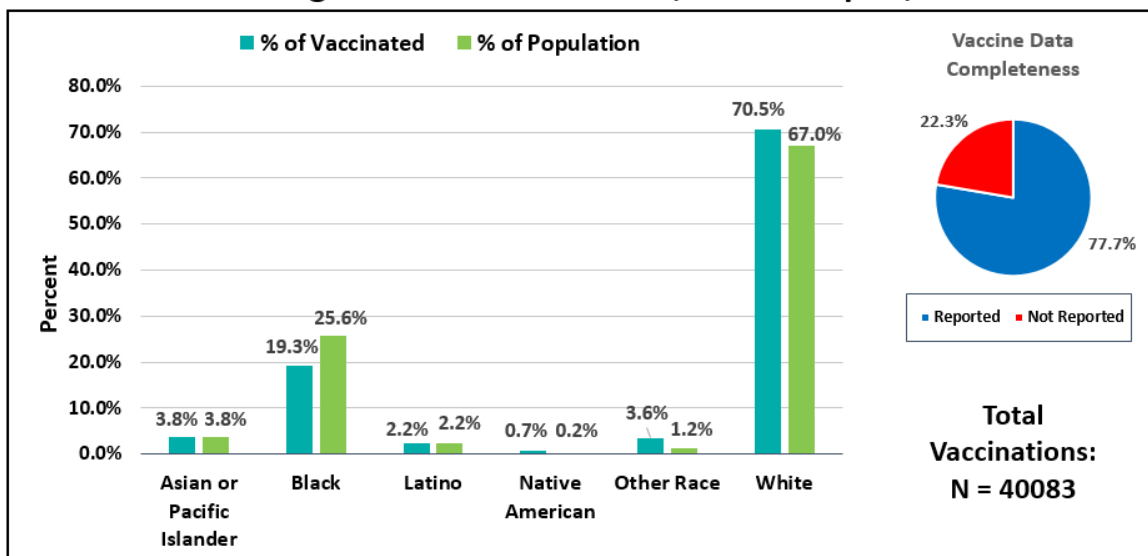
Vaccine Recipients vs. Population 65 and Over by Race/Ethnicity Percentages in Richmond – Dec 15, 2020 to Apr 5, 2021



*For race/ethnicity of vaccine recipients, "Not Reported" comprises 24.3% (n=5012).

*Missing and Unknown Ethnicities were assumed to be of Non-Hispanic ethnicity.

Vaccine Recipients vs. Population 65 and Over by Race/Ethnicity Percentages in Henrico – Dec 15, 2020 to Apr 5, 2021



*For race/ethnicity of vaccine recipients, "Not Reported" comprises 22.3% (n=9287).

*Missing and Unknown Ethnicities were assumed to be of Non-Hispanic ethnicity.

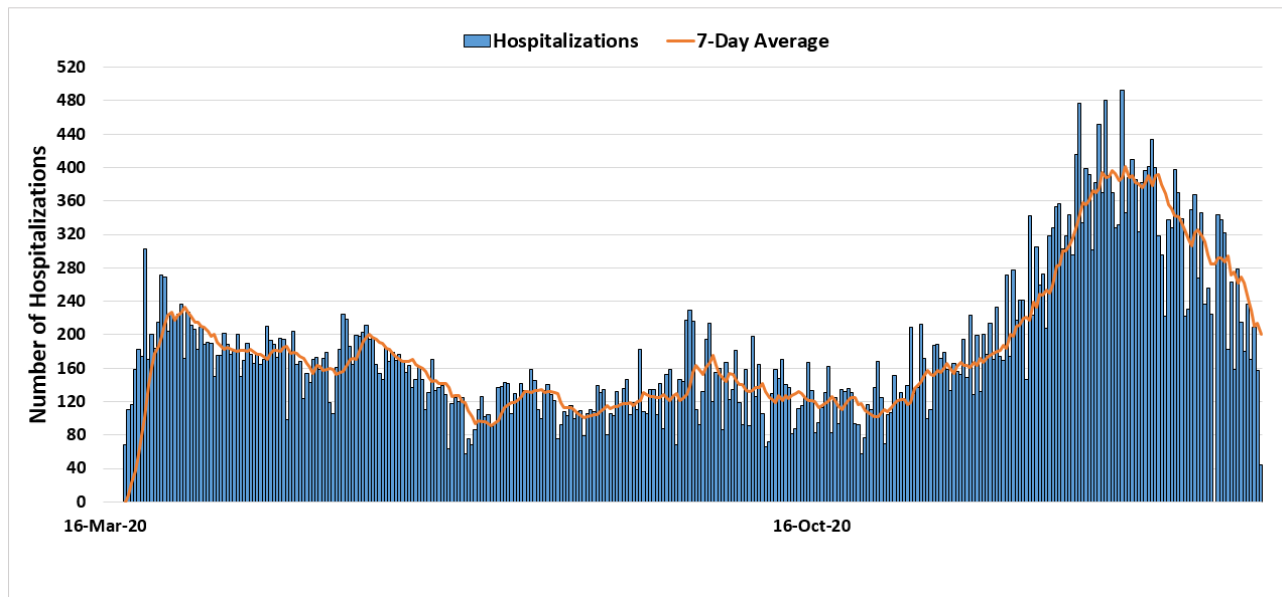
7.0 APPENDIX

7.1 CENSUS POPULATION ESTIMATES BY AGE AND RACE--RICHMOND CITY AND HENRICO COUNTY

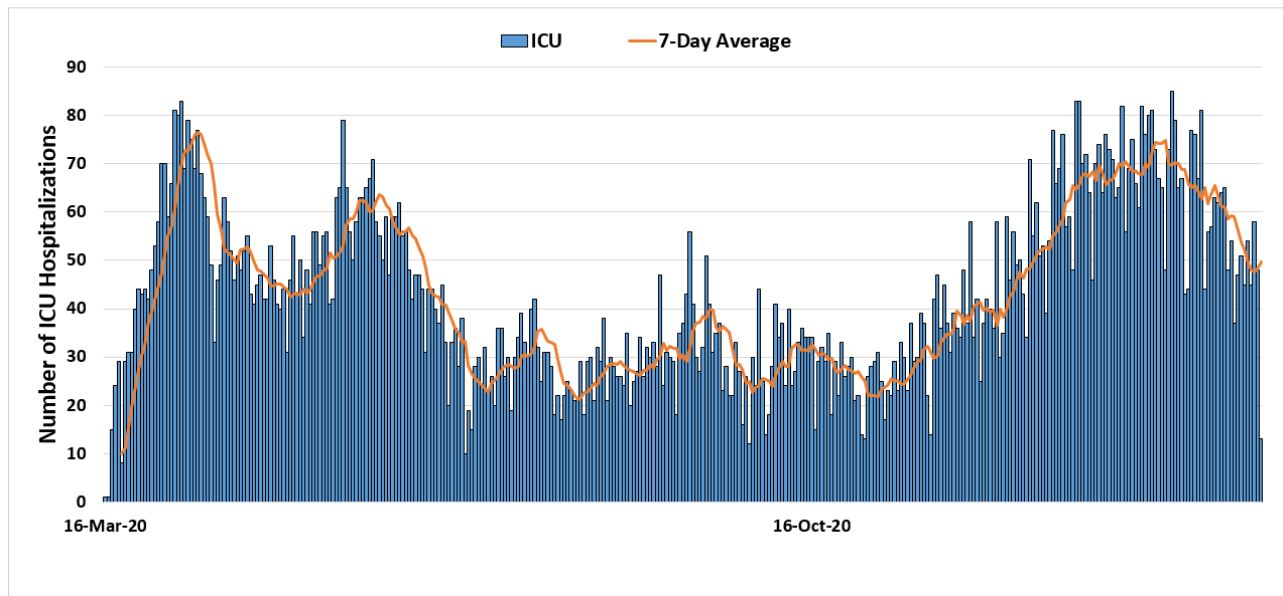
| Richmond City Population Estimates by Age and Race, as of July 1, 2018 (N=228,783) | | | | | Henrico County Population Estimates by Age and Race, as of July 1, 2018 (N=329,261) | | | | |
|--|--------|----------|----------|----------|---|--------|----------|----------|----------|
| Age group (Years) | LATINO | NH WHITE | NH BLACK | NH OTHER | Age group (Years) | LATINO | NH WHITE | NH BLACK | NH OTHER |
| 0-9 | 3807 | 6375 | 13310 | 1232 | 0-9 | 3764 | 17467 | 11946 | 6531 |
| 10-19 | 2282 | 6587 | 13047 | 1554 | 10-19 | 3464 | 18739 | 13872 | 5470 |
| 20-29 | 3417 | 21968 | 18657 | 3146 | 20-29 | 2870 | 19249 | 15019 | 5142 |
| 30-39 | 2817 | 19613 | 14235 | 1897 | 30-39 | 3360 | 22298 | 13542 | 7601 |
| 40-49 | 1901 | 10191 | 10525 | 831 | 40-49 | 2608 | 22194 | 12532 | 5766 |
| 50-59 | 1129 | 10805 | 14747 | 690 | 50-59 | 1696 | 25701 | 13509 | 3338 |
| 60-69 | 525 | 10589 | 13292 | 574 | 60-69 | 819 | 23639 | 10596 | 2368 |
| 70-79 | 218 | 5457 | 5866 | 271 | 70-79 | 391 | 14553 | 5349 | 1147 |
| 80+ | 79 | 3599 | 3369 | 181 | 80+ | 174 | 9618 | 2487 | 442 |

7.2 VHASS HOSPITALIZATION MEASURES - FULL DATA RANGE - MARCH 14 - PRESENT

Total Daily COVID-19 Hospitalizations, March 14th, 2020 – February 28th, 2021
Richmond Catchment Area (N = 63160)



Total Daily COVID-19 ICU Hospitalizations, March 14th, 2020 – February 28th, 2021
Richmond Catchment Area (N = 15063)



Total Daily COVID-19 Ventilator Utilizations, March 14th, 2020 – February 28th, 2021
Richmond Catchment Area (N = 7340)

