

# WEEKLY CASE REPORT FOR EXTERNAL USE

MON MAY 10 - MON MAY 17, 2021

## CONTENTS

<b>KEY TAKEAWAYS</b>	<b>2</b>
<b>1.0 COVID-19 SNAP SHOT</b>	<b>3</b>
1.1 CONFIRMED CASES, HOSPITALIZATIONS, FATALITIES, AND PROBABLE CASES BY COUNTY	3
1.2 CURRENT COVID-19 HOSPITALIZATIONS IN THE RICHMOND CATCHMENT AREA ON MAY 17, 2021	4
<b>2.0 COVID-19 TESTING ENCOUNTERS AND POSITIVITY</b>	<b>4</b>
2.1 TESTING SUMMARY	4
<b>3.0 COVID-19 CASES</b>	<b>5</b>
3.1 SUMMARY OF CASES	5
3.2 CASE REPORTS TRENDS BY DATE (SOURCE-VDH WEBSITE)	6
3.3 CASES BY SEX BY COUNTY	8
3.4 CASES BY AGE GROUP BY COUNTY	9
3.5 CASES AND POPULATION PROPORTIONS BY RACE AND ETHNICITY BY COUNTY	10
<b>4.0 COVID-19 HOSPITALIZATIONS</b>	<b>12</b>
4.1 SUMMARY OF HOSPITALIZATIONS	12
4.2 HOSPITALIZATIONS (CONFIRMED AND PENDING) BY DAY IN THE RICHMOND CATCHMENT AREA AS OF MAY 17, 2021	12
4.3 ICU HOSPITALIZATIONS (CONFIRMED AND PENDING) BY DAY IN THE RICHMOND CATCHMENT AREA AS OF MAY 17, 2021	13
4.4 VENTILATOR UTILIZATIONS (PATIENTS ON VENTILATORS) BY DAY IN THE RICHMOND CATCHMENT AREA AS OF MAY 17, 2021	13
<b>5.0 COVID-19 FATALITIES</b>	<b>14</b>
5.1 SUMMARY OF FATALITIES	14
<b>6.0 VACCINATION</b>	<b>14</b>
6.1 VACCINE SUMMARY	14
6.2 PERCENTAGE OF VACCINATION GOALS REACHED BY POPULATION	14
6.3 VACCINATIONS BY LOCALITY AS OF MAY 15, 2021 - SOURCE: VDH.VIRGINIA.GOV	15
6.3 VACCINE DISTRIBUTION BY DEMOGRAPHIC SUBGROUP	16
<b>7.0 APPENDIX</b>	<b>19</b>
7.1 CENSUS POPULATION ESTIMATES BY AGE AND RACE--RICHMOND CITY AND HENRICO COUNTY	19

## KEY TAKEAWAYS

- According to the [VDH Pandemic Metrics Dashboard](#), in Richmond, there were **33.6 new cases per 100,000 in the last week**. Cases have been decreasing for the last 40 days. Percent positivity for the locality is 3.5% and is also decreasing. In Henrico, there were **34.6 new cases per 100,000 in the last week**. Cases have been decreasing in Henrico for the last 43 days. Percent positivity for the locality is 3.0% and also decreasing.
- **Cases in both districts have continued to decline** since early May. The 7-day average of VEDSS data by date indicates cases in Richmond are occurring at a rate of 4.7 new cases per day, per 100,000 population and 4.9 new cases per day, per 100,000 population in Henrico.
  - In both Richmond and Henrico, **females comprise a higher proportion of cases**, both cumulatively and in the past month. Also in both districts, **20-29 year olds continue to lead case counts**, both cumulatively and in the last 4 weeks. Regarding **race and ethnicity**, in Richmond, the highest proportion of cases is still among Black individuals. In Henrico, the proportion of cases is highest among White individuals, cumulatively and in the last 4 weeks.
- Based on VEDSS data, **hospitalizations are decreasing among Richmond residents and fluctuating among Henrico residents**, though with few recent admissions in both districts (see [VDH Dashboard](#) for additional trend data). Looking more broadly, hospitalizations at health systems within the Richmond catchment area are also decreasing. ICU hospitalizations and the use of ventilators at these hospitals have plateaued in the last week. All 11 hospitals in the Richmond catchment area are still operating at a normal clinical status. *Hospitalizations by subgroup (sex, age, and race) are reported on a monthly basis.*
- Current trends in **COVID-19 deaths** are decreasing overall, with a 7-day average of 1 new in Richmond and Henrico according to the [VHD Dashboard](#). Please note that trends in death data are frequently impacted by a lag in reporting. *Deaths by subgroup (sex, age, and race) are reported on a monthly basis.*
- Richmond and Henrico Health Districts are in **Phase 2 of vaccination**. Anyone 12 or older is eligible to receive the vaccine, with individuals 12 to 15 years old newly eligible for the Pfizer vaccine, though vaccination data for this new age group is not yet available due to a standard lag in reporting. As of May 15, 49.2% of the region's population has received at least one dose of the vaccine and 39.5% of the region's population has been fully vaccinated. Approximately 46.6% of Richmond and Henrico's combined population has received at least one dose and 36.9% of the two districts combined population has been fully vaccinated.
  - The majority of vaccine recipients in both districts have been **female**. The highest counts of vaccine recipients have been among **30-39 year olds in Richmond and 60-69 and 50-59 year olds in Henrico**. Available data indicate that eligible **White individuals** have received the majority of the vaccine in both districts, but a large percentage of the recipients' race/ethnicity is still unreported.

## 1.0 COVID-19 SNAP SHOT

### 1.1 CONFIRMED CASES, HOSPITALIZATIONS, FATALITIES, AND PROBABLE CASES BY COUNTY

CASE STATUS	RICHMOND CITY	HENRICO COUNTY	VIRGINIA
New cases this week (May 16)	189	396	10102
All cases	16999	25325	605967
Confirmed cases	13984	18712	475385
Hospitalizations	783	1024	24520
Deaths	230	543	8484
Probable cases	3015	6613	130582
Hospitalizations	18	39	1300
Deaths	36	69	1643
Case rate per 100,000	7376.9	7655.3	7814.2

*Weekly cases added are estimated as the difference between the cases recorded from the current and prior week*

*Case Rate per 100,000=(confirmed+probable)/population count \*100,000.*

*Population estimates for the case rate are the most recent as of July 1, 2019 from the [U.S Census Bureau QuickFacts](#)*

## 1.2 CURRENT COVID-19 HOSPITALIZATIONS IN THE RICHMOND CATCHMENT AREA ON MAY 17, 2021

The data included in this section comes from VHASS and it includes data from the following hospitals: VCU Health System, Retreat Doctors', Bon Secours Community, CWJ Chippenham, CWJ Johnson Willis, VA Medical Center, Bon Secours St. Mary's, Henrico Doctors, and Parham Doctors, Bon Secours St. Francis, and Memorial Regional Medical Center.

	TOTAL IN USE FOR COVID-19	CURRENTLY AVAILABLE
Confirmed Hospitalizations	75	169
Pending Hospitalizations	9	
Confirmed - ICU	38	37
Pending - ICU	5	
Confirmed - Ventilators	21	463
Pending - Ventilators	*	

\*Counts <5 have been suppressed

Within these 11 hospitals that comprise the Richmond catchment area, there are currently 169 total available hospital beds, 37 available adult ICU beds, and 463 available ventilators. Based on the VHASS hospital dashboard on May 17, 2021, all 11 hospitals are operating at normal clinical status.\*

\*\*A clinical status of "normal" indicates that hospital clinical resources are operating within normal conditions. A clinical status of "full" indicates that hospital clinical resources are exceeded and acceptable care cannot be provided to additional patients. Diversion or Community surge response is required.

## 2.0 COVID-19 TESTING ENCOUNTERS AND POSITIVITY

### 2.1 TESTING SUMMARY

Total tests by testing modality and the associated 7-day average in percent positivity are summarized in the table below. Data are from the [VDH public dashboard](#) on May 17, 2021.

	RICHMOND CITY		HENRICO COUNTY	
	Tests	Positivity	Tests	Positivity
PCR*	249,248	3.5%	369,995	3.0%
Antigen	46,254	2.9%	95,101	3.9%
Total (PCR, antigen, and antibody)	299,985	3.7%	474,273	3.6%

\*All testing metrics included in previous reports have been based on PCR tests

### **3.0 COVID-19 CASES**

#### **3.1 SUMMARY OF CASES**

##### **Cases**

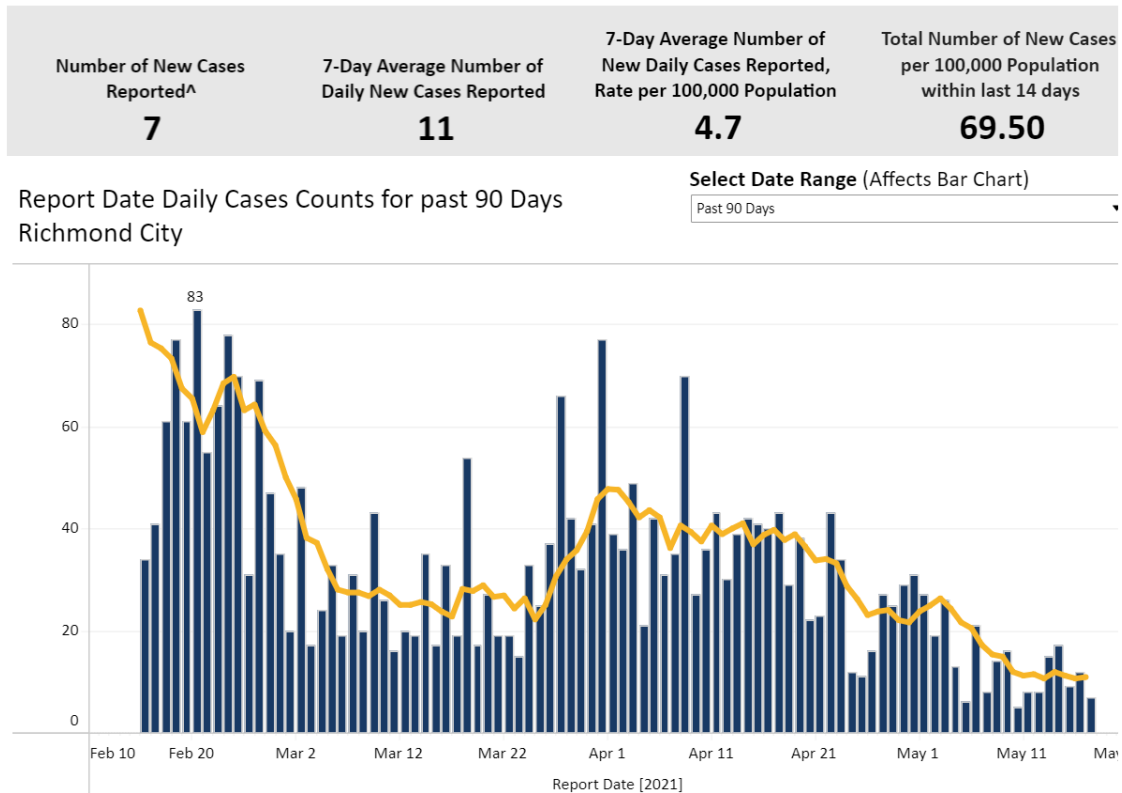
Cases in both districts have continued to decline since early May. The 7-day average of VEDSS data by date indicates cases in Richmond are occurring at a rate of 4.7 new cases per day, per 100,000 population and 4.9 new cases per day, per 100,000 population in Henrico.

##### **Case Demographics**

In both Richmond and Henrico, females comprise a higher proportion of cases, both cumulatively and in the past month. Also in both districts, 20-29 year olds continue to lead case counts, both cumulatively and in the last 4 weeks. Regarding race and ethnicity, in Richmond, the highest proportion of cases is still among Black individuals. In Henrico, the proportion of cases is highest among White individuals, cumulatively and in the last 4 weeks.

### 3.2 CASE REPORTS TRENDS BY DATE (SOURCE-VDH WEBSITE)

The report date corresponds to the date the case count was reported publicly. The report date does not have any equivalent variable in VEDSS, and cannot be directly linked to case-specific dates (e.g., event dates or lab report dates). Case counts by report date are estimated by subtracting the cumulative cases on the previous day from that of the current day. The 7-day moving average is a recurrent average of the number of cases for each 7-day data sequence.



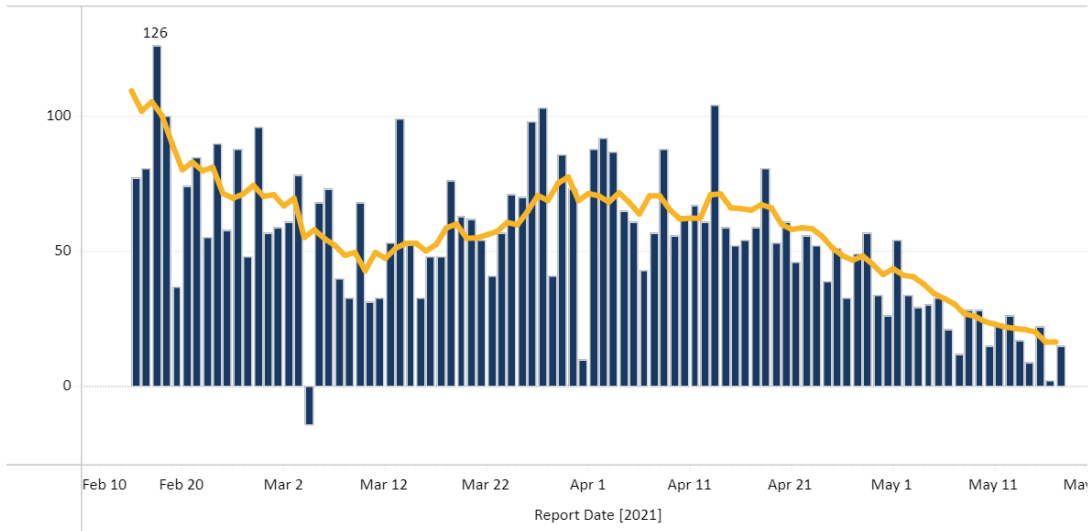
- In Richmond, the 7-day average number of daily new cases reported this week suggests an ongoing decrease in overall case counts, despite a brief increase during the first two weeks of April. A total of 7 new cases were reported on May 16, 2021, a third of what the new daily case number was two weeks ago. The 7-day average of new daily cases is 4.7 per 100,000 population.

Number of New Cases Reported^	7-Day Average Number of Daily New Cases Reported	7-Day Average Number of New Daily Cases Reported, Rate per 100,000 Population	Total Number of New Cases per 100,000 Population within last 14 days
<b>15</b>	<b>16</b>	<b>4.9</b>	<b>85.34</b>

Report Date Daily Cases Counts for past 90 Days  
Henrico

Select Date Range (Affects Bar Chart)

Past 90 Days

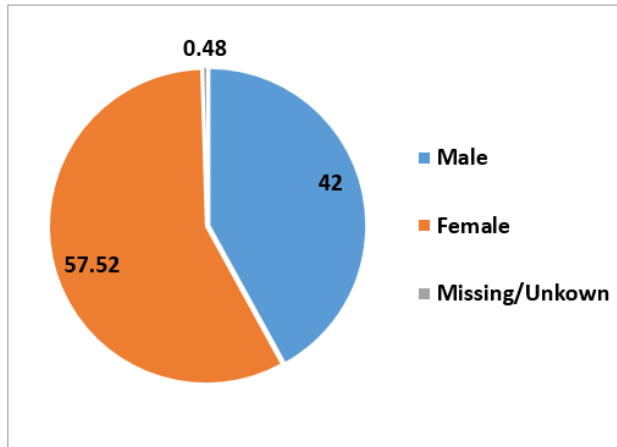


- In Henrico, new cases reported per day also appear to be decreasing, and appear to be maintaining a more stable downward trend. A total of 15 new cases were reported on May 16, 2021. The 7-day average number of cases reported daily in Henrico County is 4.9 per 100,000 population.
- The negative case count on March 3 is a result of cases being reassigned to other health districts.

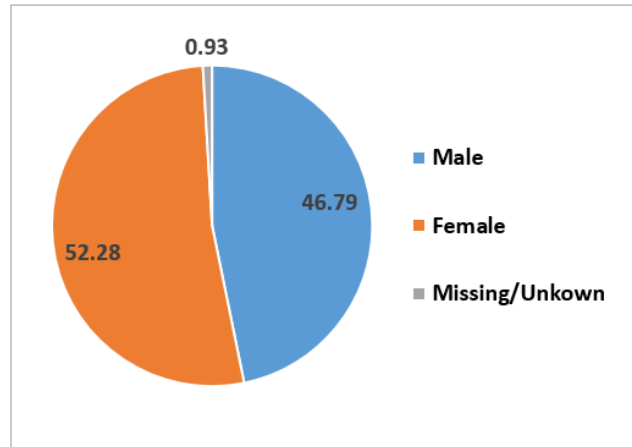
### 3.3 CASES BY SEX BY COUNTY

*All percentages are based on overall case distribution, rather than the proportion of known cases for each measure, and therefore may not correspond directly with VDH percentages.*

COVID-19 case distribution by Sex in the last 4 weeks  
(Apr 19 – May 17, 2021)—Richmond City, VA (N=418)

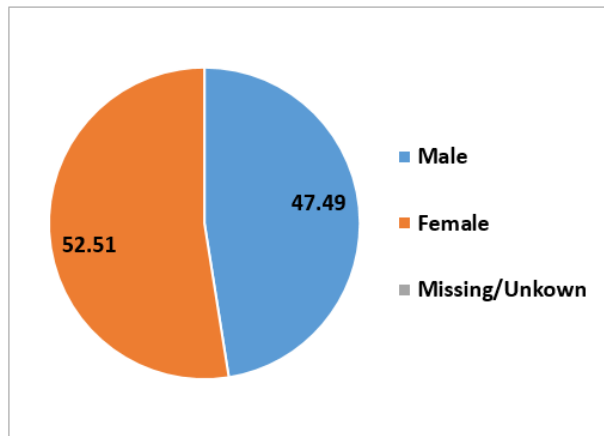


Cumulative COVID-19 case distribution by Sex as of  
May 17, 2021 —Richmond City, VA (n= 16999)

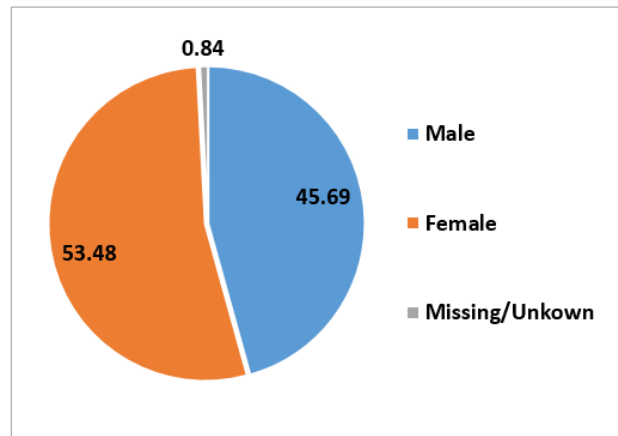


- In Richmond, females comprise a higher proportion of cases relative to males, both in the last 4 weeks (57.2% vs 42.8%) and cumulatively (52.3% vs 46.8%).

COVID-19 case distribution by Sex in the last 4 weeks  
(Apr 19 – May 17, 2021)— Henrico County, VA (N=718)



COVID-19 cases by Sex as of March 21, 2021  
—Henrico County, VA (n=25325)

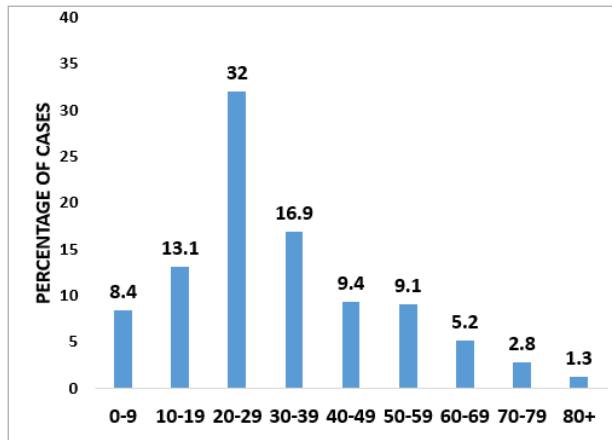


- In Henrico, females comprise a higher proportion of cases relative to males both in the last 4 weeks (53.1% vs 46.9%) as well as cumulatively (53.5% vs 45.7%).



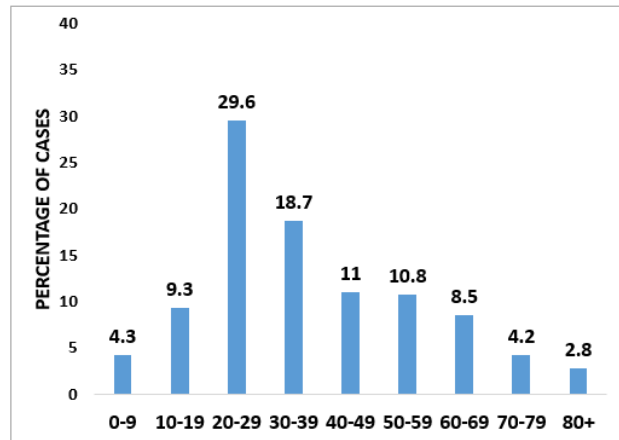
### 3.4 CASES BY AGE GROUP BY COUNTY

**COVID-19 case distribution by Age in the last 4 weeks  
(Apr 19 – May 17, 2021)—Richmond City, VA (N=418)**



Age is missing for .72% (n=13) cases

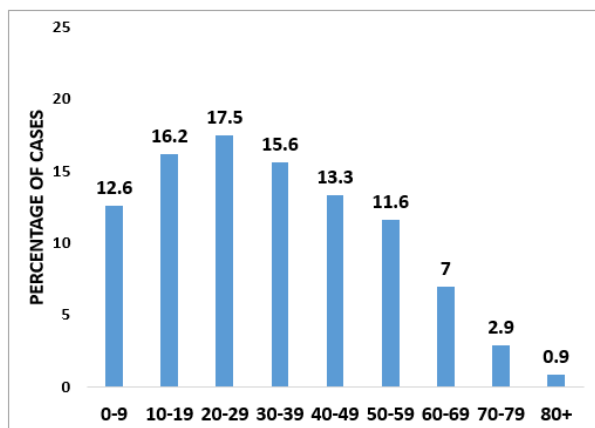
**Cumulative COVID-19 case distribution by Age as of  
May 17, 2021 —Richmond City, VA (n= 16999)**



Age is missing for .85% (n=145) cases

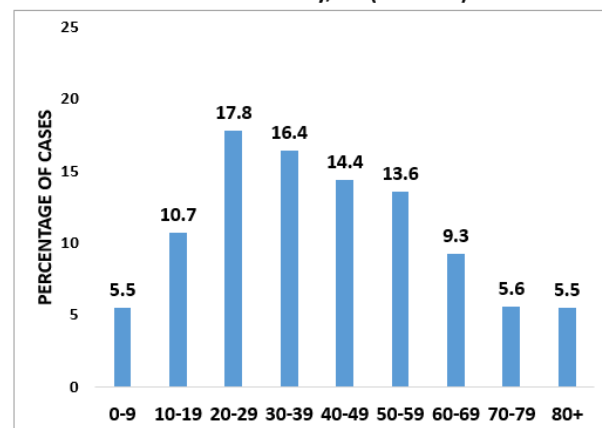
- In Richmond City, individuals aged 20-29 still comprise the highest number of cases in the last four weeks (32%) , followed by individuals aged 30-39 years (16.9%). Cumulatively, 20-29 year olds comprise a noticeable majority of cases when compared to other age groups (29.6%).

**COVID-19 case distribution by Age in the last 4 weeks  
(Apr 19 – May 17, 2021)— Henrico County, VA (N=718)**



Age is missing for 2.09% (n=15) cases

**COVID-19 cases by Age as of May 17, 2021  
—Henrico County, VA (n=25325)**



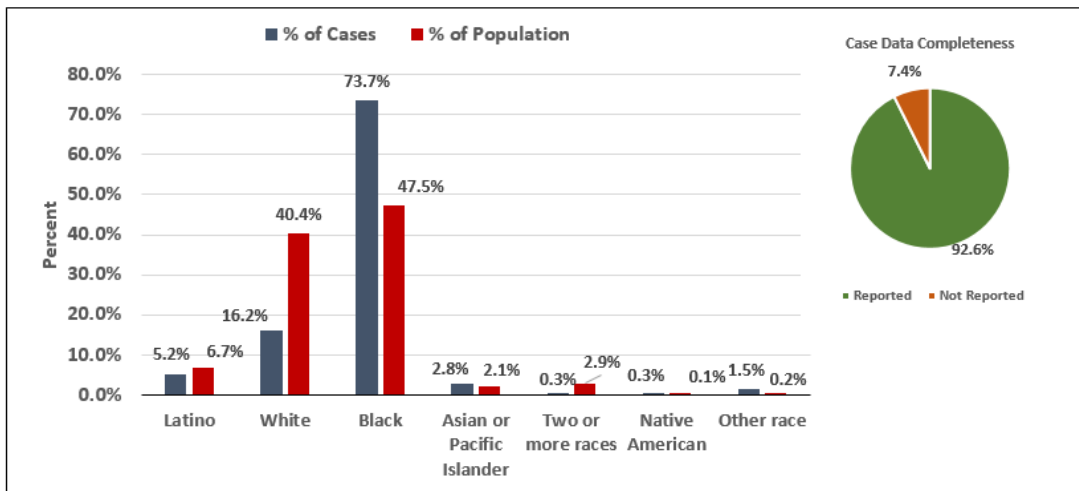
Age is missing for 1.09% (n=276) cases

- In Henrico, individuals aged 20-29 comprise the highest percentage of cases (17.5%) followed by individuals aged 30-39 (15.6%), over the last four weeks. Cumulatively, individuals aged 20-29 comprise the highest percentage of cases (17.8%) and individuals aged 30-39 comprise the second highest percentage of cases (16.4%). Cases by age group in Henrico County show a much more uniform distribution than in Richmond City.

### 3.5 CASES AND POPULATION PROPORTIONS BY RACE AND ETHNICITY BY COUNTY

Population estimates for the Race and Ethnicity subgroup analyses are from the [2018 ACS 5-year estimates](#).

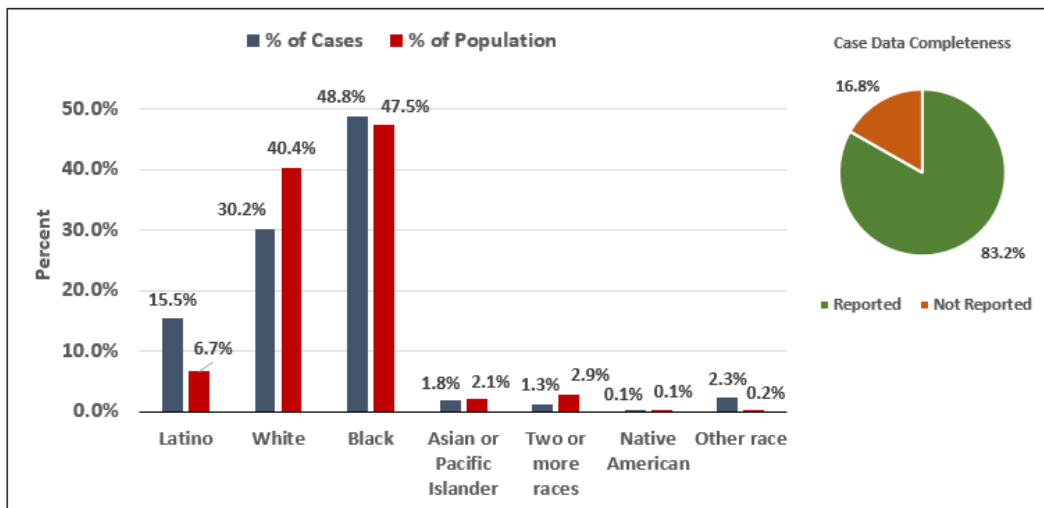
**COVID-19 case distribution by Race and Ethnicity in the last 4 weeks  
(Apr 19 – May 17, 2021)—Richmond City, VA (N=418)**



\*For race/ethnicity identification among cases, "Not Reported" comprises 7.4% (n=31).

\*Missing and Unknown Ethnicities were assumed to be of Non-Hispanic ethnicity

**Cumulative COVID-19 case distribution by Race and Ethnicity  
as of May 17, 2021 —Richmond City, VA (n= 16999)**

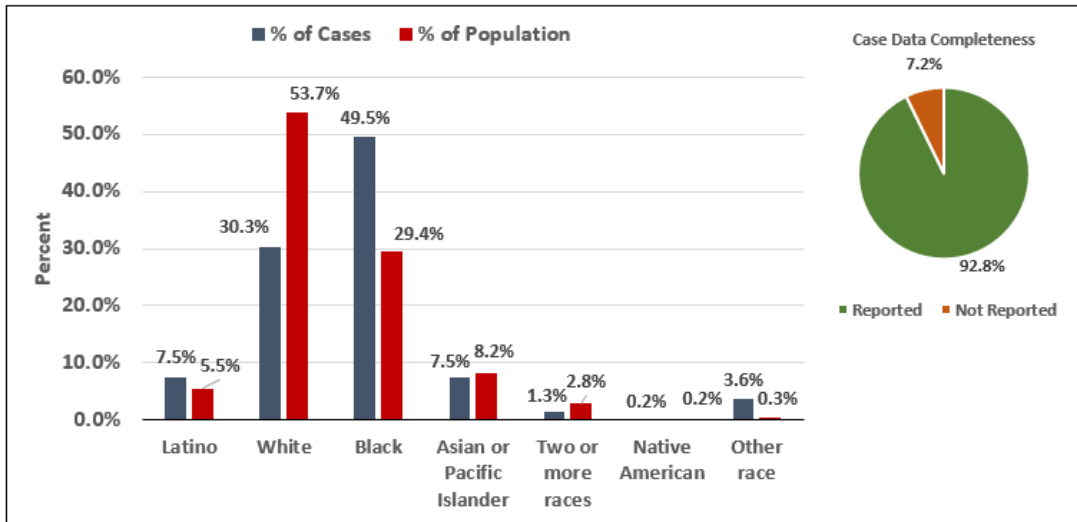


\*For race/ethnicity identification among cases, "Not Reported" comprises 16.78% (n=2852).

\*Missing and Unknown Ethnicities were assumed to be of Non-Hispanic ethnicity

- In Richmond, the case burden for Black individuals over the last 4 weeks (73.7%) is disproportionately high relative to their population percentage (47.5%), while the case burden for White individuals is disproportionately low, both in the last four weeks (16.2%) and cumulatively (30.2%) relative to their population percentage (40.4%). While the cumulative case burden for Latino individuals (15.5%) is disproportionately high compared to their population percentage (6.7%), the case burden over the last four weeks for Latino individuals (5.2%) has been lower than the population percentage. Cumulatively, individuals identifying as belonging to 'Other race' groups comprise 2.3% of the case burden.

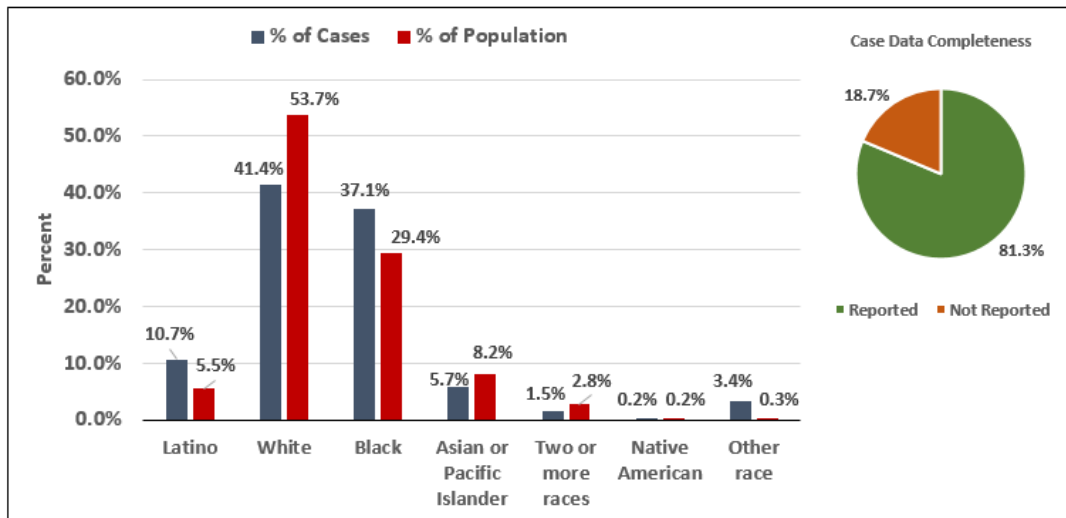
**COVID-19 case distribution by Race and Ethnicity in the last 4 weeks  
(Apr 19 – May 17, 2021)— Henrico County, VA (N=718)**



\*For race/ethnicity identification among cases, "Not Reported" comprises 7.24% (n=52).

\*Missing and Unknown Ethnicities were assumed to be of Non-Hispanic ethnicity

**Cumulative COVID-19 case distribution by Race and Ethnicity as of May 17, 2021  
—Henrico County, VA (n=25325)**



\*For race/ethnicity identification among cases, "Not Reported" comprises 18.68% (n=4731).

\*Missing and Unknown Ethnicities were assumed to be of Non-Hispanic ethnicity

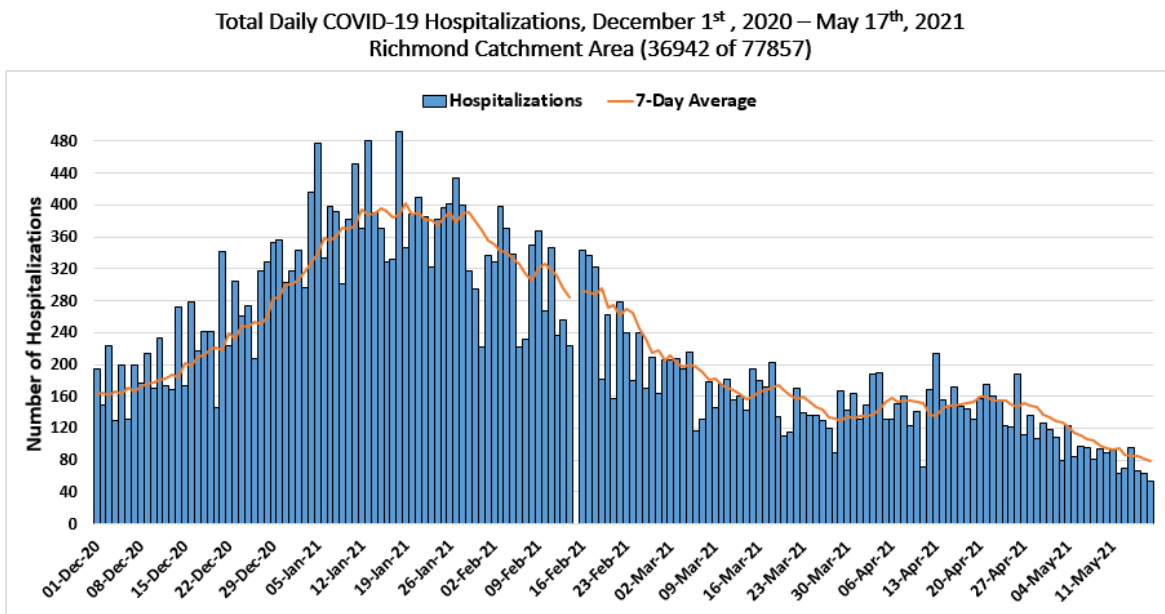
- In Henrico, the case burden for Black individuals over the last 4 weeks (49.5%) and cumulatively (37.1%) is disproportionately high relative to their population percentage (29.4%). The case burden for White individuals has been disproportionately low over the last four weeks (30.1%) and cumulatively (41.4%) relative to their population percentage (53.7%). Both the cumulative case burden for Latino individuals (10.7%) and the case burden over the past four weeks (7.5%) have been disproportionately high as compared to their population percentage (5.5%). Over the past four weeks, individuals belonging to 'Other race' groups have comprised (3.6)% of cases, a burden which is disproportionately high as compared to their cumulative case burden (3.4%), along with their population percentage (0.3%).

## 4.0 COVID-19 HOSPITALIZATIONS

### 4.1 SUMMARY OF HOSPITALIZATIONS

Based on VEDSS data, hospitalizations among Richmond and Henrico residents are decreasing, with few recent admissions (see [VDH Dashboard](#) for additional trend data). Looking more broadly, hospitalizations at health systems within the Richmond catchment area are also decreasing. ICU hospitalizations and the use of ventilators at these hospitals have plateaued in the last week. All 11 hospitals in the Richmond catchment area are still operating at a normal clinical status. *Hospitalizations by subgroup (sex, age, and race) are reported on a monthly basis.*

### 4.2 HOSPITALIZATIONS (CONFIRMED AND PENDING) BY DAY IN THE RICHMOND CATCHMENT AREA AS OF MAY 17, 2021



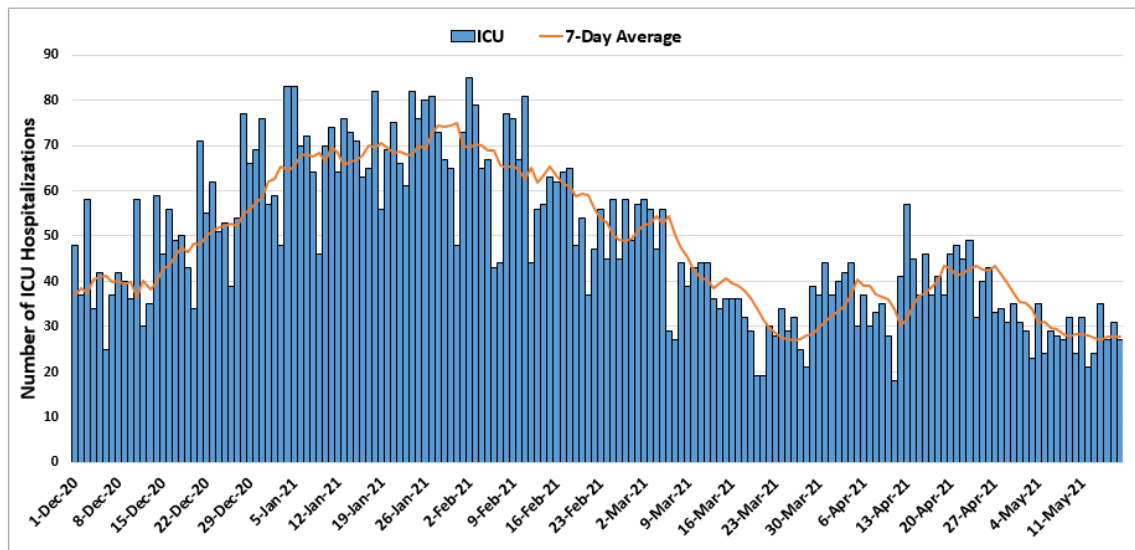
\* Data points from March until November 30<sup>th</sup> are excluded to allow for clarity in trends/patterns

\* Data points from February 15<sup>th</sup>, 2021 were omitted due to issues with data quality

- Data from the 11 hospitals included in this analysis has shown a downward trend in hospitalizations in late April through mid May, following some fluctuations in March and April. These developments follow a significant decrease in hospitalizations from January and February.
- *Note: Data from February 15<sup>th</sup>, 2021 showed an erroneously high value and was subsequently omitted from the analysis. Steps are being taken to restore the quality of this data.*
- *Note: VA Medical Center has not updated hospitalization data in recent weeks.*

#### 4.3 ICU HOSPITALIZATIONS (CONFIRMED AND PENDING) BY DAY IN THE RICHMOND CATCHMENT AREA AS OF MAY 17, 2021

Total Daily COVID-19 ICU Hospitalizations, December 1<sup>st</sup>, 2020 – May 17<sup>th</sup>, 2021  
Richmond Catchment Area (8086 of 17830)

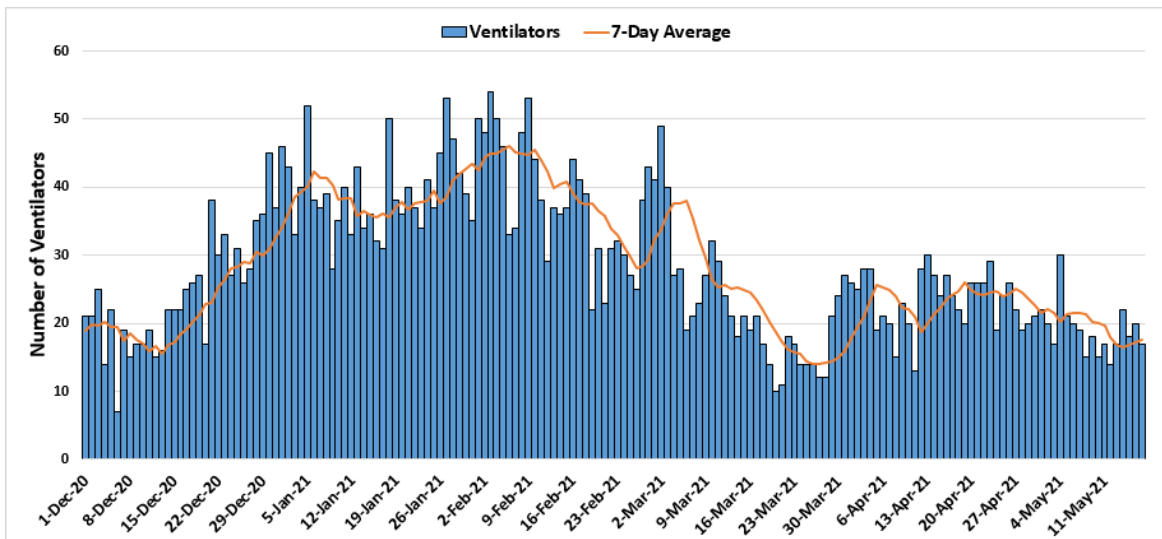


\* Data points from March until November 30<sup>th</sup> are excluded to allow for clarity in trends/patterns

- Following a recent increase from late March through the middle of April, ICU hospitalizations showed a moderate decrease in late April and early May, and seem to be plateauing. This has occurred despite the lack of a commensurate increase in hospitalizations.
- *Note: VA Medical Center has not updated ICU hospitalization data in recent weeks.*

#### 4.4 VENTILATOR UTILIZATIONS (PATIENTS ON VENTILATORS) BY DAY IN THE RICHMOND CATCHMENT AREA AS OF MAY 17, 2021

Total Daily COVID-19 Ventilator Utilizations, December 1<sup>st</sup>, 2020 – May 17<sup>th</sup>, 2021  
Richmond Catchment Area (4737 of 9880)



\* Data points from March until November 30<sup>th</sup> are excluded to allow for clarity in trends/patterns

- After ventilator utilization increased over the month of April from low levels in March, utilization has plateaued with some fluctuations and a recent mild decrease.
- *Note: VA Medical Center has not updated ventilator utilization data in recent weeks.*

## 5.0 COVID-19 FATALITIES

### 5.1 SUMMARY OF FATALITIES

Current trends in COVID-19 deaths are decreasing overall, with a 7-day average of 1 new death in Richmond and Henrico according to the [VHD Dashboard](#). Please note that trends in death data are frequently impacted by a lag in reporting. *Deaths by subgroup (sex, age, and race) are reported on a monthly basis.*

## 6.0 VACCINATION

### 6.1 VACCINE SUMMARY

Richmond and Henrico Health Districts are in Phase 2 of vaccination. Anyone 12 or older is eligible to receive the vaccine, with individuals 12 to 15 years old newly eligible for the Pfizer vaccine, though vaccination data for this new age group is not yet available due to a standard lag in reporting. As of May 15, 49.2% of the region's population has received at least one dose of the vaccine and 39.5% of the region's population has been fully vaccinated. Approximately 46.6% of Richmond and Henrico's combined population has received at least one dose and 36.9% of the two districts combined population has been fully vaccinated.

The majority of vaccine recipients in both districts have been female. The highest counts of vaccine recipients have been among 30-39 year olds in Richmond and 60-69 and 50-59 year olds in Henrico. Available data indicate that eligible White individuals have received the majority of the vaccine in both districts, but a large percentage of the recipients' race/ethnicity is still unreported.

### 6.2 PERCENTAGE OF VACCINATION GOALS REACHED BY POPULATION

		POPULATION	POPULATION GOAL (75%)	PEOPLE WITH AT LEAST ONE DOSE	PEOPLE FULLY VACCINATED
Richmond	12-17*				
	18+	186,666	140,000	92,253(49.4%)	68,025(36.4%)
	65+	29,085	21,814	22,393 (76.9%)	18,568 (63.8%)
Henrico	12-17*				
	18+	252,502	189,377	162,925(64.5%)	118,495(46.9%)
	65+	49,085	36,814	44,267 (90.2%)	36,328 (74.0%)

Population totals are based on 2019 ACS-5 year estimates from the US Census.

\*The US Census ACS Estimates do not include population estimates for the 12-17 age group. We are currently identifying a reliable source for the estimates.

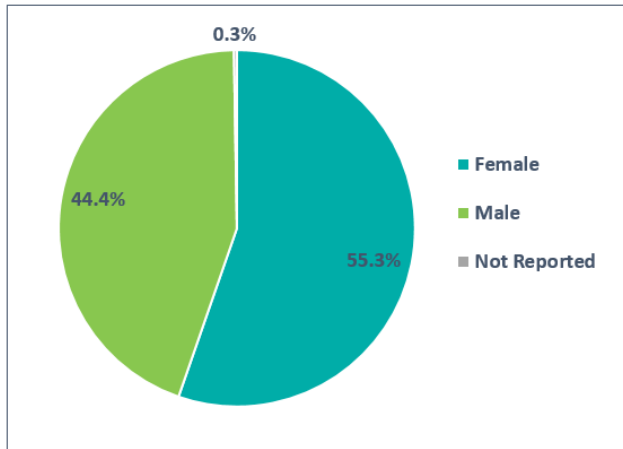
6.3 VACCINATIONS BY LOCALITY AS OF MAY 15, 2021 - SOURCE: [VDH.VIRGINIA.GOV](https://www.vdh.virginia.gov)

HEALTH DISTRICT	LOCALITY	POPULATION	FIRST DOSES ADMINISTERED	SECOND DOSES ADMINISTERED
Chesterfield	Chesterfield	352,802	165,707	132,587
	Colonial Heights	17,428	7,059	5,426
	Powhatan	28,815	12,585	10,284
Chickahominy	Charles City	6,963	3,284	2,711
	Goochland	23,753	13,566	11,612
	Hanover	107,766	55,114	46,471
	New Kent	23,091	10,123	8,763
Henrico	Henrico	330,818	166,723	131,394
Richmond	Richmond City	226,622	93,163	74,440
<b>Total</b>		<b>1,118,058</b>	<b>527,324</b>	<b>423,688</b>

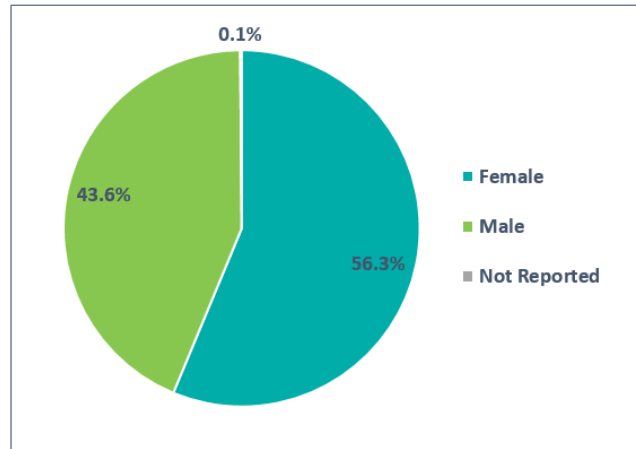
We have set a goal of vaccinating 75% of the population to reach herd immunity. First and second doses of the Pfizer vaccine must be administered at least 21 days apart. First and second doses of the Moderna vaccine must be administered at least 28 days apart. People who received the Johnson & Johnson vaccine, which is a single dose, are included in the count of first doses administered.

## 6.3 VACCINE DISTRIBUTION BY DEMOGRAPHIC SUBGROUP

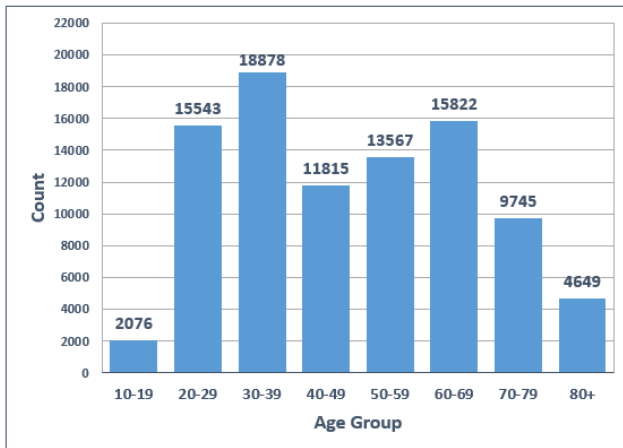
**Total Vaccine Recipients by Sex in Richmond**  
-- May 14, 2021 (N = 92,213)



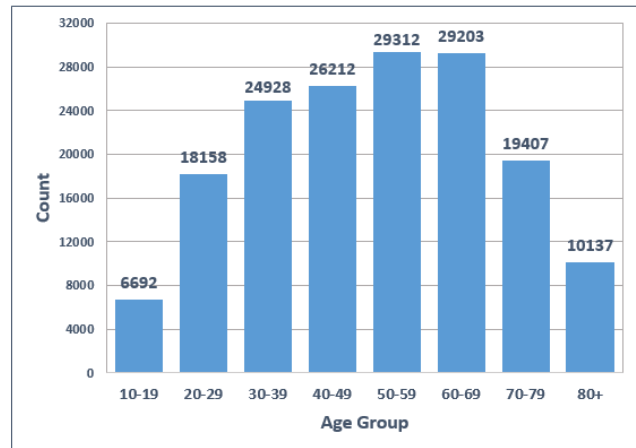
**Total Vaccine Recipients by Sex in Henrico**  
-- May 14, 2021 (N = 164,604)



**Total Vaccine Recipients by Age Group in Richmond**  
-- May 14, 2021 (N = 92,095)



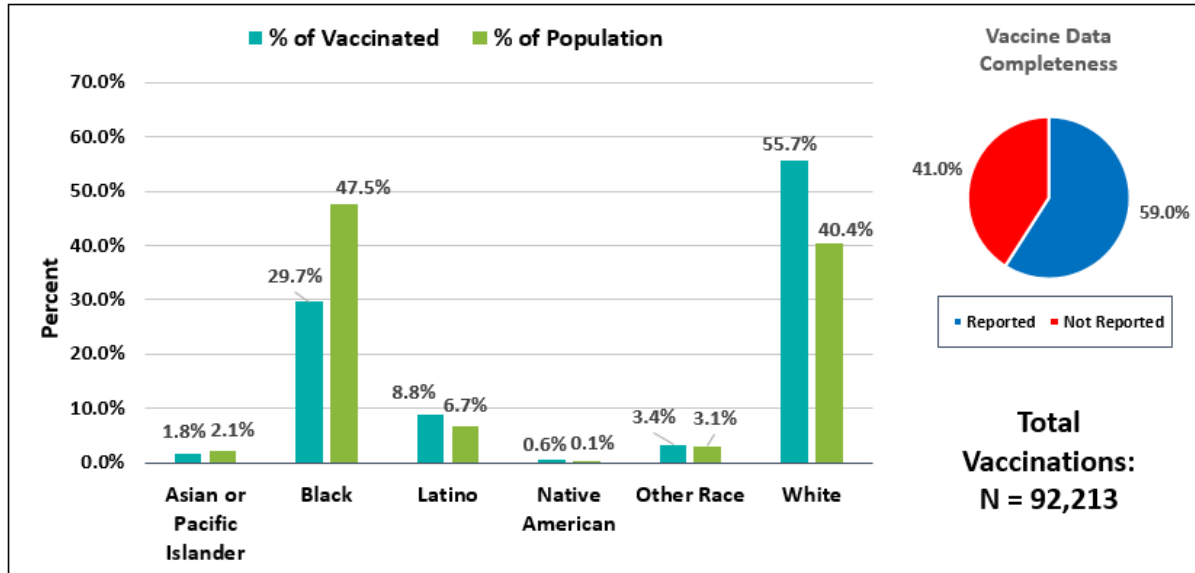
**Total Vaccine Recipients by Age Group in Henrico**  
-- May 14, 2021 (N = 164,049)





The following charts compare the percentage breakdown of racial or ethnic identification of vaccinated individuals to the expected percentage breakdown of the racial or ethnic identification of the population. A notable discrepancy can be seen when looking at Black individuals, who comprise 47.5% of the Richmond population and 29.4% of the Henrico population yet only 29.7% of vaccine recipients in Richmond and 20.2% of vaccine recipients in Henrico.

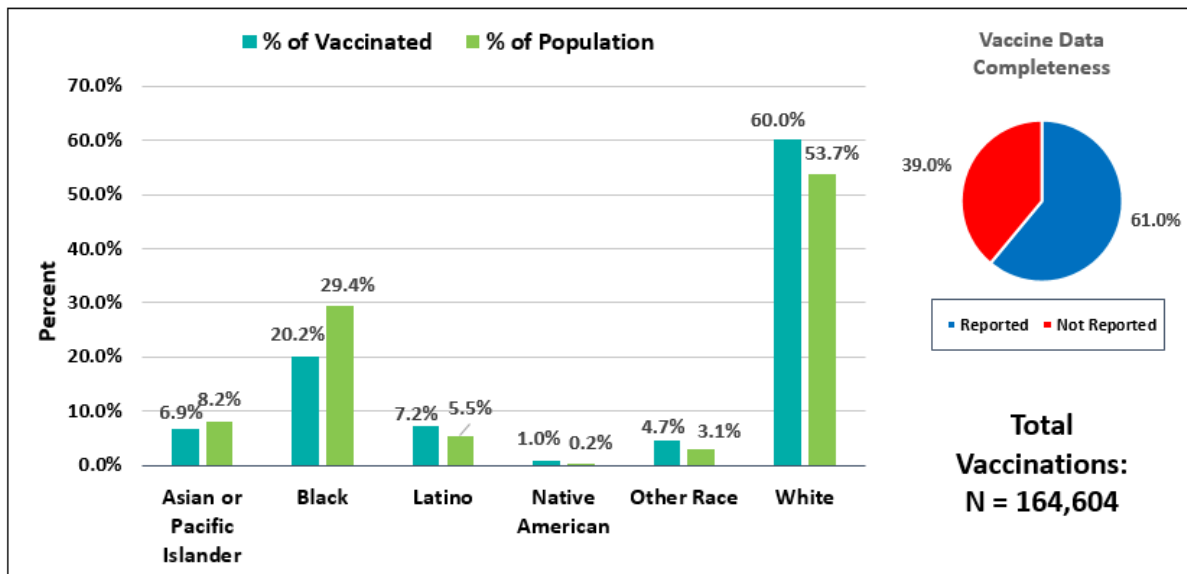
### Vaccine Recipients vs. Population by Race/Ethnicity Percentages in Richmond – Dec 15, 2020 to May 14, 2021



\*For race/ethnicity of vaccine recipients, "Not Reported" comprises 41.0% (n=37,772).

\*Missing and Unknown Ethnicities were assumed to be of Non-Hispanic ethnicity.

### Vaccine Recipients vs. Population by Race/Ethnicity Percentages in Henrico – Dec 15, 2020 to May 14, 2021

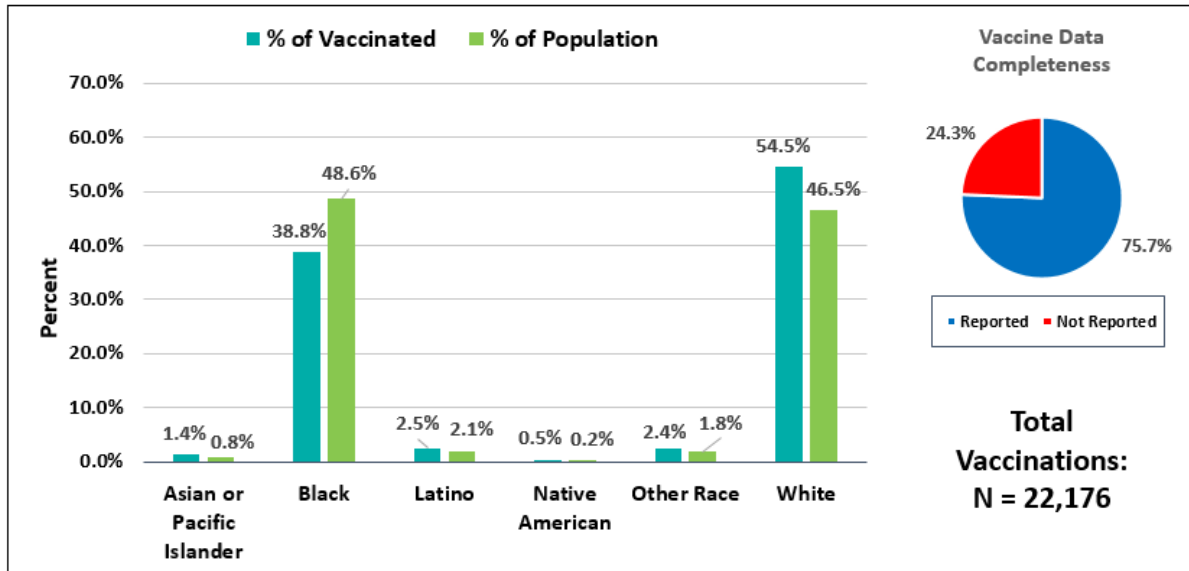


\*For race/ethnicity of vaccine recipients, "Not Reported" comprises 39.0% (n=64,149).

\*Missing and Unknown Ethnicities were assumed to be of Non-Hispanic ethnicity.

The figures below compare the percentage breakdown by race and ethnicity specifically for individuals 65 and over. In Richmond City, Black individuals comprise 48.6% of the population of those aged 65 years and older, yet make up only 38.8% of vaccine recipients. This discrepancy can also be noted in Henrico, where Black individuals make up 25.6% of the population, yet thus far have only comprised 19.8% of vaccine recipients.

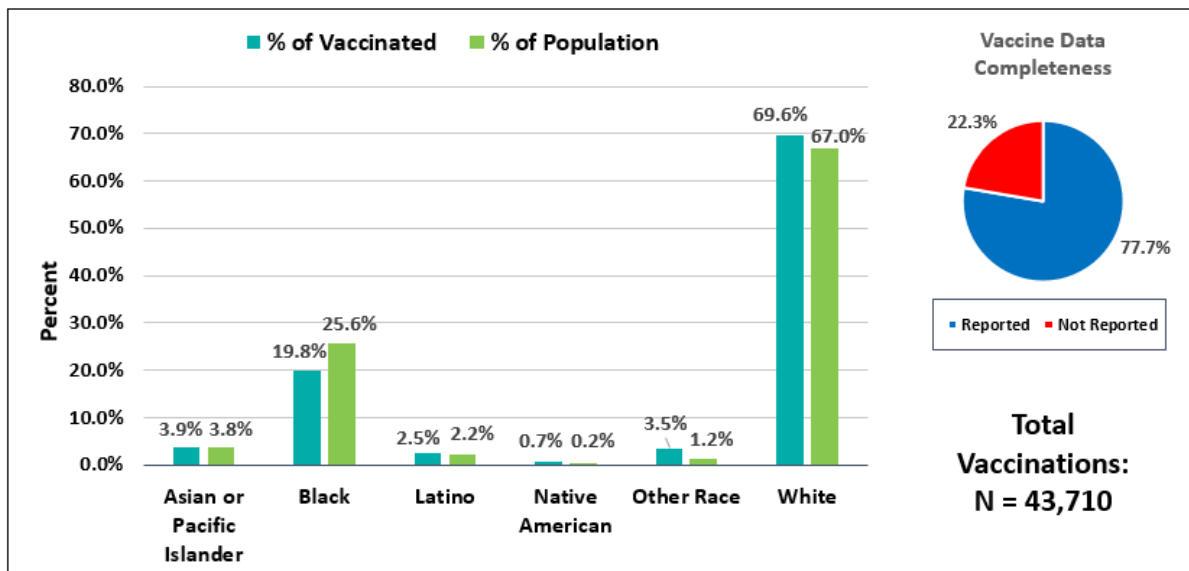
### Vaccine Recipients vs. Population 65 and Over by Race/Ethnicity Percentages in Richmond – Dec 15, 2020 to May 14, 2021



\*For race/ethnicity of vaccine recipients, "Not Reported" comprises 24.3% (n=6,002).

\*Missing and Unknown Ethnicities were assumed to be of Non-Hispanic ethnicity.

### Vaccine Recipients vs. Population 65 and Over by Race/Ethnicity Percentages in Henrico – Dec 15, 2020 to May 14, 2021



\*For race/ethnicity of vaccine recipients, "Not Reported" comprises 22.3% (n=10,825).

\*Missing and Unknown Ethnicities were assumed to be of Non-Hispanic ethnicity.

## 7.0 APPENDIX

### 7.1 CENSUS POPULATION ESTIMATES BY AGE AND RACE--RICHMOND CITY AND HENRICO COUNTY

Richmond City Population Estimates by Age and Race, as of July 1, 2018 (N=228,783)					Henrico County Population Estimates by Age and Race, as of July 1, 2018 (N=329,261)				
Age group (Years)	LATINO	NH WHITE	NH BLACK	NH OTHER	Age group (Years)	LATINO	NH WHITE	NH BLACK	NH OTHER
0-9	3807	6375	13310	1232	0-9	3764	17467	11946	6531
10-19	2282	6587	13047	1554	10-19	3464	18739	13872	5470
20-29	3417	21968	18657	3146	20-29	2870	19249	15019	5142
30-39	2817	19613	14235	1897	30-39	3360	22298	13542	7601
40-49	1901	10191	10525	831	40-49	2608	22194	12532	5766
50-59	1129	10805	14747	690	50-59	1696	25701	13509	3338
60-69	525	10589	13292	574	60-69	819	23639	10596	2368
70-79	218	5457	5866	271	70-79	391	14553	5349	1147
80+	79	3599	3369	181	80+	174	9618	2487	442