

WEEKLY COVID-19 REPORT FOR EXTERNAL USE

MON MAY 17 - MON MAY 24, 2021

CONTENTS

KEY TAKEAWAYS	2
1.0 COVID-19 SNAP SHOT	3
1.1 CONFIRMED CASES, HOSPITALIZATIONS, FATALITIES, AND PROBABLE CASES BY COUNTY	3
1.2 CURRENT COVID-19 HOSPITALIZATIONS IN THE RICHMOND CATCHMENT AREA ON MAY 24, 2021	4
2.0 COVID-19 TESTING ENCOUNTERS AND POSITIVITY	4
2.1 TESTING SUMMARY	4
3.0 COVID-19 CASES	5
3.1 SUMMARY OF CASES	5
3.2 CASE REPORTS TRENDS BY DATE (SOURCE-VDH WEBSITE)	5
3.3 CASES BY SEX BY COUNTY	7
3.4 CASES BY AGE GROUP BY COUNTY	8
3.5 CASES AND POPULATION PROPORTIONS BY RACE AND ETHNICITY BY COUNTY	9
4.0 COVID-19 HOSPITALIZATIONS	11
4.1 SUMMARY OF HOSPITALIZATIONS	11
4.2 HOSPITALIZATIONS (CONFIRMED AND PENDING) BY DAY IN THE RICHMOND CATCHMENT AREA AS OF MAY 24, 2021	11
4.3 ICU HOSPITALIZATIONS (CONFIRMED AND PENDING) BY DAY IN THE RICHMOND CATCHMENT AREA AS OF MAY 24, 2021	12
4.4 VENTILATOR UTILIZATIONS (PATIENTS ON VENTILATORS) BY DAY IN THE RICHMOND CATCHMENT AREA AS OF MAY 24, 2021	12
5.0 COVID-19 FATALITIES	13
5.1 SUMMARY OF FATALITIES	13
6.0 VACCINATION	13
6.1 VACCINE SUMMARY	13
6.2 VACCINATIONS BY LOCALITY AS OF MAY 24, 2021 - SOURCE: VDH.VIRGINIA.GOV	14
6.3 VACCINE DISTRIBUTION BY DEMOGRAPHIC SUBGROUP	15

KEY TAKEAWAYS

- According to the [VDH Pandemic Metrics Dashboard](#), in Richmond, there were **17.9 new cases per 100,000 in the last week**. Cases have been decreasing for the last 47 days. Percent **positivity** for the locality is 2.1% and is also decreasing. In Henrico, there were **40.1 new cases per 100,000 in the last week**. Cases have been decreasing in Henrico for the last 50 days. Percent positivity for the locality is 2.0% and also decreasing.
- **Cases** in both districts continue to decline, with a 7-day average of 2.6 new cases per day, per 100,000 population in Richmond and 5.7 new cases per day, per 100,000 population in Henrico.
 - Due to recent changes in VEDSS that have impacted the date range of data available for analysis, we have had to limit the demographic analysis in this report to data from the last 4 weeks. Within this range, **females** comprise a higher proportion of cases and **20-29 year olds** continue to lead case counts in both districts. Regarding race and ethnicity, in Richmond, the highest proportion of cases is still among **Black individuals**. In Henrico, the proportion of cases is highest among **White individuals**.
- Based on data from the [VDH Dashboard](#), **hospitalizations** are decreasing among Richmond residents and fluctuating among Henrico residents, though with few recent admissions in both districts. Looking more broadly at health systems within the Richmond catchment area, hospitalizations, ICU hospitalizations, and ventilator utilizations are also decreasing. All 11 hospitals in the Richmond catchment area are still operating at a normal clinical status. *Hospitalizations by subgroup (sex, age, and race) are reported on a monthly basis.*
- Based on data from the [VDH Dashboard](#), **COVID-19 deaths** are decreasing overall, with a 7-day average of new deaths per day well below 1 in both districts. While there were zero deaths reported from COVID-19 over the past week in Richmond City, there were seven reported in Henrico County. Please note that trends in death data are frequently impacted by a lag in reporting. *Deaths by subgroup (sex, age, and race) are reported on a monthly basis.*
- Richmond and Henrico Health Districts are in **Phase 2 of vaccination**. Anyone 12 or older is eligible to receive the vaccine, with individuals 12 to 15 years old now eligible for the Pfizer vaccine. As of May 24, **49.9% of the region's population** has received at least one dose of the vaccine and 40.6% of the region's population has been fully vaccinated. Approximately 48.4% of Richmond and Henrico's combined population has received at least one dose and 39.0% of the two districts combined population has been fully vaccinated.
 - The majority of vaccine recipients in both districts have been **female**. The highest counts of vaccine recipients have been among **30-39 year olds** in Richmond and **60-69 and 50-59 year olds** in Henrico. Available data indicate that eligible **White individuals** have received the majority of the vaccine in both districts.

1.0 COVID-19 SNAP SHOT

1.1 CONFIRMED CASES, HOSPITALIZATIONS, FATALITIES, AND PROBABLE CASES BY COUNTY

CASE STATUS	RICHMOND CITY	HENRICO COUNTY	VIRGINIA
New cases this week (May 23)	123	267	6119
All cases	17049	25480	673105
Confirmed cases	14020	18783	523822
Hospitalizations	783	1025	28004
Deaths	231	549	9383
Probable cases	3029	6697	149283
Hospitalizations	19	40	1501
Deaths	34	70	1733
Case rate per 100,000	7398.6	7702.1	7885.9

Weekly cases added are estimated as the difference between the cases recorded from the current and prior week

*Case Rate per 100,000=(confirmed+probable)/population count *100,000.*

Population estimates for the case rate are from 2019 data compiled by the National Center for Health Statistics (NCHS).

1.2 CURRENT COVID-19 HOSPITALIZATIONS IN THE RICHMOND CATCHMENT AREA ON MAY 24, 2021

The data included in this section comes from VHASS and it includes data from the following hospitals: VCU Health System, Retreat Doctors', Bon Secours Community, CWJ Chippenham, CWJ Johnson Willis, VA Medical Center, Bon Secours St. Mary's, Henrico Doctors, and Parham Doctors, Bon Secours St. Francis, and Memorial Regional Medical Center.

	TOTAL IN USE FOR COVID-19	CURRENTLY AVAILABLE
Confirmed Hospitalizations	77	145
Pending Hospitalizations	12	
Confirmed - ICU	34	44
Pending - ICU	*	
Confirmed - Ventilators	17	306
Pending - Ventilators	*	

*Counts <5 have been suppressed

Within these 11 hospitals that comprise the Richmond catchment area, there are currently 145 total available hospital beds, 44 available adult ICU beds, and 306 available ventilators. Based on the VHASS hospital dashboard on May 17, 2021, all 11 hospitals are operating at normal clinical status.*

**A clinical status of “normal” indicates that hospital clinical resources are operating within normal conditions. A clinical status of “full” indicates that hospital clinical resources are exceeded and acceptable care cannot be provided to additional patients. Diversion or Community surge response is required.

2.0 COVID-19 TESTING ENCOUNTERS AND POSITIVITY

2.1 TESTING SUMMARY

Total tests by testing modality and the associated 7-day average in percent positivity are summarized in the table below. Data are from the [VDH public dashboard](#) on May 24, 2021.

	RICHMOND CITY		HENRICO COUNTY	
	Tests	Positivity	Tests	Positivity
PCR*	251,248	2.1%	376,210	2.0%
Antigen	47,136	2.9%	97,419	3.7%
Total (PCR, antigen, and antibody)	303,209	2.7%	482,868	2.9%

*All testing metrics included in previous reports have been based on PCR tests

3.0 COVID-19 CASES

3.1 SUMMARY OF CASES

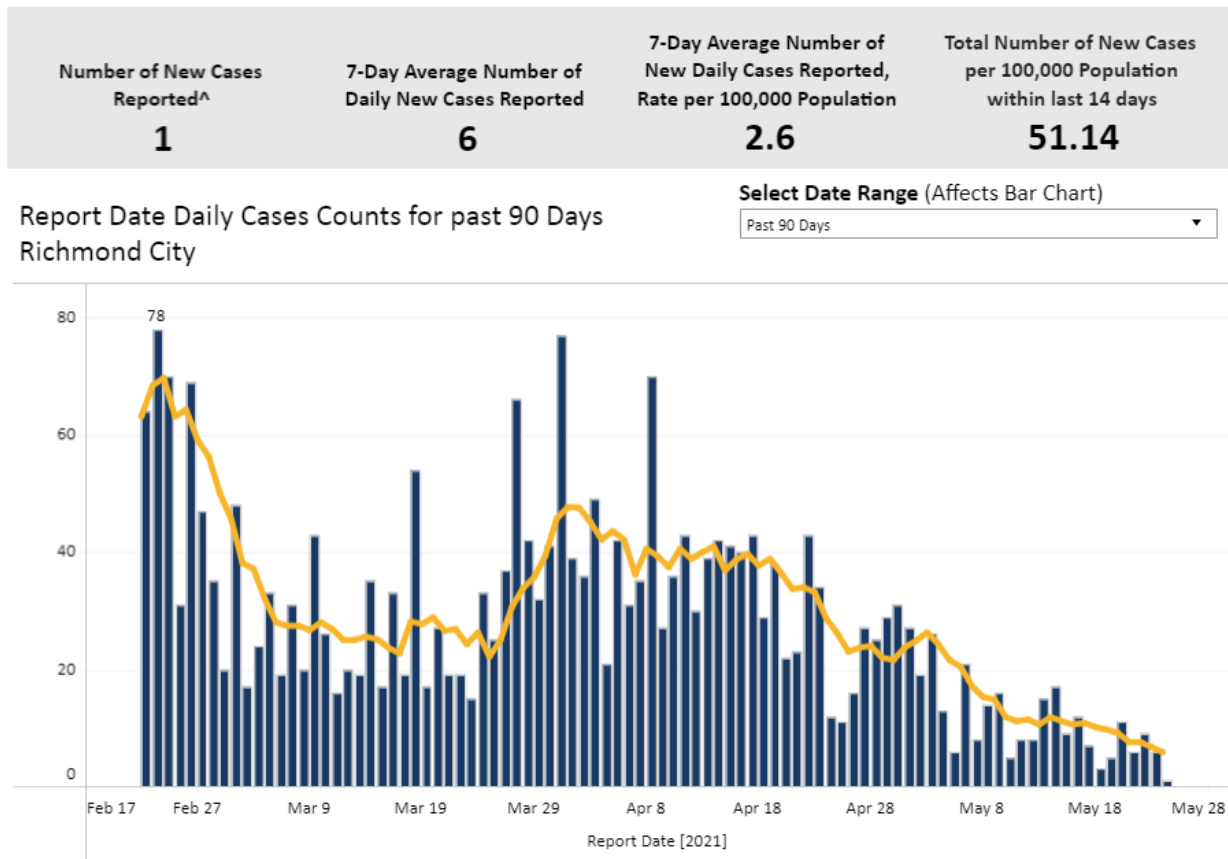
Cases

Cases in both districts continue to decline, with a 7-day average of 2.6 new cases per day, per 100,000 population in Richmond and 5.7 new cases per day, per 100,000 population in Henrico.

Case Demographics

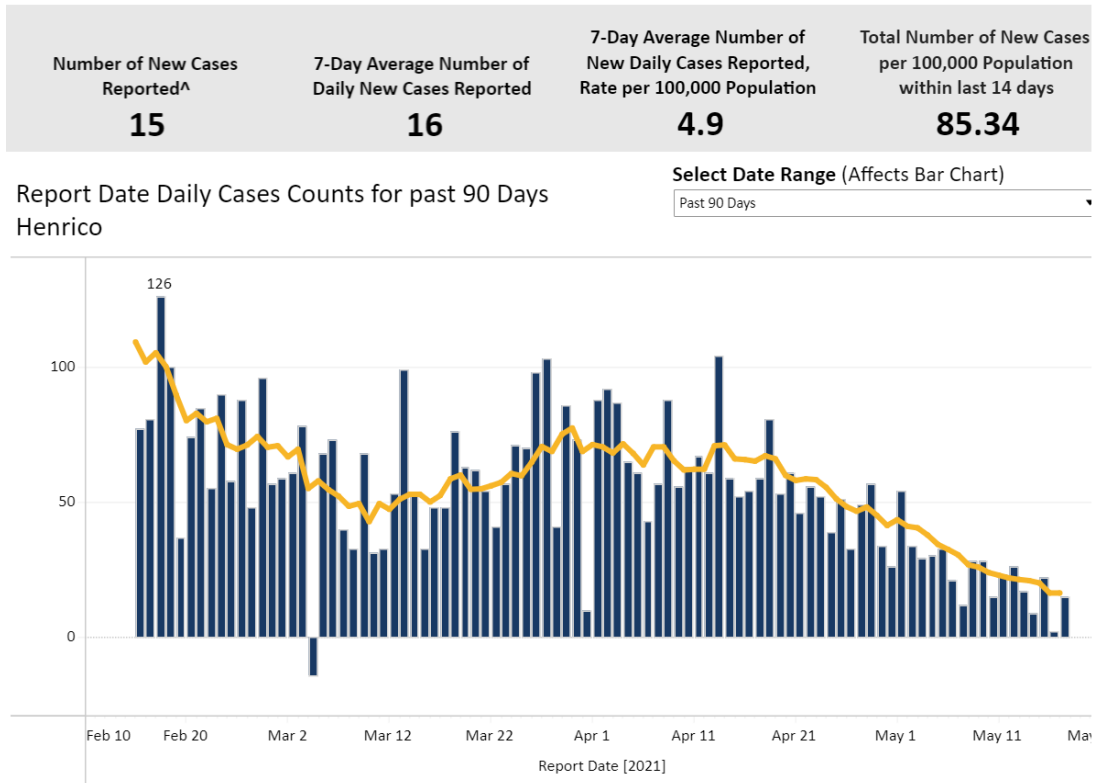
Due to recent changes in VEDSS which have impacted the date range of data available for analysis, we have had to limit the demographic analysis in this report to data from the last 4 weeks. Within this range, females comprise a higher proportion of cases and 20-29 year olds continue to lead case counts in both districts. Regarding race and ethnicity, in Richmond, the highest proportion of cases is still among Black individuals. In Henrico, the proportion of cases is highest among White individuals.

3.2 CASE REPORTS TRENDS BY DATE (SOURCE-VDH WEBSITE)



The report date corresponds to the date the case count was reported publicly. The report date does not have any equivalent variable in VEDSS, and cannot be directly linked to case-specific dates (e.g., event dates or lab report dates). Case counts by report date are estimated by subtracting the cumulative cases on the previous day from that of the current day. The 7-day moving average is a recurrent average of the number of cases for each 7-day data sequence.

- In Richmond, the 7-day average number of daily new cases reported this week shows a continued decrease in overall case counts. Only 1 new case was reported on May 24, 2021. The 7-day average of new daily cases is currently 2.6 per 100,000 population.

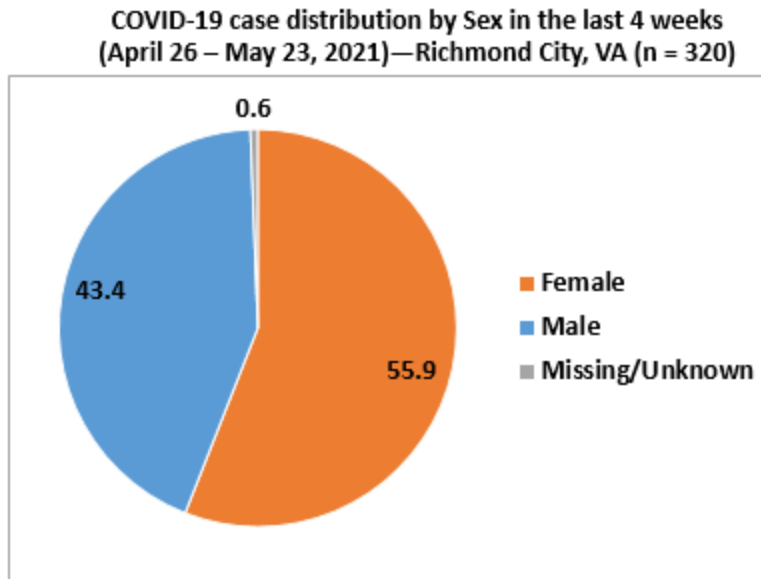


- In Henrico, the number of new cases reported per day is fluctuating, though still at a much lower count than in previous months. A total of 7 new cases were reported on May 24, 2021. The 7-day average number of cases reported daily in Henrico County is 5.7 per 100,000 population.
- The negative case count on March 3 is a result of cases being reassigned to other health districts.

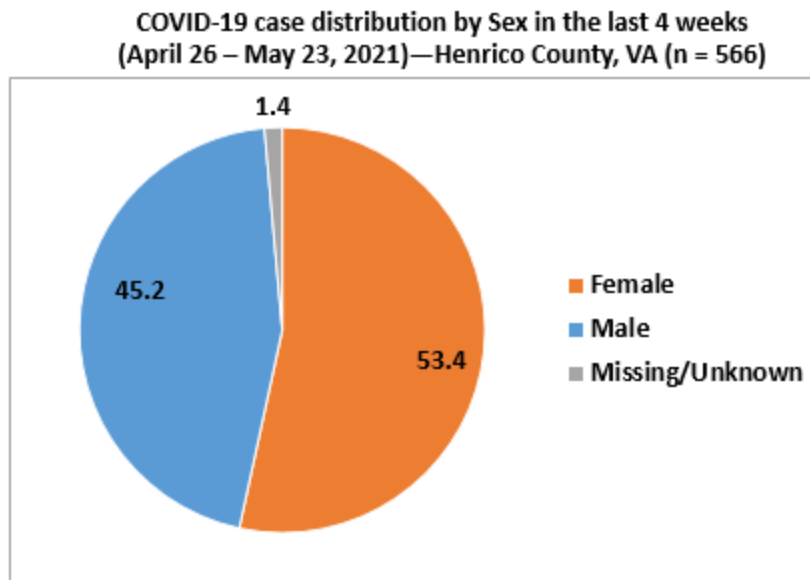
3.3 CASES BY SEX BY COUNTY

All percentages are based on overall case distribution, rather than the proportion of known cases for each measure, and therefore may not correspond directly with VDH percentages.

Recent changes in VEDSS have impacted the date range of data available for analysis. The charts below show data from the last 4 weeks. We hope to be able to show cumulative data in future reports.



- In Richmond, over the last four weeks, females have comprised a majority of cases (55.9%) when compared to males (43.4%). Sex data has been Missing/Unknown for 0.62% of cases over the last four weeks.

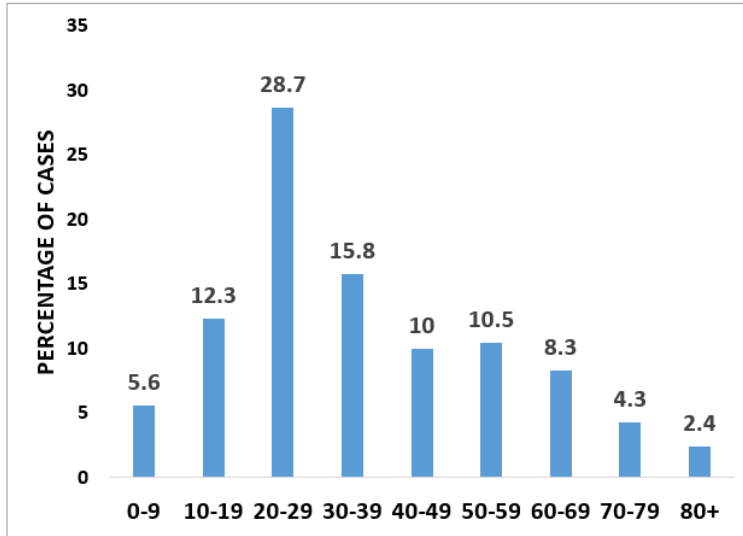


- In Henrico, over the last four weeks, females have comprised 53.4% of cases, whereas males have comprised 45.2% of cases. Sex data for 1.4% of cases over the last four weeks is unknown.

3.4 CASES BY AGE GROUP BY COUNTY

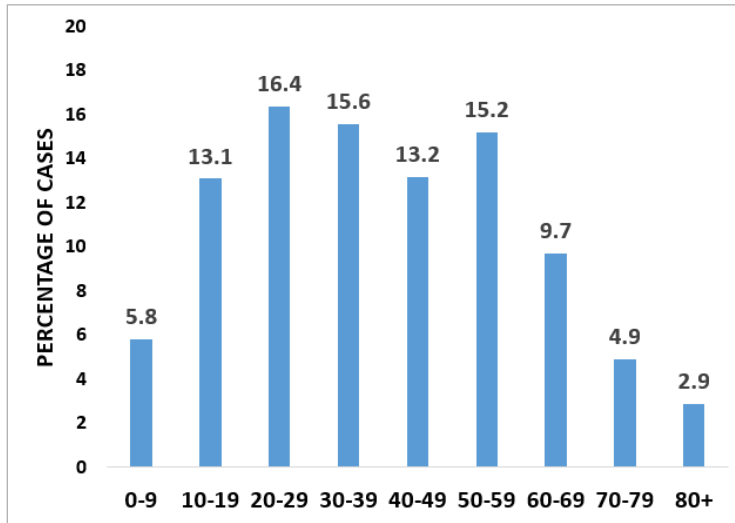
Recent changes in VEDSS have impacted the date range of data available for analysis. The charts below show data from the last 4 weeks. We hope to be able to show cumulative data in future reports.

**COVID-19 case distribution by Age group in last 4 weeks
(April 26 – May 24, 2021) – Richmond City, VA (N=351)**



- In Richmond City, individuals aged 20-29 still comprise the highest number of cases in the last four weeks (28.7%) , followed by individuals aged 30-39 years (15.8%).

**COVID-19 case distribution by Age group in the last 4 weeks
(April 26 – May 24, 2021) – Henrico County, VA (N=566)**



*Age is missing for 0.4% (n=2) of cases

- In Henrico, individuals aged 20-29 comprise the highest percentage of cases (16.4%) followed closely by individuals aged 30-39 (15.6%) and individuals aged 50-59 (15.2%) over the last four weeks. Cases by age group in Henrico County show a much more uniform distribution than in Richmond City.

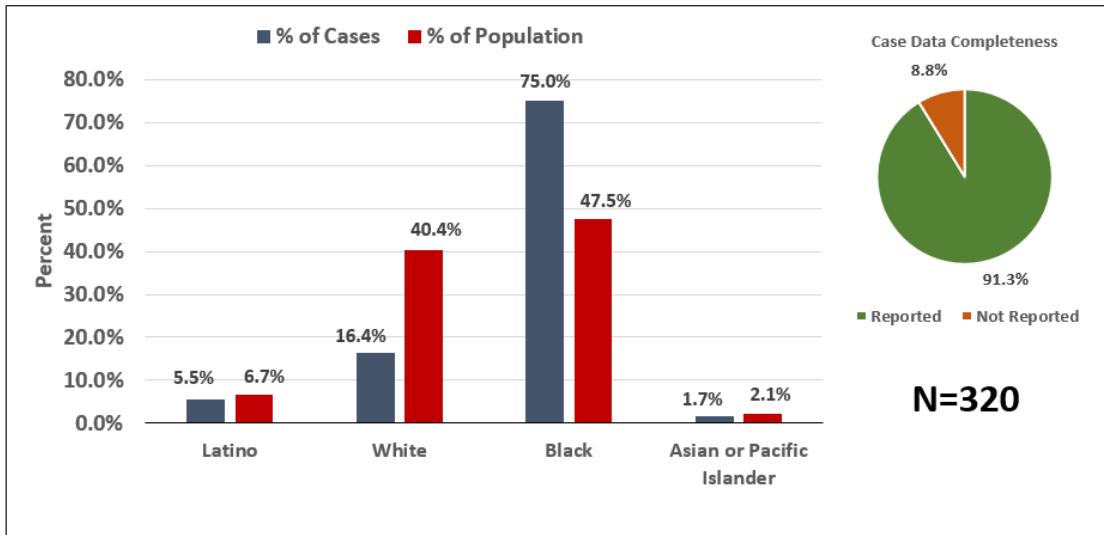
3.5 CASES AND POPULATION PROPORTIONS BY RACE AND ETHNICITY BY COUNTY

Population estimates for the Race and Ethnicity subgroup analyses are from the [2018 ACS 5-year estimates](#).

Population estimates for the Race and Ethnicity subgroup analyses are based on 2019 5-Year estimates from the American Community Survey by the U.S. Census Bureau.

Recent changes in VEDSS have impacted the date range of data available for analysis. The charts below show data from the last 4 weeks. We hope to be able to show cumulative data in future reports.

**COVID-19 case distribution by Race and Ethnicity in the last 4 weeks
(April 26 – May 24, 2021) – Richmond City, VA**



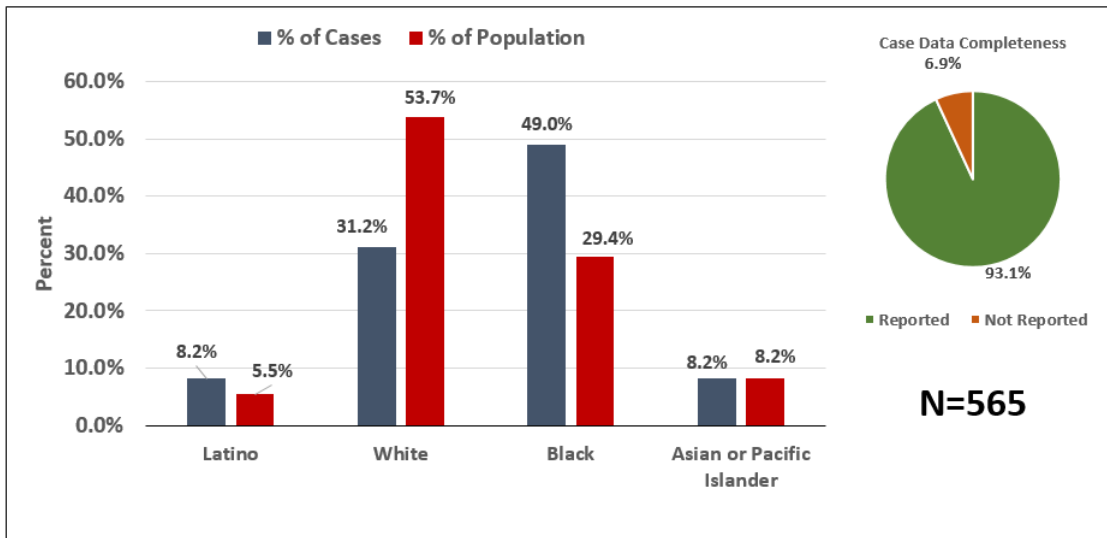
*For race/ethnicity identification among cases, "Not Reported" comprises 8.75% (n=28).

*Missing and Unknown Ethnicities were assumed to be of Non-Hispanic ethnicity

*Cases among individuals identifying as Native American, Other Race, or Two or More Races are suppressed (counts < 5)

- In Richmond, the case burden for Black individuals over the last 4 weeks (75.0%) is disproportionately high relative to their population percentage (47.5%), while the case burden for White individuals is disproportionately low (16.4%) relative to their population percentage (40.4%).

**COVID-19 case distribution by Race and Ethnicity in the last 4 weeks
(April 26 – May 24, 2021) – Henrico County, VA**



*For race/ethnicity identification among cases, "Not Reported" comprises 29.5% (n=778).

*Missing and Unknown Ethnicities were assumed to be of Non-Hispanic ethnicity

*Cases among individuals identifying as Native American, Other Race, and Two or More Races are suppressed (counts < 5)

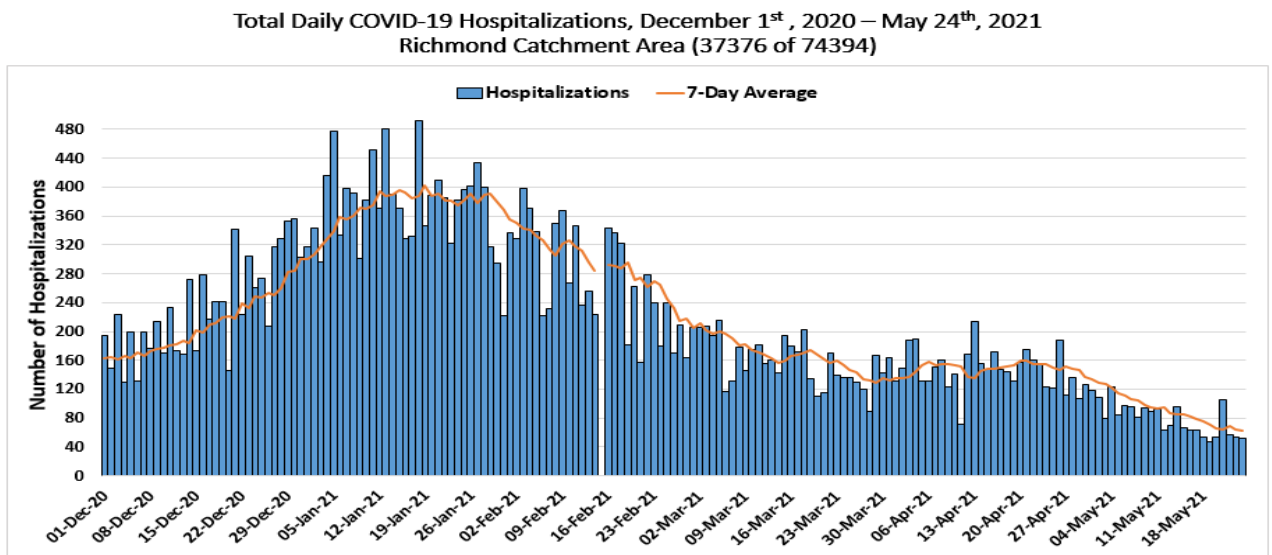
- In Henrico, the case burden for Black individuals over the last 4 weeks (49.0%) is disproportionately high relative to their population percentage (29.4%). The case burden for White individuals has been disproportionately low over the last four weeks (31.2%) relative to their population percentage (53.7%). The case burden over the past four weeks for Latino individuals (8.2%) has been disproportionately high as compared to their population percentage (5.5%).

4.0 COVID-19 HOSPITALIZATIONS

4.1 SUMMARY OF HOSPITALIZATIONS

Based on data from the [VDH Dashboard](#), hospitalizations are decreasing among Richmond residents and fluctuating among Henrico residents, though with few recent admissions in both districts. Looking more broadly at health systems within the Richmond catchment area, hospitalizations, ICU hospitalizations, and ventilator utilizations are also decreasing. All 11 hospitals in the Richmond catchment area are still operating at a normal clinical status. *Hospitalizations by subgroup (sex, age, and race) are reported on a monthly basis.*

4.2 HOSPITALIZATIONS (CONFIRMED AND PENDING) BY DAY IN THE RICHMOND CATCHMENT AREA AS OF MAY 24, 2021



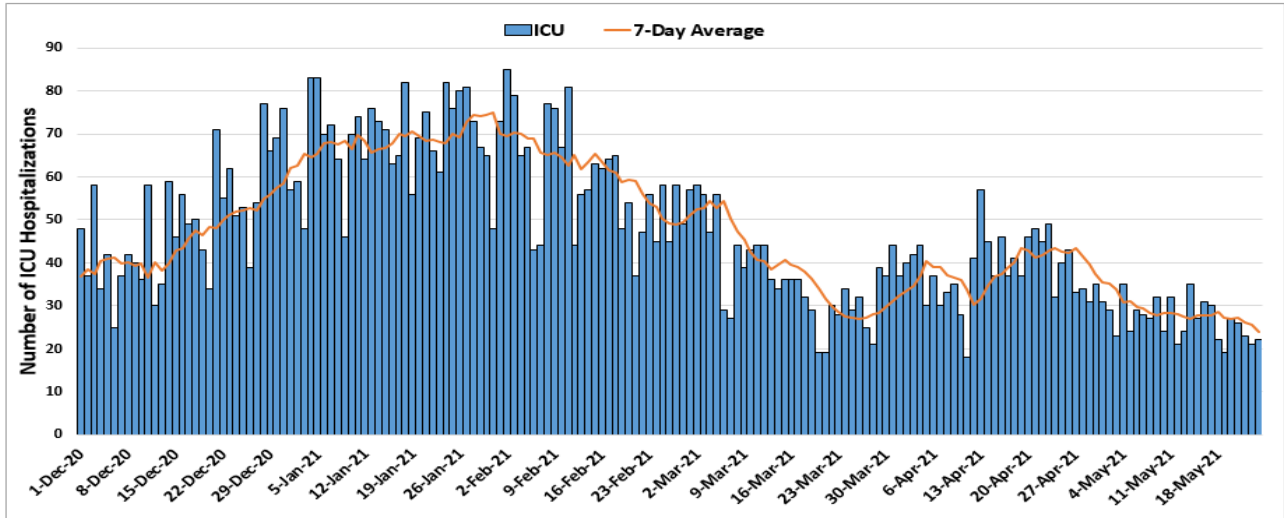
* Data points from March until November 30th are excluded to allow for clarity in trends/patterns

* Data points from February 15th, 2021 were omitted due to issues with data quality

- Data from the 11 hospitals included in this analysis has shown a downward trend in hospitalizations in late April through mid May, following some fluctuations in March and early April. These developments follow a significant decrease in hospitalizations from January and February.
- *Note: Data from February 15th, 2021 showed an erroneously high value and was subsequently omitted from the analysis. Steps are being taken to restore the quality of this data.*

4.3 ICU HOSPITALIZATIONS (CONFIRMED AND PENDING) BY DAY IN THE RICHMOND CATCHMENT AREA AS OF MAY 24, 2021

Total Daily COVID-19 ICU Hospitalizations, December 1st, 2020 – May 24th, 2021
Richmond Catchment Area (8249 of 17993)

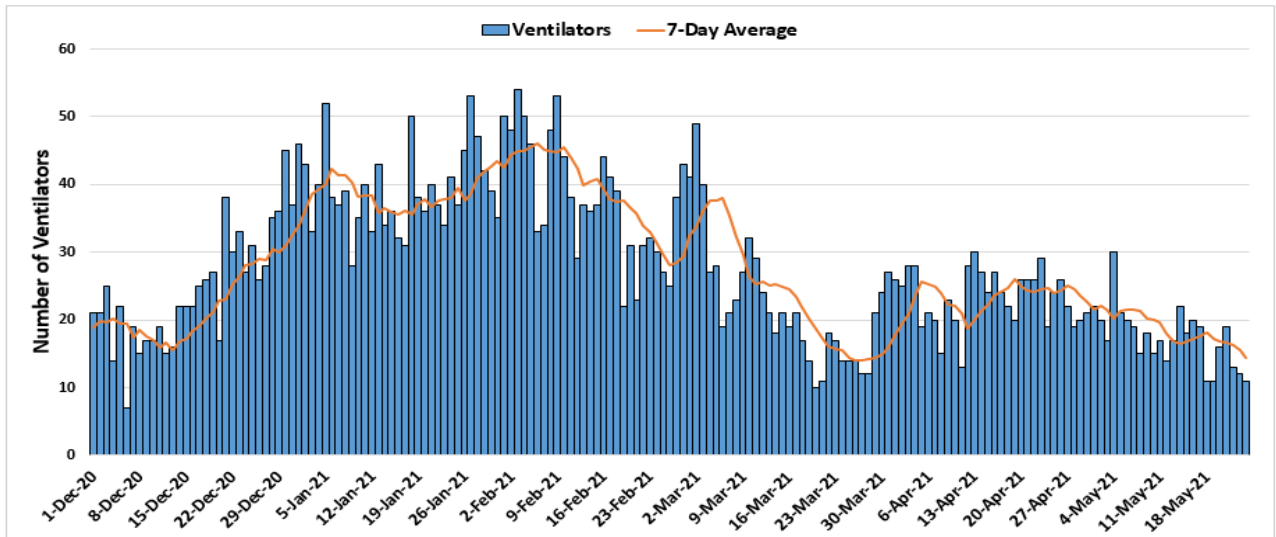


* Data points from March until November 30th are excluded to allow for clarity in trends/patterns

- Following a recent increase from late March through the middle of April, ICU hospitalizations showed a moderate decrease in late April and early May, and despite a brief plateau, seem to be decreasing again into late May.

4.4 VENTILATOR UTILIZATIONS (PATIENTS ON VENTILATORS) BY DAY IN THE RICHMOND CATCHMENT AREA AS OF MAY 24, 2021

Total Daily COVID-19 Ventilator Utilizations, December 1st, 2020 – May 24th, 2021
Richmond Catchment Area (4832 of 9975)



* Data points from March until November 30th are excluded to allow for clarity in trends/patterns

- After ventilator utilization increased over the month of April from low levels in March, utilization plateaued with some fluctuations, and has recently shown a mild decrease heading into late May.

5.0 COVID-19 FATALITIES

5.1 SUMMARY OF FATALITIES

Based on data from the [VDH Dashboard](#), COVID-19 deaths are decreasing overall, with a 7-day average of new deaths per day well below 1 in both districts. While there were zero deaths reported from COVID-19 over the past week in Richmond City, there were seven reported in Henrico County. Please note that trends in death data are frequently impacted by a lag in reporting. *Deaths by subgroup (sex, age, and race) are reported on a monthly basis.*

6.0 VACCINATION

6.1 VACCINE SUMMARY

Richmond and Henrico Health Districts are in Phase 2 of vaccination. Anyone 12 or older is eligible to receive the vaccine, with individuals 12 to 15 years old newly eligible for the Pfizer vaccine. As of May 24, 49.9% of the region's population has received at least one dose of the vaccine and 40.6% of the region's population has been fully vaccinated. Approximately 48.4% of Richmond and Henrico's combined population has received at least one dose and 39.0% of the two districts combined population has been fully vaccinated.

The majority of vaccine recipients in both districts have been female. The highest counts of vaccine recipients have been among 30-39 year olds in Richmond and 60-69 and 50-59 year olds in Henrico. Available data indicate that eligible White individuals have received the majority of the vaccine in both districts.

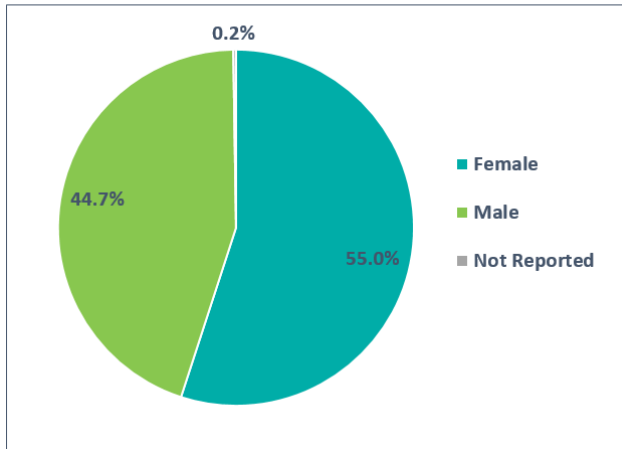
6.2 VACCINATIONS BY LOCALITY AS OF MAY 24, 2021 - SOURCE: VDH.VIRGINIA.GOV

HEALTH DISTRICT	LOCALITY	POPULATION	FIRST DOSES ADMINISTERED	SECOND DOSES ADMINISTERED
Chesterfield	Chesterfield	352,802	173,509	140,357
	Colonial Heights	17,370	7,247	5,724
	Powhatan	29,652	13,089	10,762
Chickahominy	Charles City	6,963	3,386	2,985
	Goochland	23,753	14,141	12,203
	Hanover	107,766	57,805	48,914
	New Kent	23,091	10,482	9,074
Henrico	Henrico	330,818	174,210	139,515
Richmond	Richmond City	230,436	97,610	79,453
Total		1,122,651	551,479	448,987

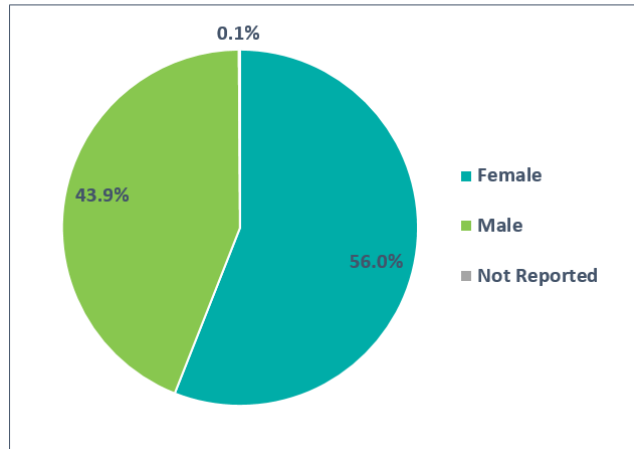
We have set a goal of vaccinating 75% of the population to reach herd immunity. First and second doses of the Pfizer vaccine must be administered at least 21 days apart. First and second doses of the Moderna vaccine must be administered at least 28 days apart. People who received the Johnson & Johnson vaccine, which is a single dose, are included in the count of first doses administered.

6.3 VACCINE DISTRIBUTION BY DEMOGRAPHIC SUBGROUP

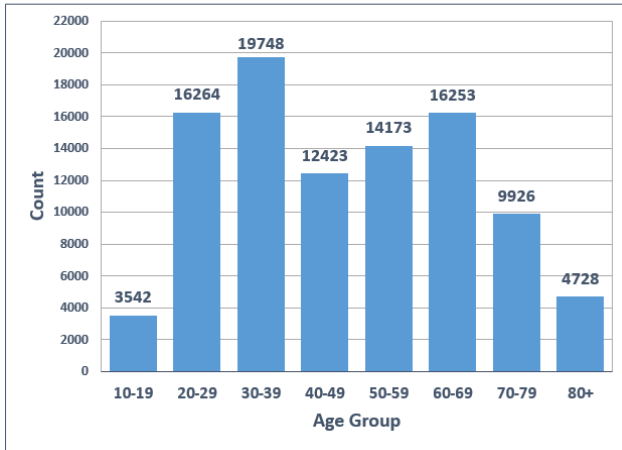
Total Vaccine Recipients by Sex in Richmond
-- May 24, 2021 (N = 97,057)



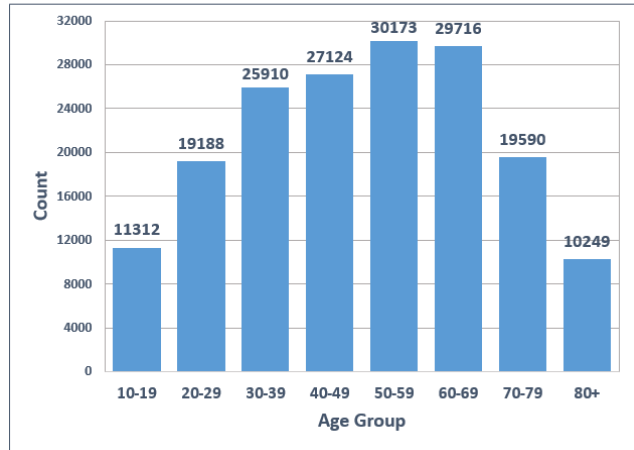
Total Vaccine Recipients by Sex in Henrico
-- May 24, 2021 (N = 173,262)



Total Vaccine Recipients by Age Group in Richmond
-- May 24, 2021 (N = 97,057)

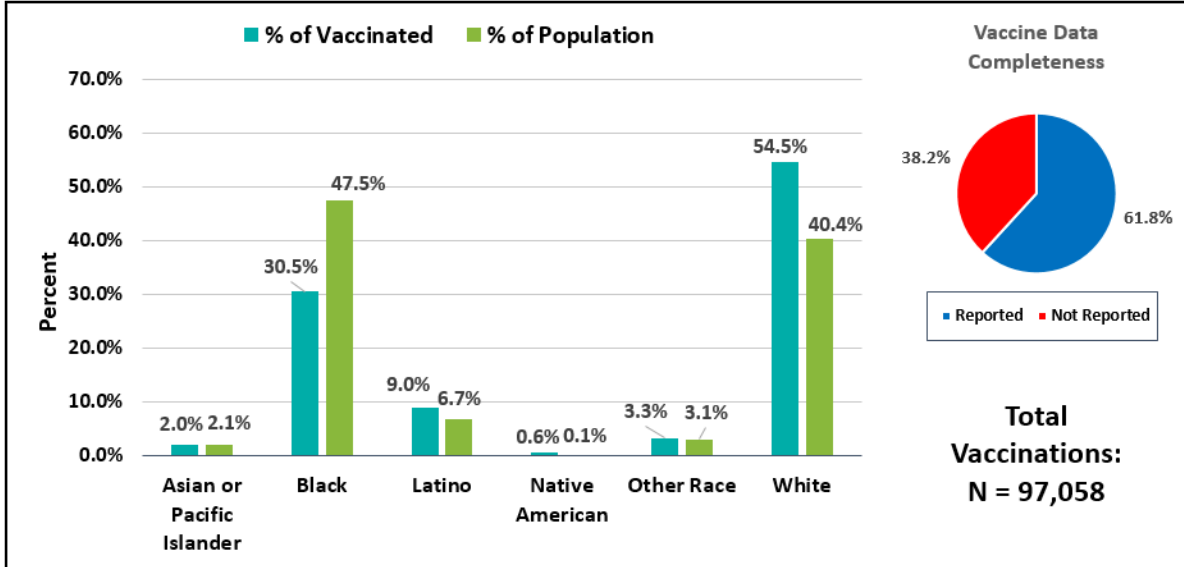


Total Vaccine Recipients by Age Group in Henrico
-- May 24, 2021 (N = 173,262)



The following charts compare the percentage breakdown of racial or ethnic identification of vaccinated individuals to the expected percentage breakdown of the racial or ethnic identification of the population. A notable discrepancy can be seen when looking at Black individuals, who comprise 47.5% of the Richmond population and 29.4% of the Henrico population yet only 30.5% of vaccine recipients in Richmond and 20.8% of vaccine recipients in Henrico.

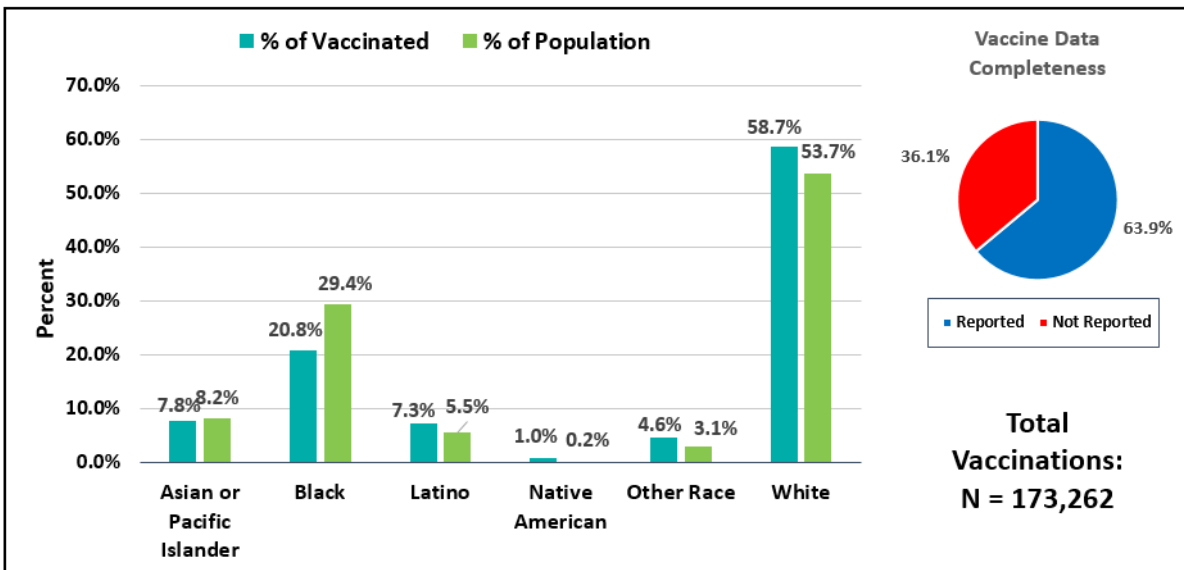
Vaccine Recipients vs. Population by Race/Ethnicity Percentages in Richmond – Dec 15, 2020 to May 24, 2021



*For race/ethnicity of vaccine recipients, "Not Reported" comprises 38.2% (n=37,091).

*Missing and Unknown Ethnicities were assumed to be of Non-Hispanic ethnicity.

Vaccine Recipients vs. Population by Race/Ethnicity Percentages in Henrico – Dec 15, 2020 to May 24, 2021

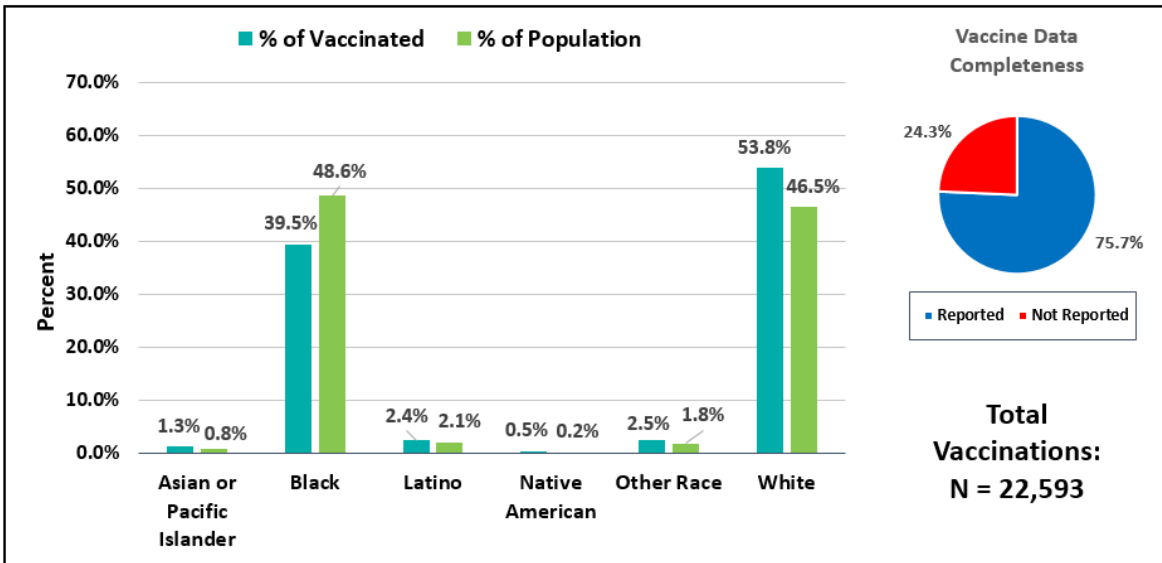


*For race/ethnicity of vaccine recipients, "Not Reported" comprises 36.1% (n=62,517).

*Missing and Unknown Ethnicities were assumed to be of Non-Hispanic ethnicity.

The figures below compare the percentage breakdown by race and ethnicity specifically for individuals 65 and over. In Richmond City, Black individuals comprise 48.6% of the population of those aged 65 years and older, yet make up only 39.5% of vaccine recipients. This discrepancy can also be noted in Henrico, where Black individuals make up 20.0% of the population, yet thus far have only comprised 19.8% of vaccine recipients.

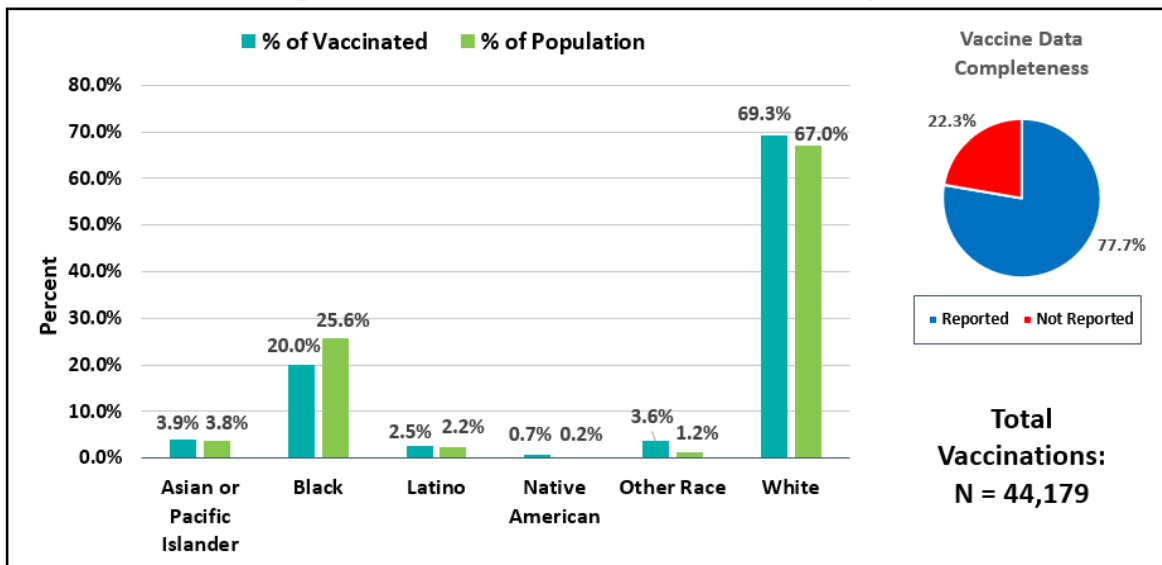
Vaccine Recipients vs. Population 65 and Over by Race/Ethnicity Percentages in Richmond – Dec 15, 2020 to May 24, 2021



*For race/ethnicity of vaccine recipients, "Not Reported" comprises 24.3% (n=5,975).

*Missing and Unknown Ethnicities were assumed to be of Non-Hispanic ethnicity.

Vaccine Recipients vs. Population 65 and Over by Race/Ethnicity Percentages in Henrico – Dec 15, 2020 to May 24, 2021



*For race/ethnicity of vaccine recipients, "Not Reported" comprises 22.3% (n=10,689).

*Missing and Unknown Ethnicities were assumed to be of Non-Hispanic ethnicity.