

WEEKLY COVID-19 REPORT FOR EXTERNAL USE

MON MAY 31 - MON JUNE 07, 2021

CONTENTS

KEY TAKEAWAYS	2
1.0 COVID-19 SNAP SHOT	3
1.1 CONFIRMED CASES, HOSPITALIZATIONS, FATALITIES, AND PROBABLE CASES BY COUNTY	3
1.2 CURRENT COVID-19 HOSPITALIZATIONS IN THE RICHMOND CATCHMENT AREA ON JUNE 7, 2021	4
2.0 COVID-19 TESTING ENCOUNTERS AND POSITIVITY	4
2.1 TESTING SUMMARY	4
3.0 COVID-19 CASES	5
3.1 SUMMARY OF CASES	5
3.2 CASE REPORTS TRENDS BY DATE (SOURCE-VDH WEBSITE)	5
3.3 CASES BY SEX BY COUNTY	7
3.4 CASES BY AGE GROUP BY COUNTY	8
3.5 CASES AND POPULATION PROPORTIONS BY RACE AND ETHNICITY BY COUNTY	9
4.0 COVID-19 HOSPITALIZATIONS	11
4.1 SUMMARY OF HOSPITALIZATIONS	11
4.2 HOSPITALIZATIONS (CONFIRMED AND PENDING) BY DAY IN THE RICHMOND CATCHMENT AREA AS OF JUNE 7, 2021	11
4.3 ICU HOSPITALIZATIONS (CONFIRMED AND PENDING) BY DAY IN THE RICHMOND CATCHMENT AREA AS OF JUNE 7, 2021	12
4.4 VENTILATOR UTILIZATIONS (PATIENTS ON VENTILATORS) BY DAY IN THE RICHMOND CATCHMENT AREA AS OF JUNE 7, 2021	12
5.0 COVID-19 FATALITIES	13
5.1 SUMMARY OF FATALITIES	13
6.0 VACCINATION	13
6.1 VACCINE SUMMARY	13
6.2 PERCENTAGE OF VACCINATION GOALS REACHED BY POPULATION	13
6.3 VACCINATIONS BY LOCALITY AS OF JUNE 7, 2021 - SOURCE: VDH.VIRGINIA.GOV	14
6.4 VACCINE DISTRIBUTION BY DEMOGRAPHIC SUBGROUP	15

KEY TAKEAWAYS

- According to the [VDH Pandemic Metrics Dashboard](#), in Richmond, there were **21.0 new cases per 100,000 in the last week**, an increase from last week. Cases are considered fluctuating. Percent positivity for the locality is 2.0% and is still decreasing overall. In Henrico, there were **12.5 new cases per 100,000 in the last week**. Cases have been decreasing in Henrico for the last 64 days. Percent positivity for the locality is 1.5% and also decreasing.
- Cases in both districts continue to decline, with a 7-day average of 3.0 new cases per day, per 100,000 population in Richmond and 1.8 new cases per day, per 100,000 population in Henrico.
 - Due to recent changes in VEDSS that have impacted the date range of data available for analysis, we have had to limit the demographic analysis in this report to data from the last 4 weeks. Within this range, **females** comprise a higher proportion of cases and **20-29 year olds** continue to lead case counts in both districts. Regarding race and ethnicity, the highest proportion of cases is still among **Black individuals** in Richmond and now in Henrico as well.
- Based on data from the [VDH Dashboard](#), **hospitalizations** are fluctuating among Richmond residents and decreasing among Henrico residents. Looking more broadly at health systems within the Richmond catchment area, hospitalizations, ICU hospitalizations, and ventilator utilizations are also decreasing. ICU Hospitalizations have shown recent fluctuations but have overall stayed at a decreased level as compared to January of this year. Similarly, although generally low, ventilator numbers have shown recent mild upticks. All 11 hospitals in the Richmond catchment area are still operating at a normal clinical status. *Hospitalizations by subgroup (sex, age, and race) are reported on a monthly basis.*
- Based on data from the [VDH Dashboard](#), **COVID-19 deaths** are decreasing overall, with a 7-day average of new deaths per day well below 1 in both districts and 0 new deaths reported in the last week. Please note that trends in death data are frequently impacted by a lag in reporting. *Deaths by subgroup (sex, age, and race) are reported on a monthly basis.*
- Richmond and Henrico Health Districts are in Phase 2 of **vaccination**. Anyone 12 or older is eligible to receive a vaccine. As of June 7, 52.4% of the region's population has received at least one dose of the vaccine and 43.6% of the region's population has been fully vaccinated. Approximately 50.9% of Richmond and Henrico's combined population has received at least one dose and 42.1% of the two districts combined population has been fully vaccinated.
 - The majority of vaccine recipients in both districts have been **female**. In both Richmond and Henrico, **older age groups** have consistently been vaccinated at a higher rate than younger age groups, with individuals in Richmond 65 and over, in Henrico 65 and over, and in Henrico between 50-64 all reaching the 70% goal for vaccinated percentage. Available data indicate that eligible **White individuals** have received the majority of the vaccine in both districts.

1.0 COVID-19 SNAP SHOT

1.1 CONFIRMED CASES, HOSPITALIZATIONS, FATALITIES, AND PROBABLE CASES BY COUNTY

CASE STATUS	RICHMOND CITY	HENRICO COUNTY	VIRGINIA
New cases this week (June 6)	36	19	1234
All cases	17124	25554	676831
Confirmed cases	14089	18845	526688
Hospitalizations	793	1039	28431
Deaths	233	551	9489
Probable cases	3035	6709	150143
Hospitalizations	21	42	1530
Deaths	36	69	1756
Case rate per 100,000	7431.1	7724.5	7929.6

Weekly cases added are estimated as the difference between the cases recorded from the current and prior week

*Case Rate per 100,000=(confirmed+probable)/population count *100,000.*

Population estimates for the case rate are from 2019 data compiled by the National Center for Health Statistics (NCHS).

1.2 CURRENT COVID-19 HOSPITALIZATIONS IN THE RICHMOND CATCHMENT AREA ON JUNE 7, 2021

The data included in this section comes from VHASS and it includes data from the following hospitals: VCU Health System, Retreat Doctors', Bon Secours Community, CWJ Chippenham, CWJ Johnson Willis, VA Medical Center, Bon Secours St. Mary's, Henrico Doctors, and Parham Doctors, Bon Secours St. Francis, and Memorial Regional Medical Center.

	TOTAL IN USE FOR COVID-19	CURRENTLY AVAILABLE
Confirmed Hospitalizations	61	157
Pending Hospitalizations	7	
Confirmed - ICU	19	54
Pending - ICU	0	
Confirmed - Ventilators	13	312
Pending - Ventilators	0	

Within these 11 hospitals that comprise the Richmond catchment area, there are currently 157 total available hospital beds, 54 available adult ICU beds, and 312 available ventilators. Based on the VHASS hospital dashboard on June 7, 2021, all 11 hospitals are operating at normal clinical status.**

**A clinical status of "normal" indicates that hospital clinical resources are operating within normal conditions. A clinical status of "full" indicates that hospital clinical resources are exceeded and acceptable care cannot be provided to additional patients. Diversion or Community surge response is required.

2.0 COVID-19 TESTING ENCOUNTERS AND POSITIVITY

2.1 TESTING SUMMARY

Total tests by testing modality and the associated 7-day average in percent positivity are summarized in the table below. Data are from the [VDH public dashboard](#) on June 06, 2021.

	RICHMOND CITY		HENRICO COUNTY	
	Tests	Positivity	Tests	Positivity
PCR*	254,989	2.2%	382,953	1.8%
Antigen	48,730	1.6%	100,248	2.2%
Total (PCR, antigen, and antibody)	308,223	2.6%	492,542	2.6%

*All testing metrics included in previous reports have been based on PCR tests

3.0 COVID-19 CASES

3.1 SUMMARY OF CASES

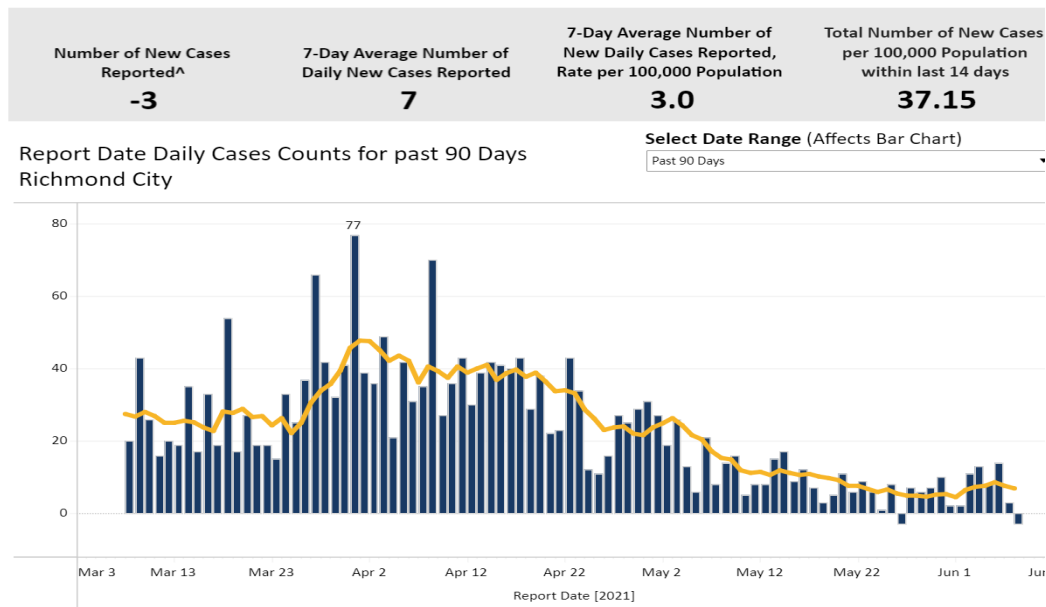
Cases

Cases in both districts continue to decline, with a 7-day average of 2.6 new cases per day, per 100,000 population in Richmond and 5.7 new cases per day, per 100,000 population in Henrico.

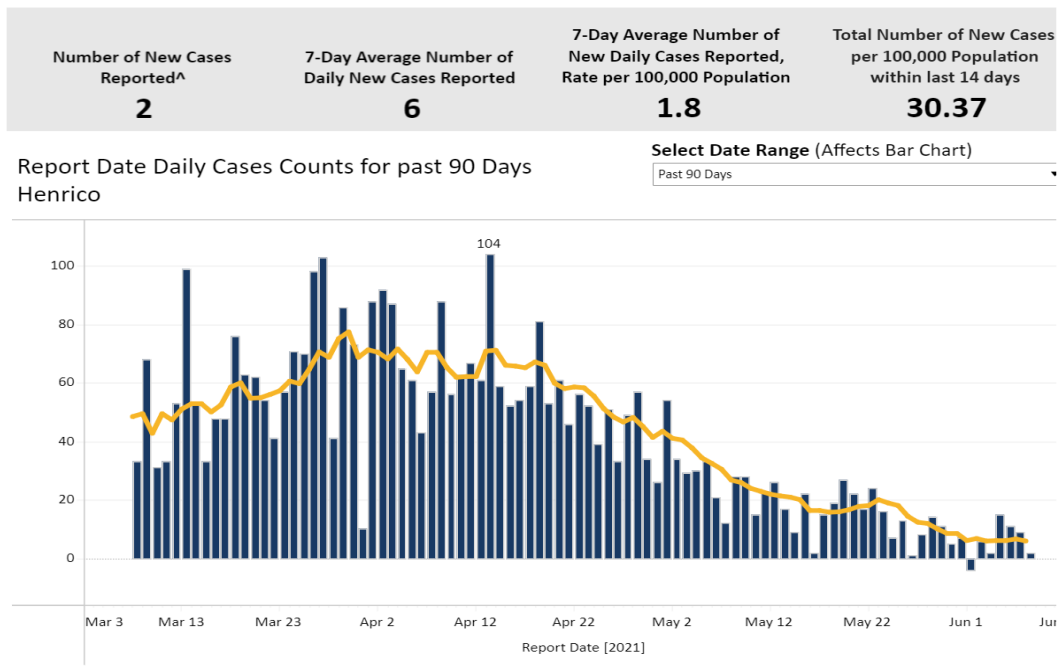
Case Demographics

Due to recent changes in VEDSS which have impacted the date range of data available for analysis, we have had to limit the demographic analysis in this report to data from the last 4 weeks. Within this range, females comprise a higher proportion of cases and 20-29 year olds continue to lead case counts in both districts. Regarding race and ethnicity, the highest proportion of cases is still among Black individuals in Richmond and now in Henrico as well.

3.2 CASE REPORTS TRENDS BY DATE (SOURCE-VDH WEBSITE)



- In Richmond, the 7-day average number of daily new cases reported this week shows a continued decrease in overall case counts. No new cases were reported on June 7, 2021. The 7-day average of new daily cases is currently 3.0 per 100,000 population.



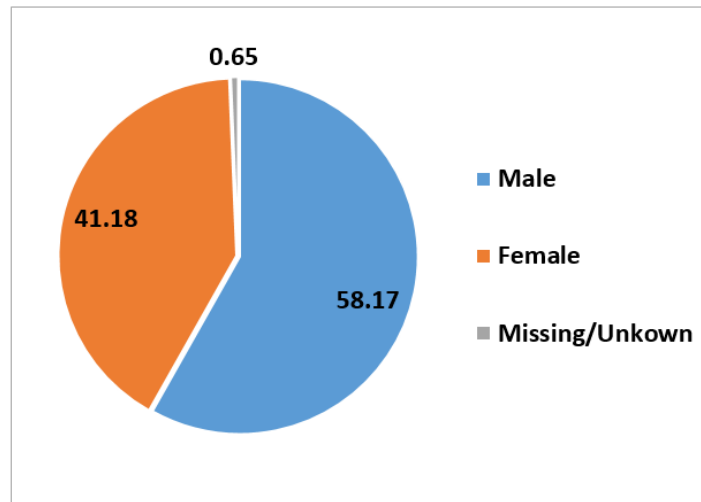
- In Henrico, the number of new cases reported per day is fluctuating, though still at a much lower count than in previous months. A total of 2 new cases were reported on June 7, 2021. The 7-day average number of cases reported daily in Henrico County is 2 per 100,000 population.

3.3 CASES BY SEX BY COUNTY

All percentages are based on overall case distribution, rather than the proportion of known cases for each measure, and therefore may not correspond directly with VDH percentages.

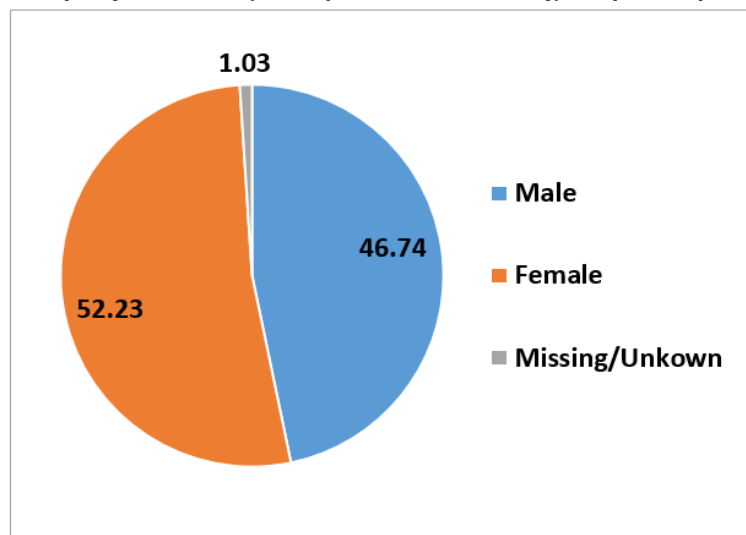
Recent changes in VEDSS have impacted the date range of data available for analysis. The charts below show data from the last 4 weeks. We hope to be able to show cumulative data in future reports.

**COVID-19 case distribution by Sex in the last 4 weeks
(May 3 – June 7, 2021)—Richmond City, VA (N=153)**



- In Richmond, over the last four weeks, females have comprised a majority of cases (58.17%) when compared to males (41.18%). Sex data has been Missing/Unknown for 0.65% of cases over the last four weeks.

**COVID-19 case distribution by Sex in the last 4 weeks
(May 3 – June 7, 2021)— Henrico County, VA (N=291)**

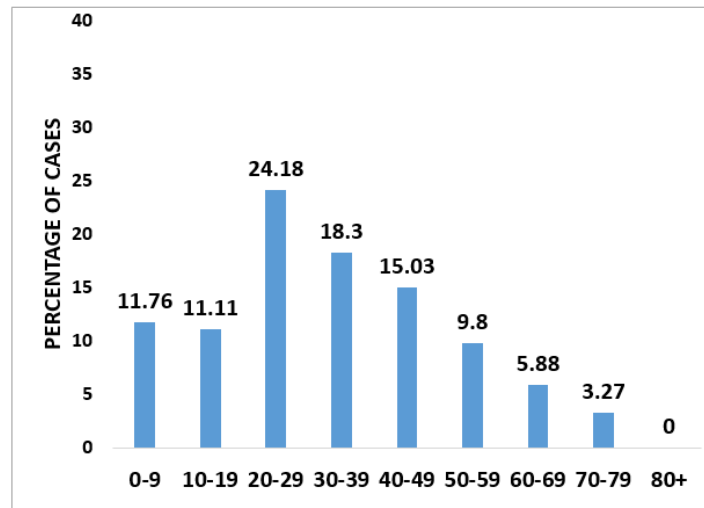


- In Henrico, over the last four weeks, females have comprised 52.23% of cases, whereas males have comprised 46.74% of cases. Sex data for 1.03% of cases over the last four weeks is unknown.

3.4 CASES BY AGE GROUP BY COUNTY

Recent changes in VEDSS have impacted the date range of data available for analysis. The charts below show data from the last 4 weeks. We hope to be able to show cumulative data in future reports.

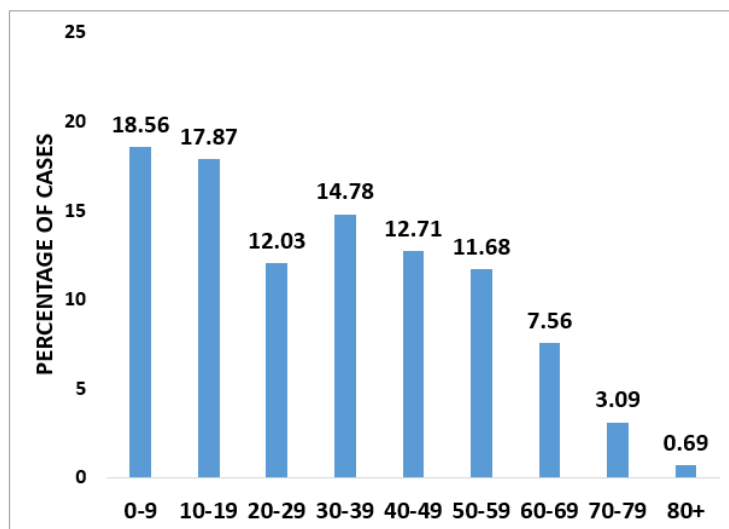
**COVID-19 case distribution by Age in the last 4 weeks
(May 3 – June 7, 2021)—Richmond City, VA (N=153)**



Age is missing for .65% (n=1) cases

- In Richmond City, individuals aged 20-29 still comprise the highest number of cases in the last four weeks (24.18%) , followed by individuals aged 30-39 years (15.03%).

**COVID-19 case distribution by Age in the last 4 weeks
(May 3 – June 7, 2021)— Henrico County, VA (N=291)**



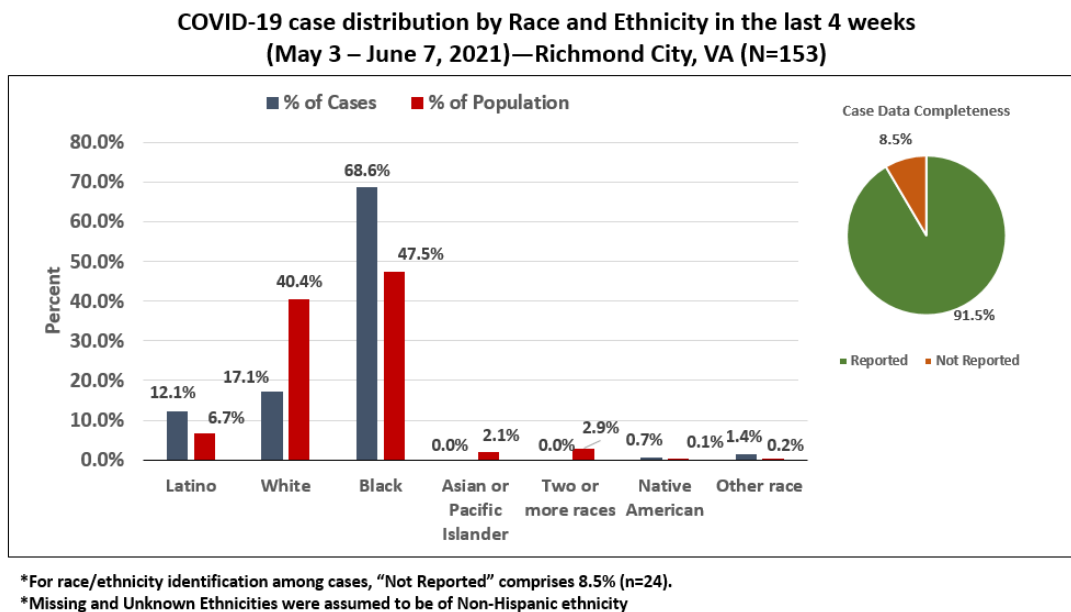
Age is missing for 1.02% (n=3) cases

- In Henrico, individuals aged 20-29 comprise the highest percentage of cases (16.4%) followed closely by individuals aged 30-39 (15.6%) and individuals aged 50-59 (15.2%) over the last four weeks. Cases by age group in Henrico County show a much more uniform distribution than in Richmond City.

3.5 CASES AND POPULATION PROPORTIONS BY RACE AND ETHNICITY BY COUNTY

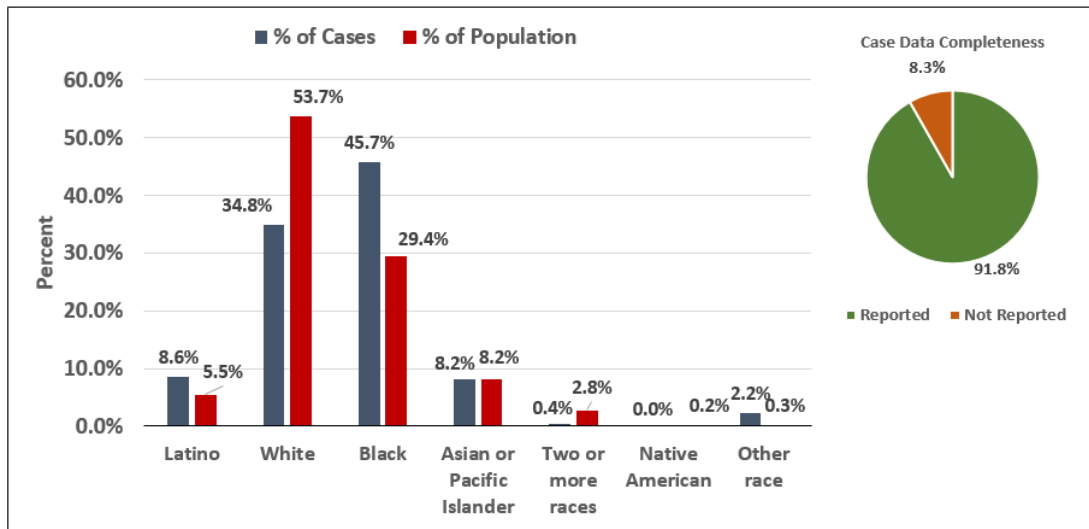
Population estimates for the Race and Ethnicity subgroup analyses are based on 2019 5-Year estimates from the American Community Survey by the U.S. Census Bureau.

Recent changes in VEDSS have impacted the date range of data available for analysis. The charts below show data from the last 4 weeks. We hope to be able to show cumulative data in future reports.



- In Richmond, the case burden for Black individuals over the last 4 weeks (68.6%) is disproportionately high relative to their population percentage (47.5%), while the case burden for White individuals is disproportionately low (17.1%) relative to their population percentage (40.4%).

**COVID-19 case distribution by Race and Ethnicity in the last 4 weeks
(May 3 – June 7, 2021)— Henrico County, VA (N=291)**



*For race/ethnicity identification among cases, "Not Reported" comprises 8.25% (n=24).

*Missing and Unknown Ethnicities were assumed to be of Non-Hispanic ethnicity

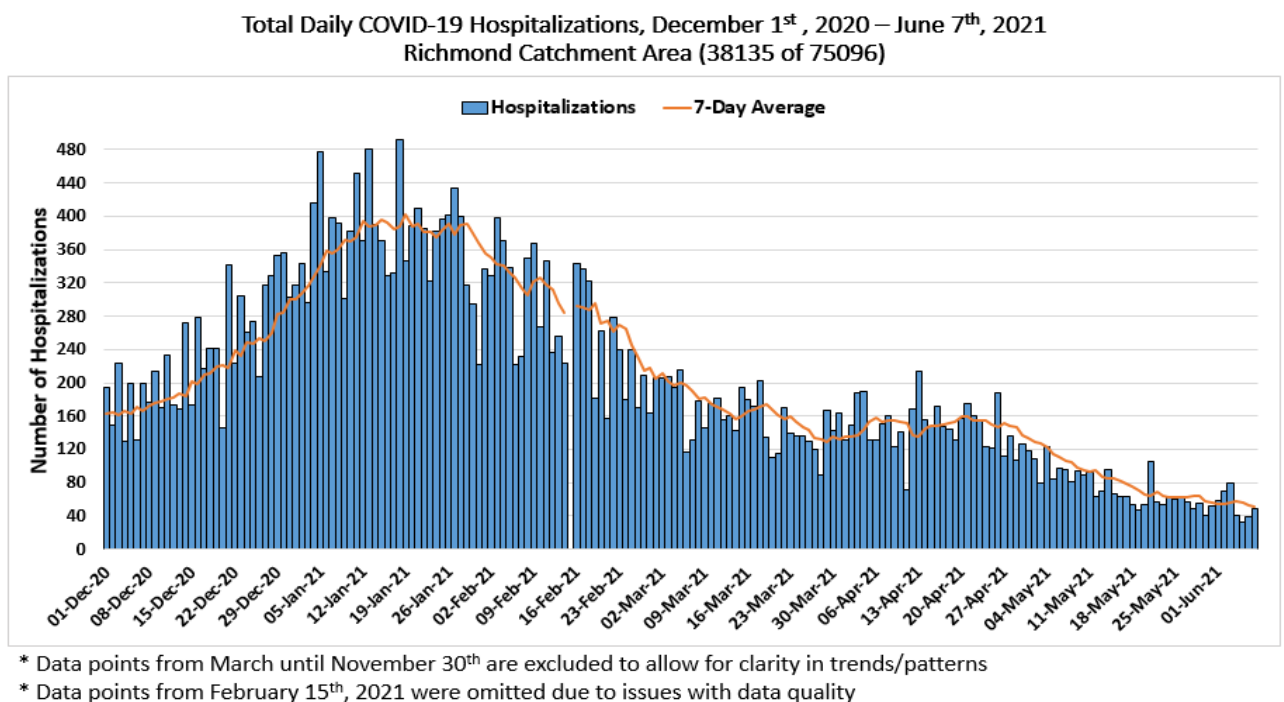
- In Henrico, the case burden for Black individuals over the last 4 weeks (45.7%) is disproportionately high relative to their population percentage (29.4%). The case burden for White individuals has been disproportionately low over the last four weeks (34.8%) relative to their population percentage (53.7%). The case burden over the past four weeks for Latino individuals (8.6%) has been disproportionately high as compared to their population percentage (5.5%).

4.0 COVID-19 HOSPITALIZATIONS

4.1 SUMMARY OF HOSPITALIZATIONS

Hospitalizations among Richmond residents are fluctuating with a 7-day average of about 1. Hospitalizations among Henrico residents are decreasing. Looking more broadly at health systems within the Richmond catchment area, hospitalizations, ICU hospitalizations, and ventilator utilizations are also decreasing. ICU Hospitalizations have shown recent fluctuations but have overall stayed at a decreased level as compared to January of this year. Similarly, although generally low, ventilator numbers have shown recent mild upticks. All 11 hospitals in the Richmond catchment area are still operating at a normal clinical status. *Hospitalizations by subgroup (sex, age, and race) are reported on a monthly basis.*

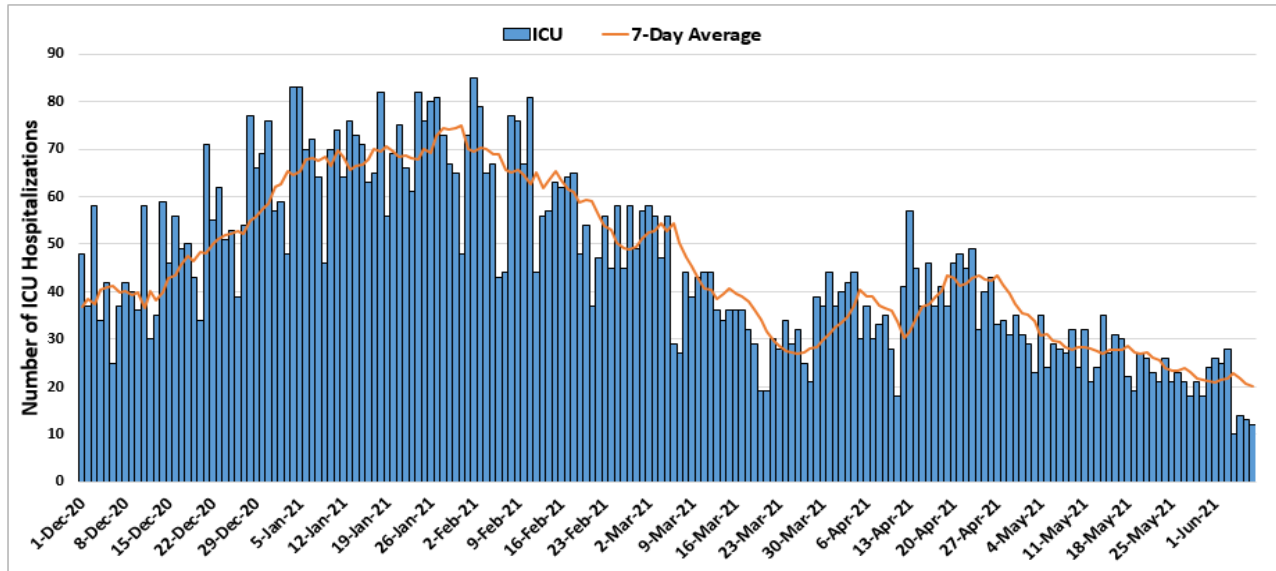
4.2 HOSPITALIZATIONS (CONFIRMED AND PENDING) BY DAY IN THE RICHMOND CATCHMENT AREA AS OF JUNE 7, 2021



- In Richmond, the 7-day moving average has shown a fluctuating but relatively low and stable downward trend in recent weeks, with only a few hospital admissions reported in the last week. Notably, this trend may be impacted by a lag in reporting.
- *Note: Data from February 15th, 2021 showed an erroneously high value and was subsequently omitted from the analysis. Steps are being taken to restore the quality of this data.*

4.3 ICU HOSPITALIZATIONS (CONFIRMED AND PENDING) BY DAY IN THE RICHMOND CATCHMENT AREA AS OF JUNE 7, 2021

Total Daily COVID-19 ICU Hospitalizations, December 1st, 2020 – June 7th, 2021
Richmond Catchment Area (8527 of 18271)

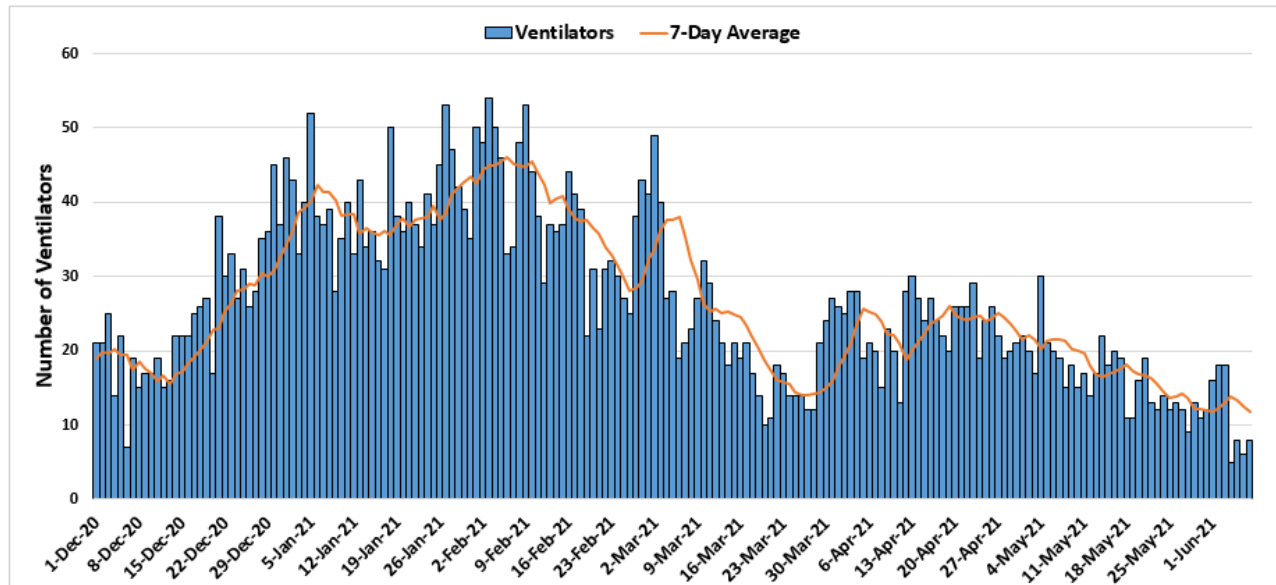


* Data points from March until November 30th are excluded to allow for clarity in trends/patterns

- In Henrico, the 7-day moving average has shown a relatively low and stable trend in March through June following fluctuating higher hospitalization rates in January through February. Notably, this trend may be impacted by a lag in reporting.

4.4 VENTILATOR UTILIZATIONS (PATIENTS ON VENTILATORS) BY DAY IN THE RICHMOND CATCHMENT AREA AS OF JUNE 7, 2021

Total Daily COVID-19 Ventilator Utilizations, December 1st, 2020 – June 7th, 2021
Richmond Catchment Area (4996 of 10139)



* Data points from March until November 30th are excluded to allow for clarity in trends/patterns

- Following a peak in Hospitalizations January of 2021, Hospitalizations in the Richmond Catchment area showed a dramatic decrease through early March, a plateau lasting until late April, and an overall decrease thereafter leading into early June.

5.0 COVID-19 FATALITIES

5.1 SUMMARY OF FATALITIES

Deaths based on date of death in both districts are remaining relatively low and stable entering the month of June, with two deaths in the last three weeks in Richmond County, and zero deaths over the past three weeks in Henrico County. Please note that trends in death data are frequently impacted by a lag in reporting. *Deaths by subgroup (sex, age, and race) are reported on a monthly basis.*

6.0 VACCINATION

6.1 VACCINE SUMMARY

Richmond and Henrico Health Districts are in Phase 2 of vaccination. Anyone 12 or older is eligible to receive a vaccine. As of June 7, 52.4% of the region's population has received at least one dose of the vaccine and 43.6% of the region's population has been fully vaccinated. Approximately 50.9% of Richmond and Henrico's combined population has received at least one dose and 42.1% of the two districts combined population has been fully vaccinated. Local health departments currently appear to be administering the largest percentage of vaccines to Richmond and Henrico residents, compared with other providers.

The majority of vaccine recipients in both districts have been female. In both Richmond and Henrico, older age groups have consistently been vaccinated at a higher rate than younger age groups, with individuals in Richmond 65 and over, in Henrico 65 and over, and in Henrico between 50-64 all reaching the 70% goal for vaccinated percentage. Available data indicate that eligible White individuals have received the majority of the vaccine in both districts. Page 37 includes an estimated breakdown of vaccination uptake by race and age subgroups.

6.2 PERCENTAGE OF VACCINATION GOALS REACHED BY POPULATION

		POPULATION	POPULATION GOAL (70%)	PEOPLE WITH AT LEAST ONE DOSE	PEOPLE FULLY VACCINATED
Richmond	12-17	11,150	7,805	2,882 (25.8%)	1,131 (10.1%)
	18+	190,750	133,525	99,310 (52.1%)	84,122 (44.1%)
	65+	31,809	22,266	23,219 (73.0%)	20,467 (64.3%)
Henrico	12-17	25,954	18,168	10,189 (39.3%)	4,132 (15.9%)
	18+	256,660	179,662	173,211 (67.5%)	146,873 (57.2%)
	65+	52,720	36,904	45,360 (86.0%)	40,499 (76.8%)

Population totals are based on 2019 data from the National Center for Health Statistics (NCHS). Please note - this is a change from previous reports which used Census data to estimate population by age group.

Nationally, the Biden administration is using the **percentage of adults (individuals 18 and over)** to track progress in vaccination.

Though the percentage of the population needed to reach herd immunity is still uncertain, in line with federal guidance, we have set an overall goal of vaccinating 70% of the population. First and second doses of the Pfizer vaccine must be administered at least 21 days apart. First and second doses of the Moderna vaccine must be administered at least 28 days apart. People who received the Johnson & Johnson vaccine, which is a single dose, are included in the count of first doses administered.

6.3 VACCINATIONS BY LOCALITY AS OF JUNE 7, 2021 - SOURCE: [VDH.VIRGINIA.GOV](https://www.vdh.virginia.gov)

HEALTH DISTRICT	LOCALITY	TOTAL POPULATION	FIRST DOSES ADMINISTERED	SECOND DOSES ADMINISTERED
Chesterfield	Chesterfield	352,802	182,697	150,167
	Colonial Heights	17,370	7,617	6,118
	Powhatan	29,652	13,735	11,493
Chickahominy	Charles City	6,963	3,497	3,148
	Goochland	23,753	14,676	12,862
	Hanover	107,766	60,429	51,845
	New Kent	23,091	10,903	9,489
Henrico	Henrico	330,818	183,400	151,005
Richmond	Richmond City	230,436	102,192	85,253
Total		1,105,281	579,146	481,380

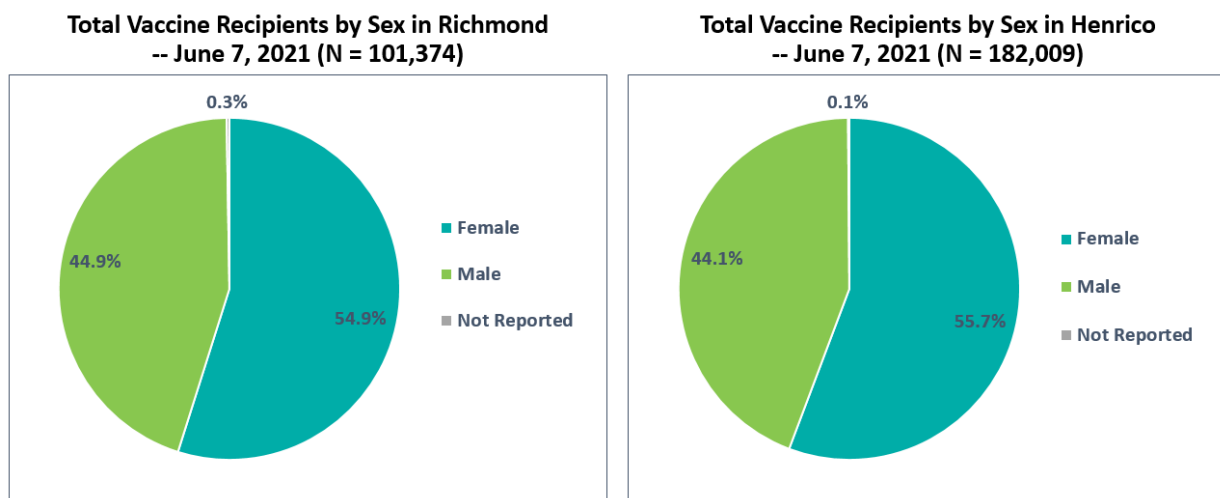
Population totals are based on 2019 data from the National Center for Health Statistics (NCHS). Please note - this is a change from previous reports which used Census data to estimate population by age group.

We have set a goal of vaccinating 75% of the population to reach herd immunity. First and second doses of the Pfizer vaccine must be administered at least 21 days apart. First and second doses of the Moderna vaccine must be administered at least 28 days apart. People who received the Johnson & Johnson vaccine, which is a single dose, are included in the count of first doses administered.

6.4 VACCINE DISTRIBUTION BY DEMOGRAPHIC SUBGROUP

UPDATE: Population estimates for age subgroups and for race and ethnicity subgroups have been changed for this report from the U.S. Census Bureau's American Community Survey (ACS) 2019 5-year estimates to the National Center for Health Statistics (NCHS) 2019 estimates to align with estimates used by other VDH metrics. This change also involves new race and ethnicity categories: Latino or Hispanic, Non-Hispanic White, Black or African-American, Asian or Pacific Islander, and Native American. Racial groups such as Two or more Races and Other Race have been excluded from the following metrics as they are without corresponding NCHS estimates, but the counts for these groups can be seen in the footnotes immediately below.

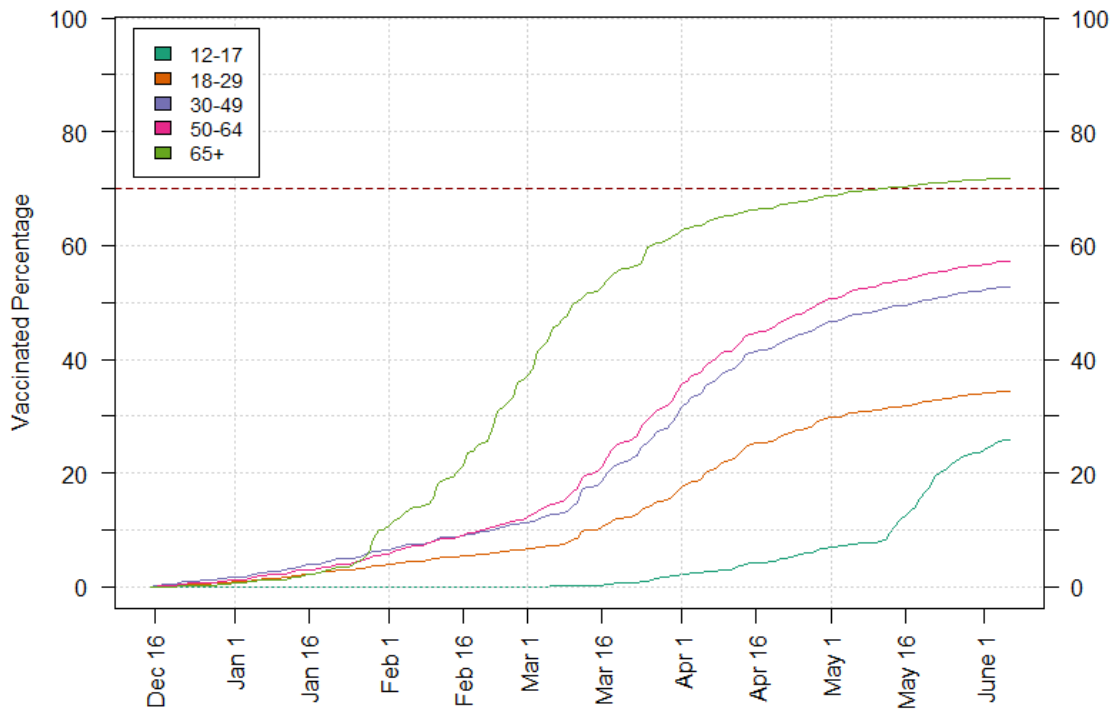
In both Richmond and Henrico, a majority of vaccinated individuals have been female.



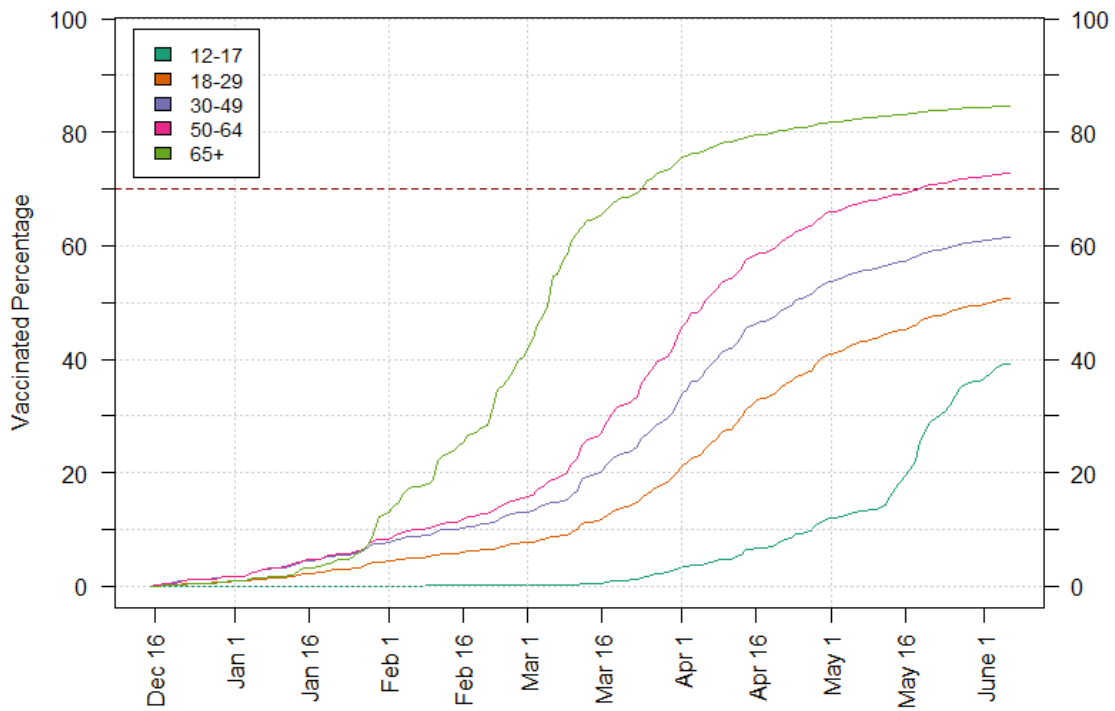
The following charts track vaccination rates by age group over time since vaccinations first began in mid-December. In both Richmond and Henrico, we can see a steep increase in vaccination rates in February and early March for individuals 65 and over such that over 70% of this age group is now vaccinated but new vaccinations are rising slowly. Individuals aged 18 to 29, 30 to 49, and 50 to 64 saw sharp increases in vaccination rates in mid-March through mid-April, with a steady but slower increase in vaccinations from mid-April through early June. Among individuals aged 12 to 17, vaccination rates increased at a slow pace until vaccine opportunities opened up to the general population and then individuals aged 12 to 15 were able to get vaccinated, at which point we have seen a sharp increase in vaccination rates that has not yet noticeably slowed.

Individuals in Henrico have seen consistently higher vaccination rates across all age groups. Individuals in Henrico 65 and over reached the 70% vaccinated threshold in late March while individuals in Richmond 65 and over did not reach this threshold until early May. In addition, individuals in Henrico between 50 and 64 reached this threshold in mid-May, while the same age group in Richmond is still well short of this level.

**Vaccinated Percentage over Time by Age Group,
Based on Reported Data in Richmond**

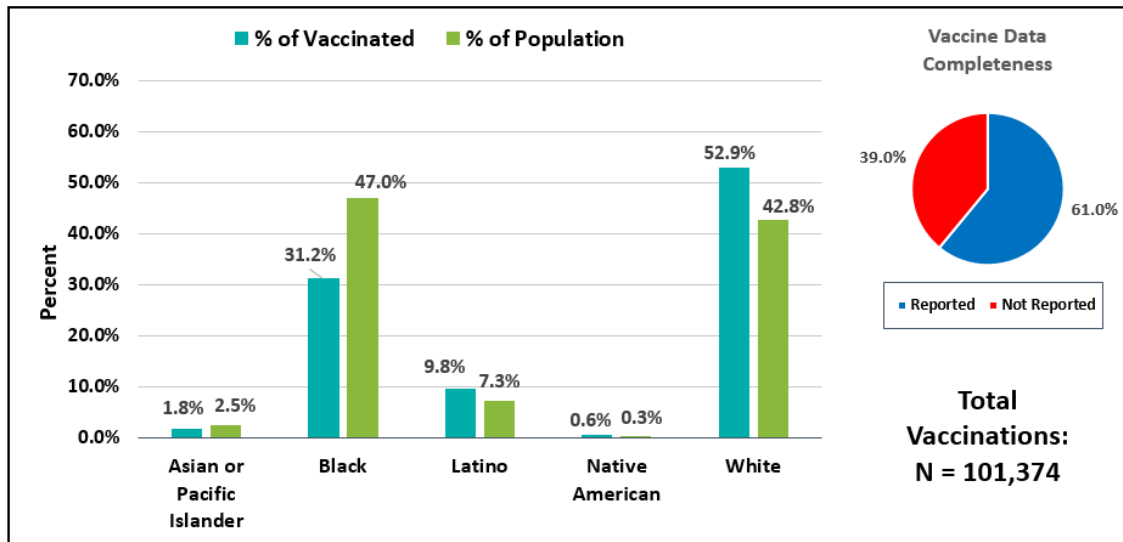


**Vaccinated Percentage over Time by Age Group,
Based on Reported Data in Henrico**



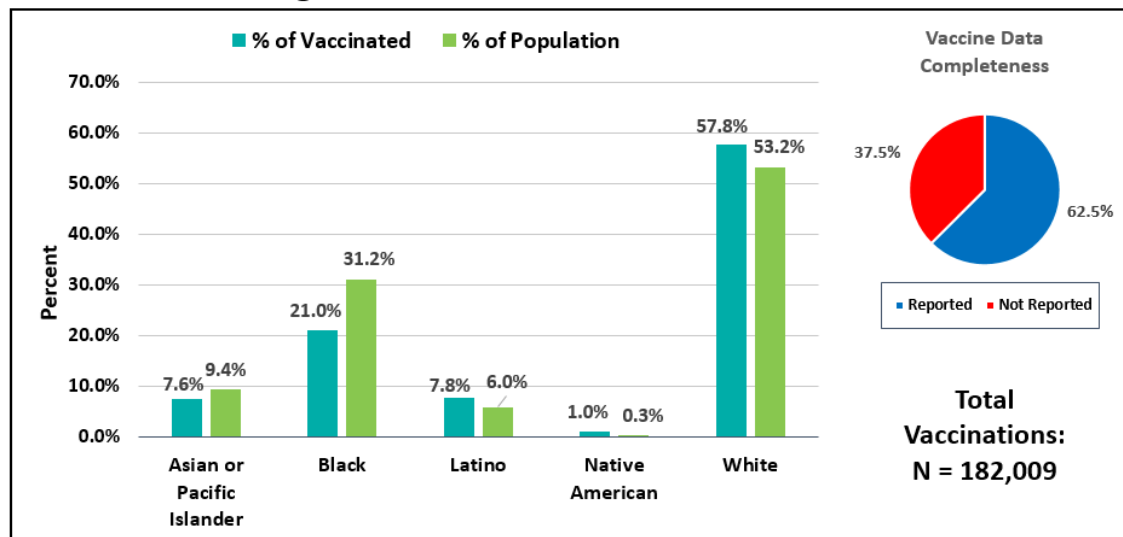
The following charts compare the percentage breakdown of racial or ethnic identification of vaccinated individuals to the expected percentage breakdown of the racial or ethnic identification of the population. A notable discrepancy can be seen when looking at Black individuals, who comprise 47.0% of the Richmond population and 31.2% of the Henrico population yet only 31.2% of vaccine recipients in Richmond and 20.8% of vaccine recipients in Henrico.

Vaccine Recipients vs. Population by Race/Ethnicity Percentages in Richmond – Dec 15, 2020 to June 7, 2021



- * For race/ethnicity of vaccine recipients, "Not Reported" comprises 39.0% (n=39,376).
- * Individuals identifying as "Other Race" account for 2,263 vaccinations.
- * Missing and Unknown Ethnicities were assumed to be of Non-Hispanic ethnicity.

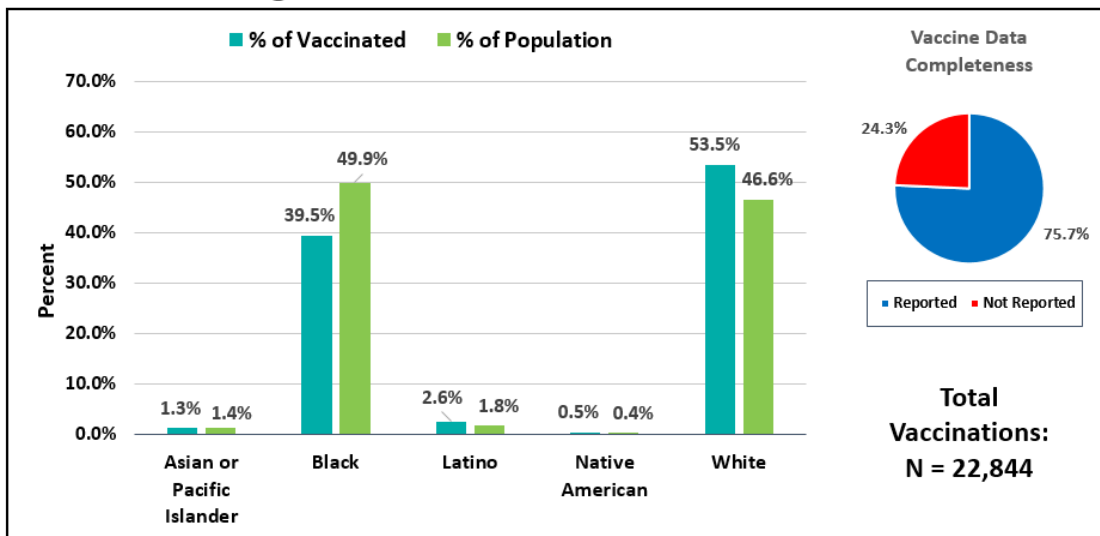
Vaccine Recipients vs. Population by Race/Ethnicity Percentages in Henrico – Dec 15, 2020 to June 7, 2021



- * For race/ethnicity of vaccine recipients, "Not Reported" comprises 37.5% (n=68,304).
- * Individuals identifying as "Other Race" account for 5,453 vaccinations.
- * Missing and Unknown Ethnicities were assumed to be of Non-Hispanic ethnicity.

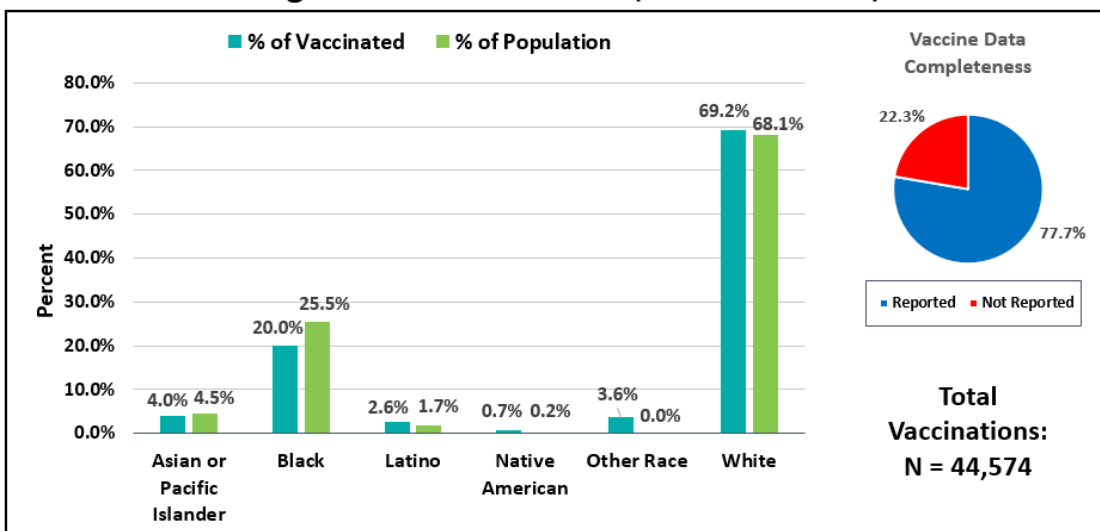
The figures below compare the percentage breakdown by race and ethnicity specifically for individuals 65 and over. In Richmond City, Black individuals comprise 49.9% of the population of those aged 65 years and older, yet make up only 39.5% of vaccine recipients. This discrepancy can also be noted in Henrico, where Black individuals make up 25.5% of the population, yet thus far have only comprised 20.0% of vaccine recipients.

Vaccine Recipients vs. Population 65 and Over by Race/Ethnicity Percentages in Richmond – Dec 15, 2020 to June 7, 2021



- * For race/ethnicity of vaccine recipients, "Not Reported" comprises 24.3% (n=6,155).
- * Individuals identifying as "Other Race" account for 429 vaccinations
- * Missing and Unknown Ethnicities were assumed to be of Non-Hispanic ethnicity.

Vaccine Recipients vs. Population 65 and Over by Race/Ethnicity Percentages in Henrico – Dec 15, 2020 to June 7, 2021



- * For race/ethnicity of vaccine recipients, "Not Reported" comprises 22.3% (n=11,026).
- * Individuals identifying as "Other Race" account for 1,210 vaccinations
- * Missing and Unknown Ethnicities were assumed to be of Non-Hispanic ethnicity.