

WEEKLY COVID-19 REPORT FOR EXTERNAL USE

MON JUNE 07 - MON JUNE 14, 2021

CONTENTS

KEY TAKEAWAYS	2
1.0 COVID-19 SNAP SHOT	3
1.1 CONFIRMED CASES, HOSPITALIZATIONS, FATALITIES, AND PROBABLE CASES BY COUNTY	3
1.2 CURRENT COVID-19 HOSPITALIZATIONS IN THE RICHMOND CATCHMENT AREA ON JUNE 14, 2021	4
2.0 COVID-19 TESTING ENCOUNTERS AND POSITIVITY	4
2.1 TESTING SUMMARY	4
3.0 COVID-19 CASES	5
3.1 SUMMARY OF CASES	5
3.2 CASE REPORTS TRENDS BY DATE (SOURCE-VDH WEBSITE)	5
3.3 CASES BY SEX BY COUNTY	7
3.4 CASES BY AGE GROUP BY COUNTY	8
3.5 CASES AND POPULATION PROPORTIONS BY RACE AND ETHNICITY BY COUNTY	9
4.0 COVID-19 HOSPITALIZATIONS	11
4.1 SUMMARY OF HOSPITALIZATIONS	11
4.2 HOSPITALIZATIONS (CONFIRMED AND PENDING) BY DAY IN THE RICHMOND CATCHMENT AREA AS OF JUNE 14, 2021	11
4.3 ICU HOSPITALIZATIONS (CONFIRMED AND PENDING) BY DAY IN THE RICHMOND CATCHMENT AREA AS OF JUNE 14, 2021	12
4.4 VENTILATOR UTILIZATIONS (PATIENTS ON VENTILATORS) BY DAY IN THE RICHMOND CATCHMENT AREA AS OF JUNE 14, 2021	12
5.0 COVID-19 FATALITIES	13
5.1 SUMMARY OF FATALITIES	13
6.0 VACCINATION	13
6.1 VACCINE SUMMARY	13
6.2 PERCENTAGE OF VACCINATION GOALS REACHED BY POPULATION	13
6.3 VACCINATIONS BY LOCALITY AS OF JUNE 14, 2021 - SOURCE: VDH.VIRGINIA.GOV	14
6.4 VACCINE DISTRIBUTION BY DEMOGRAPHIC SUBGROUP	15

KEY TAKEAWAYS

- According to the [VDH Pandemic Metrics Dashboard](#), in Richmond, there were **-0.4 new cases per 100,000 in the last week**, a decrease from last week. We are investigating what a negative case rate implies. Percent **positivity** for the locality is 1.6% and is still decreasing overall. In Henrico, there were **3.1 new cases per 100,000 in the last week**. Cases have been decreasing in Henrico for the last 61 days. Percent positivity for the locality is .7% and also decreasing.
- Cases in both districts continue to decline, with a 7-day average of 1 new cases per day, per 100,000 population in Richmond and 2 new cases per day, per 100,000 population in Henrico.
 - Due to recent changes in VEDSS that have impacted the date range of data available for analysis, we have had to limit the demographic analysis in this report to data from the last 4 weeks. Within this range, **females** comprise a higher proportion of cases and **20-29 year olds** continue to lead case counts in both districts. Regarding race and ethnicity, the highest proportion of cases is still among **Black individuals** in Richmond and now in Henrico as well.
- Based on data from the [VDH Dashboard](#), **hospitalizations** among Richmond residents are fluctuating with a 7-day average of about 1. Hospitalizations among Henrico residents are decreasing, with a 7-day average of 1 daily new hospitalization reported. Looking more broadly at health systems within the Richmond catchment area, hospitalizations, ICU hospitalizations, and ventilator utilizations are also decreasing. Recently, Hospitalizations have remained low and stable. ICU Hospitalizations have shown recent fluctuations but have overall stayed at a decreased level as compared to January of this year. Similarly, although generally low, ventilator numbers have shown recent mild upticks. Ten of the eleven hospitals in the Richmond catchment area are still operating at a normal clinical status. CJW Chippenham Hospital is operating at a full clinical status. *Hospitalizations by subgroup (sex, age, and race) are reported on a monthly basis.*
- Based on data from the [VDH Dashboard](#), **COVID-19 deaths** based on date of death in both districts are remaining relatively low and stable moving through the month of June, with one death in the last three weeks in Richmond City, and two deaths over the past three weeks in Henrico County. Please note that trends in death data are frequently impacted by a lag in reporting. *Deaths by subgroup (sex, age, and race) are reported on a monthly basis.*
- Richmond and Henrico Health Districts are in Phase 2 of vaccination. Anyone 12 or older is eligible to receive a vaccine. As of June 14, 53.3% of the region's population has received at least one dose of the vaccine and 44.5% of the region's population has been fully vaccinated. Approximately 51.7% of Richmond and Henrico's combined population has received at least one dose and 43.3% of the two districts combined population has been fully vaccinated. Local health departments currently appear to be administering the largest percentage of vaccines to Richmond and Henrico residents, compared with other providers.
 - The majority of vaccine recipients in both districts have been female. In both Richmond and Henrico, older age groups have consistently been vaccinated at a higher rate than younger age groups, with individuals in Richmond 65 and over, in Henrico 65 and over, and in Henrico between 50-64 all reaching the 70% goal for vaccinated percentage. Available data indicate that eligible White individuals have received the majority of the vaccine in both districts. Page 33 includes an estimated breakdown of vaccination uptake by race and age subgroups.

1.0 COVID-19 SNAP SHOT

1.1 CONFIRMED CASES, HOSPITALIZATIONS, FATALITIES, AND PROBABLE CASES BY COUNTY

CASE STATUS	RICHMOND CITY	HENRICO COUNTY	VIRGINIA
New cases this week (June 13)	5	15	981
All cases	17129	25569	677812
Confirmed cases	14092	18875	527559
Hospitalizations	803	1045	28642
Deaths	235	556	9553
Probable cases	3037	6694	150253
Hospitalizations	21	45	1540
Deaths	36	69	1765
Case rate per 100,000	7433.3	7729	7941.1

Weekly cases added are estimated as the difference between the cases recorded from the current and prior week

*Case Rate per 100,000=(confirmed+probable)/population count *100,000.*

Population estimates for the case rate are from 2019 data compiled by the National Center for Health Statistics (NCHS).

1.2 CURRENT COVID-19 HOSPITALIZATIONS IN THE RICHMOND CATCHMENT AREA ON JUNE 14, 2021

The data included in this section comes from VHASS and it includes data from the following hospitals: VCU Health System, Retreat Doctors', Bon Secours Community, CWJ Chippenham, CWJ Johnson Willis, VA Medical Center, Bon Secours St. Mary's, Henrico Doctors, and Parham Doctors, Bon Secours St. Francis, and Memorial Regional Medical Center.

	TOTAL IN USE FOR COVID-19	CURRENTLY AVAILABLE
Confirmed Hospitalizations	40	166
Pending Hospitalizations	11	
Confirmed - ICU	8	49
Pending - ICU	1	
Confirmed - Ventilators	5	295
Pending - Ventilators	0	

Within these 11 hospitals that comprise the Richmond catchment area, there are currently 166 total available hospital beds, 49 available adult ICU beds, and 295 available ventilators. Based on the VHASS hospital dashboard on June 14, 2021, 10 hospitals are operating at normal clinical status, and CJW Johnston Willis Hospital is operating at a full clinical status.*

**A clinical status of “normal” indicates that hospital clinical resources are operating within normal conditions. A clinical status of “full” indicates that hospital clinical resources are exceeded and acceptable care cannot be provided to additional patients. Diversion or Community surge response is required.

2.0 COVID-19 TESTING ENCOUNTERS AND POSITIVITY

2.1 TESTING SUMMARY

Total tests by testing modality and the associated 7-day average in percent positivity are summarized in the table below. Data are from the [VDH public dashboard](#) on June 13, 2021.

	RICHMOND CITY		HENRICO COUNTY	
	Tests	Positivity	Tests	Positivity
PCR*	256,729	1.6%	386,463	1.3%
Antigen	50,672	1.0%	101,488	2.0%
Total (PCR, antigen, and antibody)	311,927	1.8%	497,344	2.0%

*All testing metrics included in previous reports have been based on PCR tests

3.0 COVID-19 CASES

3.1 SUMMARY OF CASES

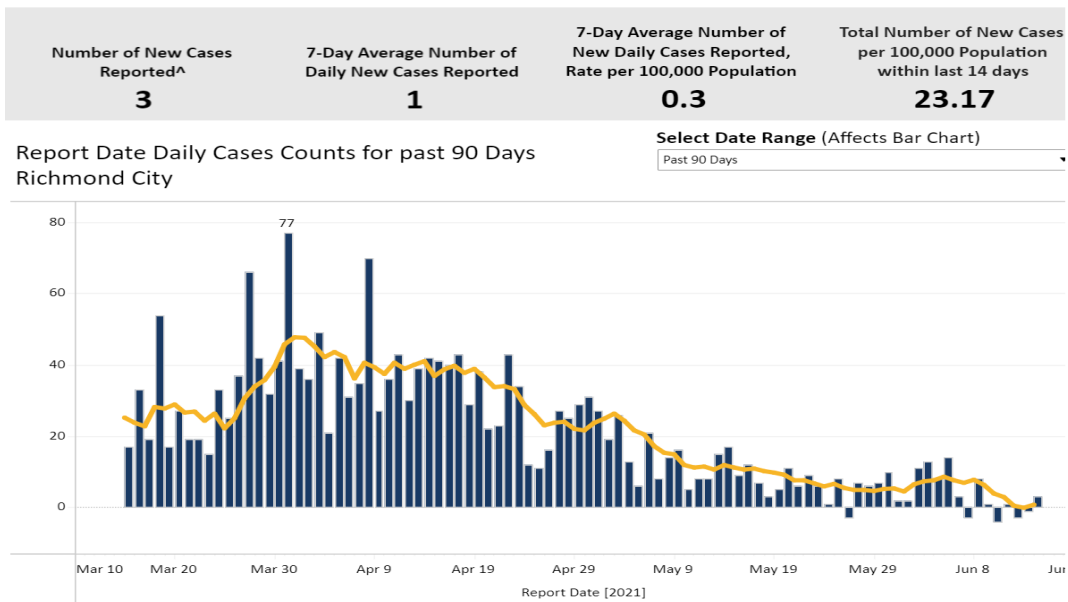
Cases

Cases in both districts continue to decline, with a 7-day average of 1 new cases per day, per 100,000 population in Richmond and 2 new cases per day, per 100,000 population in Henrico.

Case Demographics

Due to recent changes in VEDSS which have impacted the date range of data available for analysis, we have had to limit the demographic analysis in this report to data from the last 4 weeks. Within this range, females comprise a higher proportion of cases and 20-29 year olds continue to lead case counts in both districts. Regarding race and ethnicity, the highest proportion of cases is still among Black individuals in Richmond and now in Henrico as well.

3.2 CASE REPORTS TRENDS BY DATE (SOURCE-VDH WEBSITE)

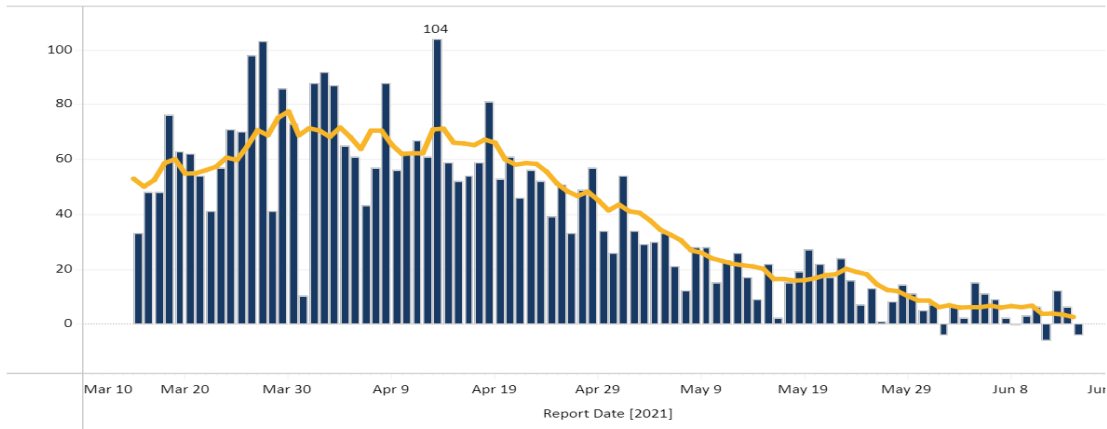


- In Richmond, the 7-day average number of daily new cases reported this week shows a continued decrease in overall case counts. 3 new cases were reported on June 14, 2021. The 7-day average of new daily cases is currently 0.3 per 100,000 population.

Number of New Cases Reported [^]	7-Day Average Number of Daily New Cases Reported	7-Day Average Number of New Daily Cases Reported, Rate per 100,000 Population	Total Number of New Cases per 100,000 Population within last 14 days
-4	2	0.7	17.62

Report Date Daily Cases Counts for past 90 Days
Henrico

Select Date Range (Affects Bar Chart)
Past 90 Days

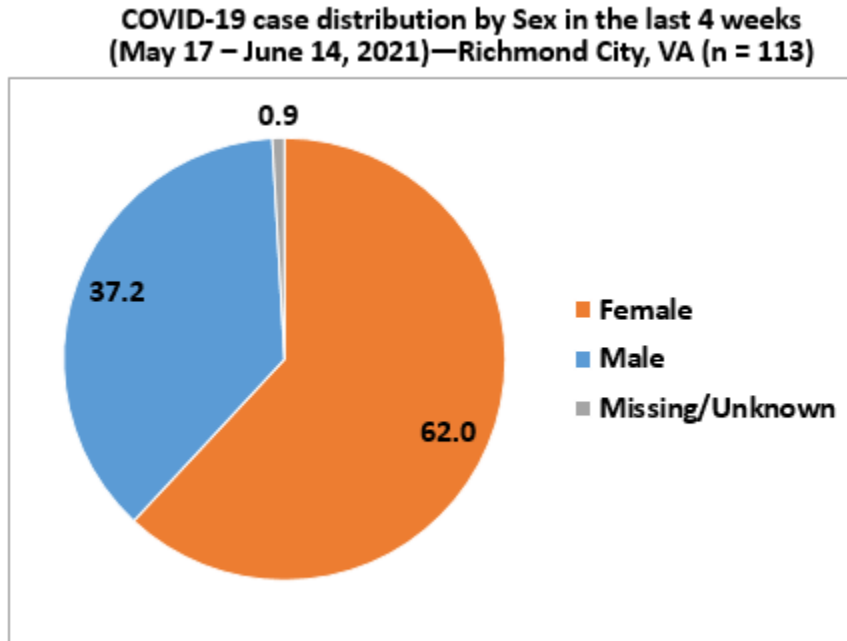


- In Henrico, the number of new cases reported per day is fluctuating, though still at a much lower count than in previous months. No new cases were reported on June 14, 2021. The 7-day average number of cases reported daily in Henrico County is 0.7 per 100,000 population.

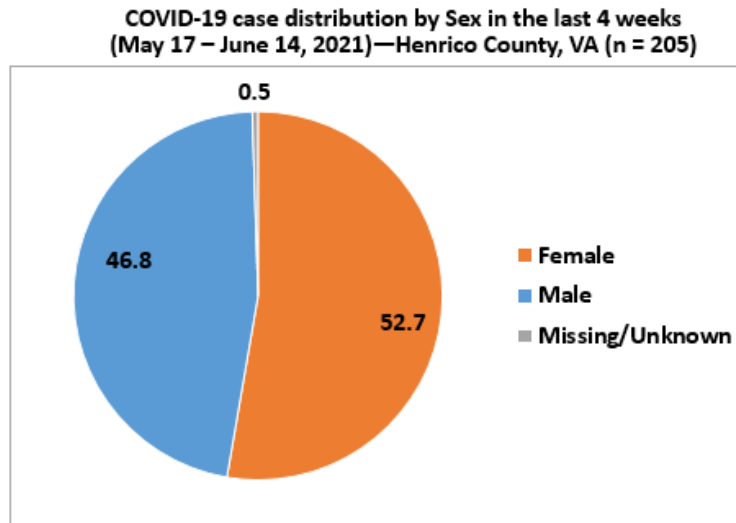
3.3 CASES BY SEX BY COUNTY

All percentages are based on overall case distribution, rather than the proportion of known cases for each measure, and therefore may not correspond directly with VDH percentages.

Recent changes in VEDSS have impacted the date range of data available for analysis. The charts below show data from the last 4 weeks. We hope to be able to show cumulative data in future reports.



- In Richmond, over the last four weeks, females have comprised a majority of cases (62.0%) when compared to males (37.2%). Sex data has been Missing/Unknown for 0.9% of cases over the last four weeks.

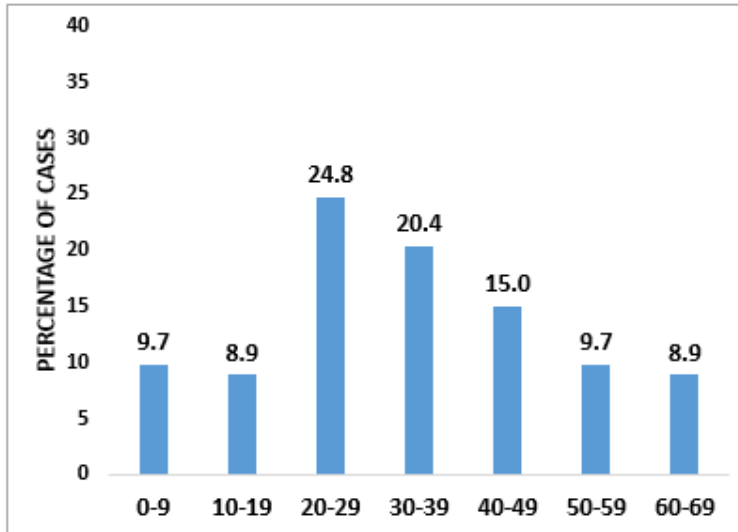


- In Henrico, over the last four weeks, females have comprised 52.7% of cases, whereas males have comprised 46.8% of cases. Sex data for .5% of cases over the last four weeks is unknown.

3.4 CASES BY AGE GROUP BY COUNTY

Recent changes in VEDSS have impacted the date range of data available for analysis. The charts below show data from the last 4 weeks. We hope to be able to show cumulative data in future reports.

**COVID-19 case distribution by Age group in the last 4 weeks
(May 17 – June 14, 2021)—Richmond City, VA (n = 113)**

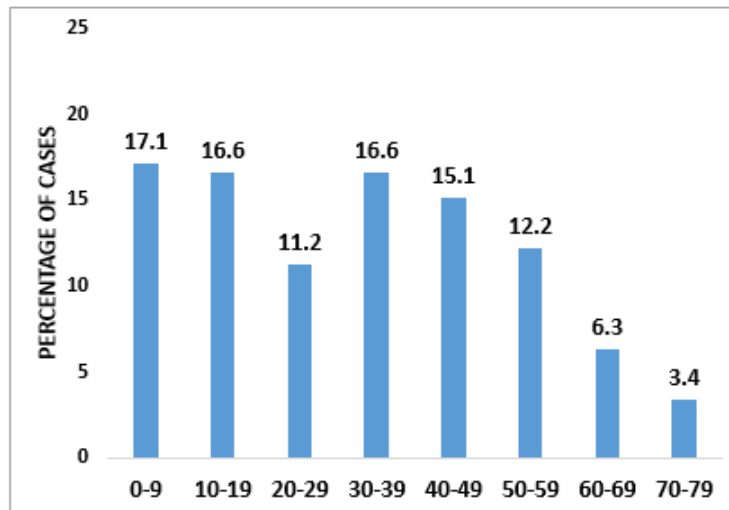


Age is missing for 1.7% (n=2) cases

* Cases for individuals aged 70-79 and 80+ are suppressed (counts < 5)

- In Richmond City, individuals aged 20-29 still comprise the highest number of cases in the last four weeks (24.8%) , followed by individuals aged 30-39 years (20.4%).

**COVID-19 case distribution by Age group in the last 4 weeks
(May 17 – June 14, 2021)—Henrico County, VA (n = 205)**



Age is missing for 0.5% (n=1) cases

* Cases among individuals aged 80+ are suppressed (counts < 5)

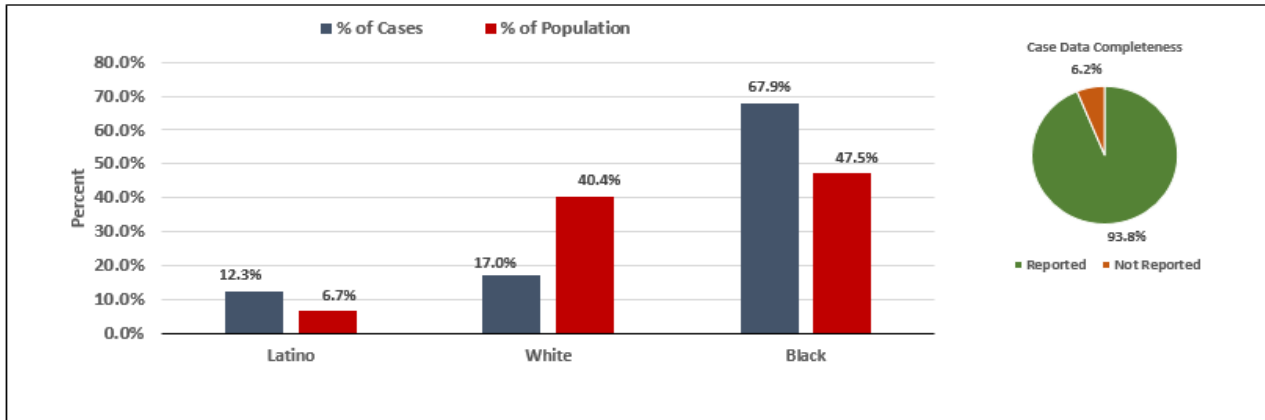
- In Henrico, individuals aged 0-9 comprise the highest percentage of cases (17.1%) followed closely by individuals aged 20-29 and 30-39 (16.6%) over the last four weeks.

3.5 CASES AND POPULATION PROPORTIONS BY RACE AND ETHNICITY BY COUNTY

Population estimates for the Race and Ethnicity subgroup analyses are based on 2019 5-Year estimates from the American Community Survey by the U.S. Census Bureau.

Recent changes in VEDSS have impacted the date range of data available for analysis. The charts below show data from the last 4 weeks. We hope to be able to show cumulative data in future reports.

**COVID-19 case distribution by Race and Ethnicity in the last 4 weeks
(May 17 – June 14, 2021) – Richmond City, VA (n = 113)**



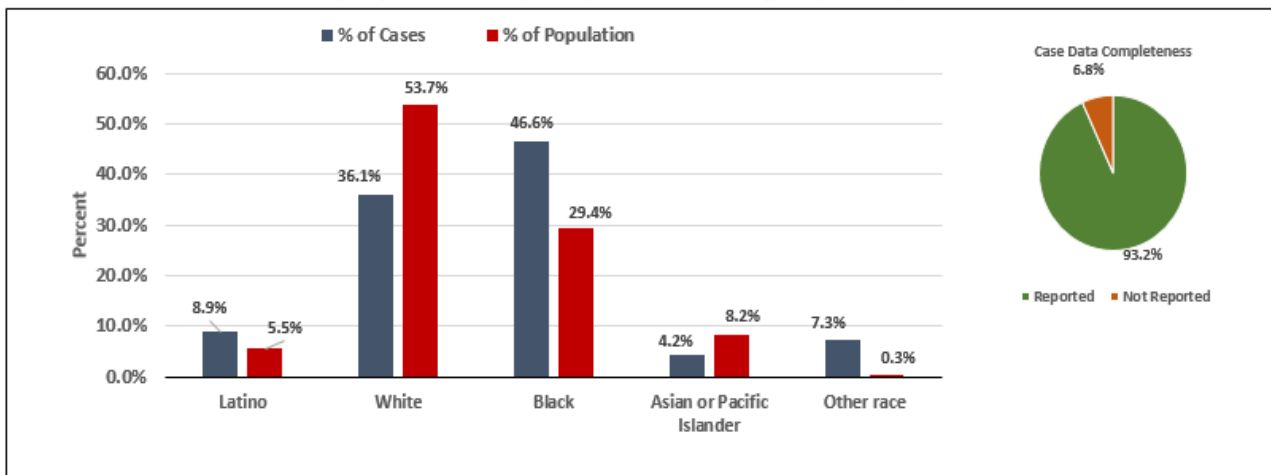
*For race/ethnicity identification among cases, "Not Reported" comprises 6.2% (n=7).

*Missing and Unknown Ethnicities were assumed to be of Non-Hispanic ethnicity

**Cases among Native Americans, Asian or Other Pacific Islanders, and individuals belonging to Two or More Races, and Other Race groups are suppressed (counts < 5)

- In Richmond, the case burden for Black individuals over the last 4 weeks (67.9%) is disproportionately high relative to their population percentage (47.5%), while the case burden for White individuals is disproportionately low (17.0%) relative to their population percentage (40.4%).

**COVID-19 case distribution by Race and Ethnicity in the last 4 weeks
(May 17 – June 14, 2021) – Henrico County, VA (n =205)**



*For race/ethnicity identification among cases, "Not Reported" comprises 6.8% (n=14). *Missing and Unknown Ethnicities were assumed to be of Non-Hispanic ethnicity

*Cases among Native Americans and individuals belonging to Two or More Races are suppressed (counts < 5)

- In Henrico, the case burden for Black individuals over the last 4 weeks (46.6%) is disproportionately high relative to their population percentage (29.4%). The case burden for White individuals has been disproportionately low over the last four weeks (36.1%) relative to their population percentage (53.7%). The case burden over the past four weeks for Latino individuals (8.9%) has been disproportionately high as compared to their population percentage (5.5%).

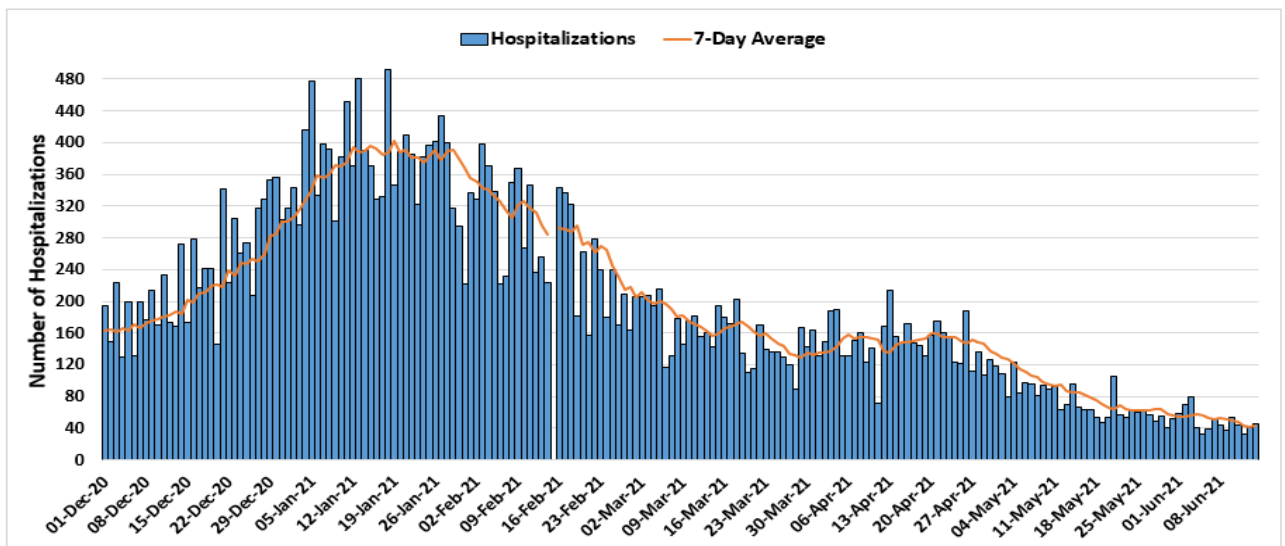
4.0 COVID-19 HOSPITALIZATIONS

4.1 SUMMARY OF HOSPITALIZATIONS

Hospitalizations among Richmond residents are fluctuating with a 7-day average of about 1. Hospitalizations among Henrico residents are decreasing, with a 7-day average of 1 daily new hospitalization reported. Looking more broadly at health systems within the Richmond catchment area, hospitalizations, ICU hospitalizations, and ventilator utilizations are also decreasing. Recently, Hospitalizations have remained low and stable. ICU Hospitalizations have shown recent fluctuations but have overall stayed at a decreased level as compared to January of this year. Similarly, although generally low, ventilator numbers have shown recent mild upticks. Ten of the eleven hospitals in the Richmond catchment area are still operating at a normal clinical status. CJW Chippenham Hospital is operating at a full clinical status. *Hospitalizations by subgroup (sex, age, and race) are reported on a monthly basis.*

4.2 HOSPITALIZATIONS (CONFIRMED AND PENDING) BY DAY IN THE RICHMOND CATCHMENT AREA AS OF JUNE 14, 2021

Total Daily COVID-19 Hospitalizations, December 1st, 2020 – June 14th, 2021
Richmond Catchment Area (38435 of 75453)



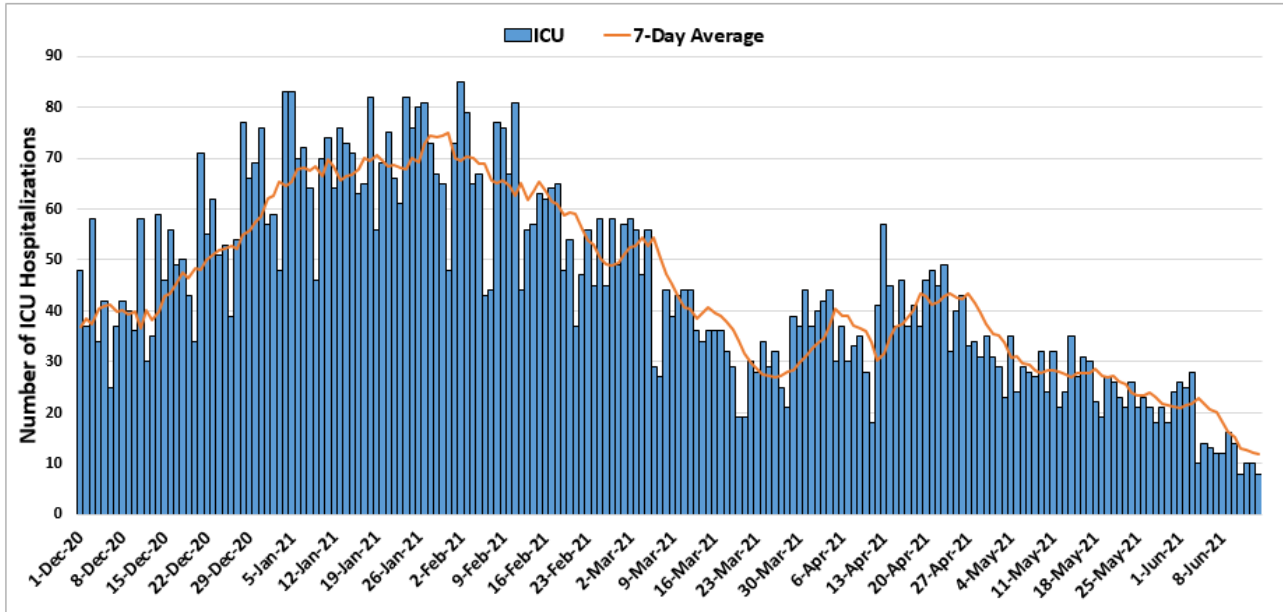
* Data points from March until November 30th are excluded to allow for clarity in trends/patterns

* Data points from February 15th, 2021 were omitted due to issues with data quality

- Following a peak in Hospitalizations January of 2021, Hospitalizations in the Richmond Catchment area showed a dramatic decrease through early March, a plateau lasting until late April, and an overall decrease thereafter leading into early June. Despite two upticks, data from the month of June suggests low and stable hospitalizations in the Richmond catchment area.
- *Note: Data from February 15th, 2021 showed an erroneously high value and was subsequently omitted from the analysis. Steps are being taken to restore the quality of this data.*

4.3 ICU HOSPITALIZATIONS (CONFIRMED AND PENDING) BY DAY IN THE RICHMOND CATCHMENT AREA AS OF JUNE 14, 2021

Total Daily COVID-19 ICU Hospitalizations, December 1st, 2020 – June 14th, 2021
Richmond Catchment Area (8605 of 18349)

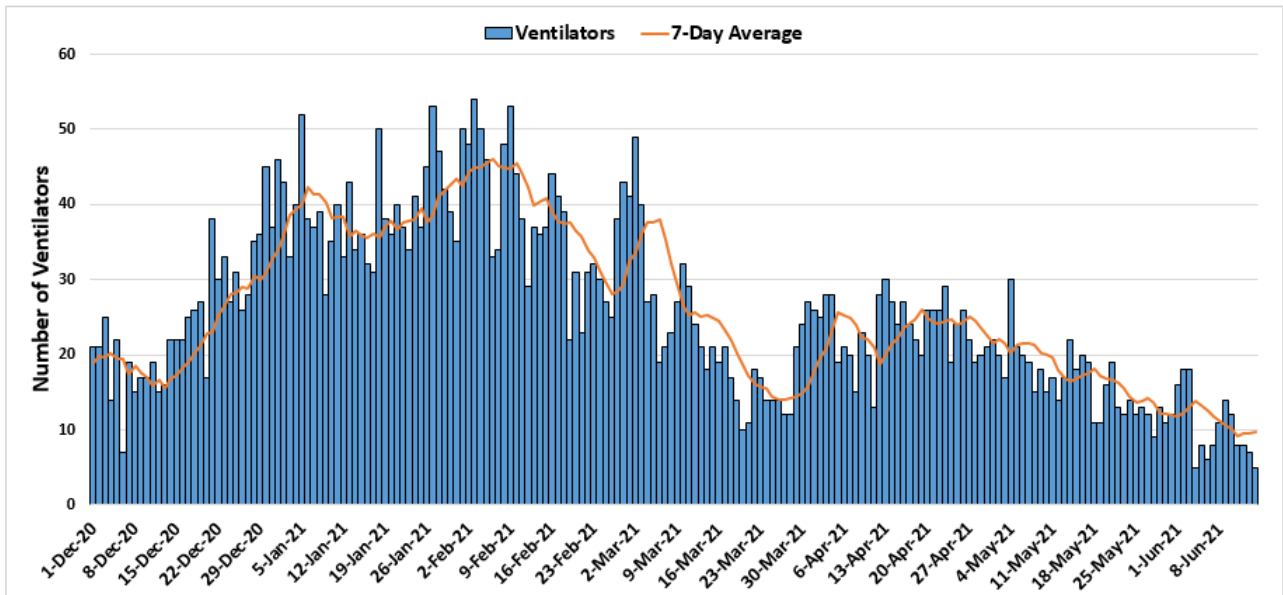


* Data points from March until November 30th are excluded to allow for clarity in trends/patterns

- Following a recent increase from late March through the middle of April, ICU hospitalizations showed a moderate decrease from mid April to mid May, and have largely decreased throughout the first two weeks of June, despite a brief uptick during the last week in May.

4.4 VENTILATOR UTILIZATIONS (PATIENTS ON VENTILATORS) BY DAY IN THE RICHMOND CATCHMENT AREA AS OF JUNE 14, 2021

Total Daily COVID-19 Ventilator Utilizations, December 1st, 2020 – June 14th, 2021
Richmond Catchment Area (5061 of 10204)



* Data points from March until November 30th are excluded to allow for clarity in trends/patterns

- Following a fluctuating plateau throughout late March until late April, Ventilator utilizations in the Richmond Catchment area are following a downward trend heading into mid June, despite brief upticks in mid May and the first week of June.

5.0 COVID-19 FATALITIES

5.1 SUMMARY OF FATALITIES

Deaths based on date of death in both districts are remaining relatively low and stable moving through the month of June, with one death in the last three weeks in Richmond City, and two deaths over the past three weeks in Henrico County. Please note that trends in death data are frequently impacted by a lag in reporting. *Deaths by subgroup (sex, age, and race) are reported on a monthly basis.*

6.0 VACCINATION

6.1 VACCINE SUMMARY

Richmond and Henrico Health Districts are in Phase 2 of vaccination. Anyone 12 or older is eligible to receive a vaccine. As of June 14, 53.3% of the region’s population has received at least one dose of the vaccine and 44.5% of the region’s population has been fully vaccinated. Approximately 51.7% of Richmond and Henrico’s combined population has received at least one dose and 43.3% of the two districts combined population has been fully vaccinated. Local health departments currently appear to be administering the largest percentage of vaccines to Richmond and Henrico residents, compared with other providers.

The majority of vaccine recipients in both districts have been female. In both Richmond and Henrico, older age groups have consistently been vaccinated at a higher rate than younger age groups, with individuals in Richmond 65 and over, in Henrico 65 and over, and in Henrico between 50-64 all reaching the 70% goal for vaccinated percentage. Available data indicate that eligible White individuals have received the majority of the vaccine in both districts.

6.2 PERCENTAGE OF VACCINATION GOALS REACHED BY POPULATION

		POPULATION	POPULATION GOAL (70%)	PEOPLE WITH AT LEAST ONE DOSE	PEOPLE FULLY VACCINATED
Richmond	12-17	11,150	7,805	3,178 (28.5%)	1,835 (16.4%)
	18+	190,750	133,525	100,778 (52.8%)	86,005 (45.1%)
	65+	31,809	22,266	23,374 (73.5%)	20,622 (64.8%)
Henrico	12-17	25,954	18,168	11,298 (43.5%)	6,214 (23.9%)
	18+	256,660	179,662	175,362 (68.3%)	150,323 (58.6%)
	65+	52,720	36,904	45,539 (86.4%)	40,739 (77.3%)

Population totals are based on 2019 data from the National Center for Health Statistics (NCHS). Please note - this is a change from previous reports which used Census data to estimate population by age group.

Nationally, the Biden administration is using the **percentage of adults (individuals 18 and over)** to track progress in vaccination.

Though the percentage of the population needed to reach herd immunity is still uncertain, in line with federal guidance, we have set an overall goal of vaccinating 70% of the population. First and second doses of the Pfizer vaccine must be administered at least 21 days apart. First and second doses of the Moderna vaccine must be administered at least 28 days apart. People who received the Johnson & Johnson vaccine, which is a single dose, are included in the count of first doses administered.

6.3 VACCINATIONS BY LOCALITY AS OF JUNE 14, 2021 - SOURCE: VDH.VIRGINIA.GOV

HEALTH DISTRICT	LOCALITY	TOTAL POPULATION	FIRST DOSES ADMINISTERED	SECOND DOSES ADMINISTERED
Chesterfield	Chesterfield	352,802	186,267	150,167
	Colonial Heights	17,370	7,774	6,329
	Powhatan	29,652	13,946	11,857
Chickahominy	Charles City	6,963	3,538	3,218
	Goochland	23,753	14,822	13,151
	Hanover	107,766	61,226	53,906
	New Kent	23,091	11,031	9,709
Henrico	Henrico	330,818	186,446	155,708
Richmond	Richmond City	230,436	103,823	87,304
Total		1,105,281	588,873	491,349

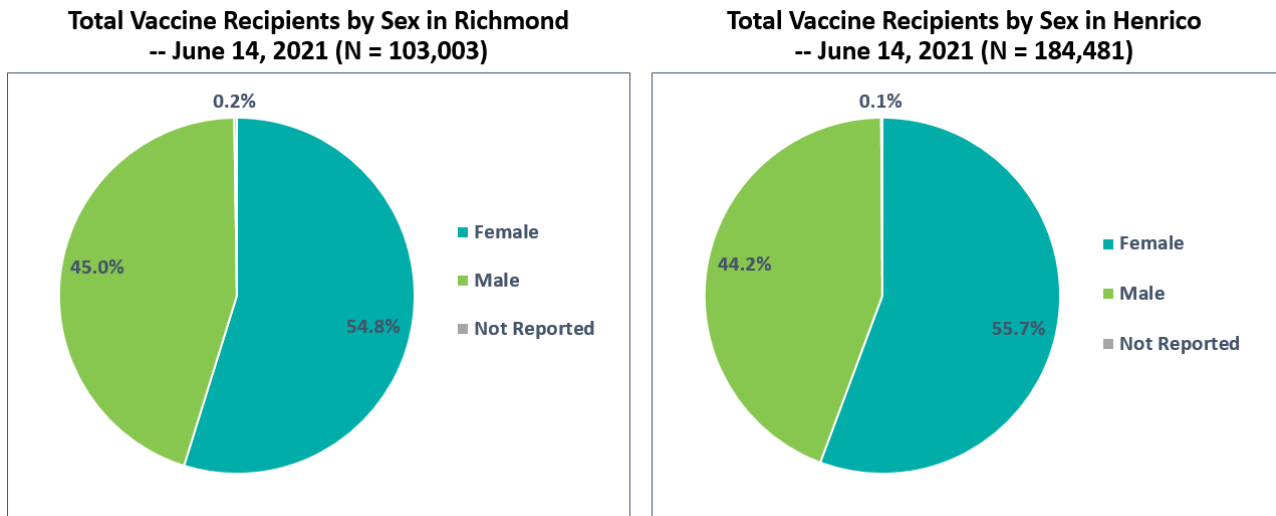
Population totals are based on 2019 data from the National Center for Health Statistics (NCHS). Please note - this is a change from previous reports which used Census data to estimate population by age group.

We have set a goal of vaccinating 75% of the population to reach herd immunity. First and second doses of the Pfizer vaccine must be administered at least 21 days apart. First and second doses of the Moderna vaccine must be administered at least 28 days apart. People who received the Johnson & Johnson vaccine, which is a single dose, are included in the count of first doses administered.

6.4 VACCINE DISTRIBUTION BY DEMOGRAPHIC SUBGROUP

UPDATE: Population estimates for age subgroups and for race and ethnicity subgroups have been changed for this report from the U.S. Census Bureau's American Community Survey (ACS) 2019 5-year estimates to the National Center for Health Statistics (NCHS) 2019 estimates to align with estimates used by other VDH metrics. This change also involves new race and ethnicity categories: Latino or Hispanic, Non-Hispanic White, Black or African-American, Asian or Pacific Islander, and Native American. Racial groups such as Two or more Races and Other Race have been excluded from the following metrics as they are without corresponding NCHS estimates, but the counts for these groups can be seen in the footnotes immediately below.

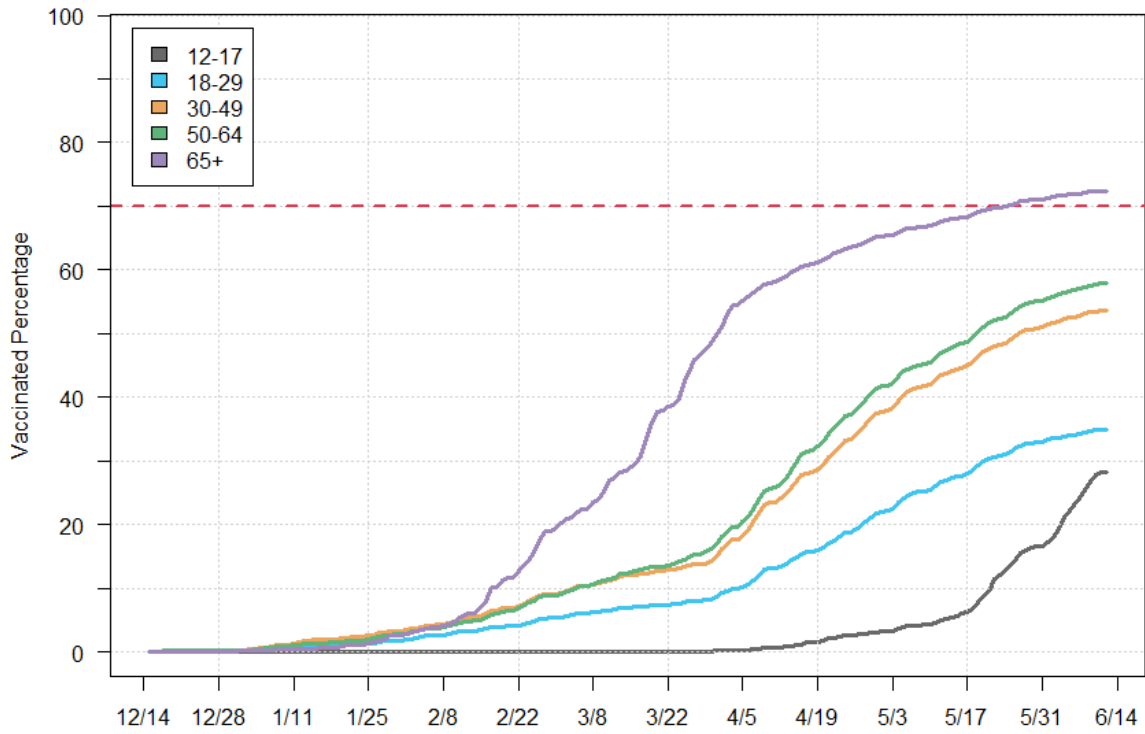
In both Richmond and Henrico, a majority of vaccinated individuals have been female.



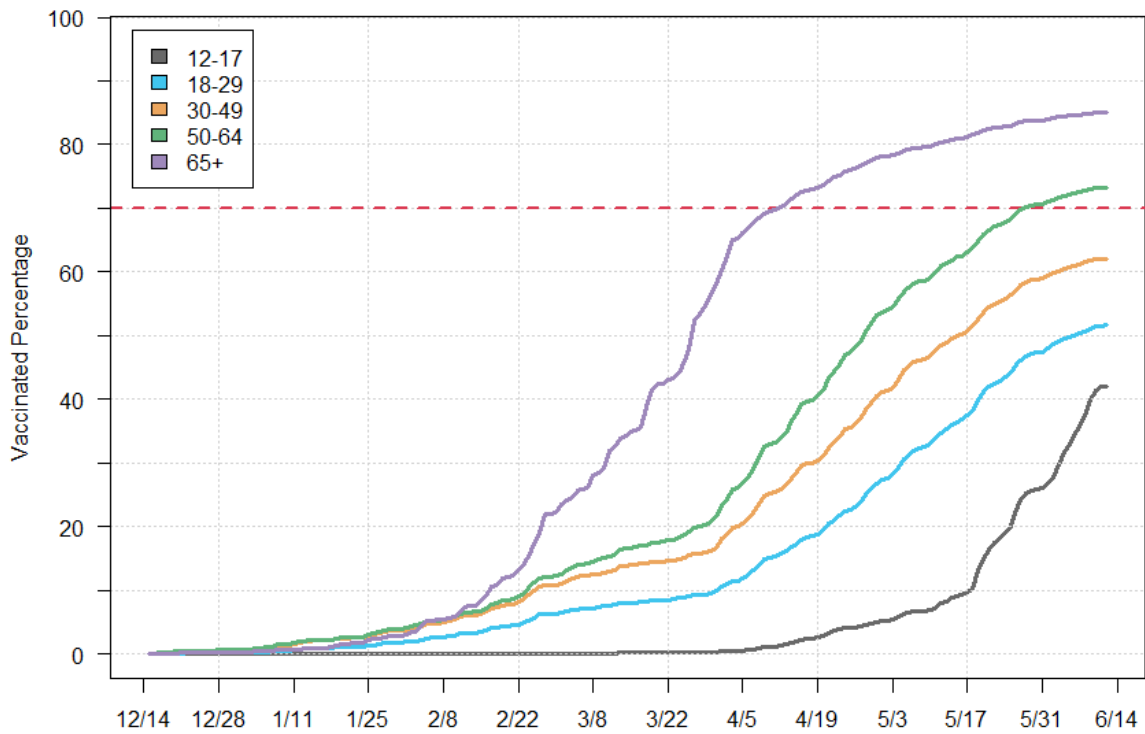
The following charts track vaccination rates by age group over time since vaccinations first began in mid-December. In both Richmond and Henrico, we can see a steep increase in vaccination rates in February and early March for individuals 65 and over such that over 70% of this age group is now vaccinated but new vaccinations are rising slowly. Individuals aged 18 to 29, 30 to 49, and 50 to 64 in Richmond saw sharp increases in vaccination rates in mid-March through April, with a steady but slower increase in vaccinations from May through mid-June. These same age groups in Henrico saw a similar pattern, but the dropoff to a slower increase did not occur until later May. Among individuals aged 12 to 17, vaccination rates increased at a slow pace until vaccine opportunities opened up to the general population and then individuals aged 12 to 15 were able to get vaccinated, at which point we have seen a sharp increase in vaccination rates that has not yet noticeably slowed.

Individuals in Henrico have seen consistently higher vaccination rates across all age groups as compared to Richmond. Individuals in Henrico 65 and over reached the 70% vaccinated threshold in late March while individuals in Richmond 65 and over did not reach this threshold until early May. In addition, individuals in Henrico between 50 and 64 reached this threshold in mid-May, while the same age group in Richmond is still well short of this goal.

Vaccinated Percentage over Time by Age Group - Richmond

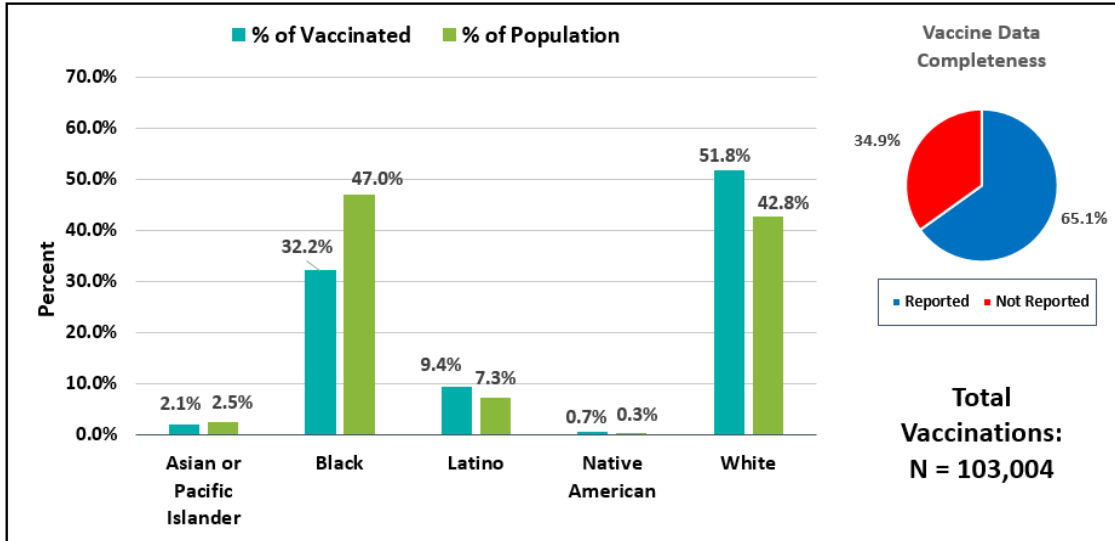


Vaccinated Percentage over Time by Age Group - Henrico



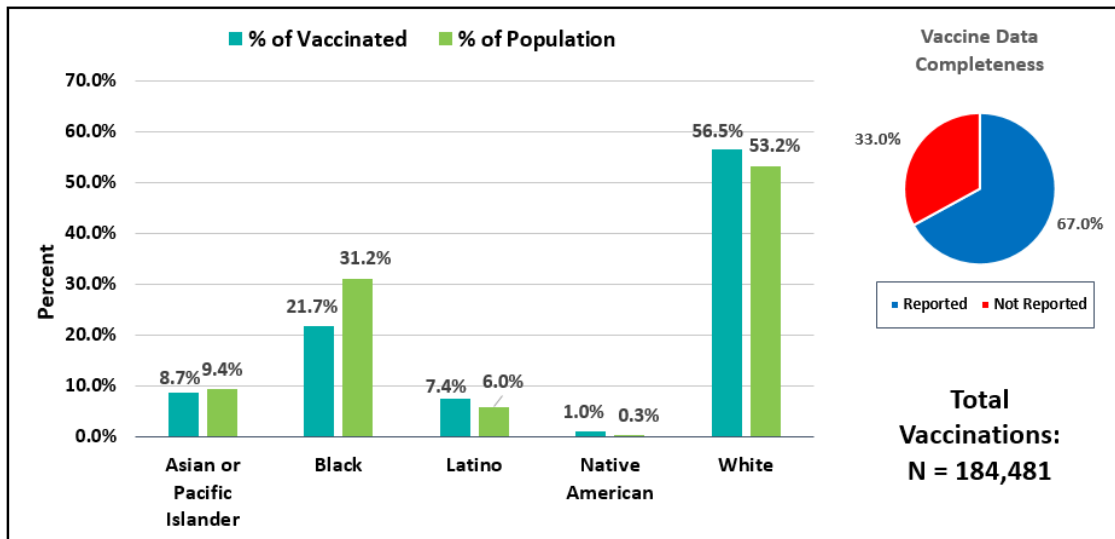
The following charts compare the percentage breakdown of racial or ethnic identification of vaccinated individuals to the expected percentage breakdown of the racial or ethnic identification of the population. A notable discrepancy can be seen when looking at Black individuals, who comprise 47.0% of the Richmond population and 31.2% of the Henrico population yet only 32.2% of vaccine recipients in Richmond and 21.7% of vaccine recipients in Henrico.

Vaccine Recipients vs. Population by Race/Ethnicity Percentages in Richmond – Dec 15, 2020 to June 14, 2021



- * For race/ethnicity of vaccine recipients, "Not Reported" comprises 34.9% (n=35,928).
- * Individuals identifying as "Other Race" account for 2,558 vaccinations.
- * Missing and Unknown Ethnicities were assumed to be of Non-Hispanic ethnicity.

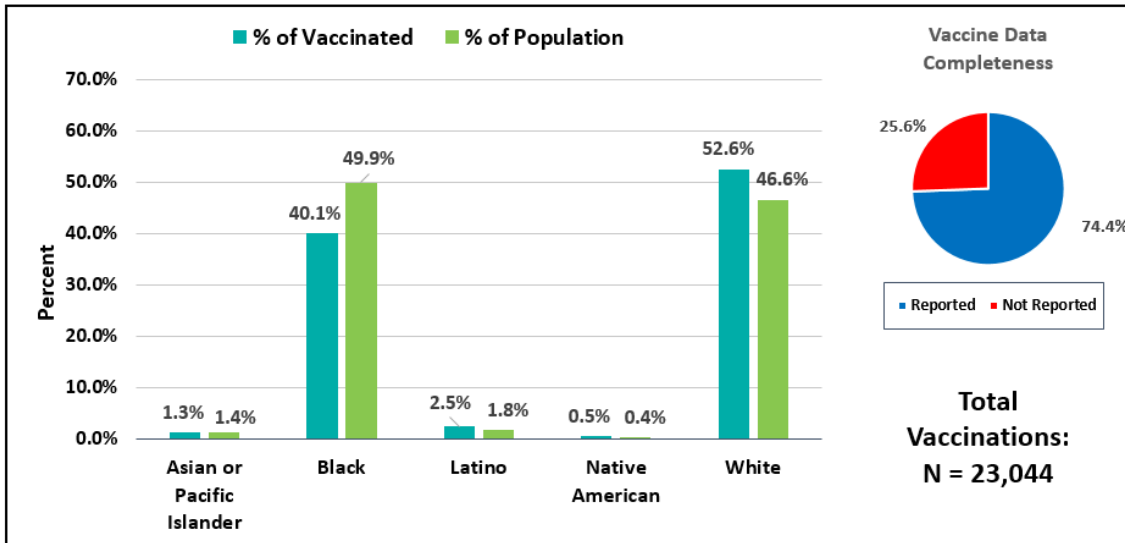
Vaccine Recipients vs. Population by Race/Ethnicity Percentages in Henrico – Dec 15, 2020 to June 14, 2021



- * For race/ethnicity of vaccine recipients, "Not Reported" comprises 33.0% (n=60,843).
- * Individuals identifying as "Other Race" account for 5,743 vaccinations.
- * Missing and Unknown Ethnicities were assumed to be of Non-Hispanic ethnicity.

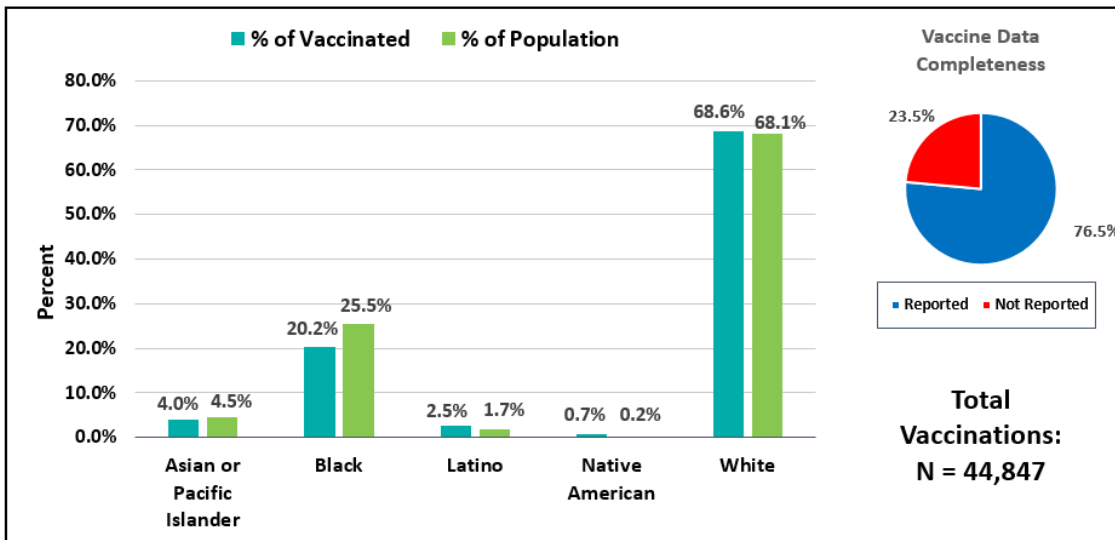
The figures below compare the percentage breakdown by race and ethnicity specifically for individuals 65 and over. In Richmond City, Black individuals comprise 49.9% of the population of those aged 65 years and older, yet make up only 40.1% of vaccine recipients. This discrepancy can also be noted in Henrico, where Black individuals make up 25.5% of the population, yet thus far have only comprised 20.2% of vaccine recipients.

Vaccine Recipients vs. Population 65 and Over by Race/Ethnicity Percentages in Richmond – Dec 15, 2020 to June 14, 2021



- * For race/ethnicity of vaccine recipients, "Not Reported" comprises 25.6% (n=5,898).
- * Individuals identifying as "Other Race" account for 506 vaccinations.
- * Missing and Unknown Ethnicities were assumed to be of Non-Hispanic ethnicity.

Vaccine Recipients vs. Population 65 and Over by Race/Ethnicity Percentages in Henrico – Dec 15, 2020 to June 14, 2021



- * For race/ethnicity of vaccine recipients, "Not Reported" comprises 23.5% (n=10,560) of vaccinations.
- * Individuals identifying as "Other Race" account for 1,368 vaccinations.
- * Missing and Unknown Ethnicities were assumed to be of Non-Hispanic ethnicity.