

# WEEKLY COVID-19 REPORT FOR EXTERNAL USE

MON JUNE 14 - MON JUNE 21, 2021

## CONTENTS

<b>KEY TAKEAWAYS</b>	<b>2</b>
<b>1.0 COVID-19 SNAP SHOT</b>	<b>3</b>
1.1 CONFIRMED CASES, HOSPITALIZATIONS, FATALITIES, AND PROBABLE CASES BY COUNTY	3
1.2 CURRENT COVID-19 HOSPITALIZATIONS IN THE RICHMOND CATCHMENT AREA ON JUNE 14, 2021	4
<b>2.0 COVID-19 TESTING ENCOUNTERS AND POSITIVITY</b>	<b>4</b>
2.1 TESTING SUMMARY	4
<b>3.0 COVID-19 CASES</b>	<b>5</b>
3.1 SUMMARY OF CASES	5
3.2 CASE REPORTS TRENDS BY DATE (SOURCE-VDH WEBSITE)	5
3.3 CASES BY SEX BY COUNTY	7
3.4 CASES BY AGE GROUP BY COUNTY	8
3.5 CASES AND POPULATION PROPORTIONS BY RACE AND ETHNICITY BY COUNTY	9
<b>4.0 COVID-19 HOSPITALIZATIONS</b>	<b>11</b>
4.1 SUMMARY OF HOSPITALIZATIONS	11
4.2 HOSPITALIZATIONS (CONFIRMED AND PENDING) BY DAY IN THE RICHMOND CATCHMENT AREA AS OF JUNE 21, 2021	11
4.3 ICU HOSPITALIZATIONS (CONFIRMED AND PENDING) BY DAY IN THE RICHMOND CATCHMENT AREA AS OF JUNE 21, 2021	12
4.4 VENTILATOR UTILIZATIONS (PATIENTS ON VENTILATORS) BY DAY IN THE RICHMOND CATCHMENT AREA AS OF JUNE 21, 2021	12
<b>5.0 COVID-19 FATALITIES</b>	<b>13</b>
5.1 SUMMARY OF FATALITIES	13
<b>6.0 VACCINATION</b>	<b>13</b>
6.1 VACCINE SUMMARY	13
6.2 PERCENTAGE OF VACCINATION GOALS REACHED BY POPULATION	13
6.3 VACCINATIONS BY LOCALITY AS OF JUNE 21, 2021 - SOURCE: VDH.VIRGINIA.GOV	14
6.4 VACCINE DISTRIBUTION BY DEMOGRAPHIC SUBGROUP	15

## KEY TAKEAWAYS

- According to the VDH Pandemic Metrics Dashboard, in Richmond, there were 2.6 new cases per 100,000 in the last week. The trend in case rates in Richmond for the past 75 days has been negative and is considered decreasing. Percent positivity for the locality is 1.5% and is also decreasing. In Henrico, there were 25.2 new cases per 100,000 in the last week. The case rate is considered fluctuating and the trend for the past 12 days has been increasing. Percent positivity for the locality is 0.8% and its trend has been decreasing for 73 days.
- Cases in both districts continue to decline, with a 7-day average of 3 new cases per day, per 100,000 population in Richmond and 5 new cases per day, per 100,000 population in Henrico.
  - Due to recent changes in VEDSS that have impacted the date range of data available for analysis, we have had to limit the demographic analysis in this report to data from the last 4 weeks. Within this range, **females** comprise a higher proportion of cases and **20-29 year olds** continue to lead case counts in both districts. Regarding race and ethnicity, the highest proportion of cases is still among **Black individuals** in Richmond and now in Henrico as well.
- Based on data from the [VDH Dashboard](#), **hospitalizations** among Richmond residents are fluctuating with a 7-day average of about 1. Hospitalizations among Henrico residents are decreasing, with a 7-day average of 1 daily new hospitalization reported. Looking more broadly at health systems within the Richmond catchment area, hospitalizations, ICU hospitalizations, and ventilator utilizations are also decreasing. Recently, Hospitalizations have remained low and stable. ICU Hospitalizations and ventilator utilizations have shown recent fluctuations but have overall stayed at a decreased level as compared to January of this year. Ten of the eleven hospitals in the Richmond catchment area are still operating at a normal clinical status. CJW Chippenham Hospital is operating at a full clinical status. *Hospitalizations by subgroup (sex, age, and race) are reported on a monthly basis. Hospitalizations by subgroup (sex, age, and race) are reported on a monthly basis.*
- Based on data from the [VDH Dashboard](#), **COVID-19 deaths** based on date of death in both districts are remaining relatively low and stable moving through the third week of June, with zero deaths reported in Richmond City and five deaths reported in Henrico County since the start of the month. Please note that trends in death data are frequently impacted by a lag in reporting. *Deaths by subgroup (sex, age, and race) are reported on a monthly basis.*
- Richmond and Henrico Health Districts are in Phase 2 of vaccination. Anyone 12 or older is eligible to receive a vaccine. As of June 21, 53.3% of the region's population has received at least one dose of the vaccine and 45.9% of the region's population has been fully vaccinated. Approximately 52.5% of Richmond and Henrico's combined population has received at least one dose and 45.0% of the two districts combined population has been fully vaccinated. Local health departments currently appear to be administering the largest percentage of vaccines to Richmond and Henrico residents, compared with other providers.
  - The majority of vaccine recipients in both districts have been female. In both Richmond and Henrico, older age groups have consistently been vaccinated at a higher rate than younger age groups, with individuals in Richmond 65 and over, in Henrico 65 and over, and in Henrico between 50-64 all reaching the 70% goal for vaccinated percentage. Available data indicate that eligible White individuals have received the majority of the vaccine in both districts. Page 33 includes an estimated breakdown of vaccination uptake by race and age subgroups.

## 1.0 COVID-19 SNAP SHOT

### 1.1 CONFIRMED CASES, HOSPITALIZATIONS, FATALITIES, AND PROBABLE CASES BY COUNTY

CASE STATUS	RICHMOND CITY	HENRICO COUNTY	VIRGINIA
New cases this week (June 20)	7	89	953
All cases	17136	25658	678765
Confirmed cases	14111	18921	528373
Hospitalizations	806	1057	28779
Deaths	236	562	9590
Probable cases	3025	6737	150392
Hospitalizations	21	46	1552
Deaths	36	70	1770
Case rate per 100,000	7436.3	7755.9	7952.2

*Weekly cases added are estimated as the difference between the cases recorded from the current and prior week*

*Case Rate per 100,000=(confirmed+probable)/population count \*100,000.*

*Population estimates for the case rate are from 2019 data compiled by the National Center for Health Statistics (NCHS).*

**1.2 CURRENT COVID-19 HOSPITALIZATIONS IN THE RICHMOND CATCHMENT AREA ON JUNE 21, 2021**

The data included in this section comes from VHASS and it includes data from the following hospitals: VCU Health System, Retreat Doctors', Bon Secours Community, CWJ Chippenham, CWJ Johnson Willis, VA Medical Center, Bon Secours St. Mary's, Henrico Doctors, and Parham Doctors, Bon Secours St. Francis, and Memorial Regional Medical Center.

	TOTAL IN USE FOR COVID-19	CURRENTLY AVAILABLE
Confirmed Hospitalizations	27	185
Pending Hospitalizations	5	
Confirmed - ICU	11	50
Pending - ICU	1	
Confirmed - Ventilators	5	294
Pending - Ventilators	0	

Within these 11 hospitals that comprise the Richmond catchment area, there are currently 185 total available hospital beds, 50 available adult ICU beds, and 294 available ventilators. Based on the VHASS hospital dashboard on June 21, 2021, 10 hospitals are operating at normal clinical status, and CJW Johnston Willis Hospital is operating at a full clinical status.\*

\*\*A clinical status of “normal” indicates that hospital clinical resources are operating within normal conditions. A clinical status of “full” indicates that hospital clinical resources are exceeded and acceptable care cannot be provided to additional patients. Diversion or Community surge response is required.

**2.0 COVID-19 TESTING ENCOUNTERS AND POSITIVITY**

**2.1 TESTING SUMMARY**

Total tests by testing modality and the associated 7-day average in percent positivity are summarized in the table below. Data are from the [VDH public dashboard](#) on June 21, 2021.

	RICHMOND CITY		HENRICO COUNTY	
	Tests	Positivity	Tests	Positivity
PCR*	258,509	1.5%	390,133	0.8%
Antigen	51,456	2.4%	102,988	1.4%
Total (PCR, antigen, and antibody)	314,522	2.6%	502,581	2.0%

\*All testing metrics included in previous reports have been based on PCR tests

### 3.0 COVID-19 CASES

#### 3.1 SUMMARY OF CASES

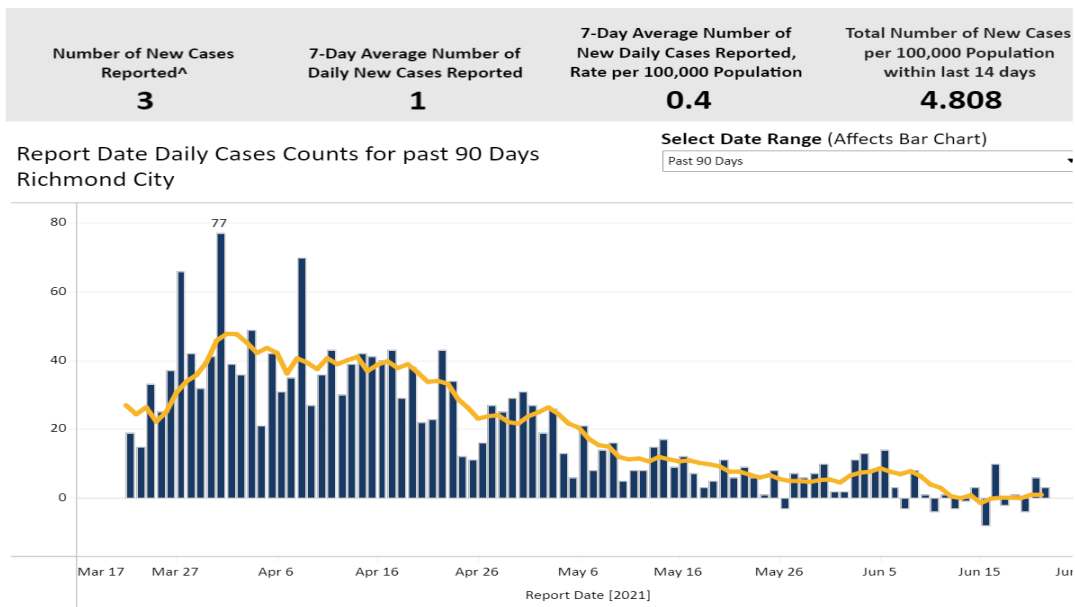
##### Cases

Cases in both districts continue to decline, with a 7-day average of 3 new cases per day, per 100,000 population in Richmond and 5 new cases per day, per 100,000 population in Henrico.

##### Case Demographics

Due to recent changes in VEDSS which have impacted the date range of data available for analysis, we have had to limit the demographic analysis in this report to data from the last 4 weeks. Within this range, females comprise a higher proportion of cases and 20-29 year olds continue to lead case counts in both districts. Regarding race and ethnicity, the highest proportion of cases is still among Black individuals in Richmond and now in Henrico as well.

#### 3.2 CASE REPORTS TRENDS BY DATE (SOURCE-VDH WEBSITE)

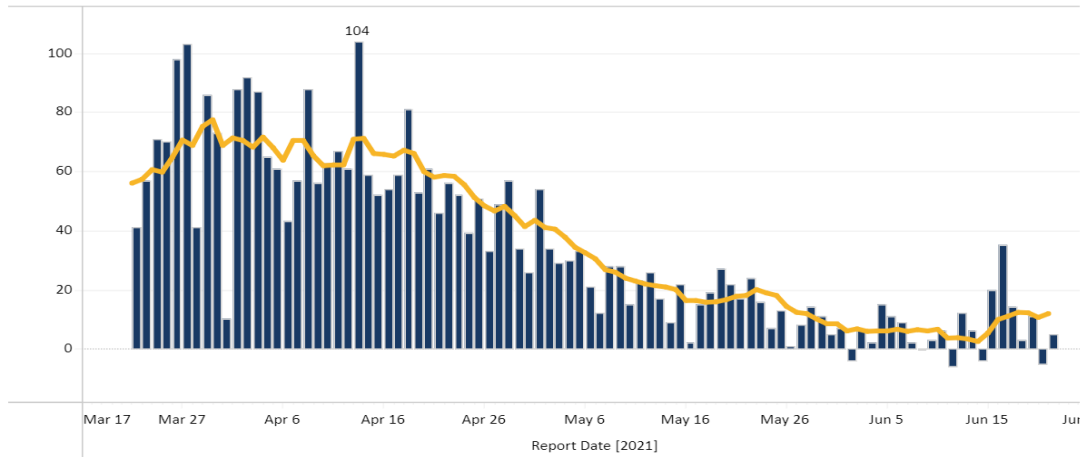


- In Richmond, the 7-day average number of daily new cases reported this week shows a continued decrease in overall case counts. 3 new cases were reported on June 21, 2021. The 7-day average of new daily cases is currently 0.4 per 100,000 population.

Number of New Cases Reported <sup>^</sup>	7-Day Average Number of Daily New Cases Reported	7-Day Average Number of New Daily Cases Reported, Rate per 100,000 Population	Total Number of New Cases per 100,000 Population within last 14 days
<b>5</b>	<b>12</b>	<b>3.6</b>	<b>30.37</b>

Report Date Daily Cases Counts for past 90 Days  
Henrico

Select Date Range (Affects Bar Chart)  
Past 90 Days

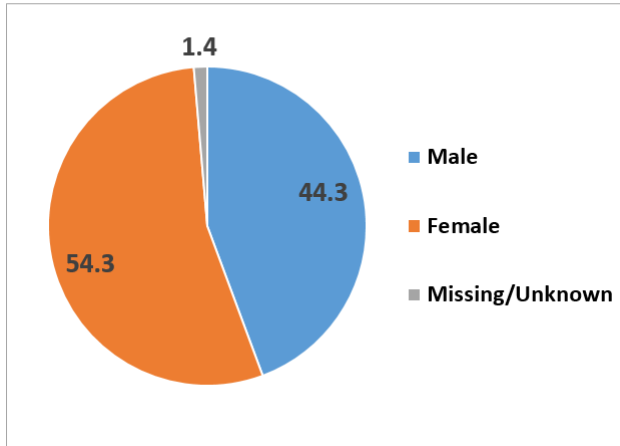


- In Henrico, the number of new cases reported per day is fluctuating, though still at a much lower count than in previous months. 5 new cases were reported on June 21, 2021. The 7-day average number of cases reported daily in Henrico County is 3.6 per 100,000 population.

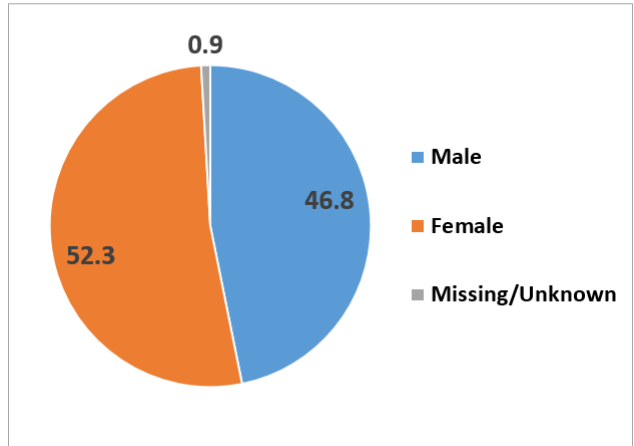
### 3.3 CASES BY SEX BY COUNTY

All percentages are based on overall case distribution, rather than the proportion of known cases for each measure, and therefore may not correspond directly with VDH percentages.

COVID-19 case distribution by Sex in the last 4 weeks (May 24 – June 21, 2021)—Richmond City, VA (N=96)

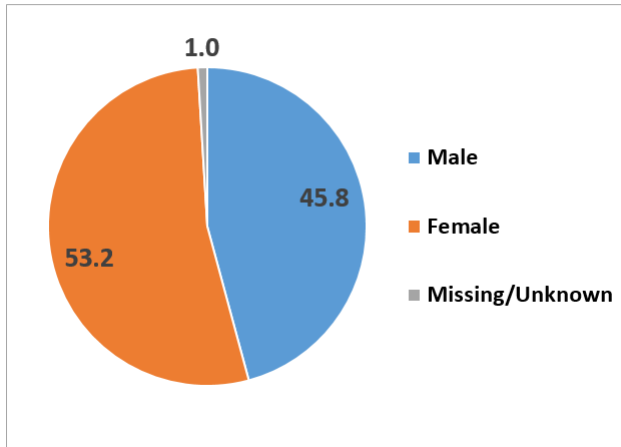


Cumulative COVID-19 case distribution by Sex as of June 21, 2021 —Richmond City, VA (n=17,136)

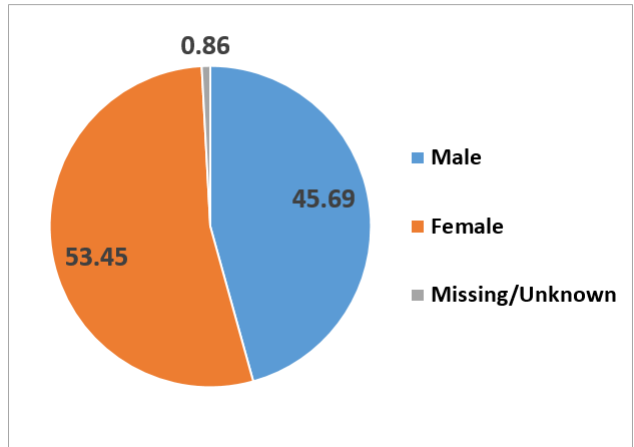


- In Richmond, over the last four weeks, females have comprised a majority of cases (54.3%) when compared to males (44.3%). Sex data has been Missing/Unknown for 1.4% of cases over the last four weeks.

COVID-19 case distribution by Sex in the last 4 weeks (May 24 – June 21, 2021)—Henrico County, VA (N=143)



Cumulative COVID-19 case distribution by Sex as of June 21, 2021 — Henrico County, VA (n=25,539)

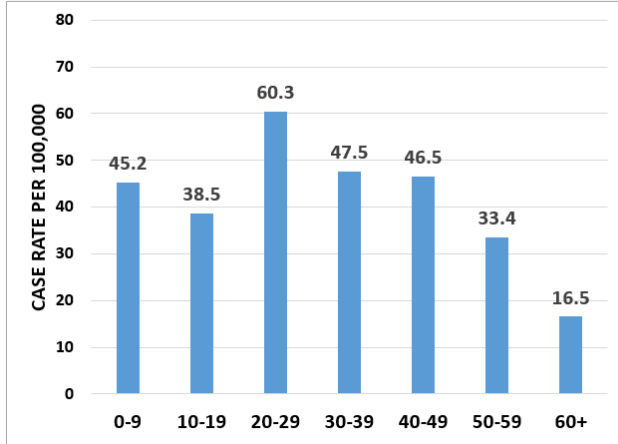


- In Henrico, over the last four weeks, females have comprised 53.2% of cases, whereas males have comprised 45.8% of cases.

### 3.4 CASES BY AGE GROUP BY COUNTY

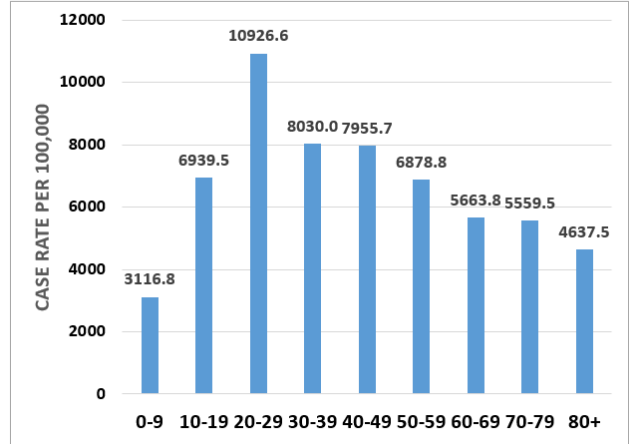
Population totals are based on 2019 data from the National Center for Health Statistics (NCHS). Please note - this is a change from previous reports which used Census data to estimate population by age group.

COVID-19 case distribution by Age group in last 4 weeks (May 24 – June 21, 2021) – Richmond City, VA (N=96)



\*Age is missing for 1.4% (n=1) of cases

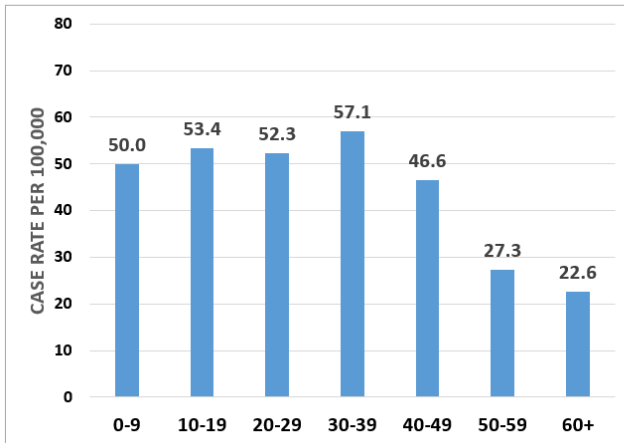
Cumulative COVID-19 case distribution by Age group as of June 21, 2021 – Richmond City, VA (N=17,136)



\*Age is missing for 0.8% (n=117) of cases

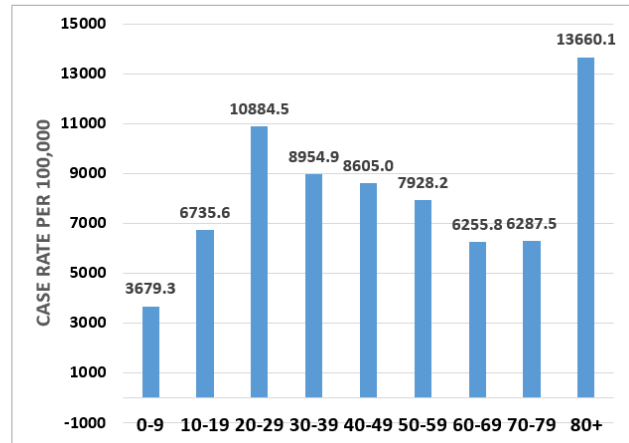
- In Richmond City, individuals aged 20-29 still comprise the highest case rates in the last four weeks, followed by a more uniform distribution of case rates for surrounding age groups.
- Individuals aged 60 and over have seen a noticeably lower case rate in the last four weeks as compared to cumulatively.

COVID-19 case distribution by Age group in the last 4 weeks (May 24 – June 21, 2021) – Henrico County, VA (N=143)



\*Age is missing for 1.92% (n=4) of cases

Cumulative COVID-19 case distribution by Age group as of June 21, 2021 – Henrico County, VA (N=25,658)



\*Age is missing for 1.0% (n=232) of cases

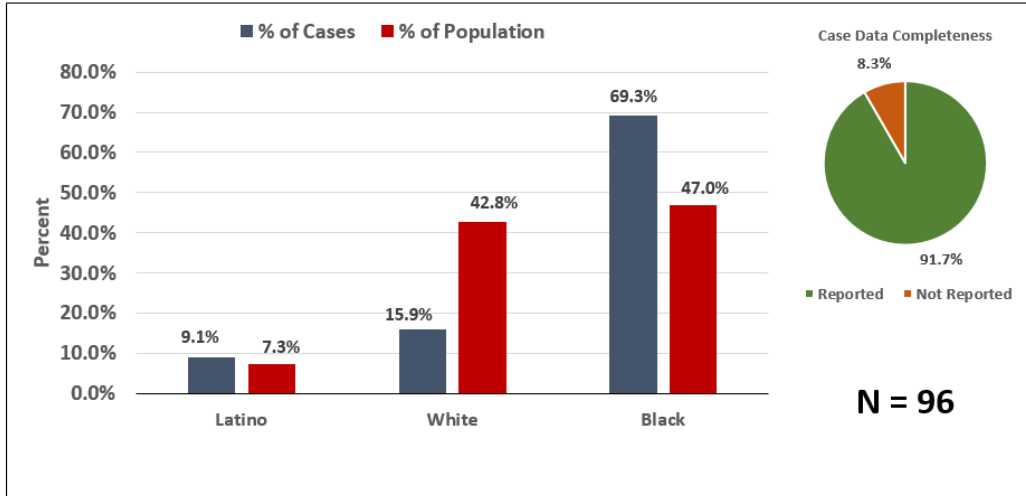
- In Henrico, case rates in the last four weeks are fairly uniform for all age groups under 50, a change from cumulative case rates, where individuals aged 20-29 have one of the higher case rates.
- Case rates are notably down for older age groups, with a particularly notable drop for individuals 60 and over.



### 3.5 CASES AND POPULATION PROPORTIONS BY RACE AND ETHNICITY BY COUNTY

Population totals are based on 2019 data from the National Center for Health Statistics (NCHS). Please note - this is a change from previous reports which used Census data to estimate population by race and ethnicity group. The categories for NCHS population estimates do not include one for "Other Race" or "Two or More Races."

**COVID-19 case distribution by Race and Ethnicity in the last 4 weeks  
(May 24 – June 21, 2021, 2021) – Richmond City, VA**



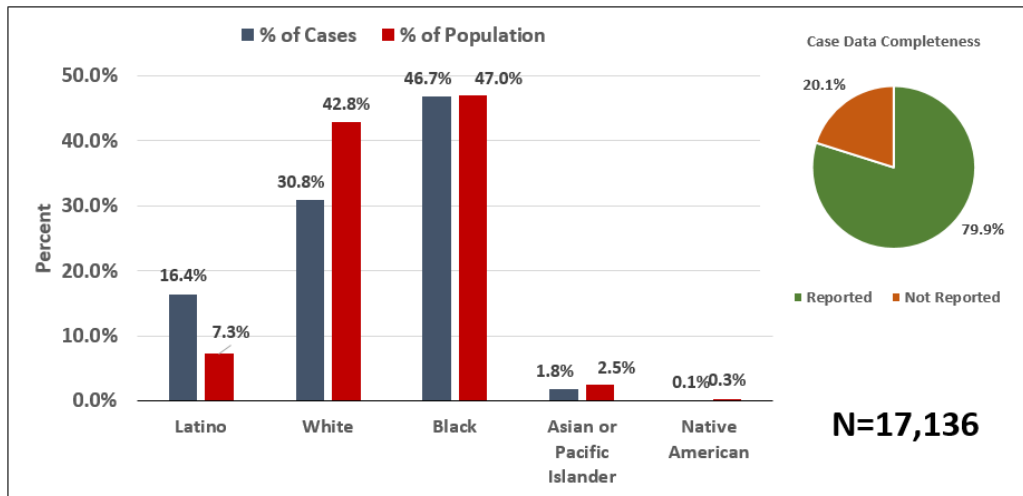
\* For race/ethnicity identification among cases, "Not Reported" comprises 8.3% (n=8).

\* NCHS population estimates are not available for Two or More Races (189 total cases) and for Other Race (340 total cases) and thus they are excluded from the plots.

\* Missing and Unknown Ethnicities were assumed to be of Non-Hispanic ethnicity

\* Cases among individuals identifying as Asian or Pacific Islander or Native American are suppressed (counts < 5)

**Cumulative COVID-19 case distribution by Race and Ethnicity  
as of June 21, 2021 – Richmond City, VA**



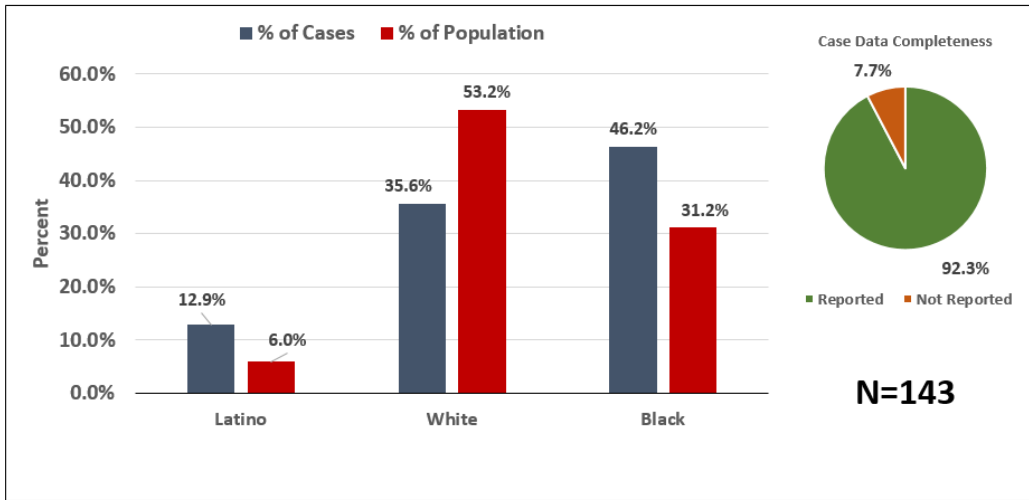
\* For race/ethnicity identification among cases, "Not Reported" comprises 20.1% (n=2,352).

\* NCHS population estimates are not available for Two or More Races (189 total cases) and for Other Race (340 total cases) and thus they are excluded from the plots.

\* Missing and Unknown Ethnicities were assumed to be of Non-Hispanic ethnicity

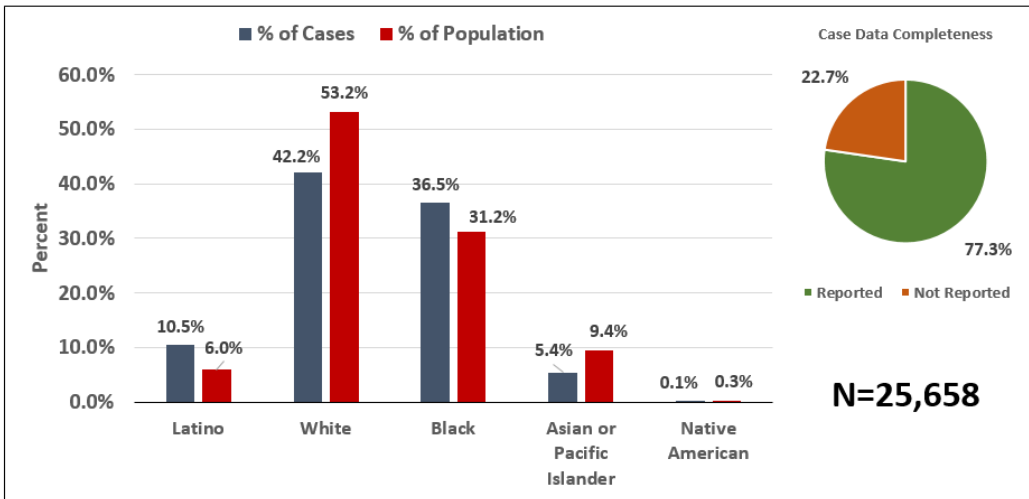
- In Richmond, the case burden for Black individuals over the last 4 weeks (69.3%) is disproportionately high relative to their population percentage (47%), while the case burden for White individuals is disproportionately low (15.9%) relative to their population percentage (42.8%).

**COVID-19 case distribution by Race and Ethnicity in the last 4 weeks  
(May 24 – June 21, 2021) – Henrico County, VA**



\* For race/ethnicity identification among cases, "Not Reported" comprises 7.7% (n=11).  
 \* NCHS population estimates are not available for Two or More Races (315 total cases) and for Other Race (727 total cases) and thus they are excluded from the plots.  
 \* Missing and Unknown Ethnicities were assumed to be of Non-Hispanic ethnicity  
 \* Cases among individuals identifying as Asian or Pacific Islander or Native American are suppressed (counts < 5)

**Cumulative COVID-19 case distribution by Race and Ethnicity  
as of June 21, 2021 – Henrico County, VA**



\* For race/ethnicity identification among cases, "Not Reported" comprises 22.7% (n=4,042).  
 \* NCHS population estimates are not available for Two or More Races (315 total cases) and for Other Race (727 total cases) and thus they are excluded from the plots.  
 \* Missing and Unknown Ethnicities were assumed to be of Non-Hispanic ethnicity

- In Henrico, the case burden for Black individuals over the last 4 weeks (46.2%) is disproportionately high relative to their population percentage (31.2%). The case burden for White individuals has been disproportionately low over the last four weeks (35.6%) relative to their population percentage (53.2%). The case burden over the past four weeks for Latino individuals (12.9%) has been disproportionately high as compared to their population percentage (6%).

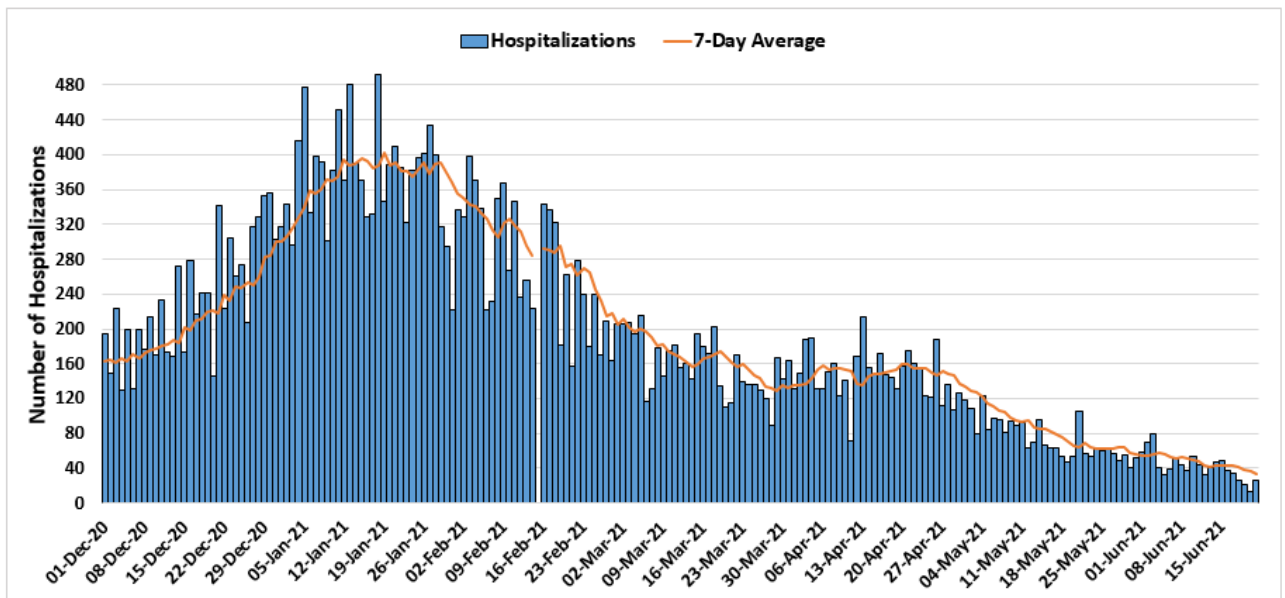
## 4.0 COVID-19 HOSPITALIZATIONS

### 4.1 SUMMARY OF HOSPITALIZATIONS

Hospitalizations among Richmond residents are fluctuating with a 7-day average of about 1. Hospitalizations among Henrico residents are decreasing, with a 7-day average of 1 daily new hospitalization reported. Looking more broadly at health systems within the Richmond catchment area, hospitalizations, ICU hospitalizations, and ventilator utilizations are also decreasing. Recently, Hospitalizations have remained low and stable. ICU Hospitalizations and ventilator utilizations have shown recent fluctuations but have overall stayed at a decreased level as compared to January of this year. Ten of the eleven hospitals in the Richmond catchment area are still operating at a normal clinical status. CJW Chippenham Hospital is operating at a full clinical status. *Hospitalizations by subgroup (sex, age, and race) are reported on a monthly basis.*

### 4.2 HOSPITALIZATIONS (CONFIRMED AND PENDING) BY DAY IN THE RICHMOND CATCHMENT AREA AS OF JUNE 21, 2021

Total Daily COVID-19 Hospitalizations, December 1<sup>st</sup>, 2020 – June 21<sup>st</sup>, 2021  
Richmond Catchment Area (38647 of 75665)



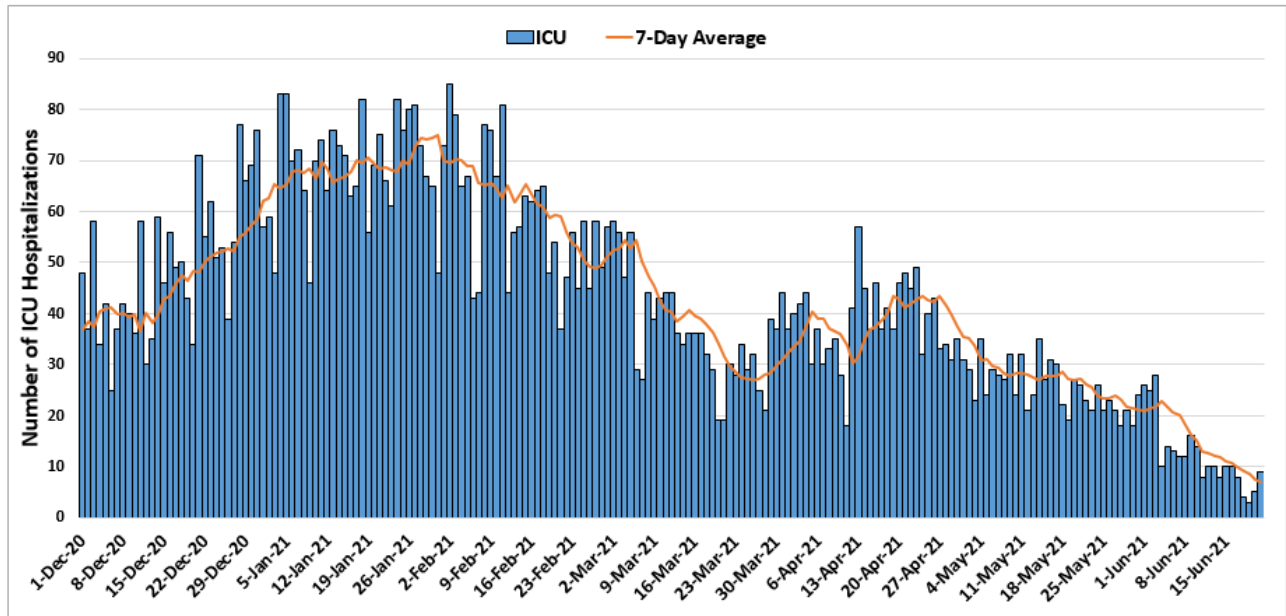
\* Data points from March until November 30<sup>th</sup> are excluded to allow for clarity in trends/patterns

\* Data points from February 15<sup>th</sup>, 2021 were omitted due to issues with data quality

- Hospitalizations in the Richmond Catchment area have been decreasing since late April, following a larger decrease beginning in January leading into a plateau beginning in March.
- Note: Data from February 15<sup>th</sup>, 2021 showed an erroneously high value and was subsequently omitted from the analysis. Steps are being taken to restore the quality of this data.

4.3 ICU HOSPITALIZATIONS (CONFIRMED AND PENDING) BY DAY IN THE RICHMOND CATCHMENT AREA AS OF JUNE 21, 2021

Total Daily COVID-19 ICU Hospitalizations, December 1<sup>st</sup>, 2020 – June 21<sup>st</sup>, 2021  
Richmond Catchment Area (8654 of 18398)

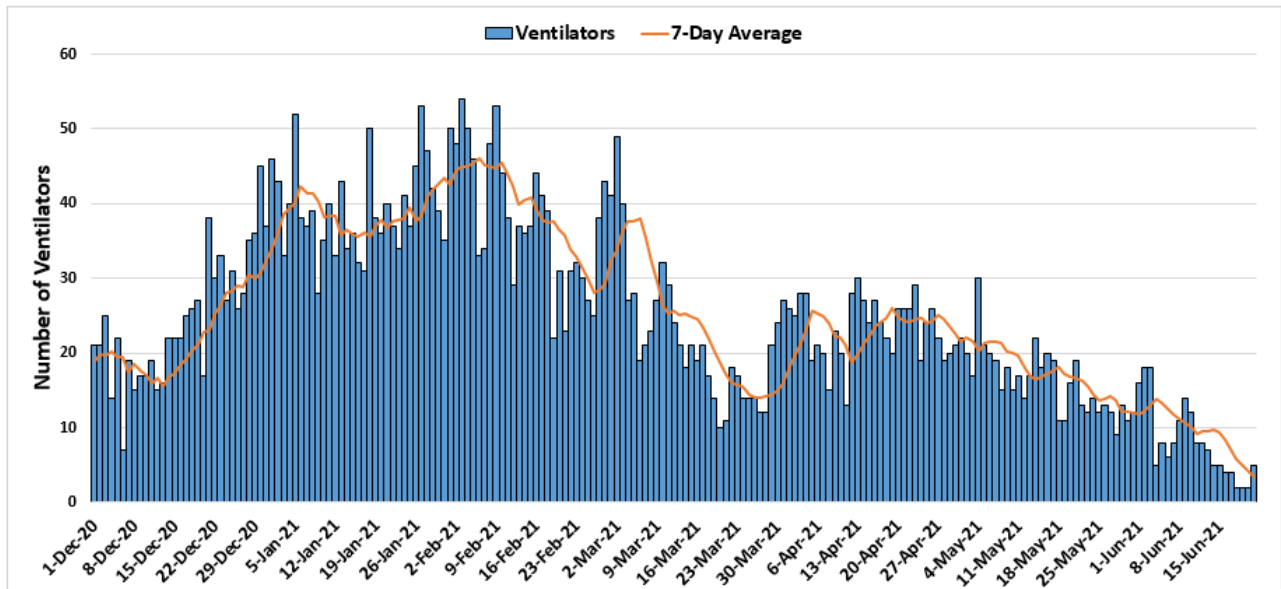


\* Data points from March until November 30<sup>th</sup> are excluded to allow for clarity in trends/patterns

- Despite an uptick during the first two weeks of April, ICU hospitalizations in the Richmond Catchment area have largely been decreasing. A brief uptick was noted the week of June 1st.

4.4 VENTILATOR UTILIZATIONS (PATIENTS ON VENTILATORS) BY DAY IN THE RICHMOND CATCHMENT AREA AS OF JUNE 21, 2021

Total Daily COVID-19 Ventilator Utilizations, December 1<sup>st</sup>, 2020 – June 21<sup>st</sup>, 2021  
Richmond Catchment Area (5085 of 10228)



\* Data points from March until November 30<sup>th</sup> are excluded to allow for clarity in trends/patterns

- Ventilator utilization in the Richmond Catchment area has been trending downwards leading into late June, following fluctuations throughout the month of March. A recent uptick was noted during the week of June 1st.

## 5.0 COVID-19 FATALITIES

### 5.1 SUMMARY OF FATALITIES

Deaths based on date of death in both districts are remaining relatively low and stable moving through the third week of June, with zero deaths reported in Richmond City and five deaths reported in Henrico County since the start of the month. Please note that trends in death data are frequently impacted by a lag in reporting. *Deaths by subgroup (sex, age, and race) are reported on a monthly basis.*

## 6.0 VACCINATION

### 6.1 VACCINE SUMMARY

Richmond and Henrico Health Districts are in Phase 2 of vaccination. Anyone 12 or older is eligible to receive a vaccine. As of June 21, 53.3% of the region’s population has received at least one dose of the vaccine and 44.9% of the region’s population has been fully vaccinated. Approximately 52.5% of Richmond and Henrico’s combined population has received at least one dose and 45.0% of the two districts combined population has been fully vaccinated. Local health departments currently appear to be administering the largest percentage of vaccines to Richmond and Henrico residents, compared with other providers.

The majority of vaccine recipients in both districts have been female. In both Richmond and Henrico, older age groups have consistently been vaccinated at a higher rate than younger age groups, with individuals in Richmond 65 and over, in Henrico 65 and over, and in Henrico between 50-64 all reaching the 70% goal for vaccinated percentage. Available data indicate that eligible White individuals have received the majority of the vaccine in both districts.

### 6.2 PERCENTAGE OF VACCINATION GOALS REACHED BY POPULATION

		POPULATION	POPULATION GOAL (70%)	PEOPLE WITH AT LEAST ONE DOSE	PEOPLE FULLY VACCINATED
Richmond	12-17	11,150	7,805	3,429 (30.8%)	2,348 (21.1%)
	<b>18+</b>	<b>190,750</b>	<b>133,525</b>	<b>102,158 (53.6%)</b>	<b>88,199 (46.2%)</b>
	65+	31,809	22,266	23,516 (73.9%)	20,846 (65.5%)
Henrico	12-17	25,954	18,168	11,945 (46.0%)	8,136 (31.3%)
	<b>18+</b>	<b>256,660</b>	<b>179,662</b>	<b>177,389 (69.1%)</b>	<b>154,050 (60.0%)</b>
	65+	52,720	36,904	45,750 (86.8%)	41,094 (77.9%)

Population totals are based on 2019 data from the National Center for Health Statistics (NCHS). Please note - this is a change from previous reports which used Census data to estimate population by age group.

Nationally, the Biden administration is using the **percentage of adults (individuals 18 and over)** to track progress in vaccination.

Though the percentage of the population needed to reach herd immunity is still uncertain, in line with federal guidance, we have set an overall goal of vaccinating 70% of the population. First and second doses of the Pfizer vaccine must be administered at least 21 days apart. First and second doses of the Moderna vaccine must be administered at least 28 days apart. People who received the Johnson & Johnson vaccine, which is a single dose, are included in the count of first doses administered.

6.3 VACCINATIONS BY LOCALITY AS OF JUNE 21, 2021 - SOURCE: [VDH.VIRGINIA.GOV](http://VDH.VIRGINIA.GOV)

HEALTH DISTRICT	LOCALITY	TOTAL POPULATION	FIRST DOSES ADMINISTERED	SECOND DOSES ADMINISTERED
Chesterfield	Chesterfield	352,802	189,518	161,421
	Colonial Heights	17,370	7,899	6,556
	Powhatan	29,652	14,126	12,220
Chickahominy	Charles City	6,963	3,568	3,282
	Goochland	23,753	14,943	13,594
	Hanover	107,766	61,954	55,745
	New Kent	23,091	11,177	9,967
Henrico	Henrico	330,818	189,334	162,186
Richmond	Richmond City	230,436	105,587	90,547
<b>Total</b>		<b>1,122,651</b>	<b>598,106</b>	<b>515,518</b>

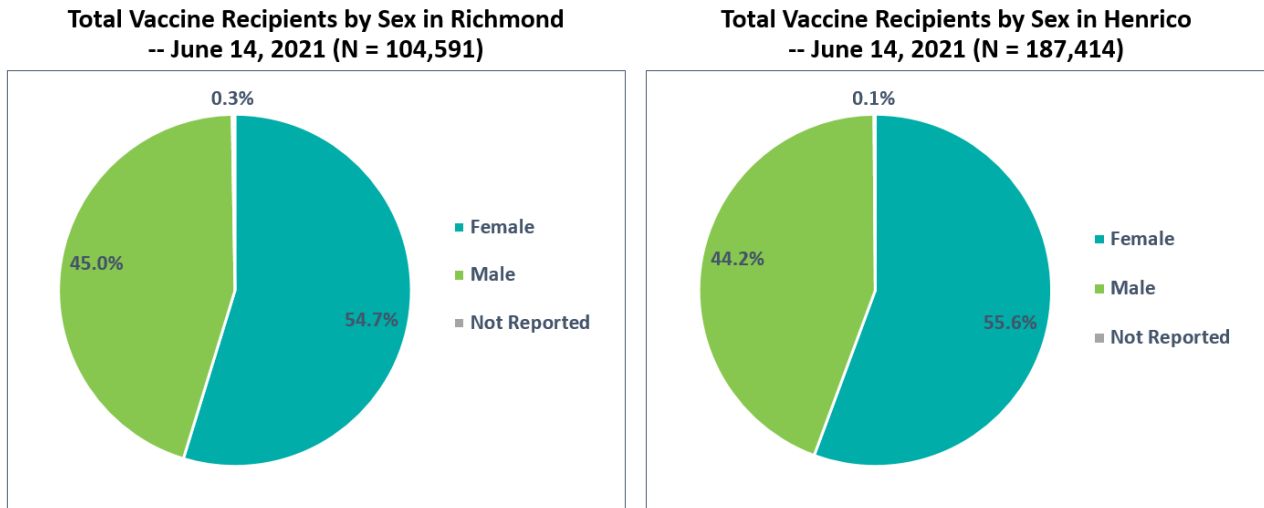
Population totals are based on 2019 data from the National Center for Health Statistics (NCHS). Please note - this is a change from previous reports which used Census data to estimate population by age group.

We have set a goal of vaccinating 75% of the population to reach herd immunity. First and second doses of the Pfizer vaccine must be administered at least 21 days apart. First and second doses of the Moderna vaccine must be administered at least 28 days apart. People who received the Johnson & Johnson vaccine, which is a single dose, are included in the count of first doses administered.

#### 6.4 VACCINE DISTRIBUTION BY DEMOGRAPHIC SUBGROUP

**UPDATE:** Population estimates for age subgroups and for race and ethnicity subgroups have been changed for this report from the U.S. Census Bureau's American Community Survey (ACS) 2019 5-year estimates to the National Center for Health Statistics (NCHS) 2019 estimates to align with estimates used by other VDH metrics. This change also involves new race and ethnicity categories: Latino or Hispanic, Non-Hispanic White, Black or African-American, Asian or Pacific Islander, and Native American. Racial groups such as Two or more Races and Other Race have been excluded from the following metrics as they are without corresponding NCHS estimates, but the counts for these groups can be seen in the footnotes immediately below.

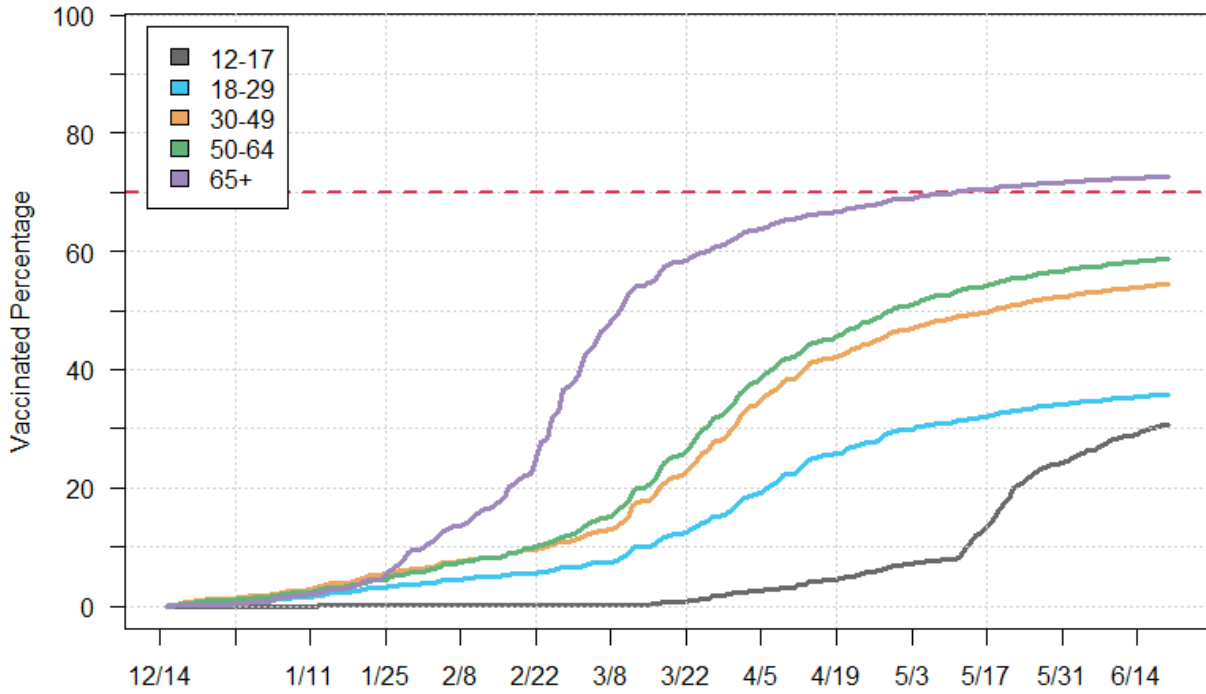
In both Richmond and Henrico, a majority of vaccinated individuals have been female.



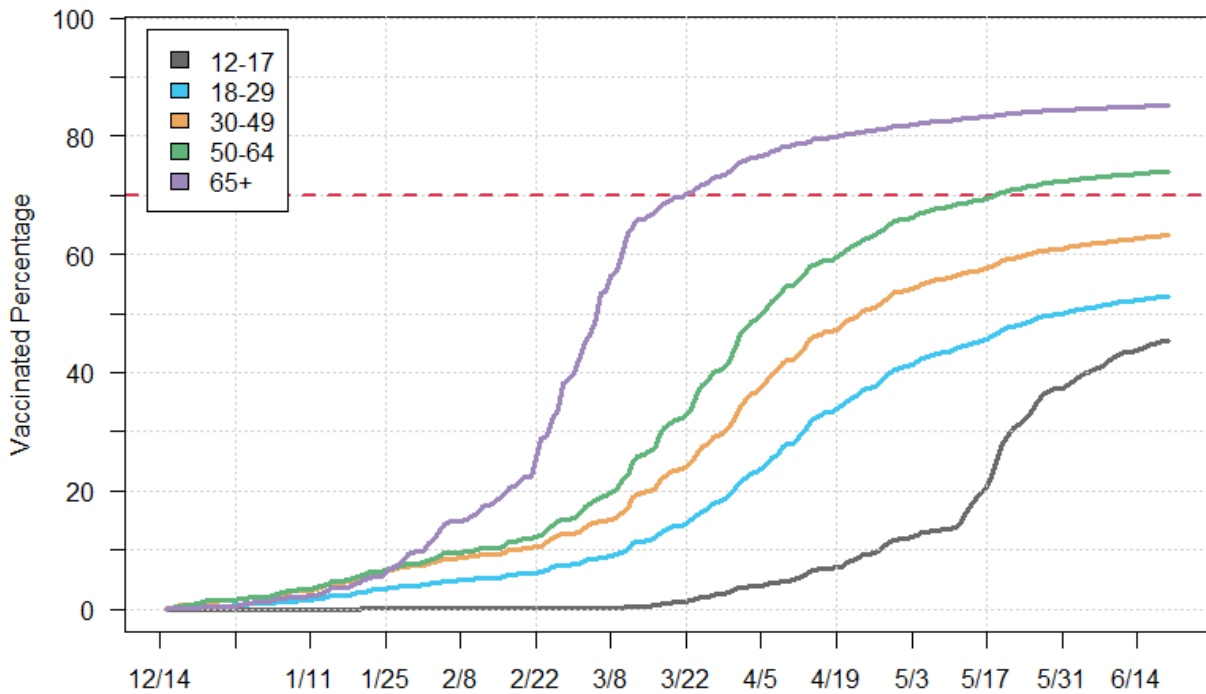
The following charts track vaccination rates by age group over time since vaccinations first began in mid-December. In both Richmond and Henrico, we can see a steep increase in vaccination rates in February and early March for individuals 65 and over such that over 70% of this age group is now vaccinated but new vaccinations are rising slowly. Individuals aged 18 to 29, 30 to 49, and 50 to 64 in Richmond saw sharp increases in vaccination rates in mid-March through April, with a steady but slower increase in vaccinations from May through mid-June. These same age groups in Henrico saw a similar pattern, but the dropoff to a slower increase did not occur until later May. Among individuals aged 12 to 17, vaccination rates increased at a slow pace until vaccine opportunities opened up to the general population and individuals aged 12 to 15 were able to get vaccinated, at which point we have seen a sharp increase in vaccination rates that has not yet noticeably slowed. All data is subject to lags in reporting, particularly in recent weeks.

Individuals in Henrico have seen consistently higher vaccination rates across all age groups as compared to Richmond. Individuals in Henrico 65 and over reached the 70% vaccinated threshold in late March while individuals in Richmond 65 and over did not reach this threshold until early May. In addition, individuals in Henrico between 50 and 64 reached this threshold in mid-May, while the same age group in Richmond is still well short of this goal.

**Vaccinated Percentage over Time by Age Group - Richmond**



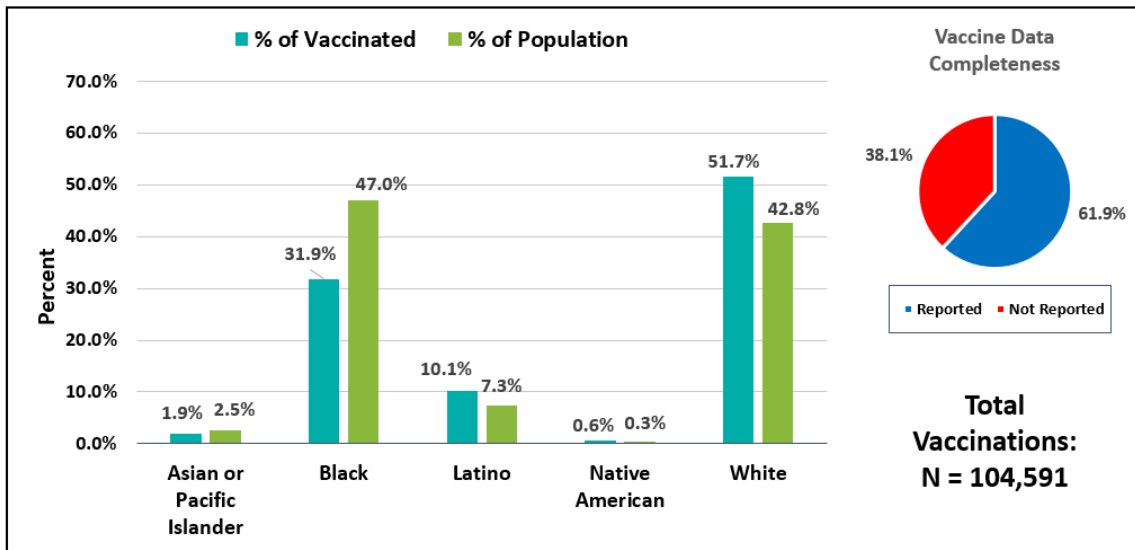
**Vaccinated Percentage over Time by Age Group - Henrico**





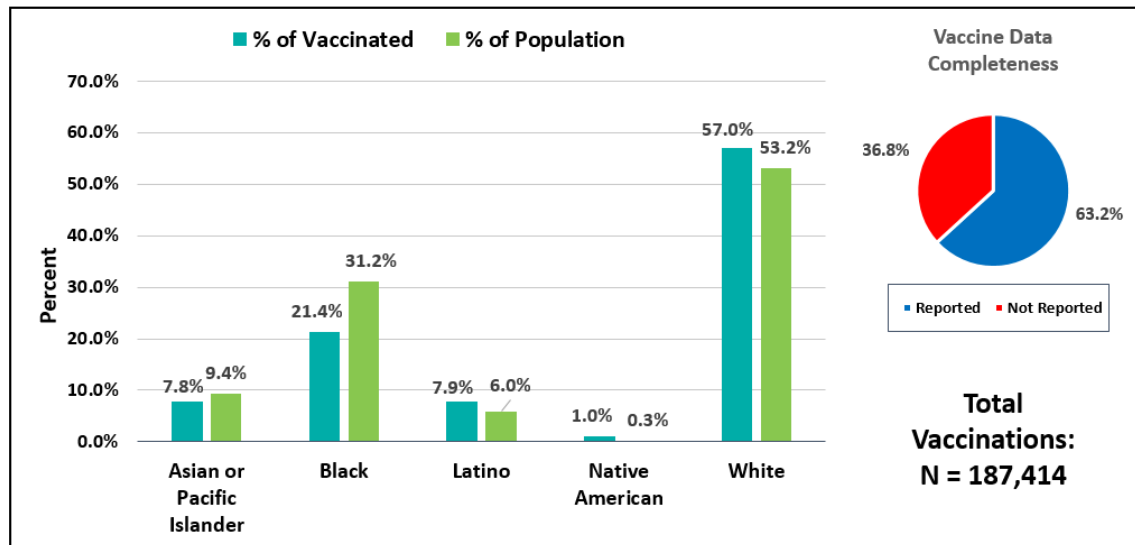
The following charts compare the percentage breakdown of racial or ethnic identification of vaccinated individuals to the expected percentage breakdown of the racial or ethnic identification of the population. A notable discrepancy can be seen when looking at Black individuals, who comprise 47.0% of the Richmond population and 31.2% of the Henrico population yet only 31.9% of vaccine recipients in Richmond and 21.4% of vaccine recipients in Henrico.

### Vaccine Recipients vs. Population by Race/Ethnicity Percentages in Richmond – Dec 15, 2020 to June 21, 2021



- \* For race/ethnicity of vaccine recipients, "Not Reported" comprises 38.1% (n=39,884).
- \* Individuals identifying as "Other Race" account for 2,482 vaccinations (2.4%).
- \* Missing and Unknown Ethnicities were assumed to be of Non-Hispanic ethnicity.

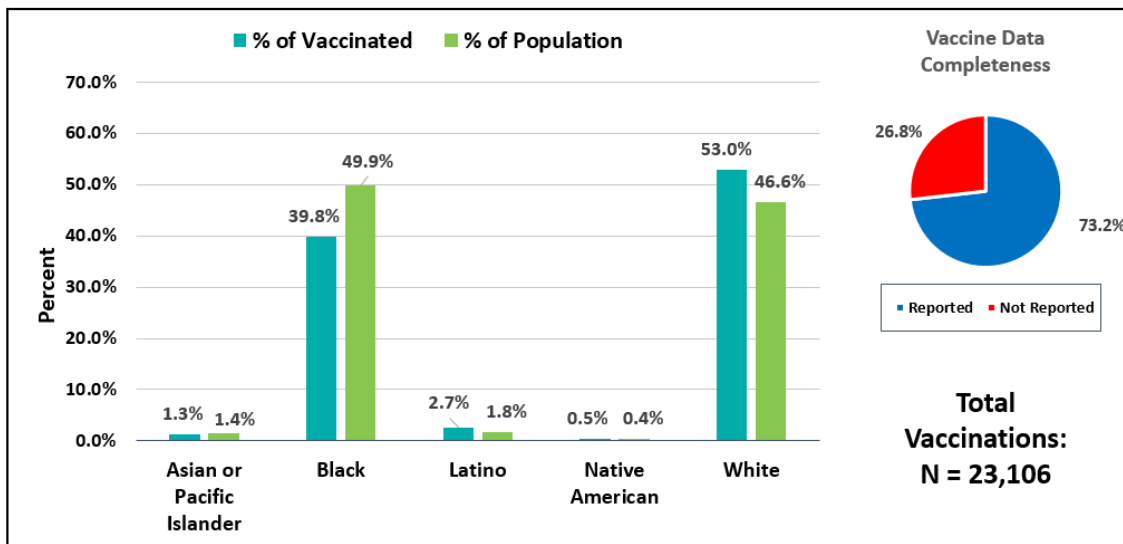
### Vaccine Recipients vs. Population by Race/Ethnicity Percentages in Henrico – Dec 15, 2020 to June 21, 2021



- \* For race/ethnicity of vaccine recipients, "Not Reported" comprises 36.8% (n=68,964).
- \* Individuals identifying as "Other Race" account for 5,761 vaccinations (n=3.1%)
- \* Missing and Unknown Ethnicities were assumed to be of Non-Hispanic ethnicity.

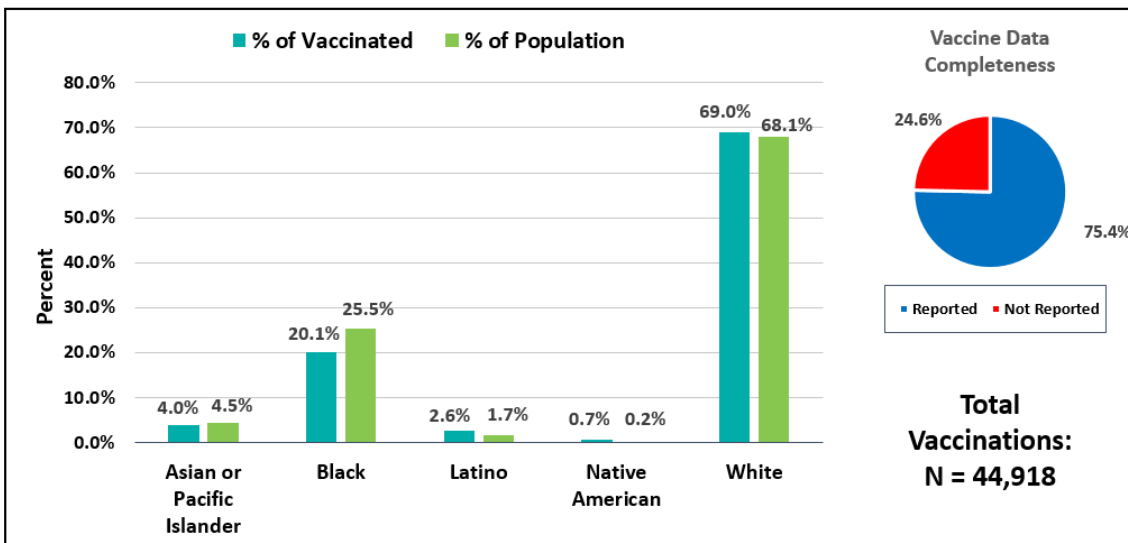
The figures below compare the percentage breakdown by race and ethnicity specifically for individuals 65 and over. In Richmond City, Black individuals comprise 49.9% of the population of those aged 65 years and older, yet make up only 39.8% of vaccine recipients. This discrepancy can also be noted in Henrico, where Black individuals make up 25.5% of the population, yet thus far have only comprised 20.1% of vaccine recipients.

### Vaccine Recipients vs. Population 65 and Over by Race/Ethnicity Percentages in Richmond – Dec 15, 2020 to June 21, 2021



- \* For race/ethnicity of vaccine recipients, "Not Reported" comprises 26.8% (n=6,195).
- \* Individuals identifying as "Other Race" account for 453 vaccinations (2.0%).
- \* Missing and Unknown Ethnicities were assumed to be of Non-Hispanic ethnicity.

### Vaccine Recipients vs. Population 65 and Over by Race/Ethnicity Percentages in Henrico – Dec 15, 2020 to June 21, 2021



- \* For race/ethnicity of vaccine recipients, "Not Reported" comprises 24.6% (n=11,065) of vaccinations.
- \* Individuals identifying as "Other Race" account for 1,227 vaccinations (3.6%)
- \* Missing and Unknown Ethnicities were assumed to be of Non-Hispanic ethnicity.