

# WEEKLY CASE REPORT FOR EXTERNAL USE

MONTH OF JUNE (JUNE 1- 28, 2021)

<b>KEY TAKEAWAYS</b>	<b>2</b>
<b>1.0 COVID-19 SNAP SHOT</b>	<b>4</b>
1.1 CONFIRMED CASES, HOSPITALIZATIONS, FATALITIES, AND PROBABLE CASES BY COUNTY	4
1.2 CURRENT COVID-19 HOSPITALIZATIONS IN THE RICHMOND CATCHMENT AREA ON MAY 30, 2021	5
<b>2.0 COVID-19 TESTING ENCOUNTERS AND POSITIVITY</b>	<b>5</b>
2.1 TESTING SUMMARY	5
2.2 NUMBER OF PCR TESTS RELATIVE TO STATEWIDE TESTING GOAL	6
<b>3.0 COVID-19 CASES</b>	<b>7</b>
3.1 SUMMARY OF CASES	7
3.2 CASE REPORTS TRENDS BY DATE (SOURCE-VDH WEBSITE)	8
3.3 CASES BY SEX BY COUNTY	10
3.4 CASES RATES BY AGE GROUP BY COUNTY	11
3.5 CASES AND POPULATION PROPORTIONS BY RACE AND ETHNICITY BY COUNTY	12
<b>4.0 COVID-19 HOSPITALIZATIONS</b>	<b>14</b>
4.1 SUMMARY OF HOSPITALIZATIONS	14
4.2 HOSPITALIZATIONS (CONFIRMED AND PENDING) BY DAY IN THE RICHMOND CATCHMENT AREA AS OF MAY 30, 2021	14
4.3 ICU HOSPITALIZATIONS (CONFIRMED AND PENDING) BY DAY IN THE RICHMOND CATCHMENT AREA AS OF MAY 30, 2021	15
4.4 VENTILATOR UTILIZATIONS (PATIENTS ON VENTILATORS) BY DAY IN RICHMOND CATCHMENT AREA AS OF MAY 30, 2021	16
4.5 HOSPITALIZATIONS BY SEX, RACE, AND AGE BY COUNTY	16
<b>5.0 COVID-19 FATALITIES</b>	<b>17</b>
5.1 SUMMARY OF FATALITIES	17
5.2 DEATHS BY SEX, RACE, AND AGE BY COUNTY	17
<b>6.0 VACCINATION</b>	<b>18</b>
6.1 VACCINE SUMMARY	18
6.2 PERCENTAGE OF VACCINATION GOALS REACHED BY POPULATION	18
6.3 VACCINATIONS BY LOCALITY AS OF MAY 31, 2021 - SOURCE: VDH.VIRGINIA.GOV	19
6.4 VACCINE DISTRIBUTION BY DEMOGRAPHIC SUBGROUP - SOURCE: VIIS	20

## KEY TAKEAWAYS

- According to the [VDH Pandemic Metrics Dashboard](#), in Richmond, there were **6.6 new cases per 100,000 in the last week**. The trend of the last 6 days has been positive and cases are considered to be fluctuating. Percent **positivity** for the locality is 2.1% and is increasing. In Henrico, there were **21.6 new cases per 100,000 in the last week**. The trend of the last 19 is positive and is considered to be **increasing**. Percent positivity for the locality is 1.1% and is fluctuating.
- Consistent with the Pandemic Metrics Dashboard, **PCR percent positivity** has increased slightly in Richmond from 1.7% to 2.1% in the last month.. **The number of PCR tests administered** across providers has also dropped notably in both districts in the last month, compared to the preceding three months.
- Following upticks during late March, cases in both districts declined throughout the months of April and May and have mostly subsided in the month of June. Compared to last month, based on **VEDSS** data by date, cases in Richmond dropped from a 7 day average of 4.0 down to **0.9 daily new cases per 100,000 population**. In Henrico, cases dropped from **6.0 to 3.1 daily new cases per 100,000**. Additional epidemic curves based on event date also show a decline in cases. Sections 3.10 and 3.11 provide maps of cases in the past month, including and excluding LTCFs, respectively.
  - **Females** in Richmond comprise a higher proportion of cases compared to **males**, both in the last month and cumulatively, while males constitute a higher proportion of cases in the last four weeks but a lower proportion cumulatively. In Richmond, **20-29** year olds continue to have the highest case rate by age group overall and in the last four weeks, though their case rate is closer to other age groups in the last four weeks. In Henrico, individuals over the age of **80 years** show the highest cumulative case rate, whereas over the past four weeks, the group with the highest case rate has been individuals aged **30-39** years of age. **Regarding race and ethnicity**, in Richmond, the highest proportion of cases is still among Black individuals, again both cumulatively and in the last 4 weeks. In Henrico, over the last four weeks and cumulatively White individuals comprise the highest case burden, though Black individuals' case burden is disproportionate to their population. Sections 3.8 and 3.9 show weekly trends in cases by age group and race and ethnicity, respectively.
- After an overall decline, hospitalizations have plateaued with a 7-day average of less than 1 admission per day in Richmond and around 1 admission per day in Henrico, based on VEDSS data. Looking more broadly at the 11 hospitals that comprise the Richmond catchment area, hospitalizations, ICU hospitalizations and ventilator utilizations have continued to decline throughout the month of June. All 11 hospitals are currently operating at a normal clinical status. Regarding hospitalization demographics, cumulative hospitalizations are highest among females and Black individuals in both districts. The median age of hospitalization has not changed since last month and is still 61 in Richmond and 67 in Henrico.**Maps of hospitalizations** are included in section 4.7.
- After fluctuations in March, there have been minimal **COVID-19 deaths** in April through June in Richmond and Henrico. Cumulatively, deaths are highest among male individuals and Black individuals in Richmond and highest among female individuals and White individuals in Henrico. The median age of death has not changed in recent months and is 77 in Richmond and 80 in Henrico. **Maps of deaths** are included in section 5.4.
- Richmond and Henrico Health Districts are in **Phase 2 of vaccination**. Anyone 12 or older is now eligible to receive the vaccine. Vaccine supply and distribution are summarized in the tables below. As of June 27, 2021, 54.3% of the region's population aged 18 and over has received at least one dose of the vaccine, and 47.1% of the region's total 18+ population has been fully vaccinated. For

Richmond and Henrico's combined population, 53.4% have received at least one dose, while 46.1% of the two districts combined population has been fully vaccinated.

- The majority of **vaccine recipients** in Richmond City have been female and people 70-79, while the majority in Henrico County have been female and people over 65 years old. Available data indicate that eligible White individuals have received the majority of the vaccine. In this internal report, we have also included maps of vaccination uptake relative to case burden and social vulnerability (section 8.7).

## 1.0 COVID-19 SNAP SHOT

### 1.1 CONFIRMED CASES, HOSPITALIZATIONS, FATALITIES, AND PROBABLE CASES BY COUNTY

CASE STATUS	RICHMOND CITY	HENRICO COUNTY	VIRGINIA
New cases this month	64	194	4320
New cases this week (June 28)	16	71	1152
All cases	17152	25729	679917
Confirmed cases	14118	18971	529237
Hospitalizations	807	1066	28827
Deaths	234	565	9625
Probable cases	3034	6758	150680
Hospitalizations	21	46	1552
Deaths	37	70	1777
Case rate per 100,000	7443.3	7777.4	7965.7

*Weekly cases added are estimated as the difference between the cases recorded from the current and prior week*

*Case Rate per 100,000=(confirmed+probable)/population count \*100,000.*

*Population totals are based on 2019 data from the National Center for Health Statistics (NCHS). Please note - this is a change from previous reports which used Census data to estimate population by age group.*

**1.2 CURRENT COVID-19 HOSPITALIZATIONS IN THE RICHMOND CATCHMENT AREA ON MAY 30, 2021**

The data included in this section comes from VHASS and it includes data from the following hospitals: VCU Health System, Retreat Doctors', Bon Secours Community, CWJ Chippenham, CWJ Johnson Willis, VA Medical Center, Bon Secours St. Mary's, Henrico Doctors, and Parham Doctors, Bon Secours St. Francis, and Memorial Regional Medical Center.

	TOTAL IN USE FOR COVID-19	CURRENTLY AVAILABLE
Confirmed Hospitalizations	46	183
Pending Hospitalizations	5	
Confirmed - ICU	19	68
Pending - ICU	*	
Confirmed - Ventilators	10	183
Pending - Ventilators	*	

Within these 11 hospitals that comprise the Richmond catchment area, there are currently 68 available adult ICU beds, and 183 available ventilators. Based on the VHASS hospital dashboard on June 28, all hospitals are operating at normal clinical status.

*\*Counts <5 have been suppressed.*

*\*\*A clinical status of "normal" indicates that hospital clinical resources are operating within normal conditions. A clinical status of "full" indicates that hospital clinical resources are exceeded and acceptable care cannot be provided to additional patients. Diversion or Community surge response is required.*

**2.0 COVID-19 TESTING ENCOUNTERS AND POSITIVITY**

**2.1 TESTING SUMMARY**

Total tests by testing modality and the associated 7-day average in percent positivity are summarized in the table below. Data are from the [VDH public dashboard](#) on June 28, 2021.

	RICHMOND CITY		HENRICO COUNTY	
	Tests	Positivity	Tests	Positivity
PCR*	260,199	2.1%	393,308	1.1%
Antigen	52,285	1.4%	104,101	2.1%
Total (PCR, antigen, and antibody)	317,067	2.4%	506,935	2.0%

\*All testing metrics included in previous reports have been based on PCR tests

2.2 NUMBER OF PCR TESTS RELATIVE TO STATEWIDE TESTING GOAL

The counts below are based on the total number of testing encounters provided by the Virginia Department of Health for Richmond City and Henrico County. **It is important to note that the number of testing encounters is different from the number of people tested, as some individuals may be tested more than once.** The counts below should be viewed as an approximation of the percentage of each county’s population that has been tested and may be higher than the actual percentage of the population tested.

MONTH	RICHMOND CITY - TOTAL PCR TESTS/MONTH	HENRICO COUNTY - TOTAL PCR TESTS/MONTH
June 2021	6,514	12,630
May 2021	9,066	17,393
April 2021	13,590	24,550
March 2021	16,505	27,164
February 2021	22,475	31,293
January 2021	35,001	50,108
December 2020	29,921	40,568

*The testing date was not reported for **483 PCR testing encounters in Richmond** and not reported for **909 PCR testing encounters in Henrico**, inclusive of all PCR tests since January 2020.*

## 3.0 COVID-19 CASES

### 3.1 SUMMARY OF CASES

Following upticks during late March, cases in both districts declined throughout the months of April and May and have mostly subsided in the month of June. Compared to last month, based on VEDSS data by date, cases in Richmond dropped from a 7 day average of 4.0 down to 0.9 daily new cases per 100,000 population. In Henrico, cases dropped from 6.0 to 3.1 daily new cases per 100,000. Additional epidemic curves based on event date also show a decline in cases.

Females in Richmond comprise a higher proportion of cases compared to males, both in the last month and cumulatively, while males constitute a higher proportion of cases in the last four weeks but a lower proportion cumulatively. In Richmond, 20-29 year olds continue to have the highest case rate by age group overall and in the last four weeks, though their case rate is closer to other age groups in the last four weeks. In Henrico, individuals over the age of 80 years show the highest cumulative case rate, whereas over the past four weeks, the group with the highest case rate has been individuals aged 30-39 years of age. Regarding race and ethnicity, in Richmond, the highest proportion of cases is still among Black individuals, again both cumulatively and in the last 4 weeks. In Henrico, over the last four weeks and cumulatively White individuals comprise the highest case burden, though Black individuals' case burden is disproportionate to their population.

NOTE: Data quality control efforts over the last few weeks have led to the retroactive district reassignment of previously reported cases, sometimes leading to "negative" cases on a given day in Richmond or Henrico when the number of cases move to another district is greater than the combination of cases moved to Richmond or Henrico along with the new cases reported on that day.

### 3.2 CASE REPORTS TRENDS BY DATE (SOURCE-VDH WEBSITE)

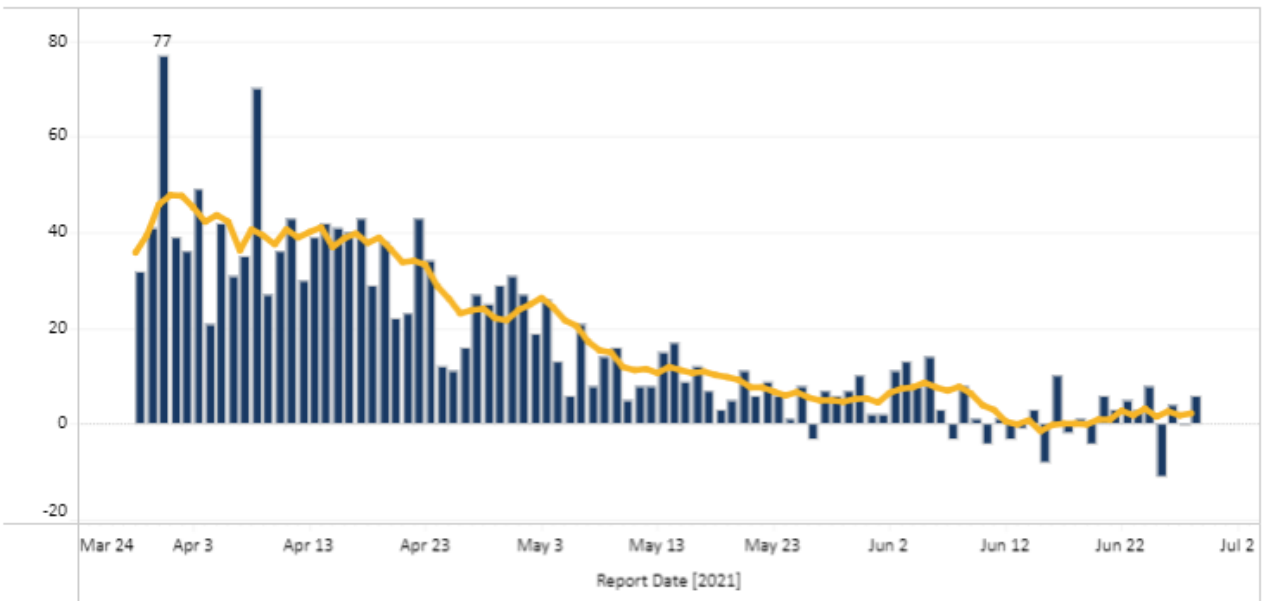
The report date corresponds to the date the case count was reported publicly. The report date does not have any equivalent variable in VEDSS, and cannot be directly linked to case-specific dates (e.g., event dates or lab report dates). Case counts by report date are estimated by subtracting the cumulative cases on the previous day from that of the current day. The 7-day moving average is a recurrent average of the number of cases for each 7-day data sequence.

Number of New Cases Reported <sup>^</sup>	7-Day Average Number of Daily New Cases Reported	7-Day Average Number of New Daily Cases Reported, Rate per 100,000 Population	Total Number of New Cases per 100,000 Population within last 14 days
<b>6</b>	<b>2</b>	<b>0.9</b>	<b>9.179</b>

Report Date Daily Cases Counts for past 90 Days  
Richmond City

Select Date Range (Affects Bar Chart)

Past 90 Days



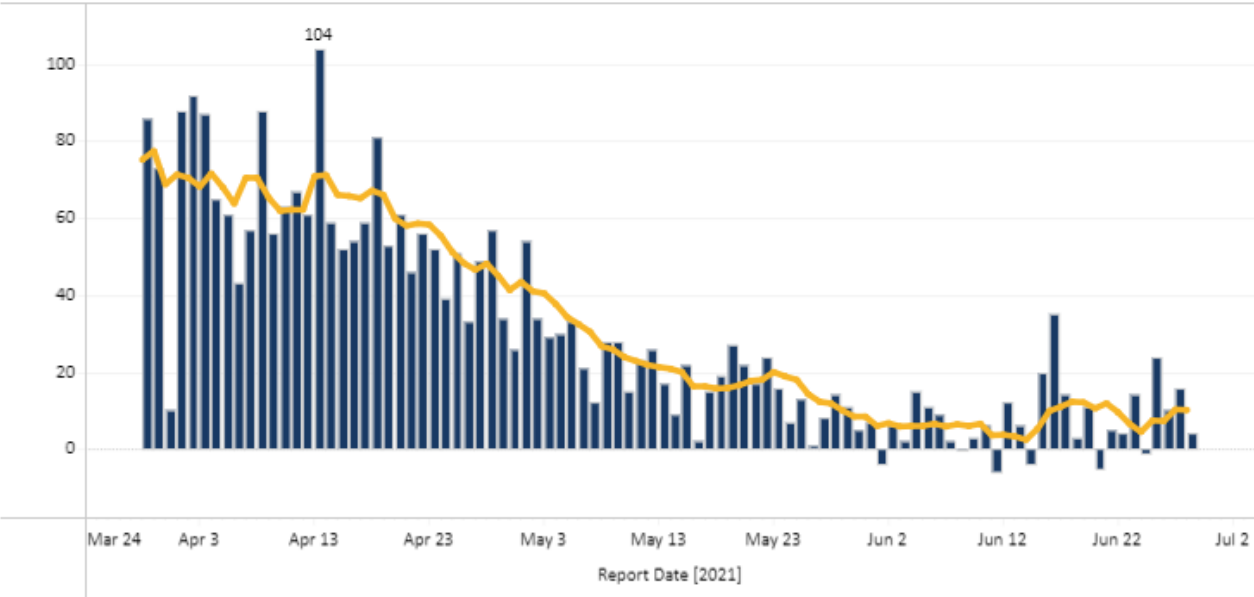
- Following a rapid decline from January through May, and despite brief upticks in late March and early April, recent data suggests a decrease in overall case numbers in the Richmond City area, with a 7-Day Average of 6 new cases per day per 100,000 people.



Number of New Cases Reported^	7-Day Average Number of Daily New Cases Reported	7-Day Average Number of New Daily Cases Reported, Rate per 100,000 Population	Total Number of New Cases per 100,000 Population within last 14 days
<b>4</b>	<b>10</b>	<b>3.1</b>	<b>46.77</b>

Report Date Daily Cases Counts for past 90 Days  
Henrico

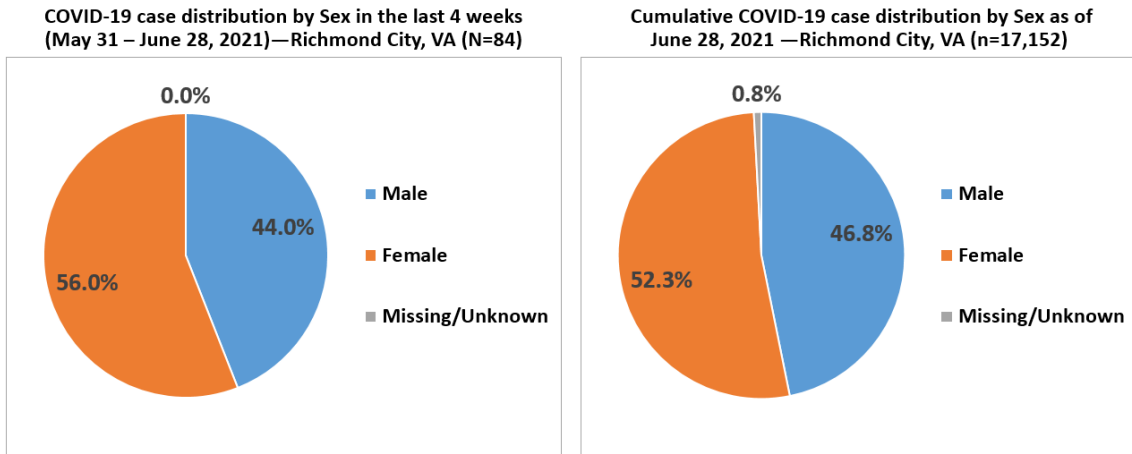
Select Date Range (Affects Bar Chart)  
Past 90 Days



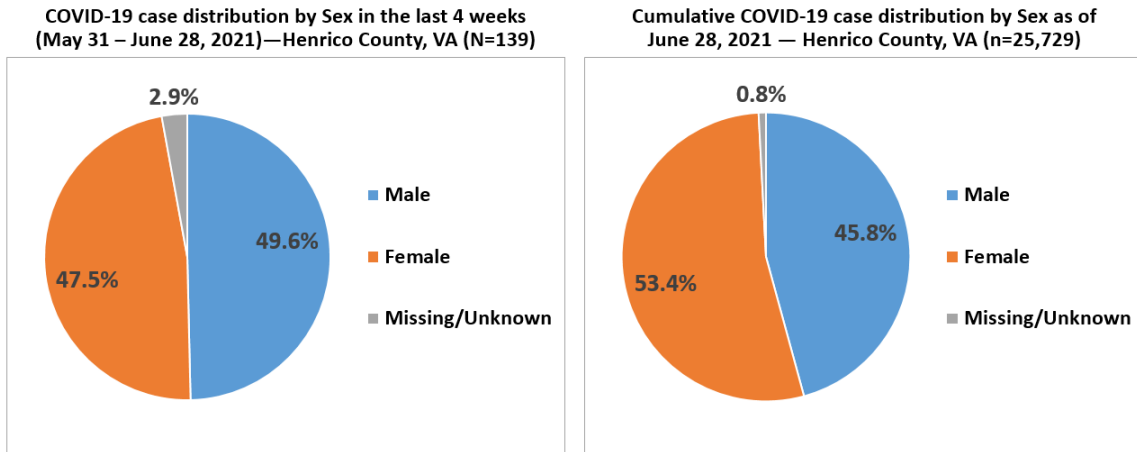
- In Henrico County, cases largely declined over the course of February, March, April and May, and currently cases in Henrico County are following a downward trend, with a recent 7-Day Average of only 4 new cases daily per 100,000 people, despite brief upticks during the last couple of weeks of June.

### 3.3 CASES BY SEX BY COUNTY

All percentages are based on overall case distribution, rather than the proportion of known cases for each measure, and therefore may not correspond directly with VDH percentages.



- In Richmond, females comprise a higher proportion of cases relative to males in the last 4 weeks (56.0% vs 44.0%), along with cumulatively (52.3% vs 46.8%).

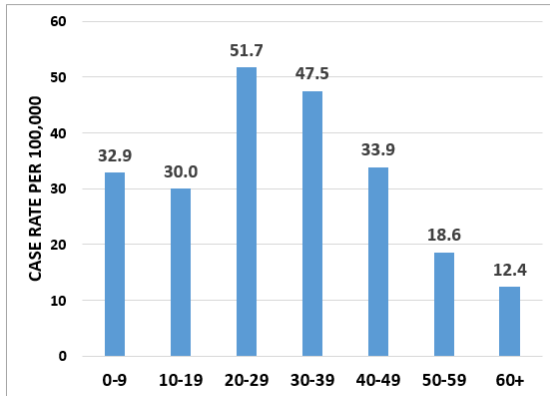


- In Henrico, females comprise a lower proportion of cases relative to males in the last 4 weeks (47.5% vs 49.6%) but a higher proportion cumulatively (53.4% vs 45.8%).

### 3.4 CASES RATES BY AGE GROUP BY COUNTY

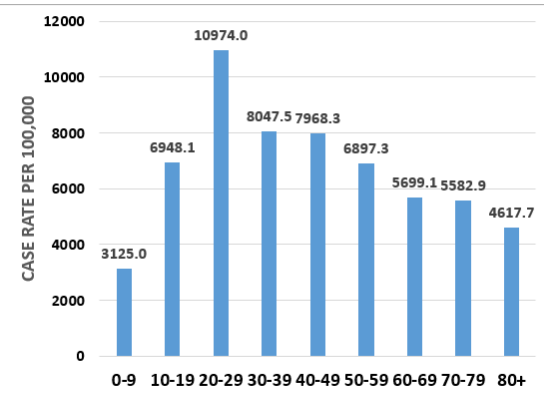
**Note:** The charts below represent rates per 100,000. Population estimates to produce case rates by age group are taken from the National Center for Health Statistics (NCHS) 2019 estimates for Richmond City and Henrico County. In addition, case rates in the last four weeks for individuals 60-69, 70-79, and 80 and over have been combined into 60 and over due to suppressed individual case counts.

COVID-19 case distribution by Age group in last 4 weeks (May 31 – June 28, 2021) – Richmond City, VA (N=84)



\*Age is missing for 8.3% (n=7) of cases

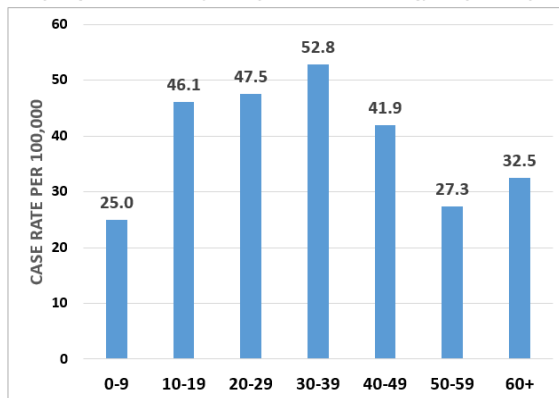
Cumulative COVID-19 case distribution by Age group as of June 28, 2021 – Richmond City, VA (N=17,152)



\*Age is missing for 0.0% (n=82) of cases

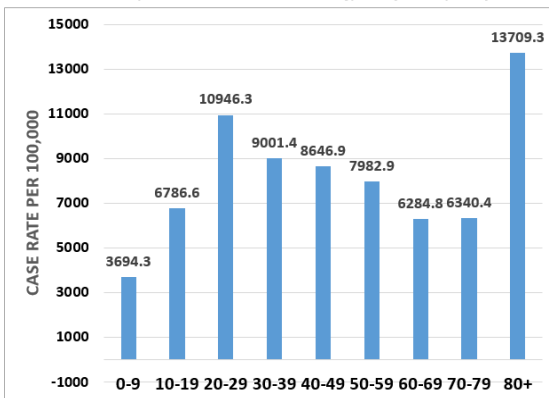
- Individuals aged 20-29 comprise by far the highest case rate cumulatively (10,974.0 per 100,000) but their case rate is closer to individuals aged 30-39 in the last four weeks (51.7 per 100,000 and 47.5 per 100,000, respectively).
- Cases among individuals aged 60 and over make up a smaller proportion of cases in the last four weeks versus cases cumulatively for individuals 60-69, 70-79, and 80 and over.

COVID-19 case distribution by Age group in the last 4 weeks (May 31 – June 28, 2021) – Henrico County, VA (N=139)



\*Age is missing for 8.6% (n=12) of cases

Cumulative COVID-19 case distribution by Age group as of June 28, 2021 – Henrico County, VA (N=25,729)



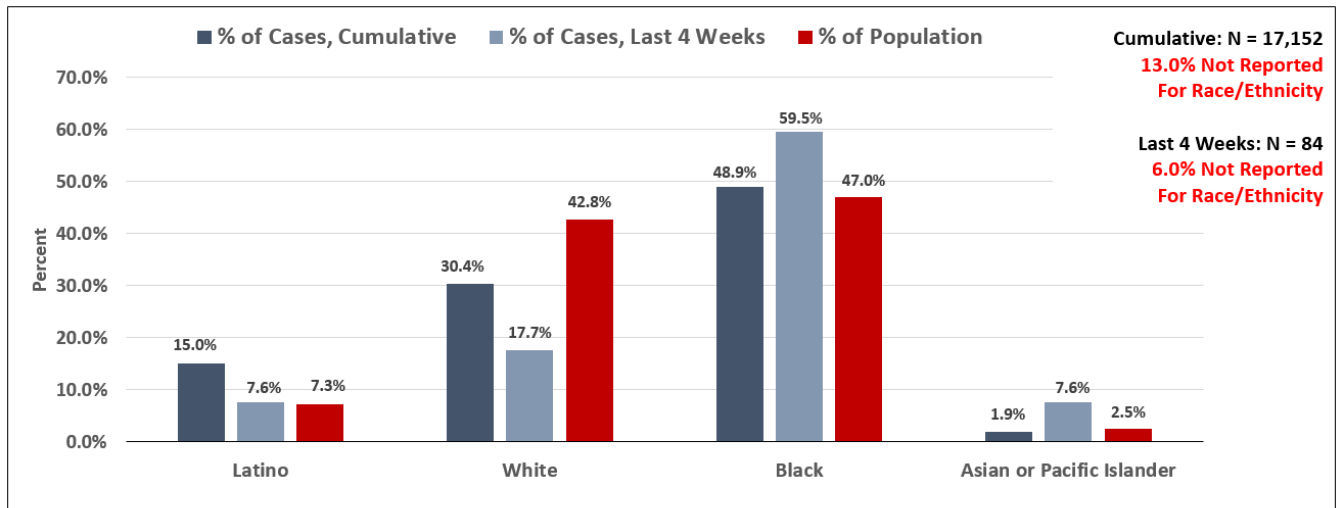
\*Age is missing for 0.6% (n=158) of cases

- In Henrico, individuals aged 30-39, 20-29, and 10-19 represent the highest case rates in the last four weeks (52.8, 47.5, and 46.1 per 100,000, respectively), while individuals aged 80 and over and 20-29 represent the highest case rates cumulatively.
- Case rates for age groups between 10 and 50 are low and relatively uniform in the last four weeks, and there is a noticeable drop-off in case rates for age groups 50 and over and for individuals 0-9.
- Individuals aged 80 and over comprise the highest case rate cumulatively (13,630.5 per 100,000) but individuals 60 and over comprise one of the lower case rates.

### 3.5 CASES AND POPULATION PROPORTIONS BY RACE AND ETHNICITY BY COUNTY

**UPDATE:** Population estimates for race and ethnicity subgroups have been changed for this report from the U.S. Census Bureau’s American Community Survey (ACS) 2019 5-year estimates to the National Center for Health Statistics (NCHS) 2019 estimates to align with estimates used by other VDH metrics. This change also involves new race and ethnicity categories: Latino or Hispanic, Non-Hispanic White, Black or African-American, Asian or Pacific Islander, and Native American.

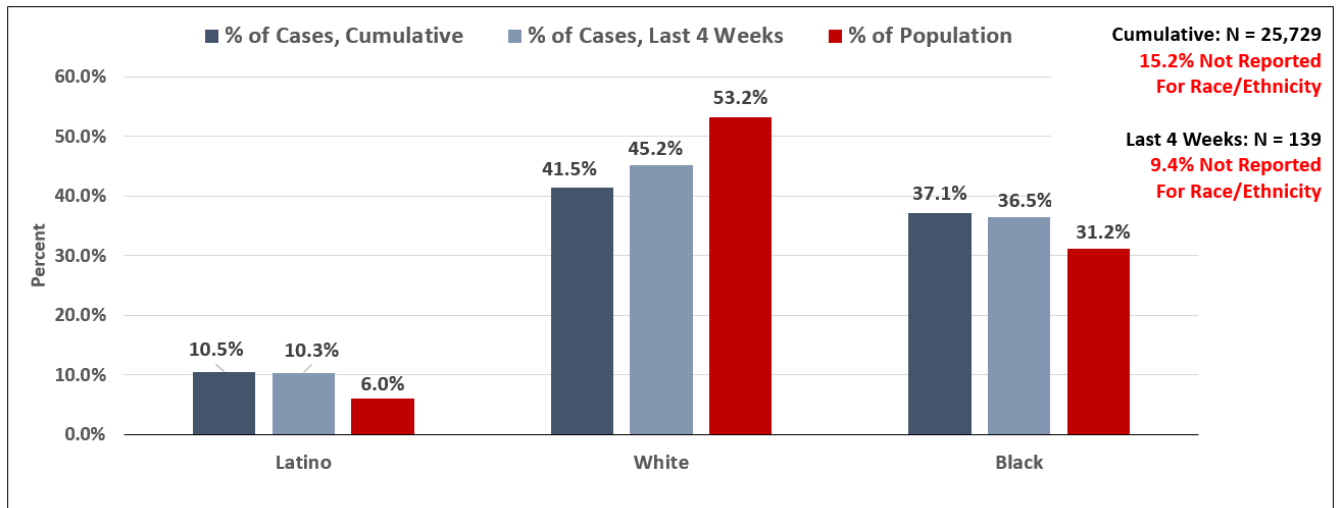
**COVID-19 Case Distribution by Race and Ethnicity in the Last 4 Weeks (May 31 – June 28, 2021) and Cumulatively through June 28, 2021 – Richmond City, VA**



\* NCHS population estimates are not available for Two or More Races (186 total cases) and for Other Race (350 total cases) and thus they are excluded from the plots.  
 \* Missing and Unknown Ethnicities were assumed to be of Non-Hispanic ethnicity.  
 \* Cases among individuals identifying as Native American are suppressed (counts < 5)

- In Richmond, Black individuals in the last 4 weeks represent the highest proportional case burden at 59.5%. Black individuals also comprise the majority of cumulative cases (48.9%) followed by White (30.4%) individuals.
- Cumulatively, Hispanic and Latino individuals comprise a disproportionately high case burden (15.0%) but in the last four weeks make up a smaller proportion of cases (7.3%).
- Not reported cases constitute a notable larger number of cases cumulatively (13.0%) but a smaller proportion in the last four weeks (6.0%).

**COVID-19 Case Distribution by Race and Ethnicity in the Last 4 Weeks (May 31 – June 28, 2021)  
and Cumulatively through June 28, 2021 – Henrico County, VA**



\* NCHS population estimates are not available for Two or More Races (314 total cases) and for Other Race (748 total cases) and thus they are excluded from the plots.  
 \* Missing and Unknown Ethnicities were assumed to be of Non-Hispanic ethnicity.  
 \* Cases among individuals identifying as Asian or Pacific Islander or Native American are suppressed (counts < 5)

- In Henrico, Black individuals represent a disproportionately high case burden in the last four weeks (36.5%) and cumulatively (37.1%) relative to their population (31.2%)
- White individuals comprise the majority of cumulative cases (41.5%) followed by Black individuals.
- Hispanic and Latino individuals comprise a disproportionate case burden both in the last four weeks (10.3%) and cumulatively (10.5%).
- Not reported cases constitute a notable number of cases cumulatively (15.1%) but a smaller proportion in the last four weeks (9.4%).

## 4.0 COVID-19 HOSPITALIZATIONS

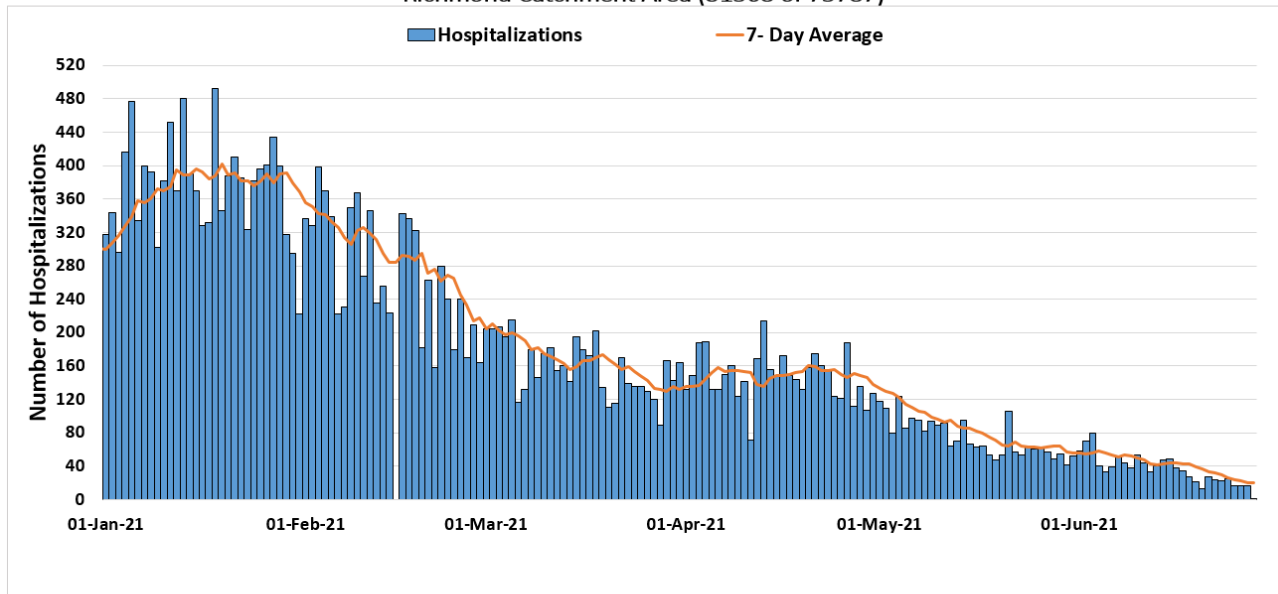
### 4.1 SUMMARY OF HOSPITALIZATIONS

After an overall decline, hospitalizations have plateaued with a 7-day average of less than 1 admission per day in Richmond and around 1 admission per day in Henrico, based on VEDSS data (see [VDH Dashboard](#) for additional trend data). Looking more broadly at the 11 hospitals that comprise the Richmond catchment area, hospitalizations, ICU hospitalizations and ventilator utilizations have continued to decline throughout the month of May. All 11 hospitals are currently operating at a normal clinical status.

Regarding hospitalization demographics, cumulative hospitalizations are highest among females and Black individuals in both districts. The median age of hospitalization has not changed since last month and is still 61 in Richmond and 67 in Henrico.

### 4.2 HOSPITALIZATIONS (CONFIRMED AND PENDING) BY DAY IN THE RICHMOND CATCHMENT AREA AS OF JUNE 27, 2021

Total Daily COVID-19 Hospitalizations, January 1, 2021 – June 27, 2021  
Richmond Catchment Area (31568 of 75787)



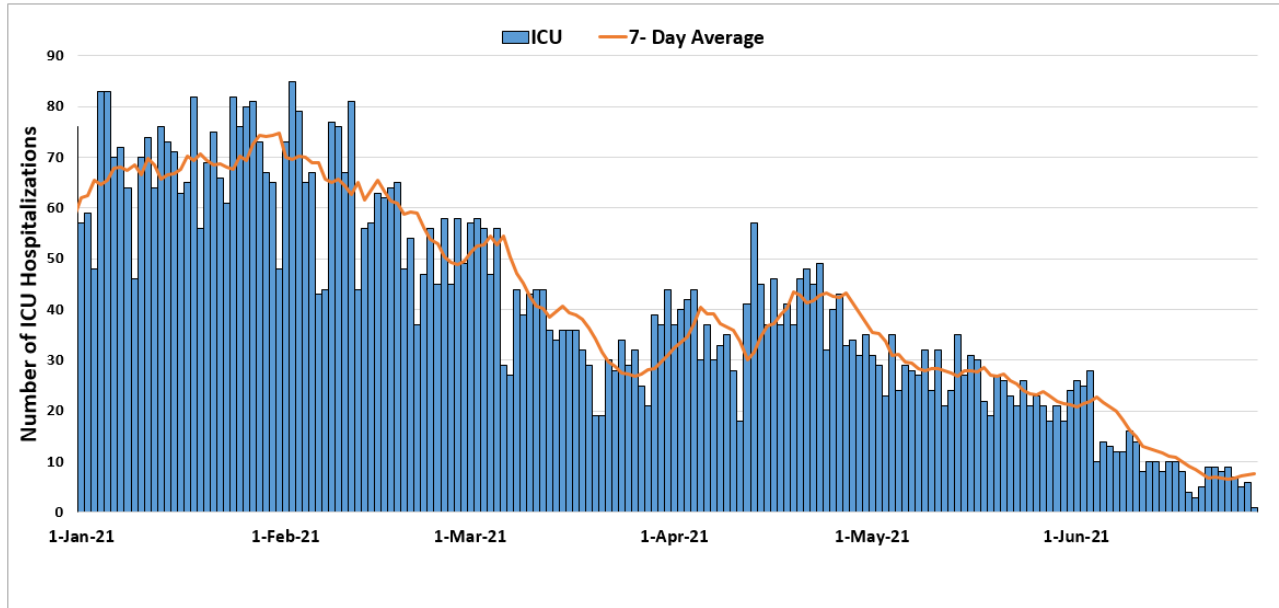
\* Data points from March until December 31, 2020 are excluded to allow for clarity in trends/patterns

\* Data points from February 15<sup>th</sup>, 2021 were omitted due to issues with data quality

- Data from the 11 hospitals included in this analysis has shown an overall downward trend since a peak in January. This downward trend has been consistent, despite minor fluctuations throughout April and May.

#### 4.3 ICU HOSPITALIZATIONS (CONFIRMED AND PENDING) BY DAY IN THE RICHMOND CATCHMENT AREA AS OF JUNE, 27 2021

Total Daily COVID-19 ICU Hospitalizations, January 1, 2021 – June 27, 2021  
Richmond Catchment Area (18443 of 6893)

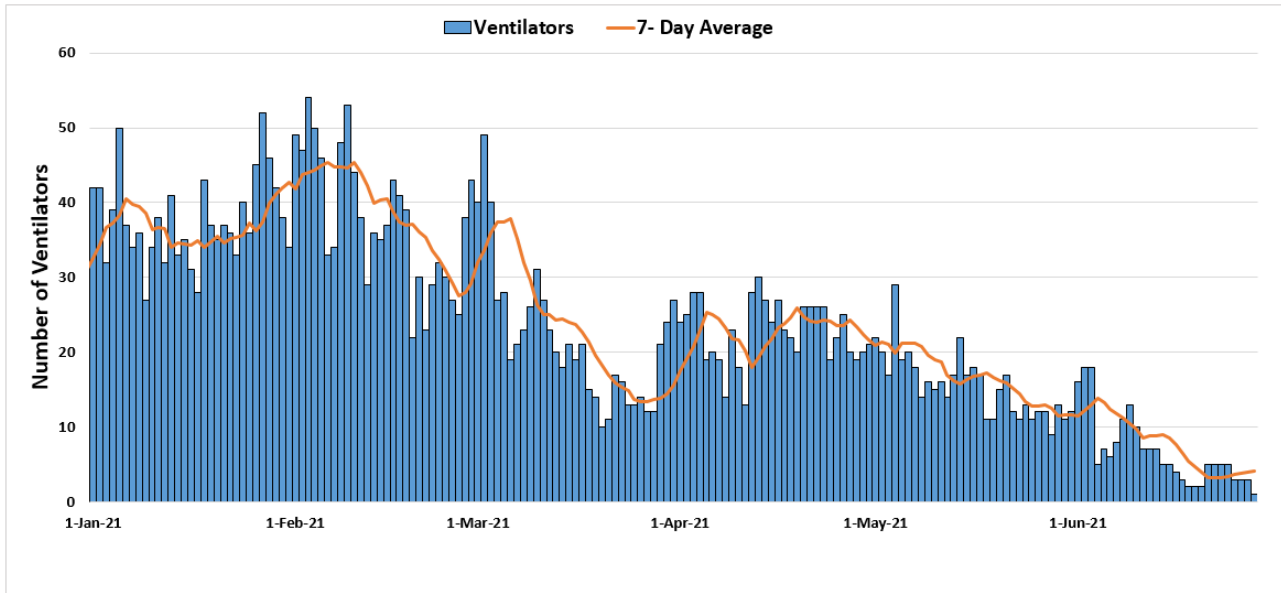


\* Data points from March until December 31, 2020 are excluded to allow for clarity in trends/patterns

- Following a peak and mild fluctuations during the months of May and June, ICU hospitalizations have generally been decreasing.

#### 4.4 VENTILATOR UTILIZATIONS (PATIENTS ON VENTILATORS) BY DAY IN RICHMOND CATCHMENT AREA AS OF JUNE 27, 2021

Total Daily COVID-19 Ventilator Utilizations, January 1, 2021 – June 27, 2021  
Richmond Catchment Area (4241 of 9366)



\* Data points from March until December 31, 2020 are excluded to allow for clarity in trends/patterns

- Ventilator utilization showed major fluctuations throughout the months of April and May. During the month of June ventilator utilizations appeared to have mild fluctuations but overall followed a downward trend.

#### 4.5 HOSPITALIZATIONS BY SEX, RACE, AND AGE BY COUNTY

*The minimum age ranges correspond to ages in months, which have been converted to years.*

CONFIRMED AND PROBABLE	RICHMOND (n= 828)	HENRICO (n= 1112)
<b>Gender</b>		
Male	395	524
Female	433	588
Missing		
<b>Median Age (range)</b>	61 (0.2 - 96)	67 (0.1 - 104)
<b>Race</b>		
White	118	434
Black	536	503
Latino	143	81
Asian or Pacific Islander	7	32
Other race	9	37
Two or more races	*	13
Not reported	10	9

Women comprise a majority of hospitalizations in both Richmond and Henrico. In Richmond, Black individuals comprise the majority of hospitalizations, which is also the case in Richmond. The median age of hospitalization for Richmond and Henrico is sixty-one and sixty-seven, respectively.



## 5.0 COVID-19 FATALITIES

### 5.1 SUMMARY OF FATALITIES

After fluctuations in March, there have been minimal COVID-19 deaths in April through June in Richmond and Henrico. (see [VDH Dashboard](#) for additional trend data). Cumulatively, deaths are highest among male individuals and Black individuals in Richmond and highest among female individuals and White individuals in Henrico. The median age of death has not changed in recent months and is 77 in Richmond and 80 in Henrico.

### 5.2 DEATHS BY SEX, RACE, AND AGE BY COUNTY

CONFIRMED AND PROBABLE	RICHMOND (n= 259)	HENRICO (n= 605)
<b>Gender</b>		
Male	137	287
Female	134	348
Not reported	0	0
<b>Median Age (range)</b>	77 (30 - 98)	80 (21 - 106)
<b>Race</b>		
White	89	347
Black	161	237
Latino	14	26
Asian or Pacific Islander	*	18
Other race	*	-
Two or more races	-	-
Not reported	*	5

\* Counts <5 have been suppressed.

## 6.0 VACCINATION

### 6.1 VACCINE SUMMARY

Richmond and Henrico Health Districts are in Phase 2 of vaccination. Anyone 12 or older is now eligible to receive the vaccine. Vaccine supply and distribution are summarized in the tables below. As of June 27, 2021, 54.3% of the region’s population aged 18 and over has received at least one dose of the vaccine, and 47.1% of the region’s total 18+ population has been fully vaccinated. For Richmond and Henrico’s combined population, 53.4% have received at least one dose, while 46.1% of the two districts combined population has been fully vaccinated.

The majority of vaccine recipients in Richmond City have been female and people 70-79, while the majority in Henrico County have been female and people over 65 years old. Available data indicate that eligible White individuals have received the majority of the vaccine. In this internal report, we have also included maps of vaccination uptake relative to case burden and social vulnerability (section 8.7).

### 6.2 PERCENTAGE OF VACCINATION GOALS REACHED BY POPULATION

		POPULATION	POPULATION GOAL (75%)	PEOPLE WITH AT LEAST ONE DOSE	PEOPLE FULLY VACCINATED
Richmond	12-17	11,150	8,363	3,658 (32.8%)	2,568 (23.0%)
	<b>18+</b>	<b>190,750</b>	<b>143,063</b>	<b>103,531 (54.3%)</b>	<b>89,932 (47.1%)</b>
	65+	31,809	23,857	23,658 (74.4%)	21,032 (66.1%)
Henrico	12-17	25,954	19,466	12,633 (48.7%)	8,945 (34.5%)
	<b>18+</b>	<b>256,660</b>	<b>192,495</b>	<b>179,660 (70.0%)</b>	<b>156,823 (61.1%)</b>
	65+	52,720	39,540	45,956 (87.2%)	41,309(78.4%)

Population totals are based on 2019 data from the National Center for Health Statistics (NCHS). Please note - this is a change from previous reports which used Census data to estimate population by age group.

Nationally, the Biden administration is using the **percentage of adults (individuals 18 and over)** to track progress in vaccination.

Though the percentage of the population needed to reach herd immunity is still uncertain, in line with federal guidance, we have set an overall goal of vaccinating 70% of the population. First and second doses of the Pfizer vaccine must be administered at least 21 days apart. First and second doses of the Moderna vaccine must be administered at least 28 days apart. People who received the Johnson & Johnson vaccine, which is a single dose, are included in the count of first doses administered.



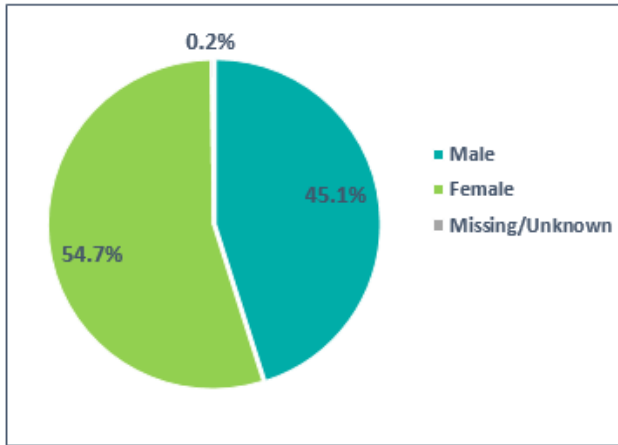
6.3 VACCINATIONS BY LOCALITY AS OF MAY 31, 2021 - SOURCE: [VDH.VIRGINIA.GOV](http://VDH.VIRGINIA.GOV)

HEALTH DISTRICT	LOCALITY	TOTAL POPULATION	FIRST DOSES ADMINISTERED	SECOND DOSES ADMINISTERED
Chesterfield	Chesterfield	352,802	193,323	165,351
	Colonial Heights	17,370	8,047	6,717
	Powhatan	29,652	14,309	12,554
Chickahominy	Charles City	6,963	3,629	3,367
	Goochland	23,753	15,088	13,761
	Hanover	107,766	62,790	56,671
	New Kent	23,091	11,412	10,228
Henrico	Henrico	330,818	192,571	165,999
Richmond	Richmond City	230,436	107,318	92,648
<b>Total</b>		<b>1,122,651</b>	<b>608,487</b>	<b>527,296</b>

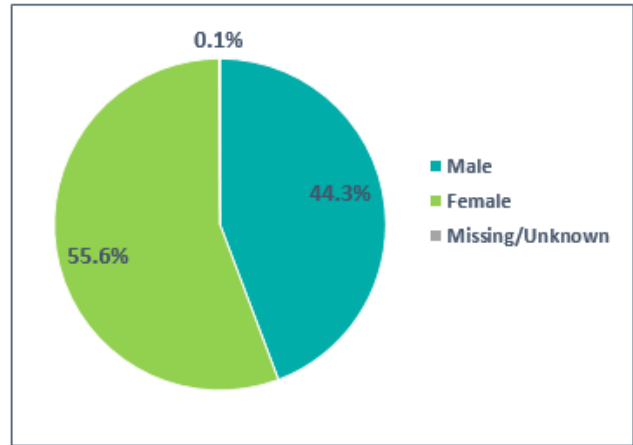
Population totals are based on 2019 data from the National Center for Health Statistics (NCHS). Please note - this is a change from previous reports which used Census data to estimate population by age group.

6.4 VACCINE DISTRIBUTION BY DEMOGRAPHIC SUBGROUP - SOURCE: VIIS

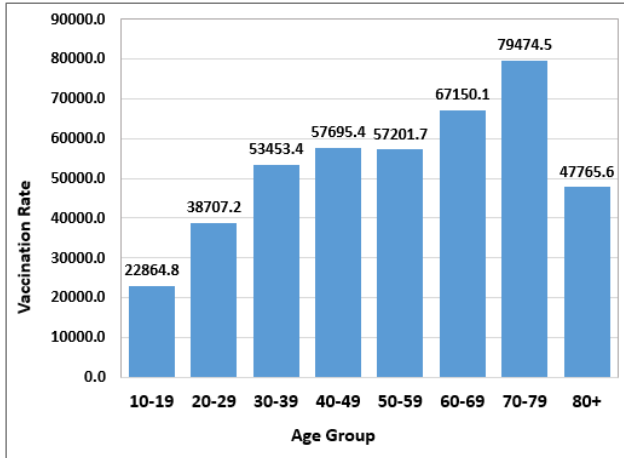
**Total Vaccine Recipients by Sex in Richmond**  
-- June 28th, 2021 (N = 105,829)



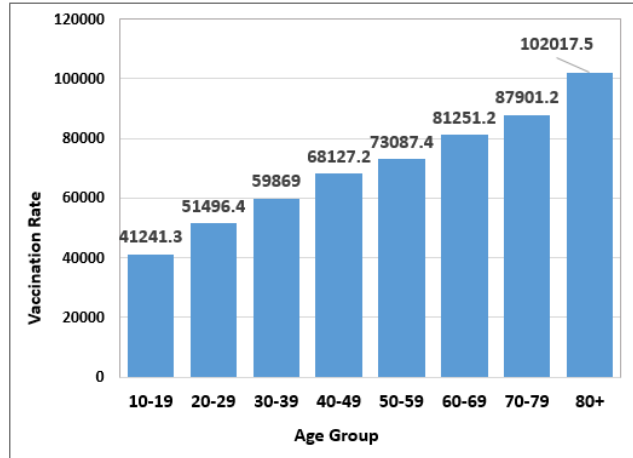
**Total Vaccine Recipients by Sex in Henrico**  
-- June 28th, 2021 (N = 189,461)



**Vaccination Uptake Counts by Age Group in Richmond**  
- June 28<sup>th</sup>, 2021 (N = 105,829)



**Vaccination Uptake Counts by Age Group in Henrico**  
- June 28<sup>th</sup>, 2021 (N = 189,461)

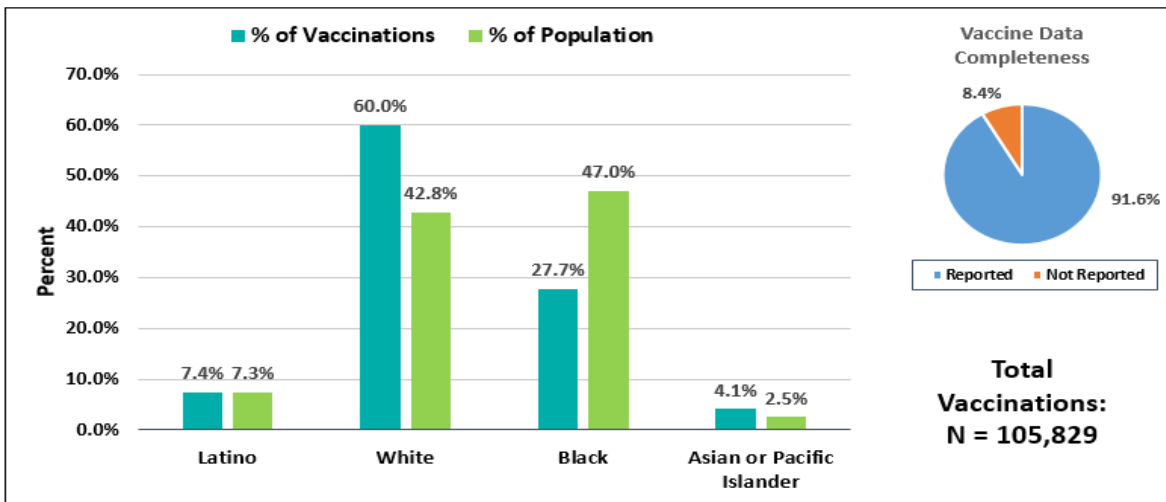


\* In Henrico, individuals aged 80 years and older have a vaccination rate of 102,017.5 per 100,000 individuals, which likely implies a population estimate for that specific age group which is an underrepresentation of the 'true' population value.

**UPDATE:** Population estimates for race and ethnicity subgroups have been changed for this report from the U.S. Census Bureau's American Community Survey (ACS) 2019 5-year estimates to the National Center for Health Statistics (NCHS) 2019 estimates to align with estimates used by other VDH metrics. This change also involves new race and ethnicity categories: Latino or Hispanic, Non-Hispanic White, Black or African-American, Asian or Pacific Islander, and Native American. Racial groups such as Two or more Races and Other Race have been excluded from the following metrics as they are without corresponding NCHS estimates, but the counts for these groups can be seen in the footnotes immediately below.

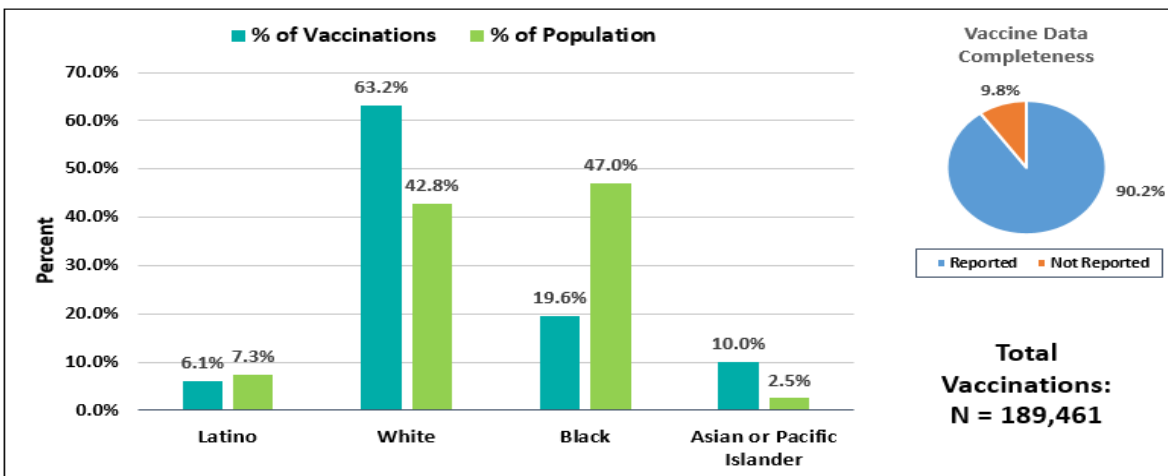
The charts below compare the percentage breakdown of racial or ethnic identification of vaccinated individuals to the expected percentage breakdown of the racial or ethnic identification of the population. A notable discrepancy can be seen when looking at Black individuals, who comprise 47% of the Richmond population and 31.2% of the Henrico population yet only 27.7% of vaccine recipients in Richmond and 19.6% of vaccine recipients in Henrico.

**Vaccine Recipients vs. Population by Race/Ethnicity Percentages in Richmond – as of June 28<sup>th</sup>, 2021**



\*For race/ethnicity of vaccine recipients, "Not Reported" comprises 8.4% (n=8,882).  
 \*Missing and Unknown Ethnicities were assumed to be of Non-Hispanic ethnicity.

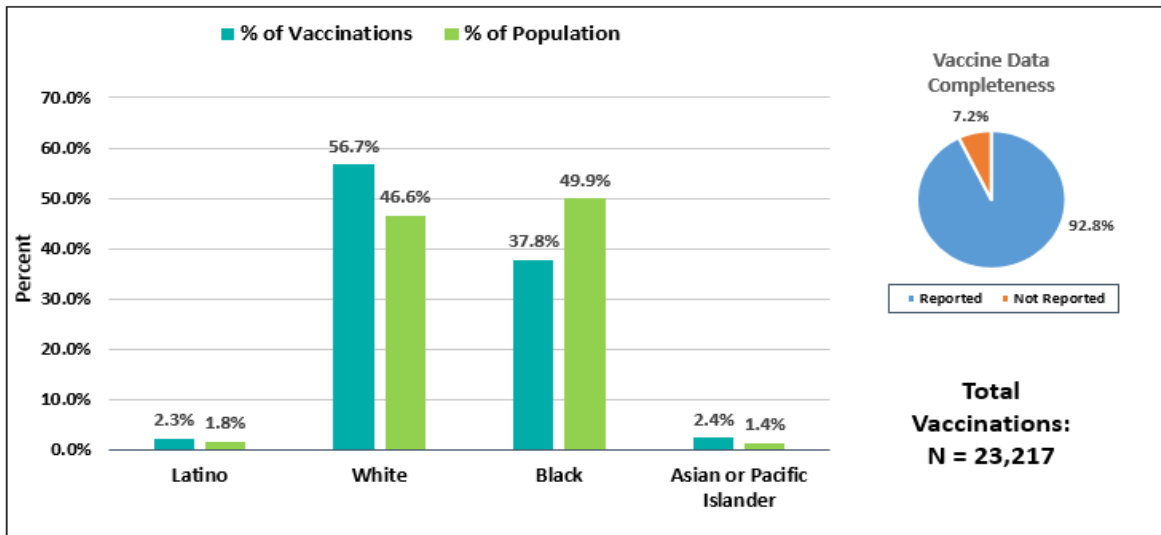
**Vaccine Recipients vs. Population by Race/Ethnicity Percentages in Henrico – as of June 28<sup>th</sup>, 2021**



\*For race/ethnicity of vaccine recipients, "Not Reported" comprises 9.8% (n=18,619).  
 \*Missing and Unknown Ethnicities were assumed to be of Non-Hispanic ethnicity.

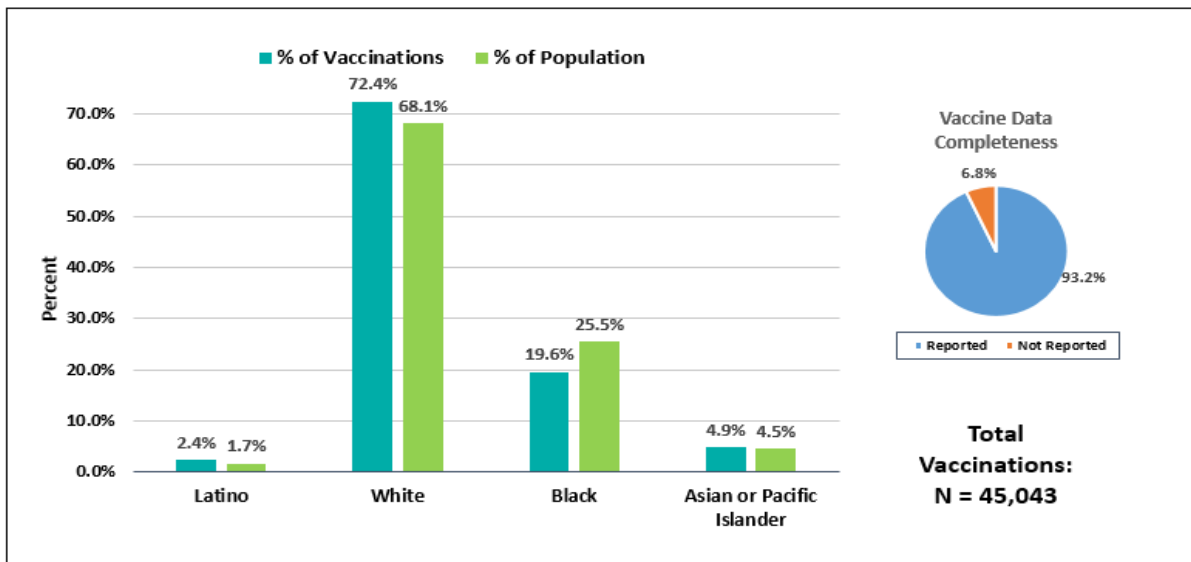
The figures below compare the percentage breakdown by race and ethnicity specifically for individuals 65 and over. In Richmond City, Black individuals comprise 49.9% of the population of those aged 65 years and older, yet make up only 37.8% of vaccine recipients. This discrepancy can also be noted in Henrico, where Black individuals make up 25.5% of the population, yet thus far have only comprised 19.6% of vaccine recipients.

### Vaccine Recipients vs. Population by Race/Ethnicity Percentages in Richmond 65+ -- as of June 28<sup>th</sup>, 2021



\*For race/ethnicity of vaccine recipients, "Not Reported" comprises 7.2% (n=1,667).  
 \*Missing and Unknown Ethnicities were assumed to be of Non-Hispanic ethnicity.

### Vaccine Recipients vs. Population by Race/Ethnicity Percentages in Henrico 65+ – as of June 28<sup>th</sup>, 2021



\*For race/ethnicity of vaccine recipients, "Not Reported" comprises 6.8% (n=3,043).  
 \*Missing and Unknown Ethnicities were assumed to be of Non-Hispanic ethnicity.