

WEEKLY COVID-19 REPORT FOR EXTERNAL USE

MON JULY 5 - MON JULY 12, 2021

CONTENTS

KEY TAKEAWAYS	2
1.0 COVID-19 SNAP SHOT	4
1.1 TOTAL TESTS AND PERCENT POSITIVITY BY MODALITY IN RICHMOND AND HENRICO	4
1.2 CONFIRMED CASES, HOSPITALIZATIONS, FATALITIES, AND PROBABLE CASES BY COUNTY	4
1.3 CURRENT COVID-19 HOSPITALIZATIONS IN THE RICHMOND CATCHMENT AREA ON JULY 12, 2021	5
2.0 COVID-19 CASES	5
2.1 SUMMARY OF CASES	5
2.2 CASE REPORTING TRENDS BY DATE (SOURCE-VDH WEBSITE)	6
2.3 CASES BY SEX BY COUNTY	9
2.5 CASES AND POPULATION PROPORTIONS BY RACE AND ETHNICITY BY COUNTY	11
3.0 HOSPITALIZATIONS & FATALITIES	12
3.1 SUMMARY OF HOSPITALIZATIONS & FATALITIES	12
3.2 COVID-19 HOSPITALIZATIONS, ICU HOSPITALIZATIONS, & VENTILATOR UTILIZATIONS IN THE RICHMOND CATCHMENT AREA	13
4.0 VACCINATION	14
4.1 VACCINE SUMMARY	14
4.2 PERCENTAGE OF VACCINATION GOALS REACHED BY POPULATION	14
4.3 VACCINATIONS BY LOCALITY AS OF JULY 12, 2021 - SOURCE: VDH.VIRGINIA.GOV	15
4.4 VACCINE DISTRIBUTION BY DEMOGRAPHIC SUBGROUP	16

KEY TAKEAWAYS

CASES

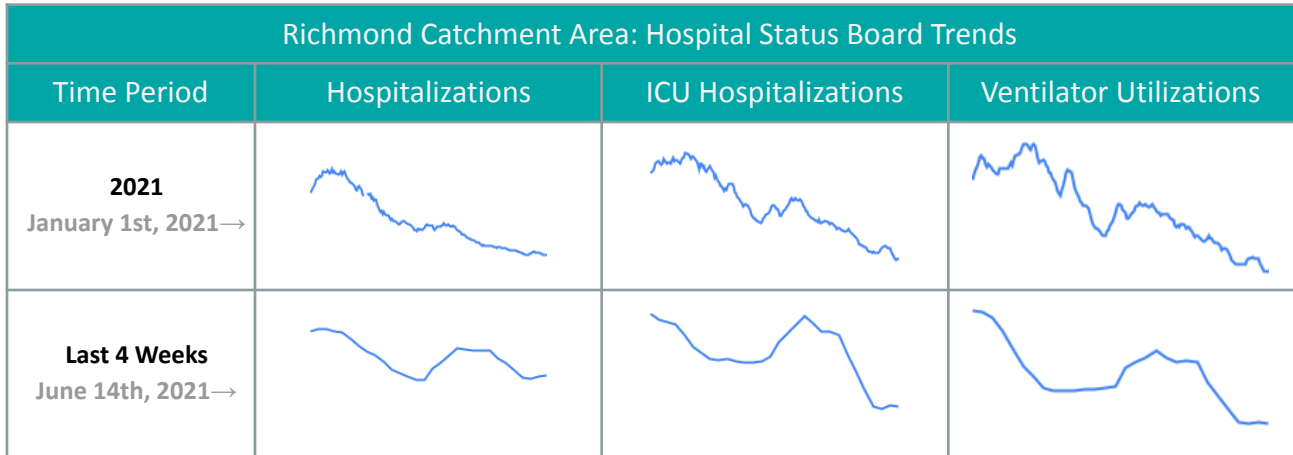
Cases in both districts remain low, with a **7-day average** of 12.8 new cases per day, per 100,000 population in Richmond and 1.2 new cases per day, per 100,000 population in Henrico..

Richmond City & Henrico County	
Demographic	Highest Proportion
Age	20-29 Year Olds
Sex	Females
Race	Black

HOSPITALIZATIONS & FATALITIES

Hospitalizations based on date of admission among Richmond residents are fluctuating, but are for the most part low and stable with a 7-Day average of about 1 new hospitalization reported per day. There have been **0 fatalities** in Richmond since the start of June.

In Henrico, **hospitalizations** are low and stable, with the last recorded date of admission falling during the week of June 29. **Deaths** in Henrico are also low and stable, with the last date of death being recorded *Hospitalizations & Deaths by subgroup (sex, age, and race) are reported on a monthly basis. Data may be impacted by a lag in reporting.*



**11 out of 11 hospitals in the Richmond Catchment Area are operating at a 'Normal' clinical status.*

VACCINATIONS

Richmond and Henrico Health Districts are in Phase 2 of vaccination; anyone 12 or older is eligible to receive a vaccine. Local health departments currently appear to be administering the largest percentage of vaccines to Richmond and Henrico residents, compared with other providers.

Local Vaccination Stats & Regional Comparison		
Location	≥ 1 Dose	Complete
Richmond City & Henrico County	53.9%	47.5%
Region	54.6%	48.4%

Vaccination Demographic Trends		
Demographic	Richmond City	Henrico County
Age Groups ≥ 70% Vaccinated	65+	50+
Sex	Female	
Race	White	

In both Richmond and Henrico, older age groups have consistently been vaccinated at a higher rate than younger age groups. Page 33 includes an estimated breakdown of vaccination uptake by race and age subgroups.

1.0 COVID-19 SNAP SHOT

1.1 TOTAL TESTS AND PERCENT POSITIVITY BY MODALITY IN RICHMOND AND HENRICO

Total tests by testing modality and the associated 7-day average in percent positivity are summarized in the table below. Data are from the [VDH public dashboard](#) on July 12, 2021.

	RICHMOND CITY		HENRICO COUNTY	
	Tests	Positivity	Tests	Positivity
PCR*	263,290	2.9%	399,743	2.0%
Antigen	54,298	1.7%	107,006	5.1%
Total (PCR, antigen, and antibody)	322,209	2.5%	516,360	3.5%

1.2 CONFIRMED CASES, HOSPITALIZATIONS, FATALITIES, AND PROBABLE CASES BY COUNTY

CASE STATUS	RICHMOND CITY	HENRICO COUNTY	VIRGINIA
New cases this week (July 12)	214	-56	1530
All cases	17239	25995	682856
Confirmed cases	14157	19155	531009
Hospitalizations	819	1071	29210
Deaths	235	570	9665
Probable cases	3082	6840	151847
Hospitalizations	21	49	1591
Deaths	38	70	1785
Case rate per 100,000	7481	7857.8	8000.2

Weekly cases added are estimated as the difference between the cases recorded from the current and prior week

*Case Rate per 100,000=(confirmed+probable)/population count *100,000.*

Population estimates for the case rate are from 2019 data compiled by the National Center for Health Statistics (NCHS).

1.3 CURRENT COVID-19 HOSPITALIZATIONS IN THE RICHMOND CATCHMENT AREA ON JULY 12, 2021

The data included in this section comes from VHASS and it includes data from the following hospitals: VCU Health System, Retreat Doctors', Bon Secours Community, CWJ Chippenham, CWJ Johnson Willis, VA Medical Center, Bon Secours St. Mary's, Henrico Doctors, and Parham Doctors, Bon Secours St. Francis, and Memorial Regional Medical Center.

	TOTAL IN USE FOR COVID-19	CURRENTLY AVAILABLE
Confirmed Hospitalizations	26	248
Pending Hospitalizations	5	
Confirmed - ICU	7	69
Pending - ICU	*	
Confirmed - Ventilators	*	301
Pending - Ventilators	*	

Within these 11 hospitals that comprise the Richmond catchment area, there are currently 248 total available hospital beds, 69 available adult ICU beds, and 301 available ventilators. Based on the VHASS hospital dashboard on July 12, 2021, all 11 hospitals in the Richmond Catchment area are operating at normal clinical status.

**A clinical status of “normal” indicates that hospital clinical resources are operating within normal conditions. A clinical status of “full” indicates that hospital clinical resources are exceeded and acceptable care cannot be provided to additional patients. Diversion or Community surge response is required.

2.0 COVID-19 CASES

2.1 SUMMARY OF CASES

Cases

Cases in both districts continue to decline, with a 7-day average of 12.8 new cases per day, per 100,000 population in Richmond and 1.2 new cases per day, per 100,000 population in Henrico.

In both districts, females comprise a higher proportion of cases and 20-29 year olds continue to lead case counts. Regarding race and ethnicity, the highest proportion of cases in both districts is still among Black individuals. Additionally, in Henrico, the percentage of cases among the Latino population is disproportionately high as compared to their population percentage.

2.2 CASE REPORTING TRENDS BY DATE (SOURCE=VDH WEBSITE)

*** Disclaimer ***

In recent weeks, case investigators have made significant efforts to reallocate past cases to appropriate localities (e.g. a case originally listed in Richmond City might be moved to Henrico County, Chesterfield County, etc.). This has led to sometimes significant discrepancies between reported cases and actual new cases. The report date and its count corresponds to the date the case count was reported publicly (or reallocated publicly). The report date does not have any equivalent variable in VEDSS and cannot be directly linked to case-specific dates (e.g. event dates or lab report dates).

*Case counts by report date are estimated by subtracting the cumulative cases on the previous day from that of the current day. If the number of cases reallocated to another locality on a day is higher than the cases added for that day (either as new cases or via reallocation), a **negative** count will be displayed. Meanwhile, if the number of cases reallocated to a specific locality is a high number on a given day, reported cases counts can be noticeably **inflated** for that day beyond the actual case counts. The table below clarifies the weekly total deviation of actual new case counts from the reported counts.*

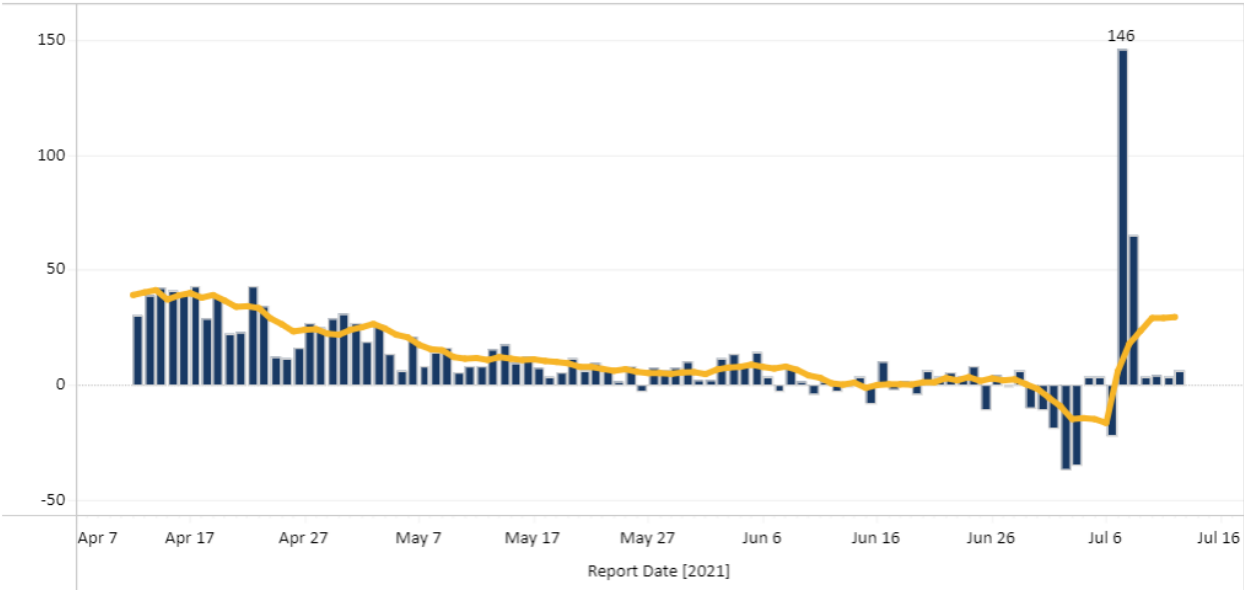
WEEK	DEVIATION OF ACTUAL NEW CASE COUNTS FROM REPORTED COUNTS	
	Richmond	Henrico
June 14 to June 20	26-50 lower count than reported	0-25 lower count than reported
June 21 to June 27	1-25 higher count than reported	0-25 lower count than reported
June 28 to July 4	126-150 higher count than reported	151-175 lower count than reported
July 5 to July 11	151-175 lower count than reported	51-75 higher count than reported

*While the table reports the **weekly** total discrepancy between the actual new case count and the reported case count, the plots below display the **daily** reported case count. The corresponding 7-day moving average is a recurrent average of the reported case count for each 7-day data sequence.*

Number of New Cases Reported [^]	7-Day Average Number of Daily New Cases Reported	7-Day Average Number of New Daily Cases Reported, Rate per 100,000 Population	Total Number of New Cases per 100,000 Population within last 14 days
6	29	12.8	43.27

Report Date Daily Cases Counts for past 90 Days
Richmond City

Select Date Range (Affects Bar Chart)
Past 90 Days

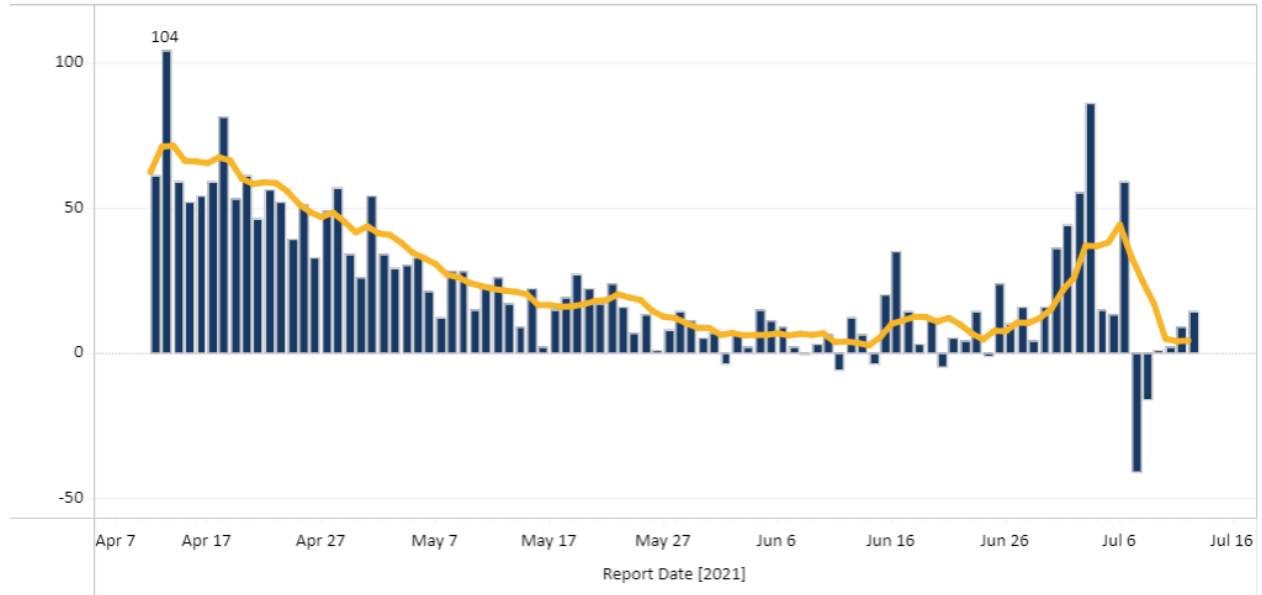


- In Richmond, the number of daily new cases reported is heavily influenced recently by cases being reallocated to different localities. The daily plot trends should be compared with the weekly corrections reported in the table above.
- For the week of June 28 to July 4, we see a collection of daily “negative” case counts as older cases reallocated to other localities outnumbered actual new cases over those days. From the table above we can see the new case count was between 126 and 150 higher than the reported negative count, indicating that actual new cases each day were small positive counts.
- For the week of July 5 to July 11, we see a massive spike in reported cases, but this can be mostly explained by older cases being reallocated to the Richmond locality rather than actual new cases occurring, with between 151 and 175 fewer new cases than the reported counts.

Number of New Cases Reported [^]	7-Day Average Number of Daily New Cases Reported	7-Day Average Number of New Daily Cases Reported, Rate per 100,000 Population	Total Number of New Cases per 100,000 Population within last 14 days
14	4	1.2	88.99

Report Date Daily Cases Counts for past 90 Days
Henrico

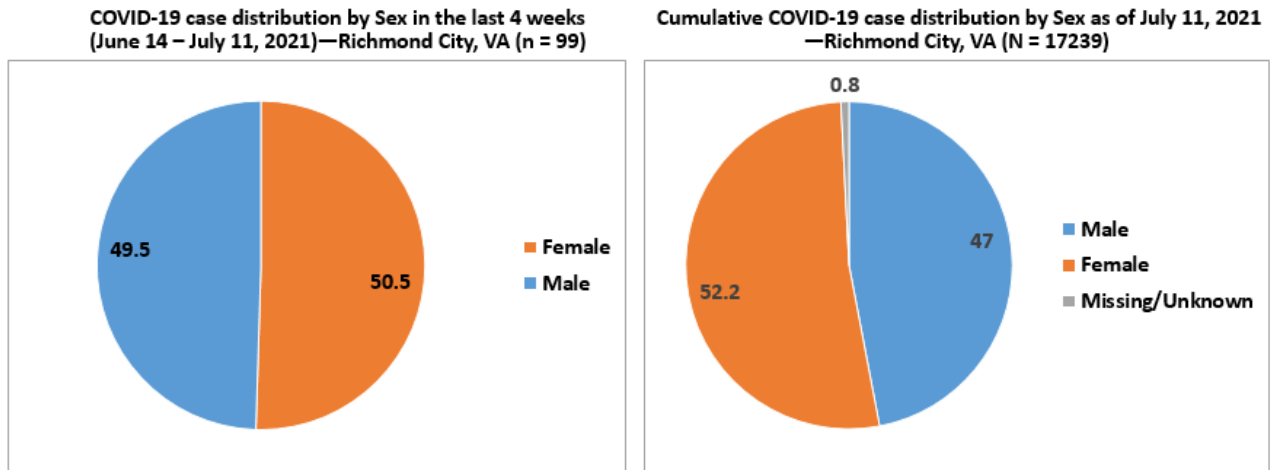
Select Date Range (Affects Bar Chart)
Past 90 Days



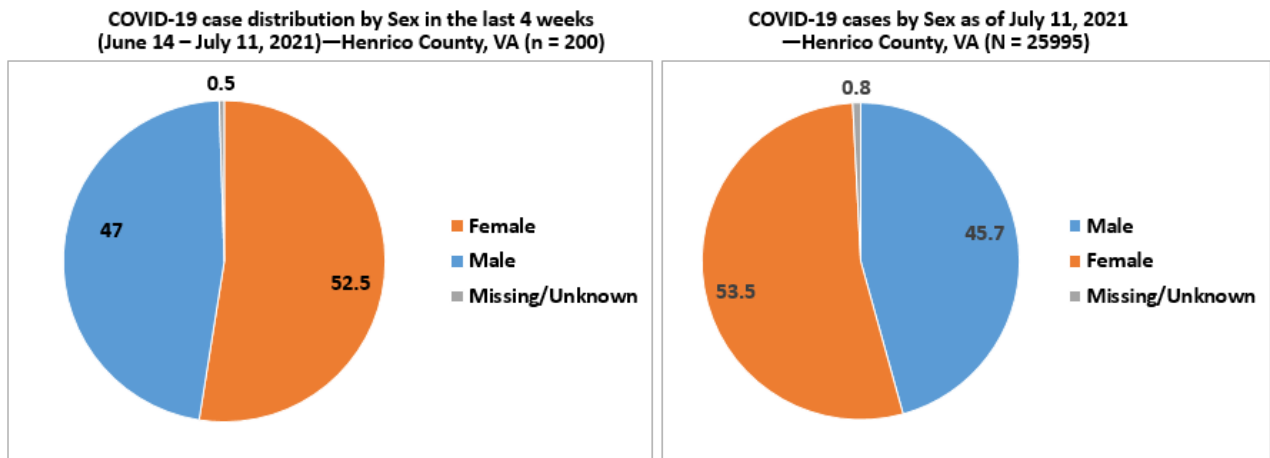
- In Henrico, the number of new cases reported per day is also fluctuating due to recent efforts to reallocate older cases to appropriate localities. The plot trends should be compared with the weekly corrections reported in the table above.
- Recent large spikes in reported cases can be seen for the week of June 28 to July 4, but there were between 151 and 175 *fewer* actual new cases that week than the reported counts.
- In the week of July 5 to July 11, a large negative spike and a smaller negative spike together can mostly be explained by the fact that the new case count was between 51 and 75 higher than the reported case count.

2.3 CASES BY SEX BY COUNTY

All percentages are based on overall case distribution, rather than the proportion of known cases for each measure, and therefore may not correspond directly with VDH percentages.



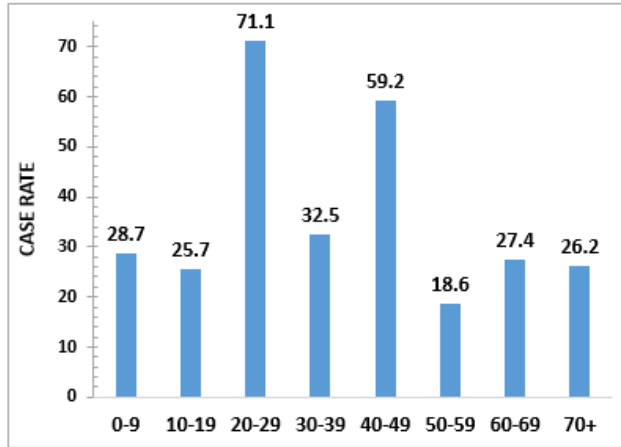
- In Richmond City, over the last four weeks, females have comprised a narrow majority of cases (50.5%) when compared to males (49.5%). Sex data has been deemed ‘Missing/Unknown’ over the last four weeks.



- In Henrico, over the last four weeks, females have comprised 52.5% of cases, whereas males have comprised 47% of cases.

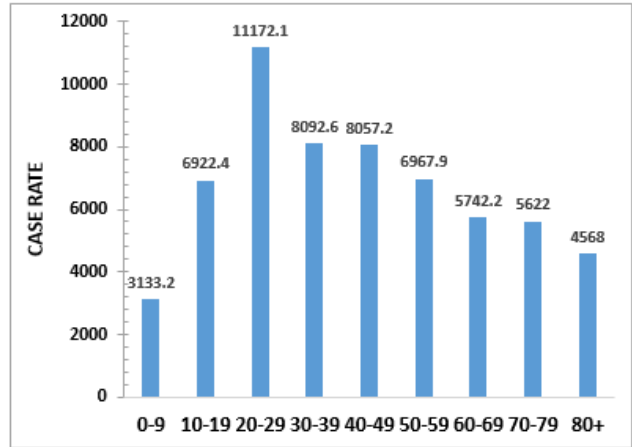
2.4 CASES BY AGE GROUP BY COUNTY

COVID-19 Case Rates by Age group in the last 4 weeks (June 14– July 11, 2021)—Richmond City, VA (n = 91)



Age is missing for 8.08% (n=8) cases

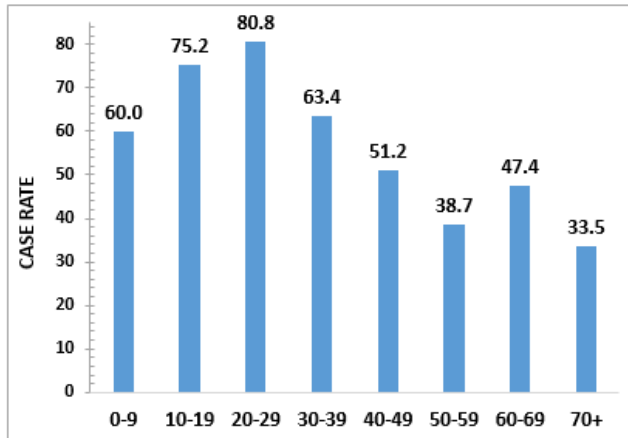
Cumulative COVID-19 Case Rates by Age group as of July 11, 2021 —Richmond City, VA (N = 17227)



Age is missing for 0.07% (n=12) cases

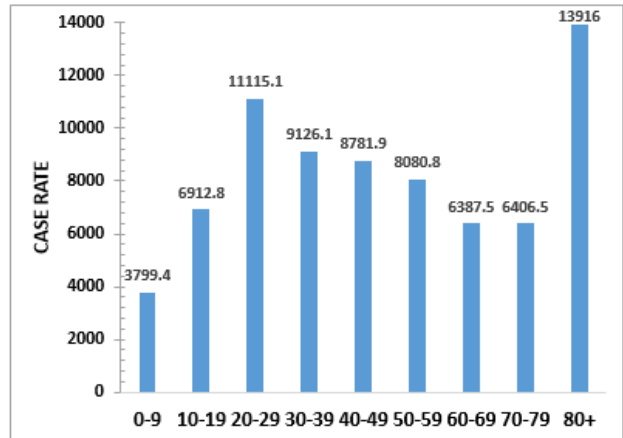
- In Richmond City, individuals aged 20-29 have the highest case rate among other age groups during the past four weeks (71.1 cases per 100,000 members of the population), followed by individuals aged 40-49 (59.2 cases per 100,000 members of the population).
- Case rates for individuals aged 80 and over are noticeably down, with no reported cases in the last four weeks among individuals 80 and over.

COVID-19 Case Rates by Age group in the last 4 weeks (June 14 – July 11, 2021)—Henrico County, VA (n = 187)



Age is missing for 6.5% (n=13) cases

COVID-19 Case Rates by Age group as of July 11, 2021 —Henrico County, VA (N = 25971)



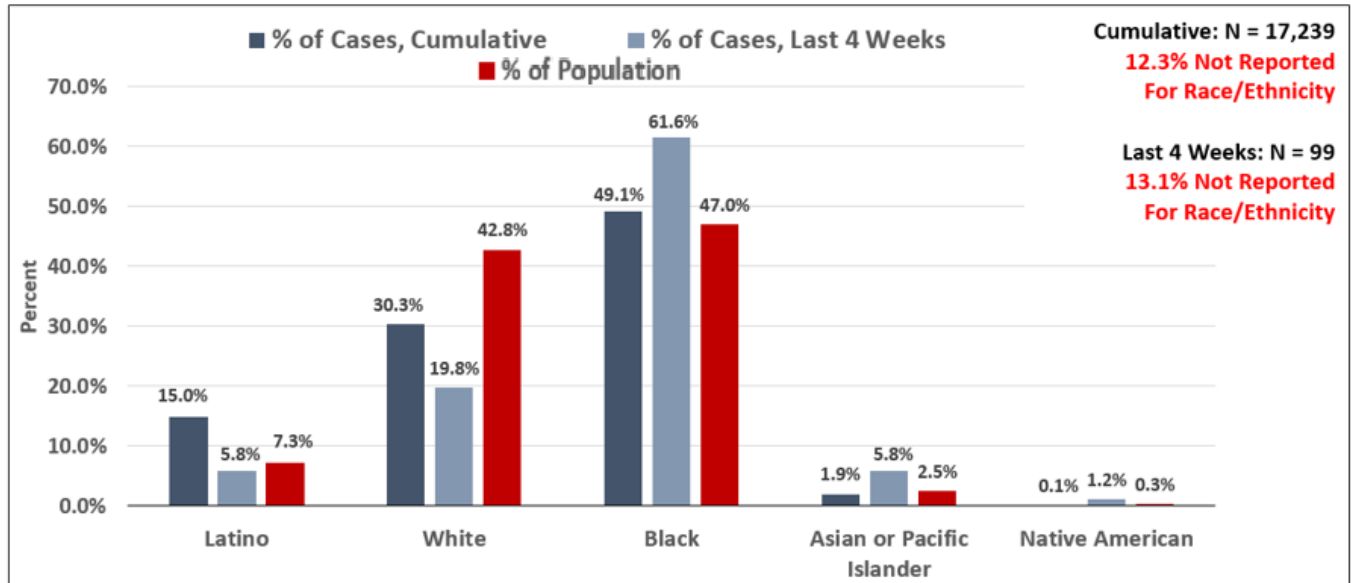
Age is missing for 0.09% (n=24) cases

- In Henrico, case rates over the past four weeks indicate a majority of cases occurring in younger individuals aged below 29 years of age, whereas cumulative case rates indicate a large burden being placed on individuals aged 80 and above.
- Case rates are notably down for older age groups, with a particularly notable drop for individuals 80 and over.

2.5 CASES AND POPULATION PROPORTIONS BY RACE AND ETHNICITY BY COUNTY

Population totals are based on 2019 data from the National Center for Health Statistics (NCHS). Please note - this is a change from previous reports which used Census data to estimate population by race and ethnicity group. The categories for NCHS population estimates do not include one for "Other Race" or "Two or More Races."

COVID-19 Case Distribution by Race and Ethnicity in the Last 4 Weeks (June 14 – July 12, 2021) and Cumulatively through July 12, 2021 – Richmond City, VA

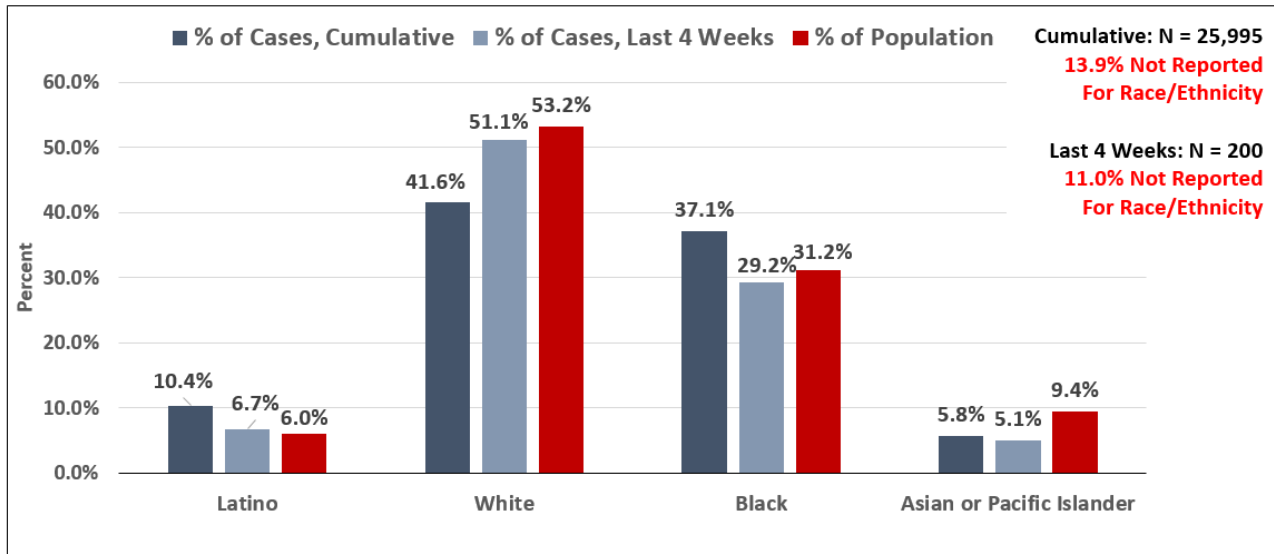


* NCHS population estimates are not available for Two or More Races (193 total cases) or Other Race (347 total cases) and thus they are absent from the plots.

* Missing and Unknown Ethnicities were assumed to be of Non-Hispanic ethnicity.

- In Richmond, the case burden for Black individuals over the last 4 weeks (61.4%) is disproportionately high relative to their population percentage (47%), while the case burden for White individuals is disproportionately low (19.8%) relative to their population percentage (42.8%).

**COVID-19 Case Distribution by Race and Ethnicity in the Last 4 Weeks (June 14 – July 12, 2021)
and Cumulatively through July 12, 2021 – Henrico County, VA**



* NCHS population estimates are not available for Two or More Races (318 total cases) or Other Race (770 total cases) and thus they are absent from the plots.
 * Missing and Unknown Ethnicities were assumed to be of Non-Hispanic ethnicity.
 * Cases among individuals identifying as Native American are suppressed (counts < 5)

- In Henrico, the case burden for Latino individuals (6.7%), White individuals (51.1%), and Black individuals (29.2%) are all roughly proportionate to their proportions of the population, but the case burden for Asian or Pacific Islanders (5.1%) is relatively low compared to their proportion of the population (9.4%).
- Cumulatively, Latino individuals and Black individuals represent disproportionately high case burdens (10.4% and 37.1%, respectively).

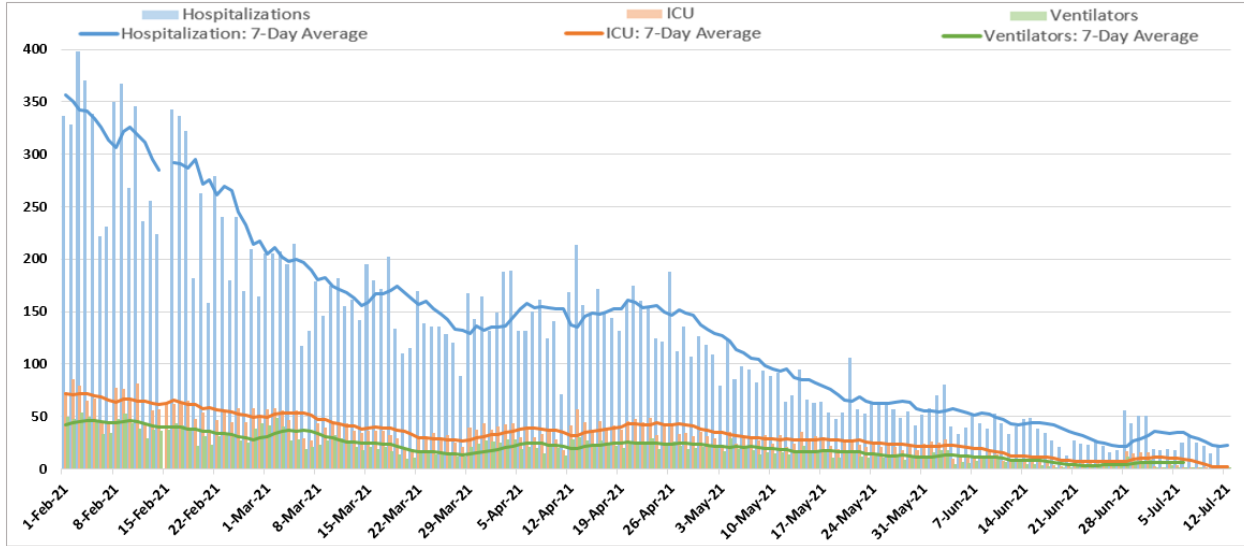
3.0 HOSPITALIZATIONS & FATALITIES

3.1 SUMMARY OF HOSPITALIZATIONS & FATALITIES

Hospitalizations based on date of admission among Richmond residents are fluctuating, but are for the most part low and stable with a 7-Day average of about 1 new hospitalization reported per day. Hospitalizations among Henrico residents are decreasing, with a 7-day average of 1 daily new hospitalization reported. Looking more broadly at health systems within the Richmond catchment area, hospitalizations, ICU hospitalizations, and ventilator utilizations are also decreasing. Hospitalizations have shown recent fluctuations but have generally stayed at a decreased level as compared to January of this year. All eleven hospitals in the Richmond catchment area are operating at a normal clinical status. *Hospitalizations & Deaths by subgroup (sex, age, and race) are reported on a monthly basis.*

3.2 COVID-19 HOSPITALIZATIONS, ICU HOSPITALIZATIONS, & VENTILATOR UTILIZATIONS IN THE RICHMOND CATCHMENT AREA

Total Daily COVID-19 Hospitalizations, ICU Hospitalizations, and Ventilator Utilizations
 February 1, 2021 – July 11, 2021
 Richmond Catchment Area



*Counts Displayed in Above Metric - Hospitalizations: 20418 of 76211, ICU Hospitalizations: 5138 of 18533, Ventilator Utilizations: 3161 of 10275

- Hospitalizations, ICU Hospitalizations, and Ventilator Utilizations in the Richmond Catchment area have followed a downward trend since the most recent notable peak during the last week of April. Recent upticks in hospitalizations were noted during the last week of June.

4.0 VACCINATION

*** Disclaimer ***

Counts of vaccinated individuals in Richmond, Henrico, and neighboring localities are slightly lower than previously reported. We believe this is due to efforts at the state and local level to improve accuracy of counts by ensuring individuals are not counted twice, and are assigned to the proper locality, but we are investigating.

4.1 VACCINE SUMMARY

Richmond and Henrico Health Districts are in Phase 2 of vaccination. Anyone 12 or older is eligible to receive a vaccine. As of July 6, 54.6% of the region’s population has received at least one dose of the vaccine and 48.4% of the region’s population has been fully vaccinated. Approximately 53.9% of Richmond and Henrico’s combined population has received at least one dose and 47.5% of the two districts combined population has been fully vaccinated. Local health departments currently appear to be administering the largest percentage of vaccines to Richmond and Henrico residents, compared with other providers. Due to data quality efforts, some duplicate first dose records have been removed, leading to minor changes in vaccination counts in certain areas.

The majority of vaccine recipients in both districts have been female. In both Richmond and Henrico, older age groups have consistently been vaccinated at a higher rate than younger age groups, with individuals in Richmond 65 and over, in Henrico 65 and over, and in Henrico between 50 and 64 all reaching the 70% goal for vaccinated percentage. Available data indicate that eligible White individuals have received the majority of the vaccine in both districts. Page 22 includes an estimated breakdown of vaccination uptake by race, sex, and age subgroups.

4.2 PERCENTAGE OF VACCINATION GOALS REACHED BY POPULATION

		POPULATION	POPULATION GOAL (70%)	PEOPLE WITH AT LEAST ONE DOSE	PEOPLE FULLY VACCINATED
Richmond	12-17	11,150	7,805	3,818 (34.2%)	2,830 (25.4%)
	18+	190,750	133,525	102,829 (53.9%)	91,313 (47.9%)
	65+	31,809	22,266	23,165 (72.8%)	24,297 (76.4%)
Henrico	12-17	25,954	18,168	13,176 (50.8%)	9,793 (37.7%)
	18+	256,660	179,662	178,011 (69.4%)	158,877 (61.9%)
	65+	52,720	36,904	44,872 (85.1%)	47,670 (90.4%)

Population totals are based on 2019 data from the National Center for Health Statistics (NCHS). Please note - this is a change from previous reports which used Census data to estimate population by age group.

Nationally, the Biden administration is using the **percentage of adults (individuals 18 and over)** to track progress in vaccination.

Though the percentage of the population needed to reach herd immunity is still uncertain, in line with federal guidance, we have set an overall goal of vaccinating 70% of the population. First and second doses of the Pfizer vaccine must be administered at least 21 days apart. First and second doses of the Moderna vaccine must be administered at least 28 days apart. People who received the Johnson & Johnson vaccine, which is a single dose, are included in the count of first doses administered.

4.3 VACCINATIONS BY LOCALITY AS OF JULY 12, 2021 - SOURCE: VDH.VIRGINIA.GOV

HEALTH DISTRICT	LOCALITY	TOTAL POPULATION	FIRST DOSES ADMINISTERED	SECOND DOSES ADMINISTERED
Chesterfield	Chesterfield	352,802	194,271	170,771
	Colonial Heights	17,370	8,200	6,949
	Powhatan	29,652	14,281	12,886
Chickahominy	Charles City	6,963	3,715	3,416
	Goochland	23,753	15,126	14,003
	Hanover	107,766	63,307	58,258
	New Kent	23,091	11,445	10,502
Henrico	Henrico	330,818	194,122	171,366
Richmond	Richmond City	230,436	108,374	95,188
Total		1,122,651	612,841	543,339

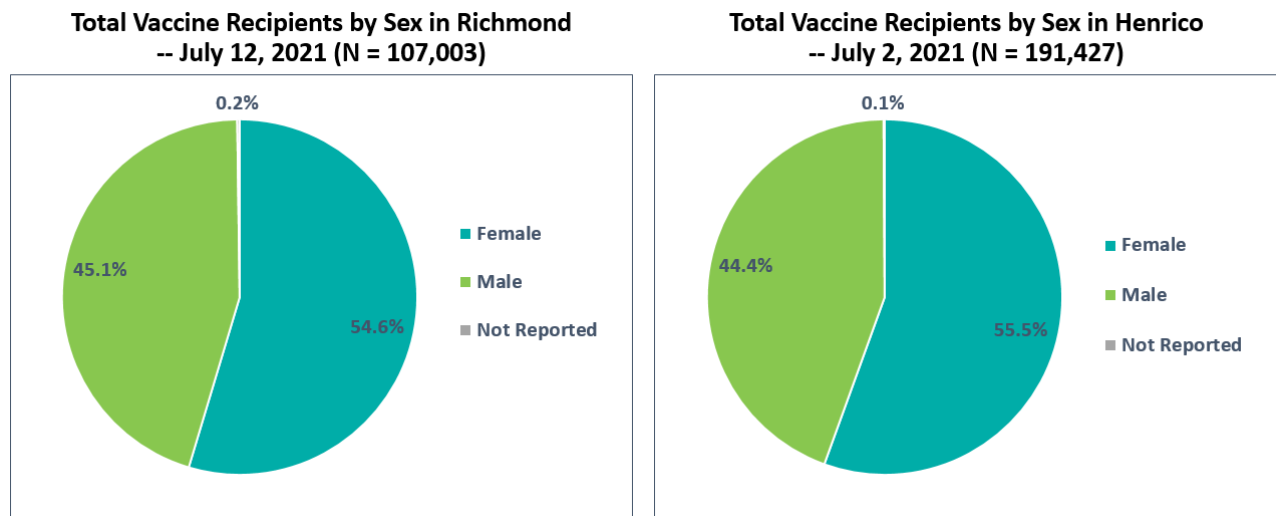
Population totals are based on 2019 data from the National Center for Health Statistics (NCHS). Please note - this is a change from previous reports which used Census data to estimate population by age group.

We have set a goal of vaccinating 75% of the population to reach herd immunity. First and second doses of the Pfizer vaccine must be administered at least 21 days apart. First and second doses of the Moderna vaccine must be administered at least 28 days apart. People who received the Johnson & Johnson vaccine, which is a single dose, are included in the count of first doses administered.

4.4 VACCINE DISTRIBUTION BY DEMOGRAPHIC SUBGROUP

UPDATE: Population estimates for age subgroups and for race and ethnicity subgroups have been changed for this report from the U.S. Census Bureau's American Community Survey (ACS) 2019 5-year estimates to the National Center for Health Statistics (NCHS) 2019 estimates to align with estimates used by other VDH metrics. This change also involves new race and ethnicity categories: Latino or Hispanic, Non-Hispanic White, Black or African-American, Asian or Pacific Islander, and Native American. Racial groups such as Two or more Races and Other Race have been excluded from the following metrics as they are without corresponding NCHS estimates, but the counts for these groups can be seen in the footnotes immediately below.

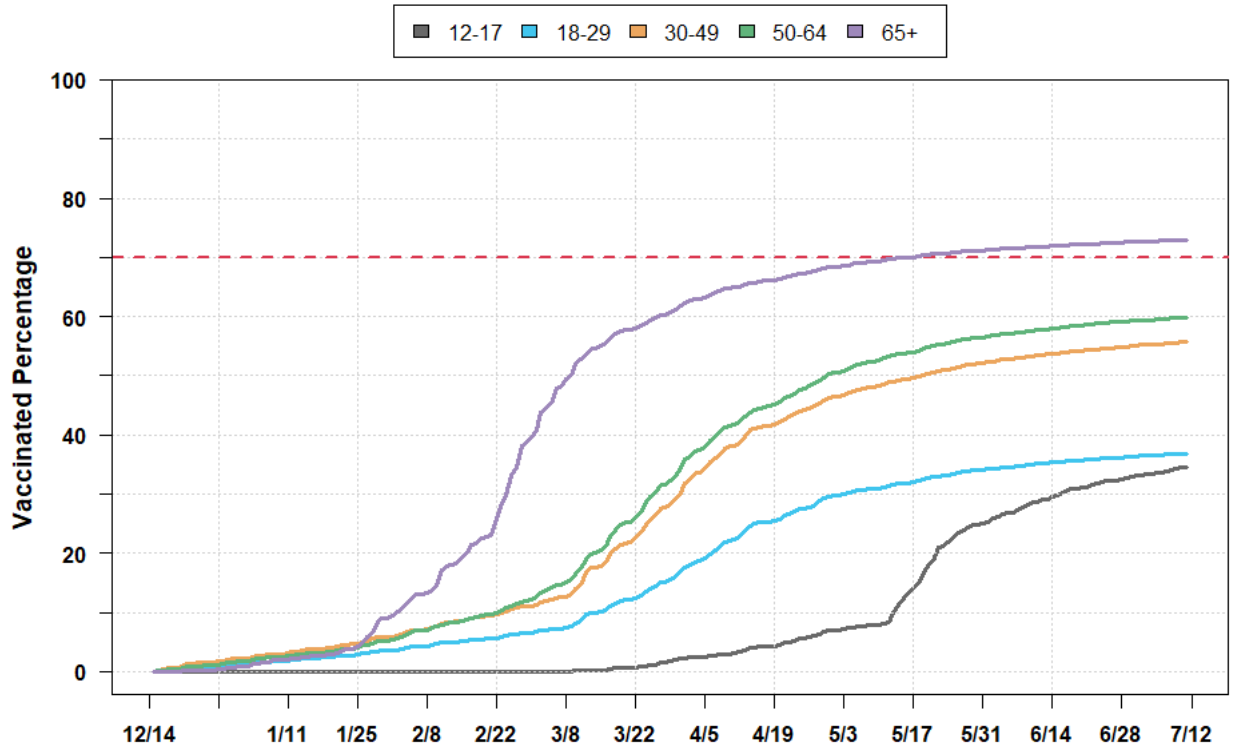
In both Richmond and Henrico, a majority of vaccinated individuals have been female.



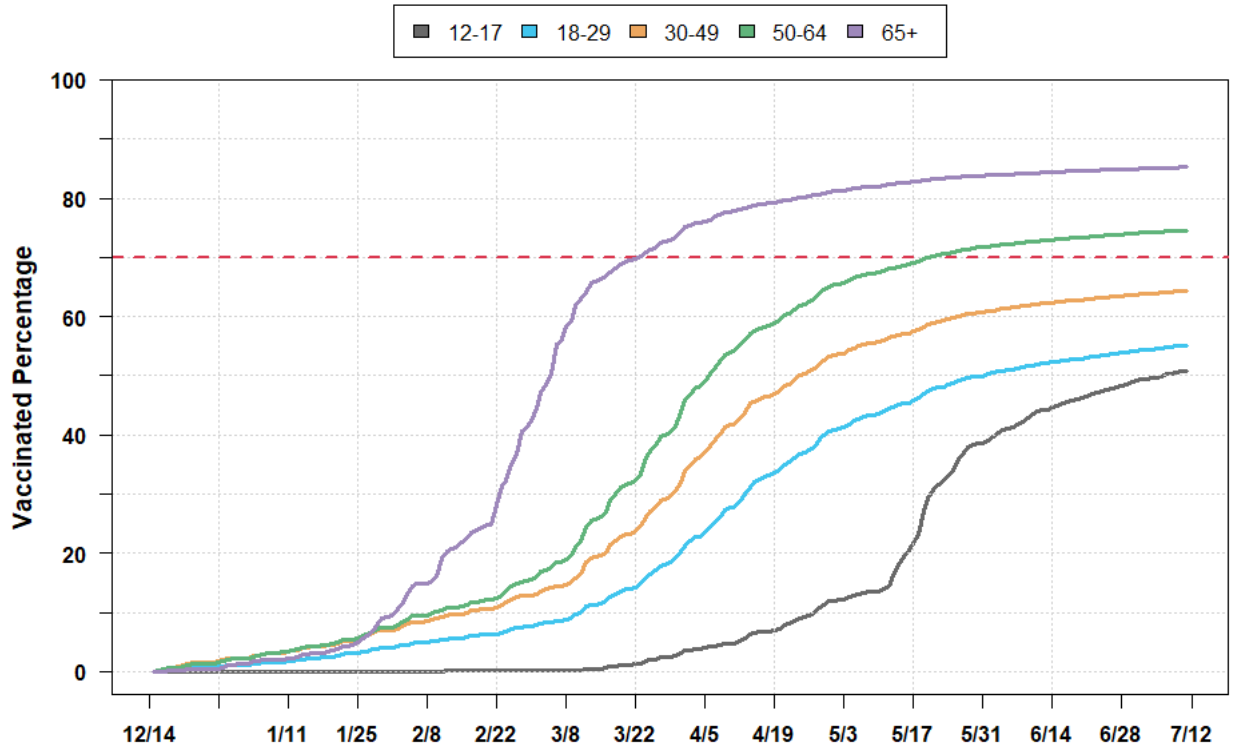
The following charts track vaccination rates by age group over time since vaccinations first began in mid-December.

- We can see a steep increase in vaccination rates in February and early March for individuals 65 and over such that over 70% of this age group is now vaccinated but new vaccinations are rising slowly.
- Individuals aged 18 to 29, 30 to 49, and 50 to 64 in Richmond saw sharp increases in vaccination rates in mid-March through April, with a steady but slower increase in vaccinations from May through June. These same age groups in Henrico saw a similar pattern, but the dropoff to a slower increase did not occur until later May.
- Among individuals aged 12 to 17, vaccination rates increased at a slow pace until vaccine opportunities opened up to the general population and individuals aged 12 to 15 were able to get vaccinated, at which point we have seen a sharp increase in vaccination rates that has not yet noticeably slowed.
- Individuals in Henrico between 50 and 64 reached this threshold in mid-May, while the same age group in Richmond is still well short of this goal.
- Individuals in Henrico have seen consistently higher vaccination rates across all age groups as compared to Richmond.
- All data is subject to lags in reporting, particularly in recent weeks.

Vaccinated Percentage over Time by Age Group - Richmond



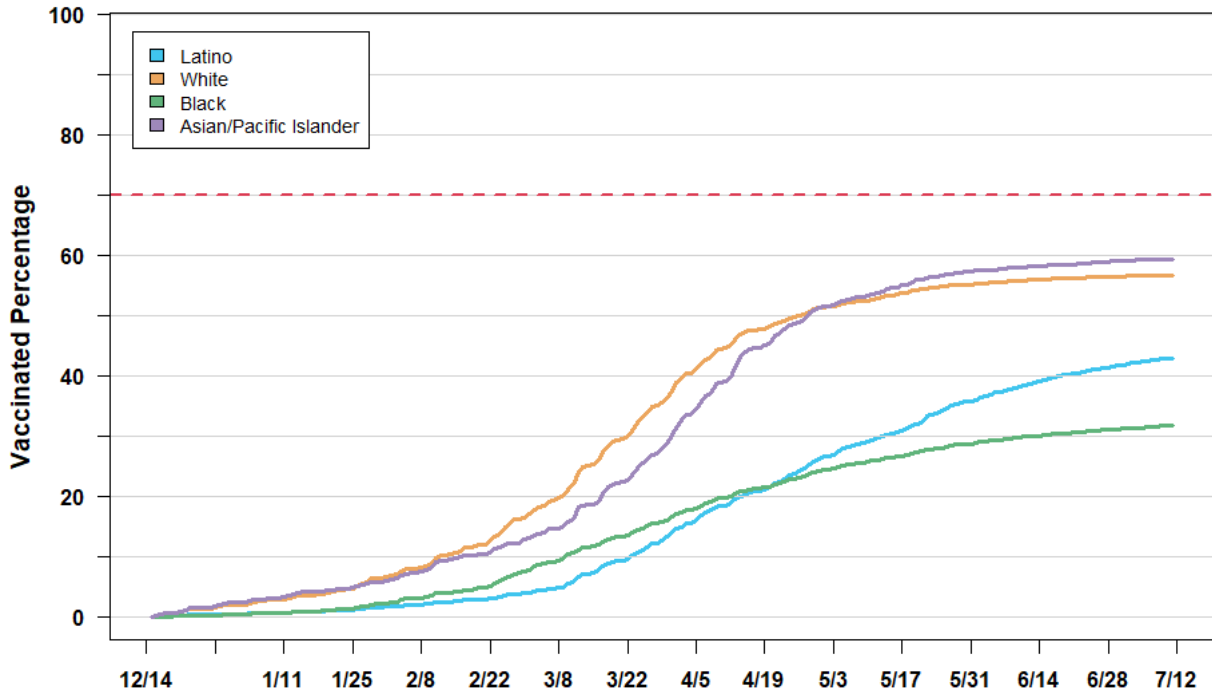
Vaccinated Percentage over Time by Age Group - Henrico



The following charts track vaccination rates by race and ethnicity over time since vaccinations first began in mid-December.

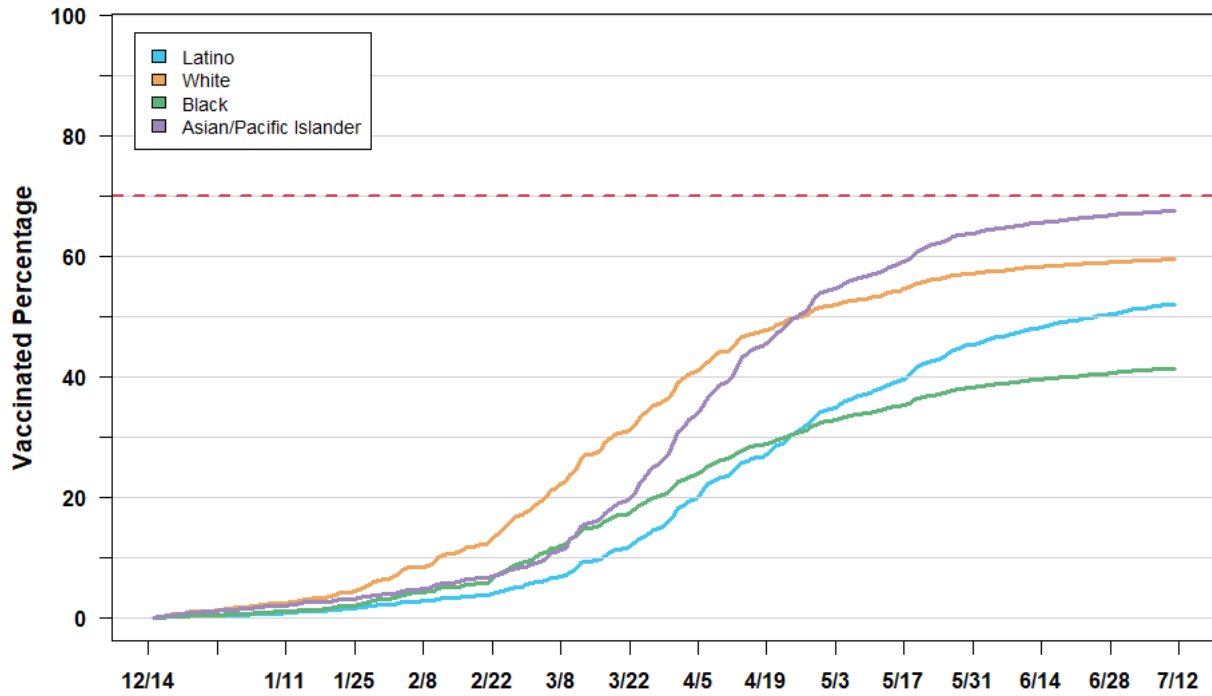
- In Richmond, the rate of increase of vaccinations among White individuals and Asian or Pacific Islander individuals have been fairly consistent, with over 50% of both groups vaccinated.
- In both Richmond and Henrico, Latino individuals and Black individuals saw a slower increase in vaccination rates through early March, but the rate of new vaccinations for Latino individuals began sharply increasing then and now represents the fastest increasing vaccination rates among all groups.
- In Henrico, Asian or Pacific Islander individuals saw slower uptake similar to Black individuals and Latino individuals through early March before seeing a sharp increase in March and April. Although new vaccinations have somewhat slowed in June, this group is the closest to the 70% vaccination goal as of July 12.
- In Henrico, White individuals represented the highest vaccination rate through the middle of April, but the rate of new vaccinations decreased noticeably since then, in line with the increase of new vaccinations of Black individuals in this same time period and behind the new vaccination rates for both Asian or Pacific Islander individuals and Latino individuals.

Vaccinated Percentage over Time (12 and Over) by Race/Ethnicity, Based on Reported and Imputed Data in Richmond



Vaccination rates by subgroup are underestimates due to individuals not disclosing race/ethnicity (1401 vaccinations). American Indian individuals (529 vaccinations) excluded due to unreliable vaccination rate calculations.

**Vaccinated Percentage over Time (12 and Over) by Race/Ethnicity,
Based on Reported and Imputed Data in Henrico**



**Vaccination rates by subgroup are underestimates due to individuals not disclosing race/ethnicity (4418 vaccinations).
American Indian individuals (1286 vaccinations) excluded due to unreliable vaccination rate calculations.**