

MONTHLY CASE REPORT FOR EXTERNAL USE

MONTH OF JUNE (JUNE 29, 2021 - JULY 25, 2021)

KEY TAKEAWAYS	2
1.1 CONFIRMED CASES, HOSPITALIZATIONS, FATALITIES, AND PROBABLE CASES BY COUNTY	3
1.2 CURRENT COVID-19 HOSPITALIZATIONS IN THE RICHMOND CATCHMENT AREA ON JULY 25, 2021	4
2.0 COVID-19 TESTING ENCOUNTERS AND POSITIVITY	4
2.1 TESTING SUMMARY	4
2.2 NUMBER OF PCR TESTS RELATIVE TO STATEWIDE TESTING GOAL	5
3.0 COVID-19 CASES	6
3.1 SUMMARY OF CASES	6
3.2 CASE REPORTS TRENDS BY DATE (SOURCE-VDH WEBSITE)	7
3.3 CASES BY SEX BY COUNTY	10
3.4 CASES RATES BY AGE GROUP BY COUNTY	11
3.5 CASES AND POPULATION PROPORTIONS BY RACE AND ETHNICITY BY COUNTY	12
4.0 COVID-19 HOSPITALIZATIONS	14
4.1 SUMMARY OF HOSPITALIZATIONS	14
4.2 COVID-19 HOSPITALIZATIONS, ICU HOSPITALIZATIONS, & VENTILATOR UTILIZATIONS IN THE RICHMOND CATCHMENT AREA AS OF JUNE 27, 2021	14
4.5 HOSPITALIZATIONS BY SEX, RACE, AND AGE BY COUNTY	15
5.0 COVID-19 FATALITIES	15
5.1 SUMMARY OF FATALITIES	15
5.2 DEATHS BY SEX, RACE, AND AGE BY COUNTY	15
6.0 VACCINATION	16
6.1 VACCINE SUMMARY	16
6.2 PERCENTAGE OF VACCINATION GOALS REACHED BY POPULATION	16
6.3 VACCINATIONS BY LOCALITY AS OF MAY 31, 2021 - SOURCE: VDH.VIRGINIA.GOV	17
6.4 VACCINE DISTRIBUTION BY DEMOGRAPHIC SUBGROUP - SOURCE: VIIS	18

KEY TAKEAWAYS

- According to the [VDH Pandemic Metrics Dashboard](#), in Richmond, there were **69.1 new cases per 100,000 in the last week**. Cases are considered to be **increasing**. Percent **positivity** for the locality is 5.8% and is **increasing**. In Henrico, there were **63.5 new cases per 100,000 in the last week** and are considered to be **increasing**. Percent positivity for the locality is 4.7% and is **increasing**.
- Consistent with the Pandemic Metrics Dashboard, **PCR percent positivity** has **increased** in Richmond from 2.1% to 5.6% in the last month. Percent positivity was highest in zip codes 23219 and 23222. Positivity also **increased** in Henrico, from 1.1% to 4.8%. Percent positivity was highest in zip codes 23231 and 23075. **The number of PCR tests administered across providers** has also dropped notably in Henrico in the last two months, compared to the preceding three months. Testing has increased in Richmond. 23220 and 23219 in Richmond, and 23230 and 23227 in Henrico had the highest testing rate per ZCTA population, consistent with the last 5 months.
- Following declines in May and June, **cases in both districts increased from late June through July**. Though there is noise in the data from cases being reallocated between localities, we can still observe an increase in cases over the past month in both Richmond and Henrico.
 - **In both districts over the last 4 weeks :**
 - **Females** continue to have more cases than males
 - Individuals **Under age 50** have higher case rates than those over 50
 - **Black Individuals** continue to have the highest **case burden**
- After an overall decline, **hospitalizations** have **plateaued** with a 7-day average of **less than 1** admission per day in Richmond and around **1 admission** per day in Henrico. In the Richmond catchment area, hospitalizations, ICU hospitalizations and ventilator utilizations have continued to decline throughout the month of July. All 11 hospitals are currently operating at a normal clinical status.
- Regarding **hospitalization demographics**, cumulative hospitalizations are highest among females and Black individuals in both districts. The median age of hospitalization has not changed since last month and is still 61 in Richmond and 67 in Henrico.
- After fluctuations in March, there have been **minimal COVID-19 deaths** in April through July in Richmond and Henrico. Cumulatively, deaths are highest among male individuals and Black individuals in Richmond and highest among female individuals and White individuals in Henrico. The median age of death has decreased from 77 to 76 this past month in Richmond but has not changed from the median of 80 in Henrico.
- **Vaccinations**
54.3% of the region's population has received at least one dose of the vaccine, and **49.8%** has been fully vaccinated.
62.8% of Richmond and Henrico's vaccine eligible population have received at least **one dose**, while **57.1% have been fully vaccinated**
 - **Females** have received more vaccines overall in both districts
 - **Older age** groups have received more vaccines than younger age groups
 - **Ethnic disparities** in vaccination uptake remain, with black residents of both districts continuing to have lower uptake.

In depth breakdowns of vaccination rates by sex, age group, race, and geography are contained in section 6.

1.0 COVID-19 SNAP SHOT

1.1 CONFIRMED CASES, HOSPITALIZATIONS, FATALITIES, AND PROBABLE CASES BY COUNTY

CASE STATUS	RICHMOND CITY	HENRICO COUNTY	VIRGINIA
New cases this month	344	622	10266
New cases this week (July 26)	159	241	4698
All cases	17496	26351	690183
Confirmed cases	14325	19360	535453
Hospitalizations	796	1056	29530
Deaths	241	572	9713
Probable cases	3171	6991	154730
Hospitalizations	20	48	1623
Deaths	39	69	1793
Case rate per 100,000	7592.6	7965.4	8086

Weekly cases added are estimated as the difference between the cases recorded from the current and prior week

*Case Rate per 100,000=(confirmed+probable)/population count *100,000.*

Population totals are based on 2019 data from the National Center for Health Statistics (NCHS). Please note - this is a change from previous reports which used Census data to estimate population by age group.

1.2 CURRENT COVID-19 HOSPITALIZATIONS IN THE RICHMOND CATCHMENT AREA ON JULY 25, 2021

The data included in this section comes from VHASS and it includes data from the following hospitals: VCU Health System, Retreat Doctors', Bon Secours Community, CWJ Chippenham, CWJ Johnson Willis, VA Medical Center, Bon Secours St. Mary's, Henrico Doctors, and Parham Doctors, Bon Secours St. Francis, and Memorial Regional Medical Center.

	TOTAL IN USE FOR COVID-19	CURRENTLY AVAILABLE
Confirmed Hospitalizations	59	139
Pending Hospitalizations	6	
Confirmed - ICU	17	47
Pending - ICU	*	
Confirmed - Ventilators	149	278
Pending - Ventilators	*	

Within these 11 hospitals that comprise the Richmond catchment area, there are currently 47 available adult ICU beds, and 278 available ventilators. Based on the VHASS hospital dashboard on July 26, all hospitals are operating at normal clinical status.

**Counts <5 have been suppressed.*

***A clinical status of "normal" indicates that hospital clinical resources are operating within normal conditions. A clinical status of "full" indicates that hospital clinical resources are exceeded and acceptable care cannot be provided to additional patients. Diversion or Community surge response is required.*

2.0 COVID-19 TESTING ENCOUNTERS AND POSITIVITY

2.1 TESTING SUMMARY

Consistent with the Pandemic Metrics Dashboard, PCR percent positivity has increased in Richmond from 2.1% to 5.6% in the last month. Percent positivity was highest in zip codes 23219 and 23222. Positivity also increased in Henrico, from 1.1% to 4.8%. Percent positivity was highest in zip codes 23231 and 23075. The number of PCR tests administered across providers has also dropped notably in Henrico in the last two months, compared to the preceding three months. Testing has increased in Richmond. 23220 and 23219 in Richmond, and 23230 and 23227 in Henrico had the highest testing rate per ZCTA population, consistent with the last 5 months.

Total tests by testing modality and the associated 7-day average in percent positivity are summarized in the table below. Data are from the [VDH public dashboard](#) on July 26, 2021.

	RICHMOND CITY		HENRICO COUNTY	
	Tests	Positivity	Tests	Positivity
PCR*	267,377	5.6%	407,154	4.8%
Antigen	56,341	4.5%	110,755	5.4%
Total (PCR, antigen, and antibody)	328,374	5.5%	527,643	5.5%

*All testing metrics included in previous reports have been based on PCR tests

2.2 NUMBER OF PCR TESTS RELATIVE TO STATEWIDE TESTING GOAL

The counts below are based on the total number of testing encounters provided by the Virginia Department of Health for Richmond City and Henrico County. **It is important to note that the number of testing encounters is different from the number of people tested, as some individuals may be tested more than once.** The counts below should be viewed as an approximation of the percentage of each county’s population that has been tested and may be higher than the actual percentage of the population tested.

MONTH	RICHMOND CITY - TOTAL PCR TESTS/MONTH	HENRICO COUNTY - TOTAL PCR TESTS/MONTH
July 2021	8,977	11,861
June 2021	6,514	12,630
May 2021	9,066	17,393
April 2021	13,590	24,550
March 2021	16,505	27,164
February 2021	22,475	31,293
January 2021	35,001	50,108
December 2020	29,921	40,568

*The testing date was not reported for **483 PCR testing encounters in Richmond** and not reported for **909 PCR testing encounters in Henrico**, inclusive of all PCR tests since January 2020.*

3.0 COVID-19 CASES

3.1 SUMMARY OF CASES

Following declines in May and June, cases in both districts increased from late June through July. Though there is noise in the data from cases being reallocated between localities, we can still observe an increase in cases over the past month in both Richmond and Henrico from the epicurves. Sections 3.10 and 3.11 provide maps of cases in the past month, including and excluding LTCFs, respectively.

Female individuals in both Richmond and Henrico comprise a higher proportion of cases compared to male individuals, both in the last month and cumulatively. In Richmond, 20-29 year olds continue to have the highest case rate by age group overall and in the last four weeks, though their case rate is closer to other age groups in the last four weeks.

In Henrico, individuals over the age of 80 years show the highest cumulative case rate, whereas over the past four weeks, the higher case burdens are fairly uniformly distributed across age groups under 50, with individuals 0-9 actually possessing the highest case rate.

Regarding race and ethnicity, in Richmond, the highest proportion of cases is still among Black individuals, again both cumulatively and in the last 4 weeks. In Henrico, cumulatively White individuals comprise the highest case burden, but Black individuals' case burden is disproportionate to their population and Black individuals comprise the majority of cases in the last four weeks. Sections 3.8 and 3.9 show weekly trends in cases by age group and race and ethnicity, respectively.

NOTE: Data quality control efforts over the last few weeks have led to the retroactive district reassignment of previously reported cases, sometimes leading to "negative" cases on a given day in Richmond or Henrico when the number of cases move to another district is greater than the combination of cases moved to Richmond or Henrico along with the new cases reported on that day.

3.2 CASE REPORTS TRENDS BY DATE (SOURCE-VDH WEBSITE)

*** Disclaimer ***

In recent weeks, case investigators have made significant efforts to reallocate past cases to appropriate localities (e.g. a case originally listed in Richmond City might be reassigned to Henrico County, Chesterfield County, etc.). This has led to sometimes significant discrepancies between reported cases and actual new cases. The report date and its count corresponds to the date the case count was reported publicly (or reallocated publicly). The report date does not have any equivalent variable in VEDSS and cannot be directly linked to case-specific dates (e.g. event dates or lab report dates).

*Case counts by report date are estimated by subtracting the cumulative cases on the previous day from that of the current day. If the number of cases reallocated to another locality on a day is higher than the cases added for that day (either as new cases or via reallocation), a **negative** count will be displayed. Meanwhile, if the number of cases reallocated to a specific locality is a high number on a given day, reported cases counts can be noticeably **inflated** for that day beyond the actual case counts. The table below clarifies the weekly total deviation of actual new case counts from the reported counts.*

Interpretation: On the week of June 28, 2021 - July 4, 2021, there were 126-150 more cases than were reported in Richmond City, and between 151 and 175 fewer cases than were reported in Henrico County.

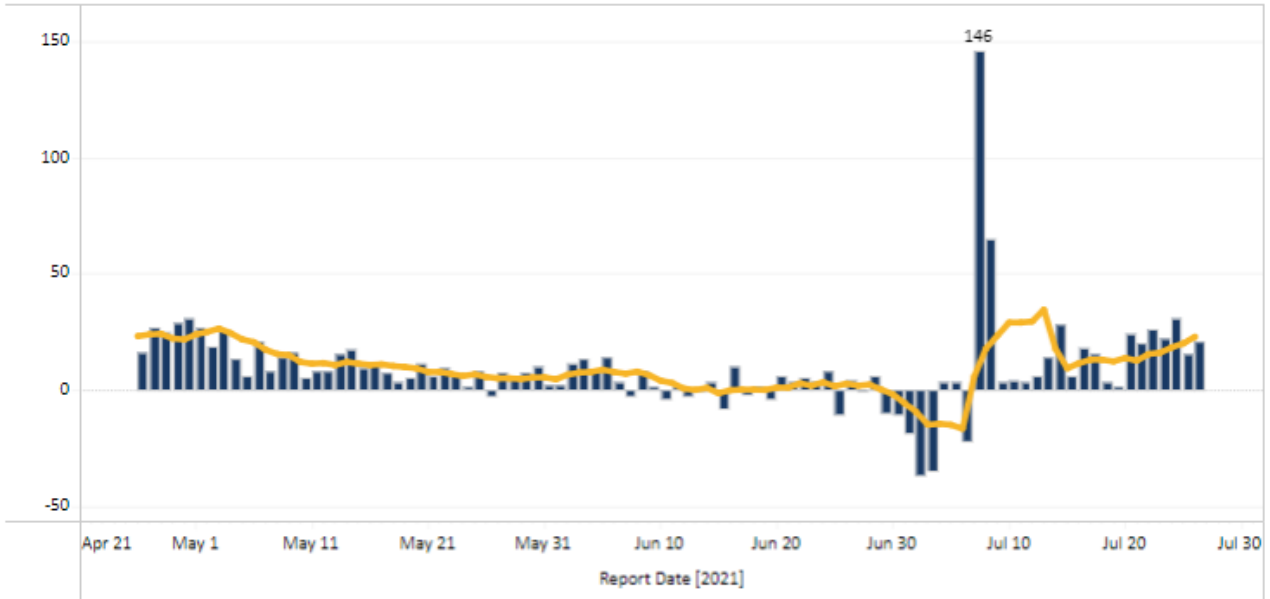
Week	Deviation of Actual New Case Counts from Reported Counts	
	Richmond	Henrico
06/28 to 07/04	126-150 Higher Count than Reported	151-175 Lower Count than Reported
07/05 to 07/11	151-175 Lower Count than Reported	51-75 Higher Count than Reported
07/12 to 07/18	0-25 Lower Count than Reported	0-25 Higher Count than Reported
07/19 to 07/25	0-25 Higher Count than Reported	0-25 Higher Count than Reported

*While the table reports the **weekly** total discrepancy between the actual new case count and the reported case count, the plots below display the **daily** reported case count. The corresponding 7-day moving average is a recurrent average of the reported case count for each 7-day data sequence.*

Number of New Cases Reported [^]	7-Day Average Number of Daily New Cases Reported	7-Day Average Number of New Daily Cases Reported, Rate per 100,000 Population	Total Number of New Cases per 100,000 Population within last 14 days
21	23	9.9	106.7

Report Date Daily Cases Counts for past 90 Days
Richmond City

Select Date Range (Affects Bar Chart)
Past 90 Days

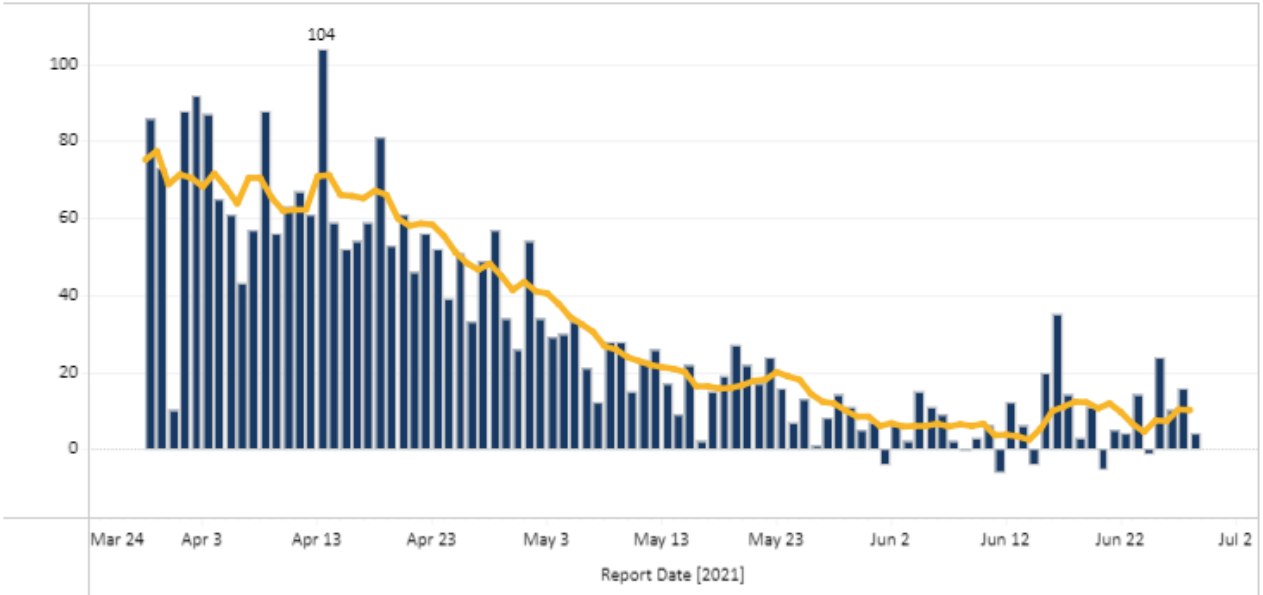


- *Following a rapid decline from January through May, and despite brief upticks in late March and early April, recent data suggests a decrease in overall case numbers in the Richmond City area, with a 7-Day Average of 6 new cases per day per 100,000 people.*

Number of New Cases Reported [^]	7-Day Average Number of Daily New Cases Reported	7-Day Average Number of New Daily Cases Reported, Rate per 100,000 Population	Total Number of New Cases per 100,000 Population within last 14 days
4	10	3.1	46.77

Report Date Daily Cases Counts for past 90 Days
Henrico

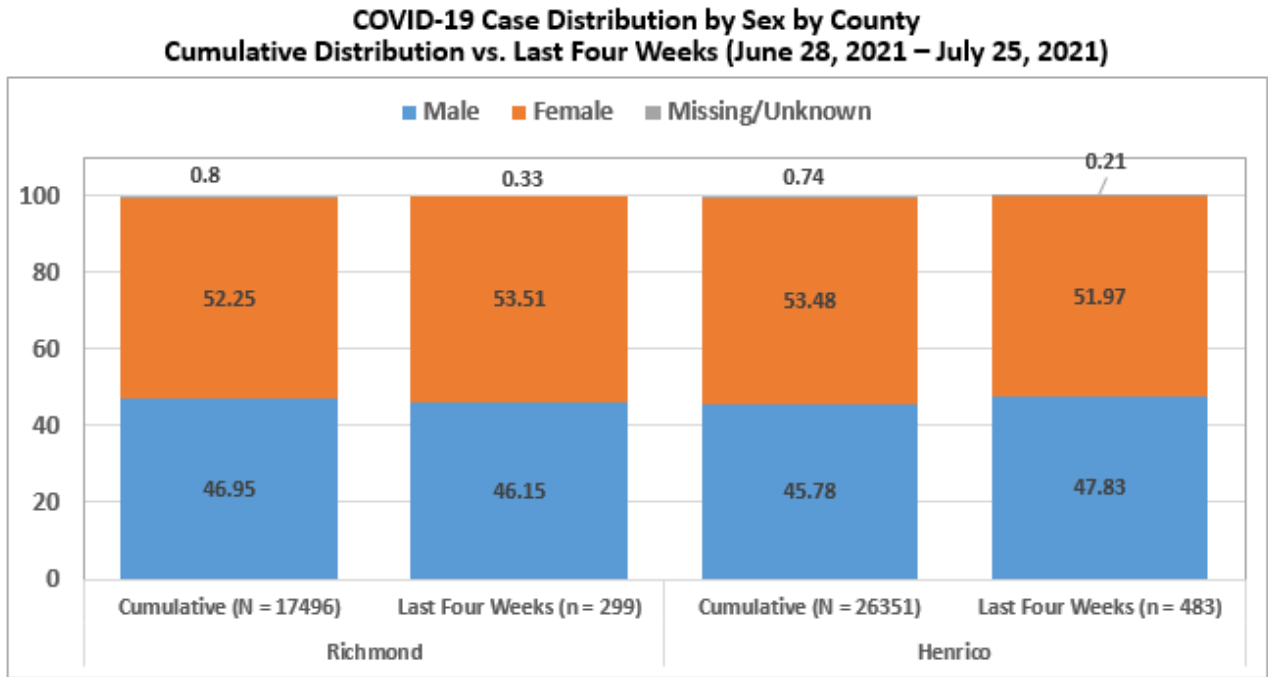
Select Date Range (Affects Bar Chart)
Past 90 Days



- *In Henrico County, cases largely declined over the course of February, March, April and May, and currently cases in Henrico County are following a downward trend, with a recent 7-Day Average of only 4 new cases daily per 100,000 people, despite brief upticks during the last couple of weeks of June.*

3.3 CASES BY SEX BY COUNTY

All percentages are based on overall case distribution, rather than the proportion of known cases for each measure, and therefore may not correspond directly with VDH percentages.

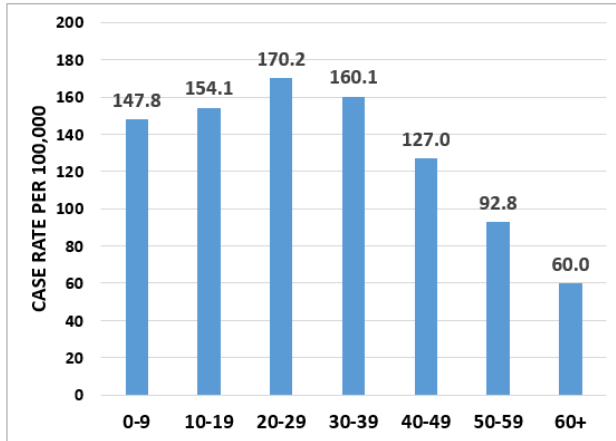


- In both Richmond City and Henrico County, the majority of cases have been among women in the last four weeks (53.5% and 51.97%, respectively), as well as cumulatively (52.25% and 53.48%, respectively).

3.4 CASES RATES BY AGE GROUP BY COUNTY

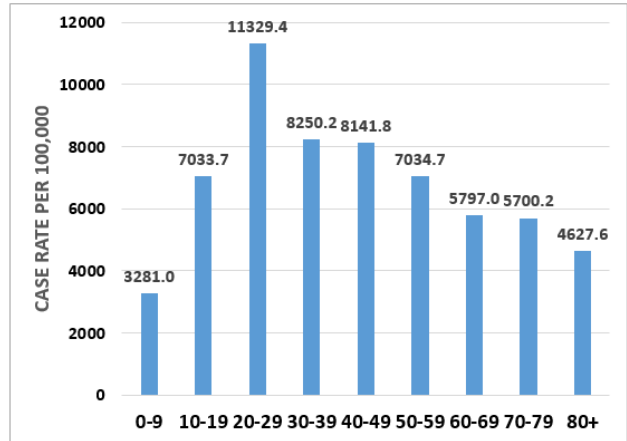
Note: The charts below represent rates per 100,000. Population estimates to produce case rates by age group are taken from the National Center for Health Statistics (NCHS) 2019 estimates for Richmond City and Henrico County. In addition, case rates in the last four weeks for individuals 60-69, 70-79, and 80 and over have been combined into 60 and over due to suppressed individual case counts.

COVID-19 case distribution by Age group in last 4 weeks (June 28 – July 26, 2021) – Richmond City, VA (N=299)



*Age is missing for 0.0% (n=0) of cases

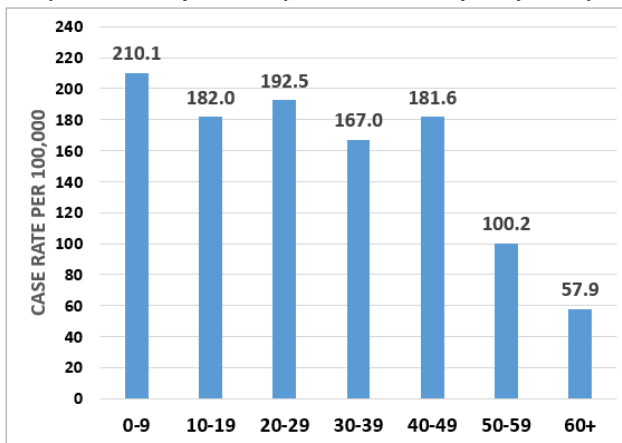
Cumulative COVID-19 case distribution by Age group as of July 26, 2021 – Richmond City, VA (N=17,486)



*Age is missing for 0.02% (n=3) of cases

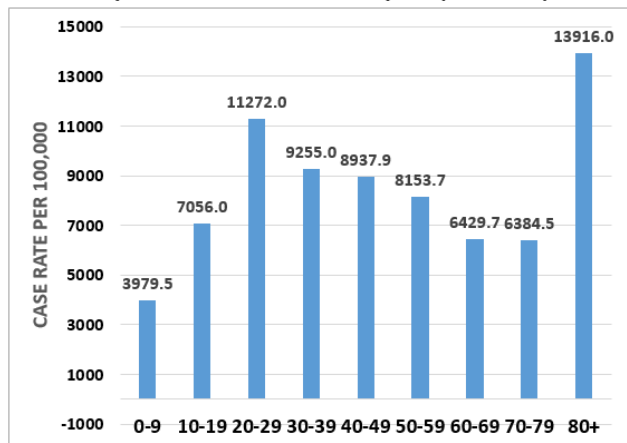
- Individuals aged 20-29 comprise by far the highest case rate cumulatively (10,974.0 per 100,000) but their case rate is closer to individuals aged 30-39 and other age groups in the last four weeks.
- Cases among individuals 60 and over make up a smaller proportion of cases in the last four weeks versus cumulatively.

COVID-19 case distribution by Age group in the last 4 weeks (June 28 – July 26, 2021) – Henrico County, VA (N=483)



*Age is missing for 0.2% (n=1) of cases

Cumulative COVID-19 case distribution by Age group as of July 26, 2021 – Henrico County, VA (N=26,351)



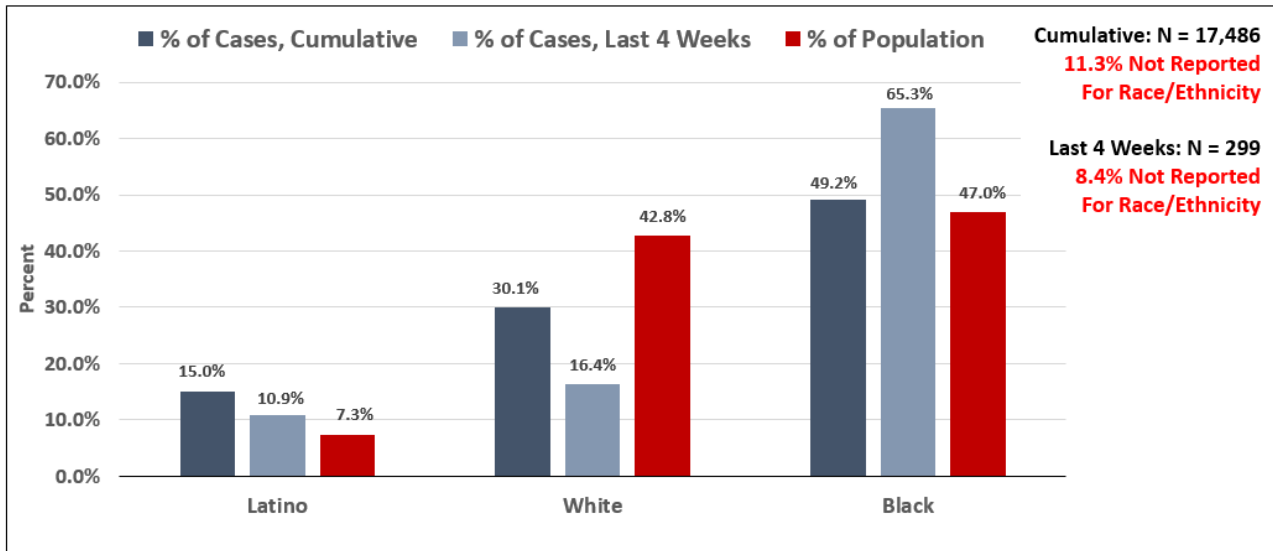
*Age is missing for 0.2% (n=12) of cases

- In Henrico, individuals aged 0-9 represent the highest case rate, a contrast from their low cumulative proportion of the case burden
- Individuals aged 80 and over and 20-29 represent the highest case rates cumulatively.
- Case rates for age groups under 50 are low and relatively uniform in the last four weeks, and there is a noticeable drop-off in case rates for age groups 50 and over.

3.5 CASES AND POPULATION PROPORTIONS BY RACE AND ETHNICITY BY COUNTY

UPDATE: Population estimates for race and ethnicity subgroups have been changed for this report from the U.S. Census Bureau’s American Community Survey (ACS) 2019 5-year estimates to the National Center for Health Statistics (NCHS) 2019 estimates to align with estimates used by other VDH metrics. This change also involves new race and ethnicity categories: Latino or Hispanic, Non-Hispanic White, Black or African-American, Asian or Pacific Islander, and Native American.

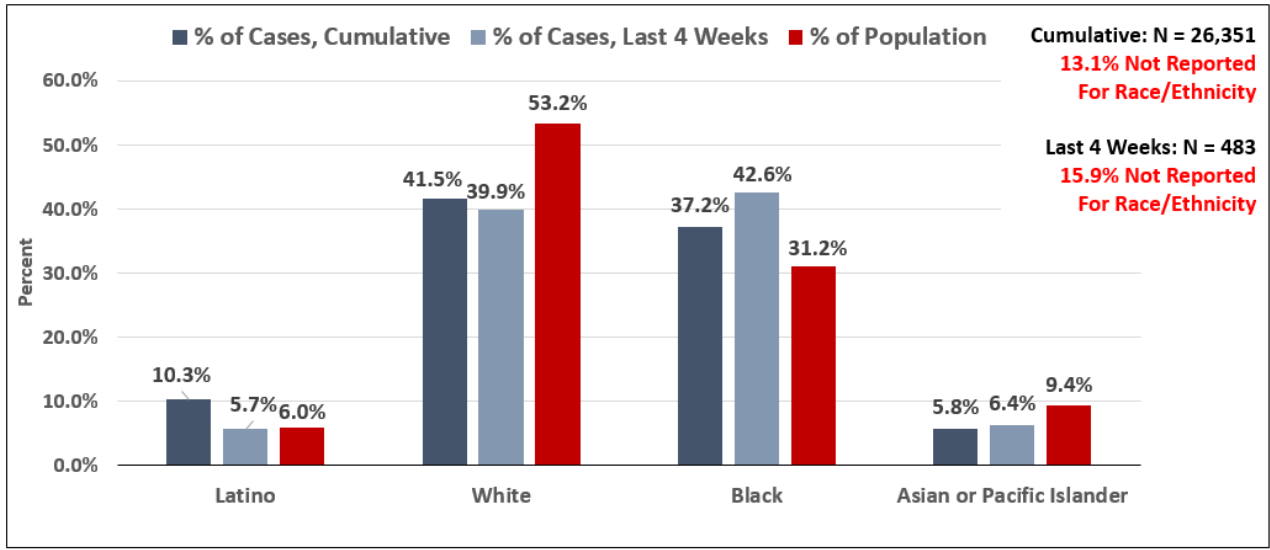
COVID-19 Case Distribution by Race and Ethnicity in the Last 4 Weeks (June 28 – July 26, 2021) and Cumulatively through July 26, 2021 – Richmond City, VA



* NCHS population estimates are not available for Two or More Races (208 total cases) or Other Race (360 total cases) and thus they are absent from the plots.
 * Missing and Unknown Ethnicities were assumed to be of Non-Hispanic ethnicity.
 * Cases among individuals identifying as Asian or Pacific Islander or Native American are suppressed (counts < 5)

- In Richmond, Black individuals in the last 4 weeks represent the highest proportional case burden at 65.3%. Black individuals also comprise the majority of cumulative cases (49.2%) followed by White (30.1%) individuals.
- Cumulatively, Hispanic and Latino individuals comprise a disproportionately high case burden (15.0%) but in the last four weeks make up a smaller proportion of cases (10.0%), though still disproportionate to their contribution to the overall population (7.3%).

**COVID-19 Case Distribution by Race and Ethnicity in the Last 4 Weeks (June 14 – July 12, 2021)
and Cumulatively through July 12, 2021 – Henrico County, VA**



* NCHS population estimates are not available for Two or More Races (333 total cases) or Other Race (787 total cases) and thus they are absent from the plots.

* Missing and Unknown Ethnicities were assumed to be of Non-Hispanic ethnicity.

* Cases among individuals identifying as Native American are suppressed (counts < 5)

- In Henrico, Black individuals represent a disproportionately high case burden in the last four weeks (42.6%) and cumulatively (37.2%) relative to their population (31.2%)
- White individuals comprise the majority of cumulative cases (41.5%) followed by Black individuals.
- Hispanic and Latino individuals comprise a disproportionately high case burden cumulatively (10.3%) but a relatively proportionate case burden in the last four weeks.

4.0 COVID-19 HOSPITALIZATIONS

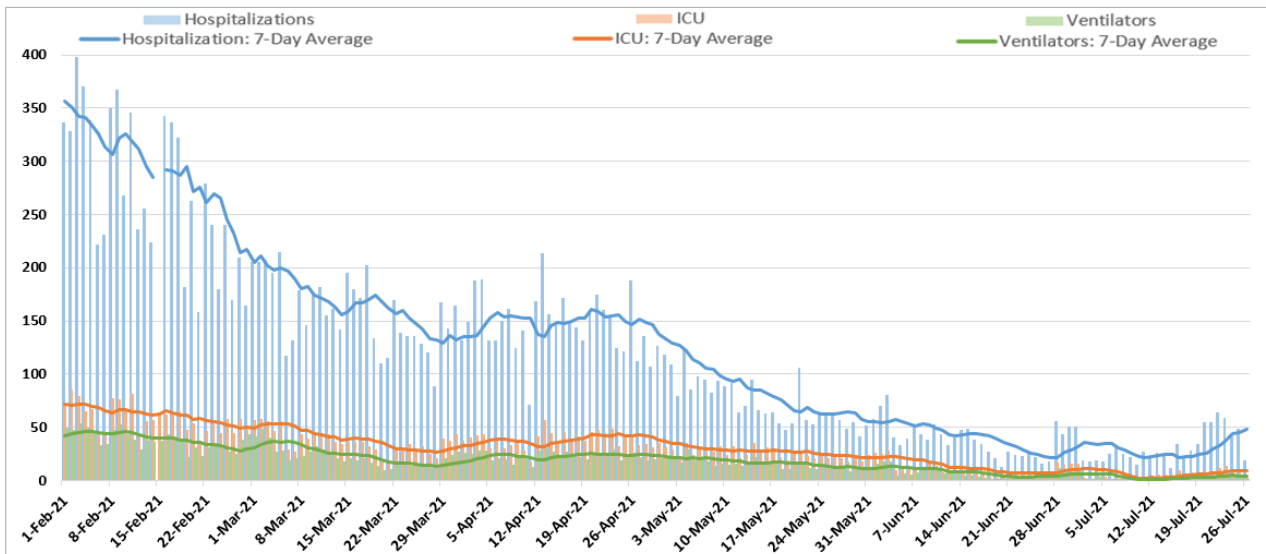
4.1 SUMMARY OF HOSPITALIZATIONS

After an overall decline, hospitalizations have plateaued with a 7-day average of less than 1 admission per day in Richmond and around 1 admission per day in Henrico, based on VEDSS data (see [VDH Dashboard](#) for additional trend data). Looking more broadly at the 11 hospitals that comprise the Richmond catchment area, hospitalizations, ICU hospitalizations and ventilator utilizations have continued to decline throughout the month of July. All 11 hospitals are currently operating at a normal clinical status.

Regarding hospitalization demographics, cumulative hospitalizations are highest among females and Black individuals in both districts. The median age of hospitalization has not changed since last month and is still 61 in Richmond and 67 in Henrico.

4.2 COVID-19 HOSPITALIZATIONS, ICU HOSPITALIZATIONS, & VENTILATOR UTILIZATIONS IN THE RICHMOND CATCHMENT AREA AS OF JUNE 27, 2021

Total Daily COVID-19 Hospitalizations, ICU Hospitalizations, and Ventilator Utilizations
February 1, 2021 – July 25, 2021
Richmond Catchment Area



*Counts Displayed in Above Metric - Hospitalizations: 20967 of 76760, ICU Hospitalizations: 5254 of 18649, Ventilator Utilizations: 3220 of 10332

- Hospitalizations, ICU Hospitalizations, and Ventilator Utilizations in the Richmond Catchment area have followed a downward trend since the most recent notable peak during the last week of April. Recent upticks in hospitalizations were noted during the last week of June.
- *Note: Data from February 15th, 2021 showed an erroneously high value and was subsequently omitted from the analysis. Steps are being taken to restore the quality of this data.*

4.5 HOSPITALIZATIONS BY SEX, RACE, AND AGE BY COUNTY

The minimum age ranges correspond to ages in months, which have been converted to years.

CONFIRMED AND PROBABLE	RICHMOND (n= 816)	HENRICO (n= 1104)
Gender		
Male	384	537
Female	432	567
Missing		
Median Age (range)	61 (0.2 - 96)	67 (0.1 - 104)
Race		
White	110	443
Black	539	495
Latino	138	78
Asian or Pacific Islander	7	33
Other race	9	38
Two or more races	4	11
Not reported	8	3

Women comprise a majority of hospitalizations in both Richmond and Henrico. In Richmond, Black individuals comprise the majority of hospitalizations, which is also the case in Richmond. The median age of hospitalization for Richmond and Henrico is sixty-one and sixty-seven, respectively.

5.0 COVID-19 FATALITIES

5.1 SUMMARY OF FATALITIES

After fluctuations in March, there have been minimal COVID-19 deaths in April through July in Richmond and Henrico (see [VDH Dashboard](#) for additional trend data). Cumulatively, deaths are highest among male individuals and Black individuals in Richmond and highest among female individuals and White individuals in Henrico. The median age of death has decreased from 77 to 76 this past month in Richmond but has not changed from the median of 80 in Henrico.

5.2 DEATHS BY SEX, RACE, AND AGE BY COUNTY

CONFIRMED AND PROBABLE	RICHMOND (n= 280)	HENRICO (n=641)
Gender		
Male	139	293
Female	141	348
Not reported	-	-
Median Age (range)	76 (30 - 98)	80 (18 - 106)
Race		
White	87	353
Black	172	237
Latino	14	26
Asian or Pacific Islander	*	18
Other race	*	-
Two or more races	-	-
Not reported	*	5

* Counts <5 have been suppressed.

6.0 VACCINATION

6.1 VACCINE SUMMARY

Richmond and Henrico Health Districts are in Phase 2 of vaccination. Anyone 12 or older is now eligible to receive the vaccine. Vaccine supply and distribution are summarized in the tables below. As of July 26, 2021, 54.3% of the region’s population has received at least one dose of the vaccine, and 49.8% of the region’s total population has been fully vaccinated. As of July 26, 2021, regarding Richmond and Henrico’s combined 18+ population, 63.9% have received at least one dose, while 58.4% of the two districts combined population has been fully vaccinated.

The majority of vaccine recipients in Richmond City have been females and people 70-79, while the majority in Henrico County have been females and people over 65 years old. Available data indicate that eligible White individuals have received the majority of the vaccine.

6.2 PERCENTAGE OF VACCINATION GOALS REACHED BY POPULATION

		POPULATION	POPULATION GOAL (75%)	PEOPLE WITH AT LEAST ONE DOSE	PEOPLE FULLY VACCINATED
Richmond	12-17	11,150	8,363	4,174 (37.4%)	3,409 (30.6%)
	18+	190,750	143,063	104,911 (55%)	95,301 (50%)
	65+	31,809	23,857	23,400 (73.6%)	21,668 (68.1%)
Henrico	12-17	25,954	19,466	14,173 (54.6%)	11,876 (45.8%)
	18+	256,660	192,495	181,092 (70.6%)	165,893 (64.6%)
	65+	52,720	39,540	45,214 (85.8%)	42,523 (80.7%)

Population totals are based on 2019 data from the National Center for Health Statistics (NCHS). Please note - this is a change from previous reports which used Census data to estimate population by age group.

Nationally, the Biden administration is using the **percentage of adults (individuals 18 and over)** to track progress in vaccination.

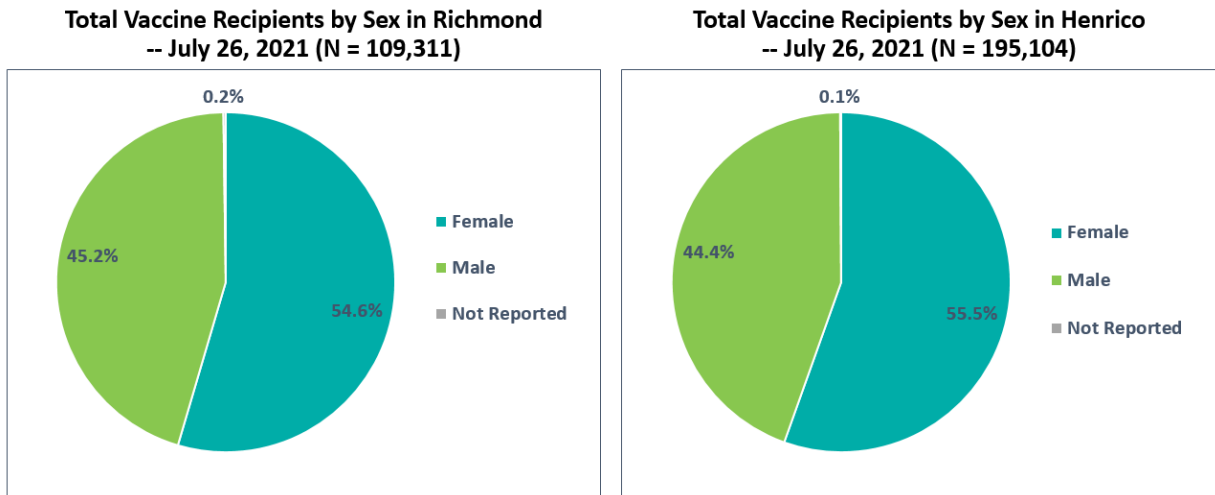
Though the percentage of the population needed to reach herd immunity is still uncertain, in line with federal guidance, we have set an overall goal of vaccinating 70% of the population. First and second doses of the Pfizer vaccine must be administered at least 21 days apart. First and second doses of the Moderna vaccine must be administered at least 28 days apart. People who received the Johnson & Johnson vaccine, which is a single dose, are included in the count of first doses administered.

6.3 VACCINATIONS BY LOCALITY AS OF MAY 31, 2021 - SOURCE: VDH.VIRGINIA.GOV

HEALTH DISTRICT	LOCALITY	TOTAL POPULATION	FIRST DOSES ADMINISTERED	SECOND DOSES ADMINISTERED
Chesterfield	Chesterfield	352,802	195,771	177,415
	Colonial Heights	17,370	8,2977	7,268
	Powhatan	29,652	14,309	12,554
Chickahominy	Charles City	6,963	3,754	3,540
	Goochland	23,753	15,242	14,332
	Hanover	107,766	62,790	56,671
	New Kent	23,091	11,507	10,812
Henrico	Henrico	330,818	195,265	177,769
Richmond	Richmond City	230,436	109,085	98,710
Total		1,122,651	609,700	559,071

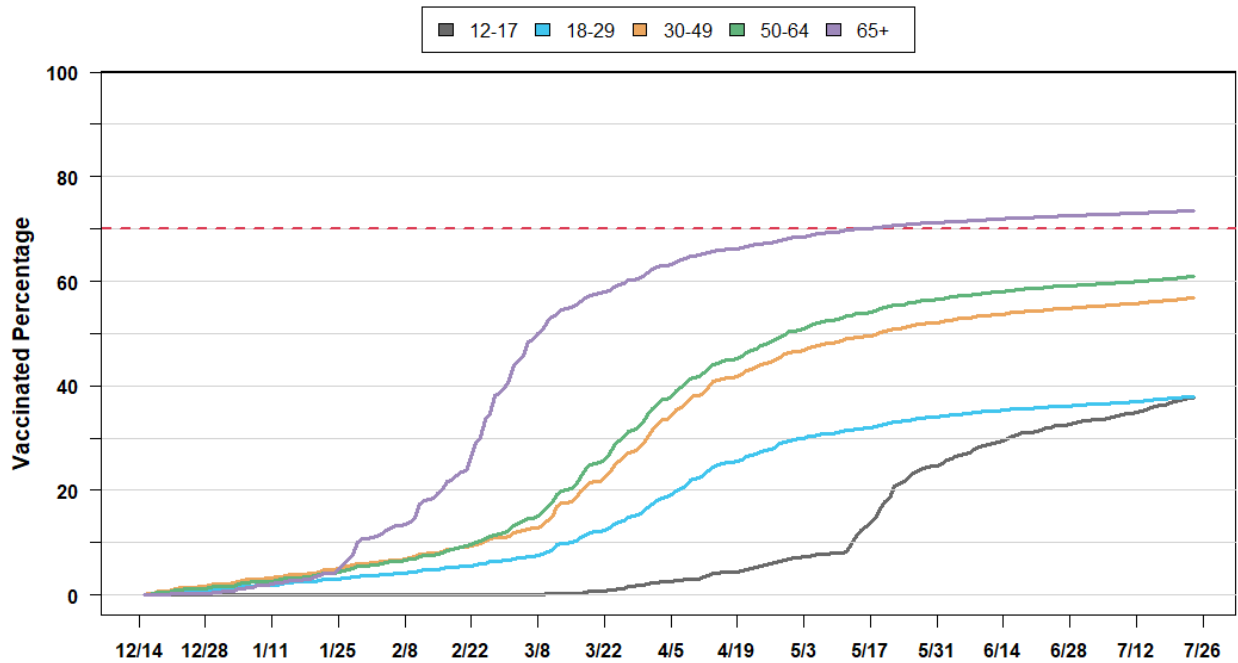
Population totals are based on 2019 data from the National Center for Health Statistics (NCHS). Please note - this is a change from previous reports which used Census data to estimate population by age group.

6.4 VACCINE DISTRIBUTION BY DEMOGRAPHIC SUBGROUP - SOURCE: VIIS

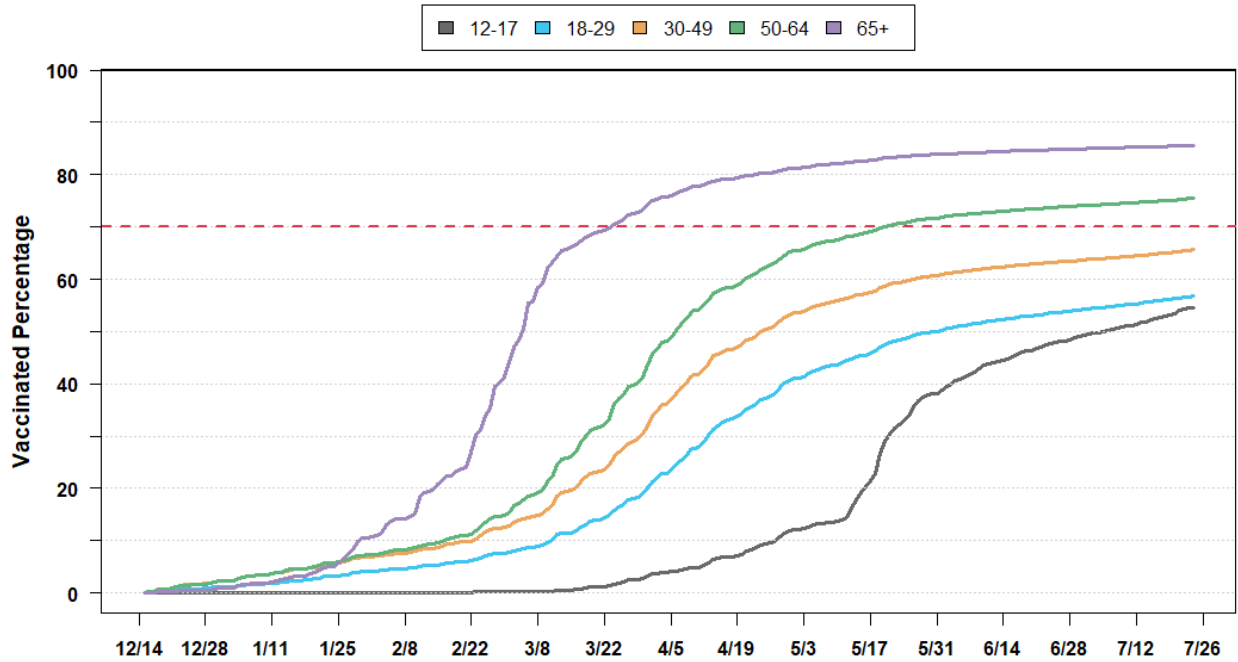


- The pie charts above indicate that a majority of vaccinated individuals in both Richmond and Henrico have been female.
- The time series plots below demonstrate that individuals 65 and over in Richmond, 50 to 64 in Henrico, and 65 and over in Henrico have all reached the 70% vaccinated threshold.
- Individuals 30 to 49 in Henrico are close to reaching the 70% threshold.
- Generally speaking, older age groups have achieved higher vaccination rates and Henrico age groups have achieved higher vaccination rates than their corresponding Richmond age groups.
- After later access to vaccination, individuals 12 to 17 have seen a notable increase in vaccination rates while individuals 18 to 29 have slowed in their rate of new vaccinations, leading to near equivalent rates at this point in both Richmond and in Henrico.

Vaccinated Percentage for Eligible Individuals by Age Group, Based on Reported Data in Richmond (N = 109,311)



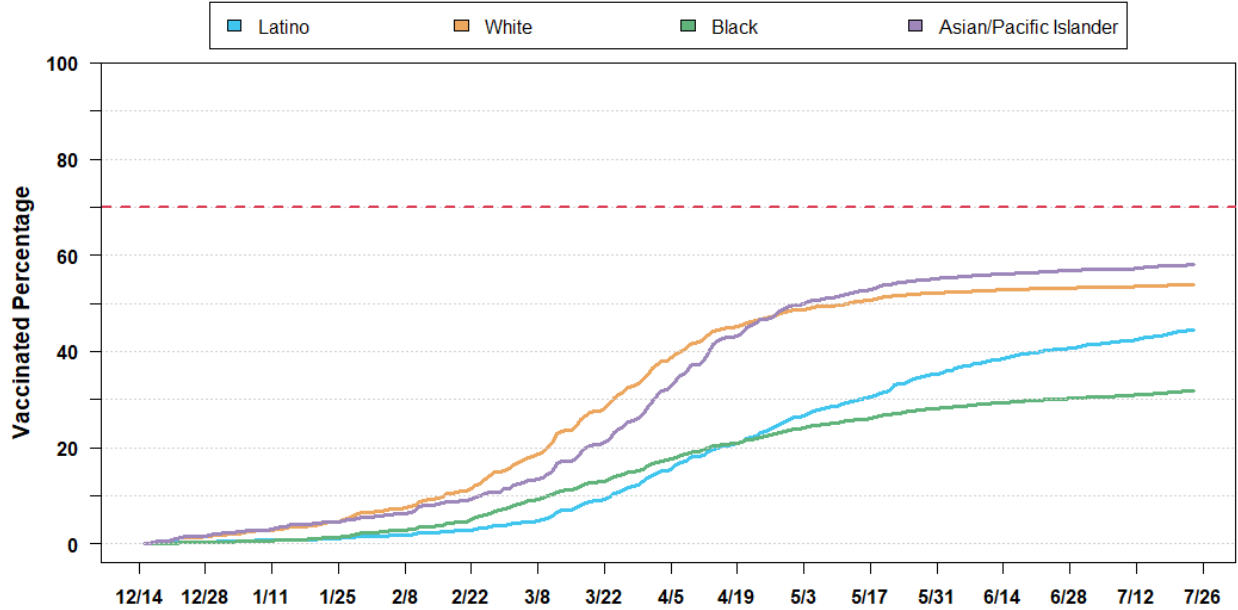
**Vaccinated Percentage for Eligible Individuals by Age Group,
Based on Reported Data in Henrico (N = 195,104)**



UPDATE: Population estimates for race and ethnicity subgroups have been changed for this report from the U.S. Census Bureau’s American Community Survey (ACS) 2019 5-year estimates to the National Center for Health Statistics (NCHS) 2019 estimates to align with estimates used by other VDH metrics. This change also involves new race and ethnicity categories: Latino or Hispanic, Non-Hispanic White, Black or African-American, Asian or Pacific Islander, and Native American. Racial groups such as Two or more Races and Other Race have been excluded from the following metrics as they are without corresponding NCHS estimates, but the counts for these groups can be seen in the footnotes immediately below.

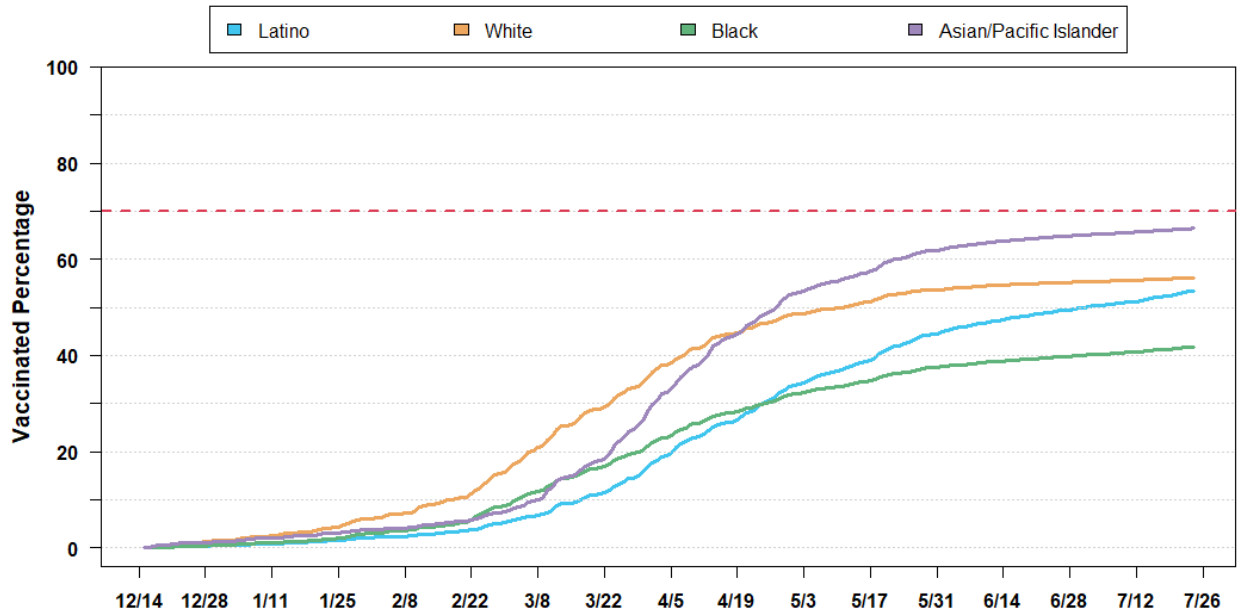
- The time series plots below demonstrate generally higher vaccination rates among White individuals and Asian or Pacific Islander individuals in both Richmond and Henrico
- White individuals maintained the highest vaccination rates through mid-April before Asian or Pacific Islander individuals surpassed them for the highest rates.
- In past months, vaccination rates of both Latino and Black individuals have been lower, with Black individuals comprising the lowest vaccine uptake as of today.
- Latino individuals saw an acceleration in vaccination rates beginning in early March after a slow start and have since surpassed Black individuals and began to approach the higher rates of Asian or Pacific Islander and White individuals.
- Notably, no race or ethnicity group has achieved the 70% vaccinated threshold for eligible individuals in either Richmond or in Henrico, though Asian or Pacific Islander individuals in Henrico are close to this goal.

**Vaccinated Percentage for Eligible Individuals by Race/Ethnicity,
Based on Reported Data in Richmond (N = 109,311)**



Vaccination rates by subgroup are underestimates due to individuals not disclosing race/ethnicity (5915 vaccinations).
American Indian individuals (538 vaccinations) excluded due to unreliable vaccination rate calculations.

**Vaccinated Percentage for Eligible Individuals by Race/Ethnicity,
Based on Reported Data in Henrico (N = 195,105)**



Vaccination rates by subgroup are underestimates due to individuals not disclosing race/ethnicity (13185 vaccinations).
American Indian individuals (1301 vaccinations) excluded due to unreliable vaccination rate calculations.