

WEEKLY COVID-19 REPORT FOR EXTERNAL USE

WEEK OF: MONDAY, SEPTEMBER 6, 2021

CONTENTS

KEY TAKEAWAYS	2
1.0 COVID-19 SNAP SHOT	4
1.1 TOTAL TESTS AND PERCENT POSITIVITY BY MODALITY IN RICHMOND AND HENRICO	4
1.2 CONFIRMED CASES, HOSPITALIZATIONS, FATALITIES, AND PROBABLE CASES BY COUNTY	4
1.3 CURRENT COVID-19 HOSPITALIZATIONS IN THE RICHMOND CATCHMENT AREA ON SEPTEMBER 7, 2021	5
2.0 COVID-19 CASES	6
2.1 SUMMARY OF CASES	6
2.2 CASE REPORTING TRENDS BY DATE (SOURCE-VDH WEBSITE)	6
2.4 CASES AND POPULATION PROPORTIONS BY RACE AND ETHNICITY BY COUNTY	9
3.0 HOSPITALIZATIONS & FATALITIES	10
3.1 SUMMARY OF HOSPITALIZATIONS & FATALITIES	10
3.2 COVID-19 HOSPITALIZATIONS, ICU HOSPITALIZATIONS, & VENTILATOR UTILIZATIONS IN THE RICHMOND CATCHMENT AREA	10
4.0 VACCINATION	11
4.1 VACCINE SUMMARY	11
4.2 PERCENTAGE OF VACCINATION GOALS REACHED BY POPULATION	11
4.3 VACCINATIONS BY LOCALITY AS OF SEPTEMBER 7, 2021 - SOURCE: VDH.VIRGINIA.GOV	11
4.4 VACCINE DISTRIBUTION BY AGE GROUP OVER TIME	12
4.5 VACCINE DISTRIBUTION BY RACE/ETHNICITY OVER TIME	13
4.6 VACCINE DISTRIBUTION MAPS	15

KEY TAKEAWAYS

CASES

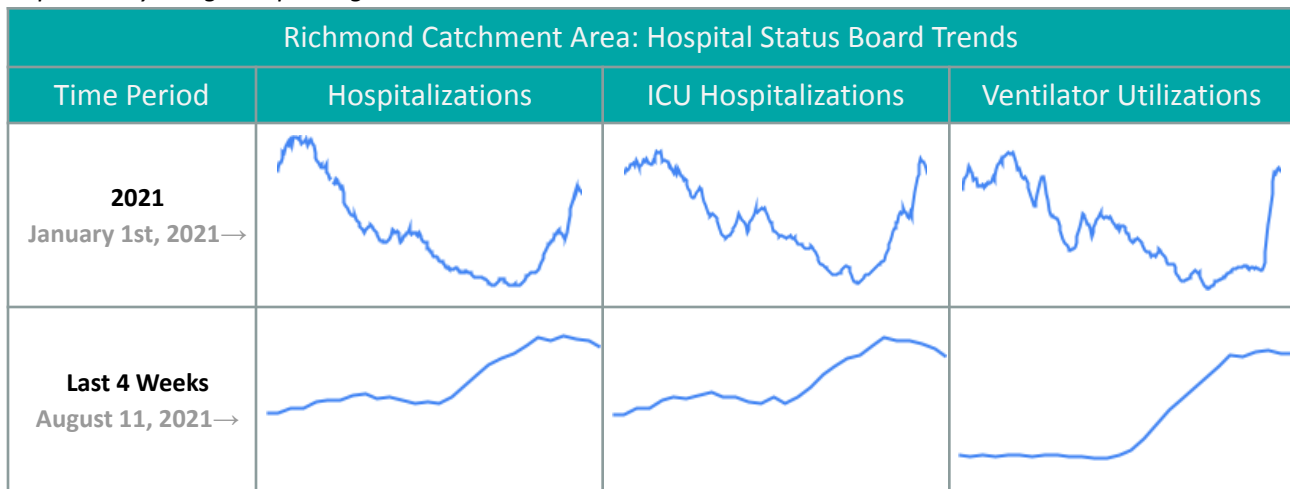
Cases in both districts have begun to **increase** over the past month, with a **7-day total case rate** of 351.51 new cases per 100,000 population in Richmond and 246.36 new cases per 100,000 population in Henrico. Both districts have community transmission levels that are considered **High**, according to the [CDC COVID Data Tracker](#).

Richmond City & Henrico County	
Demographic	Highest Proportion
Age	20-29 Year Olds
Sex	Female
Race	Black

HOSPITALIZATIONS & FATALITIES

Hospitalizations based on date of admission among Richmond residents are relatively low, although a minor spike was observed over the last week. In Henrico, **hospitalizations** are also low but increasing.

Hospitalizations & Deaths by subgroup (sex, age, and race) are reported on a monthly basis. Data may be impacted by a lag in reporting.



- **10 out of 11 hospitals in the Richmond Catchment Area are operating at a 'Normal' clinical status. 1 is operating at "full" status*

VACCINATIONS

Richmond and Henrico Health Districts are in Phase 2 of vaccination; anyone 12 or older is eligible to receive a vaccine. Pharmacies appear to be administering the largest percentage of vaccines to Richmond and Henrico residents, compared with other providers.

Local Vaccination Stats & Regional Comparison		
Location	≥ 1 Dose	Complete
Richmond City & Henrico County	58.7%	52.7%
Region	59.6%	53.7%

Vaccination Demographic Trends		
Demographic	Richmond City	Henrico County
Age Groups ≥ 70% Vaccinated	65+	30+
Sex	Female	
Race	Asian/Pacific Islander & Latino	

In both Richmond and Henrico, older age groups have consistently been vaccinated at a higher rate than younger age groups. Individuals aged 30-44 in Henrico County recently met the 70% vaccination benchmark. Section 4 includes an estimated breakdown of vaccination uptake by race and age subgroups.

1.0 COVID-19 SNAP SHOT

1.1 TOTAL TESTS AND PERCENT POSITIVITY BY MODALITY IN RICHMOND AND HENRICO

Total tests by testing modality and the associated 7-day average in percent positivity are summarized in the table below. Data are from the [VDH public dashboard](#) on September 7, 2021.

	RICHMOND CITY		HENRICO COUNTY	
	Tests	Positivity	Tests	Positivity
PCR*	291,324	14.2%	446,834	9.6%
Antigen	69,306	11.3%	131,290	10.3%
Total (PCR, antigen, and antibody)	365,522	13.7%	588,466	10.1%

1.2 CONFIRMED CASES, HOSPITALIZATIONS, FATALITIES, AND PROBABLE CASES BY COUNTY

CASE STATUS	RICHMOND CITY	HENRICO COUNTY	VIRGINIA
New cases this week (September 6)	810	815	25969
All cases	20606	30172	788917
Confirmed cases	16446	21609	597464
Hospitalizations	853	1140	32440
Deaths	248	583	10098
Probable cases	4160	8563	191453
Hospitalizations	25	48	1872
Deaths	39	71	1849
Case rate per 100,000	8942.2	9120.4	9242.8

Weekly cases added are estimated as the difference between the cases recorded from the current and prior week

*Case Rate per 100,000=(confirmed+probable)/population count *100,000.*

Population estimates for the case rate are from 2019 data compiled by the National Center for Health Statistics (NCHS).

1.3 CURRENT COVID-19 HOSPITALIZATIONS IN THE RICHMOND CATCHMENT AREA ON SEPTEMBER 7, 2021

The data included in this section comes from VHASS and it comes from the following hospitals: VCU Health System, Retreat Doctors', Bon Secours Community, CWJ Chippenham, CWJ Johnson Willis, VA Medical Center, Bon Secours St. Mary's, Henrico Doctors, and Parham Doctors, Bon Secours St. Francis, and Memorial Regional Medical Center.

	TOTAL IN USE FOR COVID-19	CURRENTLY AVAILABLE
Confirmed Hospitalizations	265	202
Pending Hospitalizations	10	
Confirmed - ICU	73	49
Pending - ICU	*	
Confirmed - Ventilators	44	275
Pending - Ventilators	*	

Within these 11 hospitals that comprise the Richmond catchment area, there are currently 202 total available hospital beds, 49 available adult ICU beds, and 275 available ventilators. Based on the VHASS hospital dashboard on September 7, 2021, 10 hospitals in the Richmond Catchment area are operating at normal clinical status. CJW Johnston Willis is operating at a full clinical status.

**A clinical status of "normal" indicates that hospital clinical resources are operating within normal conditions. A clinical status of "full" indicates that hospital clinical resources are exceeded and acceptable care cannot be provided to additional patients. Diversion or Community surge response is required.*

2.0 COVID-19 CASES

2.1 SUMMARY OF CASES

Cases in both districts have begun to **increase** over the past month, with a **7-day total case rate** of 351.51 new cases per 100,000 population in Richmond and 246.36 new cases per 100,000 population in Henrico. Additionally, in both Richmond City and Henrico County, the level of community transmission is considered **High** according to the [CDC Covid Data Tracker](#).

In both districts, females comprise a higher proportion of cases and 20-29 year olds continue to lead case counts cumulatively. Regarding race and ethnicity, the highest incidence of cases in both districts is still among Black individuals. Additionally, in both districts, the percentage of cases among the Latino population is disproportionately high cumulatively as compared to their population percentage but closer to their population percentage more recently.

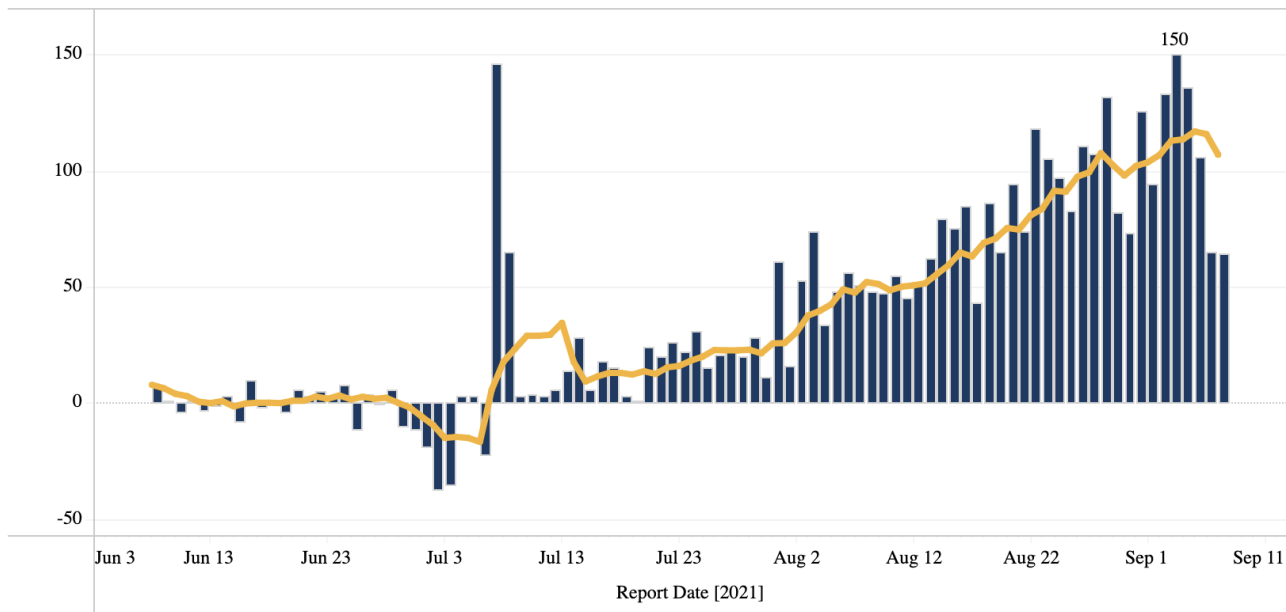
2.2 CASE REPORTING TRENDS BY DATE (SOURCE:VDH WEBSITE)

Number of New Cases Reported^	7-Day Average Number of Daily New Cases Reported	7-Day Average Number of New Daily Cases Reported, Rate per 100,000 Population	Total Number of New Cases per 100,000 Population within last 14 days
64	107	46.7	639.0

Report Date Daily Cases Counts for past 90 Days
Richmond City

Select Date Range (Affects Bar Chart)

Past 90 Days



- In Richmond, the number of daily new cases reported is influenced by cases being reallocated to different localities for data quality purposes. This explains some historic “negative” cases (cases reallocated away from Richmond outnumbering actual new cases) and unusual positive spikes in early July (cases reallocated to Richmond from elsewhere added on top of actual new cases).
- From late July through the beginning of September, daily new cases have been generally increasing, with some fluctuations.
- All data is subject to lags in reporting.

Number of New Cases
Reported^

71

7-Day Average Number of
Daily New Cases Reported

110

7-Day Average Number of
New Daily Cases Reported,
Rate per 100,000 Population

33.5

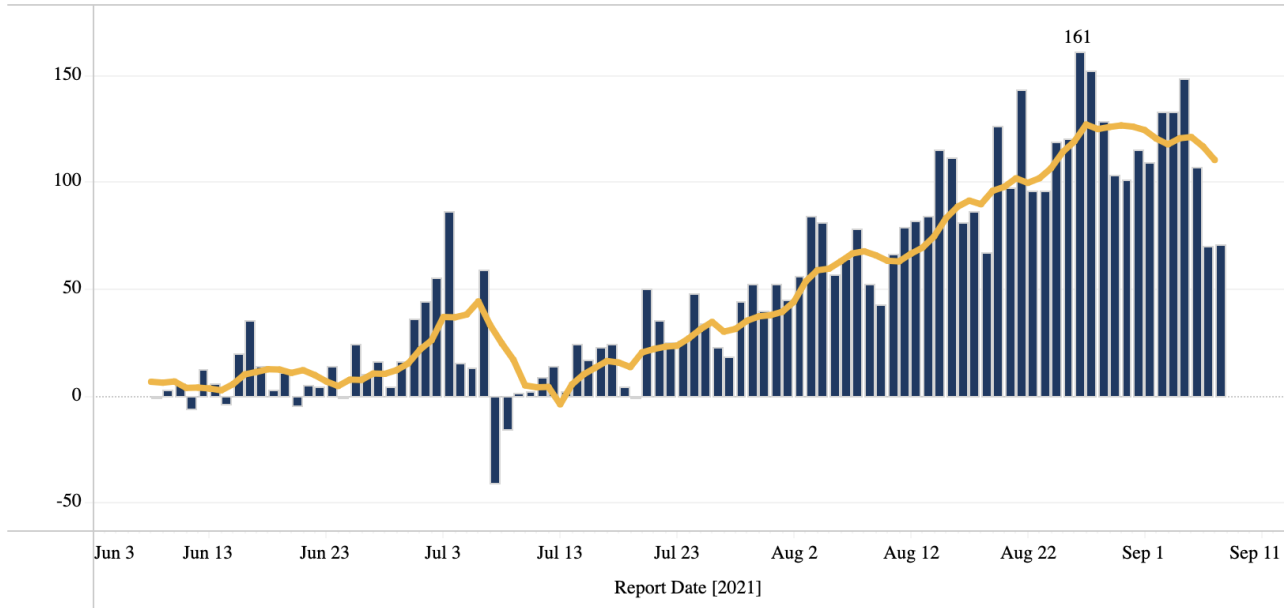
Total Number of New Cases
per 100,000 Population
within last 14 days

501.4

Report Date Daily Cases Counts for past 90 Days
Henrico

Select Date Range (Affects Bar Chart)

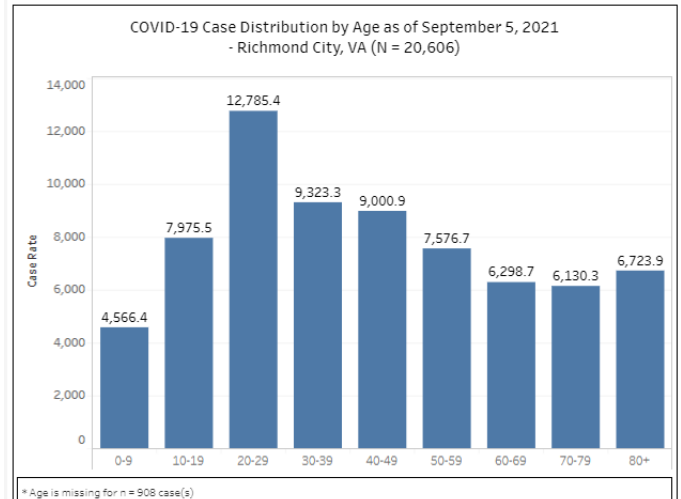
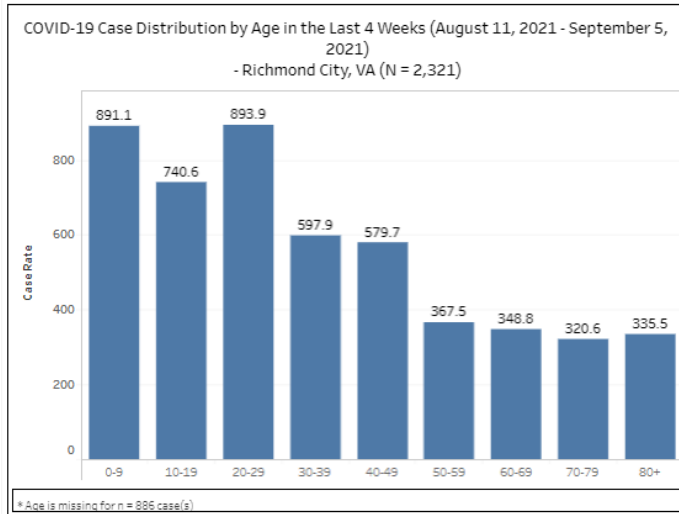
Past 90 Days



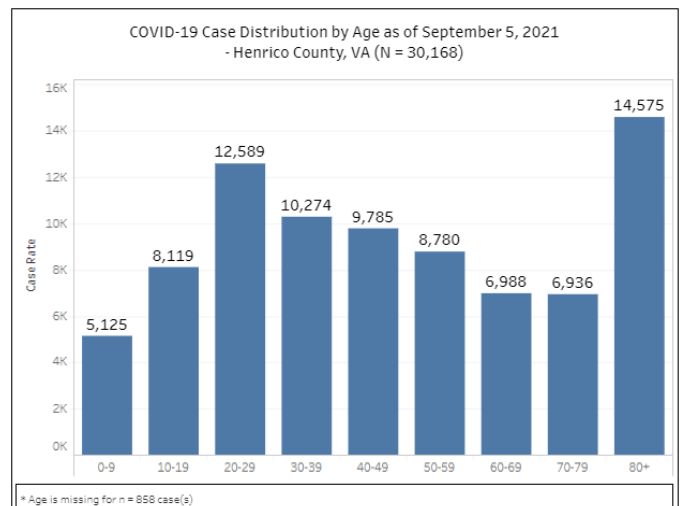
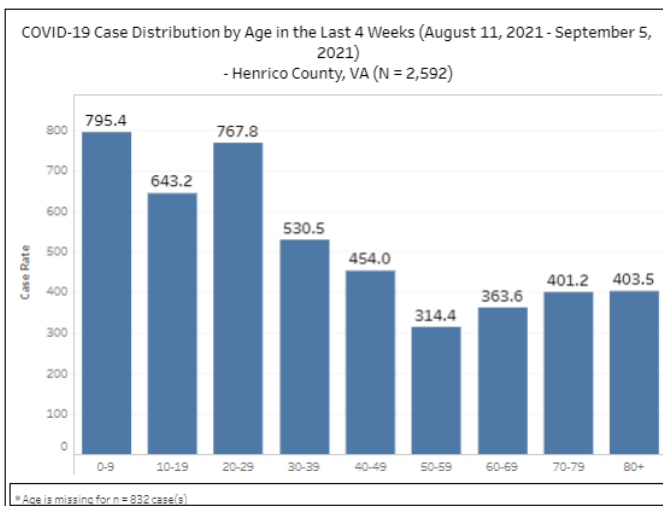
- In Henrico, the number of new cases reported per day has also been fluctuating due to recent efforts to reallocate older cases to appropriate localities.
- From the middle of July through late August, daily new cases have generally been increasing, with a fluctuating plateau occurring in the last week.
- All data is subject to lags in reporting.

2.3 CASES BY AGE GROUP BY COUNTY

Population totals are based on 2019 data from the National Center for Health Statistics (NCHS). Please note - this is a change from previous reports which used Census data to estimate population by age group.



- In Richmond City, individuals aged 0-9 have the highest case rates in the last four weeks, while individuals aged 20-29 have the highest case rate cumulatively.
- Case burdens for individuals 50 and over are notably down in the last four weeks compared to cumulatively.

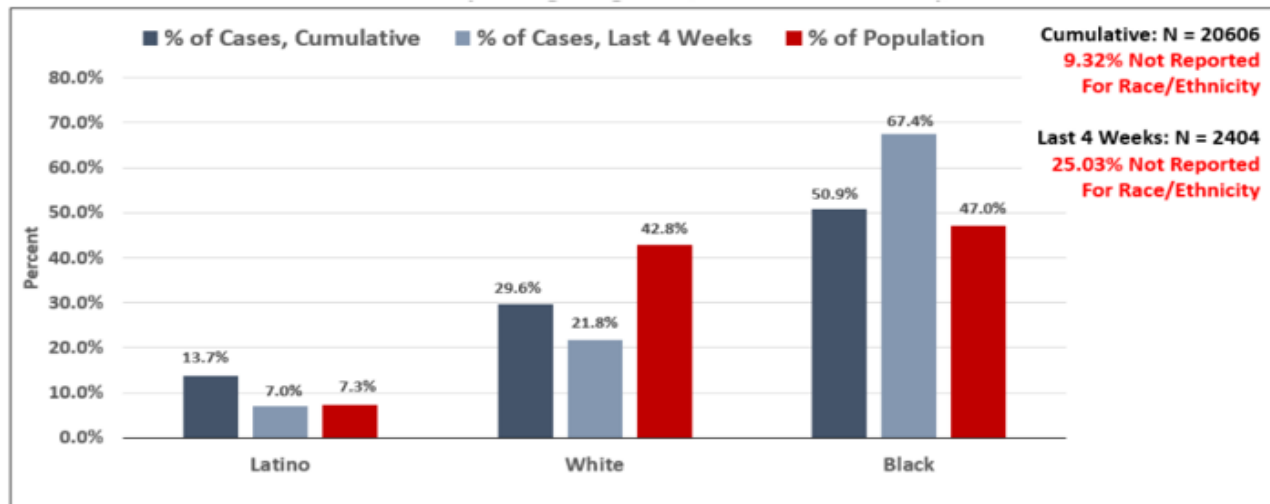


- In Henrico, case rates over the past four weeks show a high frequency of cases occurring in individuals aged 0-9, followed by those aged 20-29 and 30-39, whereas cumulative case rates indicate a large burden being placed on individuals aged 20-29 and those 80 and over.
- Case rates are down for older age groups (60 and over), with a notable drop for individuals 70 to 79.

2.4 CASES AND POPULATION PROPORTIONS BY RACE AND ETHNICITY BY COUNTY

Population totals are based on 2019 data from the National Center for Health Statistics (NCHS).

COVID-19 Case Distribution by Race and Ethnicity in the Last 4 Weeks (August 11, 2021 – September 5, 2021) and Cumulatively through September 5, 2021 – Richmond City, VA



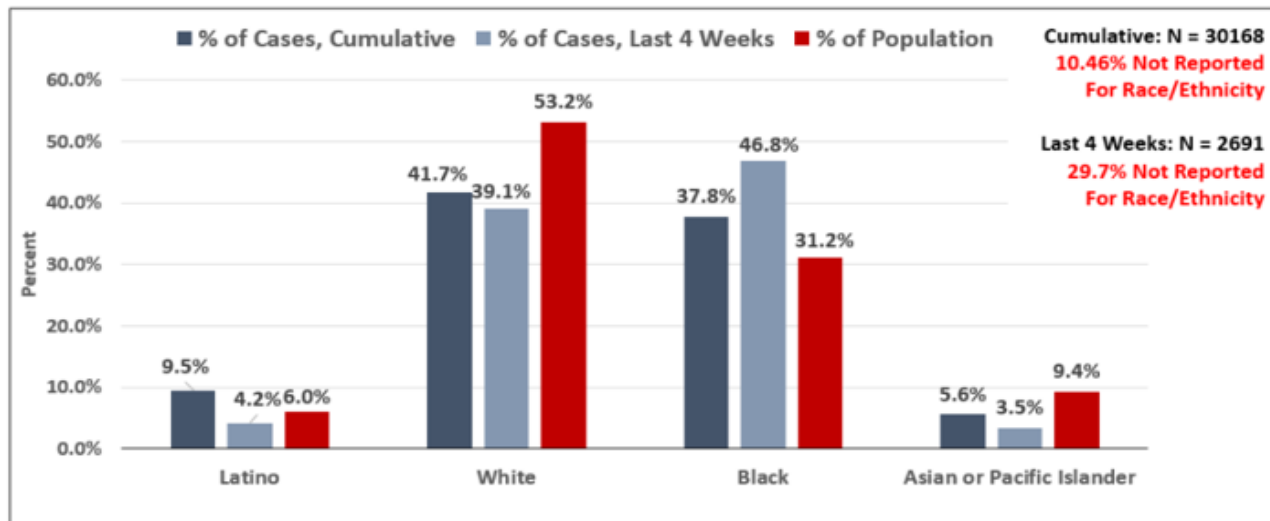
* NCHS population estimates are not available for Two or More Races (235 total cases) or Other Race (394 total cases) and thus they are absent from the plots.

* Missing and Unknown Ethnicities were assumed to be of Non-Hispanic ethnicity.

* Cases among individuals identifying as Asian or Pacific Islander or Native American are suppressed (counts < 5)

- In Richmond, the case burden for Black individuals over the last 4 weeks (67.4%) is disproportionately high relative to their population percentage (47%), while the case burden for White individuals is disproportionately low (21.8%) relative to their population percentage (42.8%).

COVID-19 Case Distribution by Race and Ethnicity in the Last 4 Weeks (August 11, 2021 – September 5, 2021) and Cumulatively through September 5, 2021 – Henrico County, VA



* NCHS population estimates are not available for Two or More Races (375 total cases) or Other Race (849 total cases) and thus they are absent from the plots.

* Missing and Unknown Ethnicities were assumed to be of Non-Hispanic ethnicity.

* Cases among individuals identifying as Native American are suppressed (counts < 5)

- In Henrico in the last four weeks, the case burden for Black individuals (46.8%) is higher than the proportion of the population (31.2%). Meanwhile, the case burdens for White individuals (39.1%) and Asian or Pacific Islander individuals (3.5%) are relatively low compared to their proportions of the population (53.2% and 9.4%, respectively). Recent cases among Latino individuals have been proportionally low (4.2%) as compared to their population proportion (6%), despite having a proportionally higher cumulative case burden (9.5%).

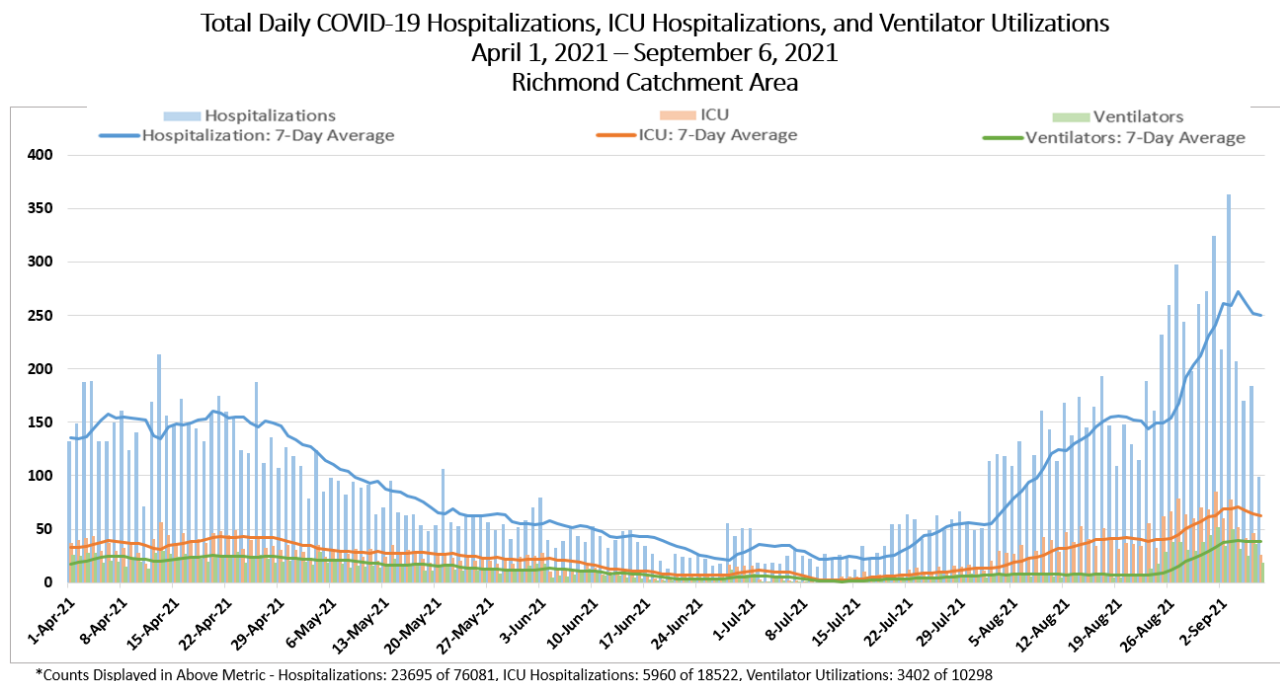
3.0 HOSPITALIZATIONS & FATALITIES

3.1 SUMMARY OF HOSPITALIZATIONS & FATALITIES

Hospitalizations based on date of admission among Richmond residents are relatively low, although a minor spike was observed over the last week. In Henrico, **hospitalizations** are also low but increasing.

Looking more broadly at health systems within the Richmond catchment area, hospitalizations, ICU hospitalizations, and ventilator utilizations are increasing, but are generally at a lower level as compared to January of this year. *Hospitalizations by subgroup (sex, age, and race) are reported on a monthly basis.*

3.2 COVID-19 HOSPITALIZATIONS, ICU HOSPITALIZATIONS, & VENTILATOR UTILIZATIONS IN THE RICHMOND CATCHMENT AREA



- According to **VHASS** Hospitalizations, ICU Hospitalizations, and Ventilator Utilizations in the Richmond Catchment area have seen upward trends over the course of August, with a surge across the board in the last week.

4.0 VACCINATION

4.1 VACCINE SUMMARY

Richmond and Henrico Health Districts are in Phase 2 of vaccination. Anyone 12 or older is eligible to receive a vaccine. As of September 6, 59.5% of the region's population has received at least one dose of the vaccine and 53.5% of the region's population has been fully vaccinated. Approximately 59% of Richmond and Henrico's combined population has received at least one dose and 53% of the two districts combined population has been fully vaccinated. Cumulatively, local health departments have administered the largest percentage of vaccines to Richmond and Henrico residents, compared with other providers. However, pharmacies have delivered the majority of vaccines in the last 4 week.

The majority of vaccine recipients in both districts have been female. In both Richmond and Henrico, older age groups have consistently been vaccinated at a higher rate than younger age groups, with individuals in Richmond 65 and over, in Henrico 65 and over, and in Henrico between 50 and 64 all reaching the 70% goal for vaccinated percentage. This section includes an estimated breakdown of vaccination uptake by race, sex, and age subgroups.

4.2 PERCENTAGE OF VACCINATION GOALS REACHED BY POPULATION

		POPULATION	POPULATION GOAL (70%)	PEOPLE WITH AT LEAST ONE DOSE	PEOPLE FULLY VACCINATED
Richmond	12-17	11,150	7,805	5,510 (49.4%)	4,404 (39.5%)
	18+	190,750	133,525	113,496 (59.5%)	101,450 (53.2%)
	65+	31,809	22,266	24,136 (75.9%)	22,264 (70%)
Henrico	12-17	25,954	18,168	17,290 (66.6%)	14,582 (56.2%)
	18+	256,660	179,662	193,184 (75.3%)	175,202 (68.3%)
	65+	52,720	36,904	46,294 (87.8%)	43,398 (82.3%)

Population totals are based on 2019 data from the National Center for Health Statistics (NCHS). Please note - this is a change from previous reports which used Census data to estimate population by age group.

Nationally, the Biden administration is using the **percentage of adults (individuals 18 and over)** to track progress in vaccination. Though the percentage of the population needed to reach herd immunity is still uncertain, in line with federal guidance, we have set an overall goal of vaccinating 70% of the population. First and second doses of the Pfizer vaccine must be administered at least 21 days apart. First and second doses of the Moderna vaccine must be administered at least 28 days apart. People who received the Johnson & Johnson vaccine, which is a single dose, are included in the count of people with at least one dose *and* the count of people who are fully vaccinated.

4.3 VACCINATIONS BY LOCALITY AS OF SEPTEMBER 7, 2021 - SOURCE: [VDH.VIRGINIA.GOV](https://www.vdh.virginia.gov)

HEALTH DISTRICT	LOCALITY	TOTAL POPULATION	PEOPLE WITH AT LEAST ONE DOSE	PEOPLE FULLY VACCINATED
Chesterfield	Chesterfield	352,802	213,167	190,929
	Colonial Heights	17,370	9,172	7,943
	Powhatan	29,652	15,657	14,139
Chickahominy	Charles City	6,963	4,120	3,815
	Goochland	23,753	16,277	15,193
	Hanover	107,766	68,433	63,353
	New Kent	23,091	12,662	11,595
Henrico	Henrico	330,818	210,474	189,784
Richmond	Richmond City	230,436	119,006	105,854
Total		1,122,651	668,968	602,605

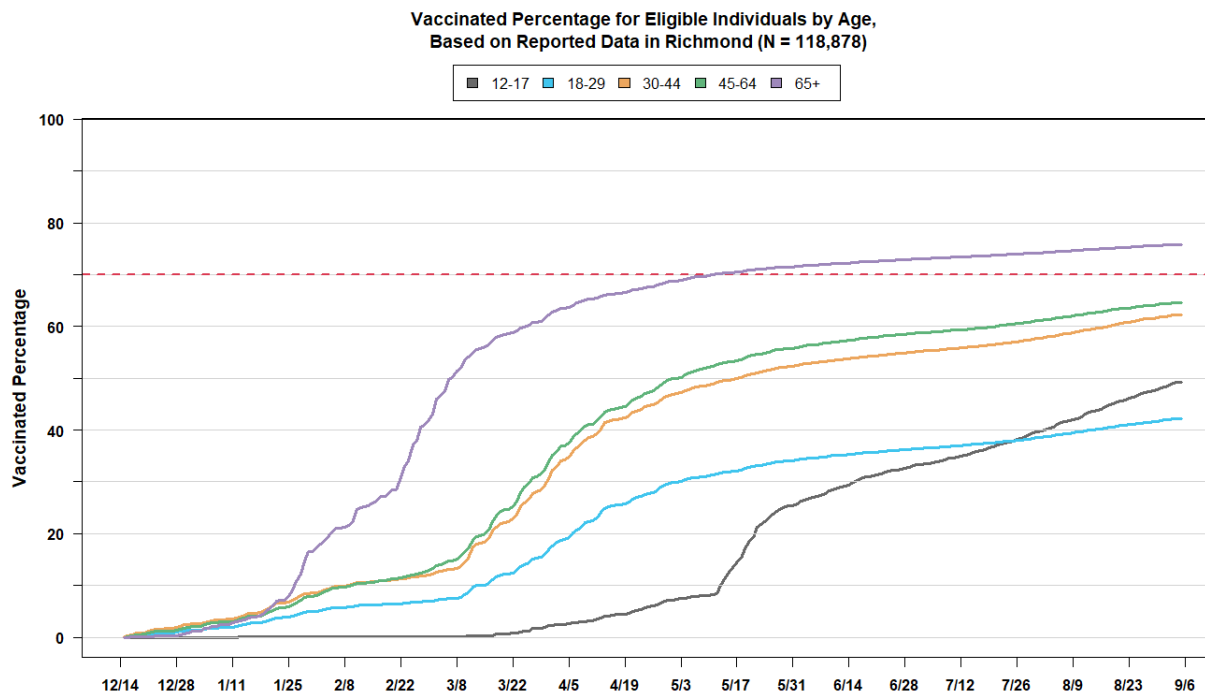
Population totals are based on 2019 data from the National Center for Health Statistics (NCHS). Please note - this is a change from previous reports which used Census data to estimate population by age group.

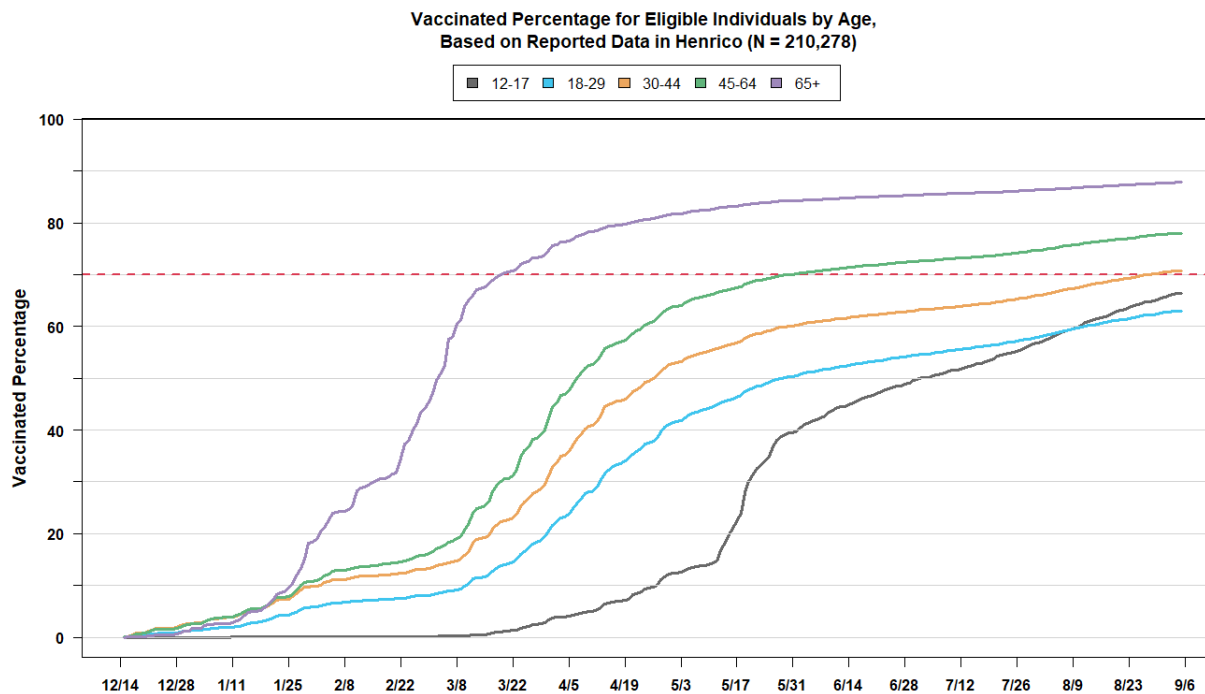
4.4 VACCINE DISTRIBUTION BY AGE GROUP OVER TIME

Population estimates for age subgroups and for race and ethnicity subgroups have been changed for this report from the U.S. Census Bureau's American Community Survey (ACS) 2019 5-year estimates to the National Center for Health Statistics (NCHS) 2019 estimates to align with estimates used by other VDH metrics. This change also involves new race and ethnicity categories: Latino or Hispanic, Non-Hispanic White, Black or African-American, Asian or Pacific Islander, and Native American. Racial groups such as Two or more Races and Other Race have been excluded from the following metrics as they do not have corresponding NCHS estimates, but the counts for these groups can be seen in the footnotes for those plots.

The following charts track vaccination rates by age group over time since vaccinations first began in mid-December.

- The time series plots below demonstrate that individuals 65 and over in Richmond, 30 to 44 in Henrico, 45 to 64 in Henrico, and 65 and over in Henrico have all reached the 70% vaccinated threshold.
- Individuals 12 to 17 in Henrico are close to the 70% threshold.
- Generally speaking, older age groups within a locality have achieved higher vaccination rates than younger age groups in the same locality.
- Henrico age groups have achieved higher vaccination rates than their corresponding Richmond age groups and many younger age groups in Henrico have achieved higher rates than older age groups in Richmond.
- After later access to vaccination, individuals 12 to 17 have seen a notable increase in vaccination rates while individuals 18 to 29 have slowed in their rate of new vaccinations, leading to the younger age group surpassing the older one in both Richmond and in Henrico over this past month.
- All data is subject to lags in reporting, particularly in recent weeks.

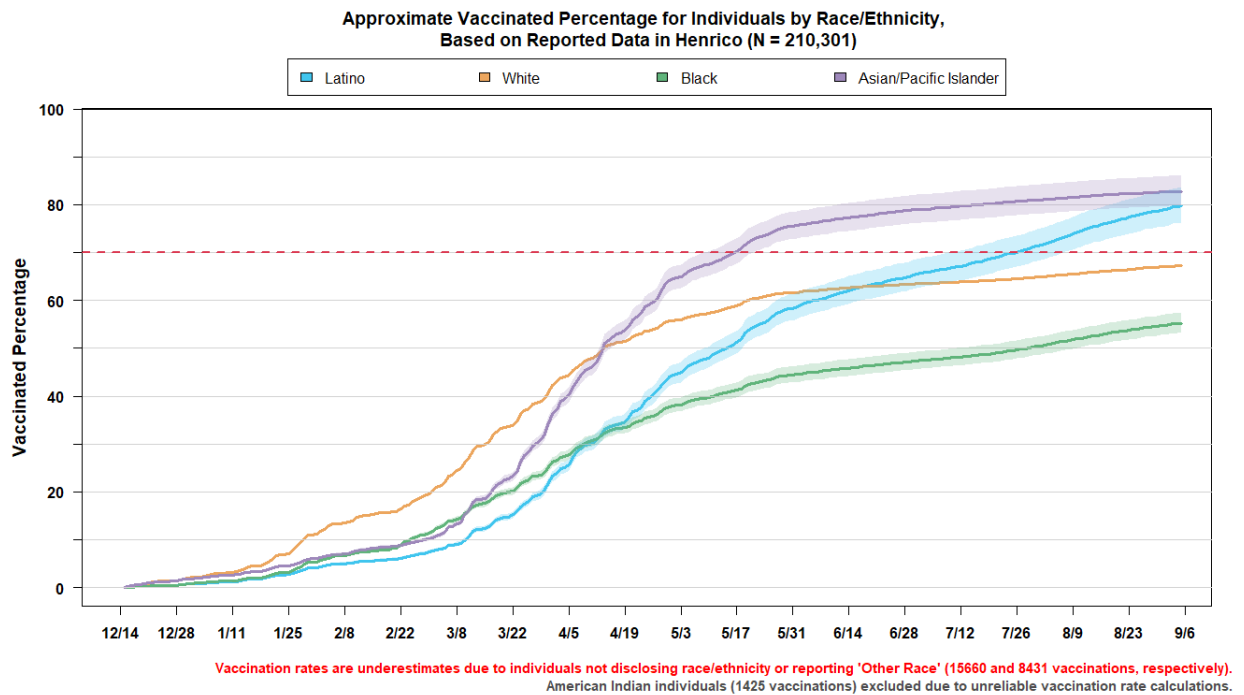
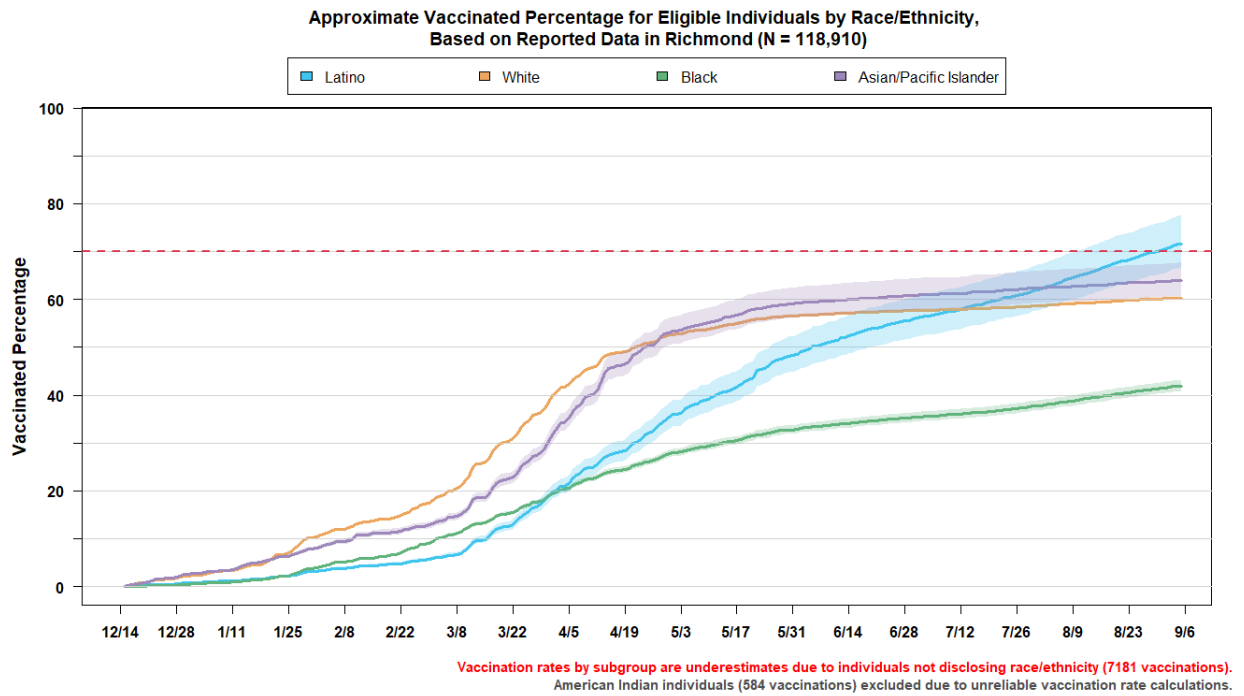




4.5 VACCINE DISTRIBUTION BY RACE/ETHNICITY OVER TIME

The following charts track vaccination rates by race and ethnicity over time since vaccinations first began in mid-December.

- The time series plots below demonstrate that through spring, White individuals and Asian or Pacific Islander individuals generally had higher vaccination rates in both Richmond and Henrico
- White individuals maintained the highest vaccination rates through early April in Richmond and late April in Henrico before Asian or Pacific Islander individuals surpassed them for the highest rates.
- In early months, vaccination rates of both Latino and Black individuals were lower, with Black individuals still comprising the lowest vaccine uptake as of today.
- Latino individuals saw an acceleration in vaccination rates beginning in early March after a slow start and have since surpassed White individuals in vaccine uptake in both Richmond and Henrico. They also possess the highest vaccination rate overall in Richmond and are right at the 70% vaccination goal (though still within margin of error).
- In Henrico, Asian or Pacific Islander individuals and Latino individuals have already surpassed the 70% vaccination goal, with White individuals not far from this threshold.
- Vaccination rates are notably lower in both Richmond and Henrico for Black individuals, well short of the 70% goal.
- All data is subject to lags in reporting, particularly in recent weeks.



4.6 VACCINE DISTRIBUTION MAPS

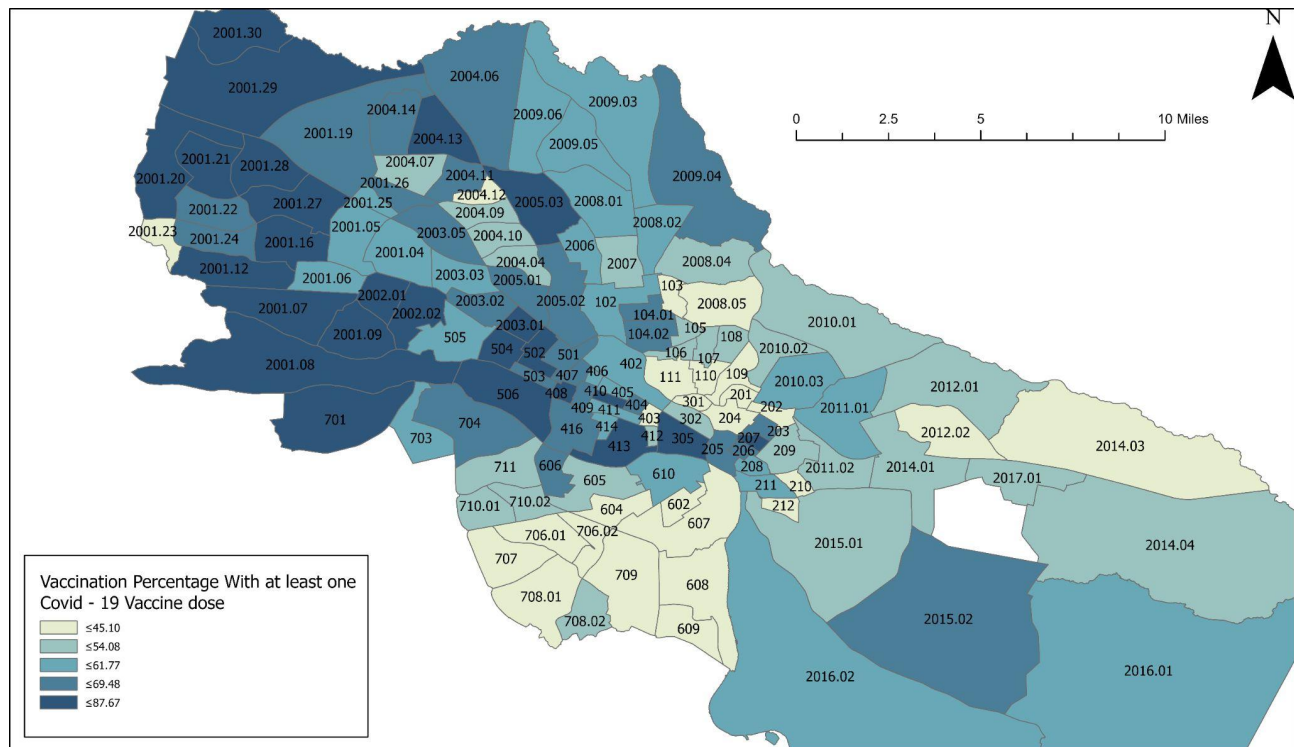
Below are maps that compare vaccination uptake percentage and COVID-19 burden by census tract. The data collected is consistent with statewide and national data trends; lower income communities of color tend to experience more severe outcomes of COVID-19, yet are disproportionately undervaccinated. RHHD monitors this data as part of its equity-driven approach; this data is used to assist program managers in strategically standing up vaccination opportunities, outreach, and education efforts in areas that are in highest need.

NOTE: We were unable to create a newly updated map this week - In lieu of this we have provided this table with updated data from the 5 highest and lowest census tracts by vaccination uptake across Henrico and Richmond.

Lowest Vaccine Uptake as of 9/7		Highest Vaccination uptake as of 9/7	
Census Tracts	% At Least One Dose	Census Tract	% At Least One Dose
403	17.72%	2001.21	81.15%
201	19.61%	2004.13	81.77%
301	23.11%	408	83.46%
204	23.71%	504	84.13%
202	23.83%	2001.29	88.14%

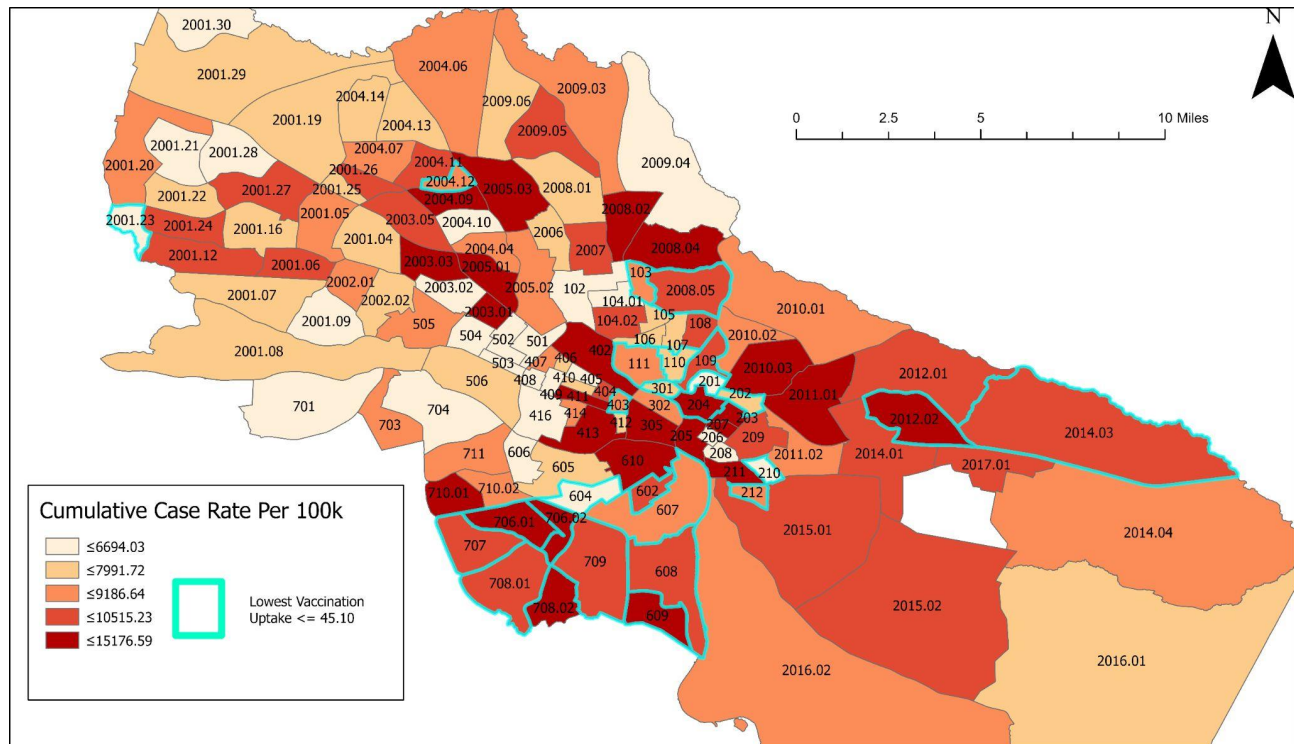
These percentages are estimations, and are solely intended for use in the planning and facilitation of outreach events.

*Population Percentage Vaccinated by Census Tract
Richmond City, VA & Henrico County, VA (August 30, 2021)*

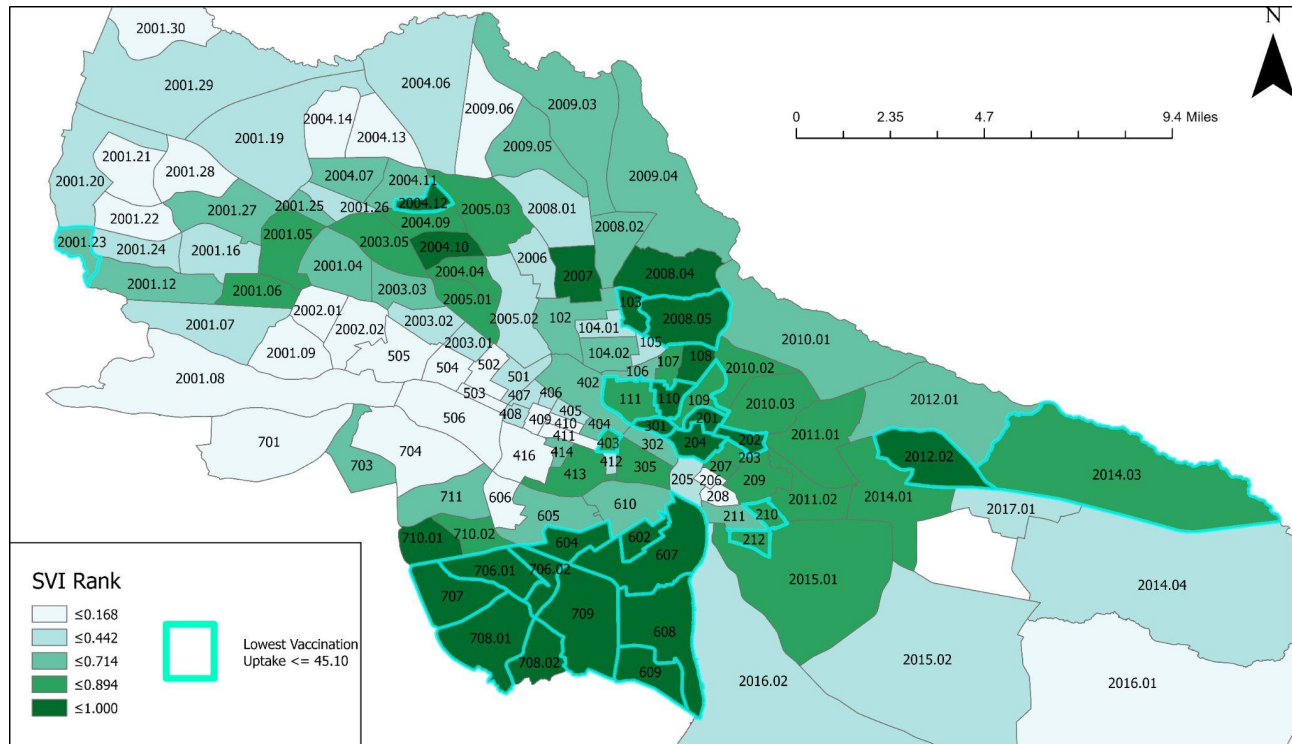


Current data suggests that vaccination rates still vary significantly at the census tract level. With the highest uptake percentage (87.67%) seen in Census Tract 2001.29, and the lowest uptake percentage (17.70%) seen in Census Tract 403.

*COVID-19 Case Rate & Low Vaccination Uptake by Census Tract
Richmond City, VA & Henrico County, VA (August 30, 2021)*



Social Vulnerability and Low Vaccination Uptake by Census Tract Richmond City, VA & Henrico County, VA (August 30, 2021)



- **Social vulnerability** is based on the CDC's [Social Vulnerability Index](#), last updated in 2018.
- **COVID-19 vaccination percentages** reflect the percentage of the **Total Population** within each tract that has been vaccinated. Data are sourced from the Virginia Immunization Information System (VIIS).
- **COVID-19 case rates** reflect **Cumulative** cases per 100,000 census tract population and are sourced from the Virginia Electronic Disease Surveillance System (VEDSS).
- **Population estimates** are from the US Census 2019 ACS Community Survey 5-year estimates.
- SVI, vaccination percentage, and case rates are visualized on these maps using the [quantiles classification](#) method, dividing the range into 5 groups, each containing the same number of observations (census tracts).