

# WEEKLY COVID-19 REPORT FOR EXTERNAL USE

WEEK OF: MONDAY, OCTOBER 11, 2021

<b>KEY TAKEAWAYS</b>	<b>2</b>
<b>1.0 COVID-19 SNAP SHOT</b>	<b>4</b>
1.1 Total Tests & Percent Positivity by Modality in Richmond and Henrico	4
1.2 Confirmed Cases, Hospitalizations, Fatalities, & Probable Cases by County	4
1.3 Current COVID-19 Richmond Catchment Area Hospitalizations	5
<b>2.0 COVID-19 CASES</b>	<b>6</b>
2.1 Summary of Cases	6
2.2 Case Reporting Trends by Date	6
2.3 Cases by Age Group by County	8
2.4 Cases & Population Proportions by Race & Ethnicity by County	9
<b>3.0 Hospitalizations &amp; Fatalities</b>	<b>10</b>
3.1 Summary of Hospitalizations & Fatalities	10
3.2 COVID-19 Hospitalization, ICU, & Ventilator Utilization (VHASS)	10
<b>4.0 VACCINATION</b>	<b>11</b>
4.1 Vaccine Summary	11
4.2 Percentage of Vaccination Goals Reached by Population	11
4.3 Vaccinations by Locality as of October 11, 2021	12
4.4 Vaccine Distribution by Age Group over Time	12
4.5 Vaccine Distribution by Race/Ethnicity over Time	14
4.6 Vaccine Distribution Maps	15
Population Percentage Vaccinated by Census Tract	15
COVID-19 Case Rate & Low Vaccination Uptake by Census Tract	16
Social Vulnerability & Low Vaccination Uptake by Census Tract	17

## KEY TAKEAWAYS

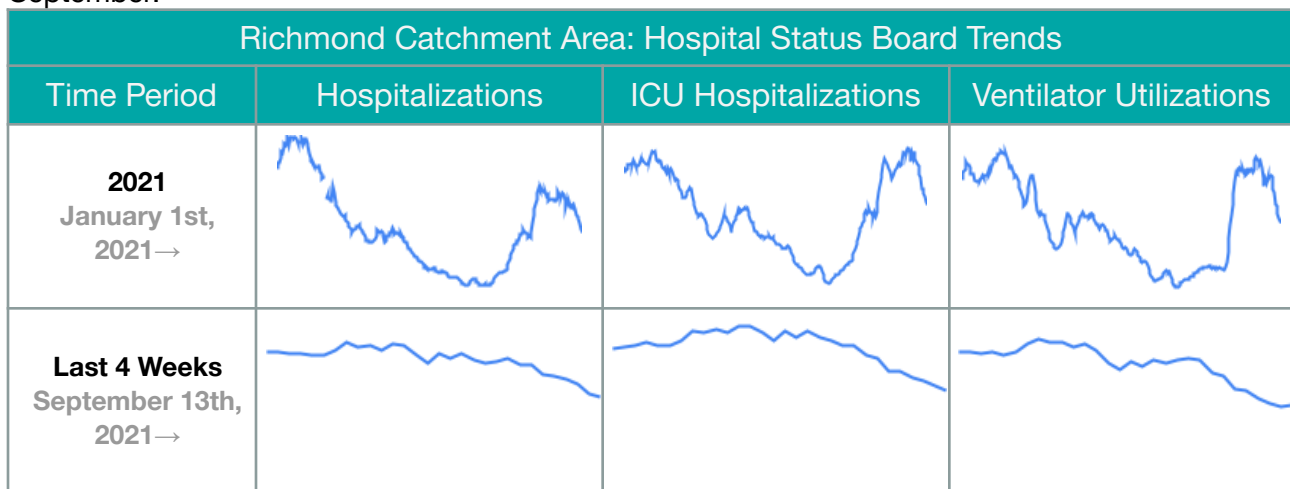
### CASES

Cases in both districts have begun to **decrease** over the past month; for more information please see section 2.0 *COVID-19 Cases* (p. 7). During the past week, the **7-day total case rate** in Richmond decreased from 200.92 to **180.09** new cases per 100,000 population. In Henrico, however, this past week saw the 7-day total case rate rise from 167.16 to **172.60** new cases per 100,000 population. Additionally, in both Richmond City and Henrico County, the level of community transmission is considered High according to the [CDC Covid Data Tracker](#).

Richmond City & Henrico County	
Demographic	Highest Proportion
<b>Age</b>	20-29 Year Olds 80+
<b>Sex</b>	Female
<b>Race</b>	Black

### HOSPITALIZATIONS & FATALITIES

**Hospitalizations** based on confirmed dates of admission among both Richmond City and Henrico County residents have begun to decrease following recent upticks. **Fatalities** among Richmond City residents and Henrico County are relatively low moving into the last week of September.



- *\*10 out of 11 hospitals in the Richmond Catchment Area are operating at a 'Normal' clinical status. 2 are operating at "full" status, 1 is operating at a status of "Special Diversion"*

## VACCINATIONS

Richmond and Henrico Health Districts are in Phase 2 of vaccination; anyone 12 or older is eligible to receive a vaccine. Pharmacies appear to be administering the largest percentage of vaccines to Richmond and Henrico residents, compared with other providers.

Local Vaccination Stats & Regional Comparison		
Location	≥ 1 Dose	Complete
<b>Richmond City &amp; Henrico County</b>	<b>60.8%</b>	<b>55.2%</b>
<b>Region</b>	61.7%	56.2%

Vaccination Demographic Trends		
Demographic	Richmond City	Henrico County
<b>Age Groups</b> ≥ 70% Vaccinated	65+	30+
<b>Sex</b>	Female	
<b>Race</b>	Asian/Pacific Islander & Latino	

In both Richmond and Henrico, older age groups have consistently been vaccinated at a higher rate than younger age groups. Individuals aged 30-44 in Henrico County recently met the 70% vaccination benchmark. Section 4 includes an estimated breakdown of vaccination uptake by race and age subgroups.

## 1.0 COVID-19 SNAP SHOT

### 1.1 Total Tests & Percent Positivity by Modality in Richmond and Henrico

Total tests by testing modality and the associated 7-day average in percent positivity are summarized in the table below. Data are from the [VDH public dashboard](#) on October 11, 2021.

	RICHMOND CITY		HENRICO COUNTY	
	Tests	Positivity	Tests	Positivity
PCR*	314,902	7.9%	487,575	5.5%
Antigen	80,647	4.3%	155,680	5.1%
Total (PCR, antigen, and antibody)	400,668	7.1%	654,097	5.6%

### 1.2 Confirmed Cases, Hospitalizations, Fatalities, & Probable Cases by County

CASE STATUS	RICHMOND CITY	HENRICO COUNTY	VIRGINIA
New cases this week (October 12)	607	801	18529
All cases	23337	33460	895619
Confirmed cases	18307	23585	667908
Hospitalizations	896	1181	35421
Deaths	282	624	11123
Probable cases	5030	9875	227711
Hospitalizations	24	53	2093
Deaths	47	76	2096
Case rate per 100,000	10127.3	10114.3	10492.8

*Weekly cases added are estimated as the difference between the cases recorded from the current and prior week*

*Case Rate per 100,000=(confirmed+probable)/population count \*100,000.*

*Population estimates for the case rate are from 2019 data compiled by the National Center for Health Statistics (NCHS).*

### 1.3 Current COVID-19 Richmond Catchment Area Hospitalizations

The following section utilizes data from the Virginia Healthcare Alerting & Status System (VHASS) COVID-19 Hospital Status Board. This data reflects the following hospitals in the Richmond Catchment Area (Chesterfield County, Hanover County, Henrico County, & Richmond City): VCU Health System, Retreat Doctors', Bon Secours Community, CWJ Chippenham, CWJ Johnson Willis, VA Medical Center, Bon Secours St. Mary's, Henrico Doctors, and Parham Doctors, Bon Secours St. Francis, and Memorial Regional Medical Center.

	TOTAL IN USE FOR COVID-19	CURRENTLY AVAILABLE
Confirmed Hospitalizations	230	66
Pending Hospitalizations	19	
Confirmed - ICU	58	42
Pending - ICU	*	
Confirmed - Ventilators	35	295
Pending - Ventilators	*	

Within these 11 hospitals that comprise the Richmond catchment area, there are currently 66 total available hospital beds, 42 available adult ICU beds, and 295 available ventilators. Based on the VHASS hospital dashboard on October 12th, 2021, 10 hospitals in the Richmond Catchment area are operating at normal clinical status. CJW Johnston Willis is operating at a full clinical status.

\*A clinical status of "normal" indicates that hospital clinical resources are operating within normal conditions. A clinical status of "full" indicates that hospital clinical resources are exceeded and acceptable care cannot be provided to additional patients. Diversion or Community surge response is required.

## 2.0 COVID-19 CASES

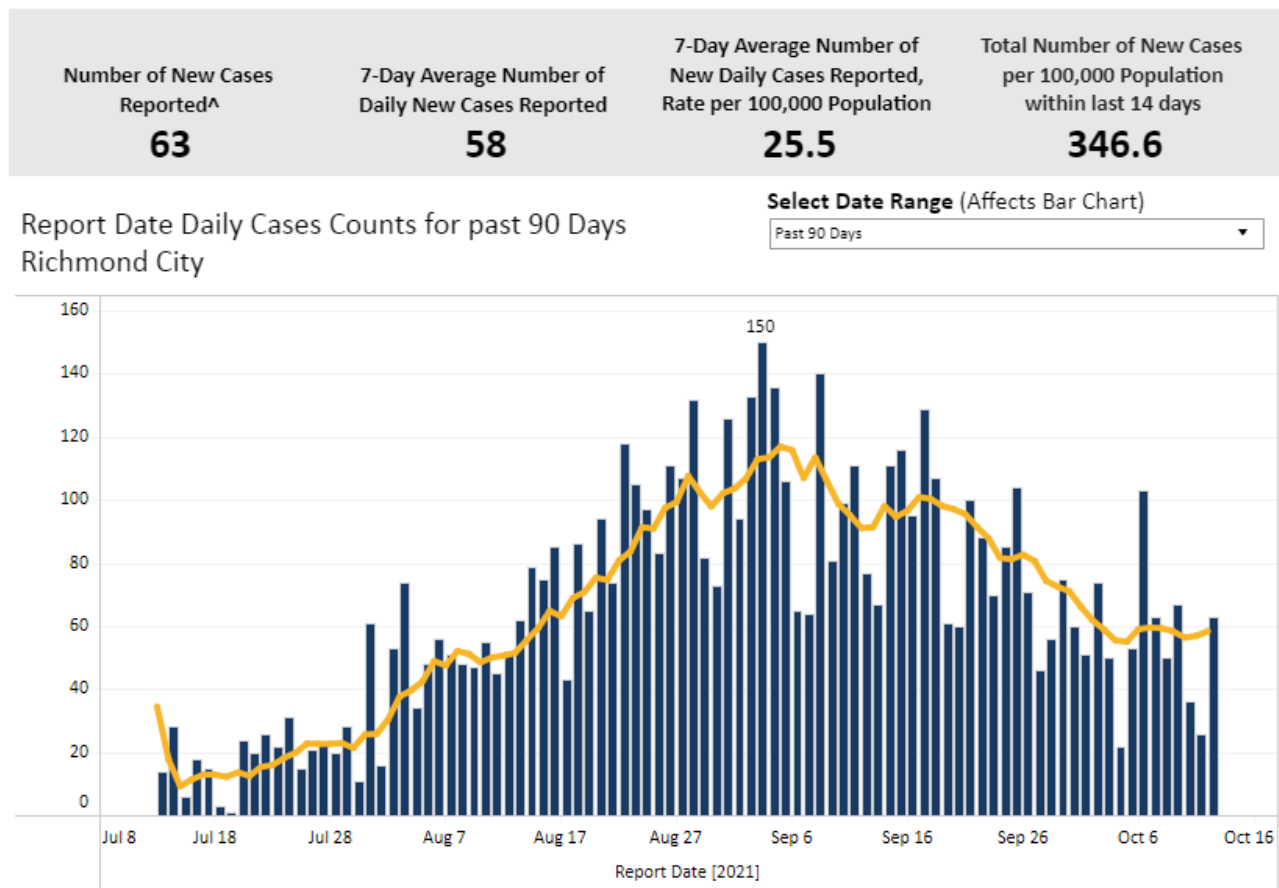
### 2.1 Summary of Cases

Cases in both districts have begun to **decrease** over the past month, with a **7-day total case rate** of 180.09 new cases per 100,000 population in Richmond and 172.60 new cases per 100,000 population in Henrico. Additionally, in both Richmond City and Henrico County, the level of community transmission is considered **High** according to the [CDC Covid Data Tracker](#).

In both districts, females comprise a higher proportion of cases. In Richmond, 20-29 year olds continue to lead case counts cumulatively, while 80+ lead cumulatively in Henrico. Regarding race and ethnicity, the highest incidence of cases in both districts is still among Black individuals. Additionally, in both districts, the percentage of cases among the Latino population is disproportionately high cumulatively as compared to their population percentage but closer to their population percentage more recently.

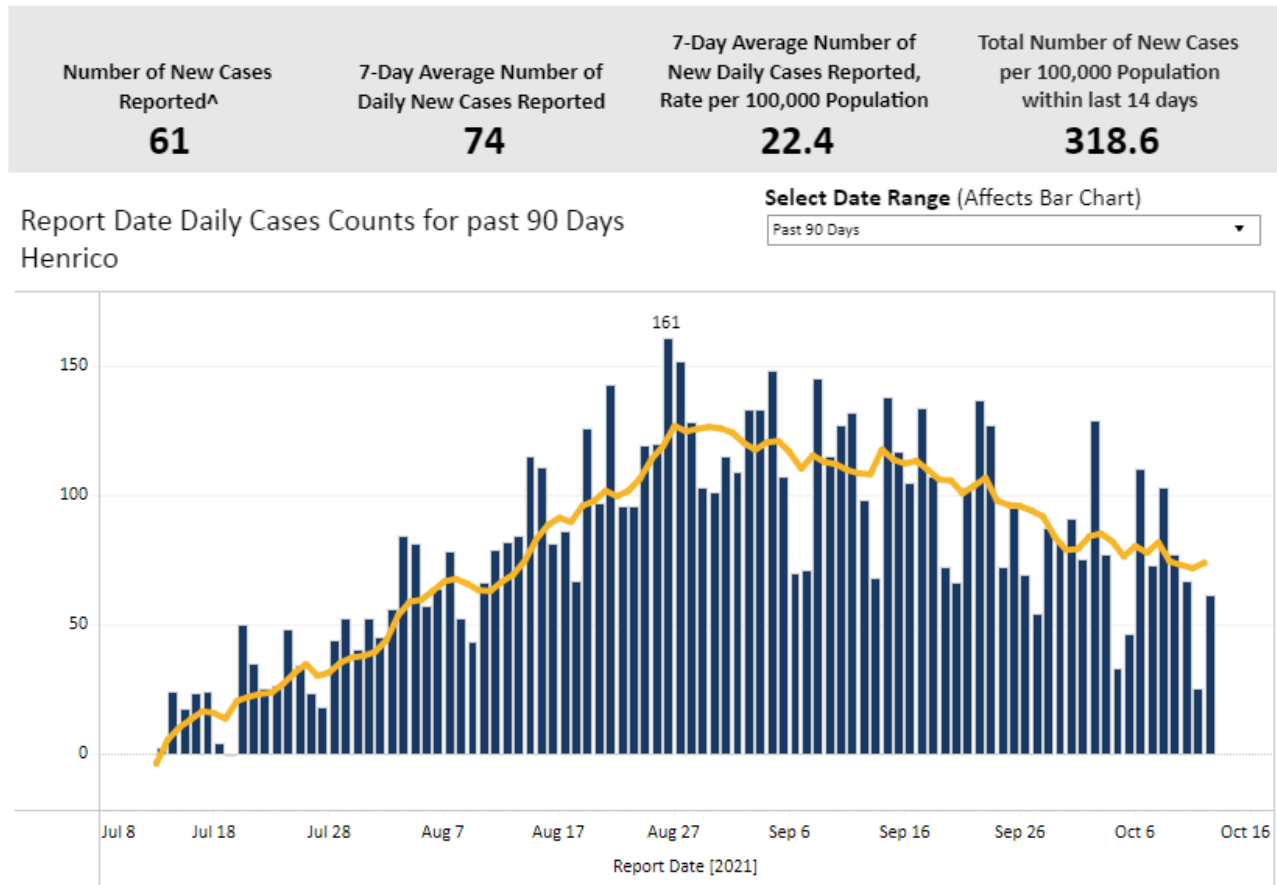
### 2.2 Case Reporting Trends by Date

Source: [VDH COVID-19 Cases & Testing Locality Dashboard](#)



- In Richmond, the number of daily new cases reported is influenced by cases being reallocated to different localities for data quality purposes. This explains some historic “negative” cases (cases reallocated away from Richmond outnumbering actual new cases) and unusual positive spikes in early July (cases reallocated to Richmond from elsewhere added on top of actual new cases).

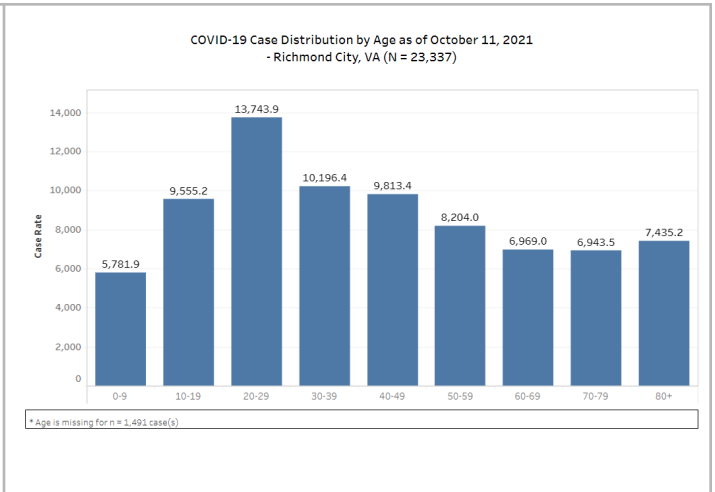
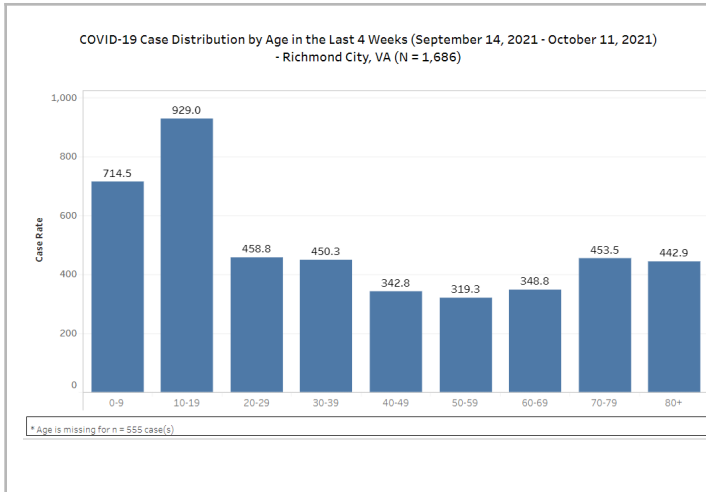
- From late July through late August, daily new cases generally increased, with some fluctuations.
- A slow decrease can be noted during the month of September. This decrease trails into October, plateauing during the second week. All data is subject to lags in reporting.



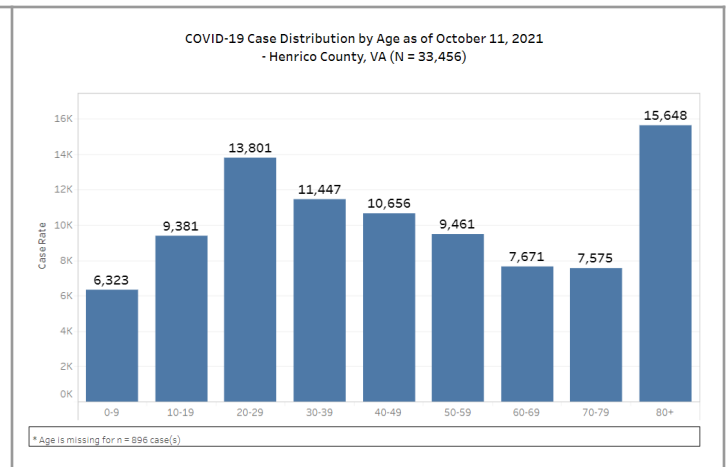
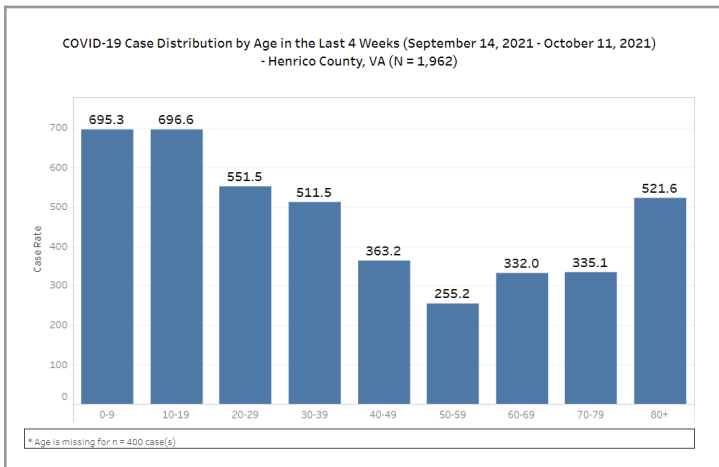
- In Henrico, the number of new cases reported per day has also been fluctuating due to recent efforts to reallocate older cases to appropriate localities.
- From the middle of July through late August, daily new cases generally increased. During the last week of August and throughout September, however, data indicated a plateau. Moving into October, the daily cases reported per day in Henrico County can be observed following a downward trend. A potential plateau can be noted during the second week of October.
- All data is subject to lags in reporting.

## 2.3 Cases by Age Group by County

Population totals are based on 2019 data from the National Center for Health Statistics (NCHS). Please note - this is a change from previous reports which used Census data to estimate population by age group.



- In Richmond City, individuals aged 10-19 have the highest case rates in the last four weeks, followed by individuals aged 0-9. Individuals aged 20-29 have the highest case rate cumulatively.
- Case burdens for individuals 50 and over are notably down in the last four weeks compared to cumulatively.



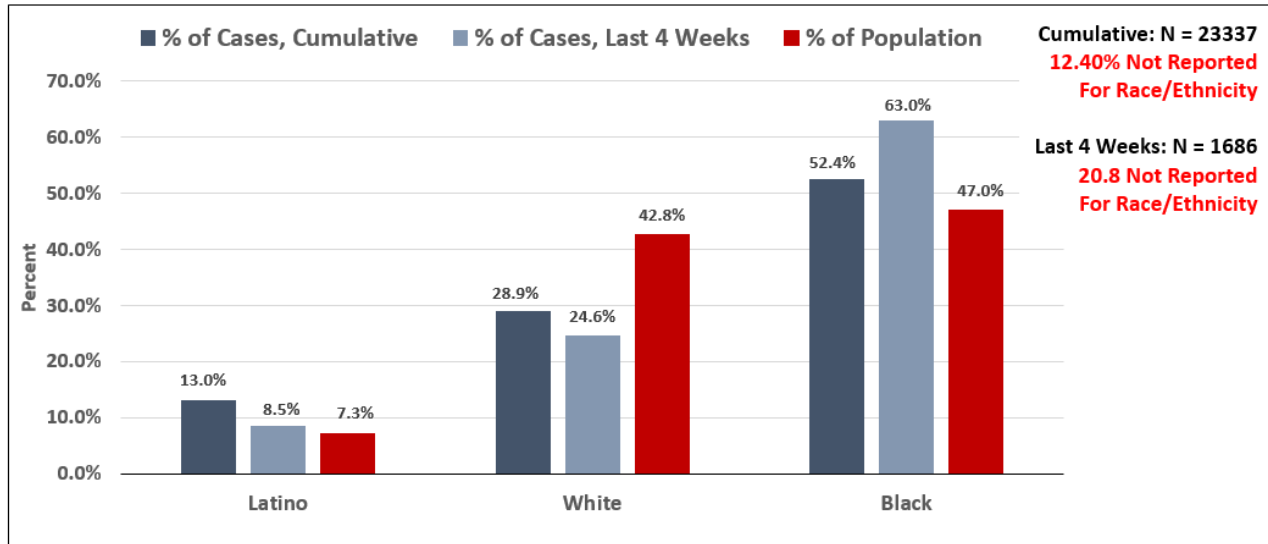
- In Henrico, case rates over the past four weeks show a high frequency of cases occurring in individuals aged 0-9, and 10-19, and 80 and over whereas cumulative case rates indicate a large burden being placed on individuals aged 80 and over and those aged 20-29.
- Case rates are down for some older age groups (60 and over), with a notable drop for individuals 50 to 59.



## 2.4 Cases & Population Proportions by Race & Ethnicity by County

Population totals are based on 2019 data from the National Center for Health Statistics (NCHS).

**COVID-19 Case Distribution by Race and Ethnicity in the Last 4 Weeks (September 14, 2021 - October 11, 2021)- and Cumulatively through October 11, 2021 Richmond City, VA**



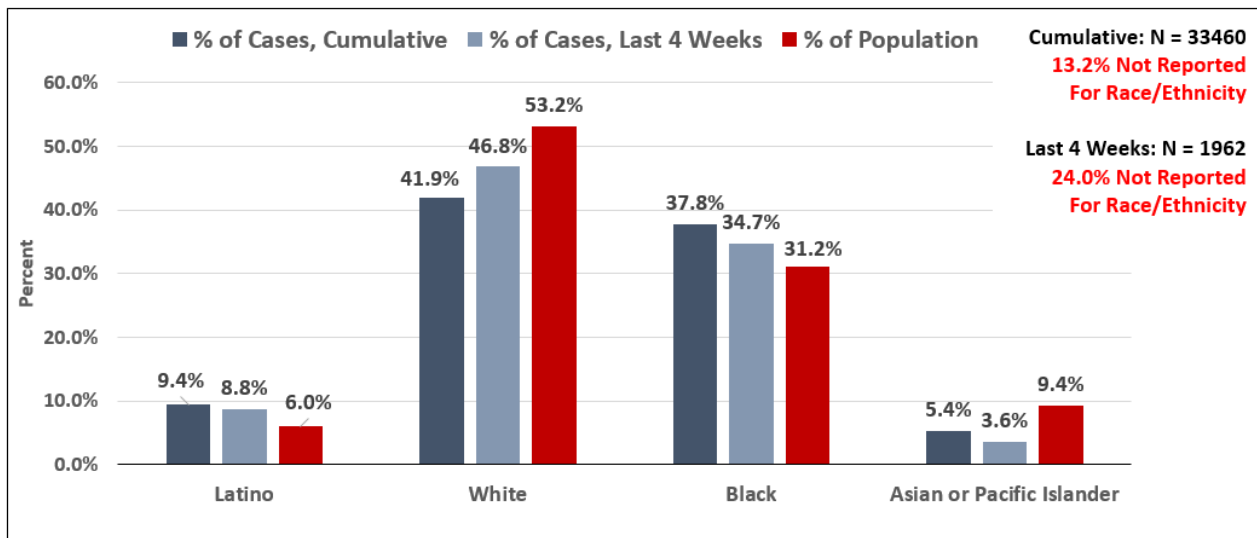
\* NCHS population estimates are not available for Two or More Races (235 total cases) or Other Race (394 total cases) and thus they are absent from the plots.

\* Missing and Unknown Ethnicities were assumed to be of Non-Hispanic ethnicity.

\* Cases among individuals identifying as Asian or Pacific Islander or Native American are suppressed (counts < 5)

- In Richmond, the case burden for Black individuals over the last 4 weeks (63.0%) is disproportionately high relative to their population percentage (47%), while the case burden for White individuals is disproportionately low (24.6%) relative to their population percentage (42.8%).

**COVID-19 Case Distribution by Race and Ethnicity in the Last 4 Weeks (September 14, 2021 - October 11, 2021)- and Cumulatively through October 11, 2021- Henrico County, VA**



\* NCHS population estimates are not available for Two or More Races (375 total cases) or Other Race (849 total cases) and thus they are absent from the plots.

\* Missing and Unknown Ethnicities were assumed to be of Non-Hispanic ethnicity.

\* Cases among individuals identifying as Native American are suppressed (counts < 5)

- In Henrico in the last four weeks, the case burden for Black individuals (34.7%) is higher than the proportion of the population (31.2%). Meanwhile, the case burdens for White

individuals (46.8%) and Asian or Pacific Islander individuals (3.6%) are relatively low compared to their proportions of the population (53.2% and 9.4%, respectively).

### 3.0 Hospitalizations & Fatalities

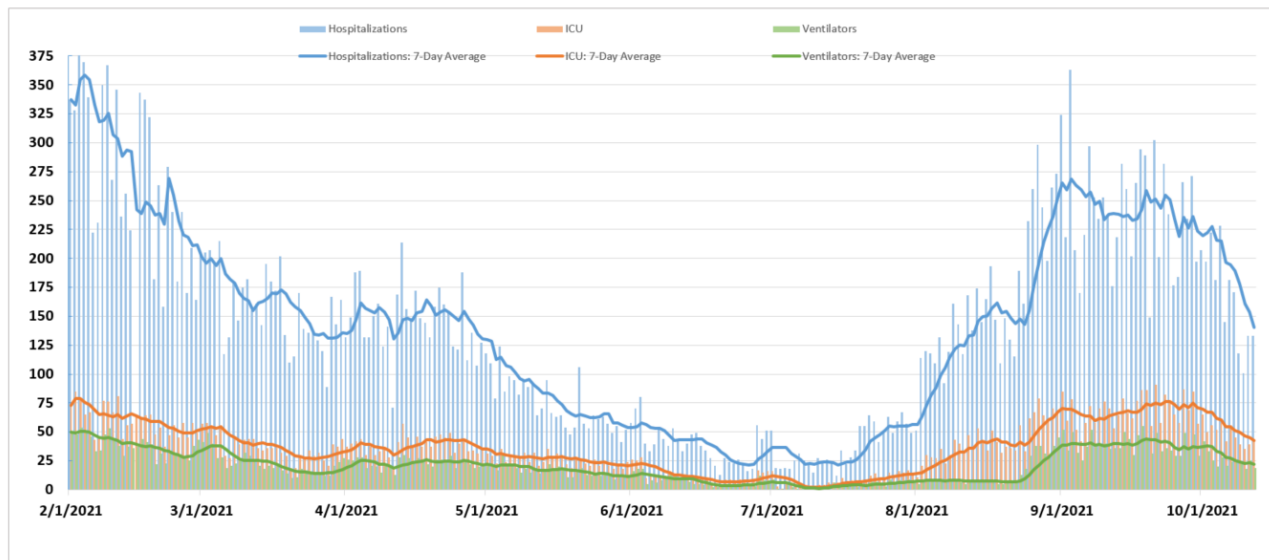
#### 3.1 Summary of Hospitalizations & Fatalities

**Hospitalizations** based on confirmed dates of admission among both Richmond City and Henrico County residents have begun to decrease following recent upticks. **Fatalities** among Richmond City residents and Henrico County are relatively low moving into the last week of September.

Looking more broadly at health systems within the Richmond catchment area, hospitalizations, ICU hospitalizations, and ventilator utilizations are increasing, but are generally at a lower level as compared to January of this year. *Hospitalizations by subgroup (sex, age, and race) are reported on a monthly basis.*

#### 3.2 COVID-19 Hospitalization, ICU, & Ventilator Utilization (VHASS)

Total Daily COVID-19 Hospitalizations, ICU Hospitalizations, and Ventilator Utilizations  
February 1, 2021 – October 12th, 2021  
Richmond Catchment Area



\*Sum Of Daily Counts Displayed in Above Metric - Hospitalizations: 35,597 of 91,390 ALL TIME, ICU Hospitalizations: 8,528 of 22,713 Ventilator Utilizations: 4,812 of 12,340

- Hospitalizations, ICU Hospitalizations, and Ventilator Utilizations in the Richmond Catchment area decreased over the later part of September moving into October. All data is subject to lags in reporting.

## 4.0 VACCINATION

### 4.1 Vaccine Summary

Richmond City and Henrico County Health Districts are in Phase 2 of vaccination. Anyone aged 12 or older is eligible to receive a vaccine. As of October 11, 61.7% of the region's population has received at least one dose of the vaccine and 56.2% of the region's population has been fully vaccinated. Approximately 60.8% of the combined Richmond City and Henrico County population has received at least one dose and 55.2% of the two districts' combined population has been fully vaccinated.

In both Richmond City and Henrico County, older age groups have consistently been vaccinated at a higher rate than younger age groups. In Richmond City, the 70% vaccination benchmark has been met by individuals aged 65 and over. In Henrico County that same benchmark was recently met by individuals aged 30 and over and all groups are now over 70% in the "at least one dose" category.

This section includes an estimated breakdown of vaccination uptake by race, sex, and age subgroups.

### 4.2 Percentage of Vaccination Goals Reached by Population

		POPULATION	POPULATION GOAL (70%)	PEOPLE WITH AT LEAST ONE DOSE	PEOPLE FULLY VACCINATED
Richmond	12-17	11,150	7,805	6,110 (54.8%)	5,184 (46.5%)
	<b>18+</b>	<b>190,750</b>	<b>133,525</b>	<b>118,313 (62%)</b>	<b>106,680 (55.9%)</b>
	65+	31,809	22,266	24,609 (77.4%)	22,678 (71.3%)
Henrico	12-17	25,954	18,168	18,292 (70.5%)	16,173 (62.3%)
	<b>18+</b>	<b>256,660</b>	<b>179,662</b>	<b>198,793 (77.5%)</b>	<b>181,808 (70.8%)</b>
	65+	52,720	36,904	47,142 (89.4%)	44,054 (83.6%)

Population totals are based on 2019 data from the National Center for Health Statistics (NCHS). Please note - this is a change from previous reports which used Census data to estimate population by age group.

Nationally, the Biden administration is using the **percentage of adults (individuals 18 and over)** to track progress in vaccination. Though the percentage of the population needed to reach herd immunity is still uncertain, in line with federal guidance, we have set an overall goal of vaccinating 70% of the population. First and second doses of the Pfizer vaccine must be administered at least 21 days apart. First and second doses of the Moderna vaccine must be administered at least 28 days apart. People who received the Johnson & Johnson vaccine, which is a single dose, are

included in the count of people with at least one dose *and* the count of people who are fully vaccinated.

### 4.3 Vaccinations by Locality as of October 11, 2021

Source: [vdh.virginia.gov](http://vdh.virginia.gov)

HEALTH DISTRICT	LOCALITY	TOTAL POPULATION	PEOPLE WITH AT LEAST ONE DOSE	PEOPLE FULLY VACCINATED
Chesterfield	Chesterfield	352,802	220,930	200,243
	Colonial Heights	17,370	9,697	8,490
	Powhatan	29,652	16,205	14,823
Chickahominy	Charles City	6,963	4,252	3,990
	Goochland	23,753	16,754	15,775
	Hanover	107,766	70,357	65,984
	New Kent	23,091	13,275	12,298
Henrico	Henrico	330,818	217,085	197,981
Richmond	Richmond City	230,436	124,423	111,864
Total		<b>1,122,651</b>	<b>692,978</b>	<b>631,448</b>

Population totals are based on 2019 data from the National Center for Health Statistics (NCHS). Please note - this is a change from previous reports which used Census data to estimate population by age group.

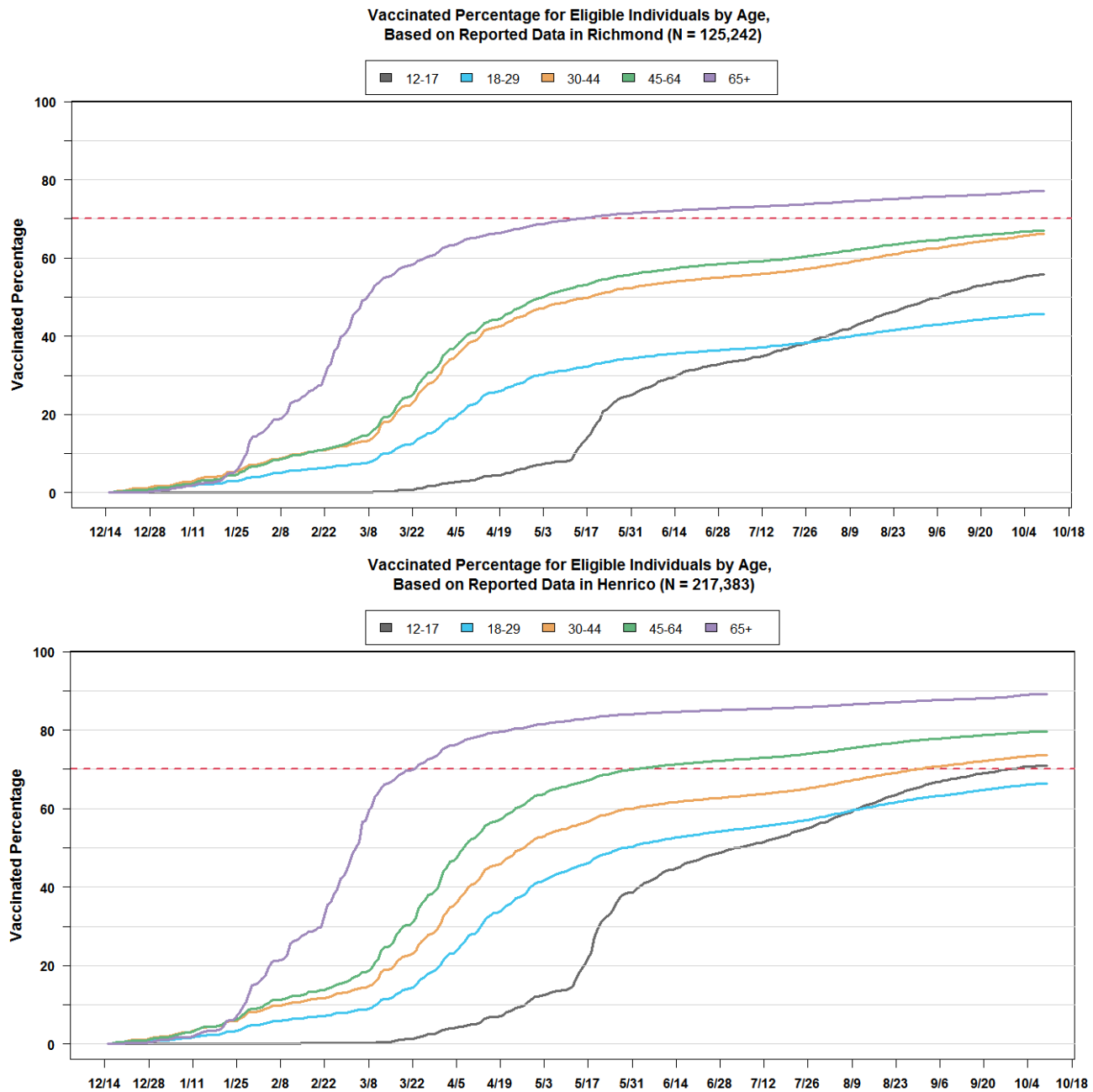
### 4.4 Vaccine Distribution by Age Group over Time

*Population estimates for age subgroups and for race and ethnicity subgroups have been changed for this report from the U.S. Census Bureau's American Community Survey (ACS) 2019 5-year estimates to the National Center for Health Statistics (NCHS) 2019 estimates to align with estimates used by other VDH metrics. This change also involves new race and ethnicity categories: Latino or Hispanic, Non-Hispanic White, Black or African-American, Asian or Pacific Islander, and Native American. Racial groups such as Two or more Races and Other Race have been excluded from the following metrics as they do not have corresponding NCHS estimates, but the counts for these groups can be seen in the footnotes for those plots.*

The following charts track vaccination rates by age group over time since vaccinations first began in mid-December.

- Individuals 65 and over in Richmond, and 30 and over in Henrico have all reached the 70% vaccinated threshold.
- Individuals 12 to 17 in Henrico recently met the 70% vaccination threshold.
- In most cases, older age groups within a locality have achieved higher vaccination rates than younger age groups in the same locality.

- Henrico age groups have achieved higher vaccination rates than their corresponding Richmond age groups and many younger age groups in Henrico have achieved higher rates than older age groups in Richmond.
- After later access to vaccination, individuals 12 to 17 have seen a notable increase in vaccination rates while individuals 18 to 29 have slowed in their rate of new vaccinations, leading to the younger age group surpassing the older one in both Richmond and in Henrico.
- All data is subject to lags in reporting, particularly in recent weeks.

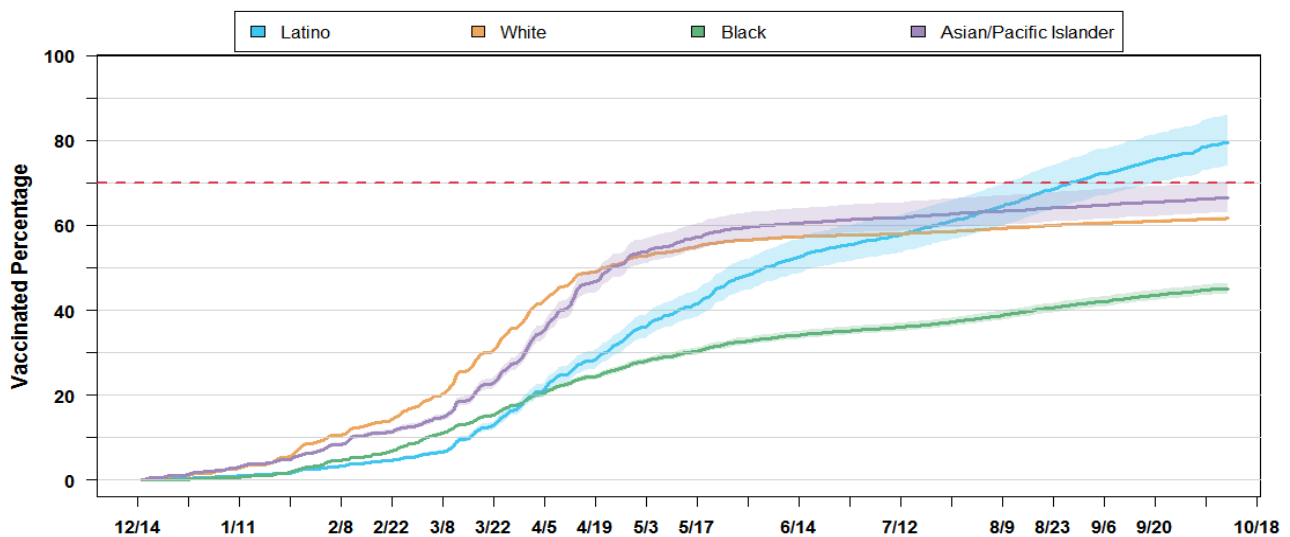


## 4.5 Vaccine Distribution by Race/Ethnicity over Time

The following charts track vaccination rates by race and ethnicity over time since vaccinations first began in mid-December.

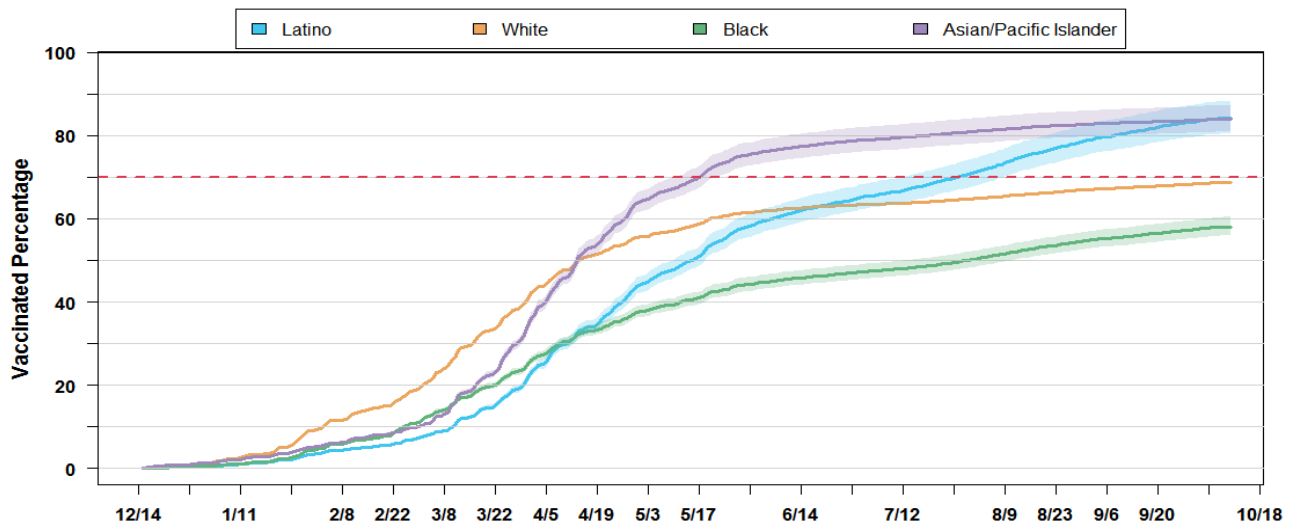
- Vaccination rates were the highest among White individuals through early April in Richmond and late April in Henrico. During the month of April in both districts, however, vaccination rates amongst Asian and Pacific Islander individuals increased above those of White Individuals.
- Latino individuals saw an acceleration in vaccination rates beginning in early March, and have since shown the highest vaccination rate in Richmond, and the second highest rate in Henrico.
- All data is subject to lags in reporting, particularly in recent weeks.

**Approximate Vaccinated Percentage for Eligible Individuals by Race/Ethnicity,  
Based on Reported Data in Richmond (N = 125,242)**



Vaccination rates by subgroup are underestimates due to individuals not disclosing race/ethnicity (7692 vaccinations).  
American Indian individuals (611 vaccinations) excluded due to unreliable vaccination rate calculations.

**Approximate Vaccinated Percentage for Individuals by Race/Ethnicity,  
Based on Reported Data in Henrico (N = 217,384)**

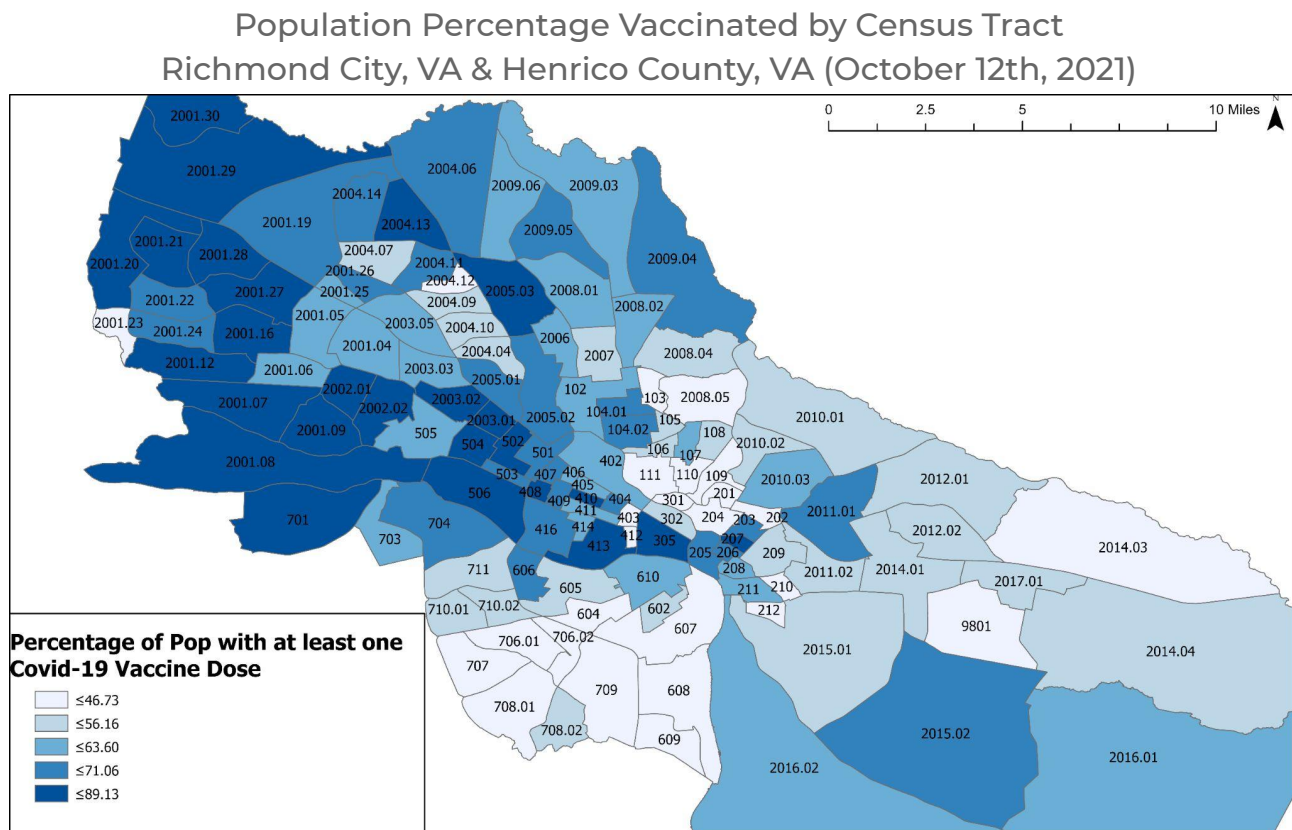


Vaccination rates are underestimates due to individuals not disclosing race/ethnicity or reporting 'Other Race' (16324 and 8947 vaccinations, respectively).  
American Indian individuals (1445 vaccinations) excluded due to unreliable vaccination rate calculations.

## 4.6 Vaccine Distribution Maps

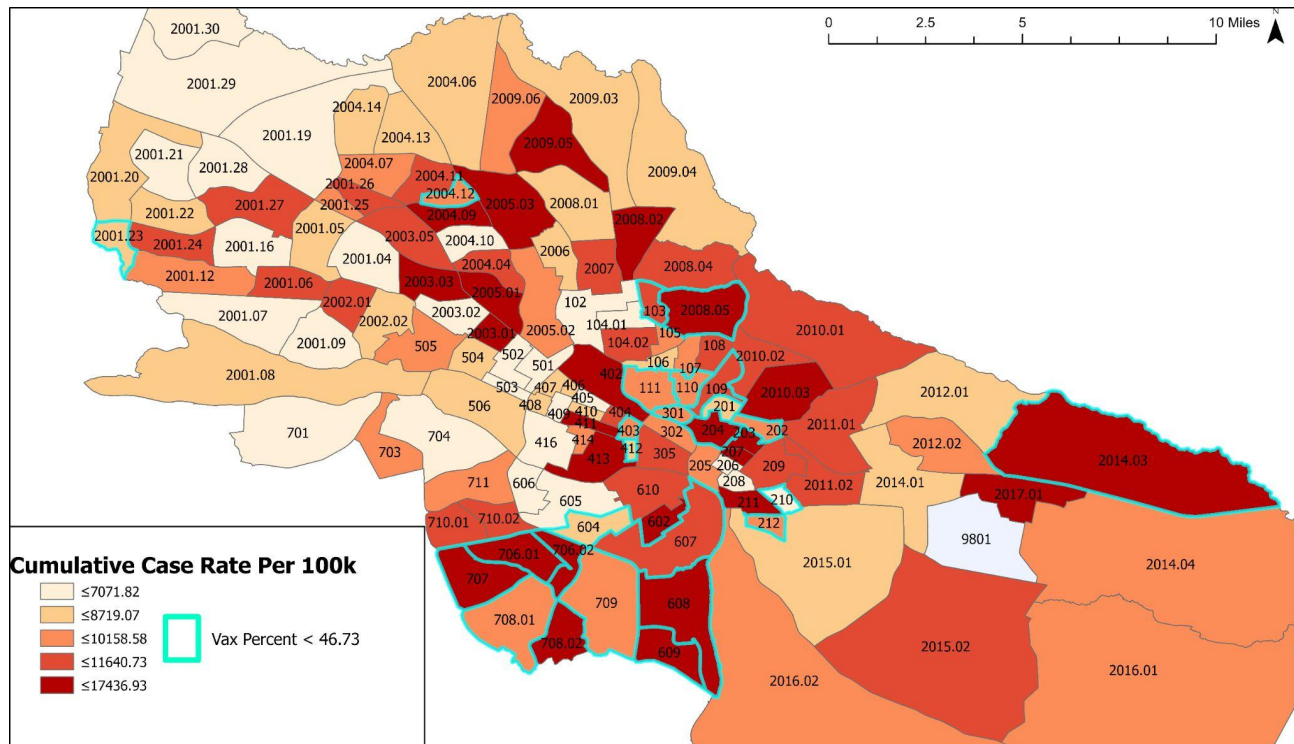
Below are maps that compare vaccination uptake percentage and COVID-19 burden by census tract. The data collected is consistent with statewide and national data trends; lower income communities of color tend to experience more severe outcomes of COVID-19, yet are disproportionately undervaccinated. RHHD monitors this data as part of its equity-driven approach; this data is used to assist program managers in strategically standing up vaccination opportunities, outreach, and education efforts in areas that are in highest need.

These percentages are estimations, and are solely intended for use in the planning and facilitation of outreach events.



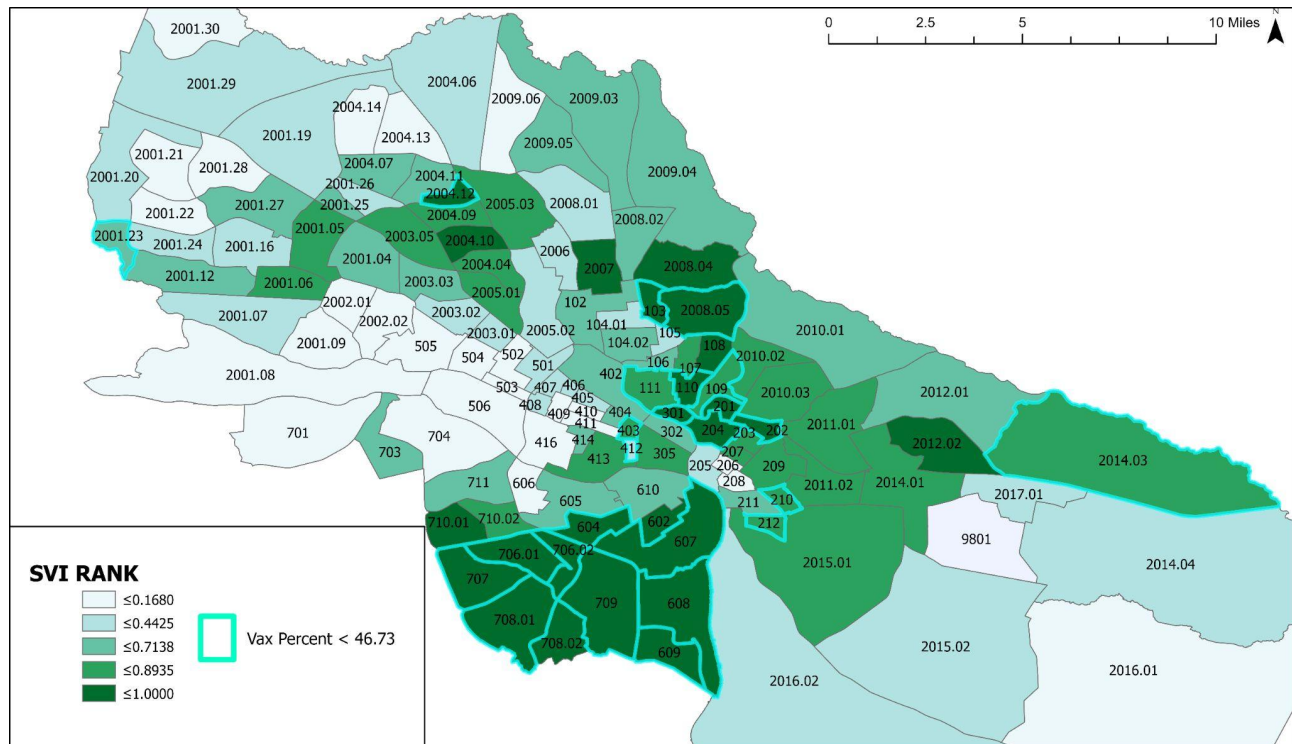


# COVID-19 Case Rate & Low Vaccination Uptake by Census Tract Richmond City, VA & Henrico County, VA (October 12th, 2021)





## Social Vulnerability & Low Vaccination Uptake by Census Tract Richmond City, VA & Henrico County, VA (October 12th, 2021)



- **Social vulnerability** is based on the CDC's [Social Vulnerability Index](#), last updated in 2018.
- **COVID-19 vaccination percentages** reflect the percentage of the **Total Population** within each tract that has been vaccinated. Data are sourced from the Virginia Immunization Information System (VIIS).
- **COVID-19 case rates** reflect **Cumulative** cases per 100,000 census tract population and are sourced from the Virginia Electronic Disease Surveillance System (VEDSS).
- **Population estimates** are from the US Census 2019 ACS Community Survey 5-year estimates.
- SVI, vaccination percentage, and case rates are visualized on these maps using the [quantiles classification](#) method, dividing the range into 5 groups, each containing the same number of observations (census tracts).