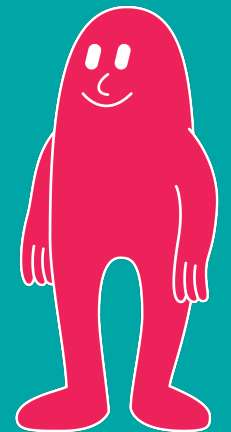


COVID-19

Last Updated 4/28/2023

RICHMOND CITY
HEALTH DISTRICT

HENRICO COUNTY
HEALTH DISTRICT



Data Sources

- **COVID-19 Case Data**
 - Accessed through DataViz server
- **COVID-19 Vaccine Administration Data**
 - Accessed through DataViz server
- **VHASS Hospital Status Board**
 - Accessed through VHASS portal

COVID-19 Table of Contents

Key Takeaways

- Cases
- Hospitalizations and Fatalities
- Vaccination

Summary Tables

- PCR Tests & PCR Percent Positivity by Health District
- Confirmed Cases, Hospitalizations, Fatalities, & Probable Cases by County
- Current VHASS COVID-19 Richmond Catchment Area Hospitalizations
- Clinical Status of Richmond Catchment Area Hospitals

Cases

- Case Reporting Trends by Event Date Richmond City & Henrico County
- Case Rates by Age Group by County
- Cases by Race/Ethnicity by County

Hospitalizations & Fatalities

- COVID-19 Hospitalization, ICU, & Ventilator Utilization (VHASS)
- Fatalities by Date by County

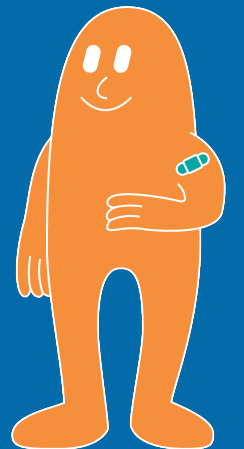
Vaccinations

- Percentage of Population Vaccinated by Age
- Vaccine Distribution by Race & Age Group by County
- Vaccination Status by subgroup & county
- Vaccine Administration by Category of Provider
- Cumulative Doses By All Recipients In Richmond City & Henrico County

Vaccine Distribution Maps

- Vaccination Percentage Change by Census Tract
- Vaccination Percentage by Census Tract
- COVID-19 Case Rate per 100k & Low Vaccination Percentage Tracts
- Social Vulnerability & Low Vaccination by Census Tract

Key Takeaways



Key Takeaways: COVID-19 Cases

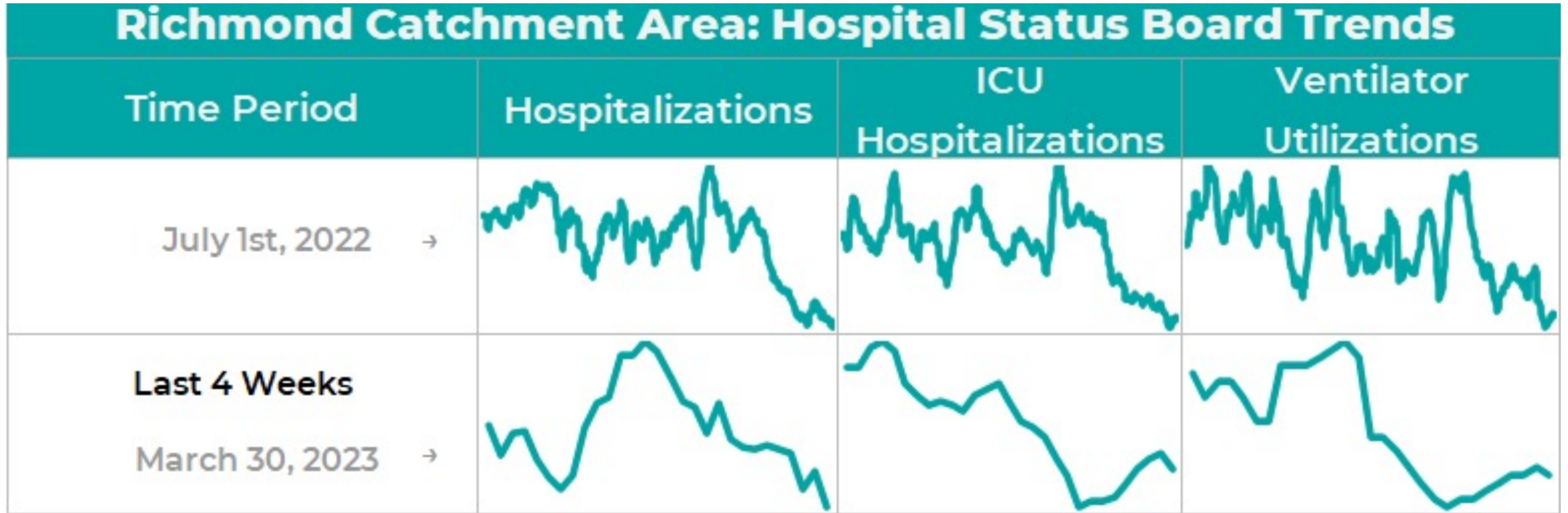
7-Day Total Case Rate per 100,000

District	This Week	Last Week
Henrico	52.3	51.7
Richmond	0	0

Richmond & Henrico

Demographic	Cumulative Highest	Last 4 Weeks
Age	20-29	60+
Sex	Female	
Race	Black	

Key Takeaways: COVID-19 Hospitalizations & Fatalities

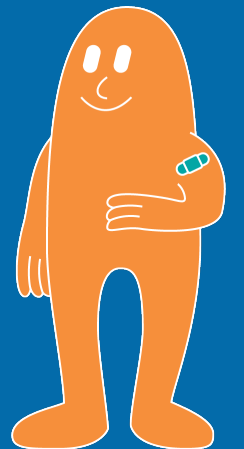


Key Takeaways: COVID-19 Vaccinations

Vaccination Demographic Trends		
Demographic	Richmond City	Henrico County
Age Groups ≥ 70% Vaccinated	30+	12+
Sex	Female	
Race	Asian/Pacific Islander & Latino	

Local Vaccination Stats & Regional Comparison			
Location	≥ 1 Dose	Complete	Booster
Richmond City & Henrico County	71.2%	67.5%	35.5%
Region	71.9%	68.4%	35.6%

Summary Tables



Confirmed Cases, Hospitalizations, Fatalities, & Probable Cases by County

CASE STATUS	RICHMOND CITY	HENRICO COUNTY	VIRGINIA
New cases this week (April 21 - April 28)	-148	232	1,706
All cases (April 28)	60,977	93,037	2,308,477
Confirmed cases	43,373	57,141	1,543,442
Hospitalizations	1,270	1,691	47,144
Deaths	467	931	9,027
Probable cases	17,604	35,896	691,184
Hospitalizations	50	98	2,969
Deaths	82	157	3,354
Case rate per 100,000	26,462	28,123	27,046

Current VHASS COVID-19 Richmond Catchment Area Hospitalizations

	TOTAL IN USE FOR COVID-19	CURRENTLY AVAILABLE
Confirmed Hospitalizations	40	123
Pending Hospitalizations	11	
Confirmed - ICU	3	28
Pending - ICU	0	
Confirmed - Ventilators	1	348
Pending - Ventilators	-	

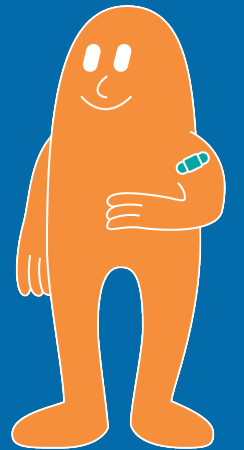
Clinical Status of Richmond Catchment Area Hospitals



Cases

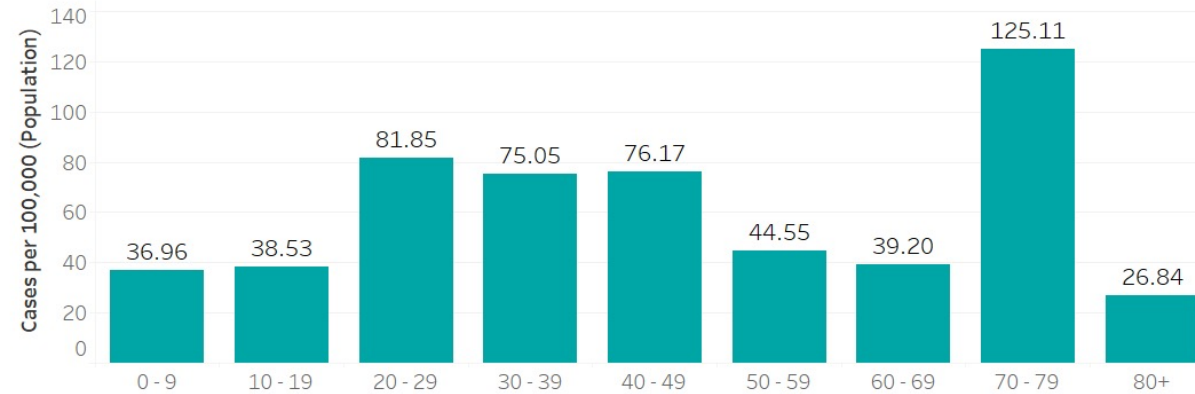
RICHMOND CITY
HEALTH DISTRICT

HENRICO COUNTY
HEALTH DISTRICT



COVID-19 Case Distribution by Age in the Last 4 Weeks

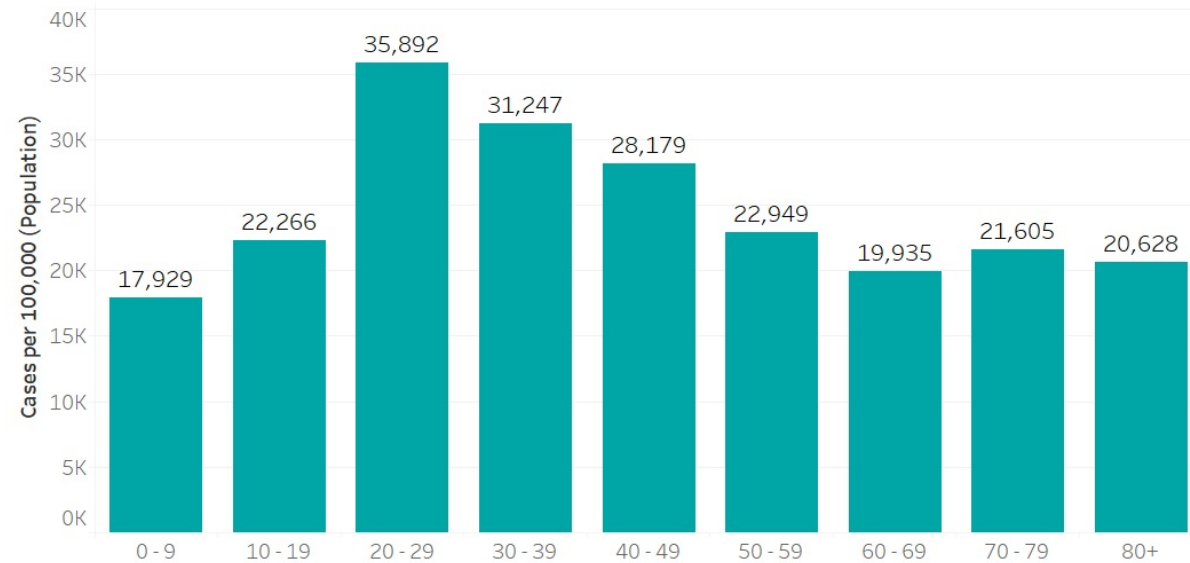
Richmond City, VA (n = 144); March 30, 2023 - April 25, 2023



* Age is missing for n = 0 case(s)

Cumulative COVID-19 Case Distribution by Age

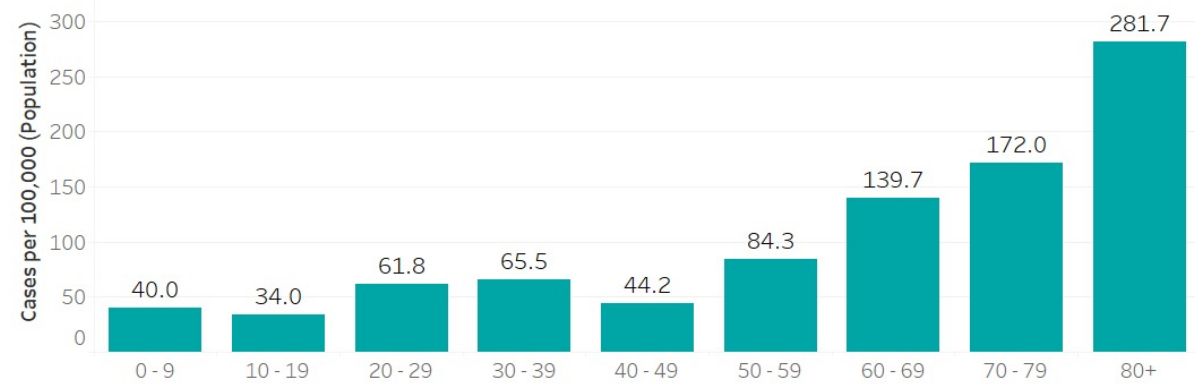
Richmond City, VA (N = 60,977); February 18, 2020 - April 25, 2023



* Age is missing for n = 28 case(s)

COVID-19 Case Distribution by Age in the Last 4 Weeks

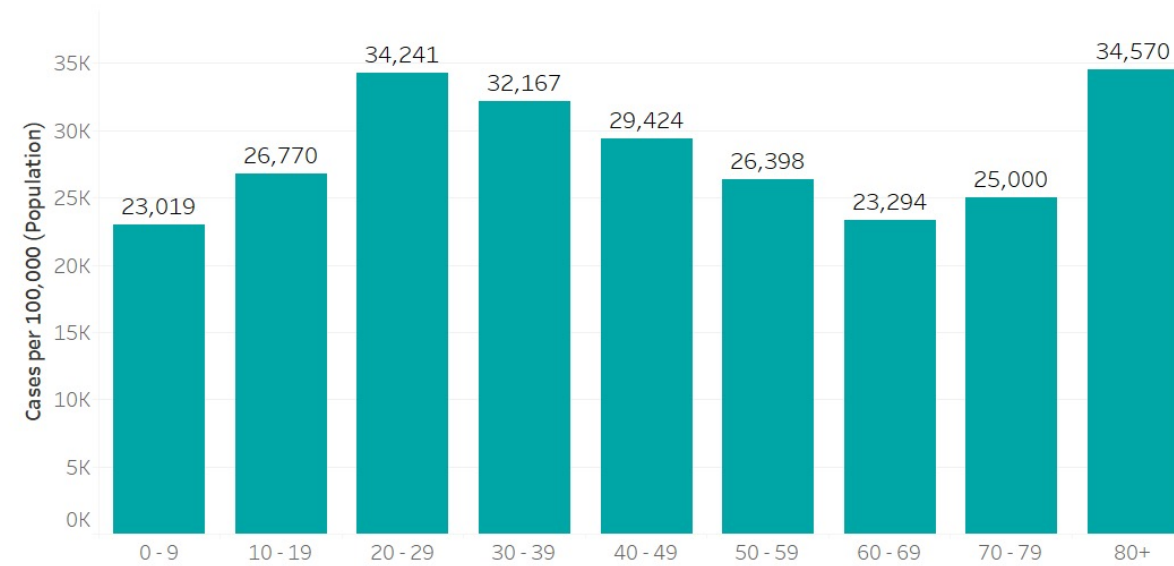
Henrico County, VA (n = 271); March 30, 2023 - April 25, 2023



* Age is missing for n = 0 case(s)

Cumulative COVID-19 Case Distribution by Age

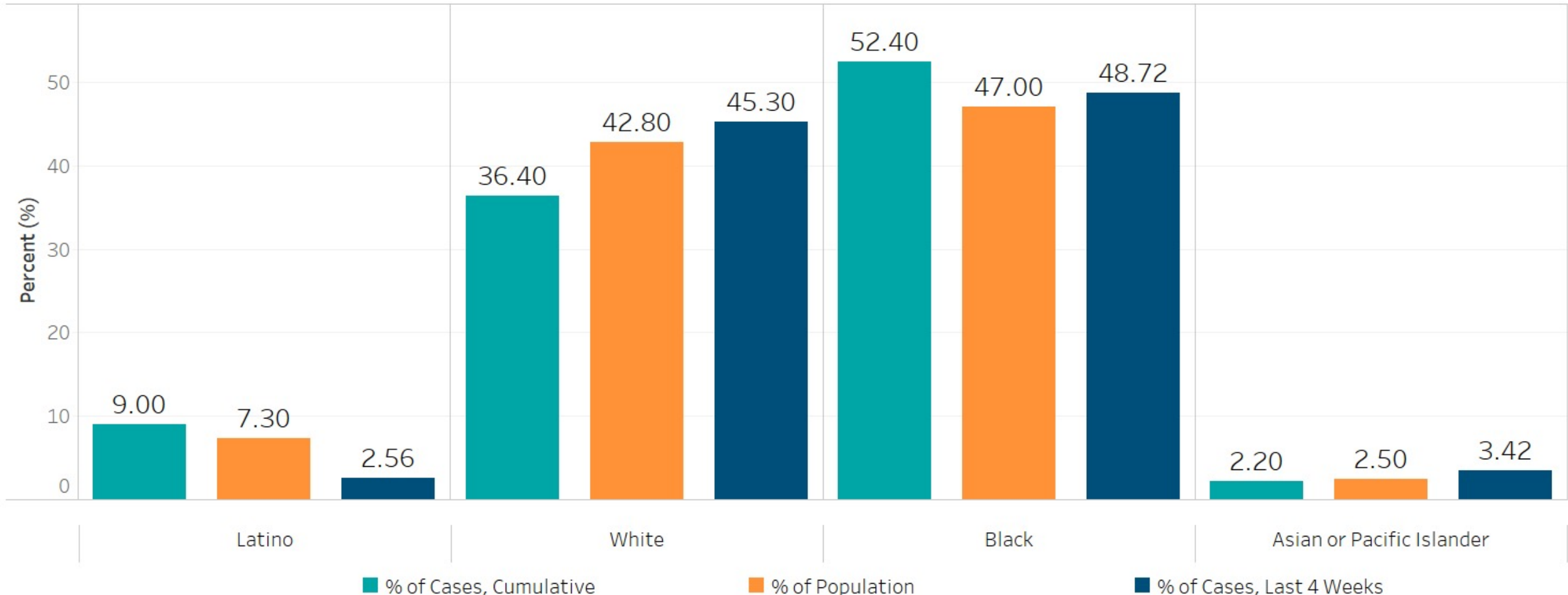
Henrico County, VA (N = 93,036); January 4, 2020 - April 25, 2023



* Age is missing for n = 26 case(s)

COVID-19 Case Distribution by Race/Ethnicity

Richmond City, VA; Cumulatively as of April 25, 2023 and in the Last 4 weeks (March 30, 2023 - April 25, 2023)

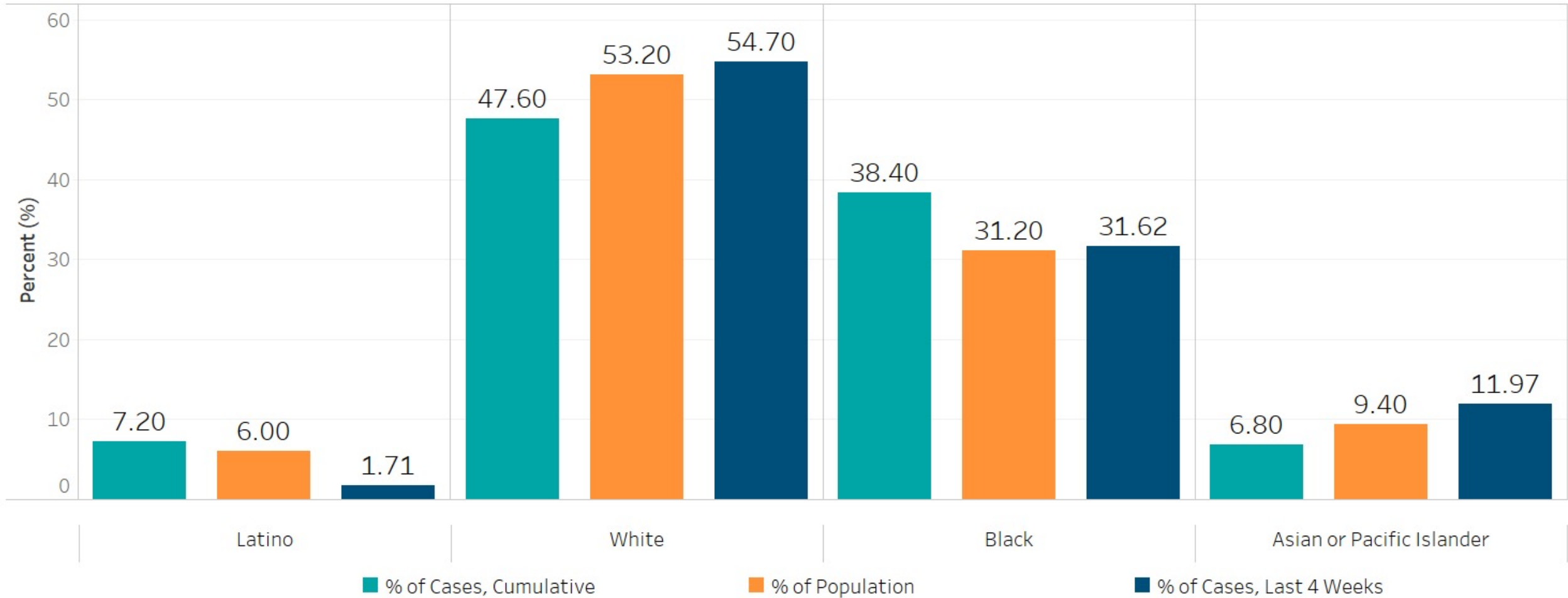


* NCHS population estimates are not available for Two or More Races or for Other Race (2,368 total cases)

* Missing or unknown ethnicities were assumed to be non-Hispanic.

COVID-19 Case Distribution by Race/Ethnicity

Henrico County, VA; Cumulatively as of April 25, 2023 and in the Last 4 weeks (March 30, 2023 - April 25, 2023)



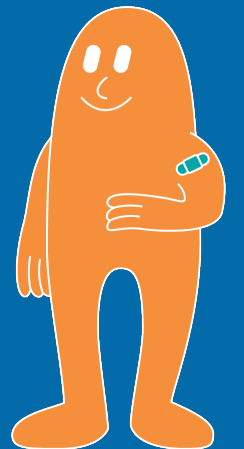
* NCHS population estimates are not available for Two or More Races or for Other Race (5,434 total cases)

* Missing or unknown ethnicities were assumed to be non-Hispanic.

Hospitalizations & Fatalities

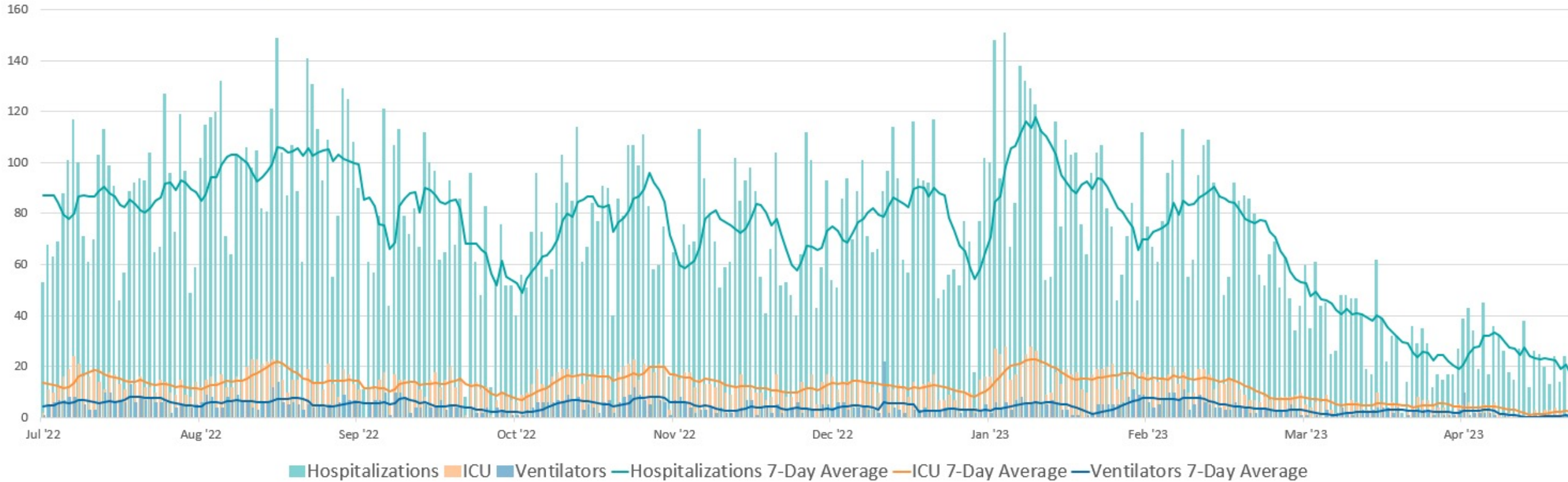
RICHMOND CITY
HEALTH DISTRICT

HENRICO COUNTY
HEALTH DISTRICT



Total Daily COVID-19 Hospitalizations, ICU Hospitalizations, and Ventilator Utilizations

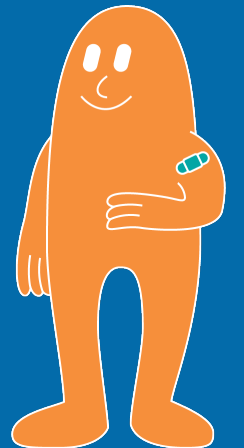
Richmond Catchment Area, July 1, 2022 - April 27, 2023



Vaccinations

RICHMOND CITY
HEALTH DISTRICT

HENRICO COUNTY
HEALTH DISTRICT

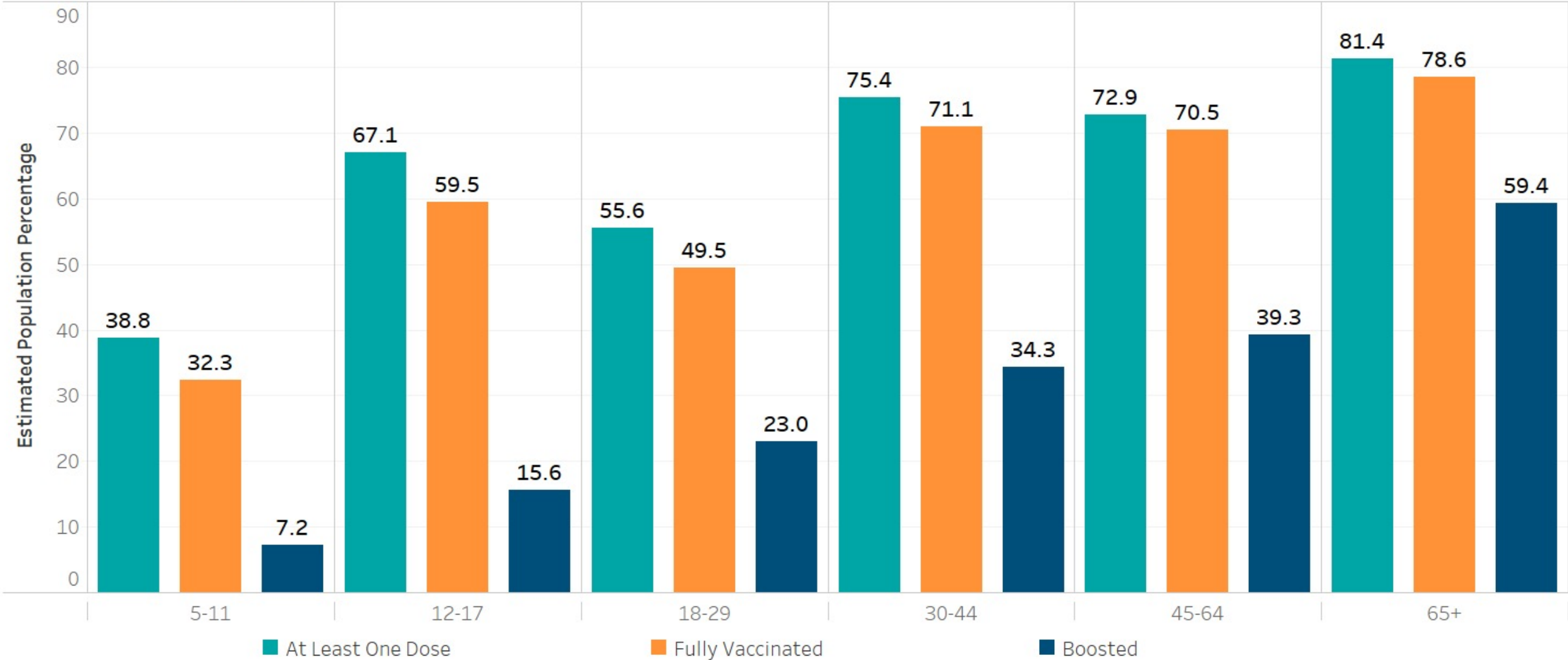


Percentage of Population Vaccinated by Age

County	Age Group	POPULATION	PEOPLE WITH AT LEAST ONE DOSE	PEOPLE FULLY VACCINATED	PEOPLE WITH BOOSTER
Richmond	0 to 4	13,338	2,215 (16.6%)	1,801 (13.5%)	748 (5.6%)
	5 to 11	15,198	5,856 (38.5%)	4,882 (32.1%)	1,097 (7.2%)
	12 to 17	11,150	7,471 (67%)	6,628 (59.4%)	1,734 (15.6%)
	18+	190,750	133,485 (70%)	125,803 (66%)	70,643 (37%)
	65+	31,809	25,894 (81.4%)	25,005 (78.6%)	19,067 (59.9%)
Henrico	0 to 4	19,798	2,986 (15.1%)	2,418 (12.2%)	1,080 (5.5%)
	5 to 11	28,406	14,931 (52.6%)	13,197 (46.5%)	2,587 (9.1%)
	12 to 17	25,954	20,748 (79.9%)	19,264 (74.2%)	5,908 (22.8%)
	18+	256,660	216,816 (84.5%)	208,688 (81.3%)	119,419 (46.5%)
	65+	52,720	49,699 (94.3%)	48,674 (92.3%)	37,640 (71.4%)

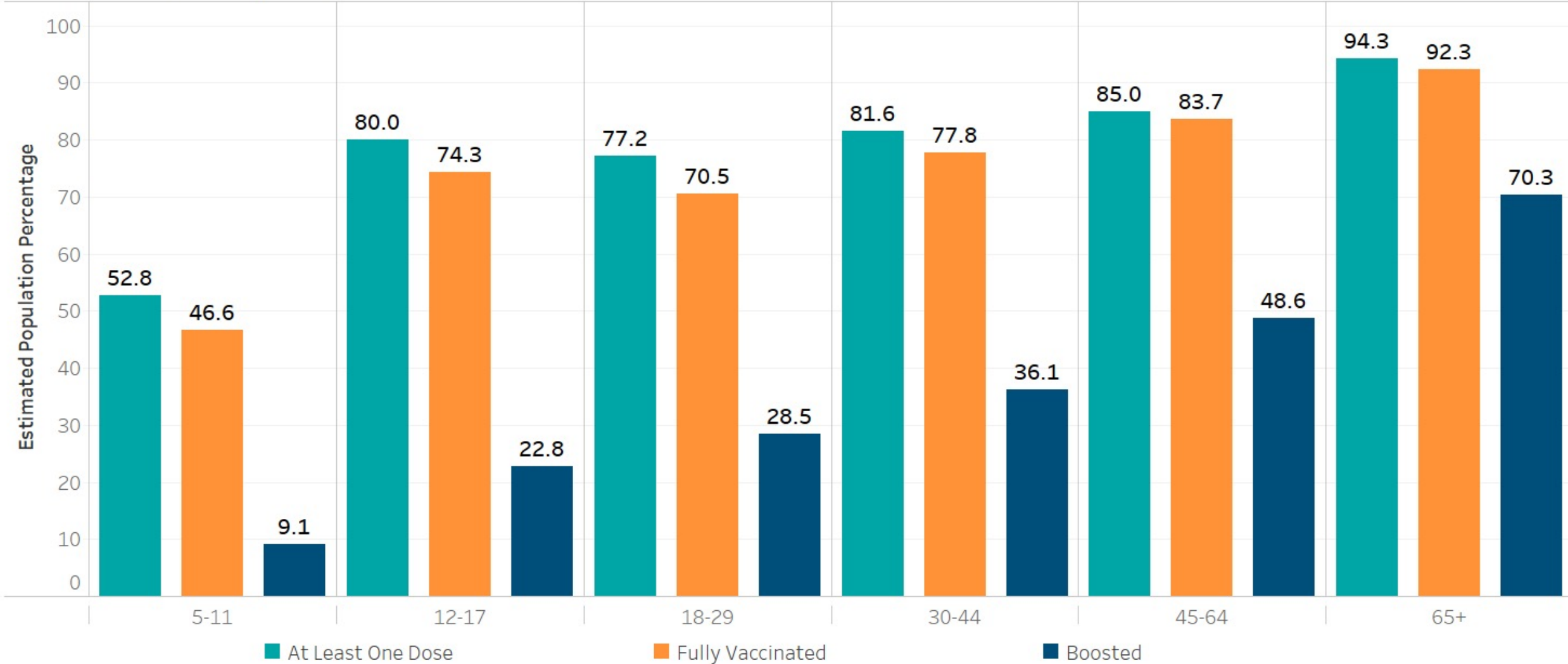
Vaccination Uptake Estimations by Vaccination Status & Age Group

Richmond City, VA; April 24, 2023



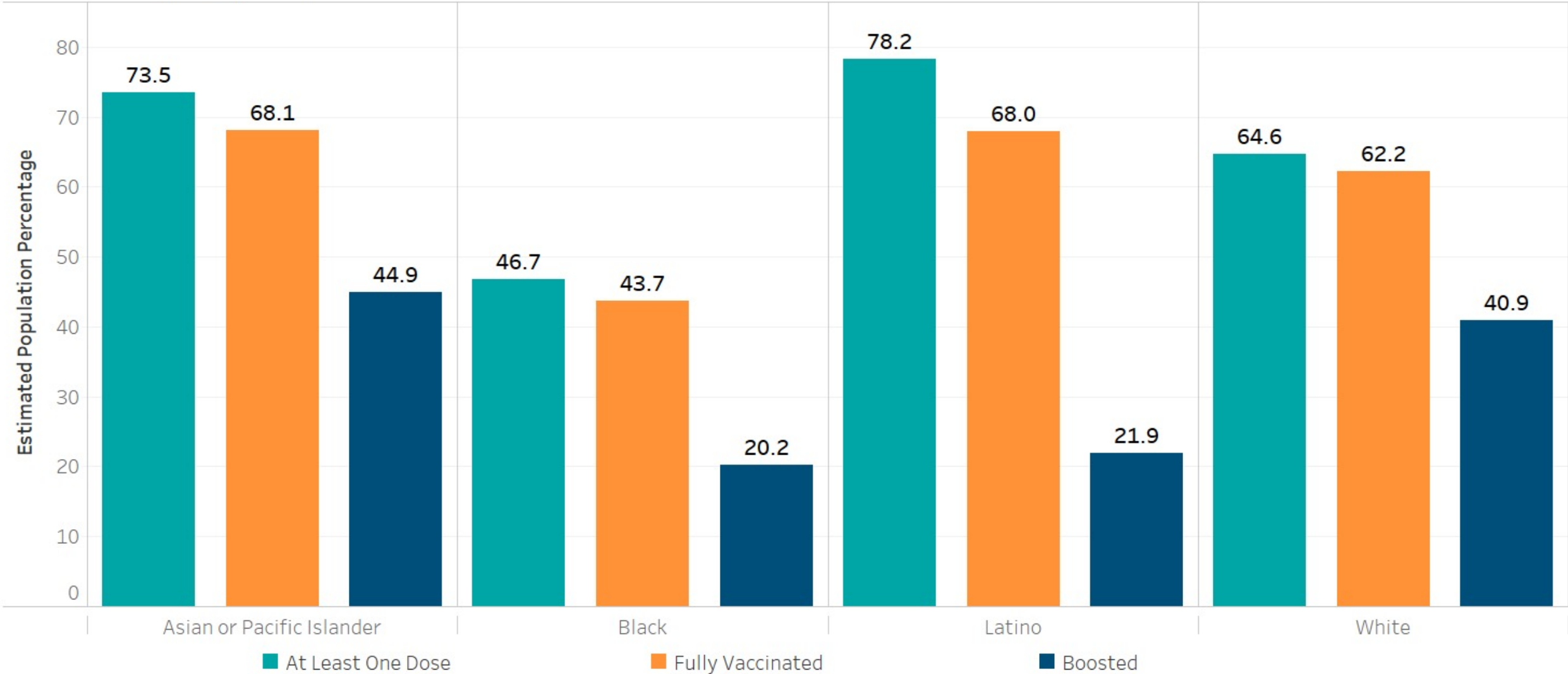
Vaccination Uptake Estimations by Vaccination Status & Age Group

Henrico County, VA; April 24, 2023



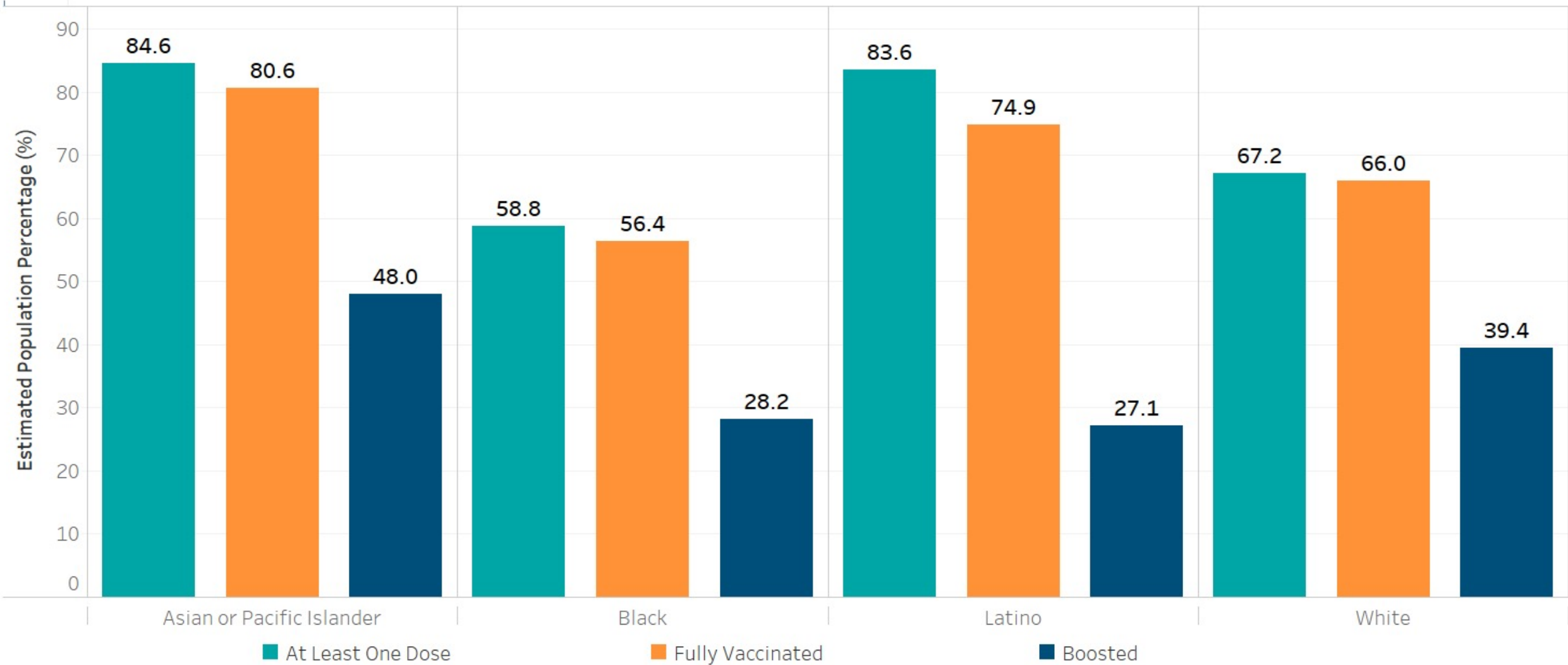
Vaccination Uptake Estimations by Vaccination Status & Racial/Ethnic Group

Richmond City, VA; April 24, 2023



Vaccination Uptake Estimations by Vaccination Status & Racial/Ethnic Group

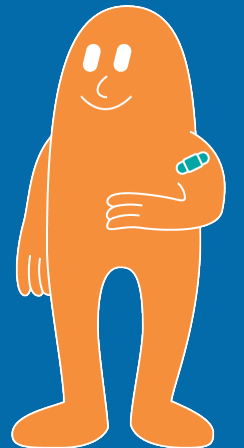
Henrico County, VA; April 24, 2023



Vaccine Uptake Maps

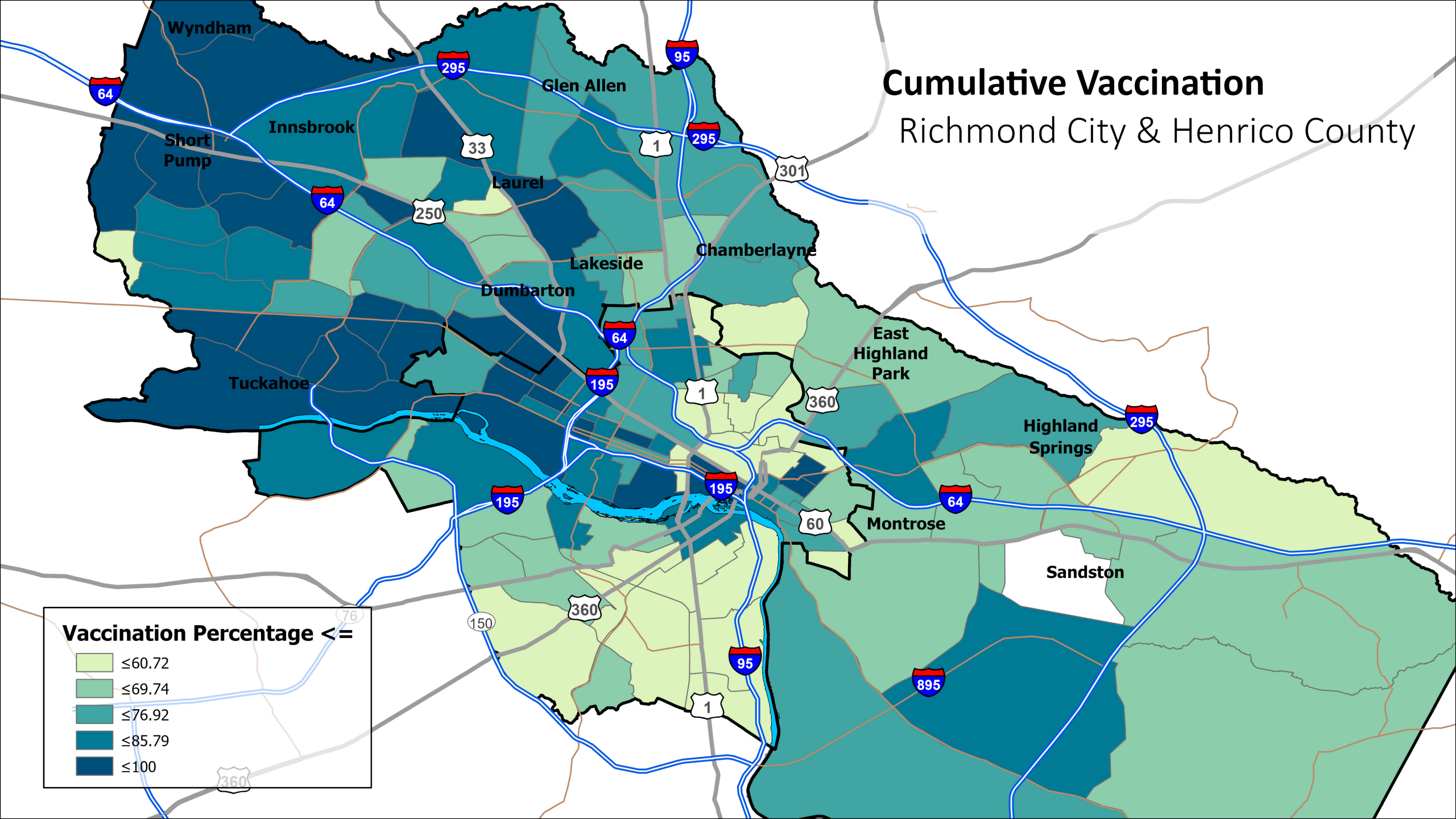
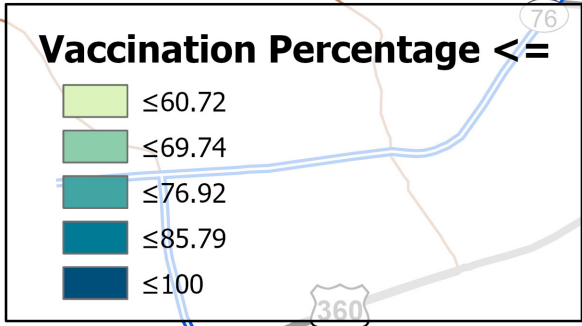
RICHMOND CITY
HEALTH DISTRICT

HENRICO COUNTY
HEALTH DISTRICT



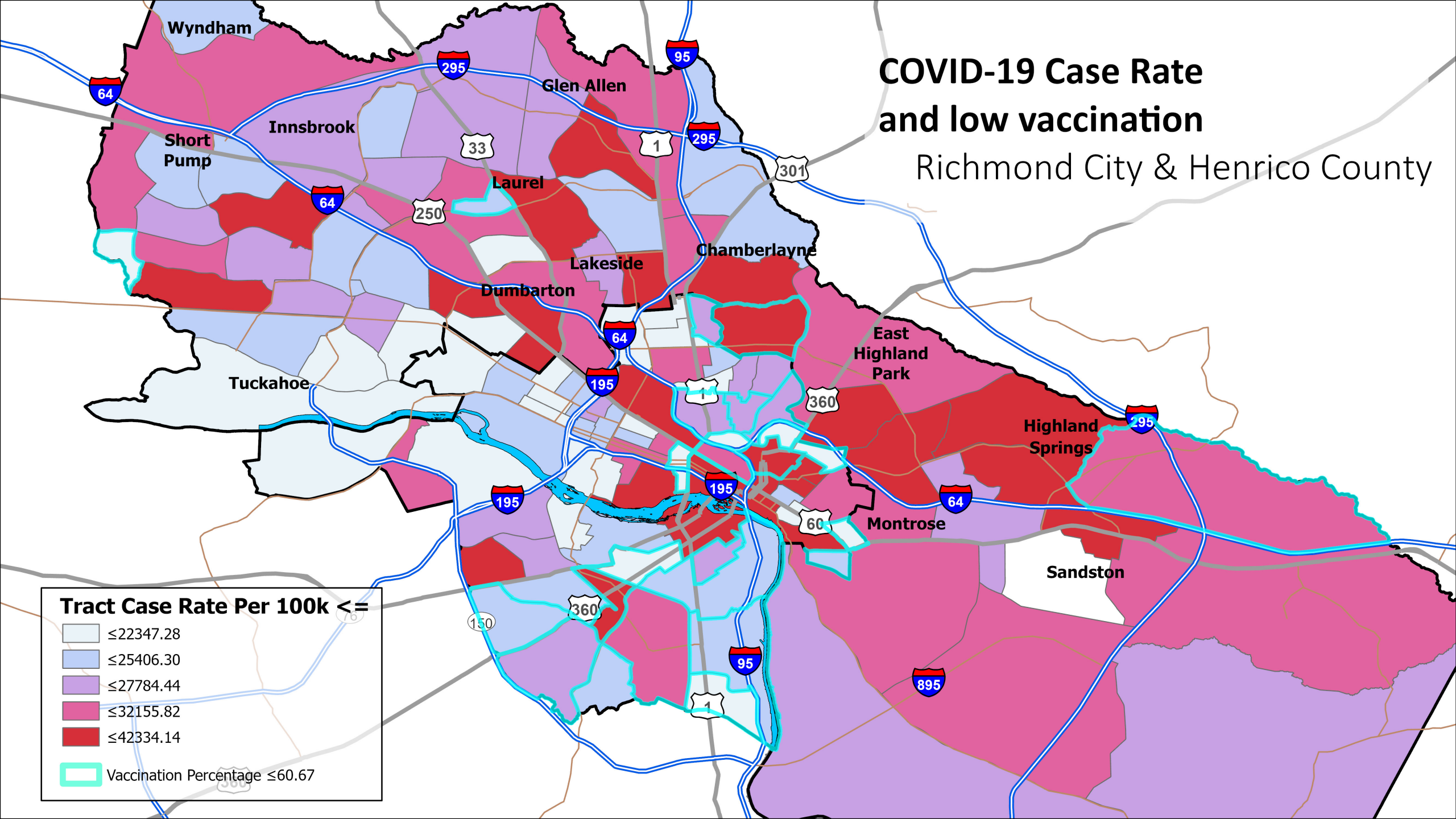
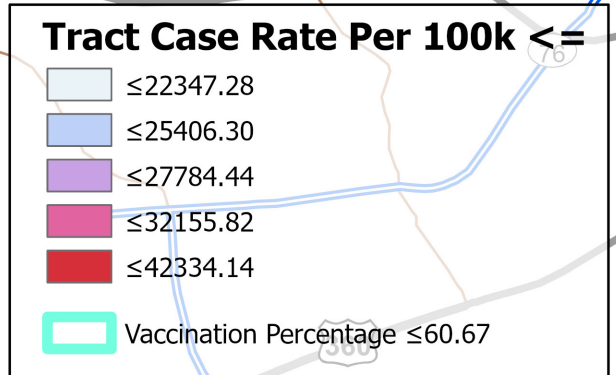
Cumulative Vaccination

Richmond City & Henrico County

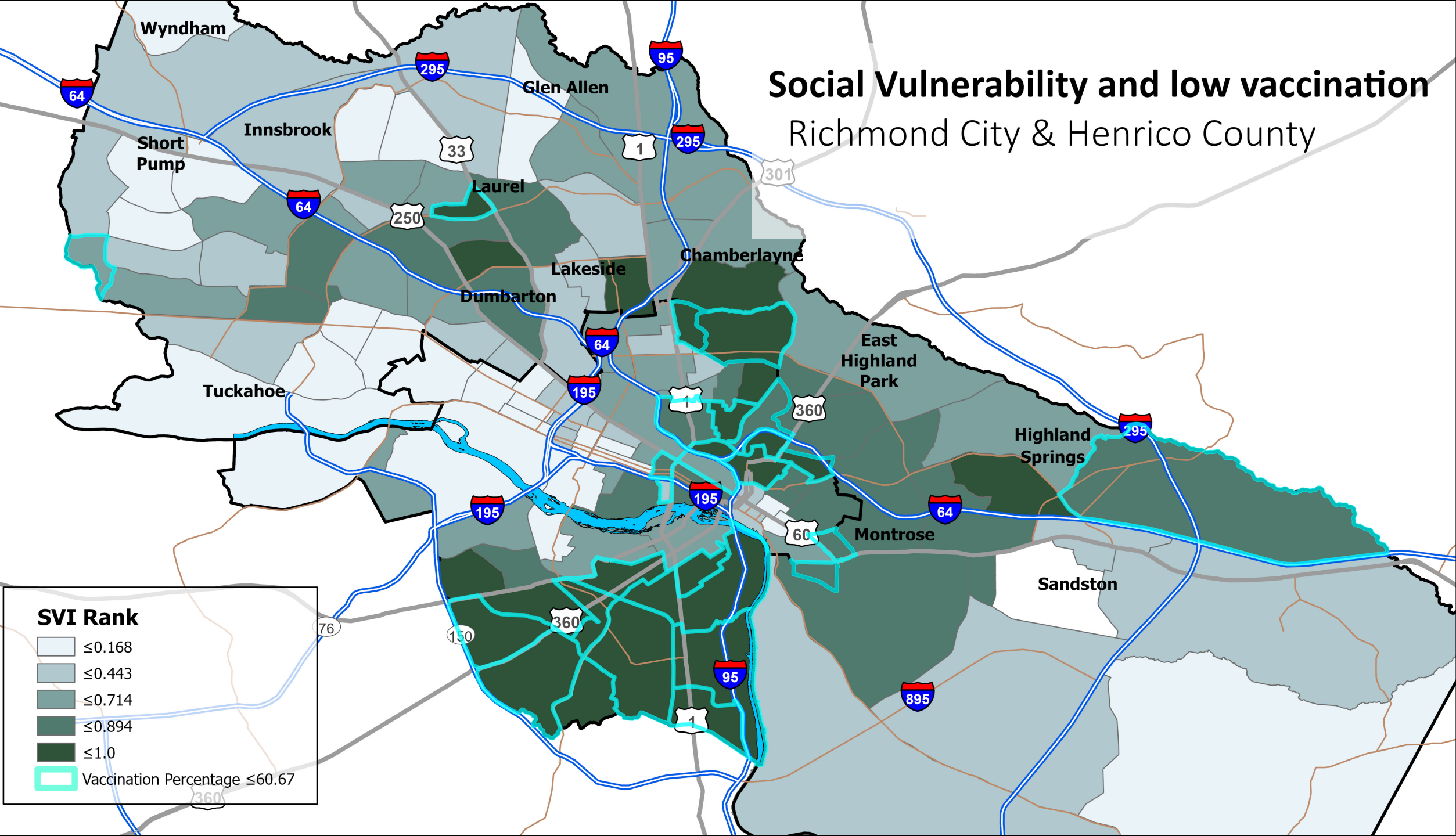


COVID-19 Case Rate and low vaccination

Richmond City & Henrico County



Social Vulnerability and low vaccination Richmond City & Henrico County



SVI Rank

- ≤0.168
- ≤0.443
- ≤0.714
- ≤0.894
- ≤1.0
- Vaccination Percentage ≤60.67