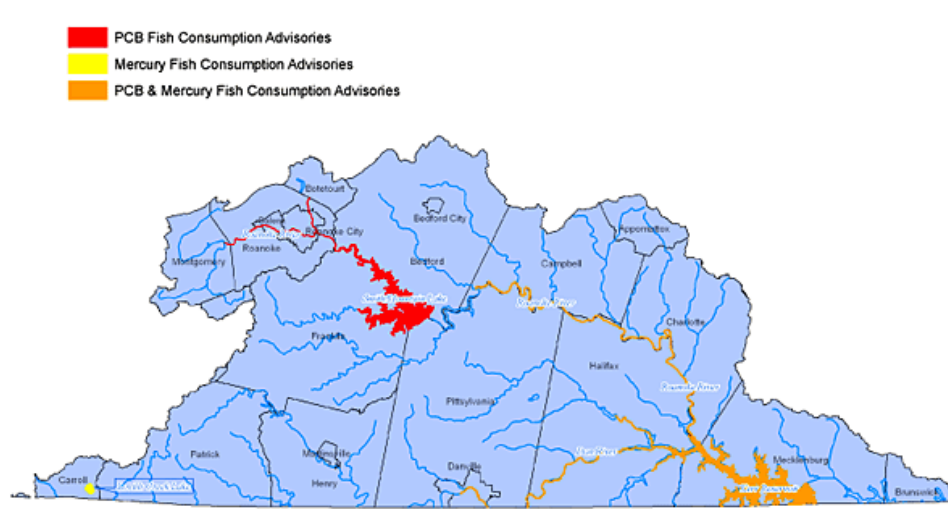


ROANOKE AND YADKIN RIVER BASIN



WATERBODY AND AFFECTED BOUNDARIES	AFFECTED LOCALITIES	CONTAMINANT	SPECIES	ADVISORIES/RESTRICTIONS
Dan River (within the state of Virginia from the Brantley Steam Plant Dam in Danville downstream to the confluence with Roanoke River on John. H. Kerr Reservoir, including its tributaries Hyco River up to Rt. 738 bridge and Banister River up to the Banister Dam. These river segments comprise ~67 miles).	Danville City, Pittsylvania Co., Halifax Co., Mecklenburg Co.	PCBs, Mercury	Flathead Catfish ≥ 32 inches 	DO NOT EAT
		PCBs, Mercury	Flathead Catfish < 32 inches 	No more than two meals/month
		PCBs	Carp 	
		PCBs	Redhorse Sucker 	
		PCBs	Channel Catfish 	
		PCBs, Mercury	Striped Bass 	
		PCBs, Mercury	White Bass 	
		PCBs	White Perch 	
		PCBs, Mercury	Blue Catfish 	
		PCBs	Walleye 	
		PCBs, Mercury	Longnose Gar 	
Mercury	Largemouth Bass 			
Roanoke River (upper section) (from the confluence of North and South Fork Roanoke River near Gaging Station at Lafayette downstream to Niagara Dam including its tributaries Peters Creek up to Rt. 460 bridge crossing and Tinker Creek up to the confluence with Deer Branch Creek near Rt. 115. These river segments comprise ~37 miles).	Montgomery Co., Roanoke Co., Salem City, Roanoke City	PCBs	Carp 	No more than two meals/month
		PCBs	Redbreast Sunfish 	
		PCBs	Redhorse Sucker 	
		PCBs	Smallmouth Bass 	
		PCBs	Largemouth Bass 	
		PCBs	Rock Bass 	
		PCBs	Bluehead Chub 	
Roanoke River/Smith Mountain Lake (from below the Niagara Dam on Roanoke River downstream to Smith Mountain Dam including Blackwater River arm up to the Rt. 122 bridge. These river segments comprise ~13 miles).	Roanoke Co., Bedford Co., Franklin Co., Pittsylvania Co.	PCBs	Flathead Catfish ≥ 32 inches 	DO NOT EAT
		PCBs	Flathead Catfish < 32 inches 	No more than two meals/month
		PCBs	Striped Bass 	
		PCBs	Gizzard Shad 	
		PCBs	Redhorse Sucker 	
		PCBs	Largemouth Bass 	
		PCBs	Carp 	
		PCBs	Channel Catfish 	
Roanoke (Staunton) River (from below Leesville Dam downstream ~ 98 miles to the confluence of Dan River including its tributary Cub Creek up to Rough Creek Road (State Route 695) near Rough Creek)	Pittsylvania Co., Campbell Co., Halifax Co., Charlotte Co., Mecklenburg Co.	PCBs	Carp 	DO NOT EAT
		PCBs	Flathead Catfish ≥ 32 inches 	DO NOT EAT
		PCBs	Flathead Catfish < 32 inches 	No more than two meals/month
		PCBs	Blue Catfish 	
		PCBs	Gizzard Shad 	
		PCBs, Mercury	Striped Bass 	
		PCBs	Channel Catfish 	
		PCBs, Mercury	Walleye 	
		PCBs, Mercury	White Bass 	
		PCBs	Largemouth Bass 	
		PCBs	Redhorse Sucker 	
		PCBs	Sunfish 	
		PCBs	Smallmouth Bass 	
		PCBs	Quillback Carpsucker 	
		PCBs	Spotted Bass 	
		PCBs	White Perch 	
		PCBs	Bluehead Chub 	
PCBs	Rock Bass 			
Kerr Reservoir (within the state of Virginia from the confluence of Dan River and Roanoke River to John H. Kerr Dam including its tributaries Eastland Creek and Tributaries Creek (within the state of Virginia). These river segments comprise ~113 miles).	Mecklenburg Co.	PCBs	Carp 	No more than two meals/month
		PCBs	Channel Catfish 	
		PCBs, Mercury	Largemouth Bass 	
		PCBs, Mercury	White Bass 	
		PCBs, Mercury	Striped Bass 	
		PCBs	Walleye 	
		PCBs	White Perch 	
		PCBs	Smallmouth Bass 	
		PCBs	Redhorse Sucker 	
		PCBs	Flathead Catfish 	
Lovills Creek Lake (entire lake, ~55 acres) (Yadkin River Basin)	Carroll Co.	Mercury	Largemouth Bass 	No more than two meals/month
Lake Gaston (within the state of Virginia from John H. Kerr Dam downstream to VA/NC state line (this segment comprises ~18 miles), and any tributary arm of Lake Gaston in Virginia).	Mecklenburg Co. & Brunswick Co.	Mercury	Walleye 	No more than two meals/month

*A meal is considered to be an eight-ounce (half-pound) serving of fish.

This fish consumption advisory provides meal recommendations on eating certain fish species caught from specified waterbodies. It is recommended to follow the guidance presented on this advisory to reduce your total exposure to fish contaminants. For further information regarding waterbodies sampled or the fish tissue sampling process, contact the [Virginia Department of Environmental Quality](#). For questions about human health risks from exposure to fish contaminants, contact the [Virginia Department of Health's Division of Environmental Epidemiology](#) at 804-864-8182.

This fish consumption advisory is reviewed annually. No changes or updates are required to this advisory based on review of existing data.