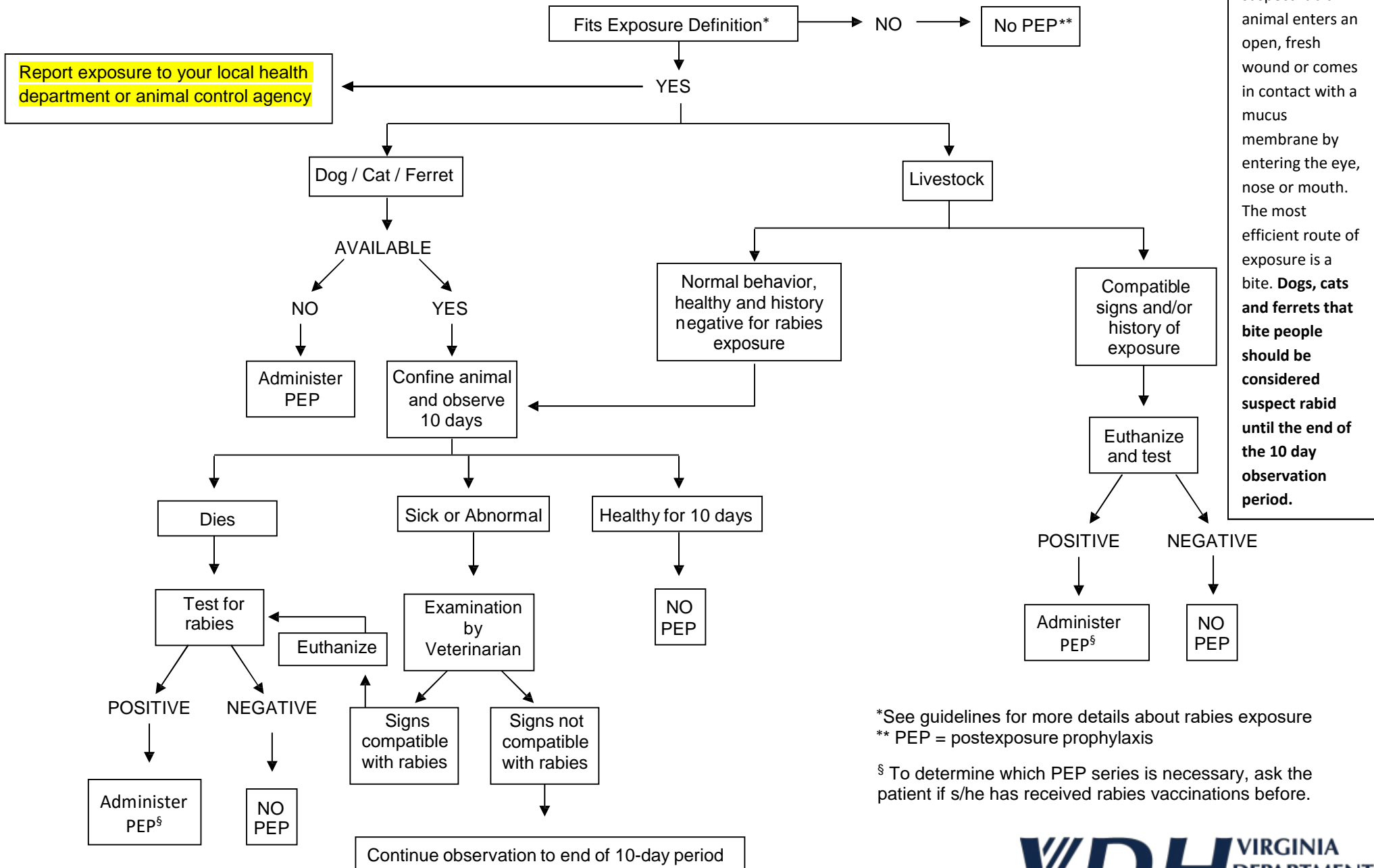


# Virginia Guidelines for Rabies Prevention and Control

<https://www.vdh.virginia.gov/animal-contact-human-health/rabies-control/virginia-guidelines-for-rabies-prevention-and-control/>

## RABIES EXPOSURE DECISION TREE: HUMAN EXPOSED TO DOMESTIC ANIMAL



**Exposure** = any situation where saliva or central nervous system tissue of a confirmed or suspect rabid animal enters an open, fresh wound or comes in contact with a mucus membrane by entering the eye, nose or mouth. The most efficient route of exposure is a bite. **Dogs, cats and ferrets that bite people should be considered suspect rabid until the end of the 10 day observation period.**

\*See guidelines for more details about rabies exposure  
 \*\* PEP = postexposure prophylaxis  
 § To determine which PEP series is necessary, ask the patient if s/he has received rabies vaccinations before.

Last updated: 2/2/2023

