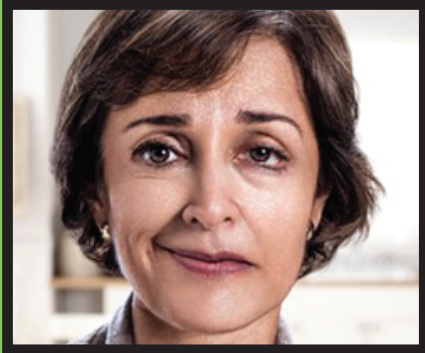


# Be Stroke Smart

View 3-min video



Suddenly, developed a droopy smile  
**Called 911 IMMEDIATELY**  
Arrived at hospital in time for treatment



## GOOD OUTCOME

Has full health • Back at work  
Takes care of her family



Suddenly, developed a droopy smile  
**Did NOT Call 911 IMMEDIATELY**  
Delayed getting medical treatment



## POOR OUTCOME

Permanent Disability • Unable to speak or walk  
Unable to work • Needs family to take care of him

**MINUTES  
MATTER:**  
What will be  
*Your story?*

# BE FAST

▲  
Balance  
Loss

▲  
Eyesight  
Changes

▲  
Face  
Drooping

▲  
Arm  
Weakness

▲  
Speech  
Difficulty

▲  
Time to  
call 911

On Sudden Onset of **ANY** Sign, Call 911 Immediately.

Stroke  
Smart

VIRGINIA

**VDH** VIRGINIA  
DEPARTMENT  
OF HEALTH

Kwikpoint®

Copyright © 2024