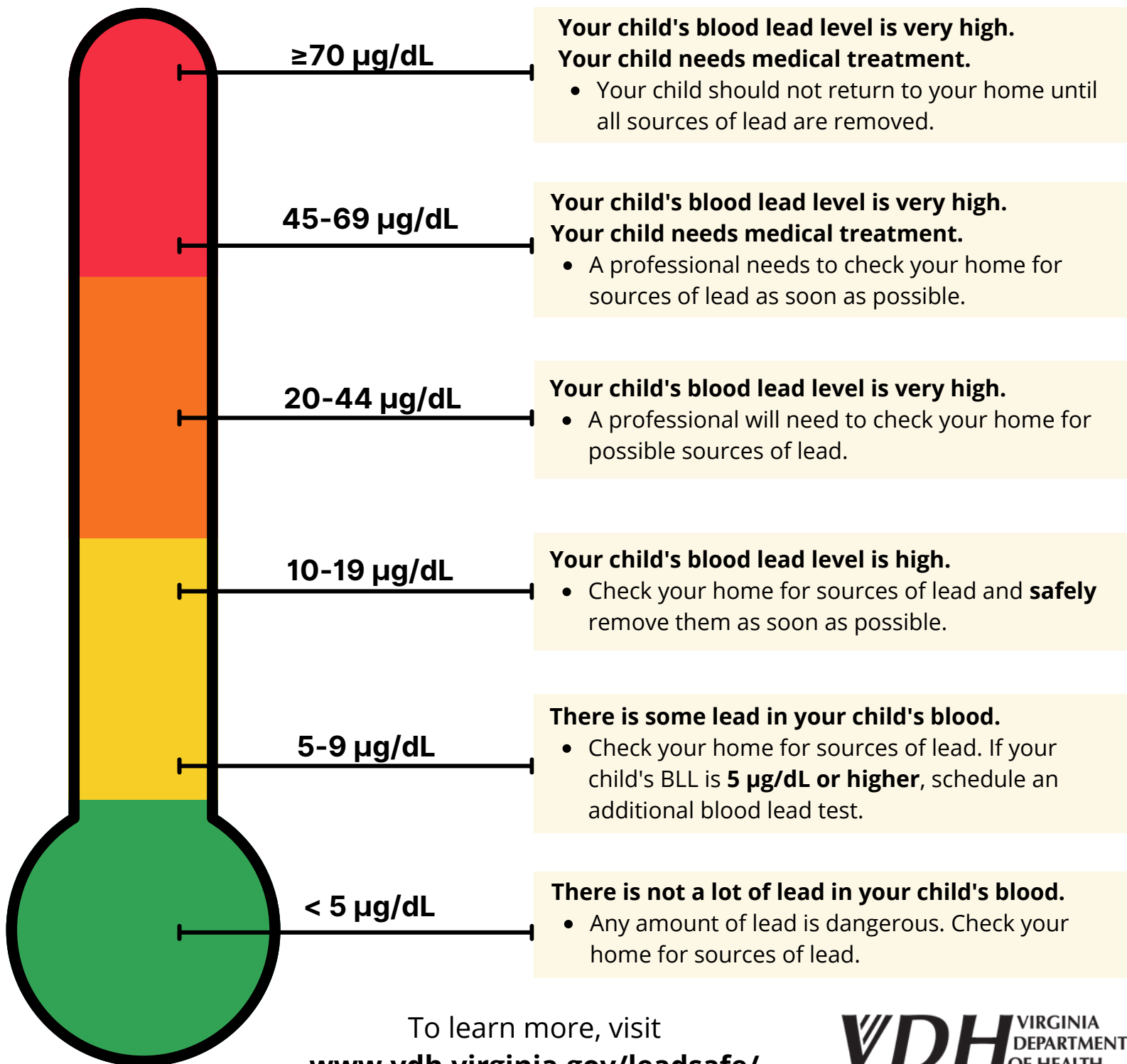


Understanding Your Child's Blood Lead Level



"**Blood lead level**" means the amount of lead found in your child's blood. It is measured in micrograms per deciliter ($\mu\text{g}/\text{dL}$). There is no safe blood lead level. Use the graphic below to learn what your child's blood lead level means, and what next steps to expect after a blood lead test.



To learn more, visit
www.vdh.virginia.gov/leadsafe/