

KNOW SOMEONE WITH MEMORY LOSS?

Subjective Cognitive Decline
Among Latino Adults

1 in 9

Latino adults aged 45 years and older are experiencing (SCD) Subjective Cognitive Decline

Less than half

of Latinos with SCD have discussed their symptoms with a healthcare provider

MEMORY LOSS IS NOT A NORMAL PART OF AGING

52% of Latinos

with SCD had to give up day-to-day activities such as:



Cooking



Cleaning



Taking Medication

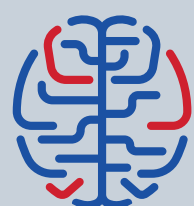
Talk to a healthcare provider about:

Possible treatment

Care planning

Management of chronic conditions

Caregiving needs



USAGAINSTALZHEIMER'S CENTER *for*
BRAIN HEALTH EQUITY

Learn more at usagainstalzhaimers.org

This infographic is supported by Cooperative Agreement NU58DP006781, funded by the Centers for Disease Control and Prevention (CDC). Its contents are solely the responsibility of the authors and do not necessarily represent the official position of the CDC or the Department of Health and Human Services.

SOURCE: Behavioral Risk Factor Surveillance System (BRFSS) as published in Taylor, MMWR July 2018 ; Data from Hispanic Adults in 50 States, Puerto Rico, and the DC: People Aged 45 Years and Older <https://go.usa.gov/xUZT3>