

# Latent Tuberculosis Infection (LTBI) Updates

February 13, 2020

Laura R. Young, MPH, CIC & Jane C. Tingley, MPH

Virginia Department of Health

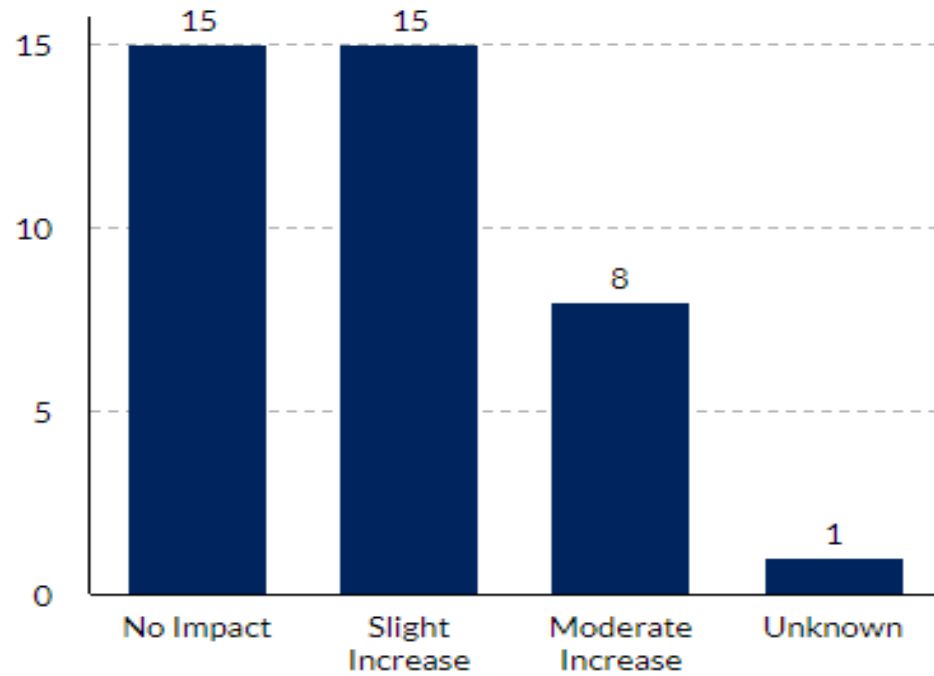
# Agenda

- Pre-Polycom Survey Results
- LTBI Preliminary Data Update
- Expectations Going Forward
- Resources We Can Offer
- Current LTBI Projects
- Questions/Discussion

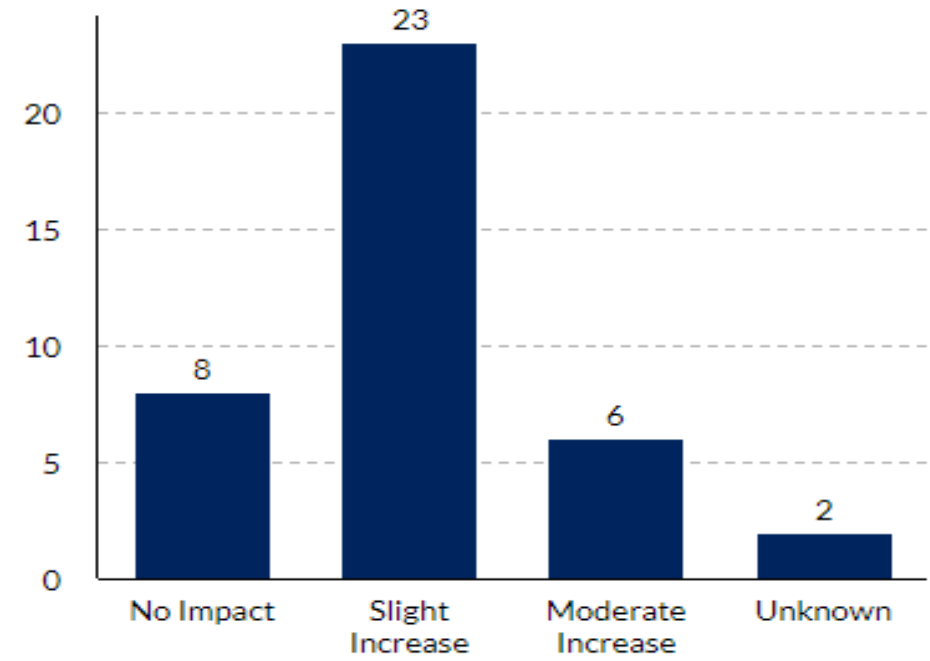
# LTBI SURVEY RESULTS

# LTBI Survey Results

## LTBI-related Calls



## LTBI-related Referrals



# LTBI Challenges

## Provider Challenges

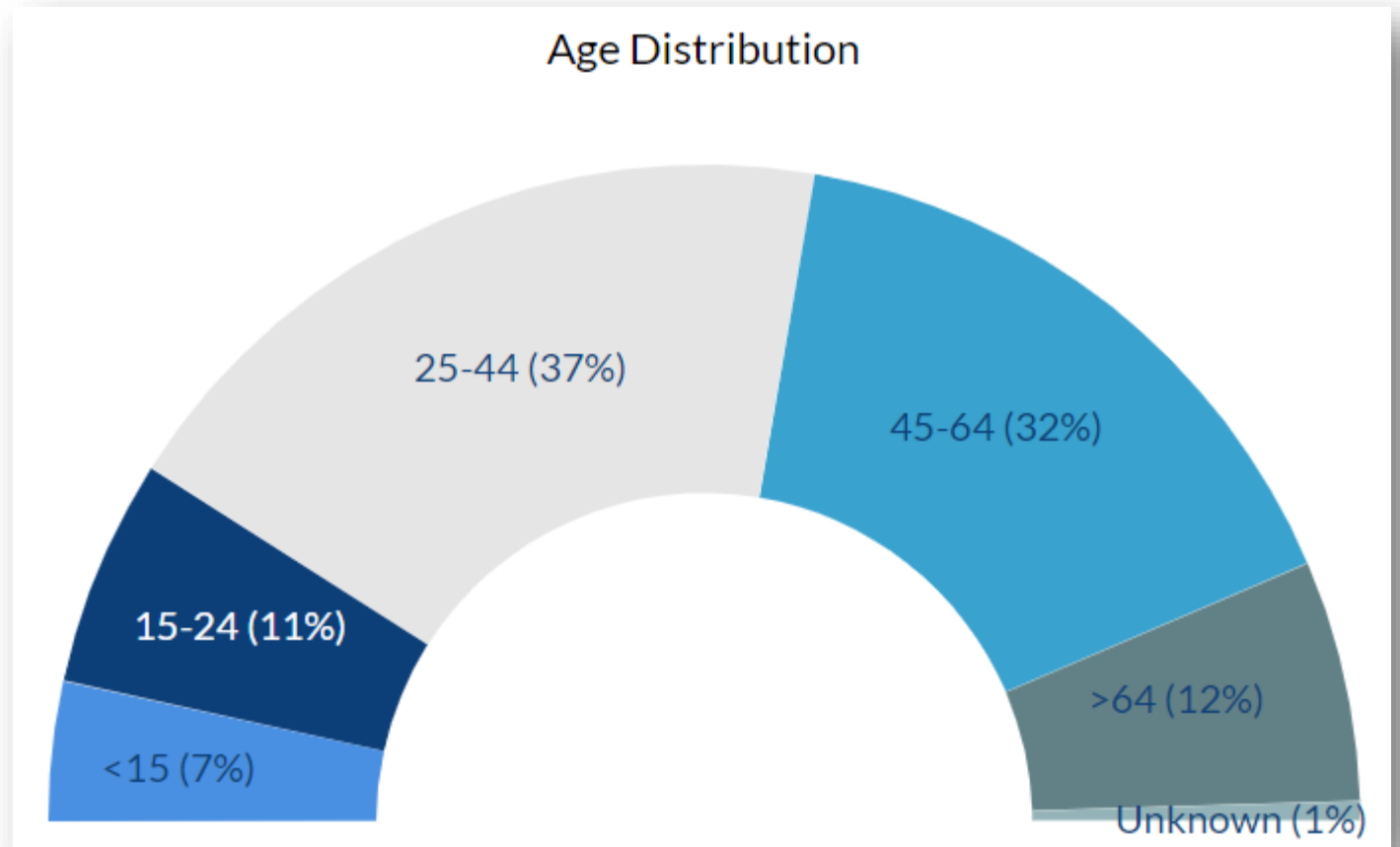
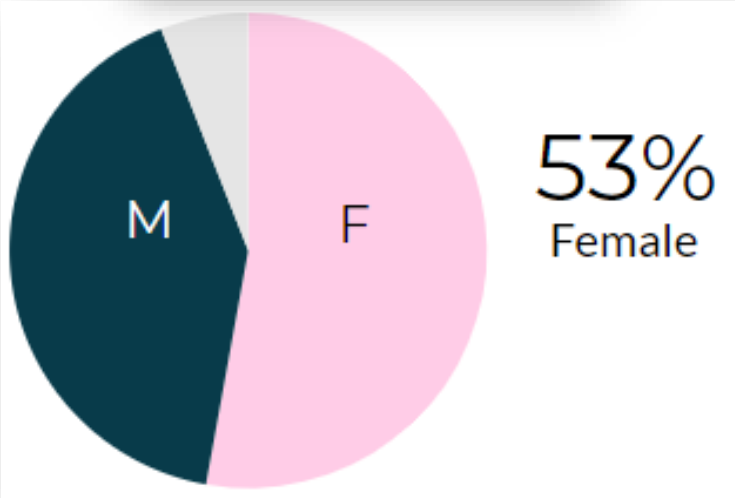
- Providers are still unaware of Code requirement to report
- Providers unclear on how to treat LTBI
- Incomplete follow-up
- Incorrect reading of TSTs
- Difference between LTBI and TB
- Limited use of screening tools
- IGRAs being used to “confirm” TST results

## Reporting Challenges

- Confusion over who and how to report
- Incomplete data (for example, no CXR results, only positive IGRA)

# DATA UPDATE

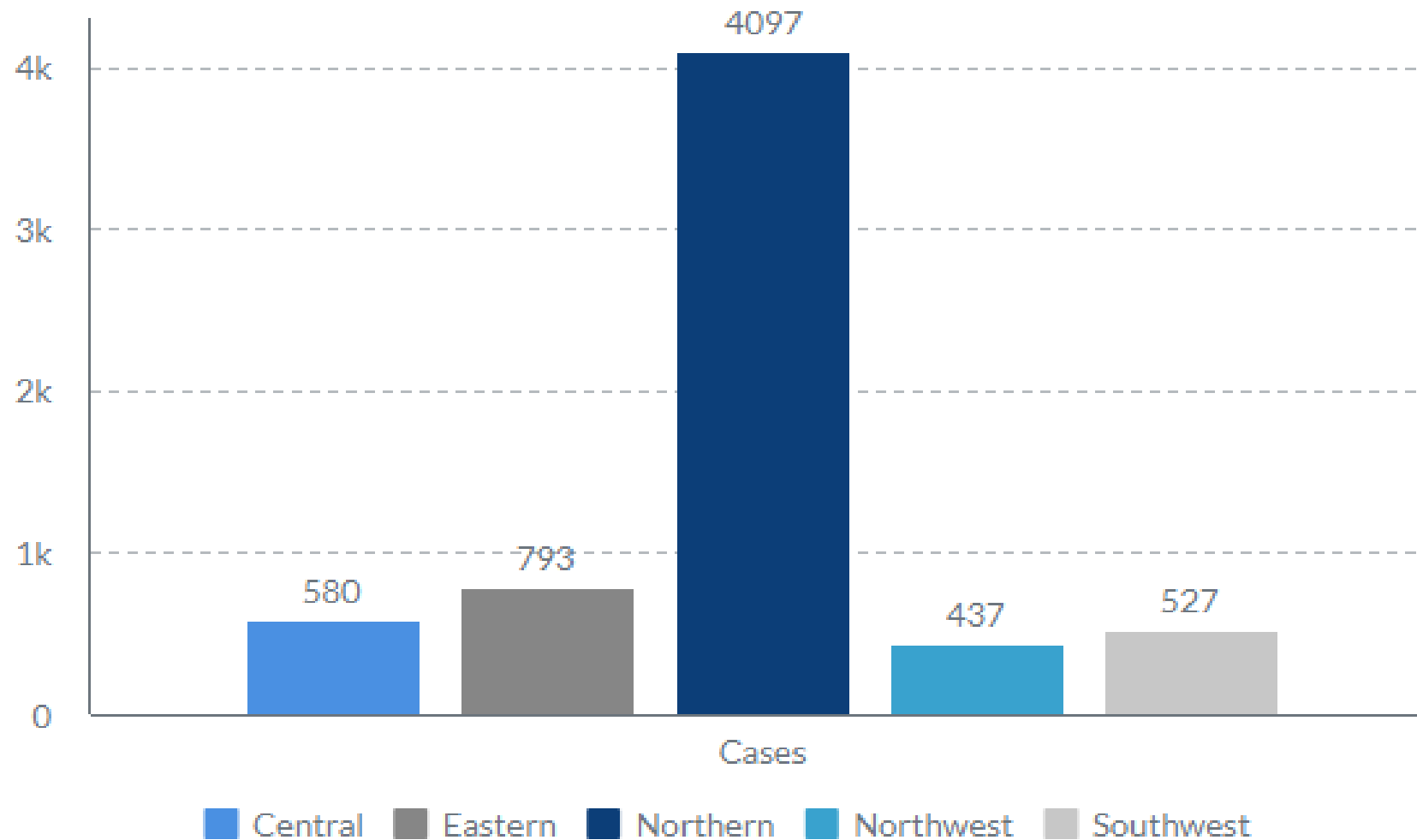
# LTBI Cases Reported in 2019 - Preliminary







# LTBI Cases by Region, Virginia, 2019



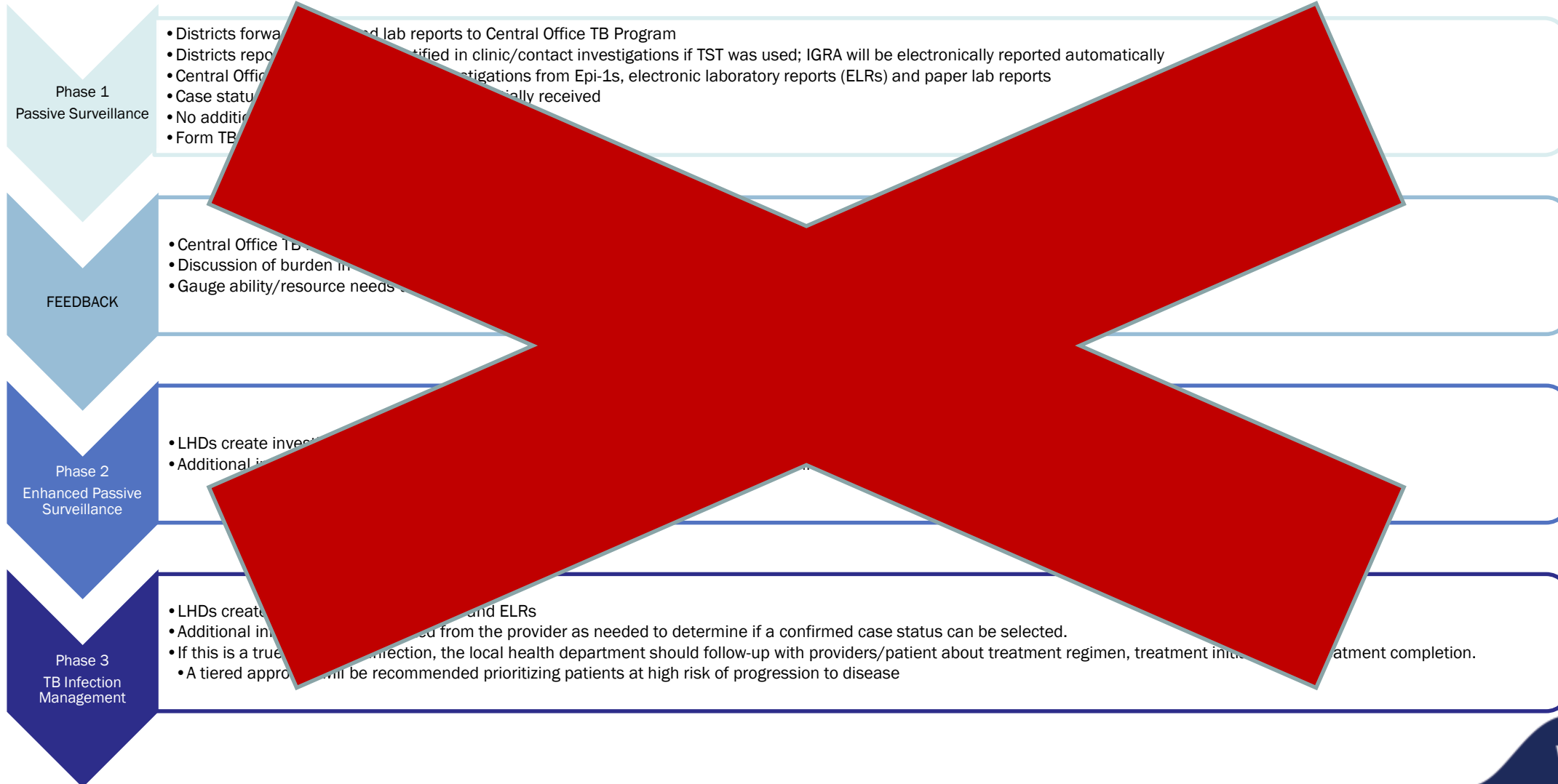
# Top Five Reporters for LTBI

- LabCorp
- Quest Teterboro
- Fairfax Public Health Lab
- Quest Diagnostics –Atlanta
- Quest Diagnostics - Chantilly



# EXPECTATIONS GOING FORWARD

# Original Proposed Plan



# New Plan

## Passive Surveillance Continues

- Districts may forward Epi 1s and lab reports to Central Office TB Program for data entry
- Districts report LTBI identified in clinic setting via direct entry or online morbidity report
- Districts report LTBI identified in contact investigations (CI) via the 502; Central Office TB Program will provide data entry beginning with 2020 CIs
- Central Office TB Program will notify districts of LTBI reported for children <5
- Goal of having someone affiliated with your district TB team with VEDSS access for TB

## Data Driven Projects

- Central Office TB Program is excited to collaborate with and support you
- If your local TB program has capacity and interest in initiating an LTBI project, we are happy to assist you with data, project design and resource/material development
- Projects do not have to be complicated

# LTBI Reporting for Local Health Departments

## What to Report

- All presumptive/confirmed LTBI cases

## When to Report/Forward a report to Central Office

- At LTBI diagnosis for patients identified through clinic
- Upon receipt of report from a community provider
- At completion of a contact investigation through the Final 502

## How to Report

- Confidential Morbidity Report Portal; **OR**
- Fax received reports to VDH TB Program at 804-371-0248; **OR**
- Enter reports directly into VEDSS
- Submit Final 502 for LTBI identified during CI
- Via an alternate method, such as a line list, that captures clinic data

# LTBI Reporting for Community Providers

## What to Report

- All presumptive/confirmed LTBI cases

## When to Report

- At LTBI diagnosis (positive test for infection, x-ray not consistent with TB)

## How to Report

- Confidential Morbidity Report Portal; **OR**
- Fax received reports to LHD or to VDH TB Program at 804-371-0248; **OR**
- Via an alternate method, such as a line list, that captures clinic data

# LTBI Reporting

Tuberculosis

Data & Reports

Education

Forms for Local Health Departments

Special Populations

Screening & Testing

TB Disease

TB Infection (LTBI)

Training

## TUBERCULOSIS

[Report Latent TB Infection \(LTBI\)](#) 

[Local Health Districts - Report New Confirmed/Presumptive Active TB Cases](#) 

[Local Health Districts - Report Initial 502 Information for New Contact Investigations](#) 

The mission of the Tuberculosis (TB) Control program is to control, prevent, and eventually eliminate TB from the Commonwealth of Virginia. The program aims to detect every case of TB in Virginia, assure that every case is adequately and completely treated, and prevent transmission of TB in communities.

[Featured Story](#)  
[Updates](#)  
[Archive](#)



# LTBI Surveillance Data Entry Workflow

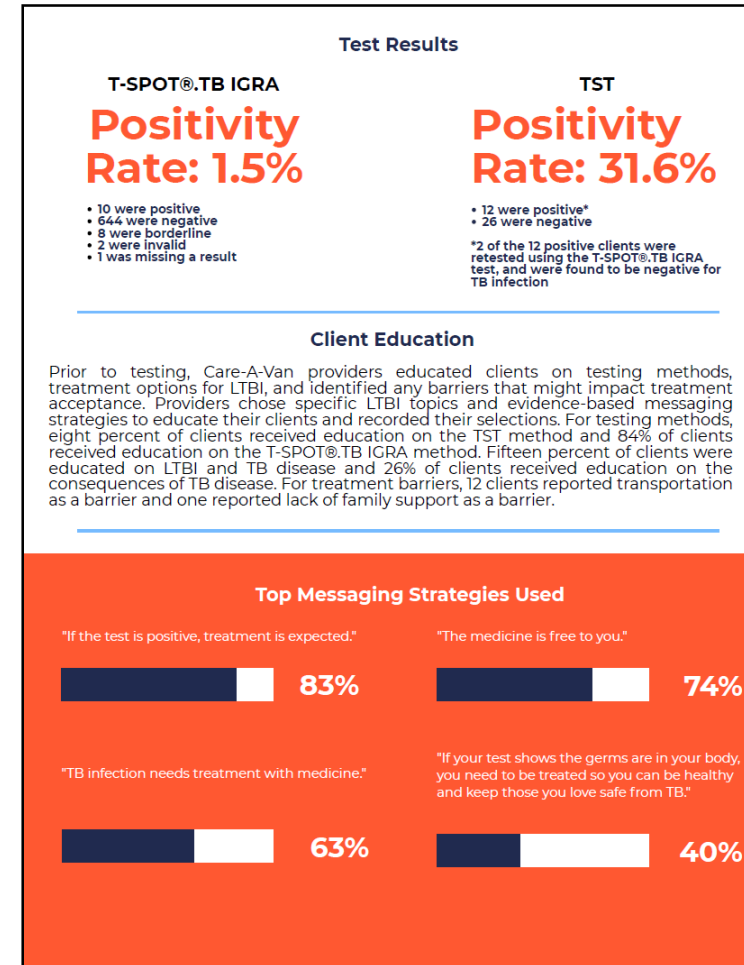
VDH TB Program staff review VEDSS and faxes daily for LTBI reports

- ELRs – investigations created automatically
  - Investigations are updated and closed generally within **one business day**
- Electronic morbidity reports (drop into DRR)
  - Electronic morbidity reports are removed from the DRR within **three business days**
- Faxed morbidity reports/labs
  - Hard copy morbidity reports/labs are entered into VEDSS with investigations opened and closed generally **within one week**

# RESOURCES WE CAN OFFER

# Resources We Can Offer

- Local data snapshots
  - Patient demographics
  - Ordering/Reporting providers
  - Mapping where your known LTBI cases reside
- Project Support
  - Project design
  - In-person education
  - Communications materials
- VEDSS/RVCT training
- Dashboard
- Estimates



# CURRENT LTBI PROJECTS

# Central Office–District Collaborative Projects

- Bon Secours Care-A-Van
- Eastern Shore Migrant Farm Workers Screening, Testing, and Treatment Project
- Supporting NOVA Task Force



*I thought the TB vaccine would protect me from TB.*

## **WAS I WRONG?**

The TB (tuberculosis) vaccine won't always protect you. Ask yourself:

- **Have you had a cough that won't go away?**
- **Have you lost weight?**
- **Do you have night sweats?**

If you got the vaccine and have these symptoms, see a doctor.

**TB CAN BE TREATED AND CURED.**  
Learn more about TB at [loudoun.gov/health](http://loudoun.gov/health) or by calling 703-777-0236.

A collage of four people's faces: a man with glasses, a woman, a man, and a woman.

# Current LTBI Projects - Districts

- Lunch and Learns with private physician offices
- Education and Community Outreach
  - Targeted testing for health providers, including medical students and outreach workers
  - Testing methods and appropriate use
  - LTBI treatment
  - Risk assessment for clinic and community service board employees
  - Education for schools and Head Start
- Local coordination and training
  - Local case review
  - TB Contact Investigation

# QUESTIONS & DISCUSSION

# Contact Us

Laura R. Young, MPH, CIC

TB Epidemiologist

[laura.r.young@vdh.virginia.gov](mailto:laura.r.young@vdh.virginia.gov)

804-864-7922

Jane C. Tingley, MPH

LTBI Epidemiologist

[jane.tingley@vdh.virginia.gov](mailto:jane.tingley@vdh.virginia.gov)

804-864-7921