

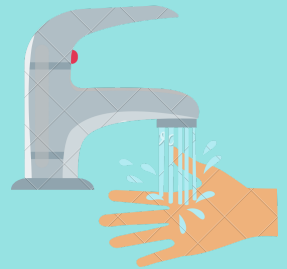
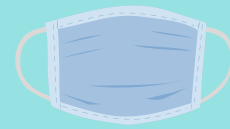
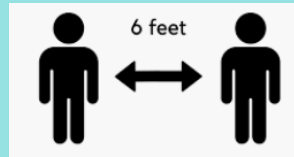
# CORE PRINCIPLES FOR SCHOOL NURSES 2020

1

## PROPER USE OF PPE, HANDWASHING & PHYSICAL DISTANCING

Remember the 3 W's

- wear your mask
- wash your hands
- watch your distance



2

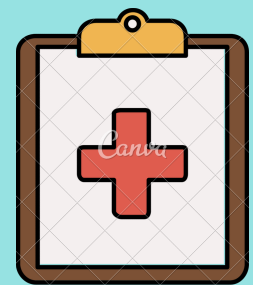
## FACE SHIELDS & MASKS WORN IN CLINIC

N95 masks require FIT testing



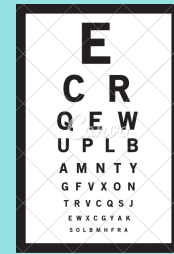
3

## PHYSICALS & IMMUNIZATIONS ARE REQUIRED FOR SCHOOL START



4

## HEARING & VISION SCREENINGS AS USUAL



5

## EMERGENCY ACTION PLANS NEEDED

Asthma Action Plans, DDMP, Seizure Management



6

## AVOID AEROSOLIZED PROCEDURES AVOID NEBULIZERS



7

## SEPARATE ROOM FOR STUDENTS OR STAFF WITH SYMPTOMS



8

## NO EATING IN CLINIC OR SYMPTOM OBSERVATION ROOM

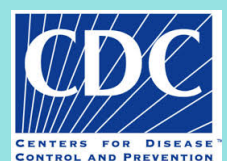


9

## RETURN TO SCHOOL GUIDANCE

Use guidance from CDC to develop local policies:

<https://www.cdc.gov/coronavirus/2019-ncov/community/schools-childcare/symptom-screening.html>



10

## DEVELOP PARTNERSHIPS WITH LOCAL HEALTH DEPARTMENT

