
Virginia COVID-19 Data Update

March 25, 2022



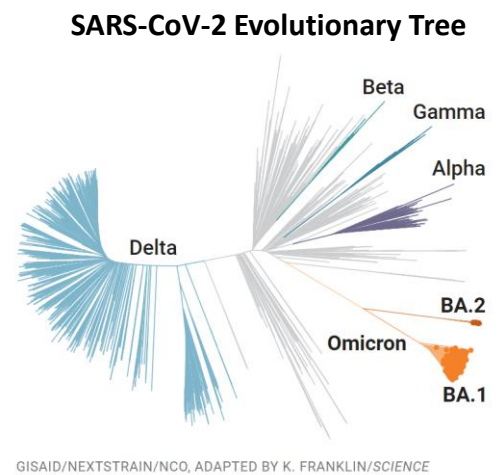
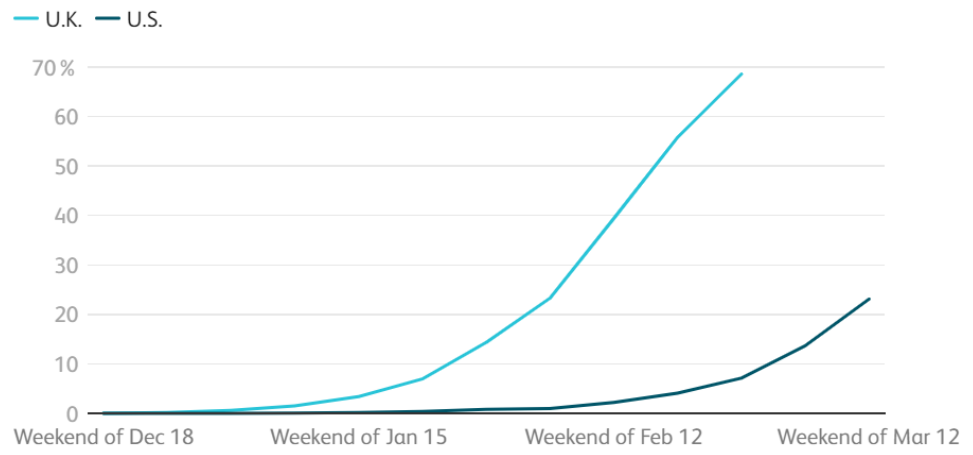
**VIRGINIA'S
HEALTH
IS IN OUR
HANDS.**

Do your part,
stop the spread.

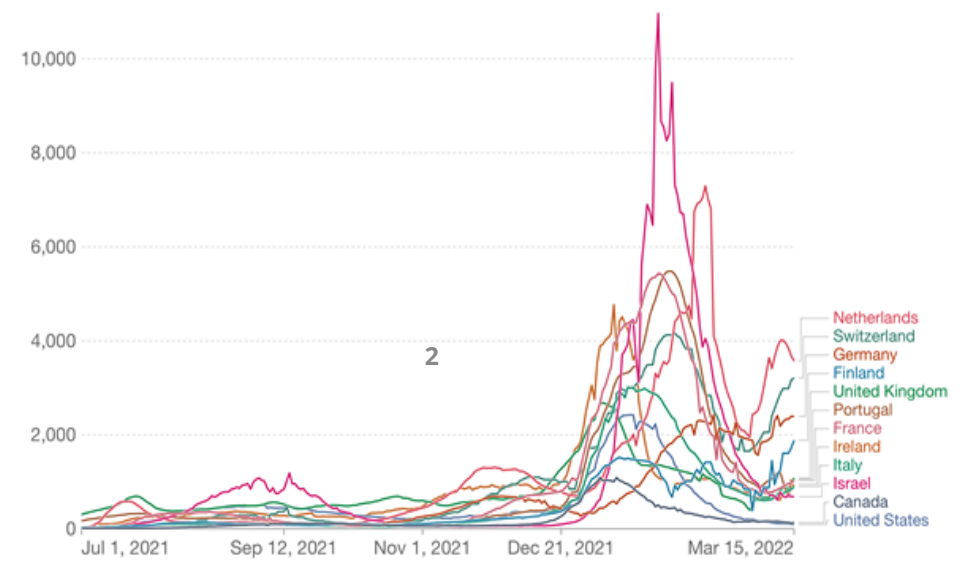
- BA.2 is increasing in the U.S., and as of 3/19/22 accounts for 35% of cases
- Estimated to be 50-60% more transmissible than parent
- Closely monitoring European countries where BA.2 has become the dominant variant
 - Increased cases for 2 consecutive weeks after declining for 6 weeks
 - Factors include increased infectivity associated with BA.2, waning immunity from vaccination or prior infection, and relaxation of mitigation measures

BA.2 makes up a far higher share of COVID-19 cases in the U.K. than in the U.S.

The new Omicron subvariant is spreading in the U.S., but not nearly as much as in the U.K.



Daily new confirmed COVID-19 cases per million people
7-day rolling average. Due to limited testing, the number of confirmed cases is lower than the true number of infections.



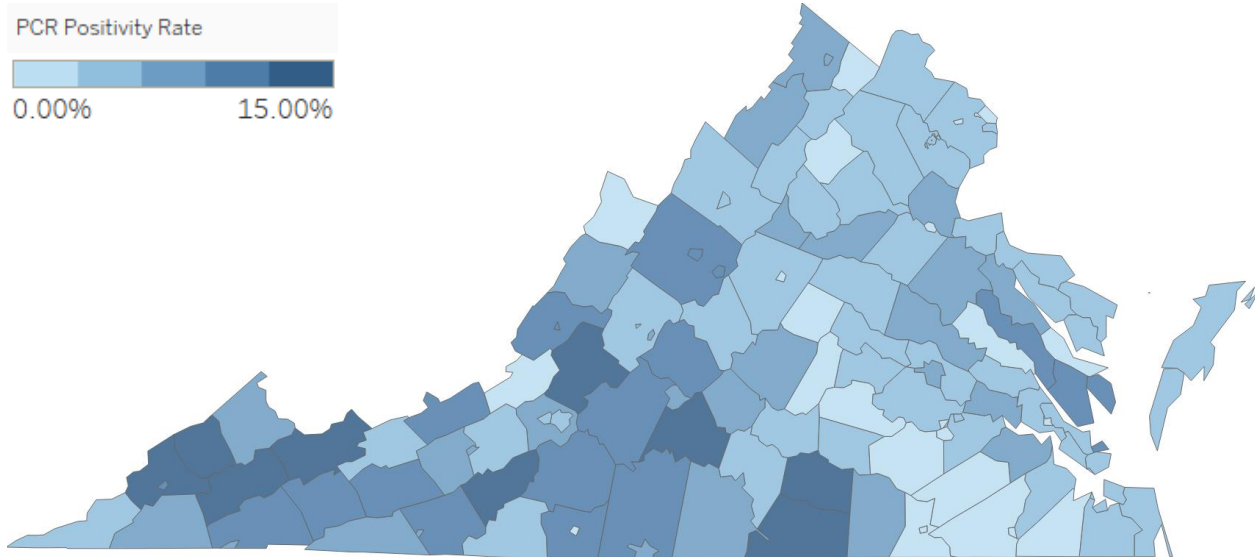
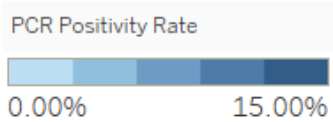
COVID-19 Positivity Rates by Locality

Updated 3/18

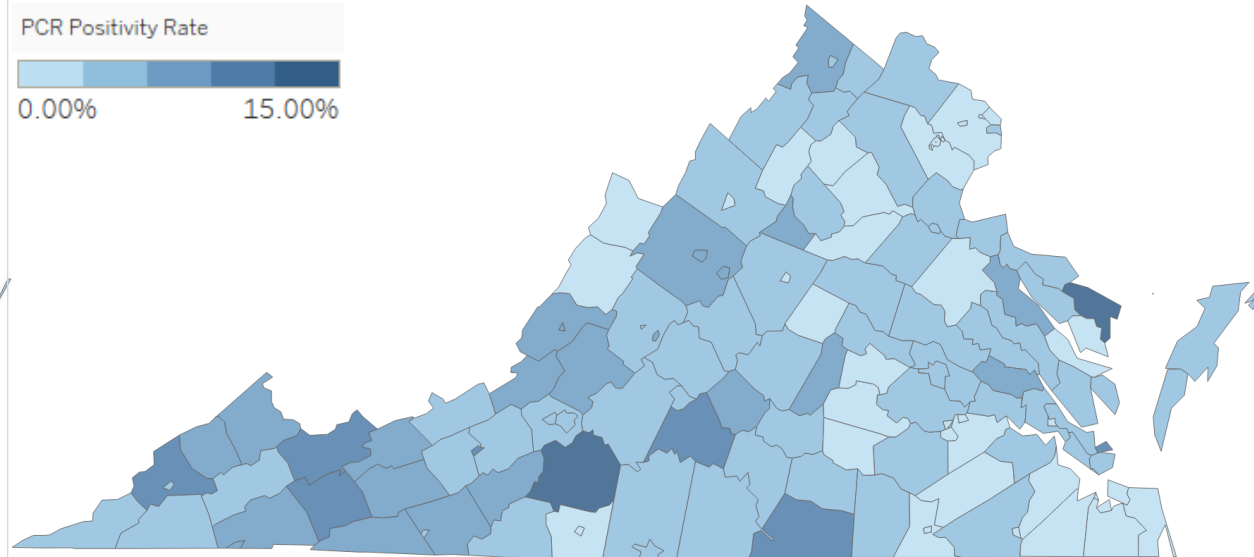
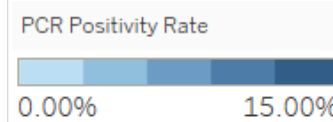
The map below shows a gradient of every Virginia locality and its corresponding 7-day moving average positivity rate. Darker shades of blue indicate higher locality positivity rates. **3% of Virginia localities have surpassed a 10% positivity rate** for the 7-day period from 3/6-3/13, which is a 14-percentage points decrease in positivity compared to the prior reporting period ending on 3/5. **0% of localities have surpassed a 30% positivity rate.**

PCR Positivity Rate for 7-Day Period

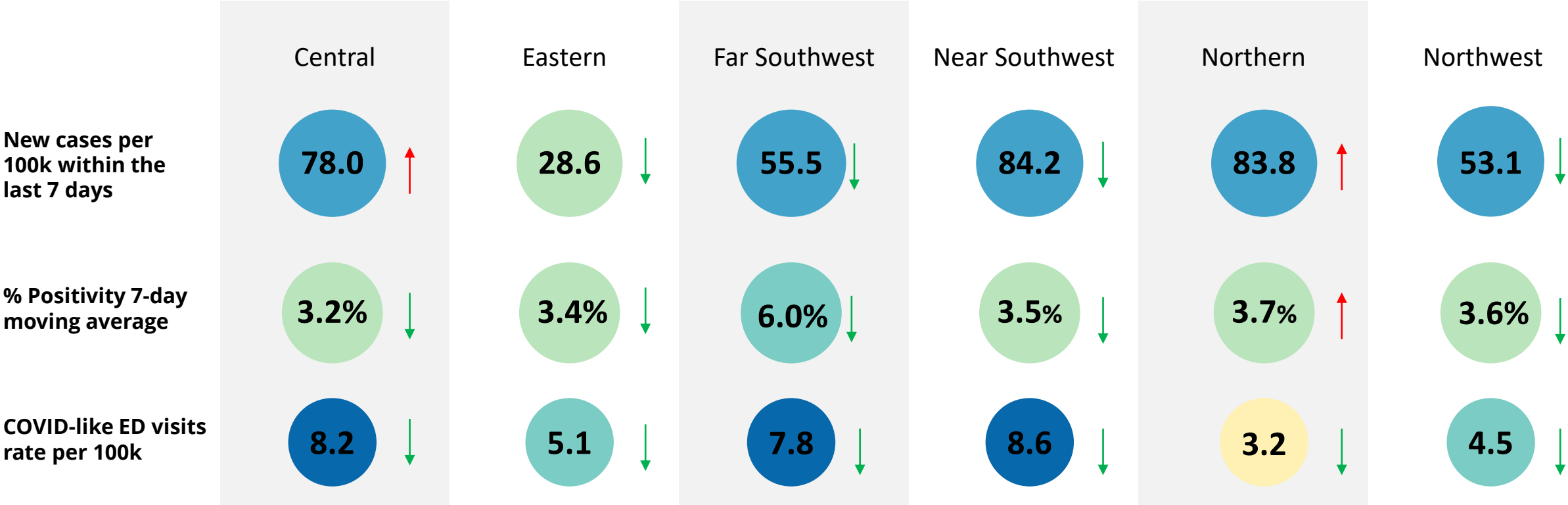
2/27/2022 - 3/5/2022



3/6/2022 - 3/13/2022



Metrics date: 3/24/2022



Burden	Level 0	Level 1	Level 2	Level 3	Level 4
New Cases	<10	10-49		50-100	>100
% Positivity	<3	3-5	5-8	8-10	>10
CLI ED Visits	<4		4-5.9		≥6

Symbol	Trend
↑	Increasing
↓	Decreasing
○	Fluctuating

National Trends

- The United States case rate per 100,000 population in the last 7 days has decreased to **59.6** (-17.1%)
- National new hospitalizations of confirmed COVID-19 cases in the last 7 days have decreased to **2,121** (-25.4%)
- The national death rate per 100,000 population in the last 7 days has decreased to **2.1** (-16.0%)

Virginia Trends

- **Case rate per 100,000** population in the last 7 days decreased to **75.7** (-9.2%)
- Compared to last week, **Cases by Date Reported** decreased to **942 (7-day MA) per day** (-1.8%)
- **Hospitalizations** decreased to **408 per day** (-21.5%)
- **Deaths** for the week of 3/12/22 **decreased** to **20 per week** by date of death reporting (-81.1%)
- Approximately **17,172 tests (PCR + antigen) were conducted per day** over the past 7 days as of 3/18/2022
- **As of 3/22/22, the 7-day PCR positivity rate is 3.7%**, which represents a decrease (-0.5%) to the positivity rate of 4.2% last week
- Approximately **3% of Virginia localities** have a positivity rate **above 10%**, for the 7-day period from 3/6-3/13
- **No Virginia localities** have a positivity rate **above 30%**, for the 7-day period from 3/6-3/13

Regional Metrics

- Regional metrics indicate that the downward trend for new cases per 100K, percent positivity, and COVID-like ED visits are mostly decreasing across the regions.
 - New cases per 100K are decreasing in the Eastern, Near Southwest, Far Southwest, and Northwest regions **and increasing in the Central and Northern Regions.**
 - % positivity is decreasing in Central, Eastern, Near Southwest, Far Southwest, and Northwest in the last week. **Although no regions exceed 10% positivity rates, percent positivity is increasing in the Northern regions.**
 - COVID-like ED visits are **decreasing** in all regions over the last week. COVID-like ED visits are at burden level 4 in the Central, Far Southwest, and Near Southwest regions; burden level 2 in the Northwest and Eastern regions; and burden level 0 in the Northern region

Virginia

- Virginia's reported **cases in the last 7 days** have decreased to **75.7 (-9.2%)** per 100K while national cases are at **59.6 (-17.1%)** per 100K
- **Hospitalizations** decreased to **408 per day (-21.5%)**
- **Deaths** for the week of 3/12/22 **decreased** to **20 per week** by date of death reporting **(-81.1%)**
- Approximately **3% of Virginia localities** have a positivity rate **above 10%**, for the 7-day period from 3/6-3/13