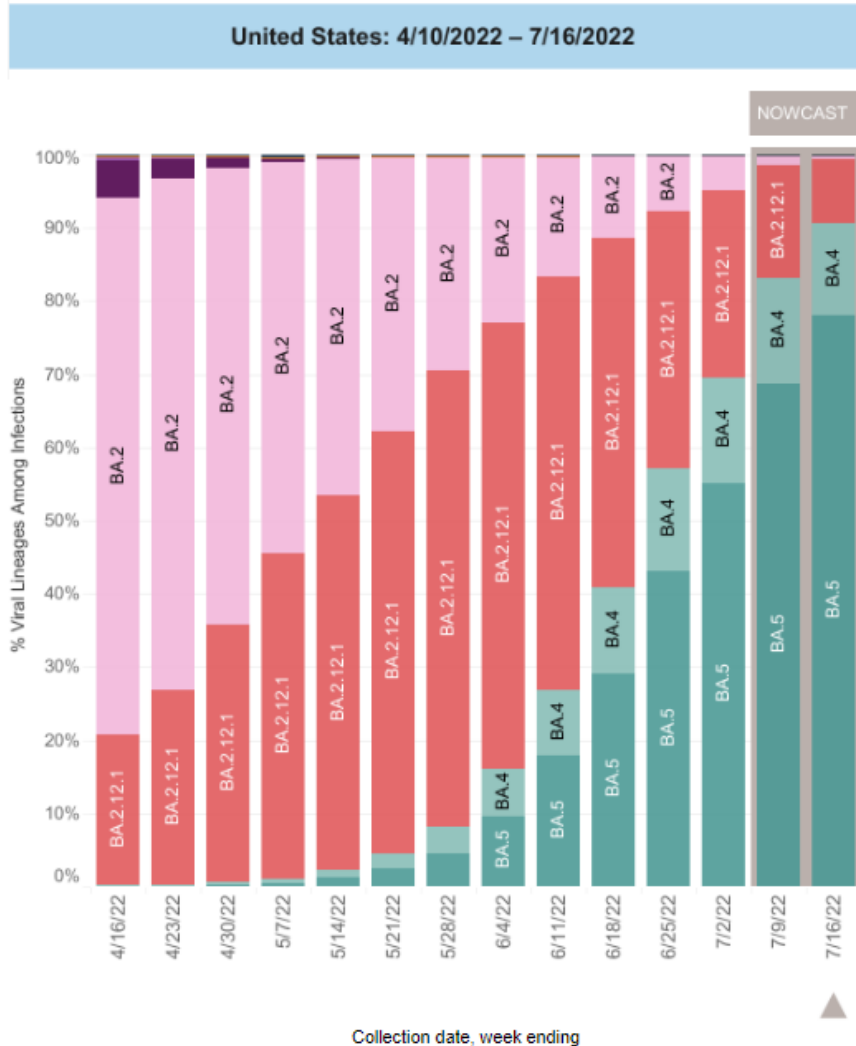

Virginia COVID-19 Surveillance Data Update

July 19, 2022



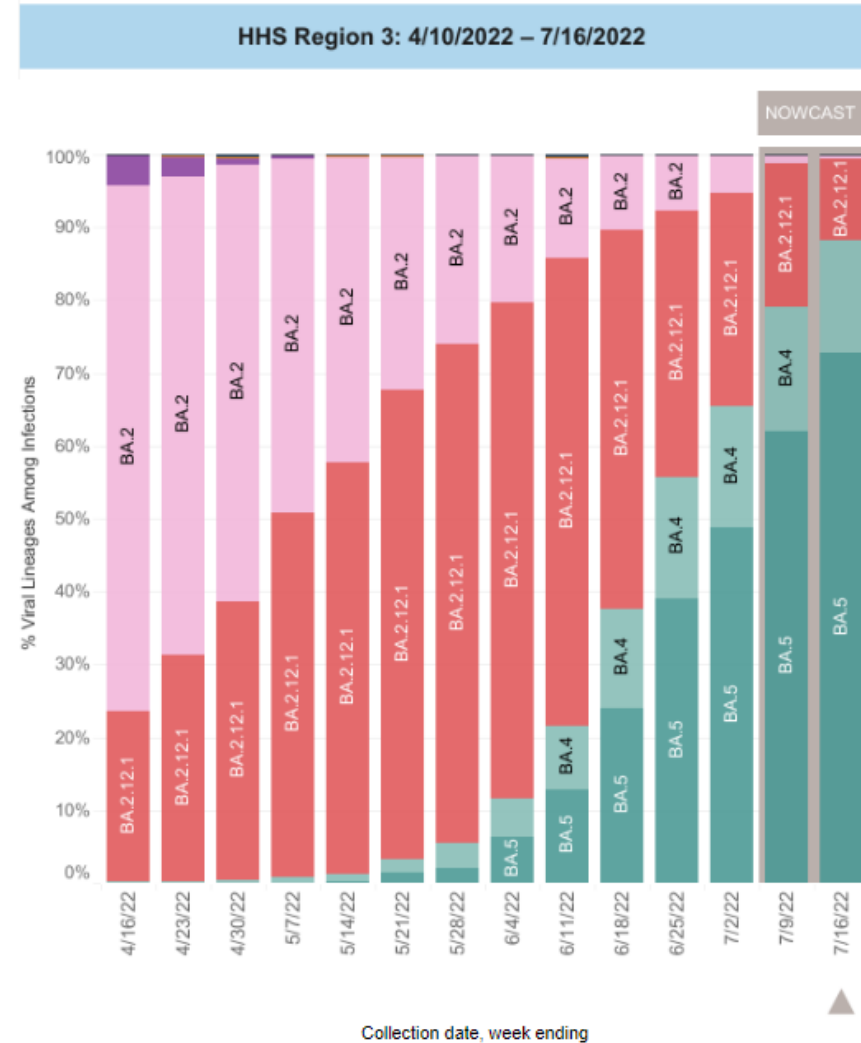
Nationally: As of 7/16/22

- BA.5 accounts for 77.9% of cases
- BA.4 accounts for 12.8% of cases
- BA.2.12.1 accounts for 8.6% of cases

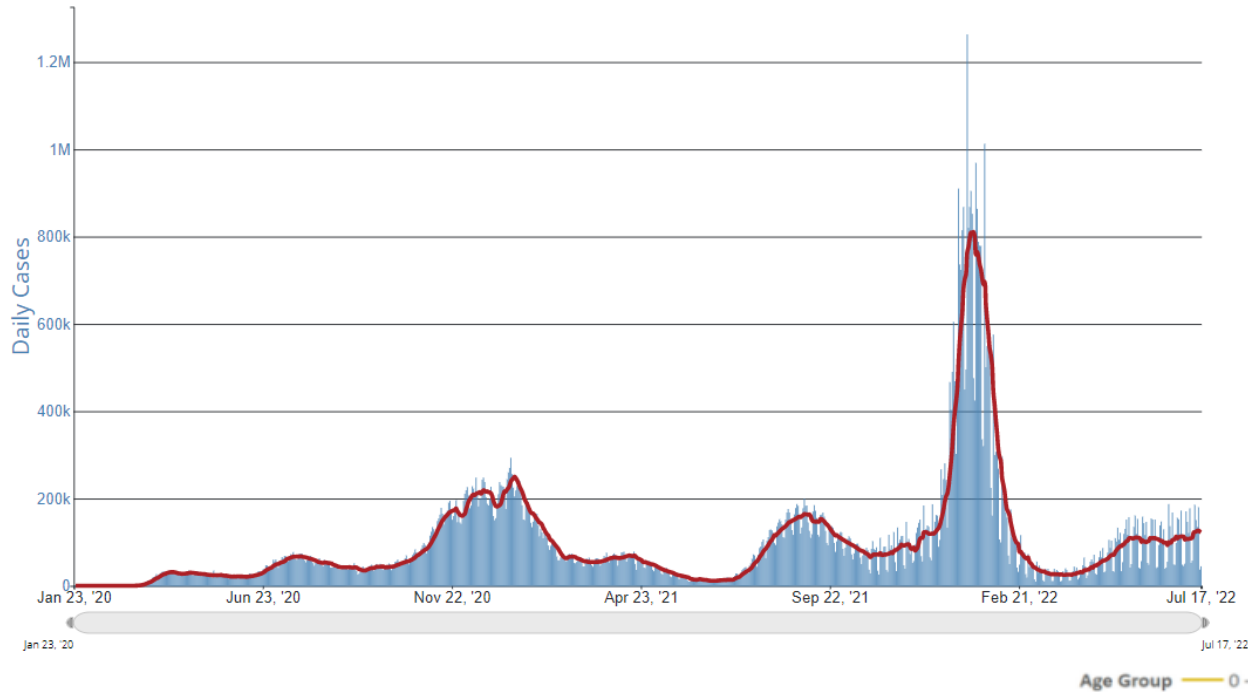


HHS Region 3: As of 7/16/22

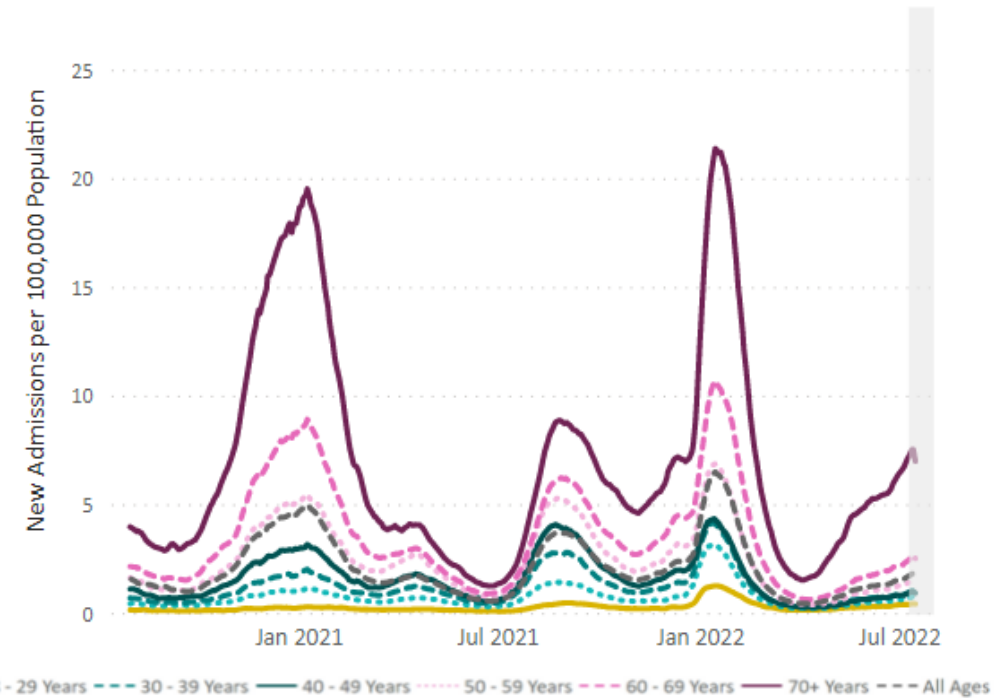
- BA.5 accounts for 72.7% cases
- BA.4 accounts for 15.4% of cases
- BA.2.12.1 accounts for 11.3% of cases



Daily Trends in Number of COVID-19 Cases, United States



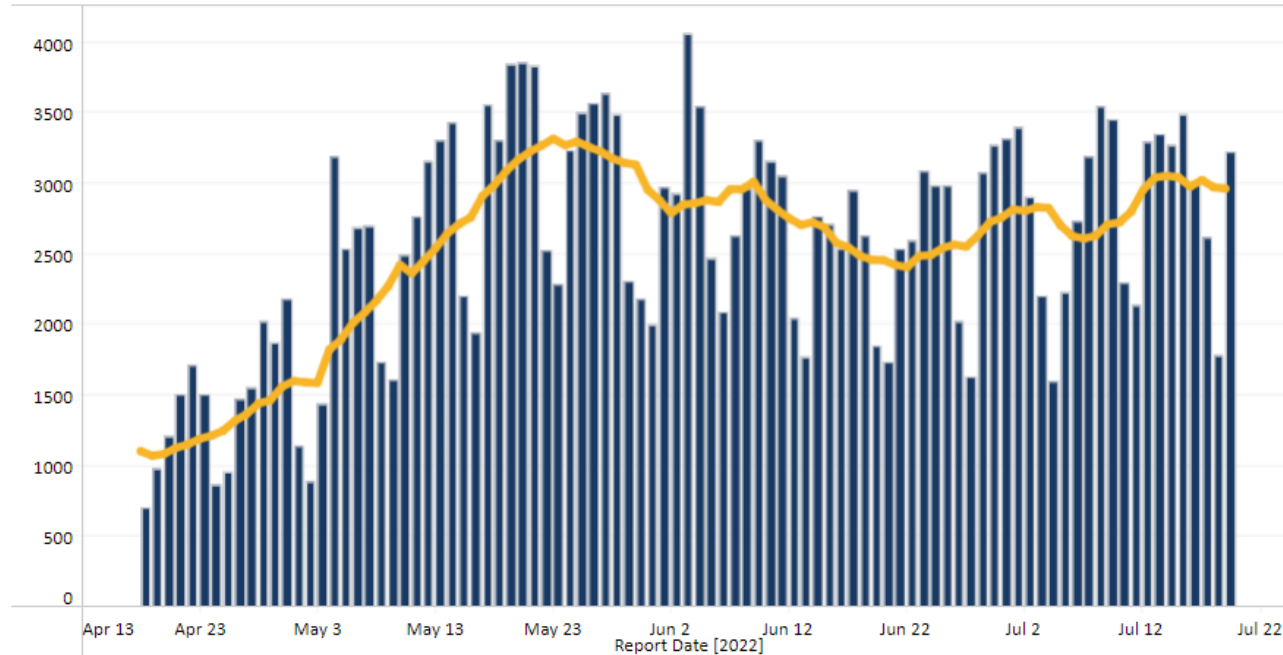
New Admissions of Patients with COVID-19, United States, By Age Group



*Compared to last week:

- **Cases increased** to 122,639 per day (+11.1%)
- **New Hospitalization admissions increased** to 5,658 per day (+2.0%)
- **Deaths increased** to 336 per day (+5%)

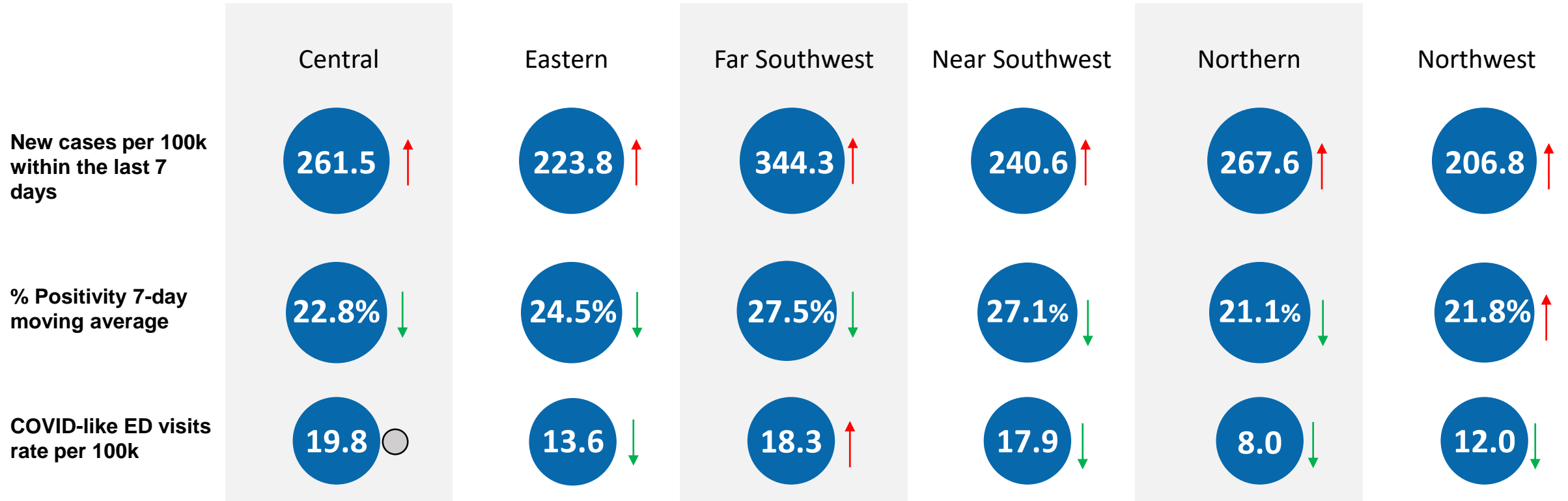
Total Cases by Date Reported, Virginia



*Compared to last week:

- **Cases increased** to (7-day MA) from 2,954 per day (+0.3%)
- 7-day moving average of **new deaths is 10**

Metrics date: 7/17/2022



Burden	Level 0	Level 1	Level 2	Level 3	Level 4
New Cases	<10	10-49		50-100	>100
% Positivity	<3	3-5	5-8	8-10	>10
CLI ED Visits	<4		4-5.9		≥6

Symbol	Trend
↑	Increasing
↓	Decreasing
○	Fluctuating