

**COVID-19 Therapeutics Bi-Weekly Update**  
**August 8th, 2022**

Process and logistics updates

**Bebtelovimab USG Supply Ending**

Please be aware of the following important changes regarding the United States Government (USG) supply of Bebtelovimab:

1. Bebtelovimab USG supply is expected through the week of August 15th at full threshold and August 22nd at lower threshold.
2. Bebtelovimab is expected to be commercially available for purchase starting the week of August 15, 2022. States/territories and providers will be eligible to purchase directly through the distributor; Lilly is not planning state-specific procurement contracts. Information on how commercial access to Bebtelovimab can be found in the next section.

**As commercial product becomes available, please consider leveraging USG supply to fill gaps for the under and uninsured within your jurisdictions.**

Consequently, we encourage you to plan accordingly and be prepared for potential limitations in Bebtelovimab order fulfillment.

At this time we are not certain when Bebtelovimab ordering capabilities will be turned off in HPOP, but please be aware that supply is low and is not expected to be replenished by the federal government once depleted. Additionally, Bebtelovimab reporting requirements even after the end of USG supply is currently being discussed and more information is expected soon.

**Paxlovid Dispensing Rates in Various SVI Localities**

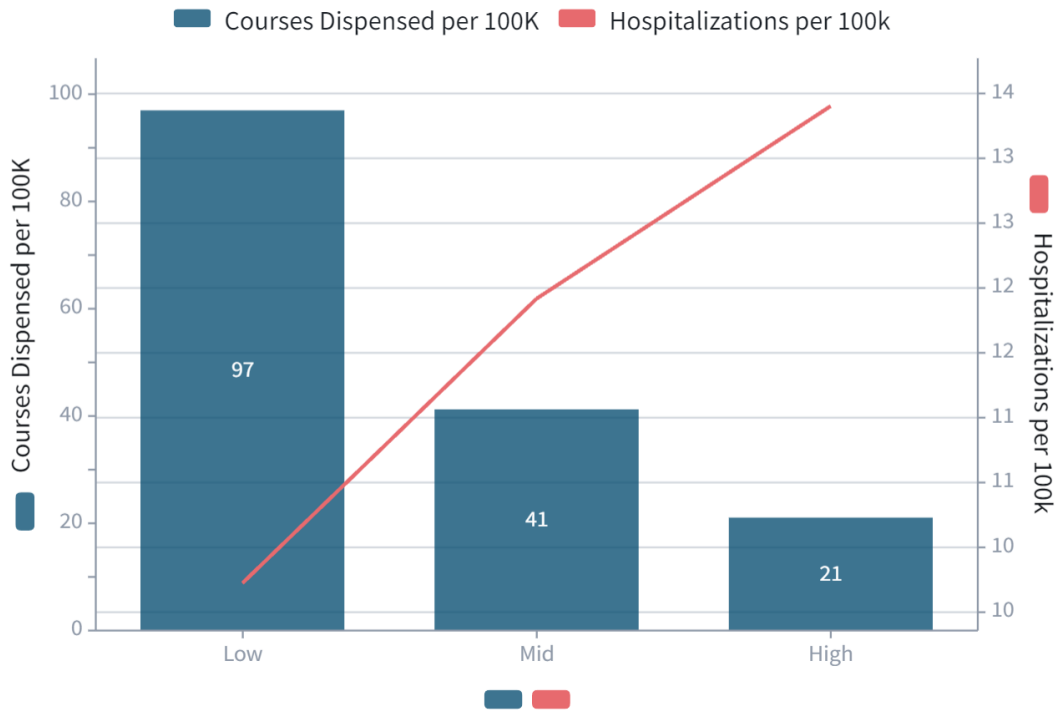
In reviewing administration data and comparing against hospitalizations, it revealed that Paxlovid is being dispensed at a lower rate in areas of medium to high [social vulnerability index \(SVI\)](#) across the Commonwealth (Image 1). Some of the reasons for the low dispensing rates in these communities include:

- Patients having the knowledge and resources to test for COVID-19 upon symptom onset
- Patients having the knowledge and resources to access a healthcare provider if positive
- Providers prescribing alternative therapies, including Molnupiravir and Bebtelovimab

Paxlovid is available at clinical sites in these communities and medium and high SVI counties actually have a higher number of courses per population pre-positioned than compared to low SVI counties (Image 2). We strongly encourage providers to assess all COVID-19 positive patients for Paxlovid eligibility and prescribe Paxlovid if appropriate. Providers can locate Paxlovid using the [COVID-19 therapeutic locator tool](#).

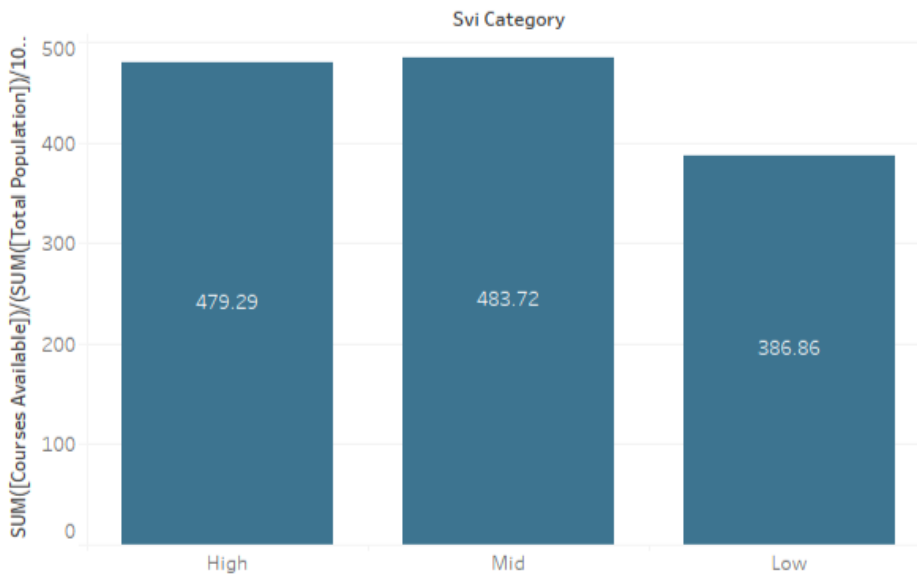
If you'd like facility specific information please reach out to covid19therapeutics@vdh.virginia.gov.

**Image 1. Paxlovid Courses Dispensed and New COVID Hospitalizations per 100K by EDI Category**

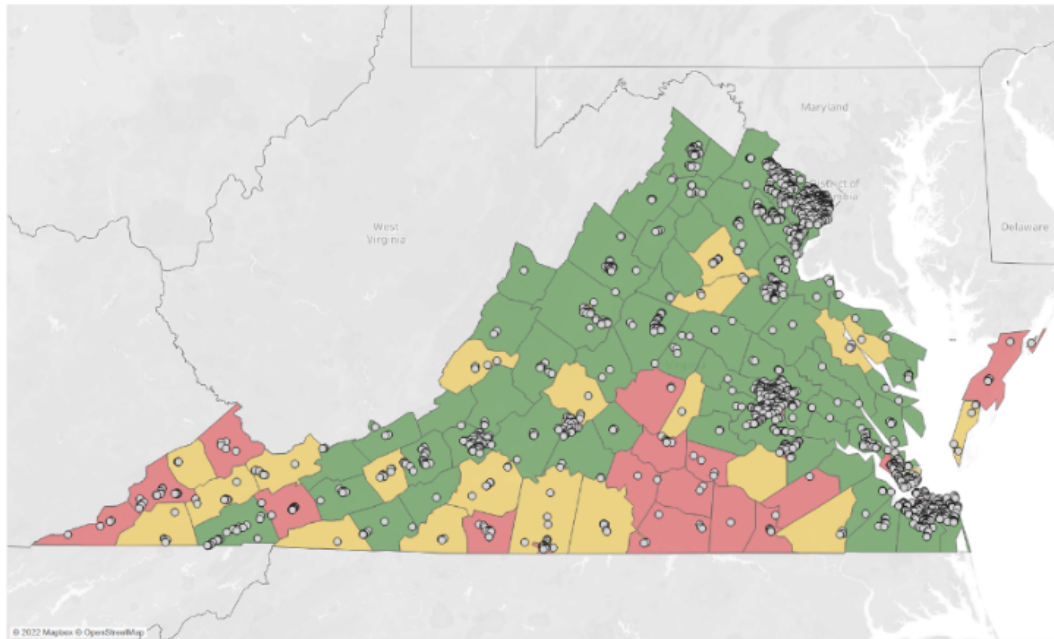


**Image 2. Paxlovid Availability in Low, Medium and High SVI localities as of August 3rd, 2022**

Paxlovid Courses Available per 100k Population, by County SVI Category



## Locations of Paxlovid Providers vs County SVI Category



### Svi Category

- High
- Mid
- Low

## Paxlovid Courses Available by County SVI Category

Svi Category	Courses Available	Total Population	Courses Avail. per 100k
High	7,122	1,485,948	479
Mid	4,043	835,811	484
Low	22,902	5,920,038	387

### Deployment of Additional Paxlovid Courses by Feds

Equitable distribution of COVID-19 therapeutics remains a high priority. In an effort to reach vulnerable communities, the federal government launched a new initiative to pre-position Paxlovid in areas of high social vulnerability. Emails were sent to nearly 9000 providers for a one-time distribution of 20 courses of Paxlovid. The outreach targeted sites in counties with high SVI and low dispensing rates of oral antivirals. The goal was to make the product more readily available to quickly treat patients in vulnerable areas.

### Bebtelovimab Commercial Access

Sites with **existing** AmerisourceBergen Accounts:

- Immediate access to Bebtelovimab will be granted to all existing AmerisourceBergen accounts

Sites **without** an existing AmerisourceBergen Account:

- Sites will need to register for an AmerisourceBergen account
- Contact: [asdaccountsetup@amerisourcebergen.com](mailto:asdaccountsetup@amerisourcebergen.com)

AmerisourceBergen will sell to licensed and approved customers **regardless** of current HPOp participation.

Additional Support: For any questions regarding access to Bebtelovimab contact [c19therapies@amerisourcebergen.com](mailto:c19therapies@amerisourcebergen.com)

### Paxlovid Shelf-Life Extension: Drug Information Update

FDA has authorized extended expiration dates for these lots to reflect the 12-month product shelf-life (see Table 1 below), when stored according to the storage conditions detailed in the [Fact Sheet for Healthcare Providers: Emergency Use Authorization for Paxlovid](#)

**Table 1: Extended Expiry Dating for Paxlovid (nirmatrelvir tablets and ritonavir tablets co-packaged for oral use) Authorized under EUA 105**

Lot #	Extended Expiry Date
FL4516 FL4517 FR7229	The initial 3 lots were extended from 7/31 to 10/31/22.
FR9088	4th lot was extended from 8/31 to 11/30/22

## Clinical updates

### EVUSHELD Spotlight

EVUSHELD Remains Readily Available for Use!

- ASPR has partnered with AstraZeneca to establish an additional pathway for providers to access EVUSHELD for use with eligible patients. Individual providers and smaller sites of care that **DO NOT CURRENTLY** receive EVUSHELD through the **HHS Health Partner Order Portal (or HPOp)** distribution process can now order small, limited quantities of product (1-3 patient courses) directly from the manufacturer, AstraZeneca, through Evusheld’s sole distributor, AmerisourceBergen.

- Providers/Sites **WITH** an HPoP account/receiving product via HPoP should continue to order through HPoP.
- AstraZeneca established a helpline to receive general EVUSHELD product information as well as guidance for ordering. Please contact the EVUSHELD Helpline at 1-833-EVUSHLD (1-833-388-7453) to learn more.

EVUSHELD is available at some Federal Pharmacy Partner locations, see table below:

Pharmacy Partner	Including:
Albertsons	Alberstons, Acme, Jewel-Osco, Pavilions, Randalls, Safeway, Start Market, Vons CPESN
Hy-Vee	Amber Specialty Pharmacy
Managed Healthcare Associates (MHA)	Thrifty White

**EVUSHELD Lot #AZ2200491 Expires 8/31/2022**

EVUSHELD Lot #AZ2200491 (also referred to as **Lot 12**) continues to have an expiration date of August 31, 2022. If your facility has any EVUSHELD on site that is this lot/expiration, we advise that your providers administer these doses first in order to use it before it expires and prevent wastage.

**EVUSHELD Dosing**

The AstraZeneca Call Center remains available should you have questions regarding the updated dosing guidance and/or the shelf-life extension for EVUSHELD. The AstraZeneca Call Center can be reached at 1-800-236-9933.

Allocation data

**Total Allocations to Therapeutic Administration Sites (07/21/2022 - 08/04/2022):**

Therapeutic (mAB & OAV*)	Central	Eastern	Northern	Northwest	Southwest	Total
<b>Bebtelovimab</b>	270	185	285	225	285	<b>1250</b>
<b>Evusheld</b>	192	216	528	96	48	<b>1080</b>
<b>Lagevrio (Molnupiravir)</b>	24	24	0	0	72	<b>120</b>
<b>Paxlovid</b>	20	320	1500	200	420	<b>2460</b>
<b>Renal Paxlovid</b>	15	45	95	5	115	<b>275</b>

\*Oral Antiviral numbers presented do not include those allocated to Community Pharmacy Enhanced Services Network. These Oral Antiviral courses were bulk ordered and distribution to individual site locations is managed by respective Federal Retail Pharmacy Therapeutic Program (FRPTP) partners, VDH does not have visibility of course distribution to each region.

\*Please reference the Outpatient Therapeutic Portfolio- Jurisdiction Allocations for more detail.

## Redistribution

VDH can redistribute therapeutics within our Commonwealth. Any providers wishing to make their therapeutics available for transfer can do so by clicking the link “Redistribute Excess Therapeutics” on the [VDH home page](#). The VDH Therapeutics team will prioritize these available therapeutics before pulling from federal supplies whenever it is advantageous to do so.

Listen to the Redistribution webinar [here](#). The Redistribution discussion starts at 8:55.

---

## Resources and Tools

### Monkeypox

The CDC and VDH are closely tracking the Monkeypox outbreak. For further information and guidance please see [Treatment of Monkeypox: Information for Virginia Healthcare Providers](#).

August 9 Webinar: *What Healthcare Professionals Need to Know About Monkeypox*: Register [here](#).

### Link to Sign Up for the Newsletter:

Did your colleague share this newsletter with you, and you'd like to sign up to receive it directly? Do you know of a colleague that would benefit from receiving information on therapeutics from VDH? Click [here to sign up!](#)

### VDH Therapeutics Website for Healthcare Providers

Check out the VDH Therapeutics webpage [here](#). Reach out to [COVID19Therapeutics@vdh.virginia.gov](mailto:COVID19Therapeutics@vdh.virginia.gov) for questions, comments, or feedback on information you'd like to see.

### COVID-19 Therapeutics Webinars and Open Forum Calls for Providers

- VDH is continuing to facilitate webinars and open forums monthly. See below for links to **register!**

August 10 COVID-19 Therapeutics Healthcare Provider Webinar: Register [here](#).

August 24 COVID-19 Therapeutics Healthcare Provider Forum featuring INOVA Health System: Register [here](#).

Other resource links:

[VDH: COVID-19 Therapeutics FAQs for Providers](#)

[VDH: Guidance on Expiring & Expired Therapeutics](#)

[VDH: EVUSHELD Fact Sheet for Providers](#)

[VDH: Lagevrio \(Molnupiravir\) Prescribing Checklist](#)

[VDH: Paxlovid Prescribing Checklist](#)

[VDH: Paxlovid Prescribing Checklist- Pharmacists](#)

[HHS: ASPR Test to Treat Fact Sheet](#)

Find where to access therapeutics [here](#).

---