
Virginia COVID-19 Regional Data Update

August 17, 2022



**VIRGINIA'S
HEALTH
IS IN OUR
HANDS.**

Do your part,
stop the spread.

National Trends

- The United States case rate per 100,000 population in the last 7 days has **decreased** to **206** (-14.5%)
- National new hospitalizations of confirmed COVID-19 cases in the last 7 days have **decreased** to **5,837** (-4.3%)
- The national 7-day moving average of daily deaths **decreased** to **415** (-5.1%)

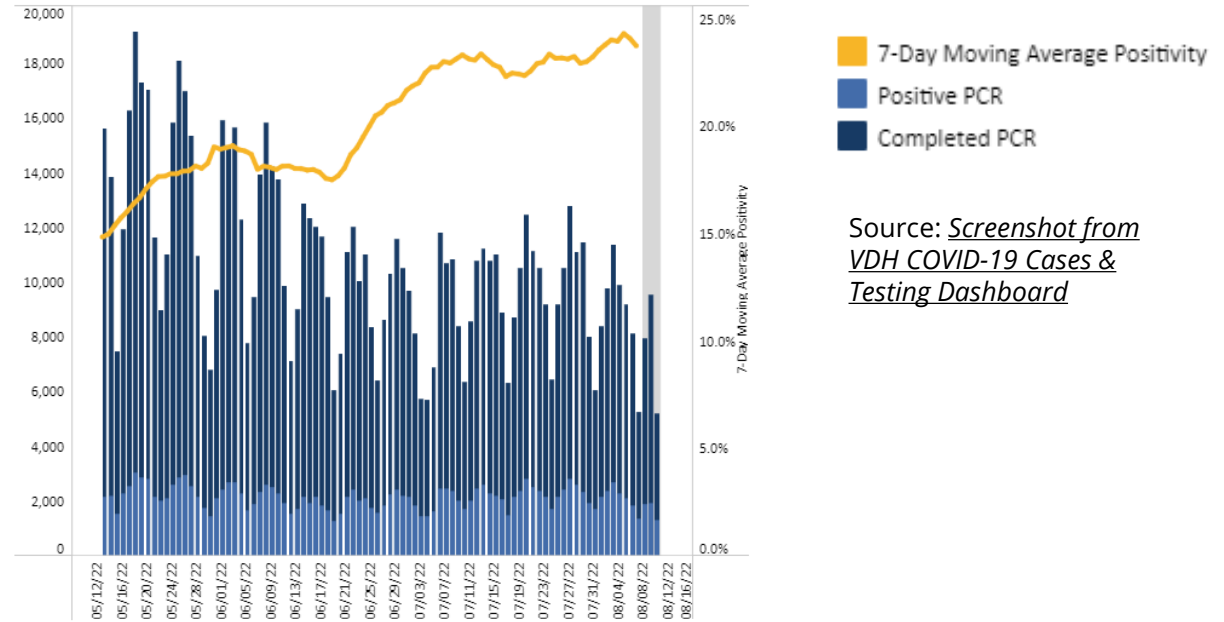
Virginia Trends

- **Case rate per 100,000** population in the last 7 days is **30.5** (-7.3%)
- **Cases by Date Reported decreased** to **2,621 (7-day MA) per day** (-7.4%)
- **Hospitalizations decreased** to **781 per day** (-1.9%)
- **Daily new deaths increased to 20** (7-day MA)
- As of **8/7/2022**, approximately **8,821 PCR tests were conducted per day** (7-Day MA), a **10.3% decrease** from 9,837 tests per day during the previous week
- **As of 8/7/22, the 7-day PCR positivity rate is 23.8%**, which represents an increase (+0.6%) to the positivity rate of 23.2 % last week
- Approximately **69% of Virginia localities** have a positivity rate **above 20%**, for the 7-day period from 7/31-8/6
- Approximately **28% of Virginia localities** have a positivity rate **above 30%**, for the 7-day period from 7/31-8/6

PCR Testing Encounters

As of 8/7/2022, approximately **8,821 PCR tests were conducted per day** (7-Day MA), a **10.3% decrease** from 9,837 tests per day during the previous week.

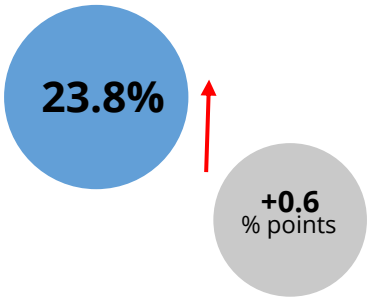
PCR Number of Testing Encounters, Number of Positive Testing Encounters, and Percent Positivity



Source: *Screenshot from VDH COVID-19 Cases & Testing Dashboard*

PCR Test Positivity Rate

PCR Positivity Rate (7-Day MA)



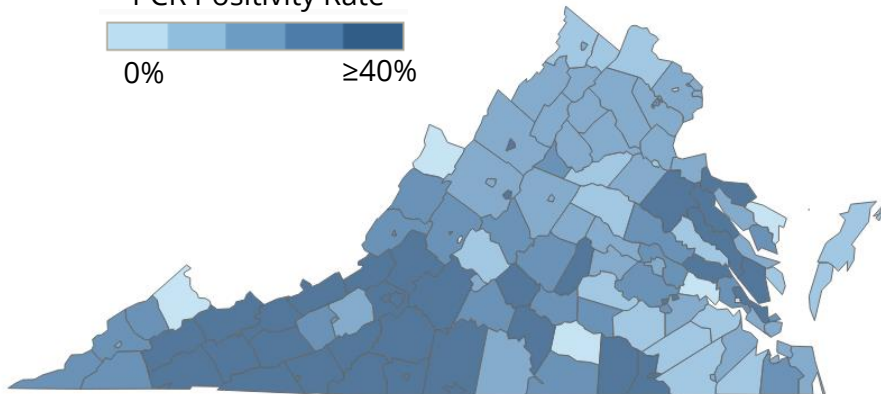
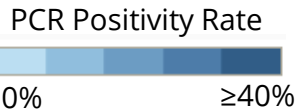
For the week 7/31-8/6/2022:

41% of Virginia localities had a **20 - 29% positivity rate.**

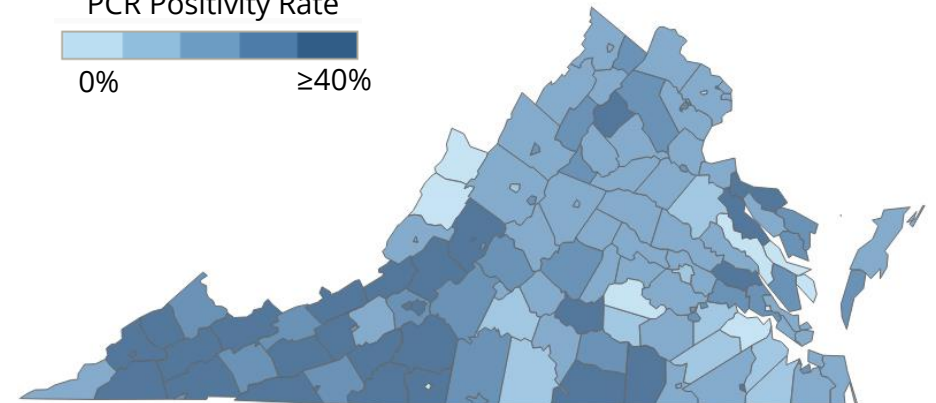
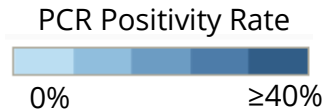
17% of localities had a **30 - 39% positivity rate.**

11% of localities had a **≥ 40% positivity rate.**

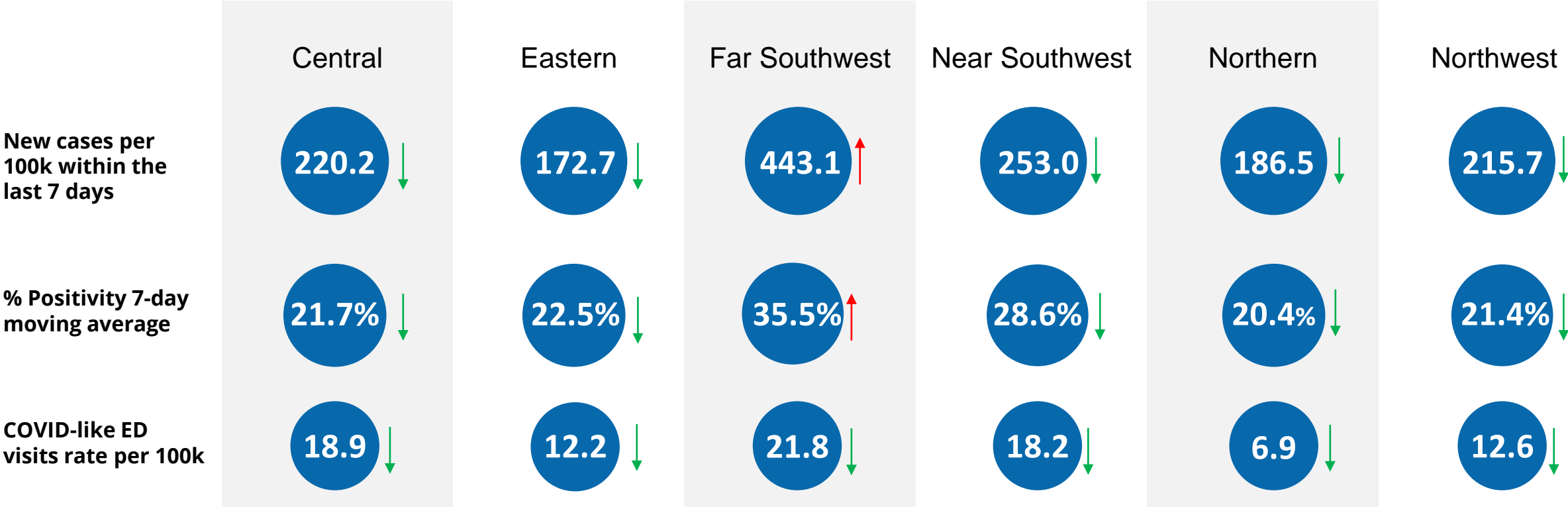
Previous Week
7/24/2022 - 7/30/2022



Current Week
7/31/2022 - 8/6/2022



Metrics date: 8/15/2022



Burden	Level 0	Level 1	Level 2	Level 3	Level 4
New Cases	<10	10-49		50-100	>100
% Positivity	<3	3-5	5-8	8-10	>10
CLI ED Visits	<4		4-5.9		≥6

Symbol	Trend
↑	Increasing
↓	Decreasing
○	Fluctuating

Regional Metrics

- Regional metrics indicate that new cases, percent positivity, and COVID-like ED visits are at the highest burden level across all regions:
 - **New cases per 100K are increasing in 1 region** (Far Southwest) **and decreasing in 5 regions** (Central, Eastern, Near Southwest, and Northern): Cases range from 215.7 cases per 100K in the Northwest region to a high of 443.1 cases per 100K in the Far Southwest region.
 - **% positivity is increasing in 1 region** (Far Southwest) All regions are above a 20% positivity rate and 2 regions are above a 25% positivity rate (Far Southwest, Near Southwest).
 - **COVID-like ED visits are decreasing in all 6 regions** (Central, Eastern, Far Southwest, Near Southwest, Northern, and Northwest): Visits range from 7 per 100K in the Northern region to 22 per 100K in the Far Southwest.

Virginia

- Virginia's reported **cases in the last 7 days** are at **30.5 (-7.3%)** per 100K while national cases are at **206 (-14.5%)** per 100K
- **Hospitalizations decreased to 781 per day (-1.9%)**
- **Daily new deaths increased to 20** (7-day MA)
- Approximately **69% of Virginia localities** have a positivity rate **above 20%**, for the 7-day period from 7/31-8/6
- Approximately **28% of Virginia localities** have a positivity rate **above 30%**, for the 7-day period from 7/31-8/6