
Virginia COVID-19 Regional Data Update

August 3, 2022



**VIRGINIA'S
HEALTH
IS IN OUR
HANDS.**

Do your part,
stop the spread.

National Trends

- The United States case rate per 100,000 population in the last 7 days has **decreased** to **240** (-10.8%)
- National new hospitalizations of confirmed COVID-19 cases in the last 7 days have **decreased** to **5,877** (-7.9%)
- The national 7-day moving average of daily deaths **decreased** to **357** (-14.0%)

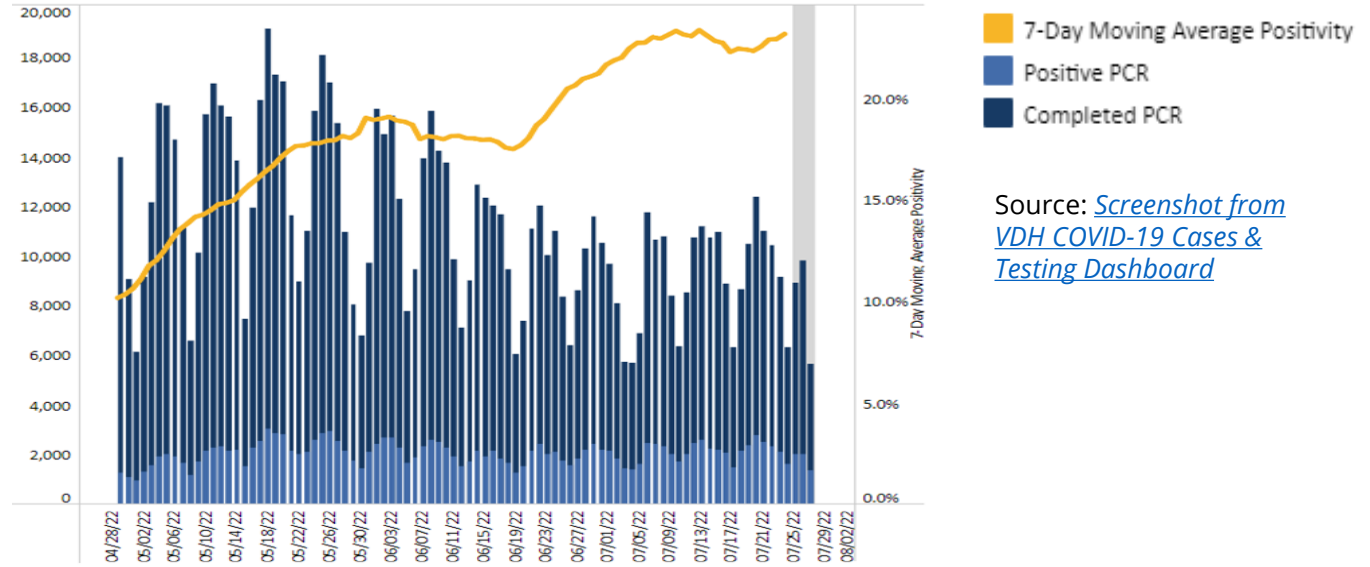
Virginia Trends

- **Case rate per 100,000** population in the last 7 days is **250** (0%)
- **Cases by Date Reported decreased** to **3,007 (7-day MA) per day** (-0.8%)
- **Hospitalizations increased** to **770 per day** (+7.1%)
- **Daily new deaths increased to 13** (7-day MA)
- As of 7/24/2022, approximately **9,740 PCR tests were conducted per day** (7-Day MA), a **1.6% increase** from 9,582 tests per day during the previous week
- **As of 7/24/22, the 7-day PCR positivity rate is 23.3%**, which represents an increase (+1.1%) to the positivity rate of 22.2 % last week
- Approximately **72% of Virginia localities** have a positivity rate **above 20%**, for the 7-day period from 7/17-7/23
- Approximately **21% of Virginia localities** have a positivity rate **above 30%**, for the 7-day period from 7/17-7/23

PCR Testing Encounters

As of 7/24/2022, approximately **9,740 PCR tests were conducted per day** (7-Day MA), a **1.6% increase** from 9,582 tests per day during the previous week.

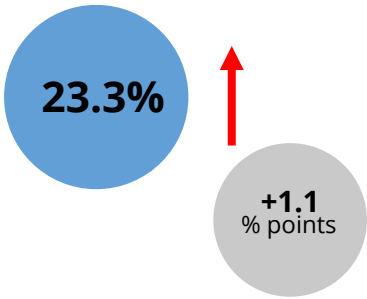
PCR Number of Testing Encounters, Number of Positive Testing Encounters, and Percent Positivity



Source: [Screenshot from VDH COVID-19 Cases & Testing Dashboard](#)

PCR Test Positivity Rate

PCR Positivity Rate (7-Day MA)

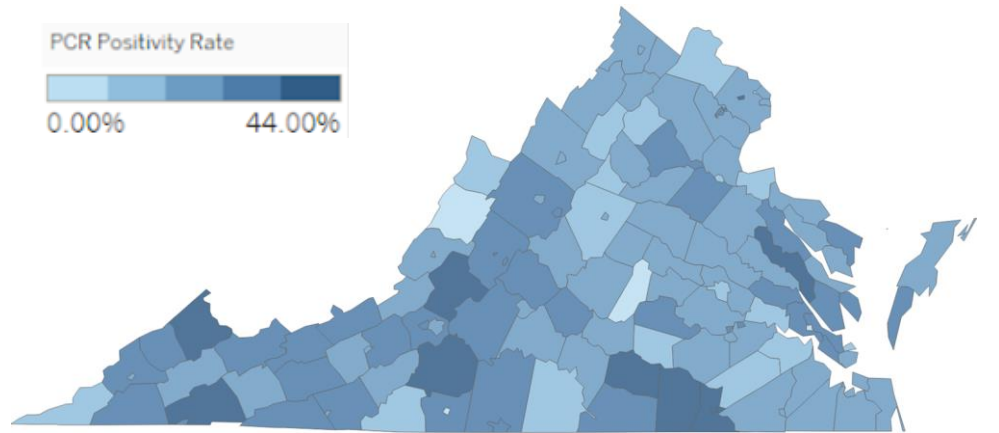
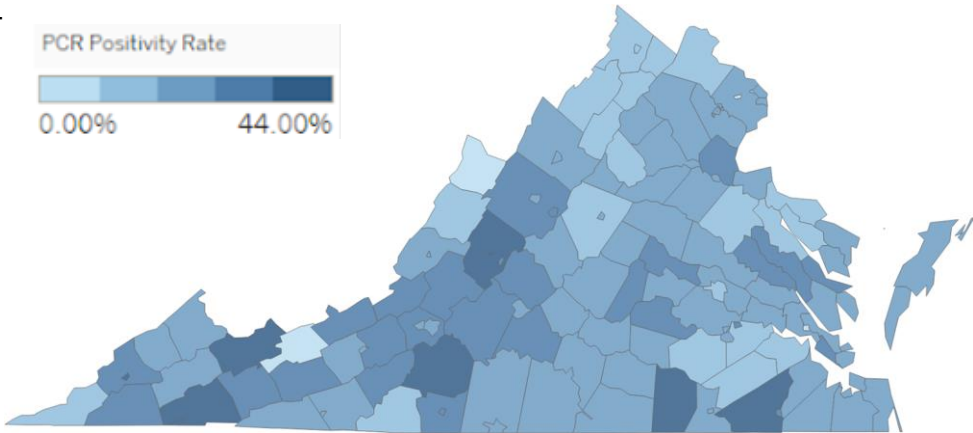


Previous Week
7/10/2022 - 7/16/2022

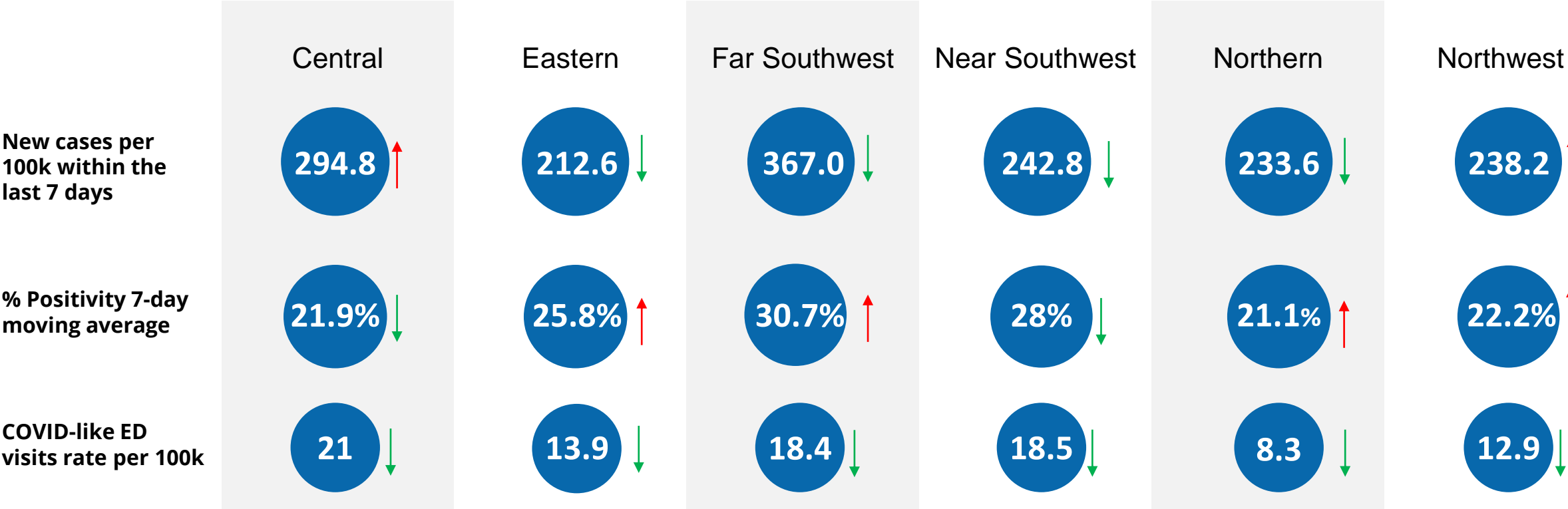
Current Week
7/17/2022 - 7/23/2022

For the week 7/17/2022 - 7/23/2022, **72% (+4% point)** of Virginia localities surpassed a **20% positivity rate**.

This includes the **21% (+10% points)** of Virginia localities that surpassed a **30% positivity rate**.



Metrics date: 7/31/2022



Burden	Level 0	Level 1	Level 2	Level 3	Level 4
New Cases	<10	10-49		50-100	>100
% Positivity	<3	3-5	5-8	8-10	>10
CLI ED Visits	<4		4-5.9		≥6

Symbol	Trend
↑	Increasing
↓	Decreasing
○	Fluctuating

Regional Metrics

- Regional metrics indicate that new cases, percent positivity, and COVID-like ED visits are at the highest burden level across all regions:
 - **New cases per 100K are increasing in 2 regions** (Central, Northwest) **and decreasing in 4 regions** (Eastern, Far Southwest, Near Southwest, and Northern): Cases range from 213 cases per 100K in the Eastern region to a high of 367 cases per 100K in the Far Southwest region.
 - **% positivity is increasing in 4 regions** (Eastern, Far Southwest, Northern, Northwest): All regions are above a 20% positivity rate and 3 regions are above a 25% positivity rate (Eastern, Far Southwest, Near Southwest).
 - **COVID-like ED visits are decreasing in all 6 regions** (Central, Eastern, Far Southwest, Near Southwest, Northern, and Northwest): Visits range from 8 per 100K in the Northern region to 21 per 100K in the Central region.

Virginia

- Virginia's reported **cases in the last 7 days** are at **250 (0%)** per 100K while national cases are at **240 (-10.8%)** per 100K
- **Hospitalizations increased to 770 per day (+7.1%)**
- **Daily new deaths increased to 13 (7-day MA)**
- Approximately **72% of Virginia localities** have a positivity rate **above 20%**, for the 7-day period from 7/17-7/23
- Approximately **21% of Virginia localities** have a positivity rate **above 30%**, for the 7-day period from 7/17-7/23