

Do I need a COVID-19 additional primary dose or booster vaccine today?

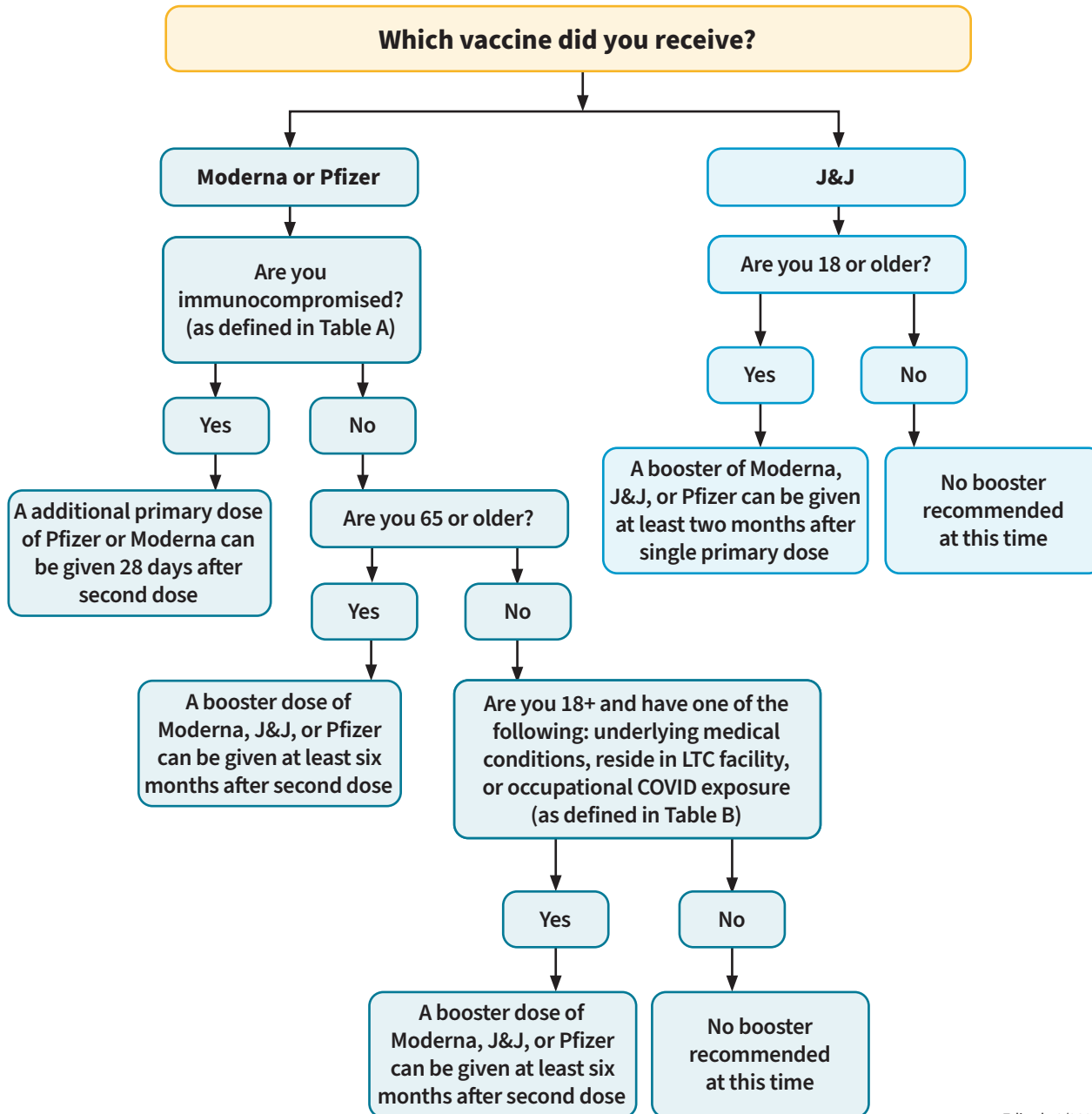


TABLE A:
Moderately – severely immunocompromised

- Undergoing cancer treatment
- Organ transplant recipient
- Stem cell transplant recipient ~2 years
- Taking medication to suppress immune system
- Moderate or severe primary immunodeficiency
- Advanced or untreated HIV infection
- Active treatment with high-dose corticosteroids

TABLE B:
Examples of workers who may get Pfizer/Moderna booster shots

- First responders (e.g., health care workers, firefighters, police, congregate care staff)
- Education staff (e.g., teachers, support staff, daycare workers)
- Food and agriculture workers
- Manufacturing workers
- Corrections workers
- U.S. Postal Service workers
- Public transit workers
- Grocery store workers