

Blue Ridge Health District

Annual Report

Fiscal Year 2022



Photograph provided by BRHD Staff Member Cindy Thompson



Table of Contents:

BRHD: Who We Are	1
Letter from the District Co-Directors	2
MAPP2Health Report	3
COVID-19 Response Efforts	4
Mobile Unit 'Mobi'	6
Clinical Services	7
Environmental Health Programs	8
Community Engagement & Public Information	9
Harm Reduction & Sexual Health	10
WIC & Epidemiology	11
Human Resources	12
Fiscal Information	13



Who We Are:

The Blue Health District (BRHD) is one of 35 health districts under the Virginia Department of Health (VDH). We are comprised of five health departments and one community-based clinic that serve the counties of Albemarle, Fluvanna, Greene, Louisa, and Nelson, along with the city of Charlottesville. Our local health departments provide public health services to over 250,000 residents.

Our Mission:

To protect and promote the health and well-being of all Virginians.

Our Vision:

Healthy people living in healthy communities.

BRHD Locations

Charlottesville/Albemarle Health Department

1138 Rose Hill Drive
Charlottesville, VA 22903
434-972-6200

Greene County Health Department

50 Stanard Street
Stanardsville, VA 22973
434-985-2262

Nelson County Health Department

4038 Thomas Nelson Hwy
Arrington, VA 22922
434-263-8315

Fluvanna County Health Department

132 Main Street
Palmyra, VA 22963
434-591-1960

Louisa County Health Department

Health Clinic Services
540 Industrial Drive
Louisa, VA 23093
540-967-3703

Environmental Health Services

1 Woolfolk Avenue
Louisa, VA 23093
540-967-3707

Yancey Community Center

7625 Porters Road
Esmont, VA 22937
434-270-3216



VDH VIRGINIA
DEPARTMENT
OF HEALTH
*To protect the health and promote the
well-being of all people in Virginia.*

Letter From The Co-Directors

Fiscal Year 2022 (July 2021 – June 2022) presented many new opportunities and challenges for the Blue Ridge Health District (BRHD). While much of our year was spent working on the COVID-19 response efforts, we reopened many clinical services and our environmental health programs grew compared to the year prior.

We started out FY22 with a surge in COVID-19 cases and the roll out of the first booster vaccines. We used our new mobile health unit 'MOBI' to host hundreds of community based vaccine clinics. The demand for COVID-19 testing around the winter holidays was higher than ever before. As we entered the spring, we reached the two year mark of the COVID-19 response. We hosted a press conference in March 2022, recognizing the two year anniversary, our accomplishments and challenges throughout the two years, and acknowledging the many lives lost to COVID-19 in our community. Late in the spring and early in the summer, we ended a few of our COVID-19 services, including universal contact tracing, wrap around care support services, and BRHD-hosted drive-through testing. While we ended some programs, other new, sustainable efforts began, including our Community Health Worker (CHW) program, which now includes a team of five CHWs, three of whom are Spanish speakers. Our role in the COVID-19 response is evolving as we enter a new era of pandemic response, and we are committed to ensuring equity and accessibility remain a priority in our service efforts.

At the end of FY22, the District experienced a change in leadership when Dr. Denise Bonds left the agency in June. We greatly appreciate the service Dr. Bonds has provided over the course of the last seven years, and wish her great success in her new endeavors!

Learn more about our past year of accomplishments in this FY22 Annual Report.



Lilian Peake, MD, MPH

Acting Co-Director, Blue Ridge Health District
State Epidemiologist and Director of the Office of Epidemiology
Virginia Department of Health



L. Trice Gravatte, IV, MD

Acting Co-Director, Blue Ridge Health District
Health Director, Rappahannock/Rapidan Health District
Virginia Department of Health

MAPP2Health Report

The Blue Ridge Health District (BRHD) 2022 MAPP2Health report is now posted on the [BRHD website](#)! MAPP2Health is the local name for the Community Health Needs Assessment (CHNA) that incorporates a MAPP (Mobilizing for Action Through Planning and Partnerships) process to produce a final report. Every three years we conduct an assessment with the help of community partners and report out their findings. This year's report was conducted in partnership with UVA Health, Sentara Martha Jefferson Hospital, and Sentara Martha Jefferson Outpatient Surgery Center. We engaged **over 130 representatives** from the District's communities, government agencies, health systems, clinical care offices, and non-profit organizations. Participants explored the policies and practices that influence health from two focus areas: built environment and healthcare systems. They specifically developed targeted recommendations to combat health disparities with improvements in transportation, digital access and literacy, healthcare access, and mental healthcare access.



Why a MAPP2Health?

Many Health Departments and non-profit hospitals must conduct a needs assessment as mandated by local or federal government requirements. BRHD participates in order to learn about our District's health needs and issues. That way we can customize our services and plan to meet those needs.

What's the MAPP2Health Process Like?

The MAPP2Health Core Group – representatives from BRHD, UVA Health and Sentara Martha Jefferson Hospital – met weekly to plan larger group meetings with district wide agencies, organizations and community members. This year, participants were divided into two main groups: The Leadership Council and The Locality Council. The Leadership Council was made up of local government officials, agency leads, and policymakers who had policy or practice influence in two or more localities in the District. The Locality Council was made of organizations, agencies, and individuals who lived in, worked, or served clients in at least one locality in the district. Meetings were held on Zoom every other month and as a group, each Council determined its focus areas and health needs to focus on for their communities.

What's Next?

The next step is to put the recommendations for improvements in the focus areas and policy targets into action. This is known as a Community Health Improvement Plan (CHIP), and the process of identifying partners to create and execute that plan has begun. Ideally, the CHIP will be completed late this fall and the partners involved will commit to contributing to the CHIP's objectives and goals for the next three years.

COVID-19 Response

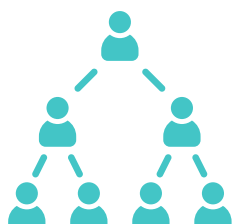
Since the first COVID-19 case was identified in the Blue Ridge Health District in March of 2020, our pandemic response efforts have been running full force to keep up with the ever-changing landscape. Our COVID-19 teams have worked tirelessly to adapt to the frequent changes in guidance and general knowledge about the SARS-COV-2 virus. In FY22, BRHD vaccinated thousands of community members and completed hundreds of outbreak investigations.

Containment

In line with CDC guidance, BRHD shifted away from universal contact tracing in February 2022 to focus on case investigations and mitigating outbreaks in congregate care settings, preK - 12 schools, and businesses within our District.

143 COVID-19 Outbreaks Closed

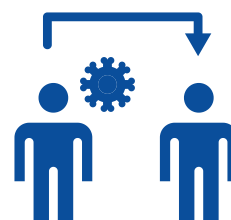
Albemarle	90
Charlottesville	22
Fluvanna	8
Greene	9
Louisa	10
Nelson	4



36,079 COVID-19 Cases Investigated

1 case = 1-20 close contacts

Charlottesville/Albemarle	21,972
Fluvanna	3,866
Greene	3,028
Louisa	5,279
Nelson	1,934



"As a Public Health Investigator [PHI], case investigation is what I do every day to help individuals and organizations manage the stress of COVID-19. It makes me a better person and I'm truly proud to be of service to our community."

- Davina Jackson, Business & Industry PHI

Testing

Since April 2020, BRHD has hosted weekly free drive-through COVID-19 PCR testing clinics throughout the District. With at-home and other tests now readily available, BRHD stopped offering community drive-through testing events in June 2022. Throughout the two years of testing clinics, BRHD administered over 25,100 free COVID-19 PCR tests. Of that total, 16,424 tests were conducted in FY22 alone.

16,424 PCR Tests Performed by BRHD

Charlottesville/Albemarle	13,674
Fluvanna	759
Greene	904
Louisa	615
Nelson	472



COVID-19 Response Cont.

Wraparound Response

The COVID-19 Care Support Services provided resources to community members needing assistance while in isolation due to a COVID-19 diagnosis. This program started in 2020 and ended in April 2022. In FY22, over 700 adults and 500 children were served. The program was able to assist with delivery of basic necessities such as food, water, infant care supplies, cleaning supplies, and PPE.



Over 700 adults & 500 children received Wraparound Services from our COVID-19 Care Support Services, which included:

- PPE + cleaning supplies
- Food + water
- Infant care supplies

Vaccinations

In FY22, BRHD transitioned from operating large mass vaccination sites to smaller clinics that offer more flexibility and access to the community. One of our greatest tools is the BRHD Mobile Unit, or 'Mobi'. Another key aspect of the vaccination response has been our Homebound Program. By partnering with UVA Health and the Charlottesville Fire Department, we have been able to provide at-home COVID-19 vaccination services free of charge to individuals and families without the resources and ability to leave their home to access this care.

73,262 COVID-19 Vaccines Administered

Community Vaccination Center (CVC)	44,823
Blue Ridge Health District (BRHD)	27,270

**Vaccines Administered
via Homebound Services**

1,169

683 Vaccination Clinics Hosted

Charlottesville/Albemarle	408
Fluvanna	70
Greene	57
Louisa	84
Nelson	64



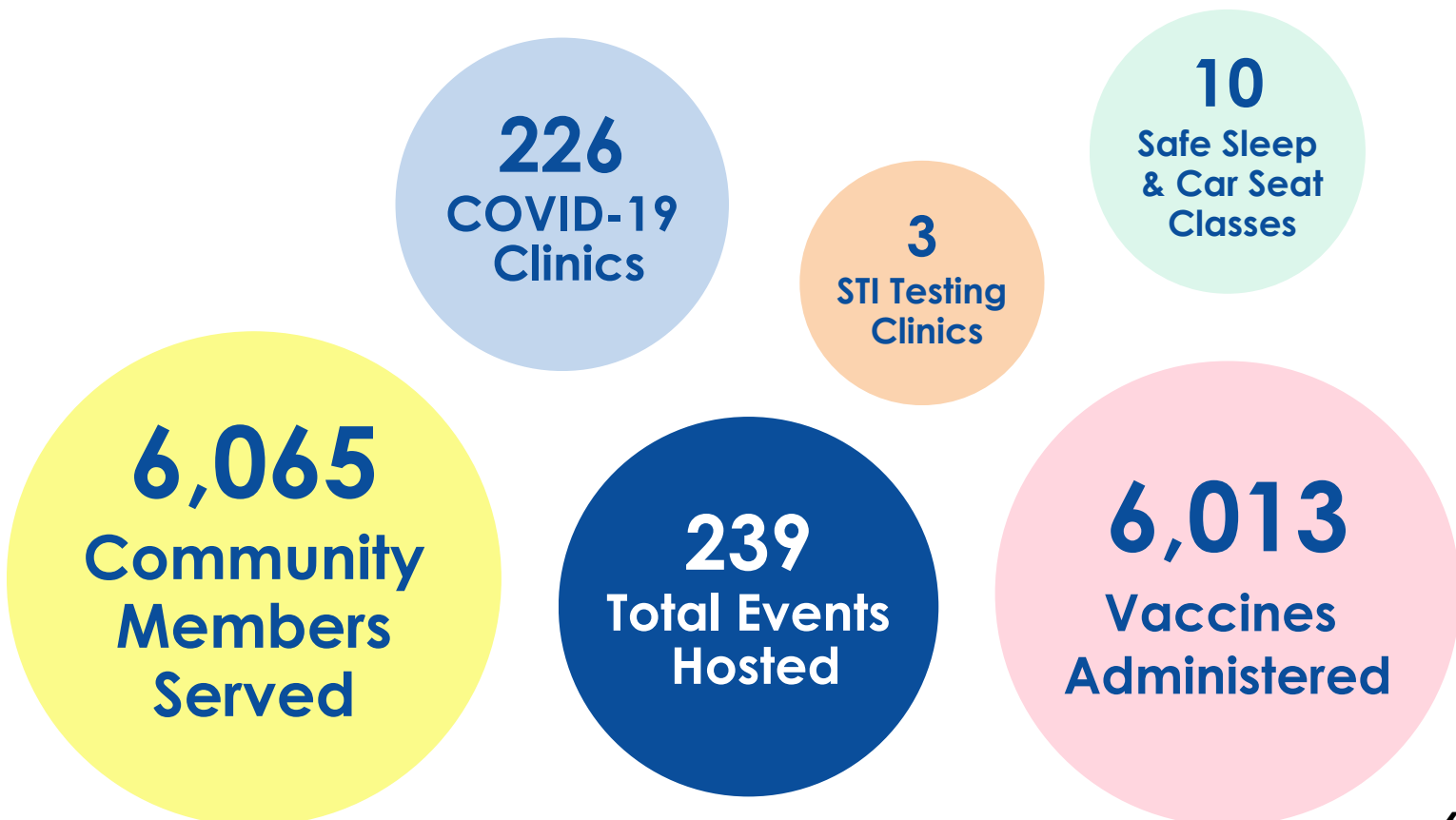
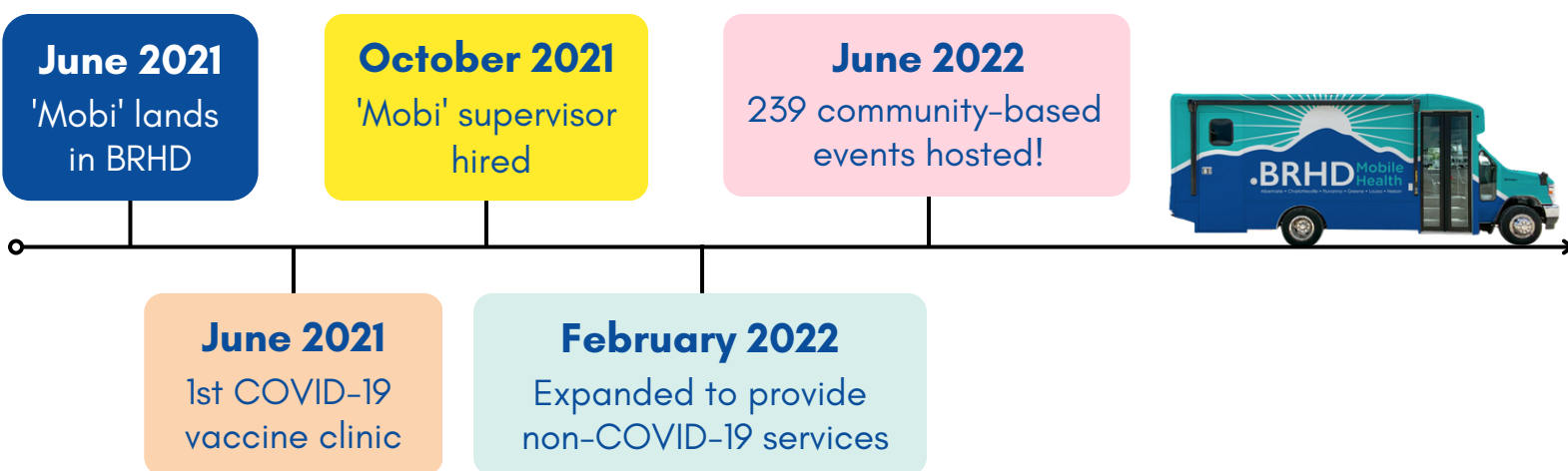
**Vaccines Administered
on our Mobile Unit, 'Mobi'**

6,013



BRHD Mobile Unit, AKA 'Mobi'

Since welcoming home BRHD's new Mobile Health Unit in June of 2021, the Mobi Team has hosted **239** community-based events! In February of 2022, 'Mobi' began expanding to provide non-COVID-19 services, including free sexually transmitted infection (STI) testing, portable cribs, car seats, and back to school immunizations. In the future, we'd like to see 'Mobi' used for additional programs like comprehensive harm reduction, Women Infant and Children (WIC) services, and much more! Our thanks goes to the Genan Foundation, an anonymous donor, and our partnership with the County of Albemarle for funding the unit.



Clinical Services

Services include, but are not limited to, pre-admission screenings for long-term care services and family planning, which includes birth control and pregnancy and STI screenings. Tuberculosis (TB) screenings and treatment continue to be provided. In addition to the COVID-19 specific vaccines, immunizations for school, travel, and general health needs are available.

4,022 Immunization Visits (Non COVID-19)

Charlottesville/Albemarle	2,147
Fluvanna	186
Greene	970
Louisa	584
Nelson	135



1,624 Immunization Clients (Non COVID-19)

545 Pre-Admission Screenings (for long term services & support)

Charlottesville/Albemarle	248
Fluvanna	80
Greene	52
Louisa	131
Nelson	34



3,412 Family Planning Visits

Charlottesville/Albemarle	1,274
Fluvanna	110
Greene	773
Louisa	757
Nelson	498



316 Family Planning Clients

447 Tuberculosis (TB) Screenings + Visits

Charlottesville/Albemarle	178
Fluvanna	38
Greene	92
Louisa	138
Nelson	1



Environmental Health

BRHD Environmental Health includes Food Protection, Onsite Sewage Disposal/Water, and General Environmental Health programs. Staff provide education to the public and agencies to protect and promote the health of the community, all while ensuring safety by enforcing regulations and laws. The Vital Records Office records deaths and issues death, birth, marriage, and divorce certificates.

1,587 Sewage Disposal System Applications Received

Albemarle	685
Charlottesville	5
Fluvanna	135
Greene	161
Louisa	450
Nelson	151



882 Food Service Establishment Inspections

Albemarle	317
Charlottesville	305
Fluvanna	30
Greene	54
Louisa	128
Nelson	48



536 Rabies Cases Investigated

Albemarle	347
Charlottesville	33
Fluvanna	21
Greene	39
Louisa	51
Nelson	45
No Locality	0



18,696 Vital Records Issued

(including duplicate copies)

Albemarle	8,175
Charlottesville	4,293
Fluvanna	1,679
Greene	978
Louisa	2,198
Nelson	1,373



46 Temporary Event Vendors Permitted

Albemarle	8
Charlottesville	9
Fluvanna	5
Greene	6
Louisa	6
Nelson	12



Community Engagement

Maternal Child Health

Between the spring and summer of FY22, Maternal Child Health (MCH) teamed up with the BRHD Mobile Unit to distribute 19 free cribs and 23 free car seats! By working with International Neighbors, most of the car seats went to new Afghani emigres recently settled in the city of Charlottesville. MCH also hosted a virtual four-part "Birth and Baby Talks" series earlier in the spring designed to prepare expectant parents for the physical and emotional stages of labor, birth, and postpartum, as well as providing local resources. More than 40 soon-to-be parents participated in the series and our hope is to see even more attendees again this fall!

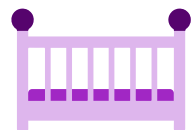


More than **40** expectant parents participated in the four-part "Birth & Baby Talks Virtual Series"

38 Free Car Seats



25 Free Cribs



Distributed in FY22



Community Health Workers

In FY21, BRHD received Cycle 4 COVID-19 funds and a Rural Health Disparities grant to hire a team of five Community Health Workers (CHWs). This is the largest team of CHWs that the District has ever had. The CHWs conduct community outreach (door-to-door, health fairs, hotline calls), collaborate with local partners to share public health information, and connect community members with resources.

Communications

BRHD's Communications Team grew throughout COVID-19 response to meet the need for increased communication. The team shared hundreds of posts on social media, hosted nearly half a dozen town halls, and presented at numerous community meetings. The team also ramped up BRHD's digital media presence by sending 60 newsletters and designing over 200 graphics over the course of FY22.



Over **200** Graphics Created

60 Newsletters

published & sent via email



Narcan + Harm Reduction

281 Boxes of Narcan Nasal Spray Distributed

Charlottesville/Albemarle	266
Fluvanna	0
Greene	10
Louisa	2
Nelson	3



Harm reduction programs aim to reduce negative impacts associated with drug use through public health intervention. BRHD provides Naloxone (Narcan) free of charge to community members, first responders, and local organizations to prevent fatal opioid overdoses in our district. In an effort to make Narcan more accessible to all, BRHD provides monthly drive-thru and walk-up Narcan distribution events. During these events, participants receive Rapid Revive training on how to recognize and respond to an opioid overdose, in addition to

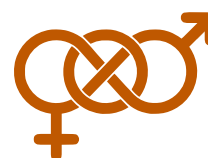
instructions on how to administer Narcan. Each participant leaves with a box of Narcan and safety kit that provides protection to them during an opioid response emergency.

Sexual Health Services

Sexual health clinics offer testing for a variety of sexually transmitted infections (STIs), as well as as appropriate follow up and education. At BRHD, our sexual health services team consistently strives to decrease the stigma associated with STI testing by hosting inclusive and discreet services. We also offer case management for HIV prevention medication (PrEP) to anyone at high risk of getting HIV.

2,627 Sexual Health Visits

Charlottesville/Albemarle	2,514
Fluvanna	2
Greene	25
Louisa	49
Nelson	37



351 Sexual Health Clients

141,586

Condoms Distributed



193 Rapid HIV + Hep C Tests Provided



Women, Infants, & Children (WIC)

At the end of March 2020, BRHD's WIC program paused in-person services to accommodate the COVID-19 pandemic. All of our regular programs and operations continue to be offered remotely by phone, including individual counseling appointments with a nutritionist, one-on-one nutrition education with staff, and breastfeeding consults. All WIC services and appointments will remain by phone through the beginning of 2023.

Despite the changes, clients continue to receive their WIC benefits as normal. In order to accommodate disruptions caused by COVID-19, changes to WIC benefits have included waivers to expand grocery stores' selections of eligible foods, as well as a temporary increase in cash value benefits for purchasing fruits and vegetables.

2,752 Average
Monthly Caseload



Charlottesville/Albemarle	1,554
Fluvanna	173
Greene	302
Louisa	422
Nelson	257
Southwood	44



The WIC program adjusted to the latest formula recall and shortages by allowing the purchase of many new brands, sizes, flavors, and types of formulas.

Epidemiology

BRHD investigates communicable disease reports from healthcare providers and labs to identify community health problems. When communicable disease outbreaks occur, BRHD works to determine the source and to stop the spread of disease through education, infection control measures, post-exposure prophylaxis recommendations, community surveillance, and immunization. BRHD also conducts surveillance in conjunction with the state by monitoring health data from emergency departments and urgent care centers.

1,116 Reported Disease
Cases Investigated

Albemarle	350
Charlottesville	468
Fluvanna	79
Greene	59
Louisa	104
Nelson	56



As was the case in FY21, tick-borne diseases and enteric (GI) conditions accounted for the majority of cases within the Blue Ridge Health District in FY22. Albemarle, Charlottesville, and Louisa accounted for the bulk of all reportable diseases in the district.

Human Resources (HR)



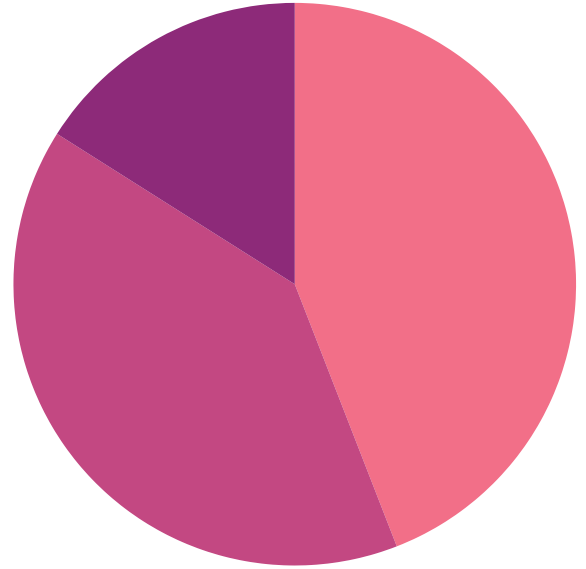
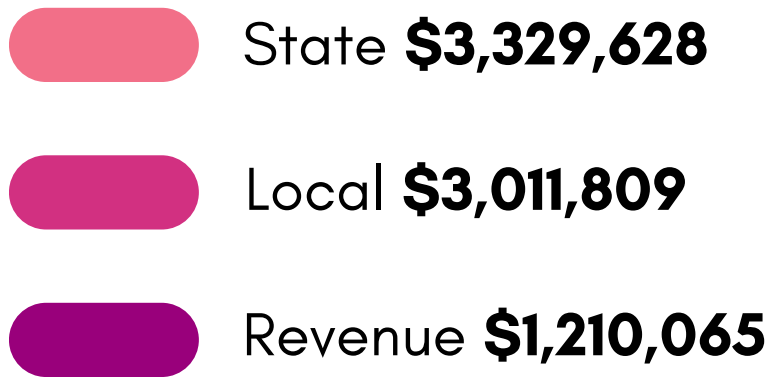
June 2021	
Full-Time	73
Wage	2
Contract (Non-COVID)	9
COVID Contractors	94
Total:	176



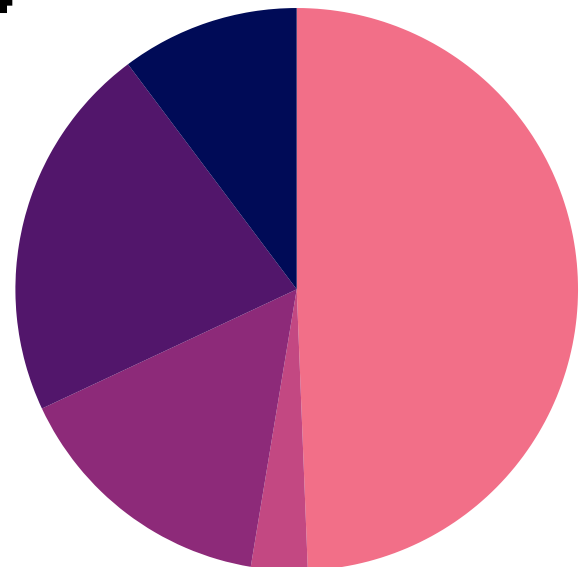
June 2022	
Full-Time	78
Wage	3
Contract (Non-COVID)	18
COVID Contractors	45
Total:	144

Fiscal Information

Funding:



Revenue:



Fiscal Information Cont.

Expenses:

- Personnel **\$4,989,238**
- Contractual Services **\$1,604,668**
- Supplies **\$419,612**
- Transfers Payments **\$9,212**
- Continuous Charges **\$622,645**
- Equipment **\$87,637**

