



# Annual Report

Fiscal Year 2023

## Blue Ridge Health District

Virginia Department of Health







# Table of Contents:

<b>BRHD: Who We Are</b>	<b>1</b>
<b>Letter from the District Management Team (DMT)</b>	<b>2</b>
<b>MAPP2Health Report: Community Health Improvement Plan</b>	<b>3</b>
<b>COVID-19 Response Efforts</b>	<b>4</b>
<b>Environmental Health Programs</b>	<b>5</b>
<b>Clinical Services</b>	<b>6</b>
<b>Population Health</b>	<b>7</b>
<b>Medical Reserve Corps (MRC) Response</b>	<b>9</b>
<b>Harm Reduction &amp; Sexual Health</b>	<b>10</b>
<b>WIC &amp; Epidemiology</b>	<b>11</b>
<b>Human Resources</b>	<b>12</b>
<b>Fiscal Information</b>	<b>13</b>





## Who We Are:

The Blue Ridge Health District (BRHD) is one of 35 health districts under the Virginia Department of Health (VDH). We are comprised of five health departments and one community-based clinic that serve the counties of Albemarle, Fluvanna, Greene, Louisa, and Nelson, along with the city of Charlottesville. Our local health departments provide public health services to over 250,000 residents.

## Our Mission:

To protect and promote the health and well-being of all Virginians.

## Our Vision:

Working together for healthy, equitable communities.

## BRHD Locations

### Charlottesville/Albemarle Health Department

1138 Rose Hill Drive  
Charlottesville, VA 22903  
434-972-6200

### Greene County Health Department

50 Stanard Street  
Stanardsville, VA 22973  
434-985-2262

### Nelson County Health Department

4038 Thomas Nelson Highway  
Arrington, VA 22922  
434-263-8315

### Fluvanna County Health Department

132 Main Street  
Palmyra, VA 22963  
434-591-1960

### Louisa County Health Department\*

101 Woolfolk Ave  
**Suite 202-** Clinical  
**Suite 203-** Environmental Health  
Louisa, VA 23093  
540-967-3703

*\*Please note: new address effective 12/1/2023.*

### Yancey Community Center

7625 Porters Road  
Esmont, VA 22937  
434-270-3216



## Letter From the District Management Team

Fiscal Year 2023 (July 2022 – June 2023) was a year of growth and challenges for the Blue Ridge Health District (BRHD). In January 2023, we transitioned our community-based COVID-19 response efforts to be a part of our routine operations. This means we cut down on offering community vaccination clinics and testing events and now provide these services through immunization clinics and rapid-test kit distribution. This transition allowed for the District to build upon services that were once impacted during peak COVID-19 response. A number of our programs grew over the past year, and you can read more about them in this fiscal year's Annual Report.

BRHD's District Management Team (DMT) is leading the District beyond the COVID-19 response into the new era of Public Health 3.0. VDH is conducting an ongoing hiring process for a permanent Health Director for BRHD.

## BRHD's District Management Team

### **Thomas Franck, MD, MPH**

Acting Director

### **Ryan McKay**

Director of Administration

### **Erin Callas**

Director of Clinical Services

### **John McClelland**

Director of Environmental Health

### **Kenneth Gordon**

Director of Epidemiology

### **Leanne Knox**

Emergency Manager

### **Kathryn Goodman**

Director of Communications & Population Health

# MAPP2Health Report:

## Community Health Improvement Plan

Since 2009, Blue Ridge Health District (BRHD) has completed five MAPP2Health community health assessments (CHA) and improvement plans (CHIP) in partnership with the other two Core Group members – UVA Health and Sentara Martha Jefferson Hospital – and over 100 community organizations. The Core Group has published the resulting five [MAPP2Health Reports](#), the most recent in 2022.

The [2022 MAPP2Health report](#) was published in September 2022 and BRHD began soliciting participants in mid December 2022 to develop the corresponding Community Health Improvement Plan (CHIP). The CHIP is facilitated and managed by BRHD's CHA/CHIP Program Officer and Data Analyst with support from the MAPP2Health Core Group. The [2023-2025 CHIP](#) launched publicly April 3, 2023.

The CHIP takes the policy targets identified in the MAPP2Health Report and unites organizations to identify and implement actionable objectives, as well as garner public support and encourage accountability. Our district's CHIP is updated every three years. CHIP progress will be tracked by the BRHD CHA/CHIP program officer until it's completion on December 31, 2025.

Follow the CHIP and its four policy targets – Transportation, Healthcare Workforce, Digital Access + Skills, and Mental + Behavioral Health – at [www.BlueRidgeHD.org](http://www.BlueRidgeHD.org).



# COVID-19 Response

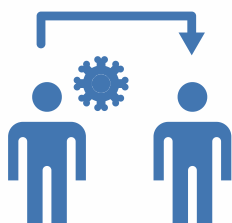
## Containment

After the COVID-19 containment team transitioned away from contact tracing in early 2022, efforts turned to case investigations, variant wellness checks, and Quality Assurance (QA). This resulted in the completion of many case investigations, significantly changing COVID-19 statistics for FY22 and FY23. In the final quarter of 2022, outbreak response focus shifted to congregate and school settings. This meant that the majority of the outbreaks we responded to originated within congregate care facilities and schools, including early childcare settings.

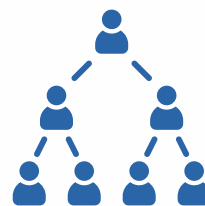
### 11,706 COVID-19 Cases Investigated

*1 case = 1-20 close contacts*

Charlottesville/Albemarle	7,330
Fluvanna	1,262
Greene	832
Louisa	1,702
Nelson	580



### 88 COVID-19 Outbreaks Closed

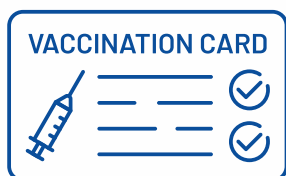


## Vaccinations

In December 2022, BRHD ended community-based COVID-19 vaccination efforts. During the first half of FY23, BRHD administered 136 during homebound vaccinations. In January 2023, BRHD transitioned to offer all COVID-19 vaccines during regularly scheduled immunization clinics.

### 14,157 COVID-19 Vaccines Administered

Charlottesville/Albemarle	10,251
Fluvanna	1,214
Greene	754
Louisa	728
Nelson	1,074



# Environmental Health

BRHD Environmental Health includes Food Protection, Onsite Sewage Disposal/Water, Vital Records, and General Environmental Health programs.

## 67 Temporary Event Vendors Permitted

Albemarle	6
Charlottesville	36
Fluvanna	8
Greene	10
Louisa	2
Nelson	5



## 1,403 Sewage Disposal System Applications

Albemarle	563
Charlottesville	25
Fluvanna	106
Greene	128
Louisa	437
Nelson	144



## 602 Rabies Cases Investigated

Albemarle	409
Charlottesville	16
Fluvanna	16
Greene	28
Louisa	63
Nelson	34
No Locality Given / Other	36



## 20,408 Vital Records Issued (including duplicate copies)

Albemarle/Charlottesville	14,624
Fluvanna	1,118
Greene	1,448
Louisa	1,956
Nelson	1,262



In FY23, the Food Protection team met and audited Standard 5 of the FDA Retail Program Standards. Standard 5 sets specific procedures for the District's response to foodborne illness outbreaks, including requirements related to 1). how quickly the district must initiate investigations, 2). coordination with other stakeholders, and 3). response activities once an outbreak is suspected or confirmed. The prompt response is crucial in identifying the source of contamination, preventing further illnesses, and protecting public health. Meeting Standard 5 and maintaining detailed records provides valuable data for continuous improvement.

## 579 Food Service Establishment Inspections

Albemarle	209
Charlottesville	212
Fluvanna	20
Greene	44
Louisa	71
Nelson	23





# Clinical Services

Services include, but are not limited to, pre-admission screenings for long-term care services and family planning, which includes birth control and pregnancy and STI screenings. Tuberculosis (TB) screenings and treatment continue to be provided. Immunizations for school, travel, and general health needs are available.

## 5,151 Immunization Visits (Non COVID-19)

Charlottesville/Albemarle  
Fluvanna  
Greene  
Louisa  
Nelson



3,164  
356  
1,091  
295  
245

## 1,811 Immunization Clients (Non COVID-19)

## 556 Pre-Admission Screenings (for long term services & support)

Albemarle  
Charlottesville  
Fluvanna  
Greene  
Louisa  
Nelson



160  
107  
81  
37  
136  
35

## 3,749 Family Planning Visits

Charlottesville/Albemarle  
Fluvanna  
Greene  
Louisa  
Nelson



2,112  
329  
623  
660  
25

## 424 Family Planning Clients

## 554 Tuberculosis (TB) Screenings + Visits

Charlottesville/Albemarle  
Fluvanna  
Greene  
Louisa  
Nelson



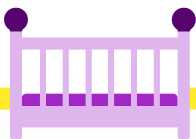
240  
71  
112  
127  
4



# Population Health

## Maternal Child Health

Continuing the positive trends from FY22, Maternal Child Health (MCH) has continued to build up the Low Income Safe Seat Education Program (LISSDEP) and Safe Sleep Program (SSP). In FY23 our MCH Coordinator teamed up with BRHD’s Community Health Workers (CHWs) to expand their reach by hosting multiple car seat & crib events in each of the District’s localities. With the addition of the CHW team, demand increased significantly across the board. In particular, their outreach work facilitated new connections with rural and Spanish-speaking communities that hadn’t participated before. To improve communication with new immigrant arrivals from Afghanistan, MCH collaborated with the International Refugee Committee (IRC) and UVA International Clinic to make contacting families shortly after their arrival more efficient. Thanks to these successful partnerships, free car/booster seat distribution increased by **370%** and free cribette distribution increased by **420%** compared to FY22!



**130** Cribettes Distributed  
via the Safe Sleep Program (SSP)

**179** Car & Booster Seats  
Distributed via the Low  
Income Safe Seat Education  
Program (LISSEP)

Albemarle/Charlottesville	95
Fluvanna	23
Greene	18
Louisa	27
Nelson	16



## Community Health Workers

BRHD’s Community Health Worker (CHW) program blossomed in FY23. The team consists of five CHWs, three of which are bilingual in English/Spanish. This is the largest team of CHWs that the District has ever had. The CHWs conduct community outreach (door-to-door, health fairs, hotline calls), collaborate with local partners to share public health information, connect community members with resources, and provide education on different health topics. In Spring of 2023, the CHWs began hosting office hours in every locality in the District. These Office Hours included providing information on available health department services, health resources, and referrals to community programs such as housing or food support.



**55+** Community  
Events Attended



**158+** Office Hours  
Hosted

# Population Health Cont.

## Communications

Over the course of FY23, BRHD's Communications Team began prioritizing digital accessibility and ADA compliance in our communication methods. Digital accessibility encompasses a wide variety of standards, so the team participated in multiple trainings designed to cover different areas.



To kick off our new efforts, BRHD updated the website code to ensure individuals using assistive technology, like screen readers, could navigate and use our webpages. Next, the team ensured all promotional materials (ex: flyers, social media graphics, etc) met the minimum color contrast ratio required for low vision and colorblind individuals to distinguish text and images. Another major accomplishment was integrating alternative text (alt text) into the bi-weekly public newsletters. Alt text allows the visually impaired to hear descriptions of photos via a screen reader device.

Over the next fiscal year, the primary goal is to integrate alt text into all PDFs available on the BRHD website, as well as social media.

**672 Social Media Posts**

on Facebook, Instagram, and X  
(formerly known as Twitter)



**60 Public Newsletters**

published & sent via email



**13 Articles Published in the Cville Daily Progress**

via online article & print newspaper



**Over 150 Graphics & Flyers Created**

# Population Health Cont.

## BRHD Mobile Unit, AKA 'Mobi'

BRHD used it's mobile health unit 'Mobi' in a variety of ways during FY23. During the first half of the year, Mobi was driving around the District providing COVID-19 vaccines in community-based settings. Mobi's efforts changed in January 2023 and shifted to be used primarily for population health education and maternal child health programs, distributing car seats, cribs, rapid at-home COVID-19 test kits, etc.



**82** Total Events Hosted  
**68** COVID-19 Vaccine Clinics Hosted

# Medical Reserve Corps

## MRC Response

In FY23, nine Medical Reserve Corps (MRC) volunteers received the Presidential Bronze Award for 100+ hours of volunteer service. In addition, one MRC volunteer received the Presidential Silver Award for 500+ hours of volunteer service.

**1,084** Hours Volunteered by MRC

Albemarle	60
Charlottesville	686.75
Fluvanna	115.25
Greene	28.5
Louisa	43.25
Nelson	150.25





# Harm Reduction

## 485 Boxes of Naloxone Nasal Spray Distributed

Charlottesville/Albemarle	377
Fluvanna	16
Greene	14
Louisa	55
Nelson	23



Harm reduction programs aim to reduce negative impacts associated with drug use through public health intervention. BRHD provides Narcan free of charge to community members, first responders, and local organizations to prevent fatal opioid overdoses in our district. In an effort to make Narcan more accessible to all, BRHD provides monthly drive-thru and walk-up Narcan distribution events. During these

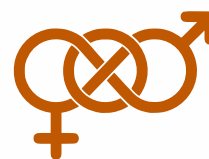
events, participants receive Rapid Revive training on how to recognize and respond to an opioid overdose, in addition to instructions on how to administer Narcan. Each participant leaves with a box of Narcan and safety kit that provides protection to them during an opioid response emergency. In FY23, BRHD assisted the HAVEN in developing their own Naloxone Partner Site and provided training for many school nurses across the district.

# Sexual Health Services

Sexual health clinics offer testing for a variety of sexually transmitted infections (STIs), as well as appropriate follow up and education. At BRHD, our sexual health services team consistently strives to decrease the stigma associated with STI testing by hosting inclusive and discreet services. We also offer case management for HIV prevention medication (PrEP) to anyone at high risk of getting HIV.

## 4,070 Sexual Health Visits

Charlottesville/Albemarle	3,775
Fluvanna	98
Greene	63
Louisa	109
Nelson	25



## 417 Sexual Health Clients

72,073

Condoms Distributed



172 Rapid HIV + Hep C Tests Provided



# Women, Infants, & Children (WIC)

WIC experienced an increase in clients in FY23. WIC programs and operations continued to be offered remotely by phone, including individual counseling appointments with a nutritionist, one-on-one nutrition education with staff, and breastfeeding consults. All WIC services and appointments will return in-person during FY24.



## 2,993 Average Monthly Client Caseload

Charlottesville/Albemarle	1,707
Fluvanna	207
Greene	330
Louisa	499
Nelson	250



# Epidemiology

BRHD investigates communicable disease reports from healthcare providers and labs to identify community health problems. When communicable disease outbreaks occur, BRHD works to determine the source and to stop the spread of disease through education, infection control measures, post-exposure prophylaxis recommendations, community surveillance, and immunization. BRHD also conducts surveillance in conjunction with the state by monitoring health data from emergency departments and urgent care centers. During FY23, Enteric events increased significantly. This may be due to several factors, including GI events attributed to multiple cases among students returning from international spring break trips plus the usual GI events. Invasive strep events and tickborne events declined significantly as well.

## 644 Reported Disease Cases Investigated

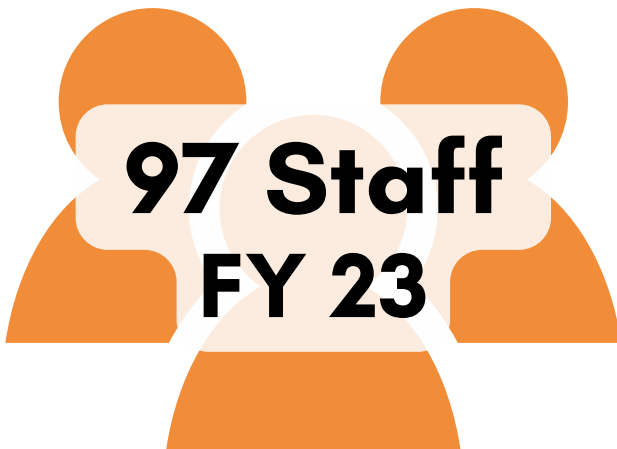
Albemarle	238
Charlottesville	137
Fluvanna	76
Greene	33
Louisa	102
Nelson	58



# Human Resources (HR)



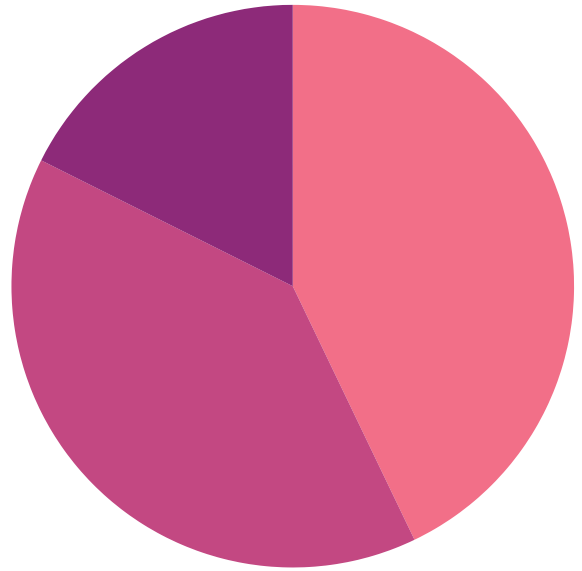
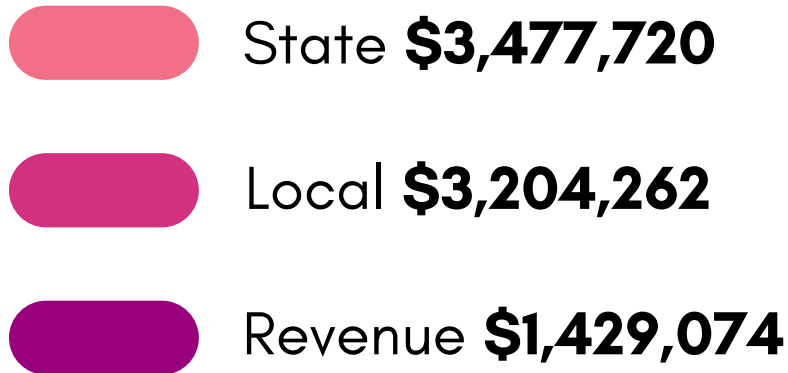
July 2022	
Full-Time	78
Wage	3
Contract (Non-COVID)	18
COVID Contractors	45
<b>Total:</b>	<b>144</b>



June 2023	
Full-Time	70
Wage	4
Contract (Non-COVID)	13
COVID Contractors	10
<b>Total:</b>	<b>97</b>

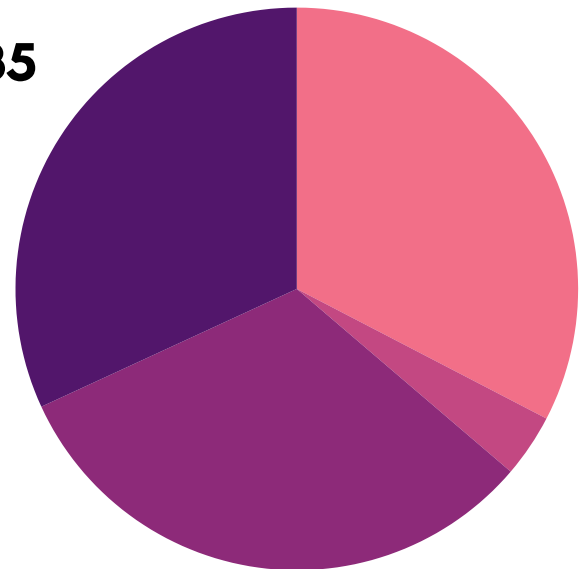
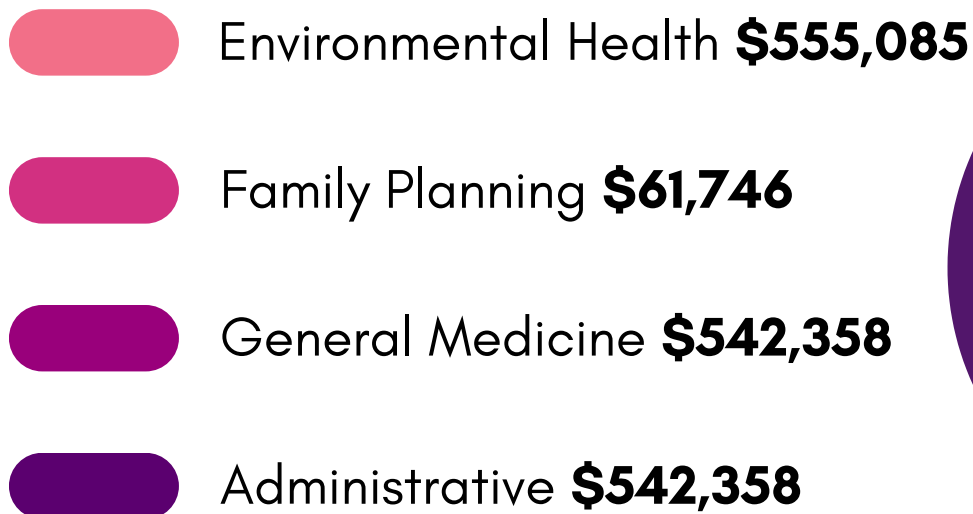
# Fiscal Information

## Funding:



**\$8,111,056 Total**

## Revenue:



**\$1,429,074 Total**



# Fiscal Information Cont.

## Expenses:

- Personnel **\$4,737,501**
- Contractual Services **\$2,678,464**
- Supplies **\$398,009**
- Continuous Charges **\$550,370**
- Equipment **\$58,787**
- Transfers Payments **\$8,313.06**

**\$8,431,444.06**

**Total**

