

MANUFACTURED BY:

B.M.C.I.
Code VA006

TWO-PIECE, ONE-COMPARTMENT SEPTIC TANK

Manufacturer's name, state serial number (if applicable), address (if applicable), and liquid capacity imprinted to the right of the knockout on the outlet end of tank.

LIQUID CAPACITY: 1,043 Gallons

LIQUID DEPTH: 48"

FREEBOARD: 12"

LENGTH TO WIDTH RATIO: 2.02 to 1

NUMBER OF INLETS: 3

NUMBER OF OUTLETS: 1

OUTLET MANHOLE: 18" minimum square clearance (with #3 rebar handle)
(Weight: 109 lbs.)

INLET MANHOLE: 18" minimum square clearance (with #3 rebar handle)
(Weight: 109 lbs.)

INLET TEE OR BAFFLE: TEE: Monolithically cast baffle tees with a 2" min.
wall thickness with a 4 1/2" x 4 1/2" open space in cross section extending 8" below
liquid level

OUTLET TEE OR BAFFLE: TEE: Monolithically cast baffle tees with a 2" min.
wall thickness with a 4 1/2" x 4 1/2" open space in cross section extending 17" below
liquid level

BAFFLE OR PARTITION WALL: N/A

CONCRETE: 3500 PSI minimum

REINFORCING: 6"x6"x10/10 wire mesh centered in all walls, ends, baffle
or partition wall, top and bottom

SEALANTS: 1" Butyl Rubber Mastic Sealant in tongue and groove jointline
between top and bottom half of tank (run continuous) or concrete grout

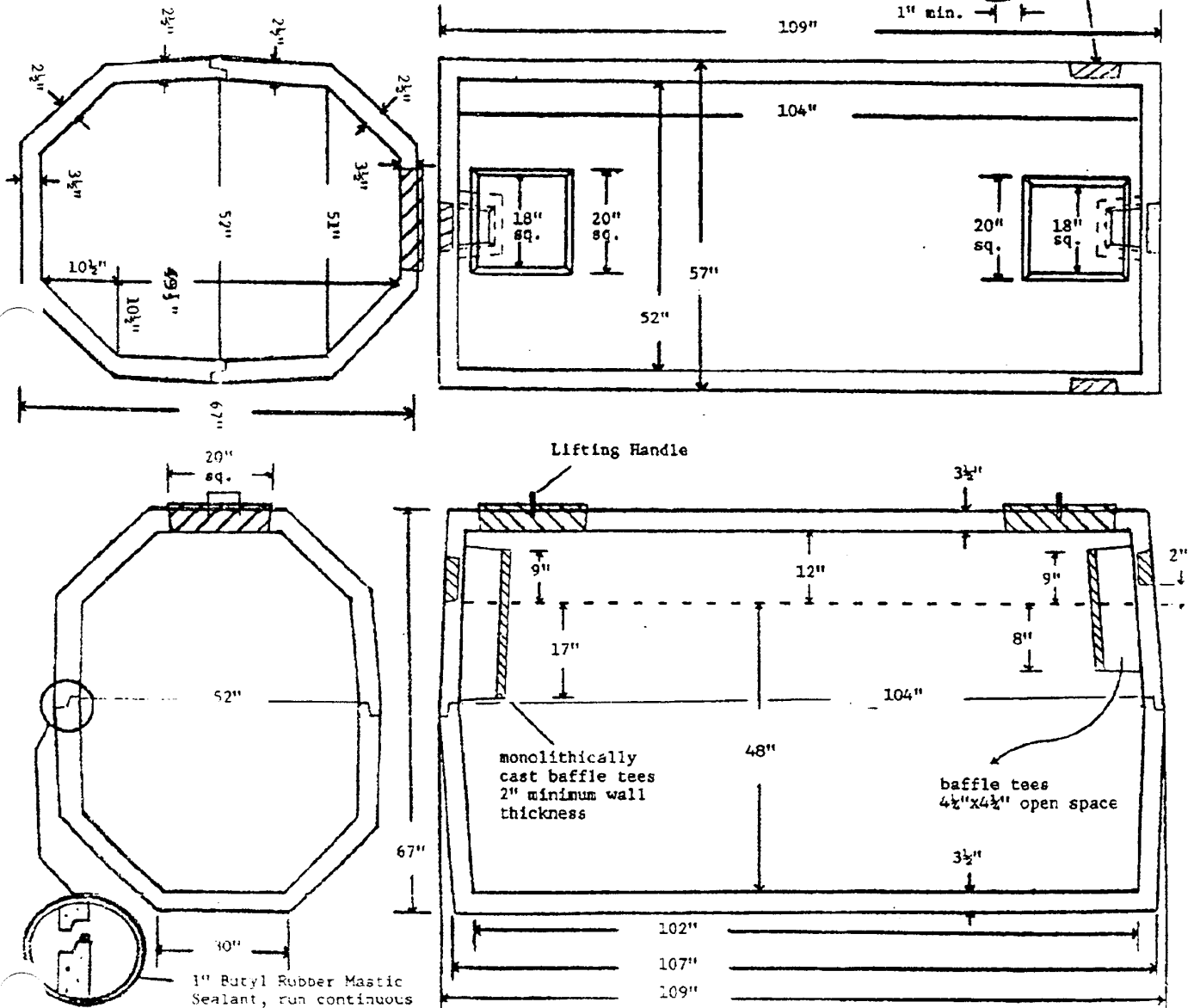
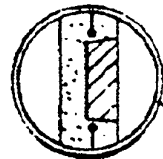
Manufactured by:

B.M.C.I.
Code 006

LIQUID CAPACITY: 1,043 Gallons

1.90 yds. = 7,600 lbs.

Ratio: 2.02 to 1



MANUFACTURED BY:

B.M.C.I.
Code 007

TWO-PIECE, ONE-COMPARTMENT SEPTIC TANK

Manufacturer's name, state serial number (if applicable), address (if applicable), and liquid capacity imprinted to the right of the knockout on the outlet end of tank.

LIQUID CAPACITY: 1,293 Gallons

LIQUID DEPTH: 59"

FREEBOARD: 12"

LENGTH TO WIDTH RATIO: 2.02 to 1

NUMBER OF INLETS: 3

NUMBER OF OUTLETS: 1

OUTLET MANHOLE: 18" minimum square clearance (with #3 rebar handle)
(Weight: 109 lbs.)

INLET MANHOLE: 18" minimum square clearance (with #3 rebar handle)
(Weight: 109 lbs.)

INLET TEE OR BAFFLE: TEE: Monolithically cast baffle tees with a 2" min. wall thickness with a 4 1/2" x 4 1/2" open space in cross section extending 8" below liquid level

OUTLET TEE OR BAFFLE: TEE: Monolithically cast baffle tees with a 2" min. wall thickness with a 4 1/2" x 4 1/2" open space in cross section extending 21" below liquid level

BAFFLE OR PARTITION WALL: N/A

CONCRETE: 3500 PSI minimum

REINFORCING: 6"x6"x10/10 wire mesh centered in all walls, ends, baffle or partition wall, top and bottom

SEALANTS: 1" Butyl Rubber Mastic Sealant in tongue and groove jointline between top and bottom half of tank (run continuous) or concrete grout

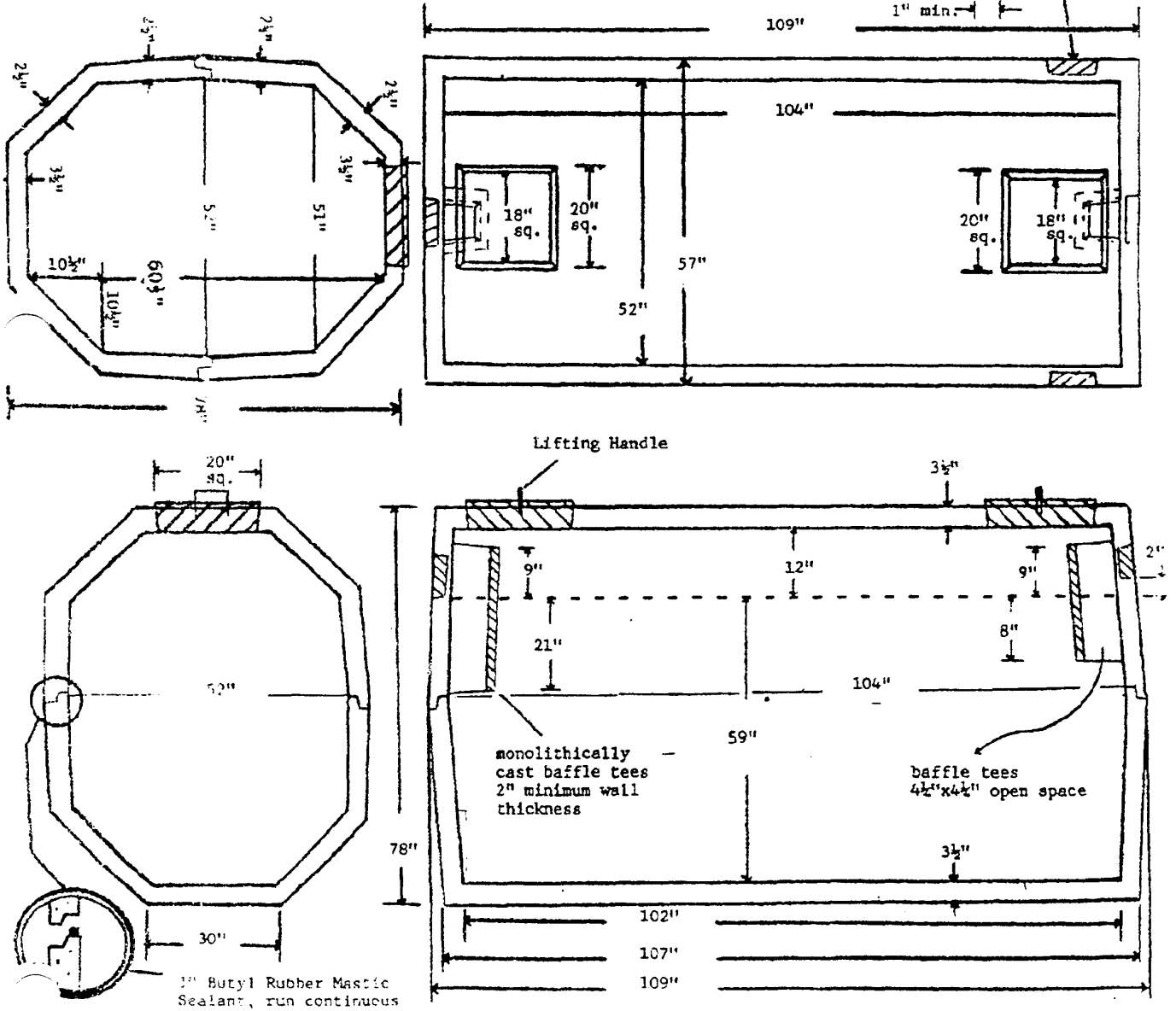
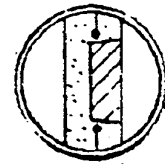
Manufactured by:

B.M.C.I.
Code 007

LIQUID CAPACITY: 1,293.00 Gallons

2.60 yds. = 8,240 lbs.

Ratio: 2.02 to 1



1" Butyl Rubber Mastic Sealant, run continuous