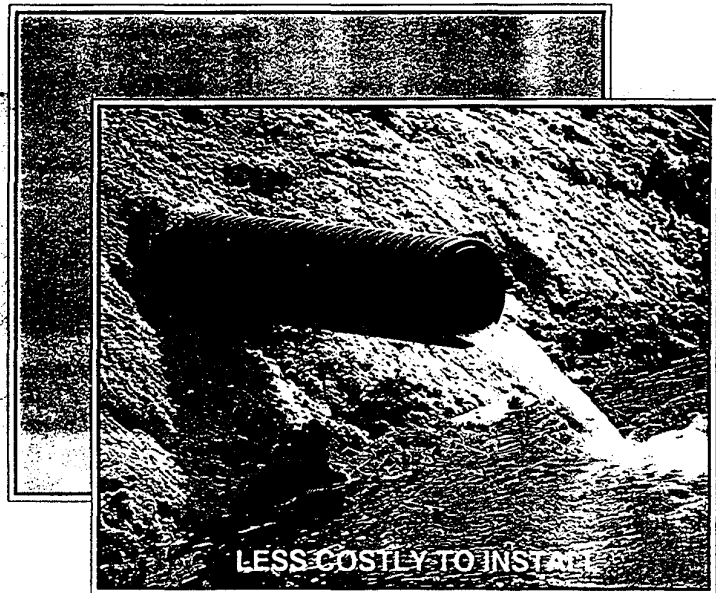


**Plastic  
Tubing, Inc.**

**PTI CORR-A-FLOW<sup>®</sup>**

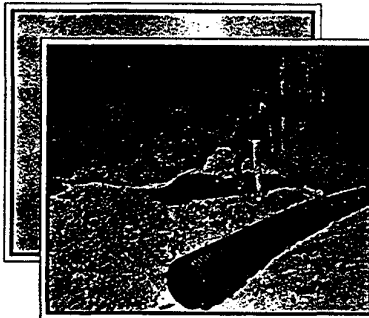
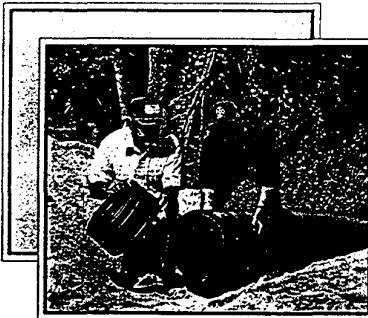
Type S and Type SP

**DOUBLE WALL TUBING**



**“We make a difference in pipe”**

© Registered Trademark



**Superior:**

- Hydraulics
- Abrasion Resistance
- Chemical Resistance

**Structurally Sound!**

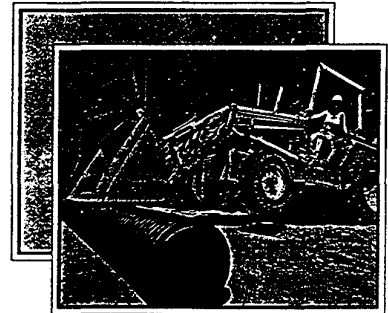
**Safety:**

- Much safer to install than heavy concrete

**Lightweight:**

- Use a pick-up and bobcat versus a two-ton truck and backhoe.

**Saves labor and equipment.**



**PTI CORR-A-FLOW ® #**

Pipe Size (inches)	Minimum Cover H2O Live Load (inches)	Stiffness (PSI) * PTI/DW Actual	AASHTO Spec <sup>†</sup>
4	12	75	35
6	12	50	35
8	12	55	35
12	12	75	50
15	12	60	42
18	12	52	40
24	12	Avail. soon	34

Based on standard installation practices and soil quality. \* AASHTO M252 or M294  
 † Measured from top of pipe. # Type "S"  
 • Average at 5% deflection

* MANNINGS ROUGHNESS COEFFICIENT (n)	
Material	Roughness Coefficient (n)
PTI Corr-A-Flow® PE Double Wall Pipe	0.012
Concrete Pipe	0.013
Corrugated Metal Pipe	0.024**

\*\* Varies with size and shape of corrugations.

Nationwide Toll Free Numbers:  
 North Carolina: 1-800-448-4PTI (1-800-448-4784)  
 Alabama: 1-800-438-4PTI (1-800-438-4784)

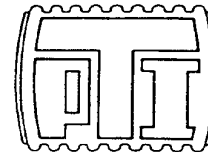
NC FAX: 919-525-4934 AL FAX: 205-625-5120

**Choose either Standard or Water Tight fittings.**

**SIZES:**

**4", 6", 8", 12", 15", 18", 24" \***

\* AASHTO M252, AASHTO M294, SCS 606 AS APPLICABLE.



**Plastic Tubing, Inc.**

CORPORATE HEADQUARTERS:  
 Box 878, Roseboro, NC 28382  
 919-525-5121

DISTRICT OFFICES: Atlanta, GA • Birmingham, AL • Richmond, VA • Nashville, TN  
 PLANTS: Roseboro, NC 919-525-5121 • Oneonta, AL 205-625-5121 • Orlando, FL 407-298-5121