

INCINOLET

That Electric Toilet



A Most Timely Product...

INCINOLET electric incinerating toilet system solves the critical problems of water, waste and pollution of our ground water resources. Water is not used at all in this system and nothing is drained out. Easy to install, INCINOLET can be used in any climate.

INCINOLET GIVES YOU:

CONVENIENCE

An indoor, near-at-hand, exceptionally sanitary toilet facility where you want it - wherever electric power is available.

AFFORDABILITY

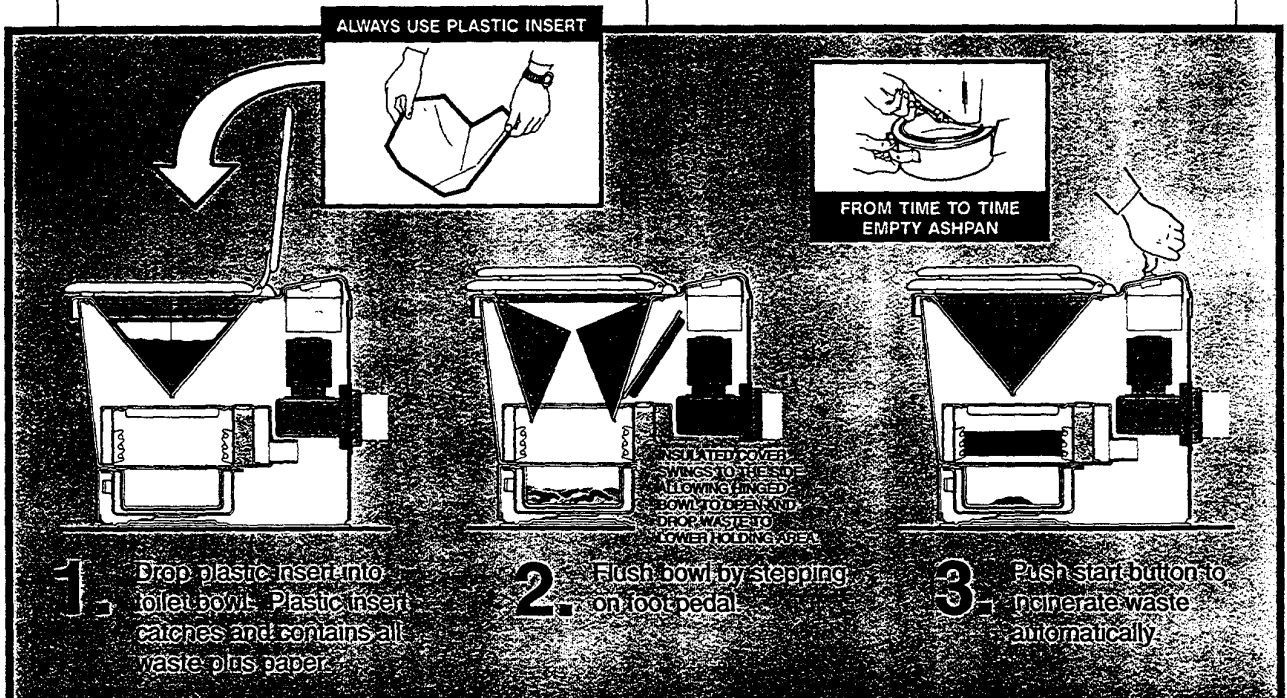
Much less costly than other systems, and there's no digging or plumbing involved.

EASY TO USE AND INSTALL

Simply install a ventline (included) and plug into power. That's it!

QUALITY

Makes INCINOLET one American product popular internationally.



HOW THE INCINOLET WORKS

INCINOLET uses electric heat to reduce human waste (urine, solids, paper) to a tablespoonful of clean ash, dumped periodically into the garbage. INCINOLET remains immaculately clean because waste never touches the bowl surface: a plastic insert, dropped into the bowl prior to use, captures the waste, then both insert and its content drop into the incinerator chamber when the foot pedal is pushed. Outside surfaces remain cool to touch. You may use INCINOLET at any time even while it is in cycle.

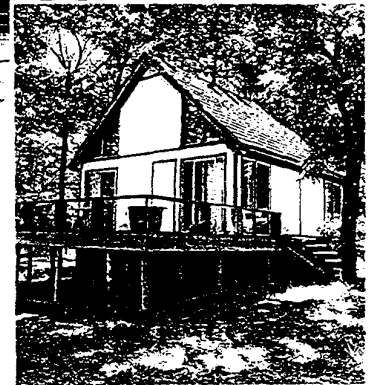
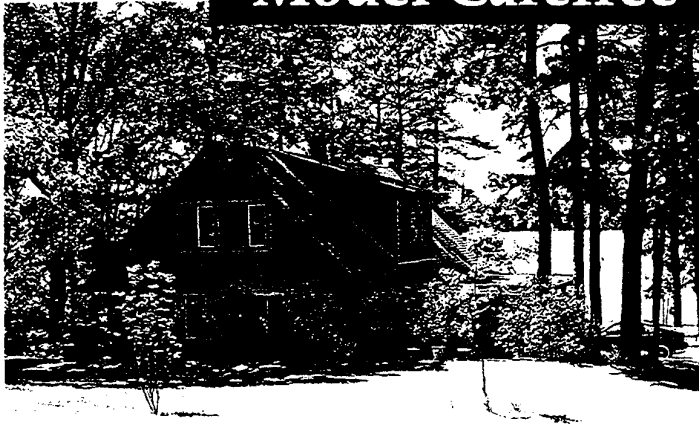
A TYPICAL CYCLE

Incineration cycle is initiated with push button. Both heater and blower come on when button is pushed. Heater alternates off and on for 60 minutes, blower continues on until unit has cooled.

Several persons may use the toilet in rapid succession. Push the start button after each use to reset the timer to the beginning of the cycle each time.

WHICH INCINOLET IS RIGHT FOR YOU?

Model Carefree



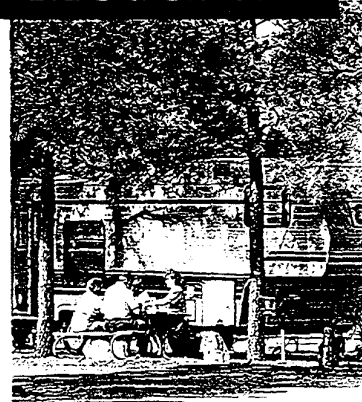
Recommended for home, cottage, guest house, cabana, boat dock, barn, shop. Serves from one to six persons.

- Trash the outhouse! Now, you can go inside.
- Extend the life of an outmoded septic system.
- Provide a convenient toilet without the cost or mess of adding to sewer lines or septic systems.

MODEL CF, with vent kit, 4 foot power cord, 200 plastic inserts, stainless steel insert dispenser, one year warranty, 120 or 240 volts. Ready for installation...\$1449



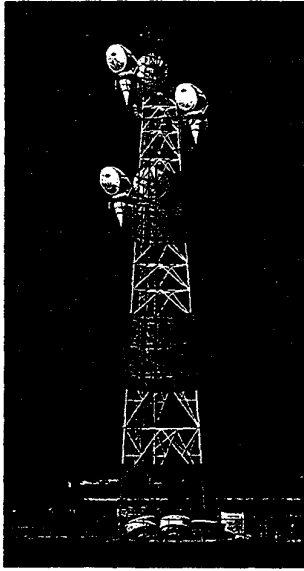
Model RV



Recommended for mobile homes, labs, equipment. Similar to Model Carefree above; equipped with vibration-absorbing pads underneath unit, both mounted to stainless steel plate for bolting to floor of vehicle.

- Discard a holding tank and avoid the mess
- Bypass the pump-out. Park anywhere overnight
- Gain some real freedom!

MODEL RV, same as Model Carefree plus vibration-absorbing pads and mounting plate. Ready for installation...\$1479



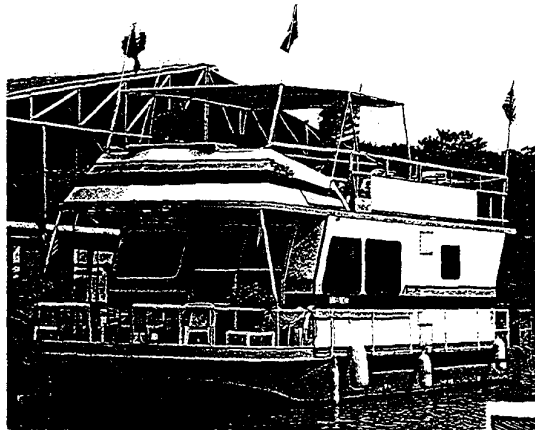
Model TR



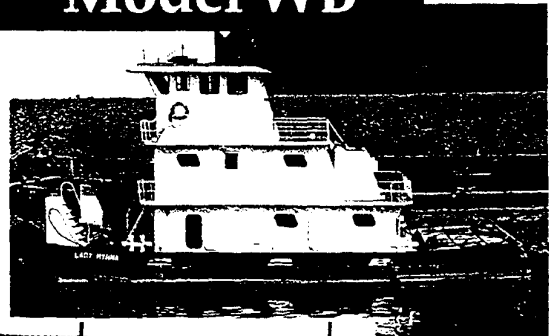
Recommended for remote locations or work areas where larger capacity is needed. Serves from one to ten persons. Model TR has a TWO YEAR WARRANTY on controls.

- Eliminate costly work loss with near-at-hand convenience.
- Save cost of water wells and septic systems.
- Forget forever the smelly, unsanitary rental toilet.

MODEL TR, with larger capacity. Serves 10 people. Comes with vent kit, 4 foot power cord, 200 plastic inserts, stainless steel insert dispenser, TWO YEAR WARRANTY on controls, either 208 or 240 volts. Ready for installation.....\$1679

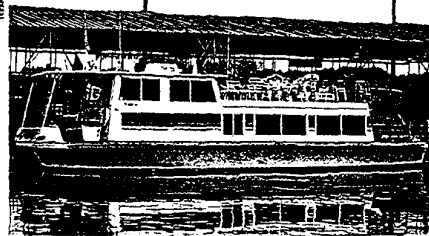


Model WB



Recommended for houseboats, work boats, barges, unloading docks, dockside cranes, U.S.C.G. certified. Similar to Model TR.

- Avoid the pump-out station, few and far between.
- Make your houseboat a complete live-aboard.
- Put a modern toilet concept to work for you!



MODEL WB, same as Model TR plus mounting plate and U.S.C.G. certification. Ready for installation.....\$1699

INSTALLATION IS SIMPLE

INCINOLET system comes to you as a complete, ready-to-install package. Installation is quick and easy.

- Set the unit on the floor.
- Connect the vent pipe between the unit and the outside.
- Plug into electric power.
- Mount insert dispenser on wall near unit.

CAPACITY

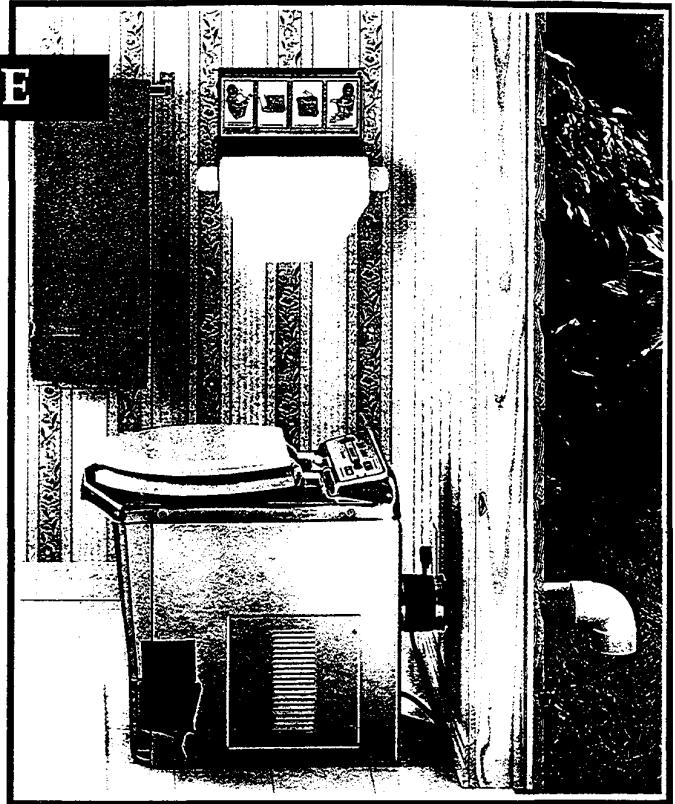
Number of persons using toilet full-time:

Model CF and RV:

CAPACITY	VOLTS	CURRENT	WATTS
6 persons	240	7.5 amps	1800
6 persons	120	15 amps	1800

Model TR and WB:

CAPACITY	VOLTS	CURRENT	WATTS
10 persons	240	15 amps	3600
10 persons	208	17.5 amps	3600



EASY TO MAINTAIN

WIPE SURFACES

with a damp cloth occasionally. Or to restore high sheen, use stainless steel polish.

EMPTY ASHPAN

at least once every week, more often with heavy usage.



ODOR CONTROL SYSTEM

A platinum type catalyst, similar to that used in automobile emission systems, controls smoke and odor.

GENERAL DIMENSIONS

- Width.....15 inches
- Height.....20 inches
- Depth.....24 inches
- Ventpipe.....3 inch dia.
- Blower.....100 cfm

ENVIRONMENTALLY KIND

INCINOLET can be used in the most environmentally fragile areas. It uses no water and drains nothing out. INCINOLET produces no odor and its emissions to the air are clean. Ash residue has been burned to 1400 degrees Fahrenheit and is completely germfree. Simply throw the ash out with the household garbage.

ENERGY CONSUMPTION

About one kilowatt-hour of electricity is consumed during one incineration cycle. One cycle can incinerate about four urine deposits, so that average energy consumption per use can be as low as 1/4 kw-hr. On average, four persons using toilet full time will consume about eight kilowatt hours of electricity per day. Estimates are based on a 120 volt unit with a 1800 watt heater.

A Word About Us...

OUR COMPANY

RESEARCH PRODUCTS/Blankenship has manufactured the INCINOLET product for 30 years. INCINOLET is used extensively in Japan, Norway, and other countries. Our main offices are in Dallas, Texas, and Toronto, Ontario. Member of the Better Business Bureau of Dallas.

OUR PRODUCT

INCINOLET is built of heavy-duty stainless steel, and uses specially sealed and treated electric heaters and the finest control system in the world. Its rugged design is the result of 30 years experience. We build quality into every INCINOLET to give you years of dependable service.

OUR SERVICE

SERVICE after the sale: You will find us willing, eager, in fact, to assist you as our very important customer.

SAFETY PRECAUTIONS

We equip INCINOLET with temperature controllers, thermostats, and time limiters, all of highest quality, to assure you years of safe operation. INCINOLET is an appliance and, as with any other appliance, either electric or heating, it must be used carefully in accordance with manufacturer's recommendations. Children, when using the INCINOLET toilet, must be supervised by a responsible adult.

SATISFACTION GUARANTEED MONEY BACK GUARANTEE RETURN PRIVILEGE

You may return the INCINOLET for full refund less freight charges within 30 days of its receipt, provided it is returned undamaged and in the original carton. Later returns, if accepted in writing by the company, are subject to a substantial restocking charge.

PARTS DEPARTMENT

A full inventory of all parts is ready for immediate shipment, same day if you call by noon central time.

PATENTS POLICY

We pursue an active patent program, both domestic and foreign.

WARRANTY

INCINOLET Models CF, and RV carry a full one year warranty. Models TR and WB are covered for an additional year on some components. See actual warranty for details. A copy of the warranty will be furnished free of charge upon request.

Listed by:

UL	MH7761
CSA	LR22785
USCG	159.015/2701/0

OPTIONAL LID COLORS



BROWN



BLUE



SAND



YELLOW

WHITE IS THE STANDARD COLOR.

A Most Timely Product...



INCINOLET
THAT ELECTRIC TOILET

RESEARCH PRODUCTS/Blankenship, U.S.A.

2639 Andjon • Dallas, Texas 75220 • (214) 358-4238 • FAX (214) 350-7919

CANADA: RESEARCH PRODUCTS/Blankenship of Canada, Ltd. • Mississauga, Ontario L4V 1H2

JAPAN: DIRAC, Inc. • Sakae-Ku, Yokohama • NORWAY: KEN-MAR A/S • Halden

CALL TOLL FREE NATIONWIDE 1-800-527-5551