



COMMONWEALTH of VIRGINIA

Department of Health
P O BOX 2448
RICHMOND, VA 23218

TTY 7-1-1 OR
1-800-828-1120

NOTICE AND DESCRIPTION OF SHELLFISH AREA CONDEMNATION NUMBER 036-197, MILFORD HAVEN

EFFECTIVE 15 MARCH 2023

Pursuant to Title 28.2, Chapter 8, §§ 28.2-803 through 28.2-808, § 32.1-20, and § 2.2-4002, B.16 of the Code of Virginia:

1. The “Notice of Establishment and Description of Shellfish Area Condemnation Number 36-197, Milford Haven,” effective 21 March 2019, is cancelled effective 15 March 2023.
2. Condemned Shellfish Area Number 036-197, shown as Sections A through E, is hereby established effective 15 March 2023. As to Sections A through D, it shall be unlawful for any person, firm, or corporation to take shellfish from these areas for any purpose, except by permit granted by the Marine Resources Commission, as provided in § 28.2-810 of the Code of Virginia. As to Section E, it shall be unlawful for any person, firm, or corporation to take shellfish from this area for any purpose. The boundaries of these areas are shown on the map titled “Milford Haven, Condemned Shellfish Area Number 36-197, 15 March 2023” which is part of this notice.
3. Seasonally Condemned Shellfish Area Number 036-197, shown as Sections M1 through M2, is hereby established effective 1 March 2023, and shall remain in force annually thereafter for the period beginning the first day of April through the last day of October until rescinded. It shall be unlawful for any person, firm, or corporation to take shellfish from these areas during such period for any purpose, except by permit granted by the Marine Resources Commission, as provided in § 28.2-810 of the Code of Virginia. The boundaries of these areas are shown on the map titled “Milford Haven, Condemned Shellfish Area Number 036-197, 15 March 2023” which is part of this notice.
4. Seasonally Condemned Shellfish Area Number 036-197, shown as Sections S126 and S212, is hereby established effective 15 March 2023, and shall remain in force annually thereafter for the period beginning the first day of April through the last day of October until rescinded. It shall be unlawful for any person, firm, or corporation to take shellfish from these areas during such period for any purpose, except by permit granted by the Marine Resources Commission, as provided in § 28.2-810 of the Code of Virginia. The boundaries of these areas are shown on the map titled “Milford Haven, Condemned Shellfish Area Number 036-197, 15 March 2023” which is part of this notice.

5. The Department of Health will receive, consider and respond to petitions by any interested person at any time with respect to reconsideration or revision of this order.

BOUNDARIES OF CONDEMNED AREA NUMBER 036-197

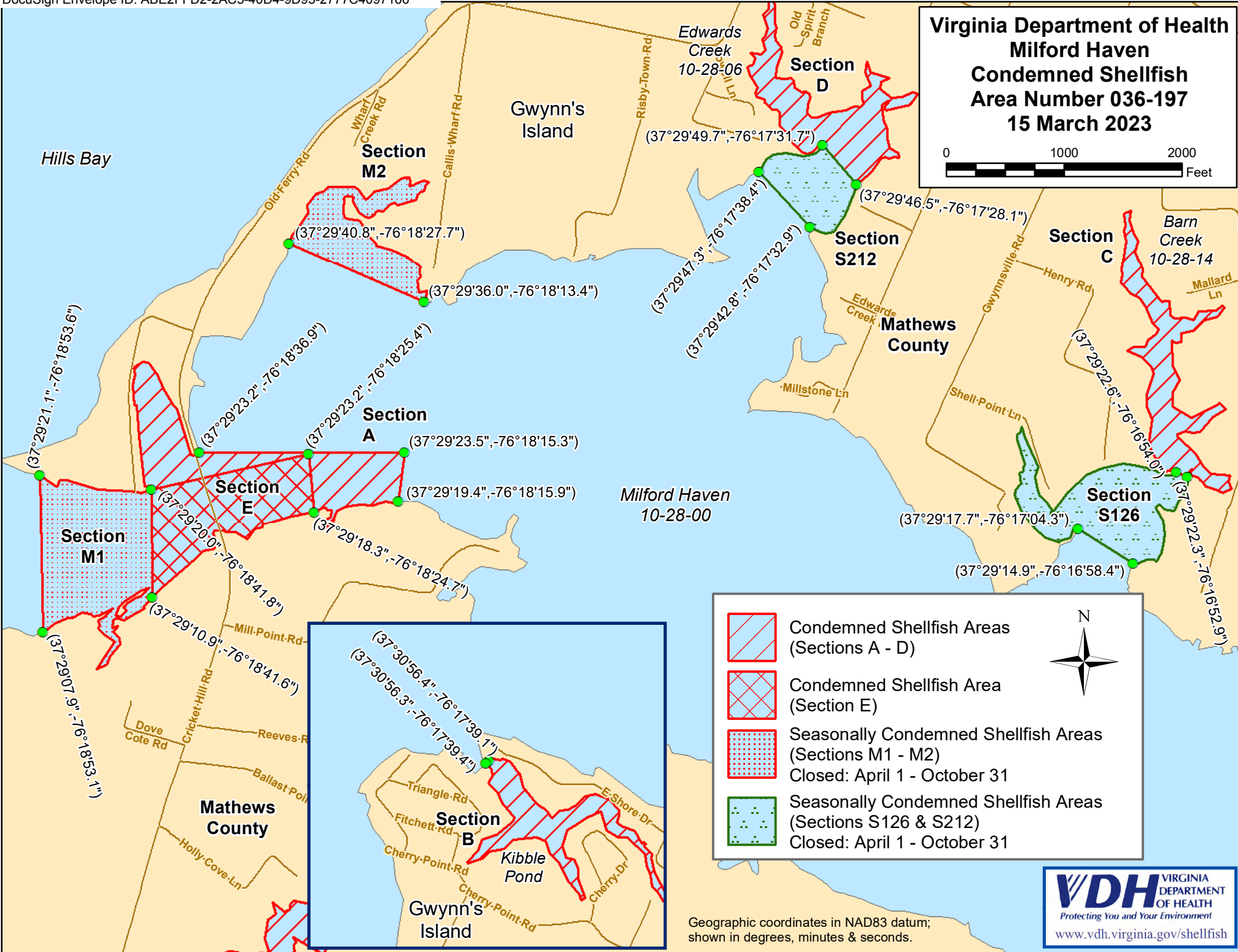
- A. The condemned area shall include all of that portion of Milford Haven enclosed by a line drawn from latitude / longitude map coordinate (37°29'19.4",-76°18'15.9") on the south shoreline, then northerly to map coordinate (37°29'23.5",-76°18'15.3"), then westerly to map coordinate (37°29'23.2",-76°18'36.9") on the north end of the bridge on Gwynn's Island, then westerly along the shoreline to map coordinate (37°29'20.0",-76°18'41.8"), then easterly to map coordinate (37°29'23.2",-76°18'25.4"), then southerly to map coordinate (37°29'18.3",-76°18'24.7"), then along the shoreline to the point of beginning.
- B. The condemned area shall include that portion of Kibble Pond and its tributaries upstream of a line drawn from latitude / longitude map coordinate (37°30'56.4",-76°17'39.1") to map coordinate (37°30'56.3",-76°17'39.4").
- C. The condemned area shall include that portion of Barn Creek and its tributaries upstream of a line drawn from latitude / longitude map coordinate (37°29'22.6",-76°16'54.0") to map coordinate (37°29'22.3",-76°16'52.9").
- D. The condemned area shall include that portion of Edwards Creek and its tributaries upstream of a line drawn from latitude / longitude map coordinate (37°29'49.7",-76°17'31.7") to map coordinate (37°29'46.5",-76°17'28.1").
- E. The condemned area shall include all of that portion of Milford Haven enclosed by a line drawn from latitude / longitude map coordinate (37°29'18.3",-76°18'24.7") on the south shoreline, then north to map coordinate (37°29'23.2",-76°18'25.4"), then southwestly to map coordinate (37°29'20.0",-76°18'41.8"), then southerly to map coordinate (37°29'10.9",-76°18'41.6") then easterly along the shoreline to the point of beginning.
- M1. The seasonally condemned area shall include that portion of Milford Haven east of a line drawn from latitude / longitude map coordinate (37°29'21.1",-76°18'53.6") to map coordinate (37°29'07.9",-76°18'53.1"), and west of a line drawn from map coordinate (37°29'20.0",-76°18'41.8") to map coordinate (37°29'10.9",-76°18'41.6").
- M2. The seasonally condemned area shall include that portion of Milford Haven inland of a line drawn from latitude / longitude map coordinate (37°29'40.8",-76°18'27.7") to map coordinate (37°29'36.0",-76°18'13.4").
- S126. The seasonally condemned area shall include that portion of Barn Creek and its tributaries upstream of a line drawn from latitude / longitude map coordinate (37°29'17.7",-76°17'04.3") to map coordinate (37°29'14.9",-76°16'58.4"); but excludes the area defined as Section C.

S212. The seasonally condemned area shall include that portion of Edwards Creek and its tributaries upstream of a line drawn from latitude / longitude map coordinate (37°29'47.3", -76°17'38.4") to map coordinate (37°29'42.8", -76°17'32.9"); but excludes the area defined as Section D.

Recommended by: DocuSigned by:
Danielle Schools
74562991731474
Director, Division of Shellfish Safety

Ordered by: DocuSigned by:
Julie Henderson 2/28/2023 | 10:28:22 AM EST
242A945FF3E1474
Director, Office of Environmental Health Services Date

Virginia Department of Health
Milford Haven
Condemned Shellfish
Area Number 036-197
15 March 2023



- Condemned Shellfish Areas (Sections A - D)
- Condemned Shellfish Area (Section E)
- Seasonally Condemned Shellfish Areas (Sections M1 - M2)
Closed: April 1 - October 31
- Seasonally Condemned Shellfish Areas (Sections S126 & S212)
Closed: April 1 - October 31

Geographic coordinates in NAD83 datum; shown in degrees, minutes & seconds.