



COMMONWEALTH of VIRGINIA

Department of Health
P O BOX 2448
RICHMOND, VA 23218

TTY 7-1-1 OR
1-800-828-1120

NOTICE AND DESCRIPTION OF SHELLFISH AREA CONDEMNATION NUMBER 037-061, STUTTS CREEK AND VICINITY

EFFECTIVE 15 MARCH 2023

Pursuant to Title 28.2, Chapter 8, §§ 28.2-803 through 28.2-808, § 32.1-20, and § 2.2-4002, B.16 of the Code of Virginia:

1. The “Notice of Establishment and Description of Shellfish Area Condemnation Number 037-061, Stutts Creek and Vicinity,” effective 15 February 2022, is cancelled effective 15 March 2023.
2. Condemned Shellfish Area Number 037-061, shown as Sections A through E, is hereby established effective 15 March 2023. It shall be unlawful for any person, firm, or corporation to take shellfish from these areas for any purpose, except by permit granted by the Marine Resources Commission, as provided in § 28.2-810 of the Code of Virginia. The boundaries of these areas are shown on the map titled “Stutts Creek and Vicinity, Condemned Shellfish Area Number 037-061, 15 March 2023” which is part of this notice.
3. Seasonally Condemned Shellfish Area Number 037-061, shown as Sections M1 and M2, is hereby established effective 15 March 2023, and shall remain in force annually thereafter for the period beginning the first day of April through the last day of October until rescinded. It shall be unlawful for any person, firm or corporation to take shellfish from these areas during such period for any purpose, except by permit granted by the Marine Resources Commission, as provided in § 28.2-810 of the Code of Virginia. The boundaries of these areas are shown on the map titled “Stutts Creek and Vicinity, Condemned Shellfish Area Number 037-061, 15 March 2023” which is part of this notice.
4. Seasonally Condemned Shellfish Area Number 037-061, shown as Sections S128, S130 and S131, is hereby established effective 15 March 2023, and shall remain in force annually thereafter for the period beginning the first day of April through the last day of October until rescinded. It shall be unlawful for any person, firm or corporation to take shellfish from these areas during such period for any purpose, except by permit granted by the Marine Resources Commission, as provided in § 28.2-810 of the Code of Virginia. The boundaries of these areas are shown on the map titled “Stutts Creek and Vicinity, Condemned Shellfish Area Number 037-061, 15 March 2023” which is part of this notice.
5. The Department of Health will receive, consider and respond to petitions by any interested person at any time with respect to reconsideration or revision of this order.

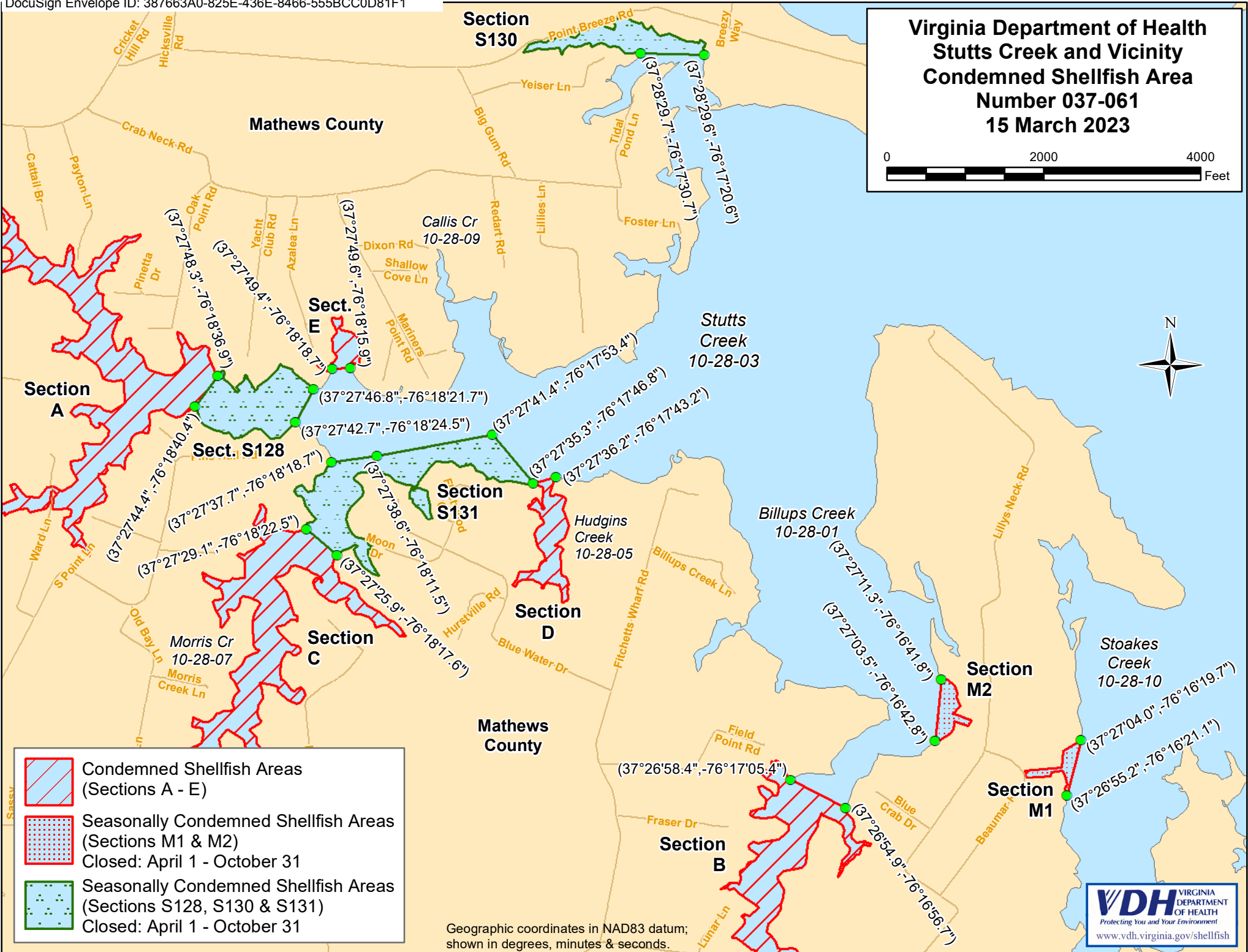
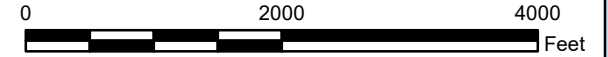
BOUNDARIES OF CONDEMNED AREA NUMBER 037-061

- A. The condemned area shall include that portion of Stutts Creek and its tributaries upstream of a line drawn between latitude / longitude map coordinate (37°27'48.3",-76°18'36.9") and map coordinate (37°27'44.4",-76°18'40.4").
- B. The condemned area shall include that portion of Billups Creek and its tributaries upstream of a line drawn between latitude / longitude map coordinate (37°26'58.4",-76°17'05.4") and map coordinate (37°26'54.9",-76°16'56.7").
- C. The condemned area shall include that portion of Morris Creek and its tributaries upstream of a line drawn between latitude / longitude map coordinate (37°27'29.1",-76°18'22.5") and map coordinate (37°27'25.9",-76°18'17.6").
- D. The condemned area shall include all of Hudgins Creek upstream of a line drawn between latitude / longitude map coordinate (37°27'35.3",-76°17'46.8") and map coordinate (37°27'36.2",-76°17'43.2").
- E. The condemned area shall include all of the unnamed tributary of Stutts Creek upstream of a line drawn between latitude / longitude map coordinate (37°27'49.4",-76°18'18.7") and map coordinate (37°27'49.6",-76°18'15.9").
- M1. The seasonally condemned area shall include all of Stoakes Creek inland of a line drawn between latitude / longitude map coordinate (37°27'04.0",-76°16'19.7") and map coordinate (37°26'55.2",-76°16'21.1").
- M2. The seasonally condemned area shall include that portion of Billups Creek inland of a line drawn between latitude / longitude map coordinate (37°27'11.3",-76°16'41.8") and map coordinate (37°27'03.5",-76°16'42.8").
- S128. The seasonally condemned area shall include that portion of Stutts Creek upstream of a line drawn between latitude / longitude map coordinate (37°27'46.8",-76°18'21.7") and map coordinate (37°27'42.7",-76°18'24.5"); but excludes the area defined as Section A.
- S130. The seasonally condemned area shall include that portion of the unnamed tributary of Stutts Creek upstream of a line drawn between latitude / longitude map coordinate (37°28'29.7",-76°17'30.7") and map coordinate (37°28'29.6",-76°17'20.6").
- S131. The seasonally condemned area shall include that portion of Stutts and Morris Creeks inland and upstream of a line drawn between latitude / longitude map coordinate (37°27'37.7",-76°18'18.7"), map coordinate (37°27'38.6",-76°18'11.5"), map coordinate (37°27'41.4",-76°17'53.4"), and map coordinate (37°27'35.3",-76°17'46.8"); but excludes the area defined as Section C.

Recommended by: DocuSigned by:
Danielle Schools
 Director, Division of Shellfish Safety

Ordered by: DocuSigned by:
Julie Henderson 2/28/2023 | 12:25:06 PM EST
 Director, Office of Environmental Health Services Date

Virginia Department of Health Stutts Creek and Vicinity Condemned Shellfish Area Number 037-061 15 March 2023



- Condemned Shellfish Areas (Sections A - E)
- Seasonally Condemned Shellfish Areas (Sections M1 & M2)
Closed: April 1 - October 31
- Seasonally Condemned Shellfish Areas (Sections S128, S130 & S131)
Closed: April 1 - October 31

Geographic coordinates in NAD83 datum; shown in degrees, minutes & seconds.