



COMMONWEALTH of VIRGINIA

Department of Health

P O BOX 2448
RICHMOND, VA 23218

TTY 7-1-1 OR
1-800-828-1120

NOTICE AND DESCRIPTION OF SHELLFISH AREA CONDEMNATION NUMBER 052-006, YORK RIVER AND WORMLEY CREEK

EFFECTIVE 15 MAY 2023

Pursuant to Title 28.2, Chapter 8, §§ 28.2-803 through 28.2-808, § 32.1-20, and § 2.2-4002, B.16 of the Code of Virginia:

1. The "Notice and Description of Shellfish Area Condemnation Number 052-006, York River and Wormley Creek," effective 3 May 2018, is cancelled effective 15 May 2023.
2. Condemned Shellfish Area Number 052-006, shown as Sections A through C, is established effective 15 May 2023. As to Section A, it shall be unlawful for any person, firm, or corporation to take shellfish from this area, for any purpose, except by permit granted by the Marine Resources Commission, as provided in § 28.2-810 of the Code of Virginia. As to Sections B and C, it shall be unlawful for any person, firm or corporation to take shellfish from these areas for any purpose. The boundaries of these areas are shown on the map titled "York River and Wormley Creek, Condemned Shellfish Area Number 052-006, 15 May 2023" which is part of this notice.
3. Seasonally Condemned Shellfish Area Number 052-006, shown as Section M1, is hereby established effective 15 May 2023, and shall remain in force annually thereafter for the period beginning the first day of April through the last day of October until rescinded. It shall be unlawful for any person, firm or corporation to take shellfish from this area during such period for any purpose, except by permit granted by the Marine Resources Commission, as provided in § 28.2-810 of the Code of Virginia. The boundaries of this area are shown on the map titled "York River and Wormley Creek, Condemned Shellfish Area Number 052-006, 15 May 2023" which is part of this notice.
4. The Department of Health will receive, consider and respond to petitions by any interested person at any time with respect to reconsideration or revision of this order.

BOUNDARIES OF CONDEMNED AREA NUMBER 052-006

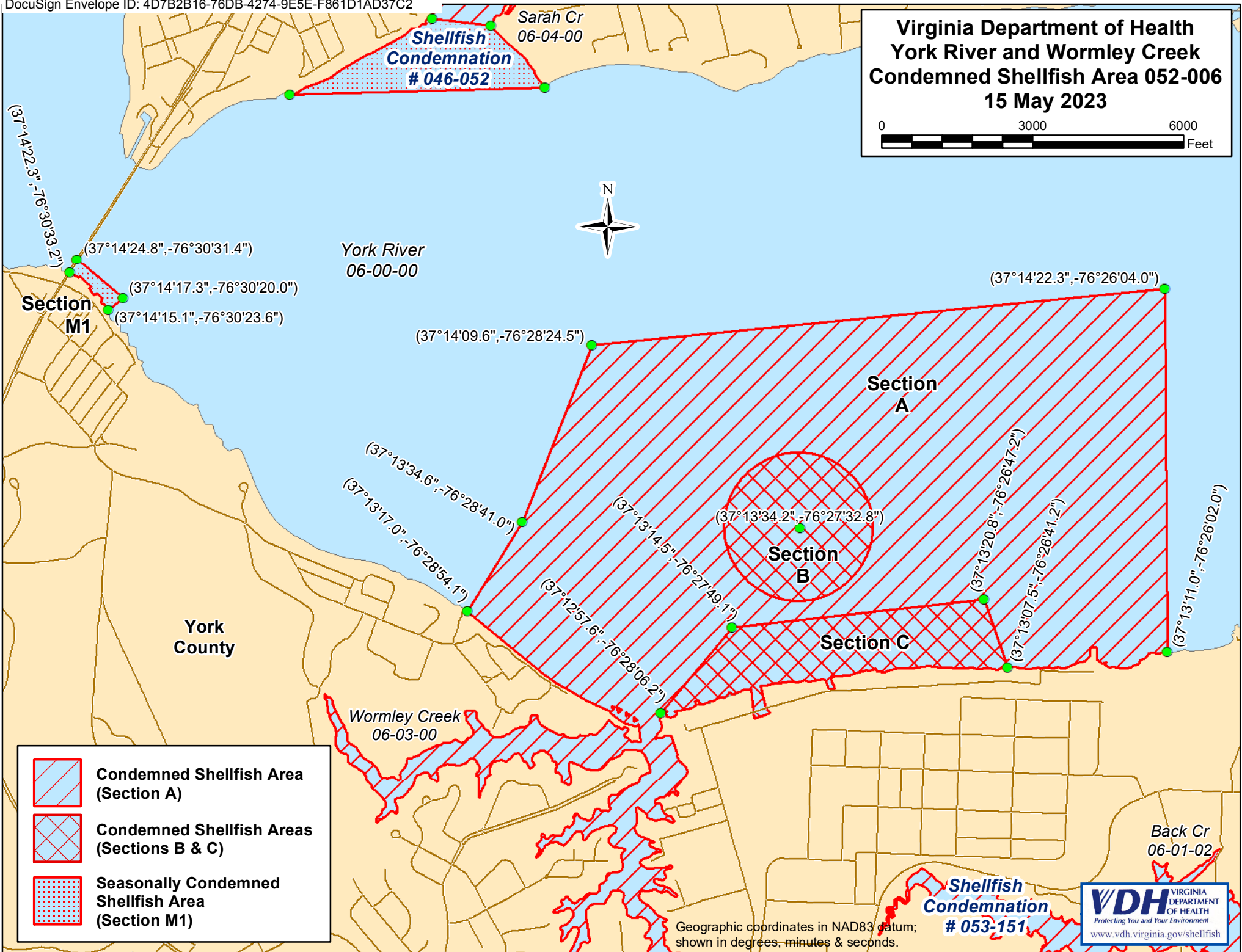
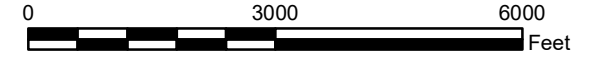
- A. The condemned area shall include that portion of the York River and its tributaries inland of a line drawn from latitude / longitude map coordinate (37°13'17.0",-76°28'54.1"), map coordinate (37°13'34.6",-76°28'41.0"), map coordinate (37°14'09.6",-76°28'24.5"), map coordinate map coordinate (37°14'22.3",-76°26'04.0") and map coordinate (37°13'11.0",-76°26'02.0"); but excluding the areas defined as Sections B and C.

- B. The condemned area shall include all of the York River enclosed by a circle of 500 yards radius around latitude / longitude map coordinate (37°13'34.2",-76°27'32.8").
- C. The condemned area shall include that portion of the York River inland of a line drawn from latitude / longitude map coordinate (37°12'57.6",-76°28'06.2"), map coordinate (37°13'14.5",-76°27'49.1"), map coordinate (37°13'20.8",-76°26'47.2"), and map coordinate (37°13'07.5",-76°26'41.2").
- M1. The seasonally condemned area shall include that portion of the York River inland of a line drawn from latitude / longitude map coordinate (37°14'22.3",-76°30'33.2"), map coordinate (37°14'24.8",-76°30'31.4"), map coordinate (37°14'17.3",-76°30'20.0"), and map coordinate (37°14'15.1",-76°30'23.6").

Recommended by: DocuSigned by:
Danielle Schools
 Director, Division of Shellfish Safety

Ordered by: DocuSigned by:
Julie Henderson 3/28/2023 | 9:47:27 AM EDT
 Director, Office of Environmental Health Services Date

Virginia Department of Health York River and Wormley Creek Condemned Shellfish Area 052-006 15 May 2023



**Shellfish
Condemnation
046-052**

Sarah Cr
06-04-00

York River
06-00-00

**Section
M1**

**Section
A**

**Section
B**

**Section
C**

York
County


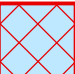
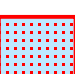
Wormley Creek
06-03-00

Back Cr
06-01-02

**Shellfish
Condemnation
053-151**



Geographic coordinates in NAD83 datum;
shown in degrees, minutes & seconds.

-  **Condemned Shellfish Area
(Section A)**
-  **Condemned Shellfish Areas
(Sections B & C)**
-  **Seasonally Condemned
Shellfish Area
(Section M1)**