



COMMONWEALTH of VIRGINIA

Department of Health
DIVISION OF SHELLFISH SANITATION
109 Governor Street, Room 614-B
Richmond, VA 23219

REGISTRAR OF REGULATIONS

10 AUG 10 PM 3: 23

Ph: 804-864-7487
Fax: 804-864-7481

NOTICE AND DESCRIPTION OF SHELLFISH AREA CONDEMNATION NUMBER 073-162, ATLANTIC OCEAN

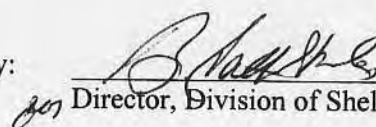
EFFECTIVE 23 AUGUST 2010

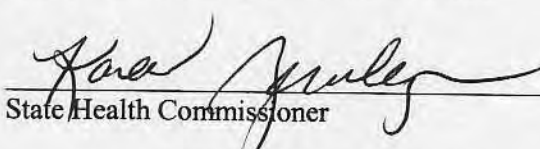
Pursuant to Title 28.2, Chapter 8, §§28.2-803 through 28.2-808, §32.1-20, and §2.2-4002, B.16 of the *Code of Virginia*:

1. The "Notice and Description of Shellfish Area Condemnation Number 073-162, Atlantic Ocean," effective 29 August 2006, is cancelled effective 23 August 2010.
2. Condemned Shellfish Area Number 073-162, shown as Sections A and B, is established effective 23 August 2010. As to Section A, it shall be unlawful for any person, firm, or corporation to take shellfish from this area for any purpose, except by permit granted by the Marine Resources Commission, as provided in Section 28.2-810 of the *Code of Virginia*. As to Section B; it shall be unlawful for any person, firm, or corporation to take shellfish from this area for any purpose. The boundaries of these areas are shown on the map titled "Atlantic Ocean, Condemned Shellfish Area Number 073-162, 23 August 2010" which is part of this notice.
3. The Department of Health will receive, consider and respond to petitions by any interested person at any time with respect to reconsideration or revision of this order.

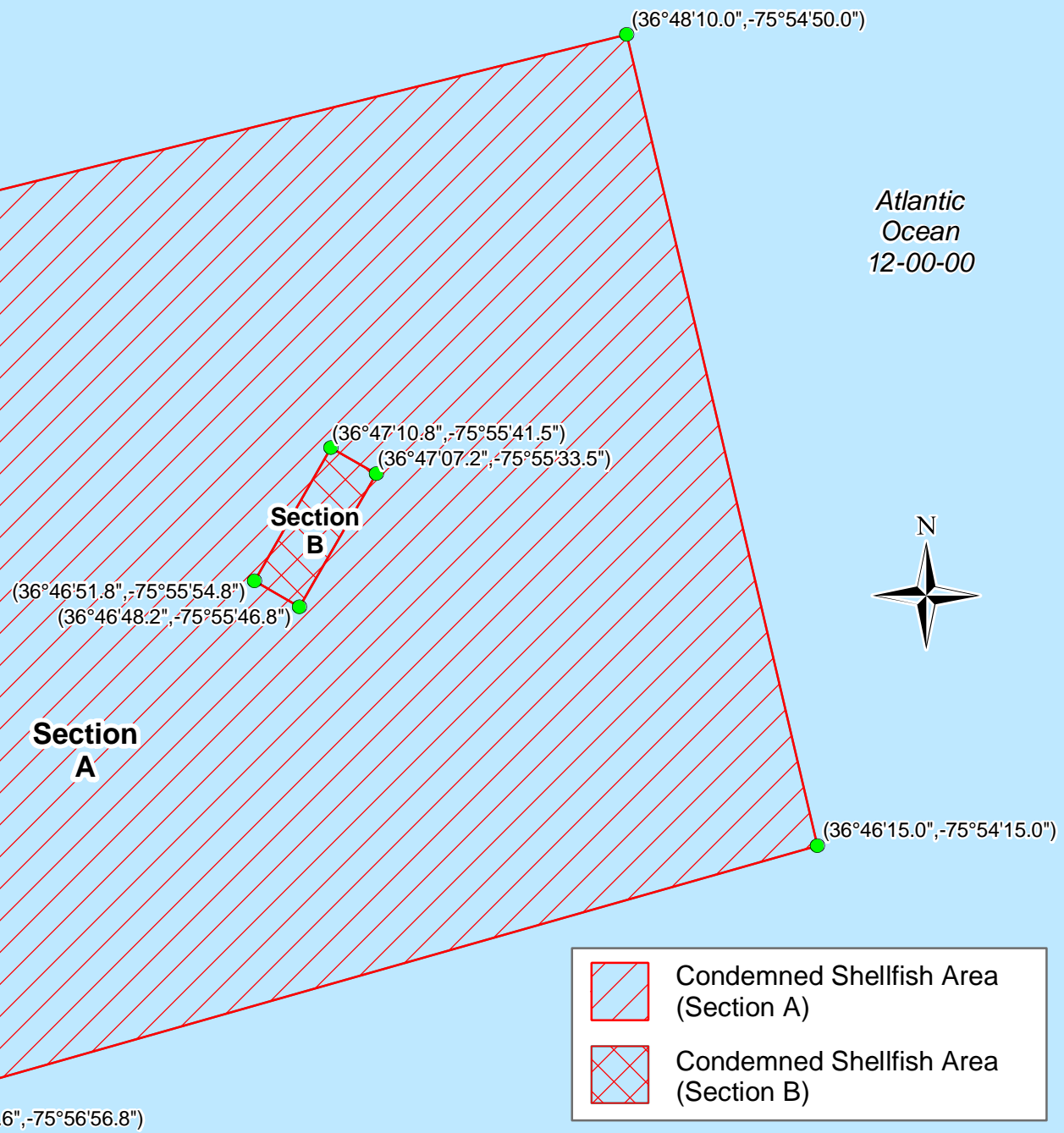
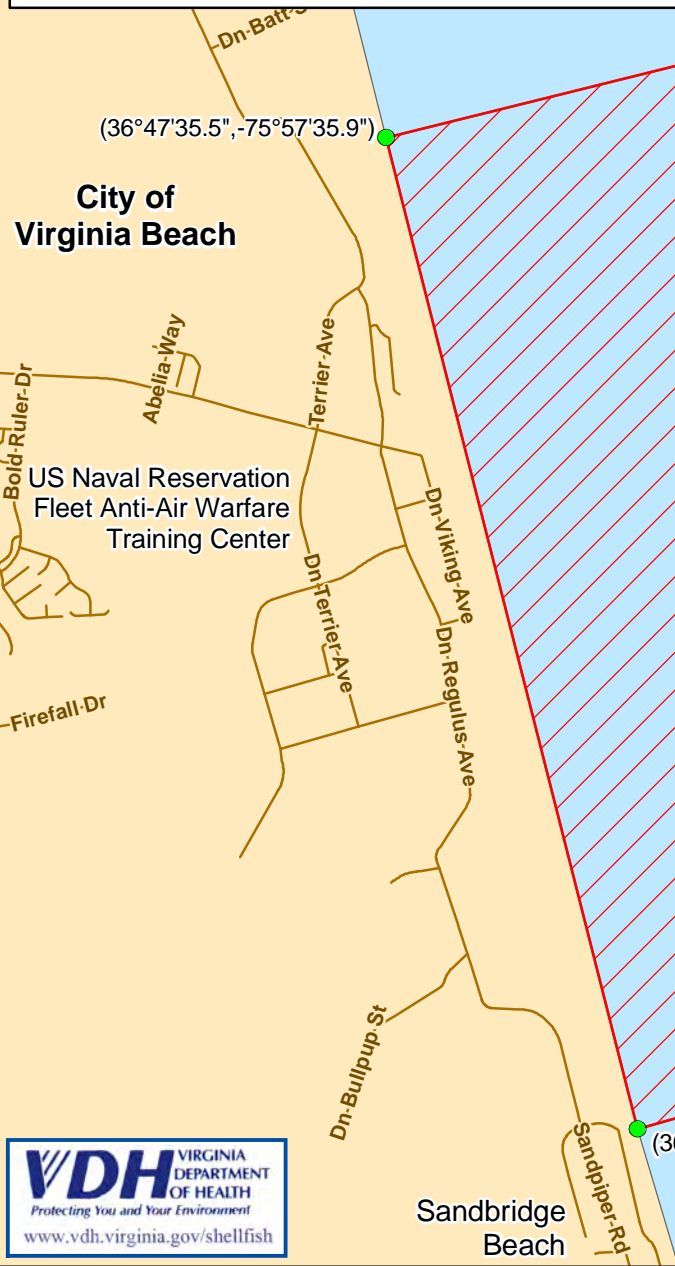
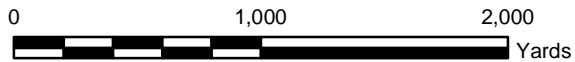
BOUNDARIES OF CONDEMNED AREA NUMBER 073-162



- A. The condemned area shall include all of that portion of the Atlantic Ocean inland of a line drawn from latitude/longitude map coordinate (36°47'35.5", -75°57'35.9"), to map coordinate (36°48'10.0", -75°54'50.0"), to map coordinate (36°46'15.0", -75°54'15.0") and to map coordinate (36°45'36.6", -75°56'56.8"); but excluding the area defined as Section B.
- B. The condemned area shall include that portion of the Atlantic Ocean enclosed by a line drawn from latitude/longitude map coordinate (36°47'10.8", -75°55'41.5"), map coordinate (36°47'07.2", -75°55'33.5"), map coordinate (36°46'48.2", -75°55'46.8"), map coordinate (36°46'51.8", -75°55'54.8") and back to the first map coordinate.

Recommended by: 
Director, Division of Shellfish Sanitation

Ordered by:  8/9/10
State Health Commissioner Date

**Virginia Department of Health
Atlantic Ocean
Condemned Shellfish Area 073-162
23 August 2010**



-  Condemned Shellfish Area (Section A)
-  Condemned Shellfish Area (Section B)



Geographic coordinates in NAD83 datum;
shown in degrees, minutes & seconds.