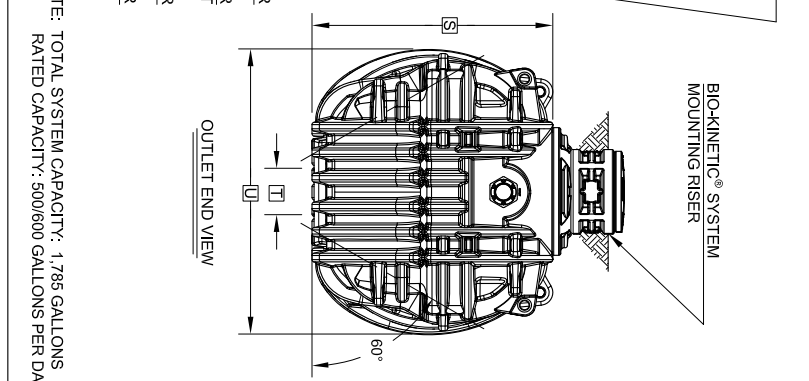
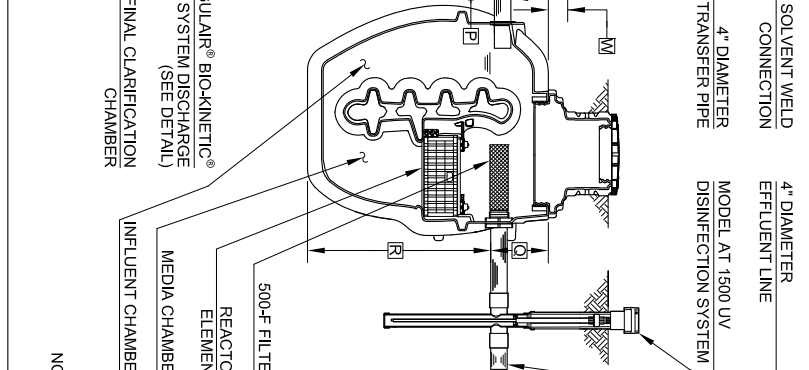
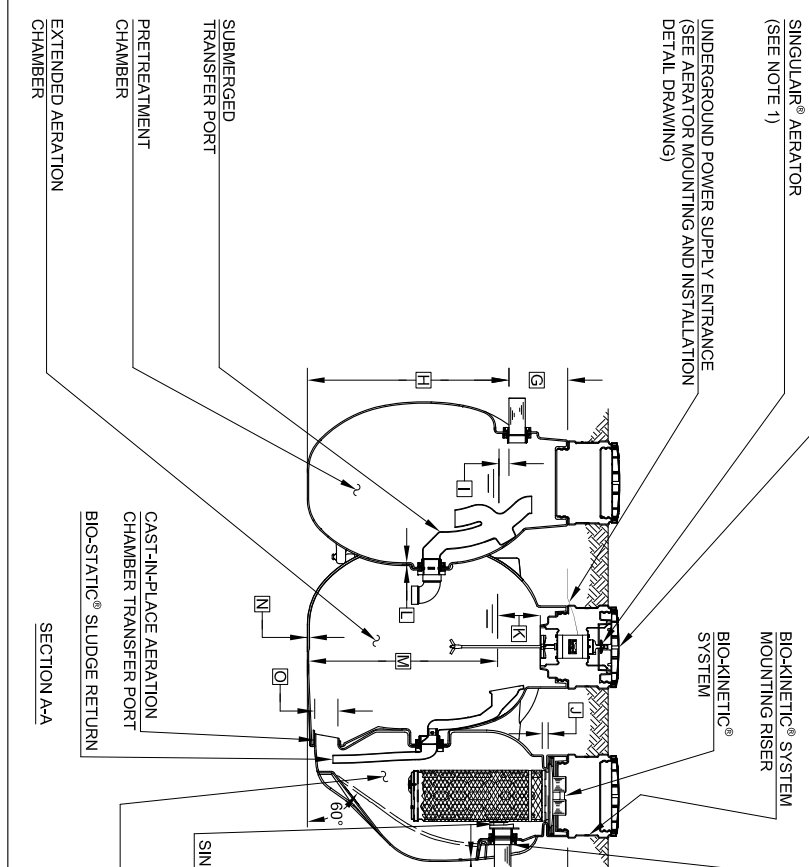


- GENERAL NOTES:**
- 1 SINGULAR® AERATOR, AS TESTED AND ACCEPTED BY NAT.
 - 2 FALL THROUGH SINGULAR® MODEL R3 SYSTEM FROM INLET INVERT TO OUTLET INVERT IS FIVE INCHES, INLET INVERT IS 16 INCHES BELOW THE RISER MOUNTING SURFACE.
 - 3 ON DEEPER INSTALLATIONS, RISERS MUST BE USED TO EXTEND AERATOR MOUNTING RISER, BIO-FILM REACTOR RISER, AND BIO-KINETIC® SYSTEM MOUNTING CASTING TO GRADE. INSPECTION COVER ON PRETREATMENT CHAMBER MUST BE DEVELOPED TO WITHIN TWELVE INCHES OF GRADE.
 - 4 REMOVABLE COVERS ON RISERS WEIGH IN EXCESS OF SEVENTY-FIVE POUNDS EACH TO PREVENT UNAUTHORIZED ACCESS.
 - 5 CONTACT THE LOCAL, LICENSED SINGULAR® DISTRIBUTOR FOR ELECTRICAL REQUIREMENTS.



PROJECT ENGINEER'S APPROVAL:
 I (WE) HEREBY CERTIFY THAT THIS DRAWING HAS BEEN CHECKED AND IS APPROVED FOR USE IN CONFORMITY WITH THE CONTRACT DOCUMENTS.

DATE: _____

NAME: _____

CONTRACTOR'S CERTIFICATION:
 I (WE) HEREBY CERTIFY THAT THIS DRAWING HAS BEEN CHECKED AND IS APPROVED FOR USE IN CONFORMITY WITH THE CONTRACT DOCUMENTS.

DATE: _____

NAME: _____

CRITICAL DIMENSIONS	
A	1'-5 1/2"
B	3'-3"
C	3'-5 1/4"
D	4'-2 1/4"
E	2'-8 3/4"
F	10'-6 1/2"
G	1'-4"
H	4'-7 1/2"
I	0'-3"
J	0'-1 1/2"
K	1'-0"
L	0'-0 3/4"
M	4'-4"
N	0'-0 3/8"
O	0'-6"
P	0'-0 3/8"
Q	1'-3 1/2"
R	4'-2 1/2"
S	5'-6"
T	1'-4"
U	6'-6"
V	5'-5"
W	0'-5 1/2"
X	0'-1 1/2"
Y	1'-0"
Z	1'-0"

U.S. AND FOREIGN PATENTS PENDING

norweco®

SINGULAR® GREEN WASTEWATER TREATMENT SYSTEM MODEL RS - 500 STD

DATE: 03-28-2018

DESIGNER: JMM

SCALE: NTS

PC-S-1192

NOTE: TOTAL SYSTEM CAPACITY: 1,785 GALLONS RATED CAPACITY: 500/600 GALLONS PER DAY