

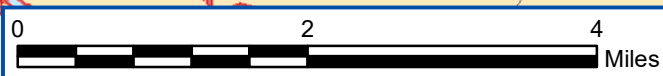
# VDH DSS Sampling Results

## Sampling Date: April 26, 2021

VDH, Div. of Shellfish Safety  
Per Newport News Sewage Spill, 1/4/21

6  
Naseway Shoals

6  
Public Area 3A



### Legend

PFU of MSC/100g

◇ < 7

### Condemned Shellfish Waters

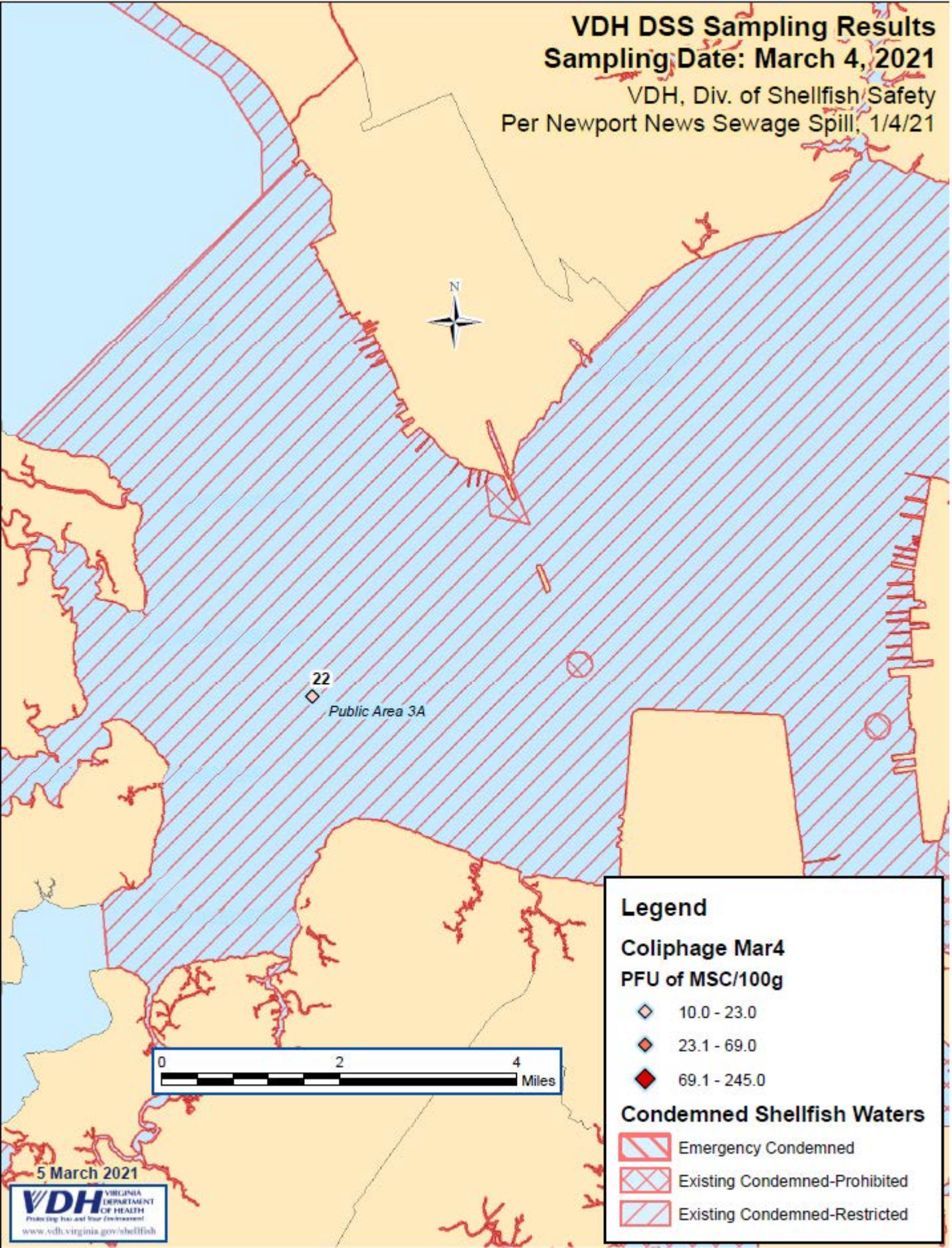
- Emergency Condemned
- Existing Condemned-Prohibited
- Existing Condemned-Restricted

28 April 2021

# VDH DSS Sampling Results

## Sampling Date: March 4, 2021

VDH, Div. of Shellfish Safety  
Per Newport News Sewage Spill, 1/4/21



### Legend

#### Coliphage Mar4 PFU of MSC/100g

- ◇ 10.0 - 23.0
- ◇ 23.1 - 69.0
- ◆ 69.1 - 245.0

#### Condemned Shellfish Waters

- Emergency Condemned
- Existing Condemned-Prohibited
- Existing Condemned-Restricted

5 March 2021



# VDH DSS Sampling Results

Sampling Date: March 1-2, 2021

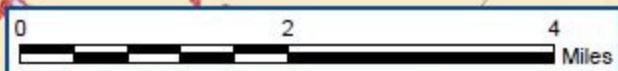
VDH, Div. of Shellfish Safety  
Per Newport News Sewage Spill, 1/4/21

10  
Naseway  
Shoals



157  
Salters Creek  
Boat Ramp

23  
Public Area 3A



## Legend

Coliphage Mar1-2  
PFU of MSC/100g

- ◊ 10.0 - 23.0
- ◈ 23.1 - 69.0
- ◆ 69.1 - 245.0

## Condemned Shellfish Waters

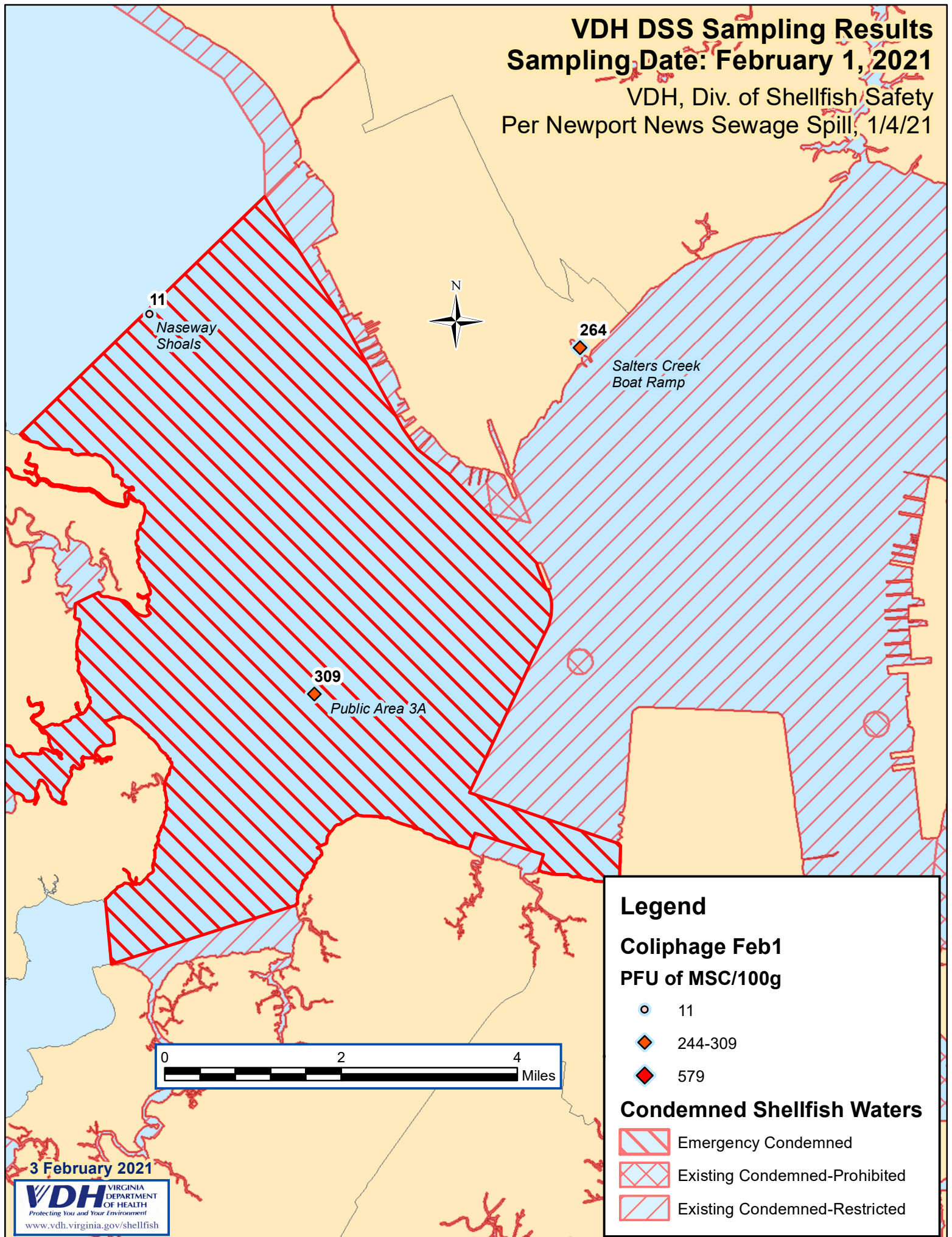
- Emergency Condemned
- Existing Condemned-Prohibited
- Existing Condemned-Restricted

4 March 2021

# VDH DSS Sampling Results

## Sampling Date: February 1, 2021

VDH, Div. of Shellfish Safety  
Per Newport News Sewage Spill, 1/4/21

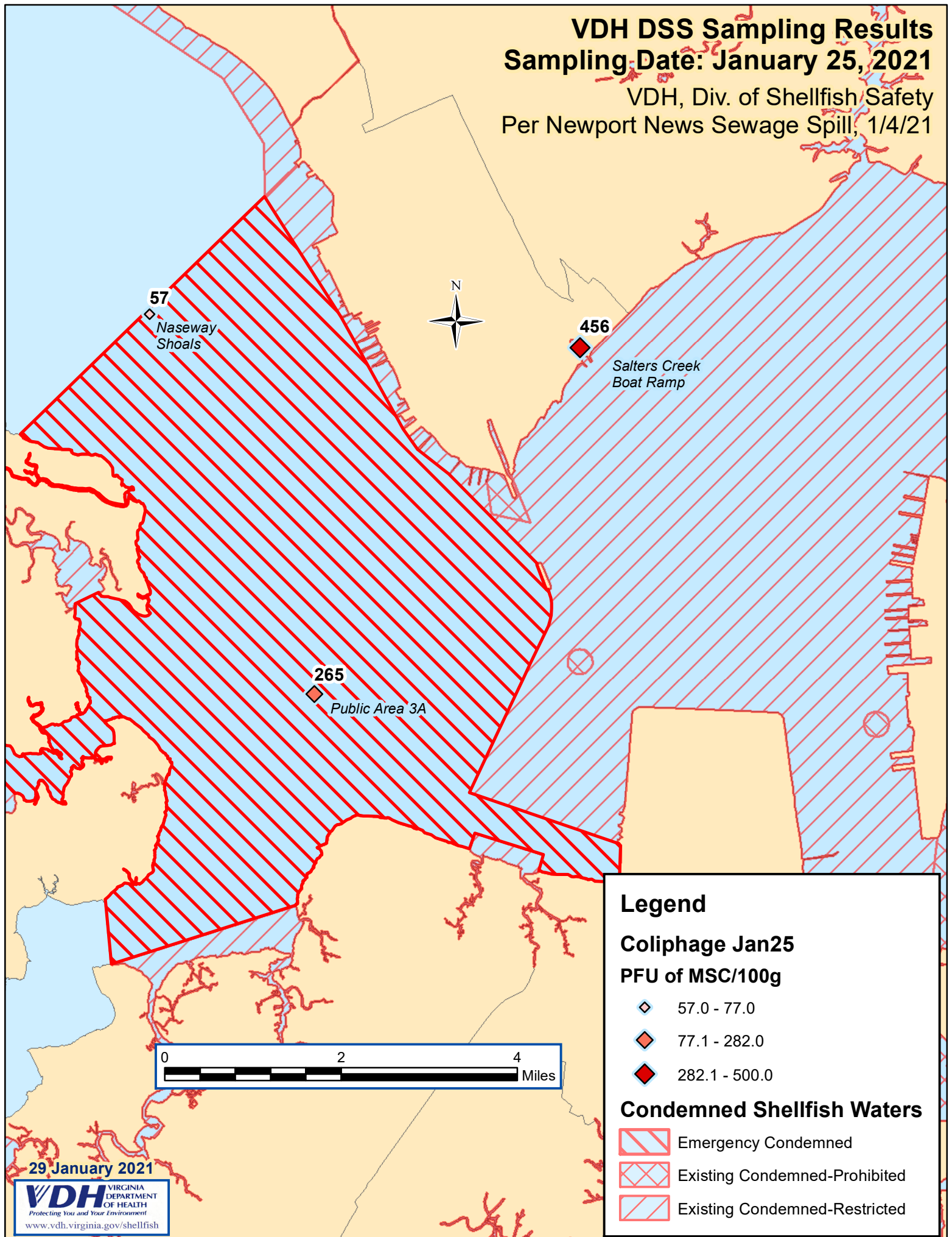




# VDH DSS Sampling Results

## Sampling Date: January 25, 2021

VDH, Div. of Shellfish Safety  
Per Newport News Sewage Spill, 1/4/21

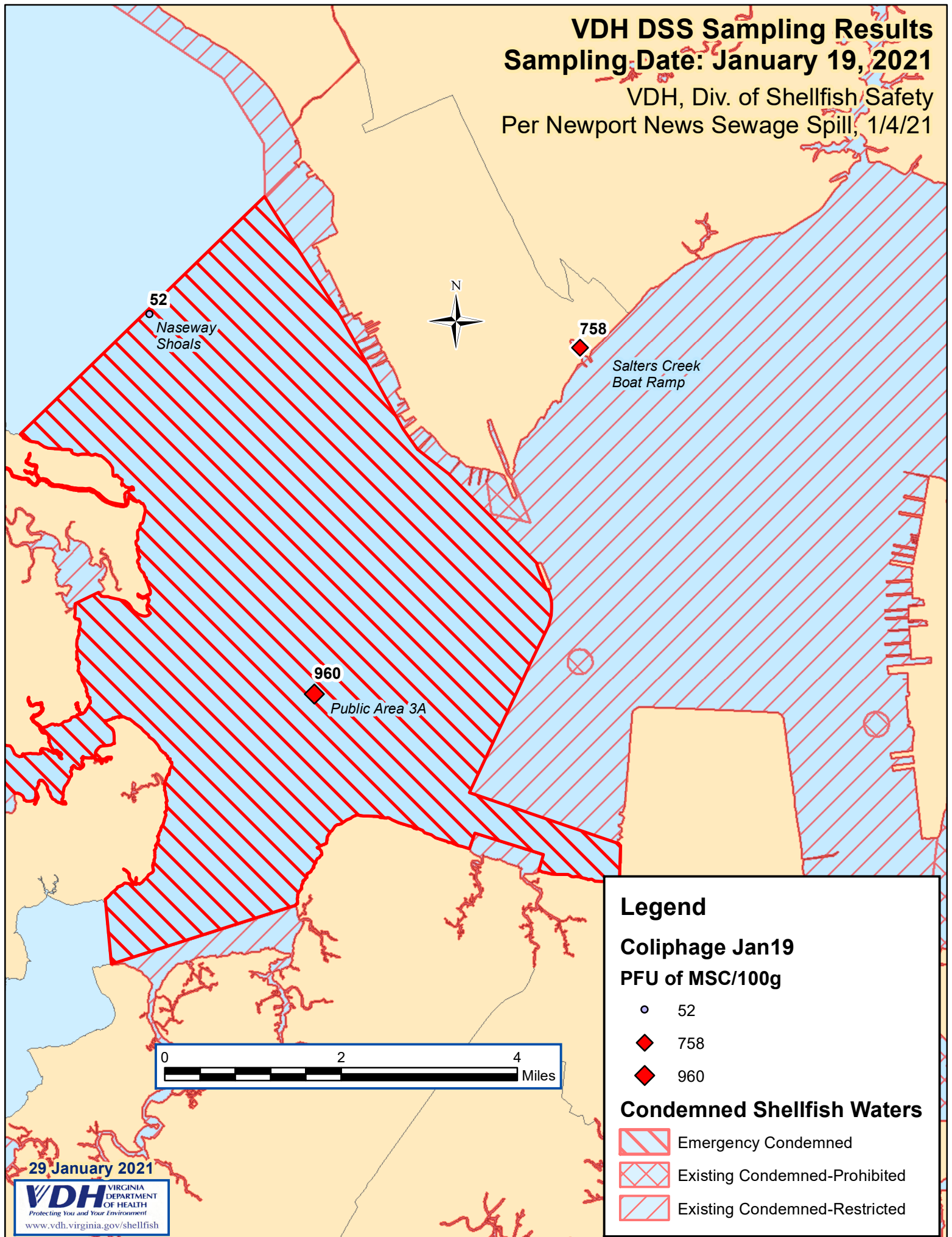


29 January 2021

# VDH DSS Sampling Results

## Sampling Date: January 19, 2021

VDH, Div. of Shellfish Safety  
Per Newport News Sewage Spill, 1/4/21

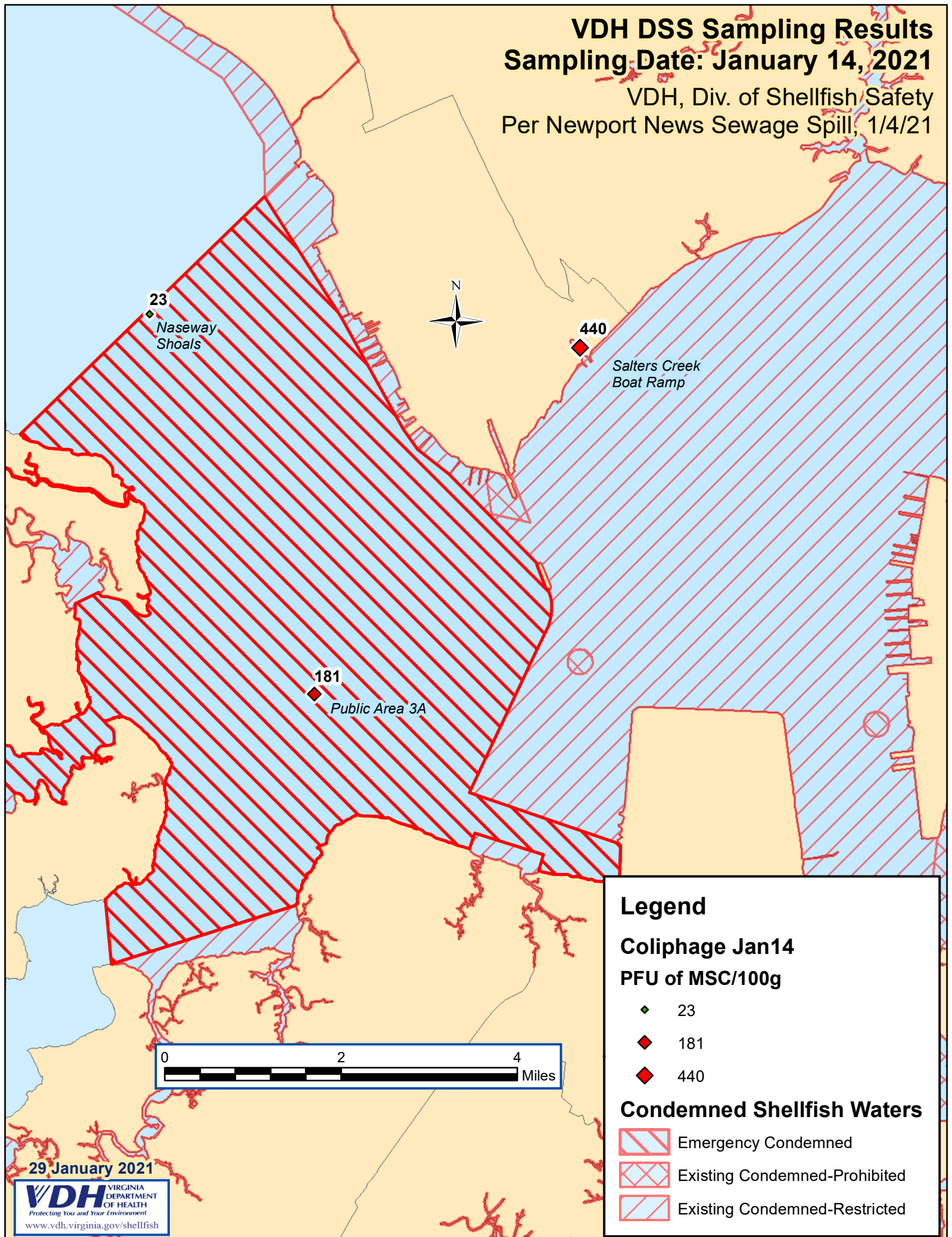


29 January 2021

# VDH DSS Sampling Results

## Sampling Date: January 14, 2021

VDH, Div. of Shellfish Safety  
Per Newport News Sewage Spill, 1/4/21



29 January 2021