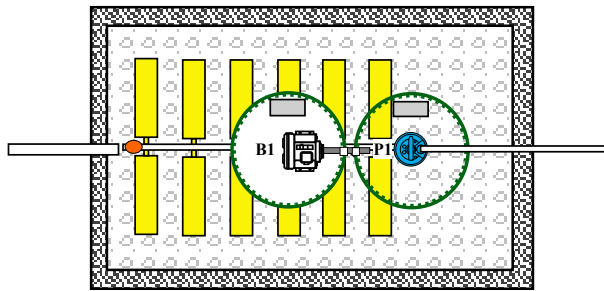
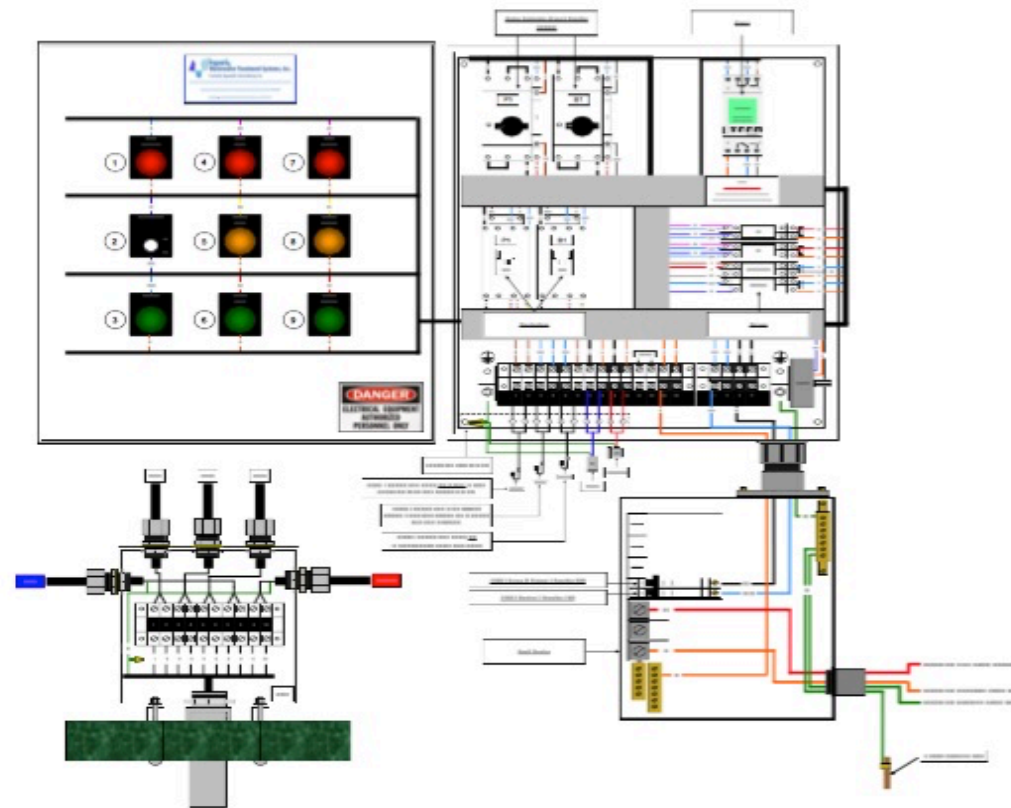


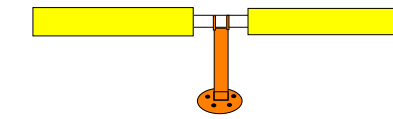
PLAN VIEW



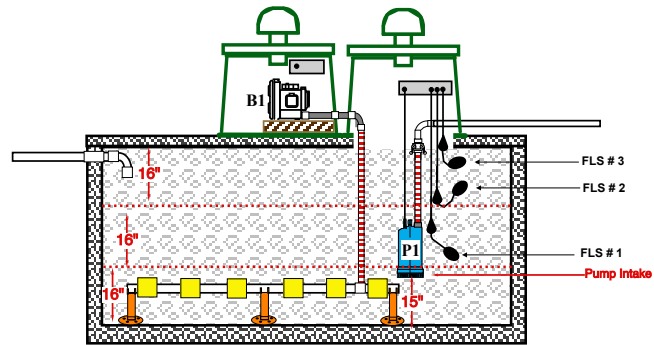
CONTROL VIEW



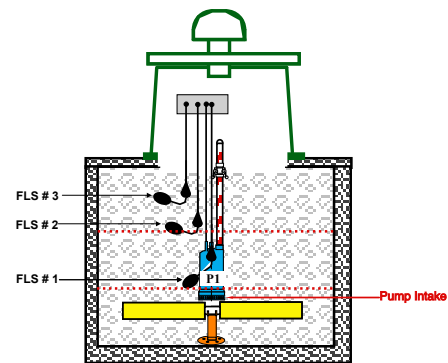
AIR DIFFUSER ASSEMBLY VIEW



SECTION VIEW



END VIEW



AQUAO2 TANK AND COMPONENT SPECIFICATIONS

GALLONS PER DAY	AQUAO2 MODEL	MINIMUM TANK SIZE	BLOWER SPECIFICATIONS	PUMP SPECIFICATIONS	
				DISPERSING TO LOWER ELEVATION OR SHORTER DISTANCE	DISPERSING TO HIGHER ELEVATION OR LONGER DISTANCE
300	54291-3	900 GALLONS	1/3 HP	1/3 HP	1/2 HP
500	54291-5	1,500 GALLONS	1/2 HP	1/2 HP	1/2 HP
600	54291-6	1,800 GALLONS	1/2 HP	1/2 HP	1/2 HP
700	54291-7	2,100 GALLONS	1 HP	1/2 HP	1/2 HP
750	54291-7.5	2,250 GALLONS	1 HP	1/2 HP	1/2 HP
800	54291-8	2,400 GALLONS	1 HP	1/2 HP	1/2 HP
900	54291-9	2,700 GALLONS	1 HP	1/2 HP	1/2 HP
1,000	54291-10	3,000 GALLONS	1 HP	1/2 HP	1/2 HP
1,100	54291-11	3,300 GALLONS	1 HP	1 HP	1 HP
1,200	54291-12	3,600 GALLONS	1 HP	1 HP	1 HP
1,300	54291-13	4,000 GALLONS	1 HP	1 HP	1 HP
1,400	54291-14	4,200 GALLONS	1 HP	1 HP	1 HP
1,500	54291-15	4,500 GALLONS	1 HP	1 HP	1 HP

**CONFIDENTIAL NOTICE**

THIS DOCUMENT CONTAINS INFORMATION THAT IS CONFIDENTIAL AND PROPRIETARY TO AQUAO2 WASTEWATER TREATMENT SYSTEMS INC., FORMERLY AQUAROBIC INTERNATIONAL, INC..

THE INFORMATION MAY NOT BE USED, DISCLOSED OR REPRODUCED WITHOUT THE PRIOR WRITTEN AUTHORIZATION OF AQUAO2, AND THOSE SO AUTHORIZED MAY ONLY USE THE INFORMATION FOR THE PURPOSE OF EVALUATION CONSISTENT WITH AUTHORIZATION.

REPRODUCTION OF ANY SECTION OF THIS DOCUMENT MUST INCLUDE THIS LEGEND.

**CLASS # 1 STANDARD 40**

REMOVAL EFFICIENCIES  
BASED ON AVG VALUES  
4/11/1993 - 10/28/1993

	INFLUENT AVERAGE	EFFLUENT AVERAGE	REDUX	PERCENT REDUCTION
BOD MG/L	170	7	163	95.8%
SS MG/L	200	11	189	94.5%

**MINI-PLANT MODELS**

54291-5 TO 54291-15

IN CONCRETE TANKS



5800 Prillaman Switch Rd PO Box 579 Ferrum, VA 24088  
(800) 927-8304 (540) 365-0154 / Fax: (540) 365-0155  
info@aqua-o2.com www.aqua-o2.com

SCALE - NTS

7/23/2015